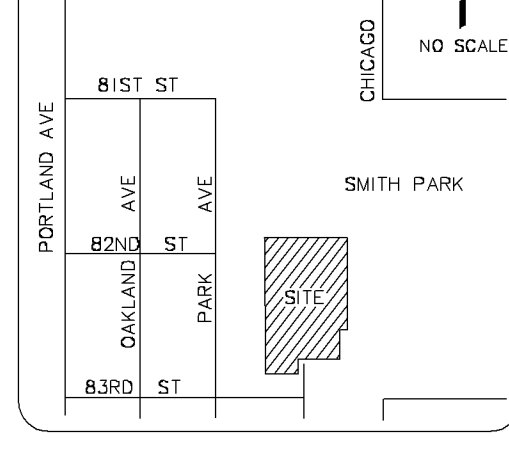


**SURVEY OF:
8201 PARK AVENUE S.
BLOOMINGTON, MN**
BENCHMARKS

- 1.) Top of top nut of fire hydrant at the southwest quadrant of Park Avenue and 83rd Street. Elevation = 821.70 feet
 - 2.) Top of top nut of fire hydrant on west side of Columbus Ave 74 +/- feet north of the north right of way of 83rd Street. Elevation = 819.87 feet
 - 3.) Top of top nut of fire hydrant west of tennis court and east of northeast building corner. Elevation = 821.12 feet
- NOTE: Elevations shown are based on City of Bloomington benchmarks.

VICINITY MAP



AMERICAN BLVD
CHICAGO AVE
SMITH PARK
PORTLAND AVE
82ND ST
81ST ST
80TH ST
79TH ST
78TH ST
77TH ST
76TH ST
75TH ST
74TH ST
73RD ST
72ND ST
71ST ST
70TH ST
69TH ST
68TH ST
67TH ST
66TH ST
65TH ST
64TH ST
63RD ST
62ND ST
61ST ST
60TH ST
59TH ST
58TH ST
57TH ST
56TH ST
55TH ST
54TH ST
53RD ST
52ND ST
51ST ST
50TH ST
49TH ST
48TH ST
47TH ST
46TH ST
45TH ST
44TH ST
43RD ST
42ND ST
41ST ST
40TH ST
39TH ST
38TH ST
37TH ST
36TH ST
35TH ST
34TH ST
33RD ST
32ND ST
31ST ST
30TH ST
29TH ST
28TH ST
27TH ST
26TH ST
25TH ST
24TH ST
23RD ST
22ND ST
21ST ST
20TH ST
19TH ST
18TH ST
17TH ST
16TH ST
15TH ST
14TH ST
13TH ST
12TH ST
11TH ST
10TH ST
9TH ST
8TH ST
7TH ST
6TH ST
5TH ST
4TH ST
3RD ST
2ND ST
1ST ST

NO SCALE

SCALE IN FEET

30 0 30 60

SCALE IN FEET

LEGEND

- Denotes iron monument set marked with P.L.S. No. 15480 unless otherwise noted
- Denotes found iron monument
- BBH Denotes basketball hoop
- CB Denotes catch basin
- CBX Denotes catch basin
- CIP Denotes cast iron pipe
- COL Denotes building column
- DIP Denotes ductile iron pipe
- FH Denotes fire hookup
- FOL Denotes fiber optic line
- FP Denotes flag post
- GC Denotes concrete gutter
- GP Denotes goal post
- CP Denotes curb post
- CW Denotes curb wall
- HCR Denotes handicap ramp
- HCS Denotes handicap sign
- HH Denotes hand hole
- HYD Denotes fire hydrant
- INV Denotes structure invert
- LA Denotes landscaped area
- OD Denotes overhead door
- LP Denotes light pole
- OHC Denotes overhead communication line
- OPE Denotes overhead electric line
- OP Denotes overhead pipe
- PVC Denotes polyvinylchloride pipe
- RCP Denotes reinforced concrete pipe
- RD Denotes road drain
- SAN Denotes sanitary manhole
- SAN S Denotes sanitary sewer
- SMH Denotes storm manhole
- ST Denotes storm sewer
- SWB Denotes stone wall bottom
- TC Denotes top of concrete curb
- TRANS Denotes transformer
- UGC Denotes underground communication line
- UGE Denotes underground electric line
- VCP Denotes vitrified clay pipe
- VP Denotes vent pipe
- W Denotes water line
- WV Denotes water valve
- BAS Denotes Basswood tree
- HACK Denotes Hackberry tree
- LOC Denotes Locust tree
- MPL Denotes Maple tree
- SHB Denotes shrub

CHICAGO LOT 36 PARKING SPACES

FUTURE 6' SIDEWALK

PROOF OF PARKING 48 PARKING SPACES INCLUDING 2 ACCESSIBLE SPACES

VERIFY CONNECTION TO THE CHICAGO LOT.

STOP SIGN

NEW PARKING AREAS BITUMINOUS SURFACE CONCRETE CURB

PARKING SUMMARY

PARKING AS SHOWN	230 PARKING SPOTS
NEW PARKING IF REQUIRED	46 PARKING SPOTS
CHICAGO LOT	36 PARKING SPOTS
TOTAL	312 PARKING SPOTS

PROOF OF PARKING

PROOF OF PARKING SOUTH END OF SOCCER FIELD	48 PARKING SPOTS
TOTAL WITH PROOF OF PARKING	360 PARKING SPOTS

DIRECTION OF TRAFFIC

15' X 15' CLEAR VIEW TRIANGLE

Issues & Revisions:

7-19-18	PARKING AND DRIVES
7-26-18	REMOVE ENTRY @ SMITH PARK NORTH ENTRY/EXIT TWO WAY
7-27-18	REVISED LANDSCAPING

LANDSCAPING EXISTING TO BE APPROVED BY CITY PLANNERS AND/OR CITY FORESTER

ASH EXISTING

EVERGREEN

DECIDUOUS

VERIFY WITH POWER COMPANY THE TYPE AND SIZE ALLOWED UNDER THE POWER LINES. GREATER THAN 6 FEET IN HEIGHT. MIN. NEW 6

VERIFY WITH POWER COMPANY THE TYPE AND SIZE ALLOWED UNDER THE POWER LINES. GREATER THAN 4 CALIPER INCHES. MIN. NEW 2

SHRUBS ON A MULCH BASE SPACED TO ENSURE CLOSURE WITH HEIGHT BETWEEN 36" MIN. AND 48" MAX. MINIMUM 24" TALL AT PLANTING. MIN. NEW 32

SHEET SCHEDULE

A1.1	EXISTING UTILITIES
A1.2	SMITH PARK PARKING LOT
A1.3	PROOF OF PARKING SOUTH END OF SOCCER FIELD
A1.4	EXISTING WEST PARKING LOT
A1.5	EXISTING WEST PARKING LOT IN USE UNDER UNDERGROUND
A1.6	NEW SOCCER PARKING LOT OFF EAST ST
A1.7	BUILDING PLAN WITH UTILITY ROOM INFORMATION FOR SPOON YEAR 2017 2018
A1.8	BUILDING PLAN WITH UTILITY ROOM INFORMATION FOR SPOON YEAR 2017 2018

ARCHITECTS

1959 Sixon Place, Suite 100
Hawthorn, MN 55117
Phone: (651) 487-3238
Fax: (651) 487-3283
www.NA-Architects.com

**SUCCESS ACADEMY
Dar Al Farooq Center**

8201 Park Ave South
Bloomington, Mn. 55420

A1.1 SURVEY & SITE PLAN

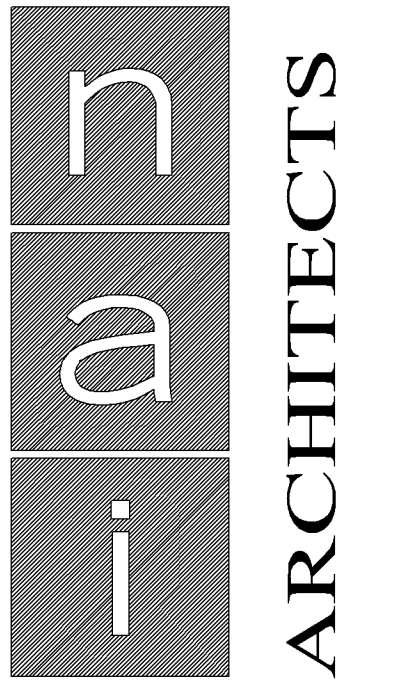
Sheet No.:
Drawn By: **J.K.G.**
Date: **06/20/2018**



NORTH

SHEET SCHEDULE

A1.1	SITE PLAN WITH PARKING
A1.2	SMITH PARK PARKING LOT
A1.3	NEW PARKING LOT IN FRONT OF GYM.
A1.4.1	EXISTING WEST PARKING LOT
A1.4.2	EXISTING WEST PARKING LOT W/ BUS LOADING/ UNLOADING
A1.5	NEW SOUTH PARKING LOT OFF 83rd ST.
A1.6	BUILDING PLAN WITH CLASS ROOM INFORMATION FOR SCHOOL YEAR 2017 - 2018.
A1.7	BUILDING PLAN WITH CLASS ROOM INFORMATION FOR SCHOOL YEAR 2018 - 2019.



1959 Sloan Place, Suite 100
 Maplewood, MN 55117
 Phone: (651) 487-3281
 Fax: (651) 487-3283
 www.NAI-Architects.com

I hereby certify that this plan, specification, or report was prepared by me or under my direct supervision and that I am a duly Licensed Architect under the laws of the state of Minnesota.
 Signature: *John K. Gaspar*
 Typed Name: JOHN K. GASPAP
 Date 06-20-2018 Reg. No. 16430

**SUCCESS ACADEMY
 Dar Al Farooq Center**

8201 Park Ave South
 Bloomington, Mn. 55420

Issues & Revisions:	
7-19-18	PARKING AND DRIVES
7-26-18	NORTH ENTRY/EXIT TWO WAY
7-27-18	REVISED LANDSCAPING

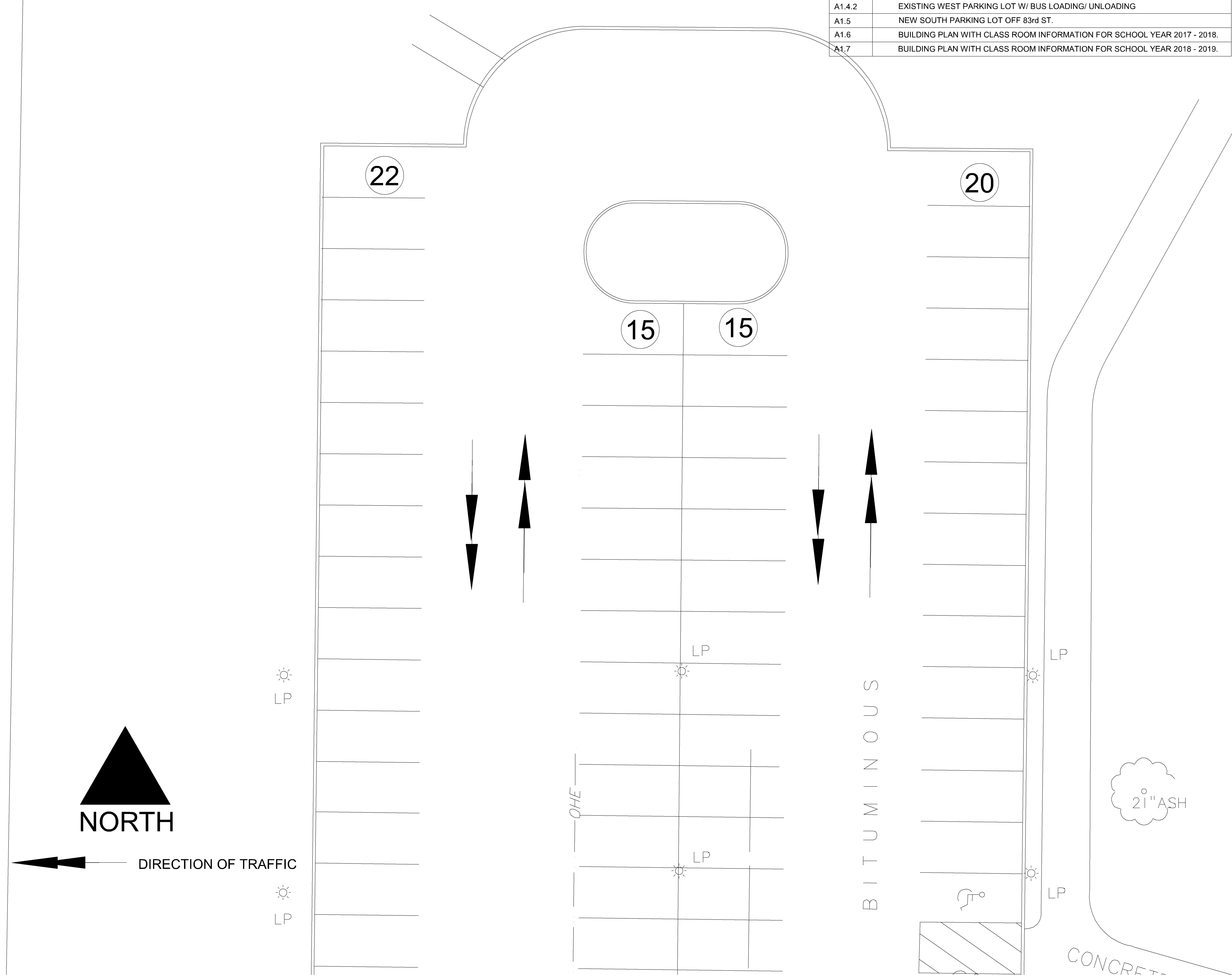
Comm. No.: **2017041**
 Drawn By: **J.K.G.**
 Date: **06/20/2018**

Sheet Name:
**NEW ENTRY/EXIT
 TO SMITH PARK**

BUILDING PLAN

Sheet No.:

A1.2



DIRECTION OF TRAFFIC

LP

LP

OHE

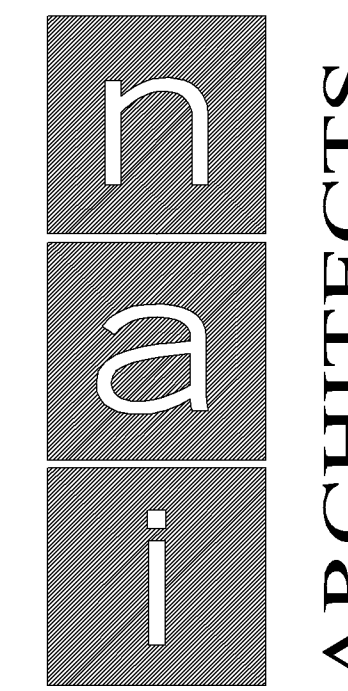
BITUMINOUS

LP

LP

21" ASH

CONCRETE



1959 Sloan Place, Suite 100
Maplewood, MN 55117

Phone: (651) 487-3281
Fax: (651) 487-3283
www.NAI-Architects.com

I hereby certify that this plan, specification, or report was prepared by me or under my direct supervision and that I am a duly Licensed Architect under the laws of the state of Minnesota.
Signature: *John K. Gaspar*
Typed Name: JOHN K. GASPAR
Date: 06-20-2018 Reg. No. 16430

SUCCESS ACADEMY Dar Al Farooq Center

8201 Park Ave South
Bloomington, Mn. 55420

15' X 15' CLEAR VIEW TRIANGLE

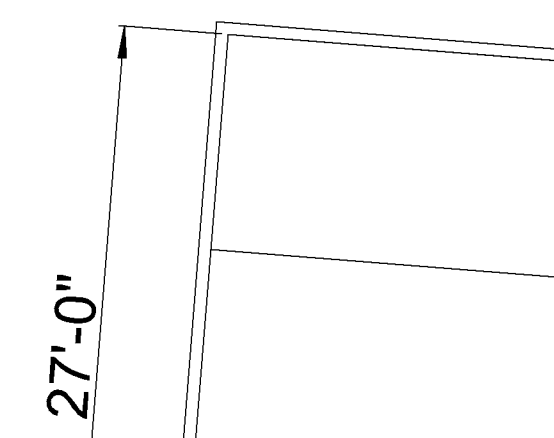
Issues & Revisions:	
7-19-18	PARKING AND DRIVES
7-26-18	NORTH ENTRY/EXIT TWO WAY
7-27-18	REVISED LANDSCAPING

Comm. No.: **2017041**
Drawn By: **J.K.G.**
Date: **06/20/2018**

Sheet Name:
**NEW PARKING AT
COMMUNITY CENTER**

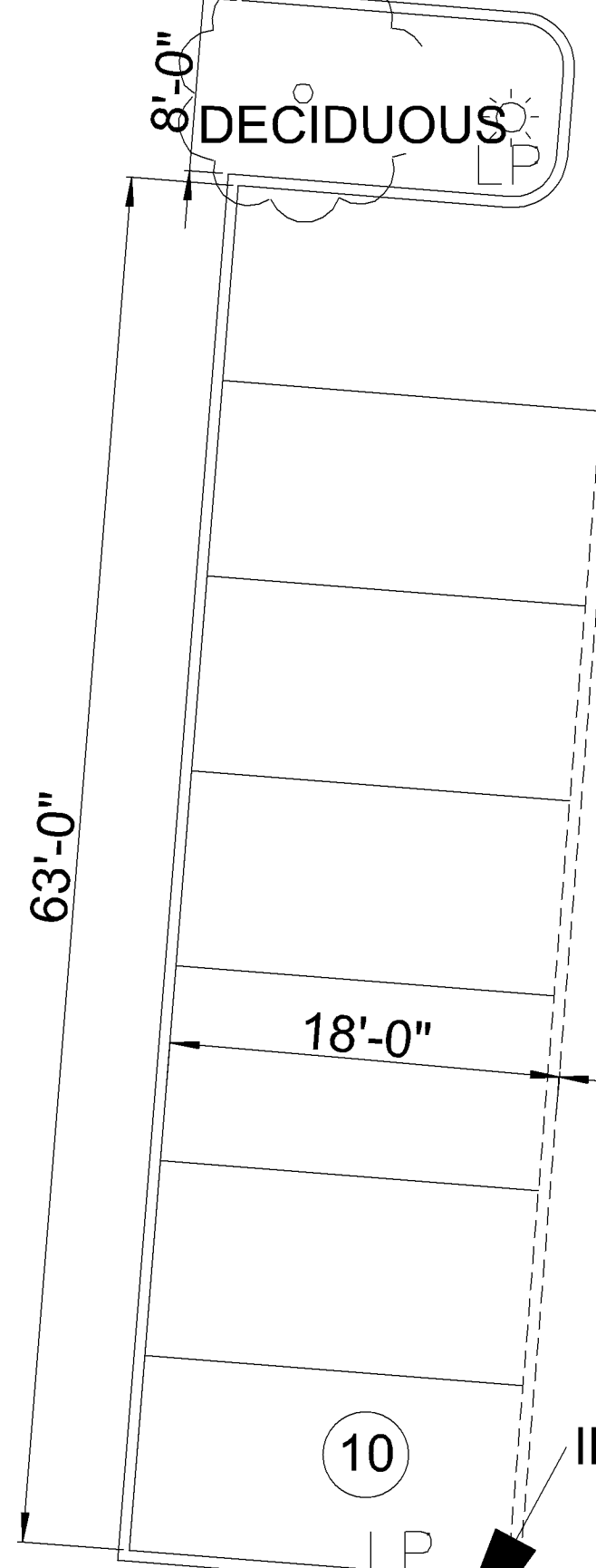
Sheet No.:
A1.3

CONCRETE



STANDARD PARKING SPACE
9' X 18'

NEW PARKING AREA IF REQUIRED
19 NEW PARKING SPACES



INSTALL STOP SIGN

CONCRETE

COL

COL

6

STANDARD PARKING SPACE
9' X 18'
REVISE ANGLE PARKING TO 90° PARKING

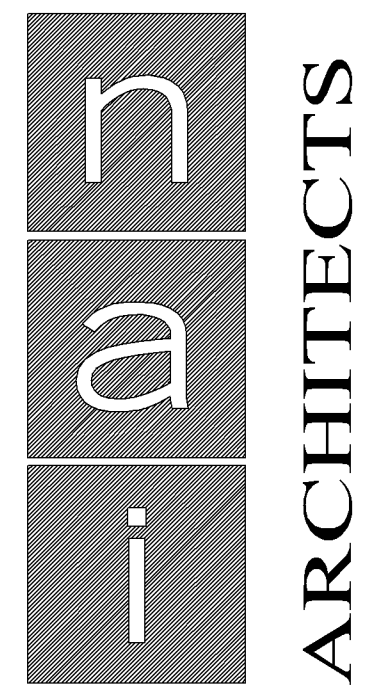
DO NOT ENTER SIGNS

INSTALL STOP SIGN

DIRECTION OF TRAFFIC
INSTALL STOP SIGN



33



1959 Sloan Place, Suite 100
Maplewood, MN 55117
Phone: (651) 487-3281
Fax: (651) 487-3283
www.NAI-Architects.com

I hereby certify that this plan, specification, or report was prepared by me or under my direct supervision and that I am a duly Licensed Architect under the laws of the state of Minnesota.
Signature: *John K. Gaspar*
Typed Name: JOHN K. GASPAR
Date: 06/20/2018 Reg. No. 16430

**SUCCESS ACADEMY
Dar Al Farooq Center**

8201 Park Ave South
Bloomington, Mn. 55420

Issues & Revisions:

7-19-18	PARKING & DRIVES
7-26-18	NORTH ENTRY/EXIT TWO WAY
7-27-18	REVISED LANDSCAPING

Comm. No.: **2017041**
Drawn By: **J.K.G.**
Date: **06/20/2018**

**SCHOOL BUS
PARKING IN FRONT
SCHOOL**

Sheet No.:
A1.4.1
NORTH

SHEET SCHEDULE

A1.1	SITE PLAN WITH PARKING
A1.2	SMITH PARK PARKING LOT
A1.3	NEW PARKING LOT IN FRONT OF GYM.
A1.4.1	EXISTING WEST PARKING LOT
A1.4.2	EXISTING WEST PARKING LOT W/ BUS LOADING/ UNLOADING
A1.5	NEW SOUTH PARKING LOT OFF 83rd ST.
A1.6	BUILDING PLAN WITH CLASS ROOM INFORMATION FOR SCHOOL YEAR 2017 - 2018.
A1.7	BUILDING PLAN WITH CLASS ROOM INFORMATION FOR SCHOOL YEAR 2018 - 2019.

PROPERTY LINE

INSTALL STOP SIGN

INSTALL STOP SIGN

NO PARKING SIGNAGE

INSTALL STOP SIGN

RESTRIPE PARKING AS SHOWN

DO NOT ENTER SIGN

INSTALL STOP SIGN

GRASS

BITUMINOUS

GRASS

BITUMINOUS

CONCRETE

SUCCESS ACADEMY

DAR AL FAROOQ

BUS PARKING LOCATIONS WILL BE MARKED BY CONES. NO PARKING OR DRIVING WILL BE ALLOWED EXCEPT BY PARENTS AND BUSES.

THIS AREA IS TO BE ONEWAY ONLY ALL DAY. DURING DROP-OFF & PICK-UP TIMES ONLY BUSES AND PARENTS DROPPING OFF OR PICKING UP STUDENTS WILL BE ALLOWED.

INSTALL STOP SIGN

NO PARKING SIGNAGE

NO PARKING SIGNAGE

INSTALL ONE WAY SIGN

GRASS

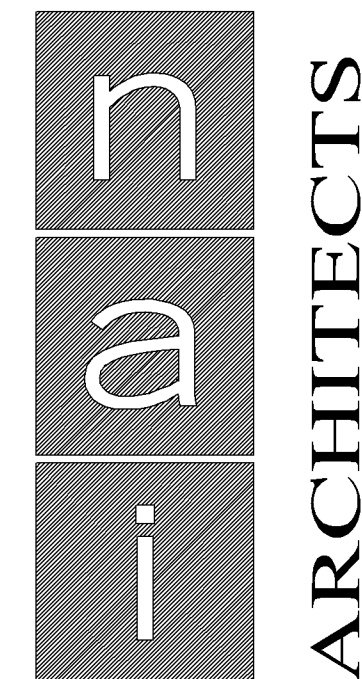
GARDEN

KEYSTONE WALL WITH TANK

SHEET SCHEDULE

A1.1	SITE PLAN WITH PARKING
A1.2	SMITH PARK PARKING LOT
A1.3	NEW PARKING LOT IN FRONT OF GYM.
A1.4.1	EXISTING WEST PARKING LOT
A1.4.2	EXISTING WEST PARKING LOT W/ BUS LOADING/ UNLOADING
A1.5	NEW SOUTH PARKING LOT OFF 83rd ST.
A1.6	BUILDING PLAN WITH CLASS ROOM INFORMATION FOR SCHOOL YEAR 2017 - 2018.
A1.7	BUILDING PLAN WITH CLASS ROOM INFORMATION FOR SCHOOL YEAR 2018 - 2019.

15' X 15' CLEAR VIEW TRIANGLE
DIRECTION OF TRAFFIC



1959 Sloan Place, Suite 100
Maplewood, MN 55117
Phone: (651) 487-3281
Fax: (651) 487-3283
www.NAI-Architects.com

I hereby certify that this plan, specification, or report was prepared by me or under my direct supervision and that I am a duly Licensed Architect under the laws of the state of Minnesota.
Signature: *John K. Gaspar*
Typed Name: JOHN K. GASPAR
Date: 06-20-2018 Reg. No. 16430

SUCCESS ACADEMY
Dar Al Farooq Center

8201 Park Ave South
Bloomington, Mn. 55420

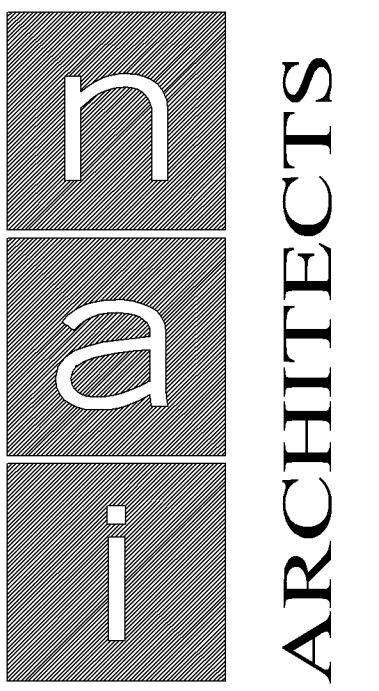
Issues & Revisions:	
7-19-18	PARKING & DRIVES
7-26-18	NORTH ENTRY/EXIT TWO WAY
7-27-18	REVISED LANDSCAPING

Comm. No.: 2017041
Drawn By: J.K.G.
Date: 06/20/2018

PARKING IN FRONT
SCHOOL DURING
NON BUS TIMES.

Sheet No.:
A1.4.2

NORTH



1959 Sloan Place, Suite 100
Maplewood, MN 55117
Phone: (651) 487-3281
Fax: (651) 487-3283
www.NAI-Architects.com

I hereby certify that this plan, specification, or report was prepared by me or under my direct supervision and that I am a duly Licensed Architect under the laws of the state of Minnesota.
Signature: *John K. Gaspar*
Typed Name: JOHN K. GASPAR
Date: 06-20-2018 Reg. No. 16430

**SUCCESS ACADEMY
Dar Al Farooq Center**

8201 Park Ave South
Bloomington, Mn. 55420

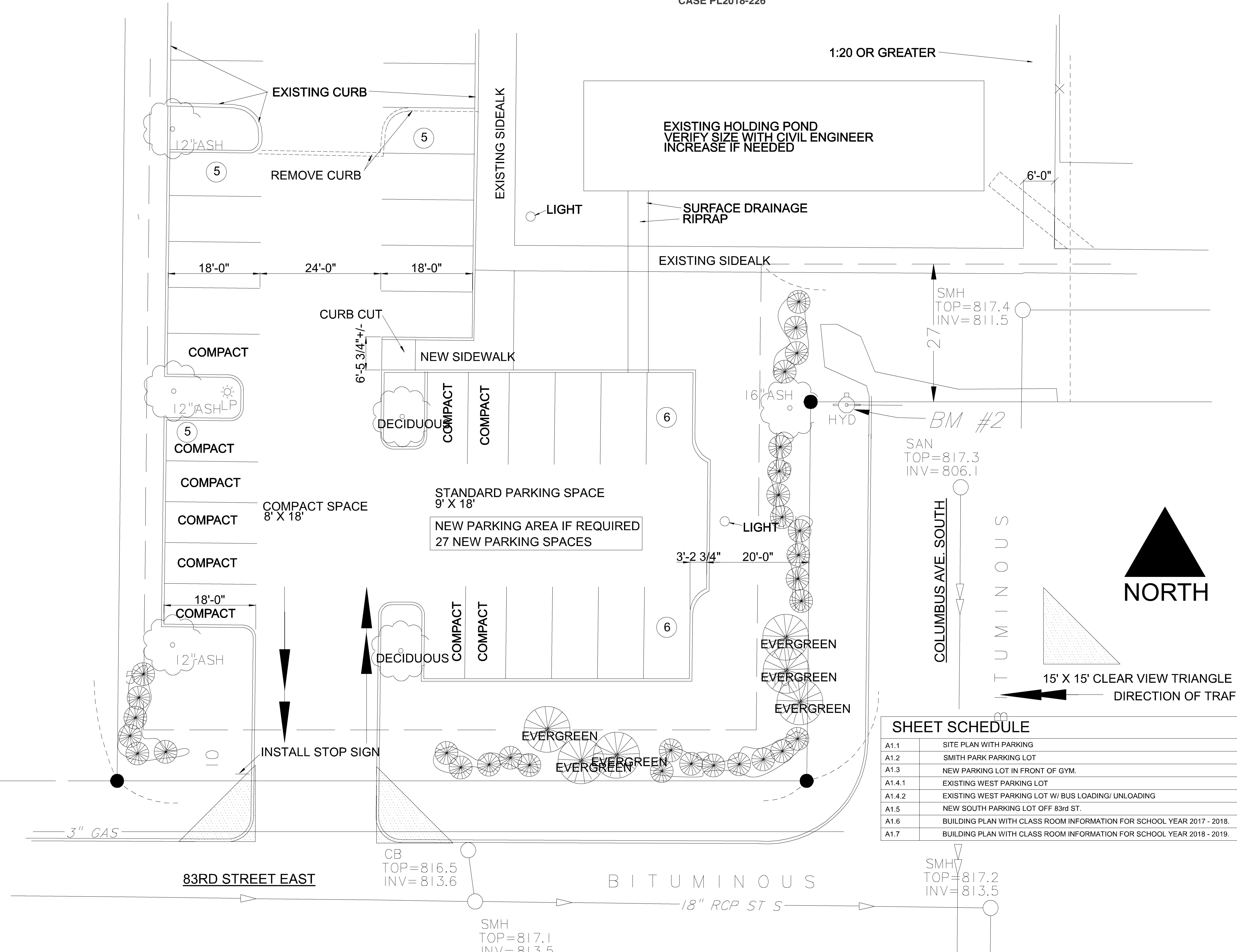
Issues & Revisions:

7-19-18	PARKING AND DRIVES
7-27-18	REVISED LANDSCAPING

Comm. No.: **2017041**
Drawn By: **J.K.G.**
Date: **06/20/2018**

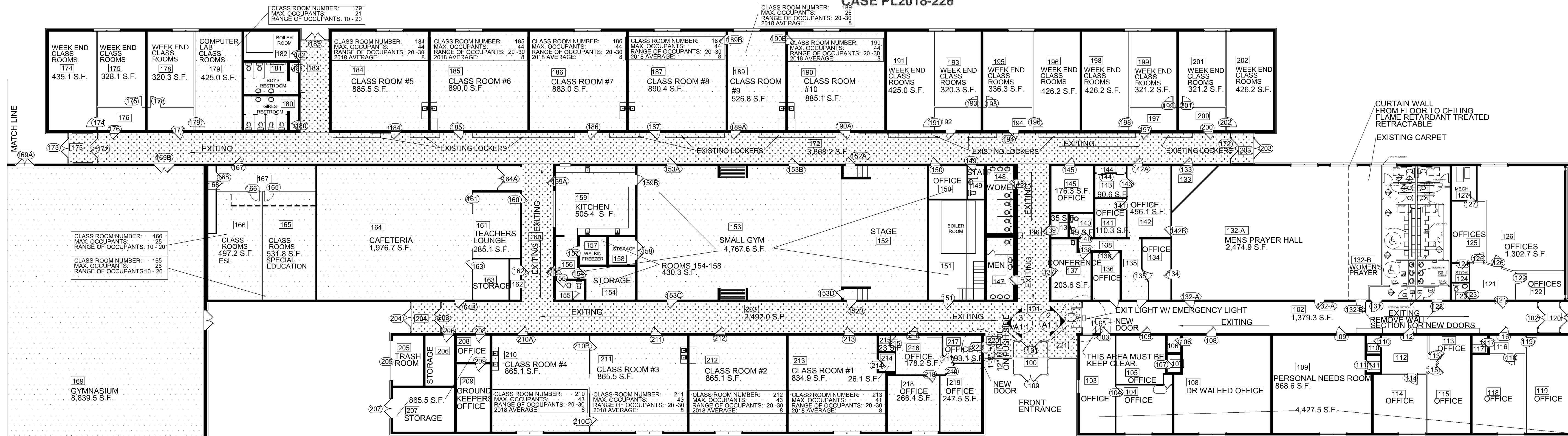
Sheet Name:
**NEW SOUTH
PARKING LOT**

Sheet No.:
A1.5



SHEET SCHEDULE

A1.1	SITE PLAN WITH PARKING
A1.2	SMITH PARK PARKING LOT
A1.3	NEW PARKING LOT IN FRONT OF GYM.
A1.4.1	EXISTING WEST PARKING LOT
A1.4.2	EXISTING WEST PARKING LOT W/ BUS LOADING/ UNLOADING
A1.5	NEW SOUTH PARKING LOT OFF 83rd ST.
A1.6	BUILDING PLAN WITH CLASS ROOM INFORMATION FOR SCHOOL YEAR 2017 - 2018.
A1.7	BUILDING PLAN WITH CLASS ROOM INFORMATION FOR SCHOOL YEAR 2018 - 2019.



1 BUILDING PLAN
A1.2 SCALE: 1/16"=1'-0"

SCHOOL OCCUPANCY PLAN 2017-2018

CLASS ROOM OCCUPANCY
1 OCCUPANT PER 20 SQ. FT.
THIS INCLUDES STUDENTS AND TEACHERS.

OFFICE OCCUPANCY
1 PER 100 SQ. FT.
THIS INCLUDES STUDENTS AND TEACHERS.

84 TOTAL STUDENTS TO BE ENROLLED.
EACH CLASS ROOM IS SHOWN AS MAXIMUM OCCUPANTS ALLOWED.
EACH CLASS ROOM IS SHOWN AS A RANGE OF OCCUPANTS FOR SCHOOL YEAR 2018.

CLASS ROOMS SHOWN AS:	CLASS ROOM NUMBER: MAX. OCCUPANTS: RANGE OF OCCUPANTS: 2018 AVERAGE:
-----------------------	---

OCCUPANT LOAD:	
STUDENTS:	84
TEACHERS & STAFF:	15
	99

PLUMBING FIXTURES REQUIRED: 1 FIXTURE PER 50 OCCUPANTS
2 PLUMBING FIXTURES ARE REQUIRED.

EXISTING PLUMBING FIXTURES:

MALE STUDENTS	3 WATER CLOSETS	3 URINALS
FEMALE STUDENTS	9 WATER CLOSETS	
STAFF	3 WATER CLOSETS	

PARKING:
PARKING WITH & WITH OUT BUS LOADING AREA.
149 PARKING SPACES WITH 3 BUS SPACES THIS INCLUDES 8 ACCESSIBLE PARKING SPACES.
157 EXISTING PARKING SPACES WITH OUT BUS PARKING THIS INCLUDES 6 ACCESSIBLE PARKING SPACES.
72 EXISTING PARKING SPACES AT SMITH PARK INCLUDING 2 ACCESSIBLE PARKING SPACES.
36 EXISTING PARKING SPACES AT CHICAGO LOT INCLUDING 1 ACCESSIBLE PARKING SPACE.
265 TOTAL EXISTING PARKING SPACES WITH OUT BUS PARKING.

PROPOSED ADDITIONAL PARKING IF REQUIRED:
19 SPACES IN FRONT OF THE GYM.
27 AT THE CORNER OF 83rd STREET EAST AND COLUMBUS AVE.
1 AT EXISTING SOUTH EAST PARKING PER REVISING ACCESSIBLE PARKING.
312 TOTAL PARKING SPACES EXISTING, NEW AND REVISED THIS INCLUDES 15 ACCESSIBLE PARKING SPACES.

PROPOSED FUTURE PROOF OF PARKING:
SOUTH EAST PLAYING FIELD.
48 PARKING SPACES INCLUDING 2 ACCESSIBLE

SCHOOL HOURS:
MONDAY THROUGH THURSDAY: 7:30 UNTIL 3:00
FRIDAY: 7:30 UNTIL 11:30
GYM TO BE USED ONLY BY STUDENTS DURING SCHOOL HOURS.

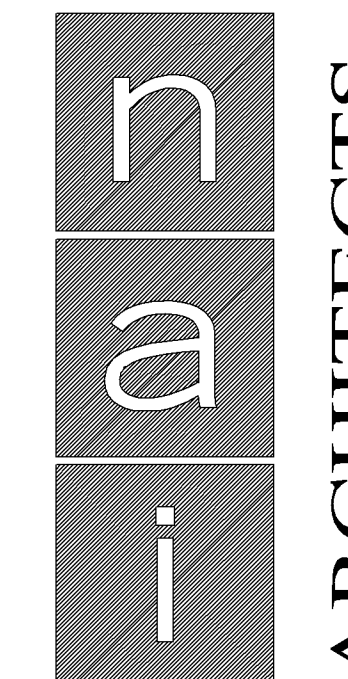
GENERAL INFORMATION

CODES USED: 2015 MINNESOTA STATE BUILDING CODE W/ ANSI A117.1-2009 ACCESSIBILITY RULES.
2012 INTERNATIONAL BUILDING CODE
2010 STANDARDS FOR ACCESSIBLE DESIGN
2015 MECHANICAL AND FUEL GAS CODE
2017 NEC
2015 MINNESOTA STATE PLUMBING CODE

EXISTING BUILDING: DAR AL FAROOQ CENTER
WAS SCHOOL BUILDING
FOOT PRINT: 61,130 SQ. FT.
BUILDING USES: MOSQUE (A-3) & SCHOOL (E)
BUILDING CONSTRUCTION ASSUMED TO BE: III-B
NON COMBUSTIBLE CONSTRUCTION
HAS A AUTOMATIC SPRINKLER SYSTEM AND WILL BE REWORKED AS NEEDED.
SURROUNDED AND ADJOINED BY PUBLIC WAYS OR YARDS OF NOT LESS THAN 60 FEET.

SHEET SCHEDULE

A1.1	SITE PLAN WITH PARKING
A1.2	SMITH PARK PARKING LOT
A1.3	NEW PARKING LOT IN FRONT OF GYM.
A1.4.1	EXISTING WEST PARKING LOT
A1.4.2	EXISTING WEST PARKING LOT W/ BUS LOADING/ UNLOADING
A1.5	NEW SOUTH PARKING LOT OFF 83rd ST.
A1.6	BUILDING PLAN WITH CLASS ROOM INFORMATION FOR SCHOOL YEAR 2017 - 2018.
A1.7	BUILDING PLAN WITH CLASS ROOM INFORMATION FOR SCHOOL YEAR 2018 - 2019.



ARCHITECTS

1959 Sloan Place, Suite 100
Maplewood, MN 55117
Phone: (651) 487-3281
Fax: (651) 487-3283
www.NAI-Architects.com

I hereby certify that this plan, specification, or report was prepared by me or under my direct supervision and that I am a duly Licensed Architect under the laws of the state of Minnesota.
Signature: *John K. Gaspar*
Typed Name: JOHN K. GASPAR
Date: 06-20-2018 Reg. No. 16430

SUCCESS ACADEMY Dar Al Farooq Center

8201 Park Ave South
Bloomington, Mn. 55420

Issues & Revisions:	
7-19-18	ENROLLMENT
7-26-18	ENROLLMENT

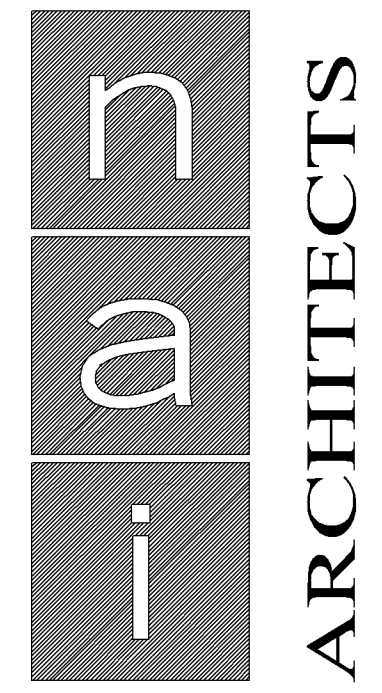
Comm. No.: **2017041**
Drawn By: **J.K.G.**
Date: **06/20/2018**

SCHOOL OCCUPANCY PLAN 2017- 2018

BUILDING PLAN

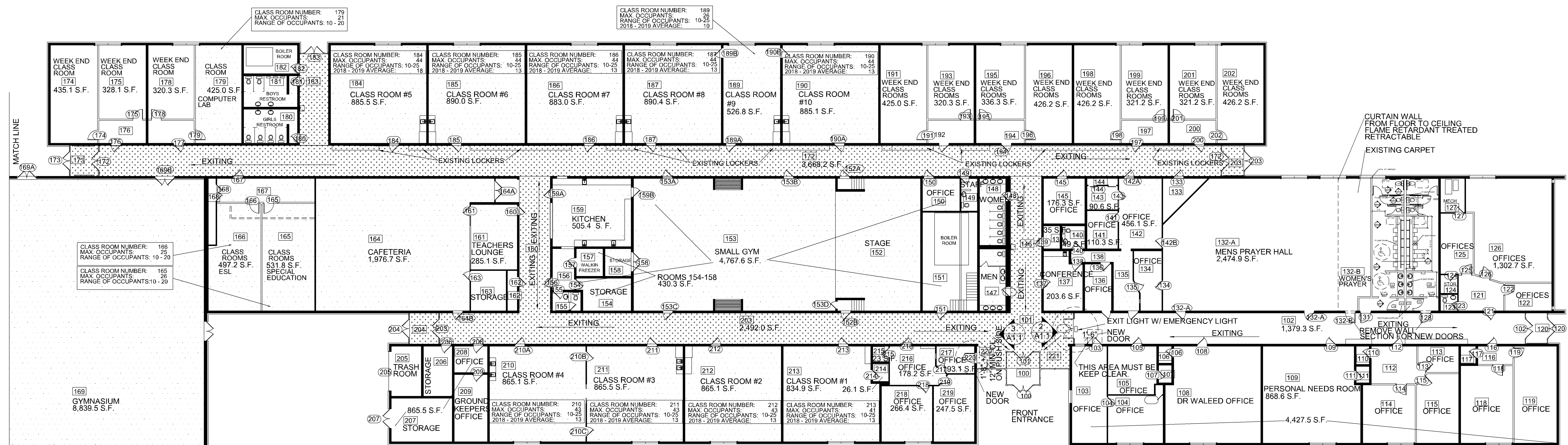
Sheet No.:

A1.6



1959 Sloan Place, Suite 100
Maplewood, MN 55117
Phone: (651) 487-3281
Fax: (651) 487-3283
www.NAI-Architects.com

I hereby certify that this plan, specification, or report was prepared by me or under my direct supervision and that I am a duly Licensed Architect under the laws of the state of Minnesota.
Signature: *John K. Gaspar*
Typed Name: JOHN K. GASPAR
Date: 06-20-2018 Reg. No. 16430



1 BUILDING PLAN
A1.2
SCALE: 1/16"=1'-0"

SCHOOL OCCUPANCY PLAN 2018 - 2019

CLASS ROOM OCCUPANCY:
1 OCCUPANT PER 20 SQ. FT.
THIS INCLUDES STUDENTS AND TEACHERS.

OFFICE OCCUPANCY:
1 PER 100 SQ. FT.
THIS INCLUDES STUDENTS AND TEACHERS.

130 TOTAL STUDENTS TO BE ENROLLED.
EACH CLASS ROOM IS SHOWN AS MAXIMUM OCCUPANTS ALLOWED.
EACH CLASS ROOM IS SHOWN AS A RANGE OF OCCUPANTS FOR SCHOOL YEAR 2018.

CLASS ROOMS SHOWN AS:	CLASS ROOM NUMBER:
	MAX. OCCUPANTS:
	RANGE OF OCCUPANTS:
	2018 - 2019 AVERAGE:

OCCUPANT LOAD:	STUDENTS:	130
	TEACHERS & STAFF:	20
		150

PLUMBING FIXTURES REQUIRED: 1 FIXTURE PER 50 OCCUPANTS
3 PLUMBING FIXTURES ARE REQUIRED.

EXISTING PLUMBING FIXTURES:

MALE STUDENTS	3 WATER CLOSETS	3 URINALS
FEMALE STUDENTS	9 WATER CLOSETS	
STAFF	3 WATER CLOSETS	

PARKING:
PARKING WITH & WITH OUT BUS LOADING AREA.
149 PARKING SPACES WITH 3 BUS SPACES THIS INCLUDES 8 ACCESSIBLE PARKING SPACES.
157 EXISTING PARKING SPACES WITH OUT BUS PARKING THIS INCLUDES 6 ACCESSIBLE PARKING SPACES.
72 EXISTING PARKING SPACES AT SMITH PARK INCLUDING 2 ACCESSIBLE PARKING SPACES.
36 EXISTING PARKING SPACES AT CHICAGO LOT INCLUDING 1 ACCESSIBLE PARKING SPACE.
265 TOTAL EXISTING PARKING SPACES WITH OUT BUS PARKING.

PROPOSED ADDITIONAL PARKING IF REQUIRED:
19 SPACES IN FRONT OF THE GYM.
27 AT THE CORNER OF 83rd STREET EAST AND COLUMBUS AVE.
1 AT EXISTING SOUTH EAST PARKING PER REVISING ACCESSIBLE PARKING.
312 TOTAL PARKING SPACES EXISTING, NEW AND REVISED THIS INCLUDES 15 ACCESSIBLE PARKING SPACES.

PROPOSED FUTURE PROOF OF PARKING:
SOUTH EAST PLAYING FIELD.
48 PARKING SPACES INCLUDING 2 ACCESSIBLE

SCHOOL HOURS:
MONDAY THROUGH THURSDAY: 7:30 UNTIL 3:00
FRIDAY: 7:30 UNTIL 11:30
GYM TO BE USED ONLY BY STUDENTS DURING SCHOOL HOURS.

GENERAL INFORMATION

CODES USED: 2015 MINNESOTA STATE BUILDING CODE W/ ANSI A117.1-2009 ACCESSIBILITY RULES.
2012 INTERNATIONAL BUILDING CODE
2010 STANDARDS FOR ACCESSIBLE DESIGN
2015 MECHANICAL AND FUEL GAS CODE
2017 NEC
2015 MINNESOTA STATE PLUMBING CODE

EXISTING BUILDING: DAR AL FAROOQ CENTER
WAS SCHOOL BUILDING
FOOT PRINT: 61,130 SQ. FT.
BUILDING USES: MOSQUE (A-3) & SCHOOL (E)
BUILDING CONSTRUCTION ASSUMED TO BE: III-B
NON COMBUSTIBLE CONSTRUCTION
HAS A AUTOMATIC SPRINKLER SYSTEM AND WILL BE REWORKED AS NEEDED.
SURROUNDED AND ADJOINED BY PUBLIC WAYS OR YARDS OF NOT LESS THAN 60 FEET.

SHEET SCHEDULE

A1.1	SITE PLAN WITH PARKING
A1.2	SMITH PARK PARKING LOT
A1.3	NEW PARKING LOT IN FRONT OF GYM.
A1.4.1	EXISTING WEST PARKING LOT
A1.4.2	EXISTING WEST PARKING LOT W/ BUS LOADING/ UNLOADING
A1.5	NEW SOUTH PARKING LOT OFF 83rd ST.
A1.6	BUILDING PLAN WITH CLASS ROOM INFORMATION FOR SCHOOL YEAR 2017 - 2018.
A1.7	BUILDING PLAN WITH CLASS ROOM INFORMATION FOR SCHOOL YEAR 2018 - 2019.

SUCCESS ACADEMY Dar Al Farooq Center

8201 Park Ave South
Bloomington, Mn. 55420

Issues & Revisions:

7-19-18	ENROLLMENT
7-26-18	ENROLLMENT

Comm. No.: **2017041**
Drawn By: **J.K.G.**
Date: **06/20/2018**

SCHOOL OCCUPANCY PLAN 2018 -2019

BUILDING PLAN

Sheet No.:

A1.7