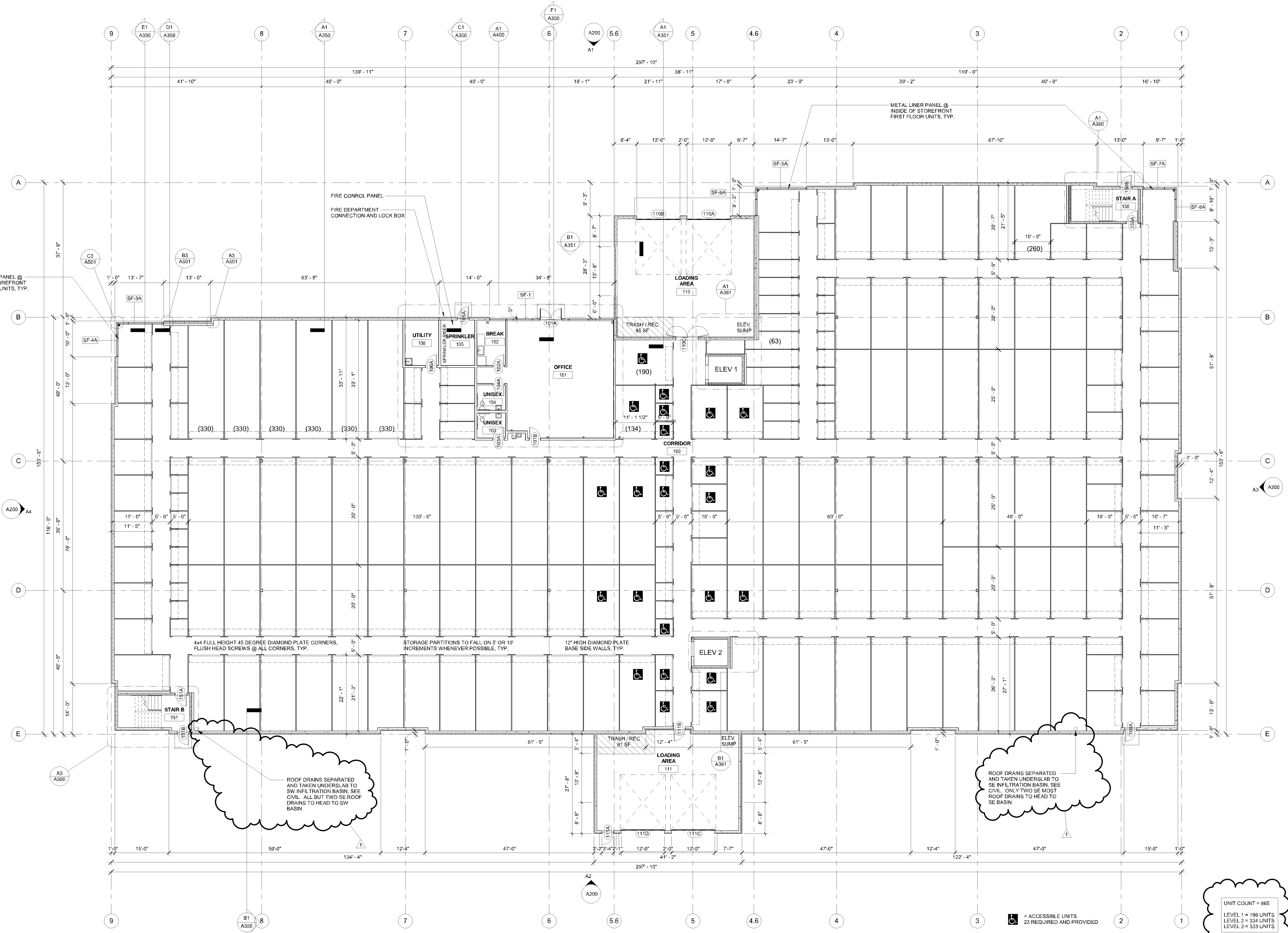


Please include a reference to total number of units provided.



A1 FLOOR PLAN - LEVEL 1  
3/32" = 1'-0"

40,988 GROSS SF THIS LEVEL  
TYPE IIB CONSTRUCTION

UNIT COUNT = 865  
LEVEL 1 = 198 UNITS  
LEVEL 2 = 334 UNITS  
LEVEL 3 = 333 UNITS

**CONTRACTOR**  
BURNS & MCDONNELL Construction  
2550 University Ave W, Suite 201-S  
Chgo, MN 55426

**CLIENT**  
Burns Partners, LLC  
488 West 14th Street  
Chgo, MN 55426

**DATE**  
7-27-18

**PROJECT**  
AMERICAN BOULEVARD STORAGE

**PROJECT #**  
17-106

**DATE**  
7-27-18

**DATE 2**  
7-27-18

**DATE 3**  
7-27-18

**DATE 4**  
7-27-18

**DATE 5**  
7-27-18

**DATE 6**  
7-27-18

**DATE 7**  
7-27-18

**DATE 8**  
7-27-18

**DATE 9**  
7-27-18

**DATE 10**  
7-27-18

**DATE 11**  
7-27-18

**DATE 12**  
7-27-18

**DATE 13**  
7-27-18

**DATE 14**  
7-27-18

**DATE 15**  
7-27-18

**DATE 16**  
7-27-18

**DATE 17**  
7-27-18

**DATE 18**  
7-27-18

**DATE 19**  
7-27-18

**DATE 20**  
7-27-18

**DATE 21**  
7-27-18

**DATE 22**  
7-27-18

**DATE 23**  
7-27-18

**DATE 24**  
7-27-18

**DATE 25**  
7-27-18

**DATE 26**  
7-27-18

**DATE 27**  
7-27-18

**DATE 28**  
7-27-18

**DATE 29**  
7-27-18

**DATE 30**  
7-27-18

**DATE 31**  
7-27-18

**DATE 32**  
7-27-18

**DATE 33**  
7-27-18

**DATE 34**  
7-27-18

**DATE 35**  
7-27-18

**DATE 36**  
7-27-18

**DATE 37**  
7-27-18

**DATE 38**  
7-27-18

**DATE 39**  
7-27-18

**DATE 40**  
7-27-18

**DATE 41**  
7-27-18

**DATE 42**  
7-27-18

**DATE 43**  
7-27-18

**DATE 44**  
7-27-18

**DATE 45**  
7-27-18

**DATE 46**  
7-27-18

**DATE 47**  
7-27-18

**DATE 48**  
7-27-18

**DATE 49**  
7-27-18

**DATE 50**  
7-27-18

**DATE 51**  
7-27-18

**DATE 52**  
7-27-18

**DATE 53**  
7-27-18

**DATE 54**  
7-27-18

**DATE 55**  
7-27-18

**DATE 56**  
7-27-18

**DATE 57**  
7-27-18

**DATE 58**  
7-27-18

**DATE 59**  
7-27-18

**DATE 60**  
7-27-18

**DATE 61**  
7-27-18

**DATE 62**  
7-27-18

**DATE 63**  
7-27-18

**DATE 64**  
7-27-18

**DATE 65**  
7-27-18

**DATE 66**  
7-27-18

**DATE 67**  
7-27-18

**DATE 68**  
7-27-18

**DATE 69**  
7-27-18

**DATE 70**  
7-27-18

**DATE 71**  
7-27-18

**DATE 72**  
7-27-18

**DATE 73**  
7-27-18

**DATE 74**  
7-27-18

**DATE 75**  
7-27-18

**DATE 76**  
7-27-18

**DATE 77**  
7-27-18

**DATE 78**  
7-27-18

**DATE 79**  
7-27-18

**DATE 80**  
7-27-18

**DATE 81**  
7-27-18

**DATE 82**  
7-27-18

**DATE 83**  
7-27-18

**DATE 84**  
7-27-18

**DATE 85**  
7-27-18

**DATE 86**  
7-27-18

**DATE 87**  
7-27-18

**DATE 88**  
7-27-18

**DATE 89**  
7-27-18

**DATE 90**  
7-27-18

**DATE 91**  
7-27-18

**DATE 92**  
7-27-18

**DATE 93**  
7-27-18

**DATE 94**  
7-27-18

**DATE 95**  
7-27-18

**DATE 96**  
7-27-18

**DATE 97**  
7-27-18

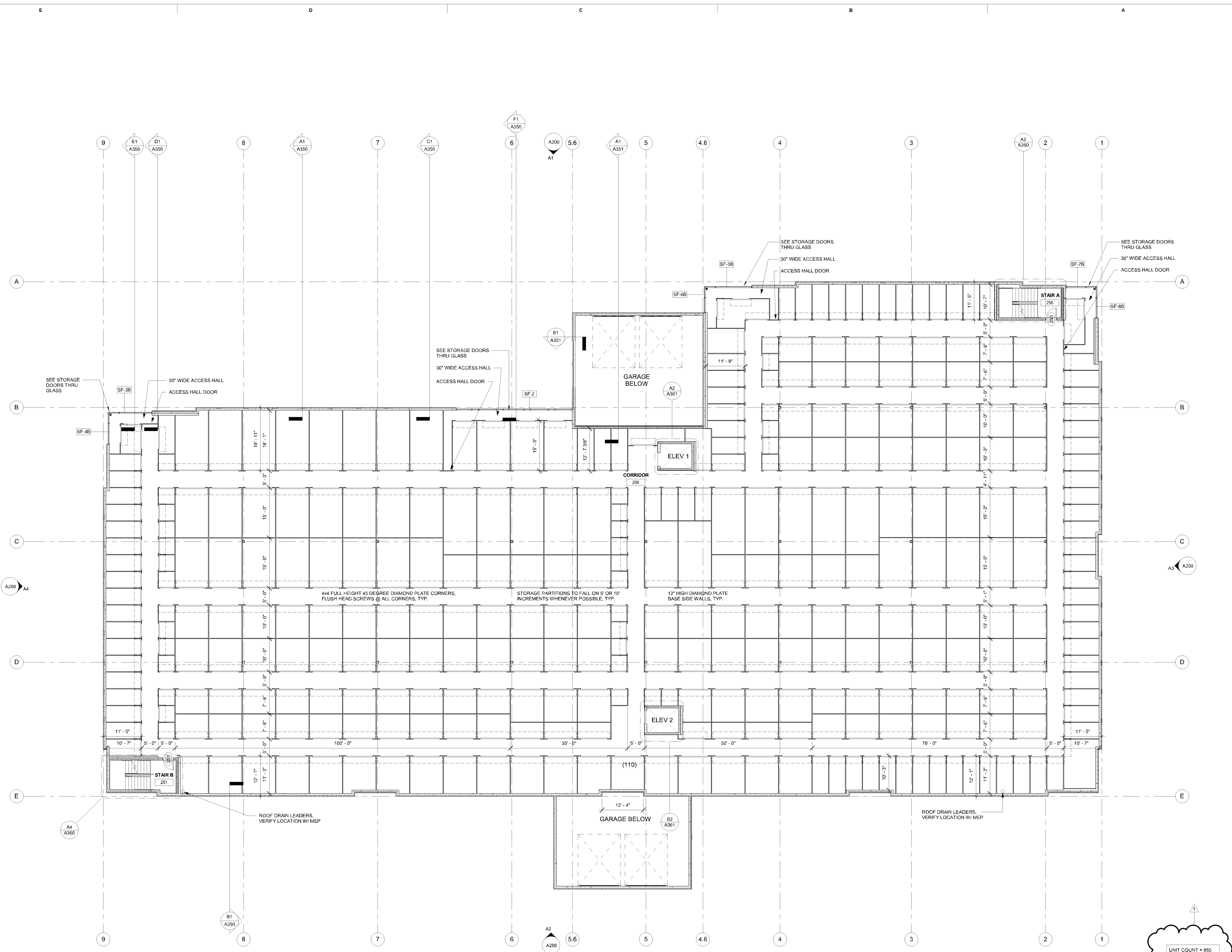
**DATE 98**  
7-27-18

**DATE 99**  
7-27-18

**DATE 100**  
7-27-18

**AMERICAN BOULEVARD STORAGE**  
101 AMERICAN BOULEVARD, BLOOMINGTON, MN

**FLOOR PLAN - LEVEL 1**



**A1 FLOOR PLAN - LEVEL 2**  
3/32" = 1'-0"

**38,482 GROSS SF THIS LEVEL**  
TYPE IIB CONSTRUCTION

**UNIT COUNT = 885**  
LEVEL 1 = 198 UNITS  
LEVEL 2 = 334 UNITS  
LEVEL 3 = 333 UNITS

**CLIENT** Storage Partners, LLC  
200 E. Alameda St., Suite 100B  
Chicago, IL 60602

**CONTRACTOR** Construction  
458 West 14th Street  
Chicago, IL 60607

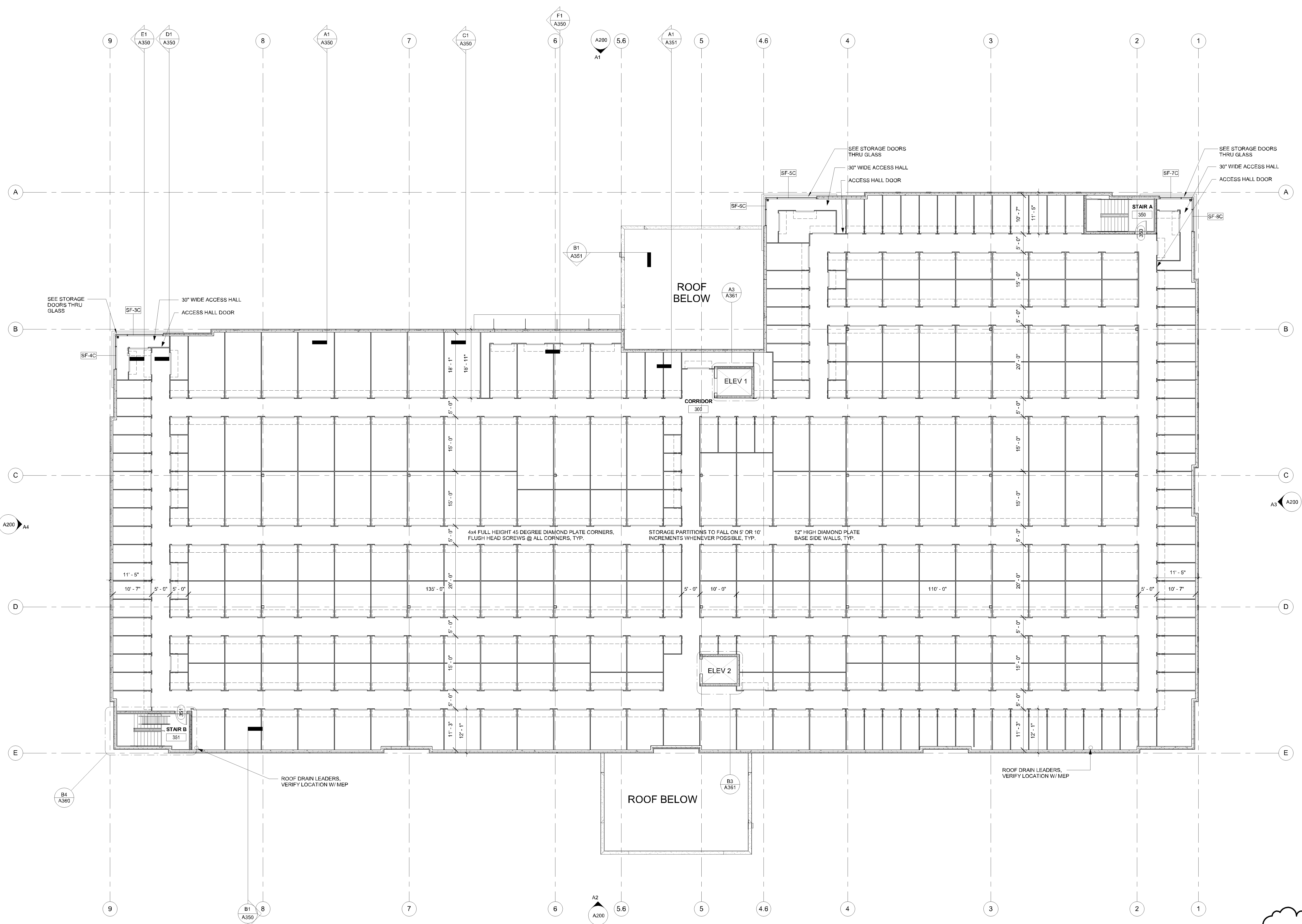
**DATE** 7-27-18

**PROJECT #** 17-106

**DATE** 7-27-18

**DRAWN BY** CW

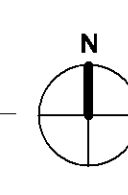
**CHECKED BY** SN

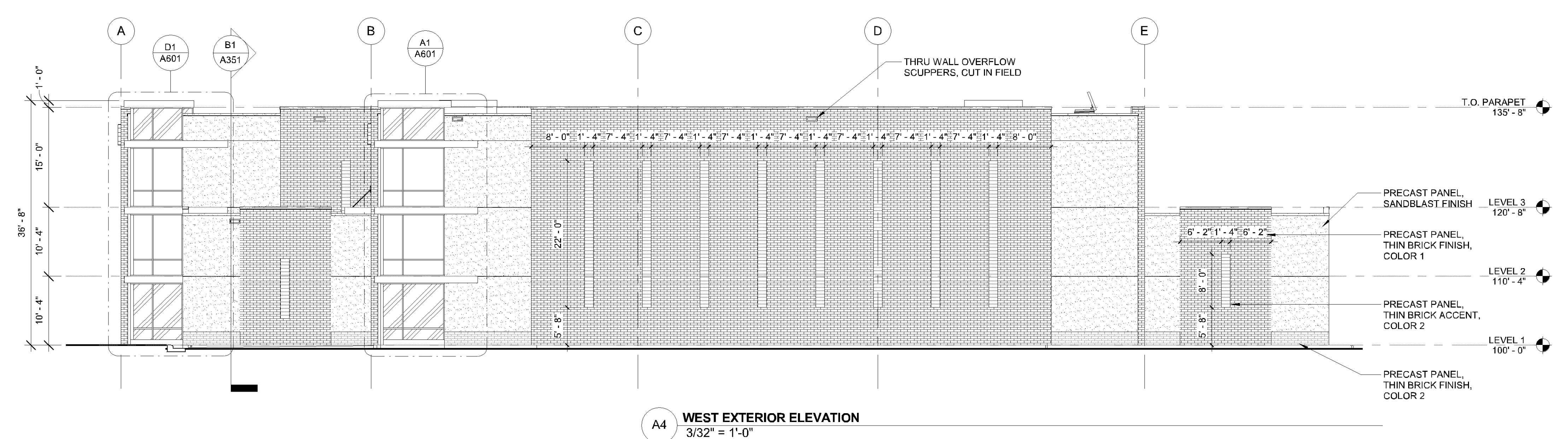


UNIT COUNT = 885  
 LEVEL 1 = 198 UNITS  
 LEVEL 2 = 334 UNITS  
 LEVEL 3 = 333 UNITS

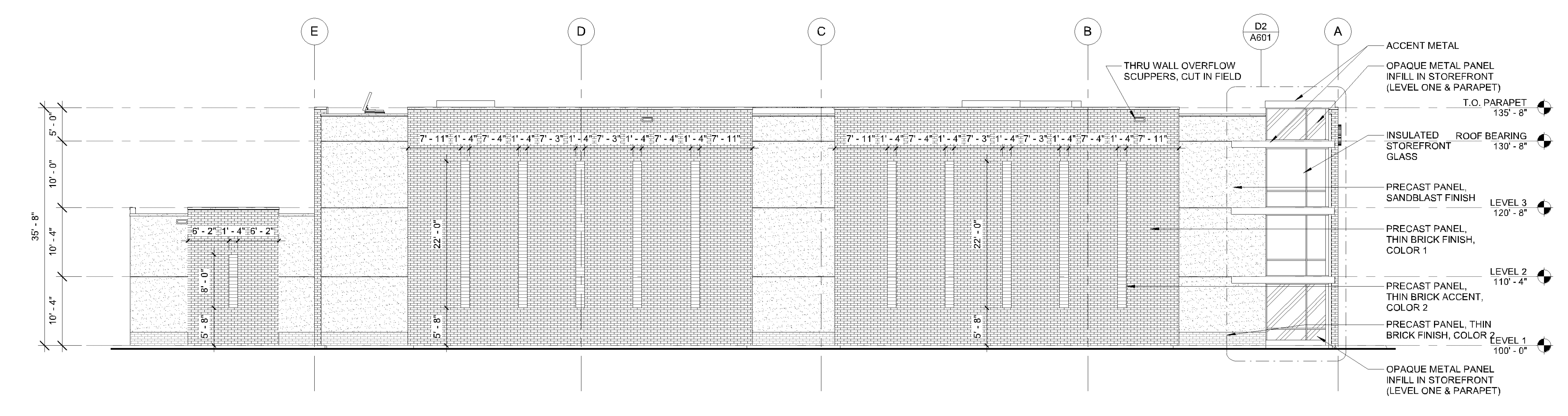
38,482 GROSS SF THIS LEVEL  
 TYPE IIB CONSTRUCTION

**A1 FLOOR PLAN - LEVEL 3**  
 3/32" = 1'-0"

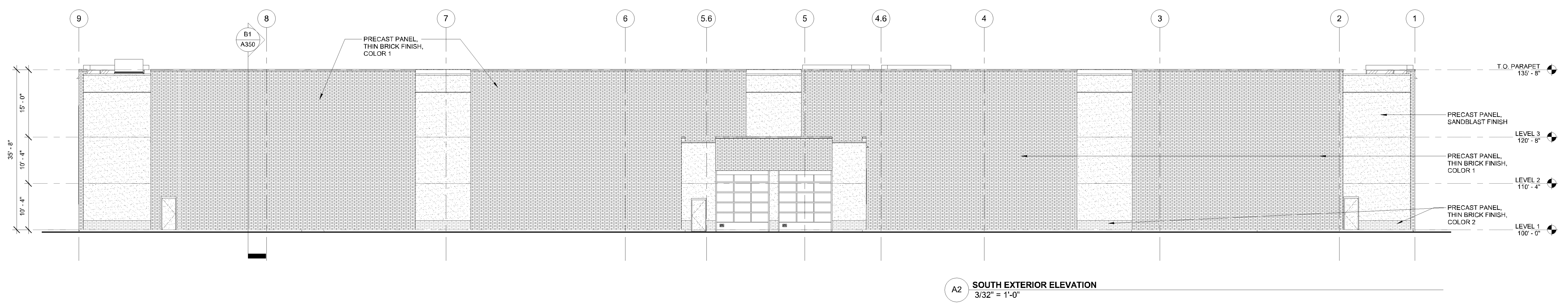




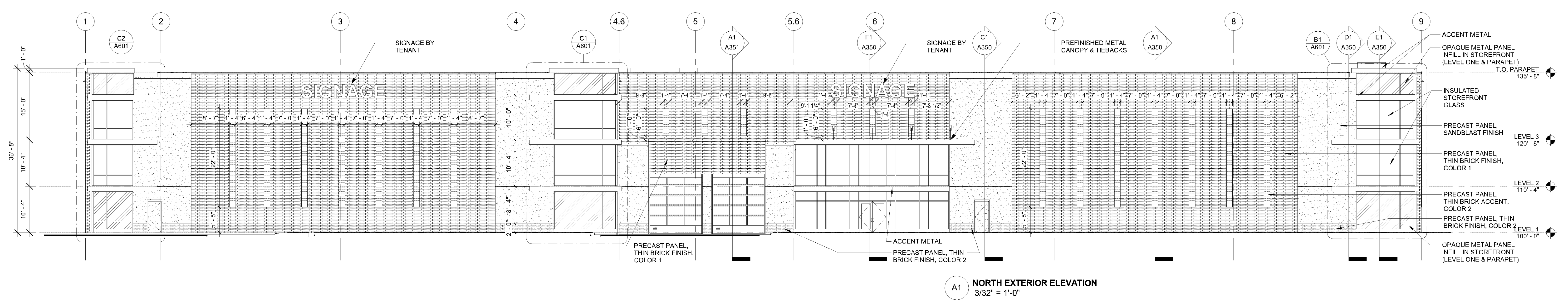
**A4 WEST EXTERIOR ELEVATION**  
 3/32" = 1'-0"



**A3 EAST EXTERIOR ELEVATION**  
 3/32" = 1'-0"



**A2 SOUTH EXTERIOR ELEVATION**  
 3/32" = 1'-0"



**A1 NORTH EXTERIOR ELEVATION**  
 3/32" = 1'-0"