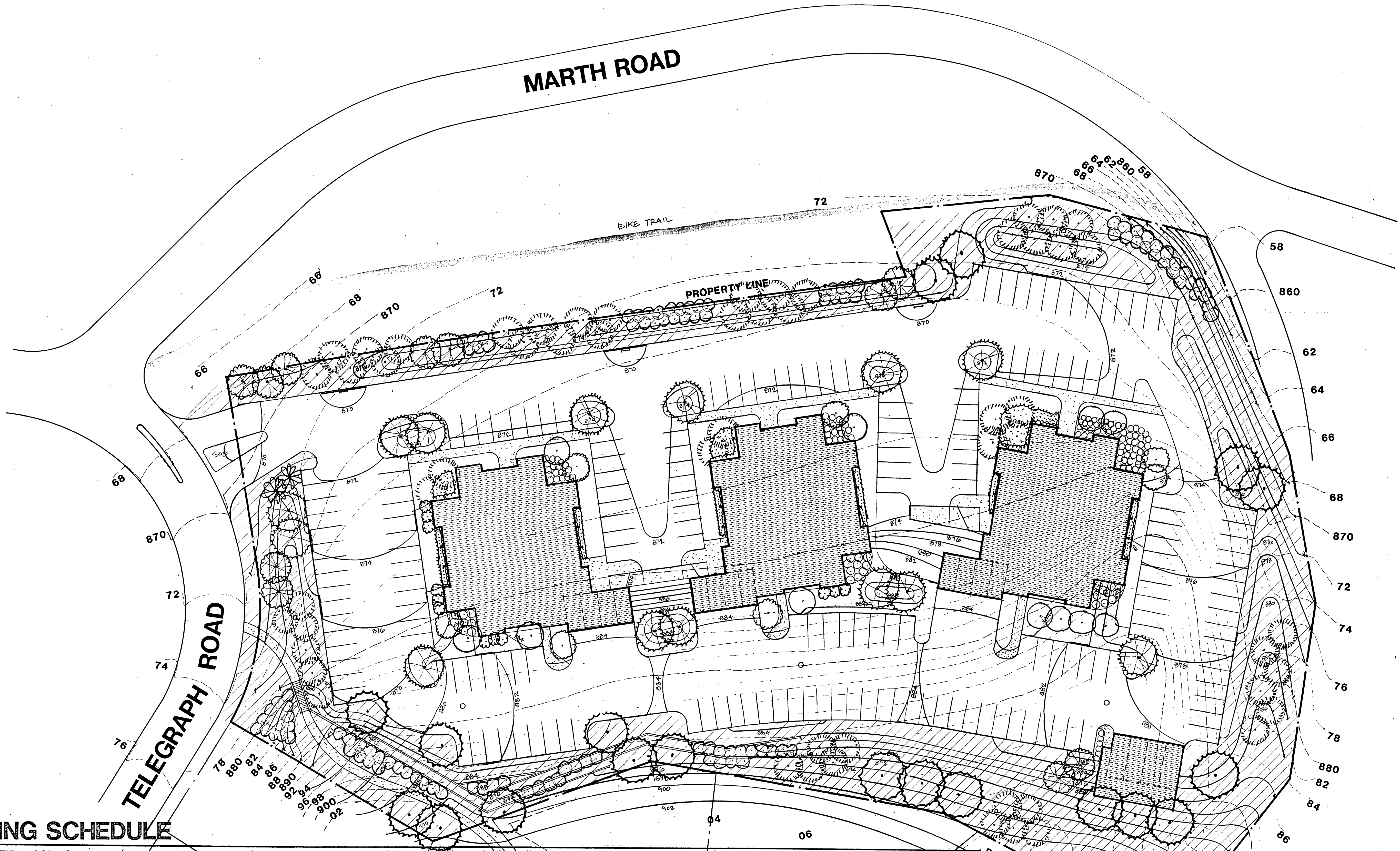


MARTH ROAD

TELEGRAPH ROAD

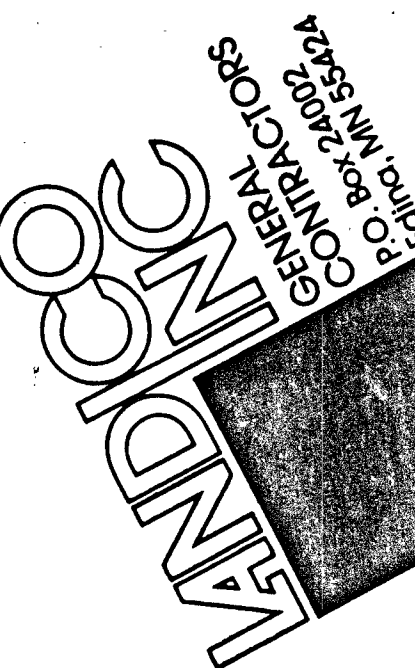


PLANTING SCHEDULE

SYMBOL	QUANTITY	COMMON NAME / LATIN NAME	SIZE	ROOT	REMARKS
	11	AMUR MAPLE	3' HT	BB	SHRUB
	56	ACER GINNALA COLORADO SPRUCE 'GREEN' PICEA PUNGENS	8' HT	BB	
	30	BARBERRY J. RED BERBERIS THUNBERGI ATROPURPUREA	5 GAL	POT	
	98	A W SPIREA SPIREA X BUMALDA A W	2 GAL	POT	5 CANES AT 18"
	165	JUNIPER, PFITZER / 2'-4' DIA BOULDERS JUNIPEROUS CHINENSIS P.	24" DIA 5 GAL	POT	
	19	ASH, MARSHALL / FRAXINUS PENNSYLVANICA LANCEOLATA M.	3" CAL	BB	STRAIGHT LEADER
	14	MAPLE, SUGAR ACER SACCHARUM	3" CAL	BB	SPECIMEN

SYMBOL	QUANTITY	COMMON NAME / LATIN NAME	SIZE	ROOT	REMARKS
	11	CRABAPPLE, HOPA MALUS HOPA	3" CAL	BB	STRAIGHT LEADER
	112	SUMAC, CUTLEAF STAGHORN RHUS TYPHINIA LACINIATA	6'	BR	
	12	HONEYSUCKLE, TATARIAN WHITE LONICERA T ALBA	5 GAL	POT	
	8	CRABAPPLE, SPRING SNOW MALUS S S	3" CAL	BB	STRAIGHT LEADER
	2	JAPANESE TREE LILAC SYRINGA AMURENSIS J.	2" CAL	BB	
		WOOD CHIPS	3" DEEP		OVER POLY
		HIGHWAY SEED MIXTURE			HAY MULCH
		SOD			

IRRIGATE PLANTING BEDS AND SODDED AREAS



I hereby certify that this plan was prepared by me or under my direct supervision and that I am a duly registered professional engineer under the laws of the state of Minnesota.

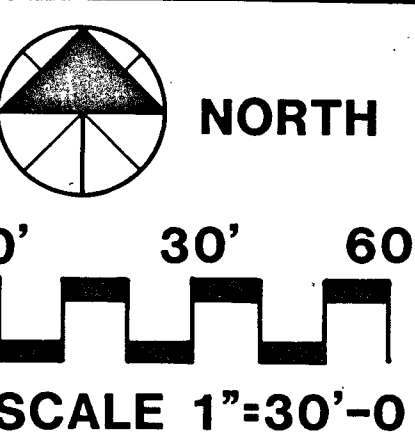
reg no _____ date _____

Revisions	No	Change	By	Date

Proj. No.	Date	Drawn by	Approved
	02AP 94		

TELEGRAPH HILL OFFICES
TELEGRAPH ROAD AT MARTH ROAD
BLOOMINGTON MINNESOTA

SITE PLAN



RECEIVED
DIVISION OF CITY PLANNING
APR 19 1984
CITY OF BLOOMINGTON
MINNESOTA