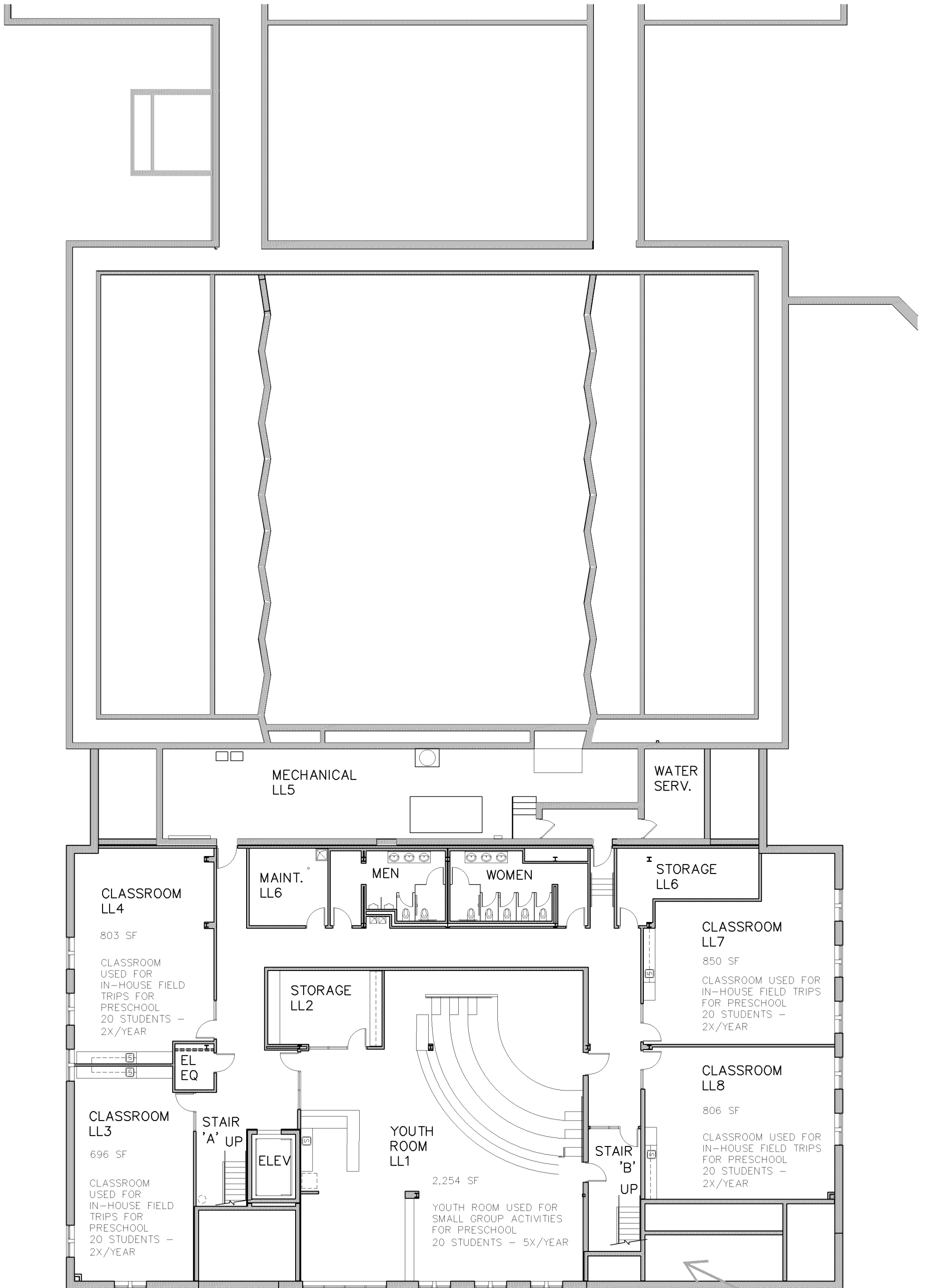
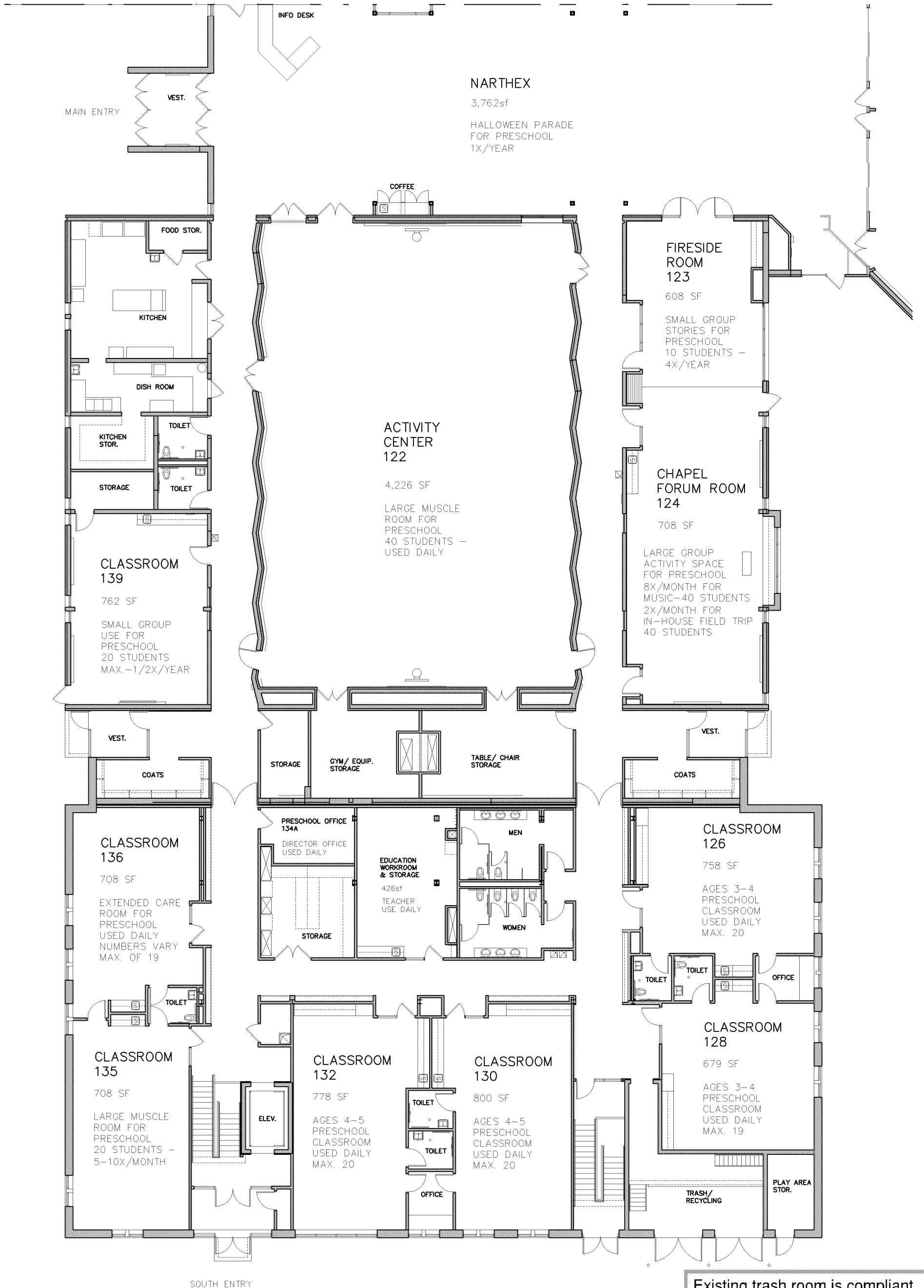


ST. STEPHEN LUTHERAN CHURCH
MAIN LEVEL - PRESCHOOL SPACE USAGE - KEYPLAN



What are these spaces used for?

ST. STEPHEN LUTHERAN CHURCH
LOWER LEVEL - PRESCHOOL SPACE USAGE



ST. STEPHEN LUTHERAN CHURCH
 MAIN LEVEL – PRESCHOOL SPACE USAGE – SOUTH

Existing trash room is compliant.
 Must maintain trash room to be compliant with City Code.

Lighting upgrades not required with this application as the day care has been in use for some time. However, The City Code requires exterior parking lot lighting to be compliant by Dec. 31, 2020.

To be compliant with the parking requirements and to avoid issue, a non-concurrent use condition may be applied for use of the worship space and narthax at the same time. Applicant to verify seating capacity in these spaces.

ST. STEPHEN LUTHERAN CHURCH
MAIN LEVEL – PRESCHOOL SPACE USAGE – NORTH

A portion of the landscaping (for the construction of columbaria) was inspected in 2015-2016 and was compliant. Must maintain planting material on-site as shown on approved Landscape Plan.

