

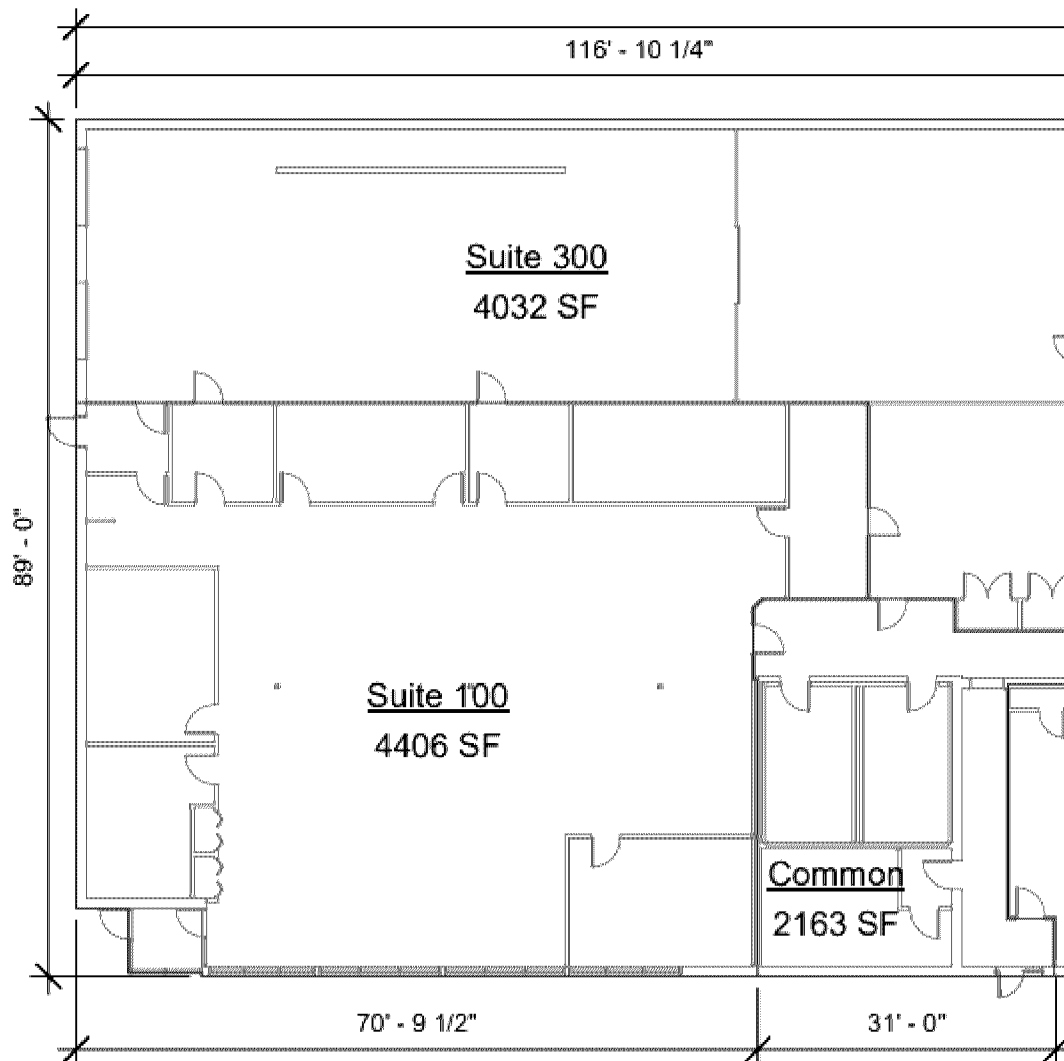
8200 Grand project descriptions

Interior changes:

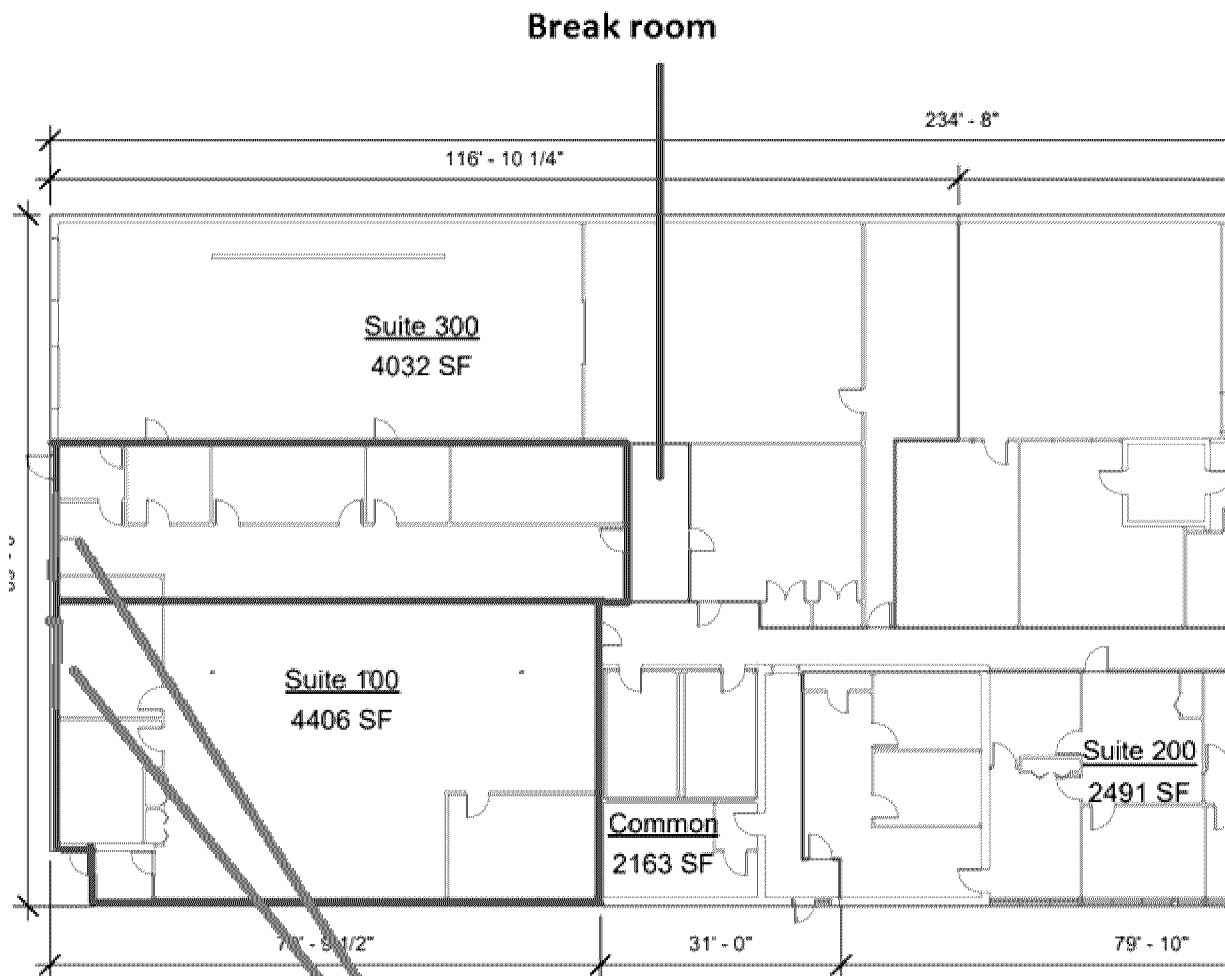
The project converts 4246 sq ft (4406 – 160 sq ft break room) from office space to ware house/ light industrial. The space will be divided into 2 suits, exact size to be determined. Each suite will have a garage door added on the south side of the building. Each bay will have its own exterior door for access (already existing) , and also its own interior door to gain access to the common hallway/bathrooms.

The suite to the east will use the exiting door, the other suite will have a new door added by the break room. Each suite will have its own lighting control.

Exiting layout:



New layout:



**New garage doors.
12 ft wide, 10 ft high**

Exterior changes:

The 5 parking stall that abut the south side of the building will be eliminated. The 2nd and 3rd row parking will be extended towards the west with the furthest spot ending at the existing curb.

Current parking layout:



New parking layout:

