

CASE FILE #PL201900104

REQUIRED:
14 TREES + 56 SHRUBS AND PLANT A REPLACEMENT TREE FOR EVERY TREE REMOVED

NOTE:
7 TREES REMOVED;
7 REPLACEMENT TREES ADDED + 15 NEW TREES = 22 TOTAL TREES ADDED

Plant Schedule

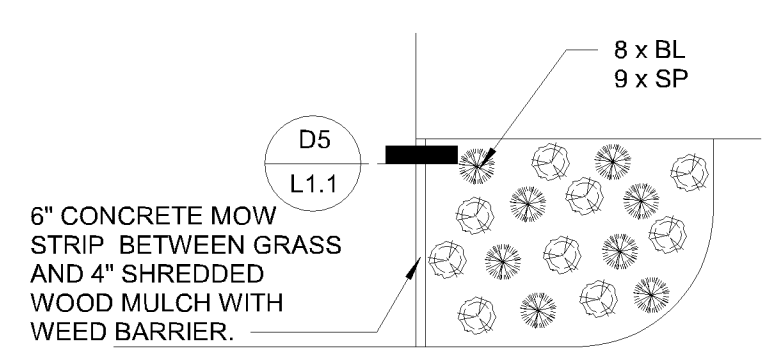
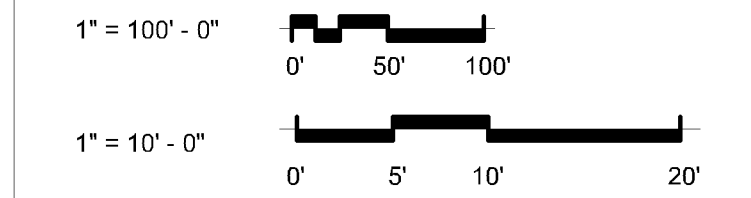
	SYMBOL	QTY.	COMMON NAME	BOTANICAL NAME	HEIGHT	METHOD	REMARKS
A.	WO	7	OAK WHITE	QUERCUS ALBA	100'	BB	-
B.	CS	10	CRAB STARLIGHT	XX	15'-25'	BB	-
C.	SW	5	SPRUCE WHITE	PICEA GLAUCA	50'-100'	TREE SPADE, CLUMP	-
D.	SP	16	WHITE SPIREA	SPIRAEA ALBIFLORA	24"	CONT.	-
E.	BL	40	BLOOMRANG DARK LILAC	SYRINGA X SMSJBP7	18"	CONT.	-

Material Keying Legend

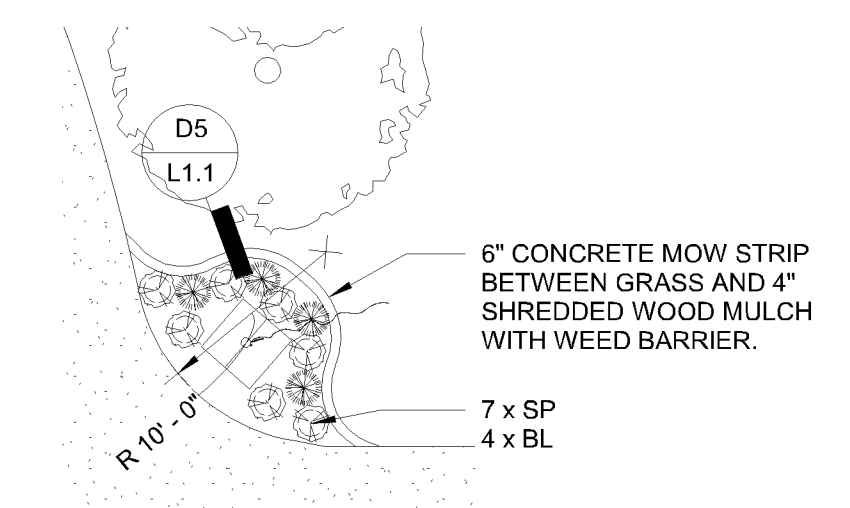
General Notes

- SEE CIVIL AND STRUCT. FOR DETAILS OF JOINTS IN CONC. PAVING, CONC. CURBS, CURB CUTS & CONC. APRONS. KEEP CONSTRUCTION TRAFFIC OUT OF RESIDENTIAL STREETS AS MUCH AS POSSIBLE.
- INSTALL SOD AT TURF AREAS DISTURBED BY CONSTRUCTION. COORDINATE EXISTING LAWN IRRIGATION SYSTEM. MODIFY WHERE REQUIRED.

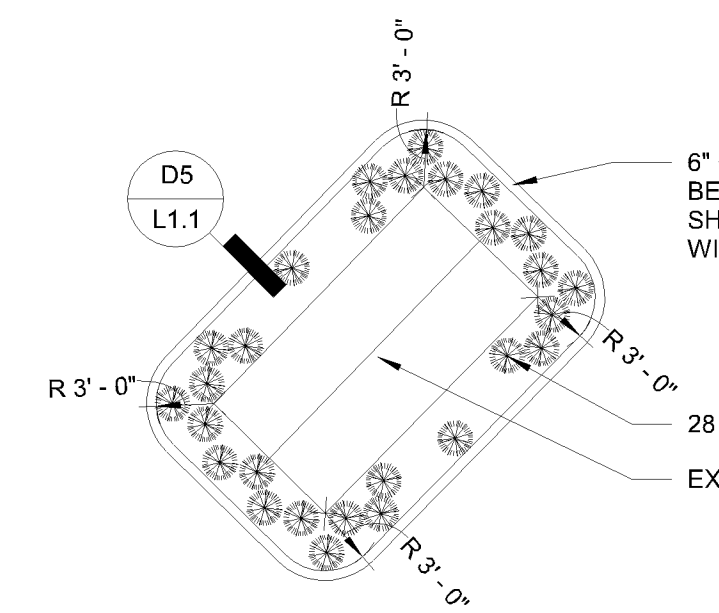
Graphic Scale



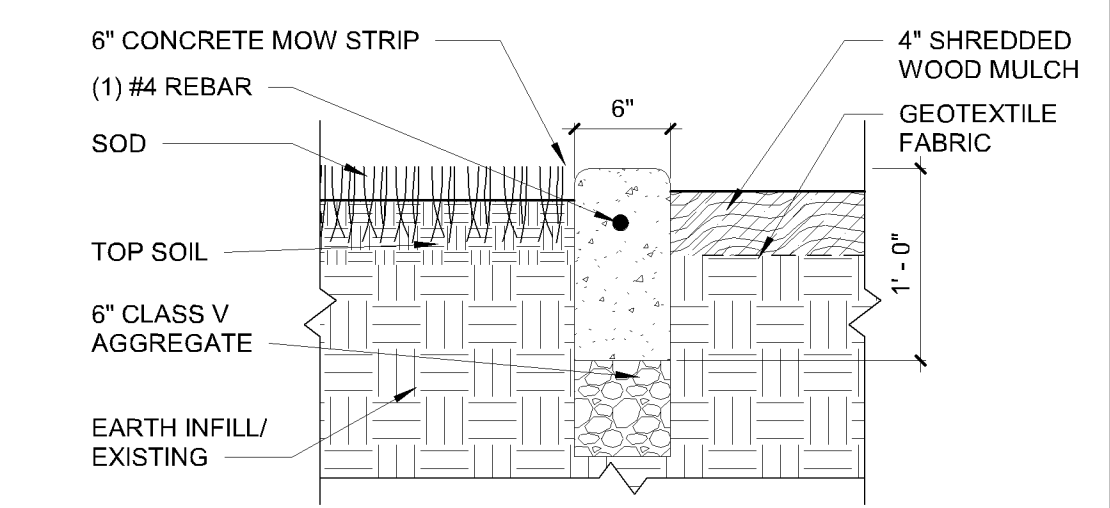
B4 L1.1 NW PARKING LOT LANDSCAPE DETAIL ALT NO. 1 1" = 10'-0"



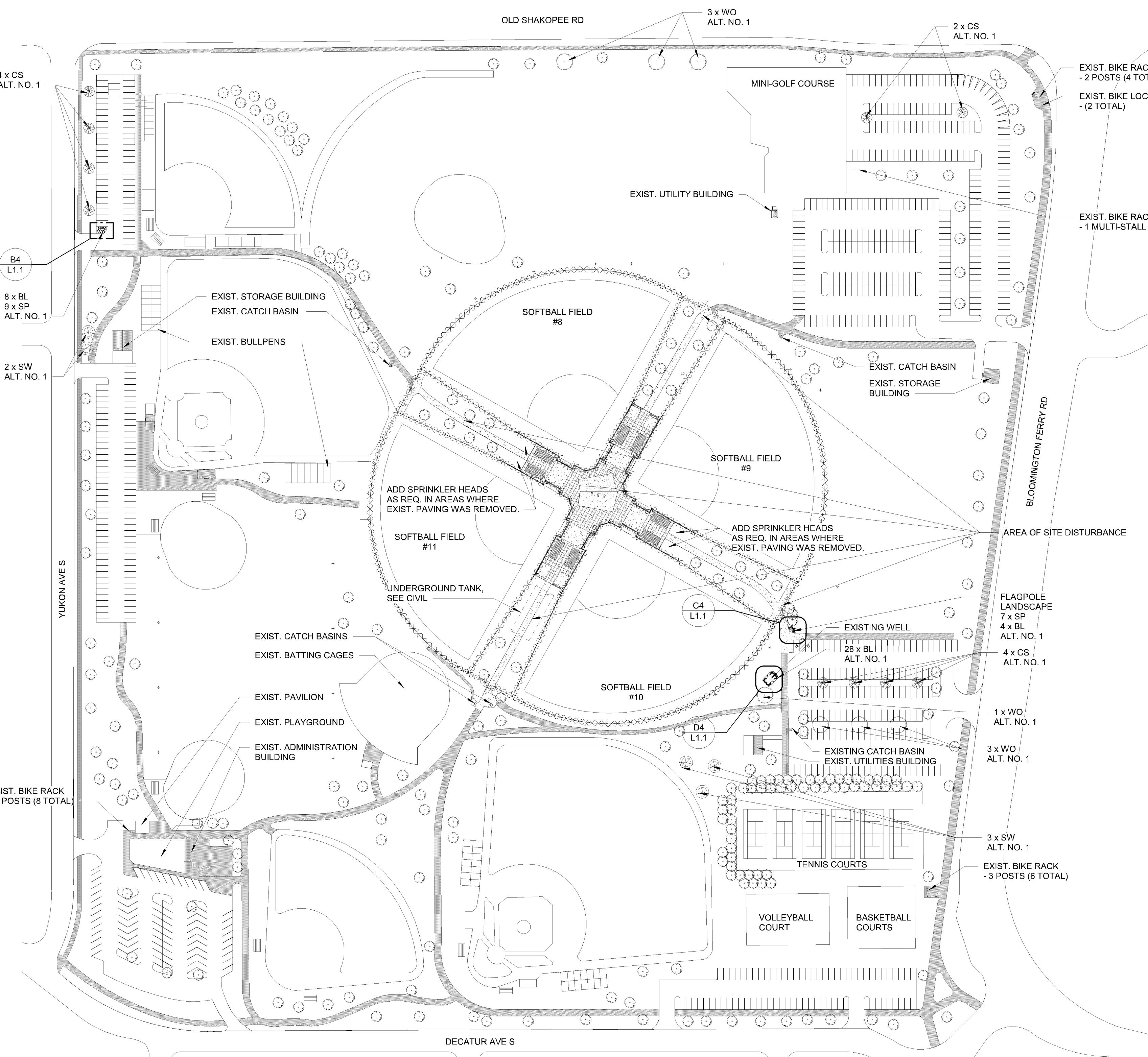
C4 L1.1 FLAG POLE LANDSCAPE DETAIL ALT NO. 1 1" = 10'-0"



D4 L1.1 EXISTING WELL LANDSCAPE DETAIL ALT NO. 1 1" = 10'-0"



D5 L1.1 CONCRETE PLANTER EDGING ALT. NO. 1 1" = 1'-0"



D1 L1.1 LANDSCAPE PLAN 1" = 100'-0"

I hereby certify that this plan, specification, or report was prepared by me or under my direct supervision, and that I am a duly Licensed Architect under the laws of the State of Minnesota.
Date: 08/09/19
Architect: Michael Schulte, AIA
Kodet Architectural Group, Ltd.
License Number: 43901

Date: 08/08/19
Project No.: 106819
Drawn By: DLG
Checked By: TN

Revisions

KODET ARCHITECTURAL GROUP
15 Groveland Terrace | Minneapolis, MN 55403-1154
612.377.2737 | www.kodet.com

City of Bloomington
Dred Scott Wheelhouse Replacement
Bloomington, Minnesota
© 2019 Kodet Architectural Group, Ltd.
The above drawings, specifications and data, design and arrangements represented are and shall remain the property of the Architect, and no part shall be copied, distributed or altered, or used in connection with any other project for which they have been prepared and developed without the written permission of the Architect. Visual contact with these drawings or specifications shall constitute irrefutable evidence of these restrictions.



90% CD SET - NOT FOR CONSTRUCTION

C:\Users\drgreco\KODET\Documents\106819_Bloomington Dred Scott Wheelhouse_CD4_2019_DGRECO\DLG.rvt
8/2/2019 9:38:20 AM