

PL201900134
PL2019-134

Maintain emergency vehicle access and circulation throughout the property.

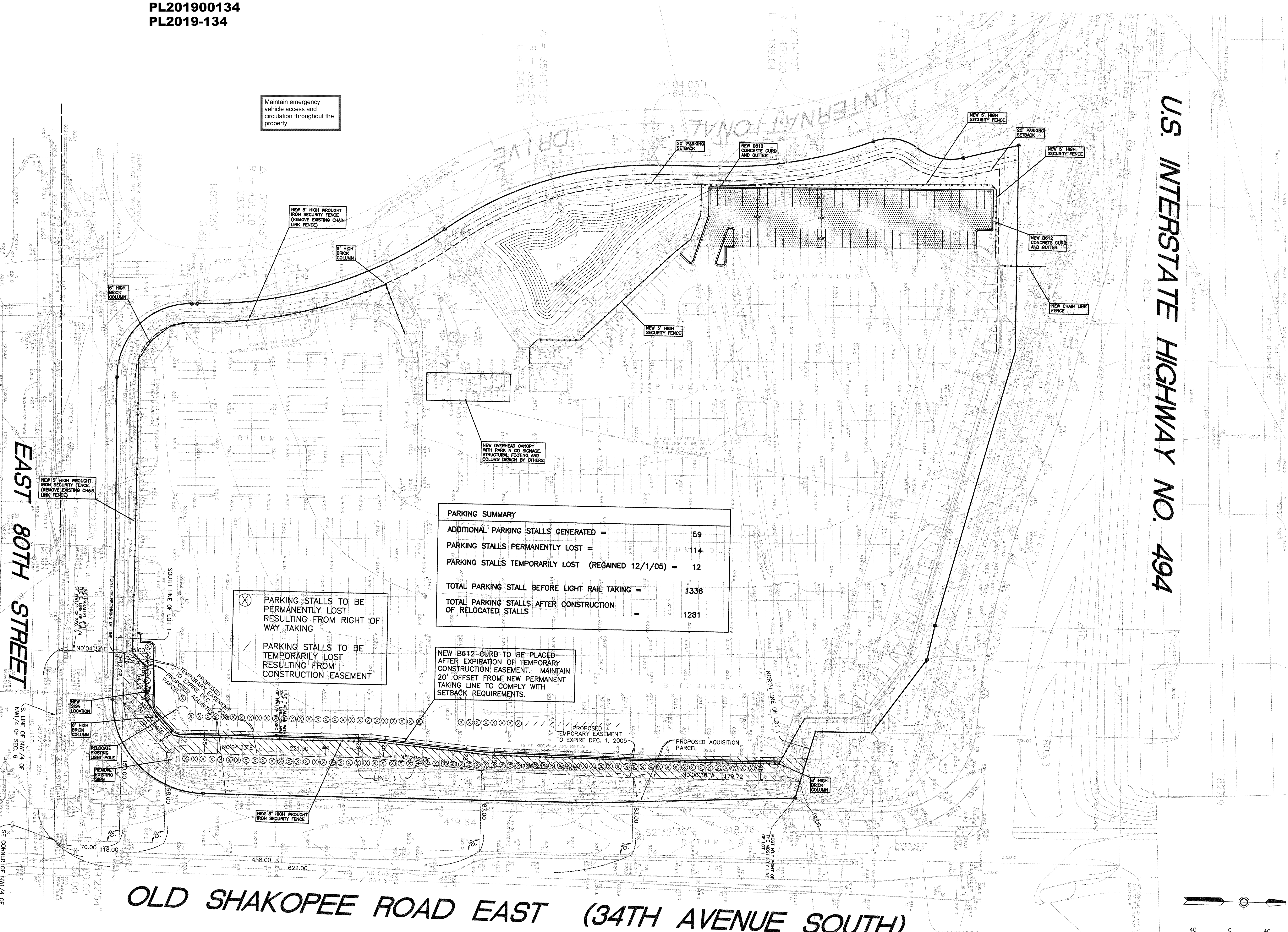
$\Delta = 35^{\circ}13'53''$
 $R = 395.00$
 $L = 246.33$

$\Delta = 21^{\circ}14'07''$
 $R = 455.00$
 $L = 168.64$

$\Delta = 57^{\circ}15'03''$
 $R = 50.00$
 $L = 49.96$

$\Delta = 50^{\circ}25'59''$
 $R = 60.00$
 $L = 52.48$

$\Delta = 52^{\circ}48'00''$
 $R = 50.00$
 $L = 52.48$



PARKING SUMMARY

ADDITIONAL PARKING STALLS GENERATED =	59
PARKING STALLS PERMANENTLY LOST =	114
PARKING STALLS TEMPORARILY LOST (REGAINED 12/1/05) =	12
TOTAL PARKING STALL BEFORE LIGHT RAIL TAKING =	1336
TOTAL PARKING STALLS AFTER CONSTRUCTION OF RELOCATED STALLS =	1281

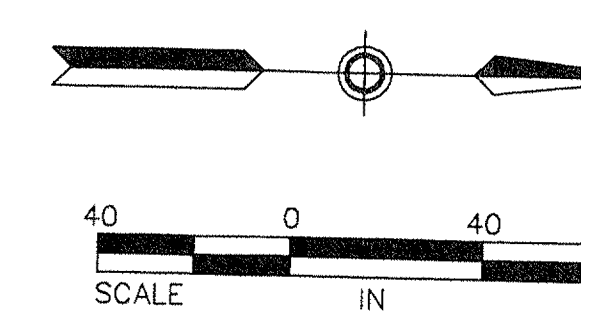
- ⊗ PARKING STALLS TO BE PERMANENTLY LOST RESULTING FROM RIGHT OF WAY TAKING
- ⊘ PARKING STALLS TO BE TEMPORARILY LOST RESULTING FROM CONSTRUCTION EASEMENT

NEW B612 CURB TO BE PLACED AFTER EXPIRATION OF TEMPORARY CONSTRUCTION EASEMENT. MAINTAIN 20' OFFSET FROM NEW PERMANENT TAKING LINE TO COMPLY WITH SETBACK REQUIREMENTS.

U.S. INTERSTATE HIGHWAY NO. 494

EAST 80TH STREET

OLD SHAKOPEE ROAD EAST (34TH AVENUE SOUTH)



Api