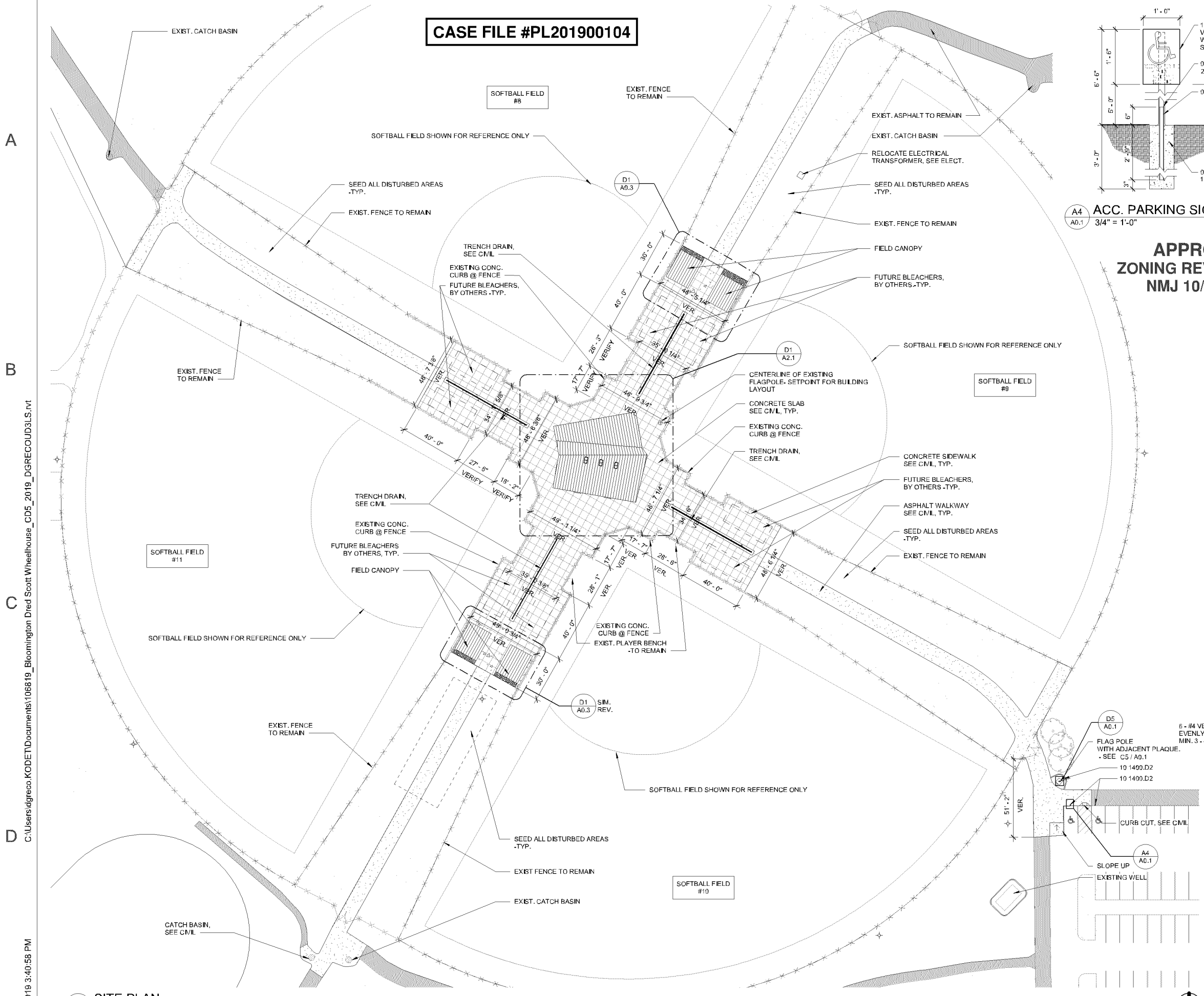
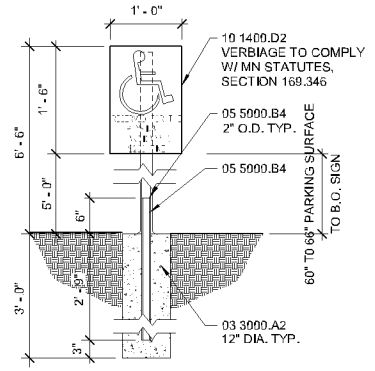


CASE FILE #PL201900104



A4 ACC. PARKING SIGN SECTION
3/4" = 1'-0"



APPROVED
ZONING REVIEW ONLY
NMJ 10/11/2019

Material Key Legend

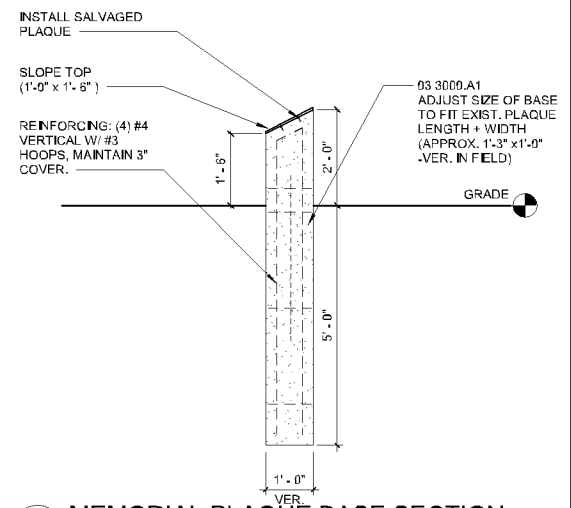
- 03 3000.A1 C.I.P. Concrete
- 03 3000.A2 C.I.P. Concrete Footing
- 05 5000.B4 Steel Pipe
- 10 1400.D2 Handicapped Parking Stall Sign, Steel Pole Mounted
- 10 7500.A1 Flagpole
- 10 7500.B1 Foundation Tube
- 10 7500.C1 Foundation Wedge
- 10 7500.C2 Escutcheon Collar
- 10 7500.Z1 Lightning Protection Rod

General Notes

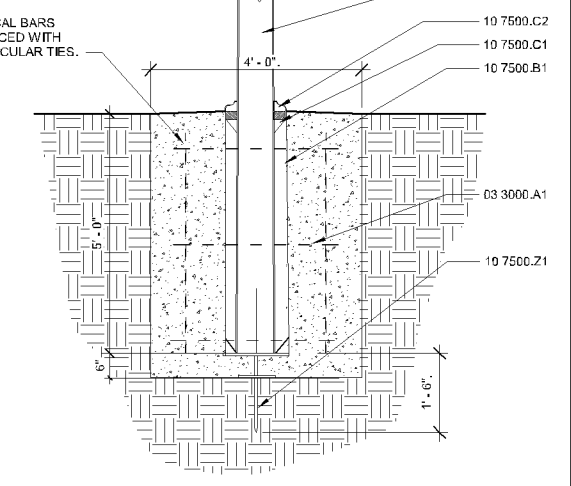
- SEE C.M.L FOR DETAILS OF JOINTS IN CONC. PAVING, CONC. CURBS, CURB CUTS & CONC. APRONS.
- SEE SITE DEMO PLAN FOR WORK AT EXISTING CONCRETE CURB.
- AT LOBBY, SLOPE PAVING TO TRENCH DRAIN. SLOPE 1/4" FT. MAX. IN ANY DIRECTION. ELEVATION AT DOORS TO BE 109' - 0".
- DIMENSIONS AT PAVING APPROXIMATE. - MATCH EXIST.

Graphic Scale

1/32" = 1' - 0"
 1/2" = 1' - 0"
 3/4" = 1' - 0"



C5 MEMORIAL PLAQUE BASE SECTION
1/2" = 1'-0"



D5 FLAGPOLE BASE SECTION DETAIL
1/2" = 1'-0"

D1 SITE PLAN
1/32" = 1'-0"

C:\Users\dgregco\KODET\Documents\106819_Bloomington Dred Scott Wheelhouse_CD5_2019_DGRECOUD3LS.rvt
8/8/2019 3:40:56 PM

Revisions

Date: August 08, 2019
 Project No.: 106819
 Drawn By: KP/DLG
 Checked By: JB

KODET ARCHITECTURAL GROUP
 15 Groveland Terrace | Minneapolis, MN 55403-3154
 612.377.2737 | www.kodet.com

City of Bloomington
 Dred Scott Wheelhouse Replacement
 Bloomington, Minnesota

© 2019 Kodet Architectural Group, Ltd.
 The above drawings, specifications and data, design and arrangements represented are and shall remain the property of the Architect, and no part shall be copied, disseminated or used in connection with any other project for which they have been prepared and developed without the written permission of the Architect. Vendor errors with these drawings or specifications shall constitute a void unless evidence of these mistakes.

A0.1
 Site Plan

CASE FILE #PL201900104

APPROVED ZONING REVIEW ONLY NMJ 10/11/2019

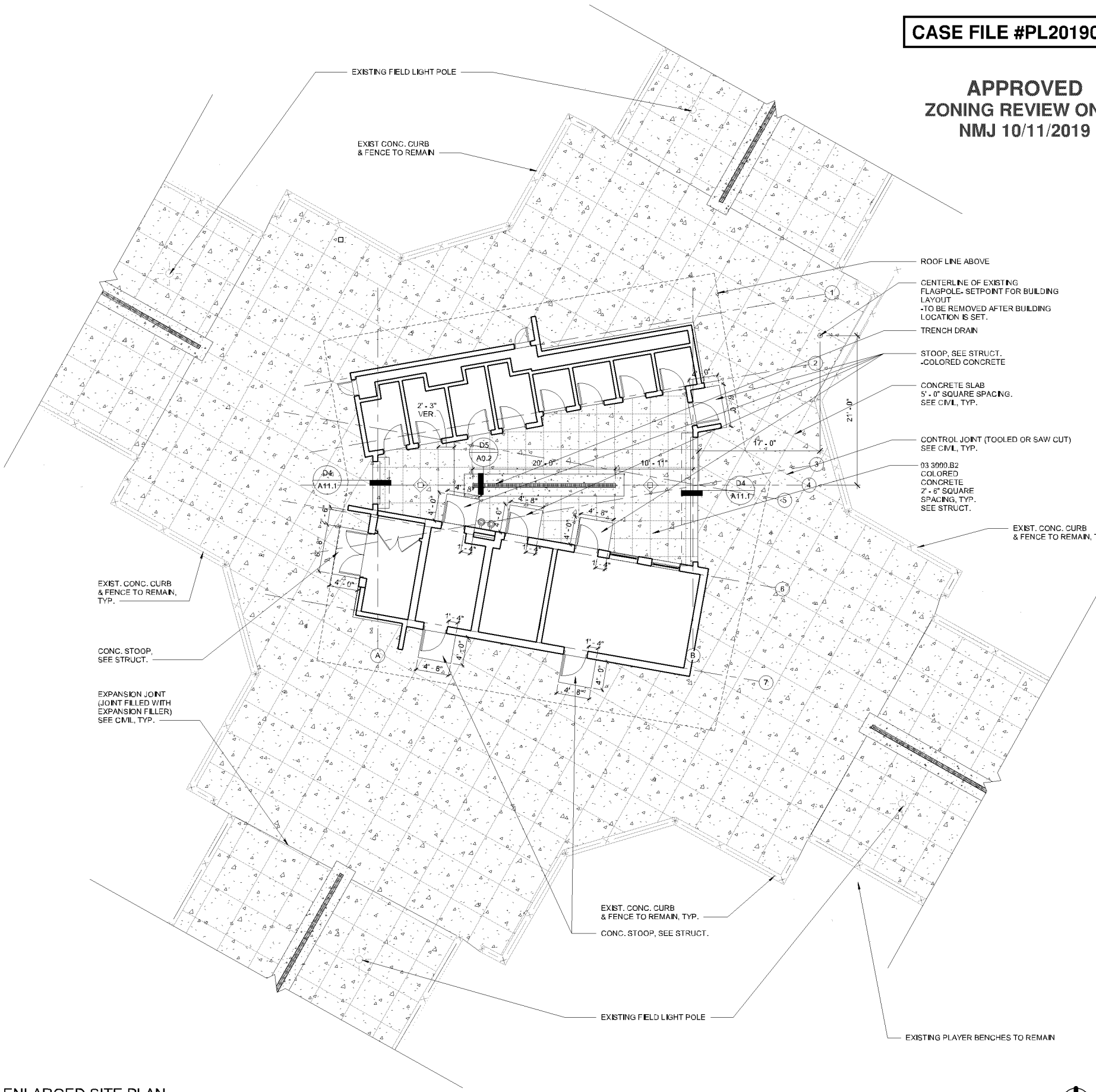
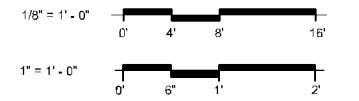
Material Keying Legend

03 3000.B2	4" Concrete Slab
03 3000.J3	Aggregate Cushion
03 3000.K1	Modular Trench Drain w/ Grate

General Notes

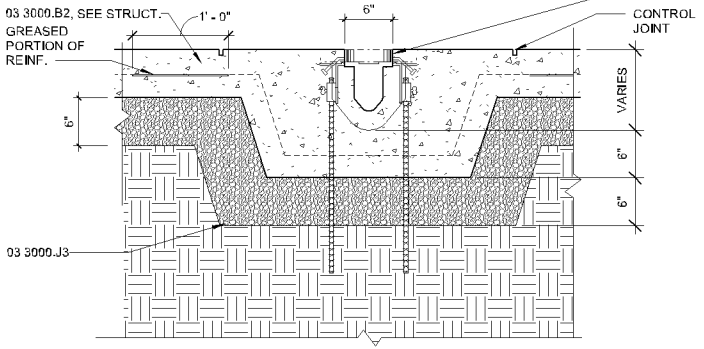
- SEE CIVIL FOR DETAILS OF JOINTS IN CONC. PAVING, CONC. CURBS, CURB CUTS & CONC. APRONS.
- SEE SITE DEMO PLAN FOR WORK AT EXISTING CONCRETE CURB.
- AT LOBBY, SLOPE PAVING TO TRENCH DRAIN. SLOPE 1/4" FT. MAX. IN ANY DIRECTION. ELEVATION AT DOORS TO BE 100'-0".
- DIMENSIONS AT PAVING APPROXIMATE. - MATCH EXIST.

Graphic Scale



NOTE:

- BOTTOM OF TRENCH TO SLOPE TO DRAIN, SEE STRUCT.
- SEE STRUCT. FOR REINFORCING & CONCRETE DIMENSIONS
- THE DEPTH OF THE TRENCH DRAIN VARIES, COORDINATE WITH TRENCH DRAIN MANUFACTURER AND UNDERGROUND PLUMBING. SEE MECH.
- ALL REINF. TO BE EPOXY COATED.
- EXTEND EVERY OTHER REINFORCING TO RUN 1'-0" PAST CONTROL JOINT. GREASE 1'-0" LONG DOWEL END OF REINF. KEEP HALF OF REINF. AS IS TO CREATE A DOWEL SPACING OF 24" O.C. SEE STRUCT. FOR REINFORCING.



D1 ENLARGED SITE PLAN 1/8" = 1'-0"

D5 TRENCH DRAIN SECTION DETAIL 1" = 1'-0"

C:\Users\dgrego\KODET\Documents\106819_Bloomington Dred Scott Wheelhouse_CD5_2019_DGRECOUD3LS.rvt

8/8/2019 3:41:00 PM

Date: August 08, 2019
 Project No.: 106819
 Drawn By: DG
 Checked By: TN

Revisions

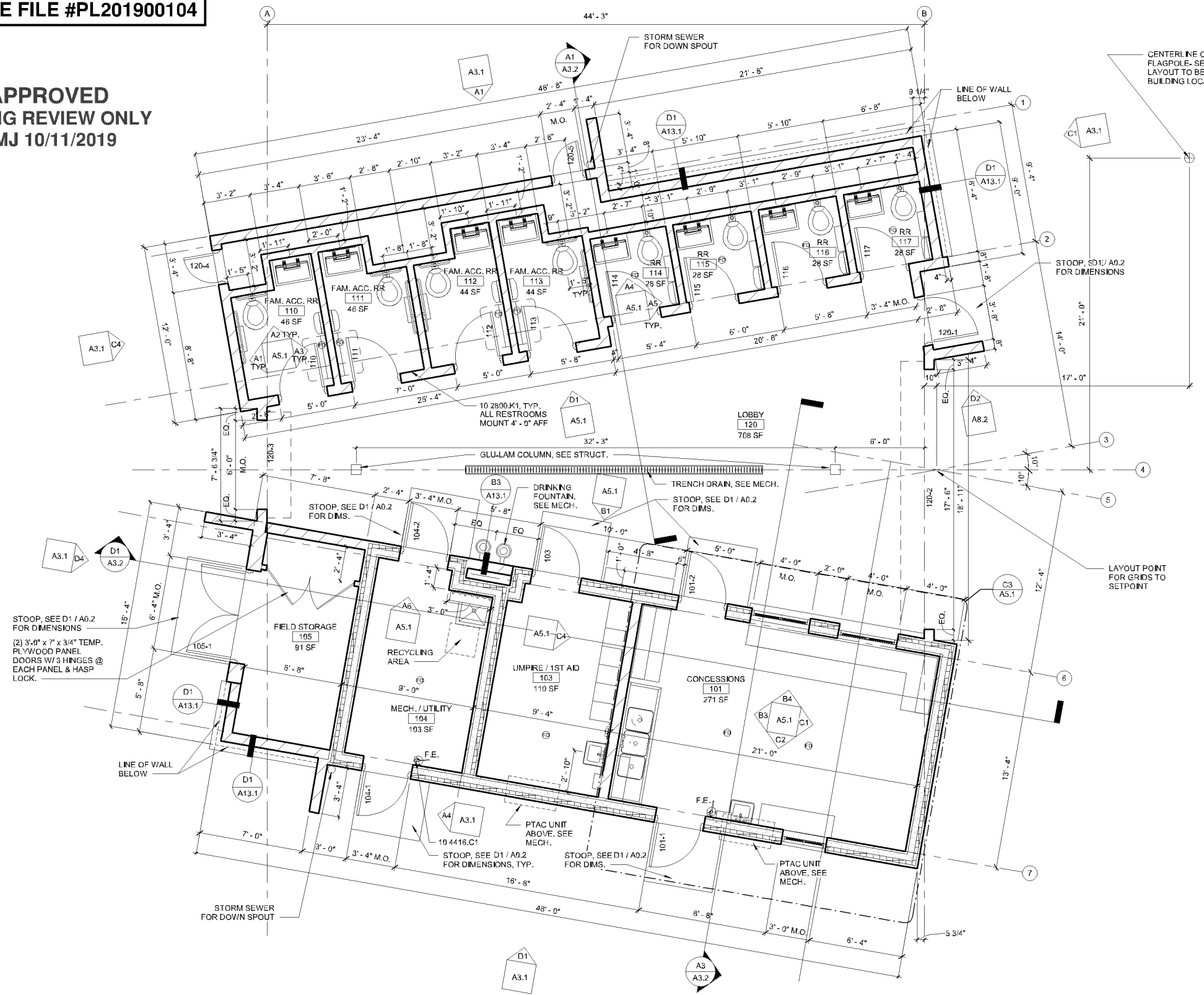
KODET ARCHITECTURAL GROUP
 15 Groveland Terrace | Minneapolis, MN 55403-1154
 612.377.2737 | www.kodet.com

City of Bloomington
 Dred Scott Wheelhouse Replacement
 Bloomington, Minnesota

KODET ARCHITECTURAL GROUP
 A0.2
 Enlarged Site Plan

CASE FILE #PL201900104

APPROVED
ZONING REVIEW ONLY
NMJ 10/11/2019



SEE D4 / A2.2 FOR WALL TYPES AND MASONRY BEARING HEIGHTS

Material Keying Legend

- 10 2800.K1 Double-Prong Robe Hook
- 10 4416.C1 Bracket Mounted Fire Extinguisher

General Notes

- CONCRETE BLOCK DIMENSIONS ON FLOOR PLANS ARE NOMINAL AND TAKEN FROM FACE OF BLOCK.
- AT WOOD STUD PARTITIONS, DIMENSIONS ARE TAKEN FROM CENTERLINE OF STUD.
- FOR PARTITION TYPES, SEE SHEET A8.1.
- TRANSITIONS BETWEEN FLOOR MATERIALS TO BE LOCATED AT CENTERLINE OF DOOR BETWEEN ROOMS UNLESS OTHERWISE NOTED.
- ALL CONDUIT IN EXPOSED CONCRETE BLOCK PARTITIONS TO BE CONCEALED.
- COORDINATE PLUMBING WITHIN CONCRETE BLOCK.
- AT ROOMS WITH FLOOR/TRENCH DRAINS, SLOPE SLAB TO DRAIN IN ENTIRE ROOM. PERIMETER OF ROOM TO BE AT ELEVATION 100'-0" AND SLOPE TO NEVER EXCEED 1/4" PER FOOT. MINIMUM SLOPE IS AS REQUIRED TO PROVIDE POSITIVE DRAINAGE TO DRAIN.
- SLOPE STOOPS AWAY FROM DOOR AT 1/8" / FT, TYP. COORDINATE W/ ADJACENT PAVING.

Code Review

Applicable Codes:
2015 Minnesota Building Code
2015 Minnesota Energy Code
ASHRAE 90.1-2010

A. OCCUPANCY CLASSIFICATION
All areas: B Occupancy (304.1)

B. OCCUPANT LOADS (CODE CALCULATED OCCUPANT LOAD)

Lobby:	708 SF / 15	47 occupants
Concessions:	271 SF / 200	2 occupants
Mech / Utility:	193 SF / 300	1 occupant
Umpire / First Aid:	110 SF / 100	1 occupant
Field Storage:	91 SF / 300	1 occupant
TOTAL:		52 occupants

C. FLOOR AREA
Total 1,575 SF (occupiable), 1,998 SF (building footprint)

D. BASIC ALLOWABLE AREA
B Occupancy, Type V-B (unsprinkled) Construction
Basic Allowable Floor Area for V-B (Table 503) 9000 SF
Actual Area of 1,575 SF < 9000 SF Allowable

E. ALLOWABLE HEIGHT AND STORES, Table 503
B Occupancy, Type V-B, 2 stories, 40' Allowable
Actual Single Story, 20'-0"

F. TYPES OF CONSTRUCTION
Building Element Fire Ratings (Table 601)

Structural Frame	0 hour
Exterior Bearing Walls	0 hour
Interior Bearing Walls	0 hour
Exterior Non-Bearing Walls	0 hour
Interior Non-Bearing Walls	0 hour
Floor Construction	0 hour
Roof Construction	0 hour

G. MEANS OF EGRESS

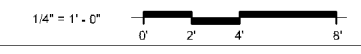
- Means of Egress Sizing (1005.3)
Door = Occupancy x 0.2 = 52 x 0.2 = 10.2" min. Req.
= 36" Provided
- Number of Exits: 1 Exit (Table 1021.2(2))
Occupant load less than 49 occupants through Lobby. Remaining occupants exit directly to exterior.
Travel distance less than 75'

H. REQUIRED PLUMBING FIXTURES (BY CODE OCCUPANCY)
52 Occupants = 26 Men, 26 Women

PLUMBING FIXTURE COUNT (B OCCUPANCY)			
26 Occupants Per Gender			
Water Closets	Lavatories	Drinking Fountains	Service Sink
Men 1:25 first 50 Occ.; 1:50 after 50 Occ. 28/25 = 1 Req.	1:40 first 80 Occ.; 1:80 after 80 Occ. 26/40 = 1 Req.		
Women 1:25 first 50 Occ.; 1:50 after 50 Occ. 26/25 = 1 Req.	1:40 first 80 Occ.; 1:80 after 80 Occ. 26/40 = 1 Req.	1:100 = 52/100 1 Required	1 Required
2 Required Total	2 Required Total	2 Provided	1 Provided
8 Provided	8 Provided	2 Provided	1 Provided
8 Total Water Closets			
Acc. Toilets : 4 Non-Acc. Toilets : 4			

I. RECYCLING SPACE
1,575 sf x .0025 = 3.94 sf REQUIRED
4.00 sf PROVIDED

Graphic Scale



Date: August 08, 2019
Project No.: 106819
Drawn By: KP
Checked By: JB/TN

Revisions

KODET ARCHITECTURAL GROUP
15 Crowland Terrace | Minneapolis, MN 55403-1154
612.377.2737 | www.kodet.com

City of Bloomington
Dred Scott Wheelhouse Replacement
Bloomington, Minnesota

A2.1
Floor Plan &
Code Review

C:\Users\djgrec\Documents\106819_Bloomington Dred Scott Wheelhouse_CD5_2019_DGRECOUD3LS.rvt
8/8/2019 3:41:07 PM

CASE FILE #PL201900104

**APPROVED
ZONING REVIEW ONLY
NMJ 10/11/2019**

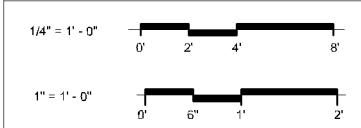
Material Keying Legend

04 2000.D1	Burnished Finish
06 1000.K4	3/4" Exterior Grade Plywood Sheathing
07 4113.M1	Continuous Metal Ridge Vent
07 4213.E1	Metal Soffit Panel
07 5200.A2	Metal Gutter
07 5200.A3	Metal Downspout
08 3323.A2	Power Operated Overhead Coiling Door
08 5553.A2	Sliding Transacation Security Window
08 5200.A1	Plastic Unit Skylight
09 9123.A1	Paint
10 1200.B1	Non-Illuminated Display Case
10 1400.J1	Exterior Illuminated Signage

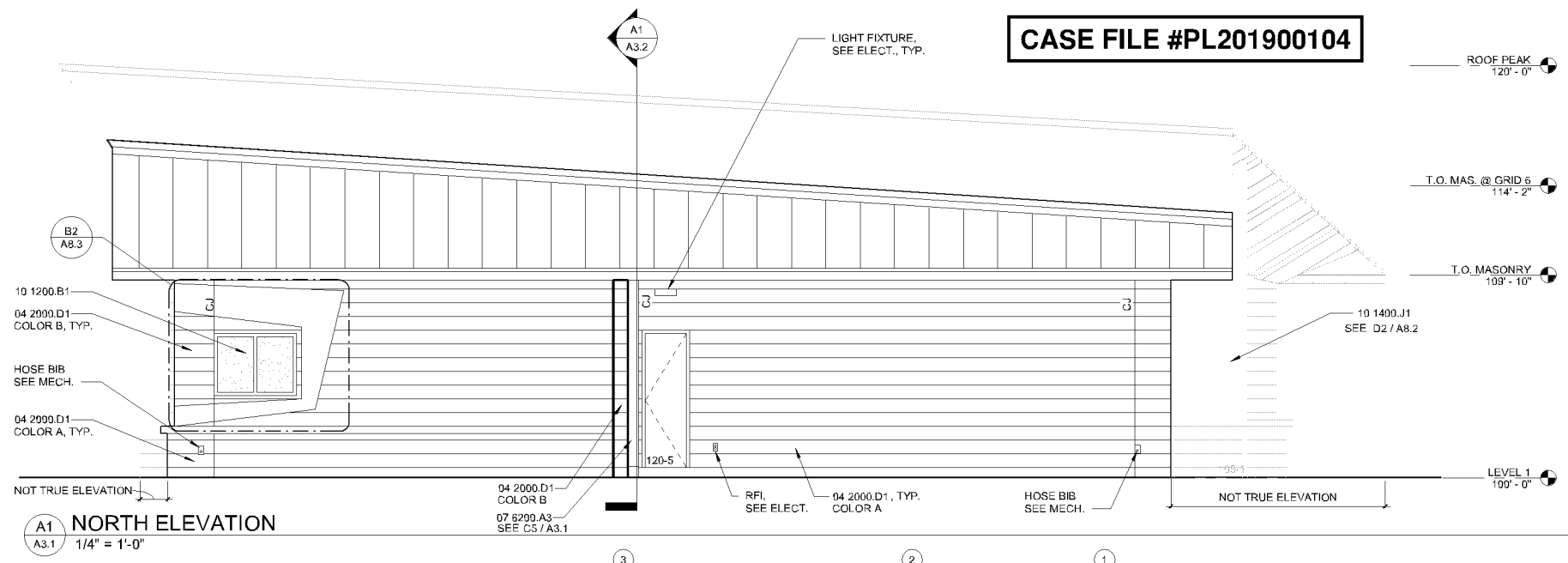
General Notes

- GENERAL CONTRACTOR AND ALL SUBCONTRACTORS SHALL BECOME FAMILIAR WITH THE SITE AND EXISTING CONDITIONS DURING THE BID PERIOD. SUBMITTING A BID FOR THE WORK CONSTITUTES AN UNDERSTANDING BY THE CONTRACTOR/SUBCONTRACTOR OF THESE CONDITIONS.
- PAINT ALL EXTERIOR EXPOSED STEEL WITH EPOXY PAINT, TYP.
- EXPOSED WELDS SHALL BE CONTINUOUS, GRIND SMOOTH. SEE PLAN FOR MASONRY WALL THICKNESSES.
- EXTEND BURNISHED BLOCK FINISH ONE COURSE BELOW GRADE TYP.
- PAINT ROOF PENETRATIONS WITH EPOXY PAINT.

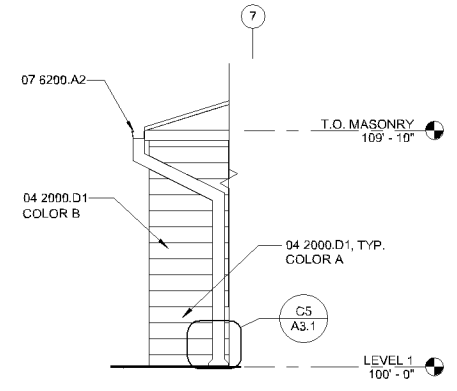
Graphic Scale



A

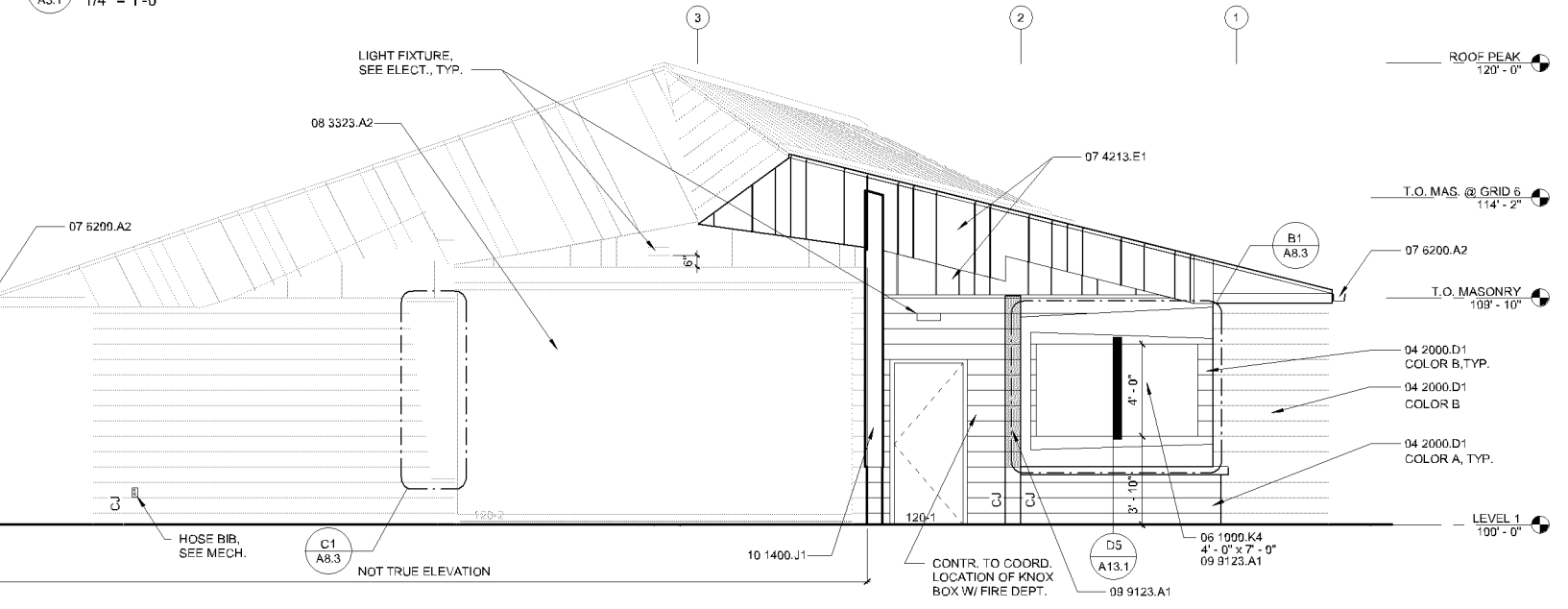


A1 NORTH ELEVATION
A3.1 1/4" = 1'-0"

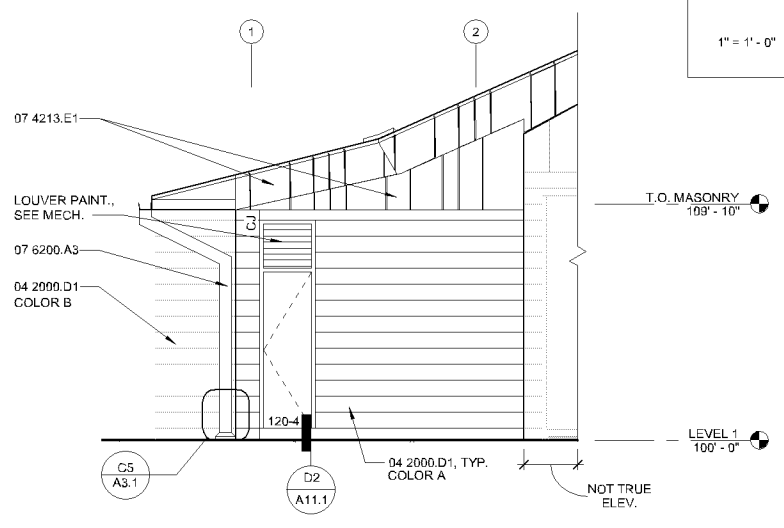


A4 WING WALL W. ELEVATION
A3.1 1/4" = 1'-0"

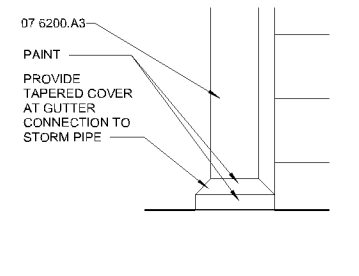
B



C1 EAST ELEVATION
A3.1 1/4" = 1'-0"

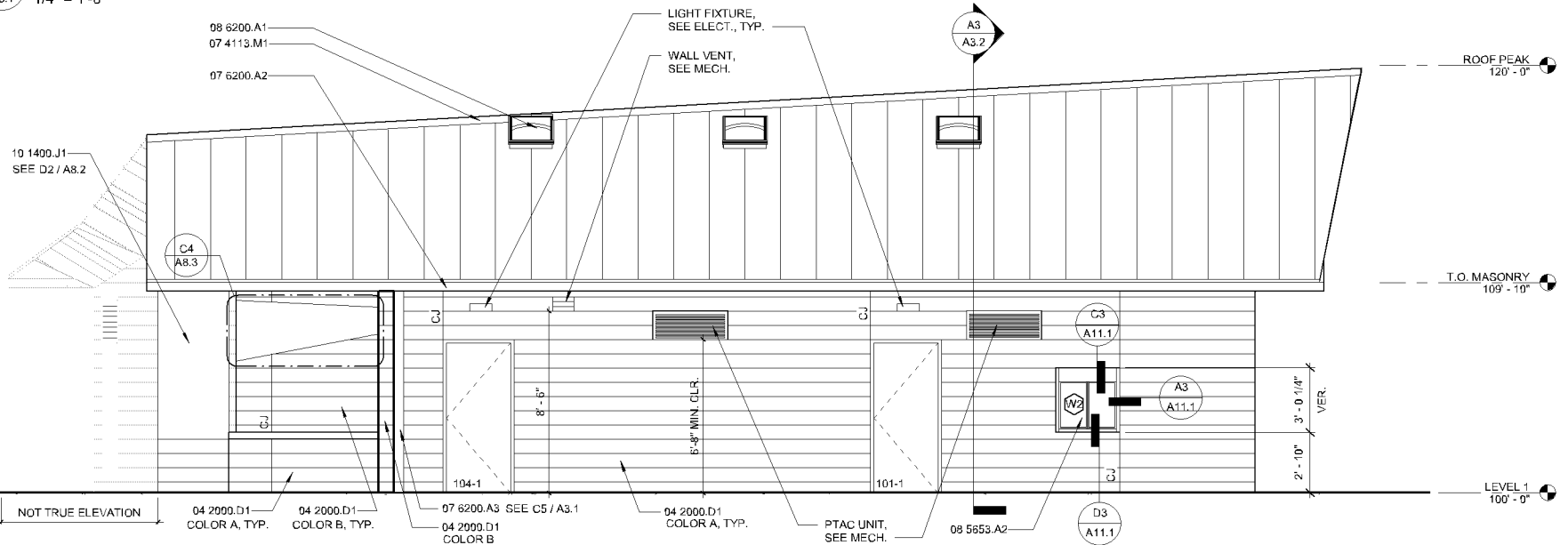


C4 NORTHWEST ELEVATION
A3.1 1/4" = 1'-0"

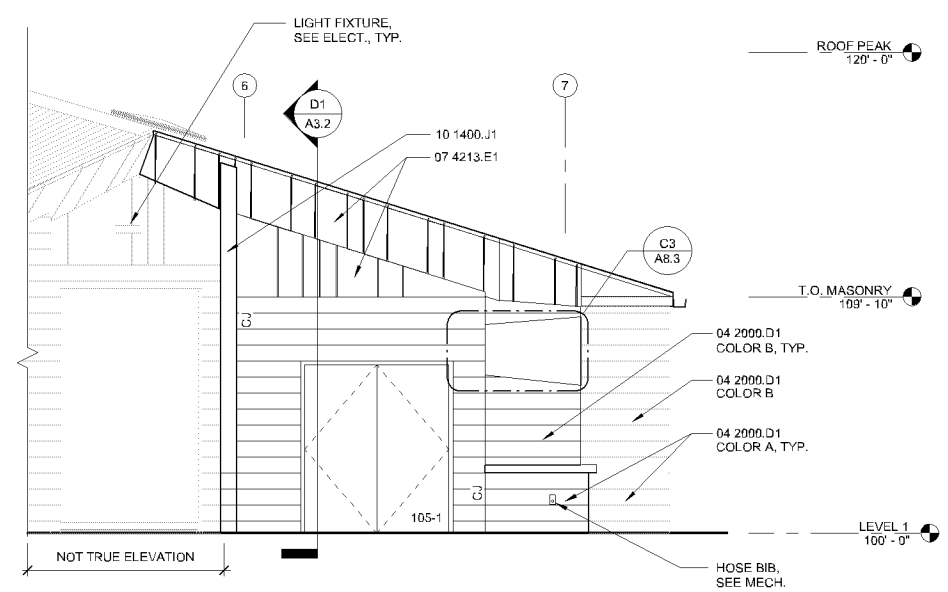


C5 DOWNSPOUT @ GRADE
A3.1 1" = 1'-0"

C



D1 SOUTH ELEVATION
A3.1 1/4" = 1'-0"



D4 SOUTHWEST ELEVATION
A3.1 1/4" = 1'-0"

D

8/9/2019 3:38:27 PM C:\Users\kpatzer\KODET\Documents\106819_Bloomington Dred Scott Wheelhouse_CD5_2019_KPALZER.rvt

Revisions

Date: August 08, 2019
Project No.: 106819
Drawn By: KP
Checked By: JB/TN

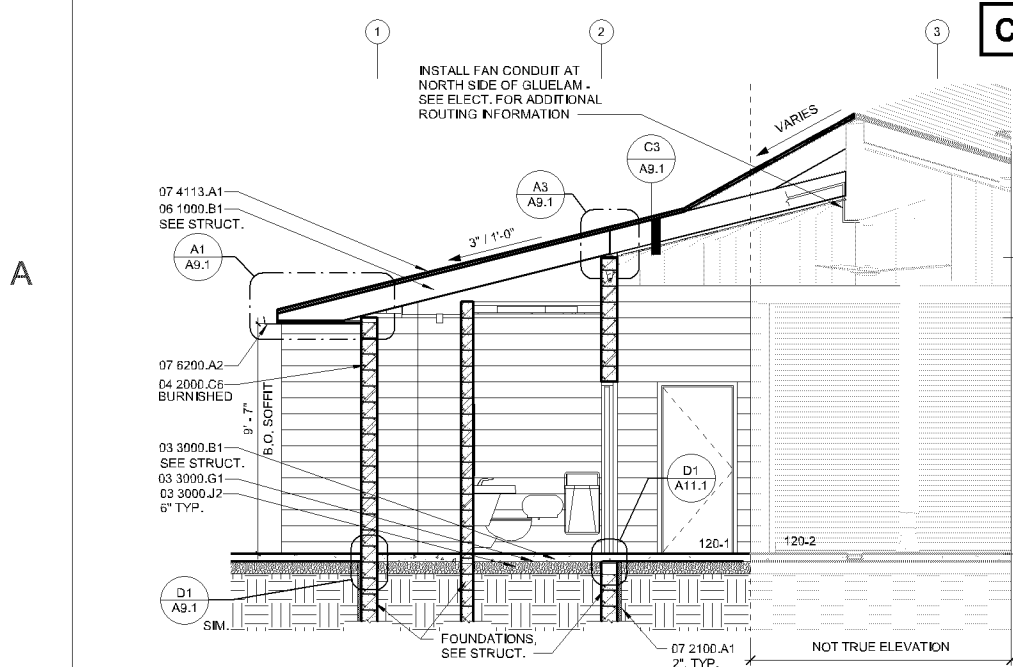
KODET ARCHITECTURAL GROUP
13. Groveland Terrace | Minneapolis, MN 55403-1154
612.377.2737 | www.kodet.com

City of Bloomington
Dred Scott Wheelhouse Replacement
Bloomington, Minnesota

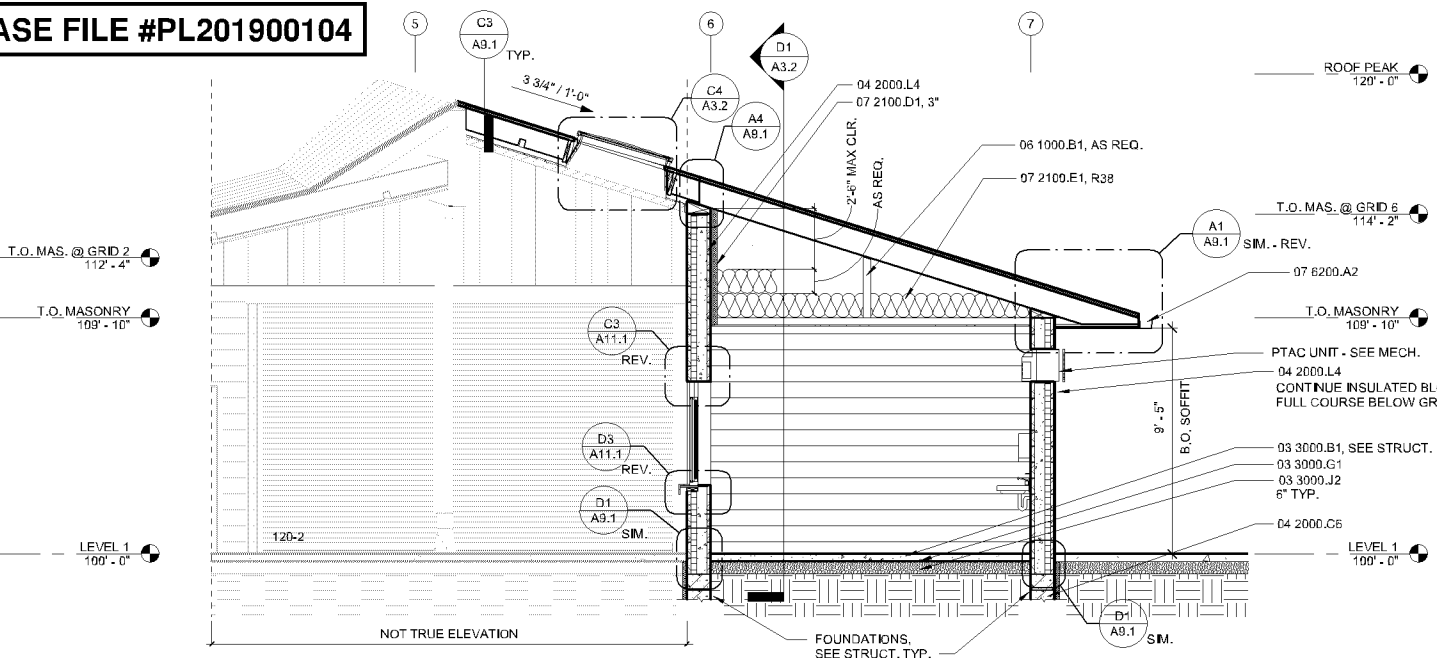
© 2019 Kodet Architectural Group, Ltd.
The above drawings, specifications and notes, design and arrangements represented are and shall remain the property of the Architect, and no part shall be copied, discussed or used in connection with any other project for which they have been prepared and developed without the written permission of the Architect. All work shall conform to the applicable codes and standards of the State of Minnesota.

A3.1
Elevations

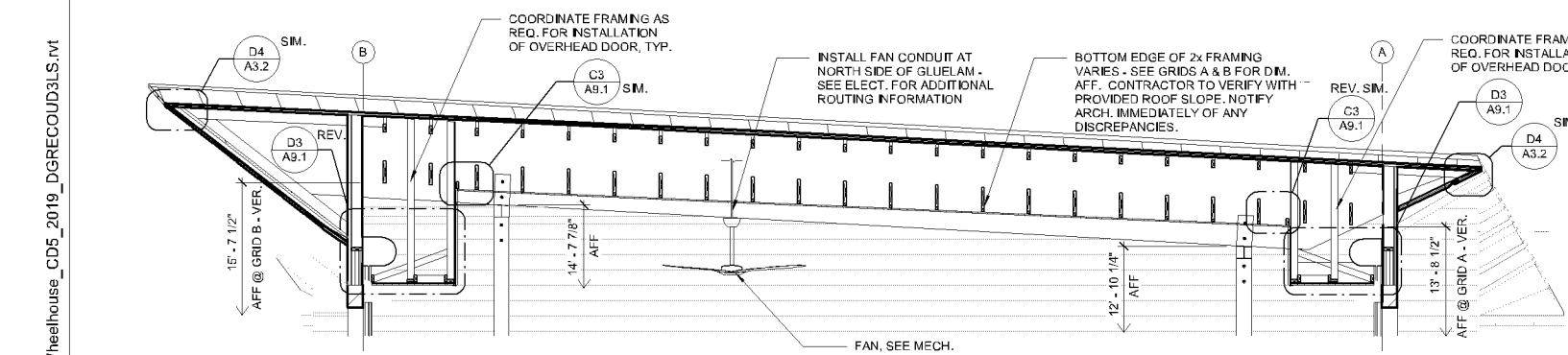
CASE FILE #PL201900104



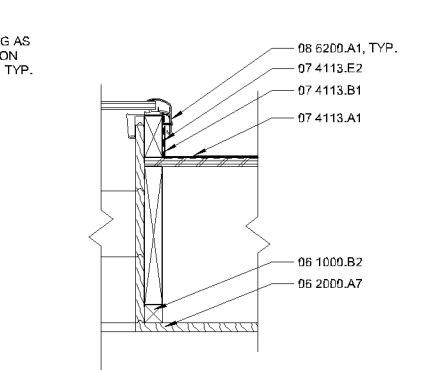
A1 N/S SECTION THROUGH RESTROOMS
A3.2 1/4" = 1'-0"



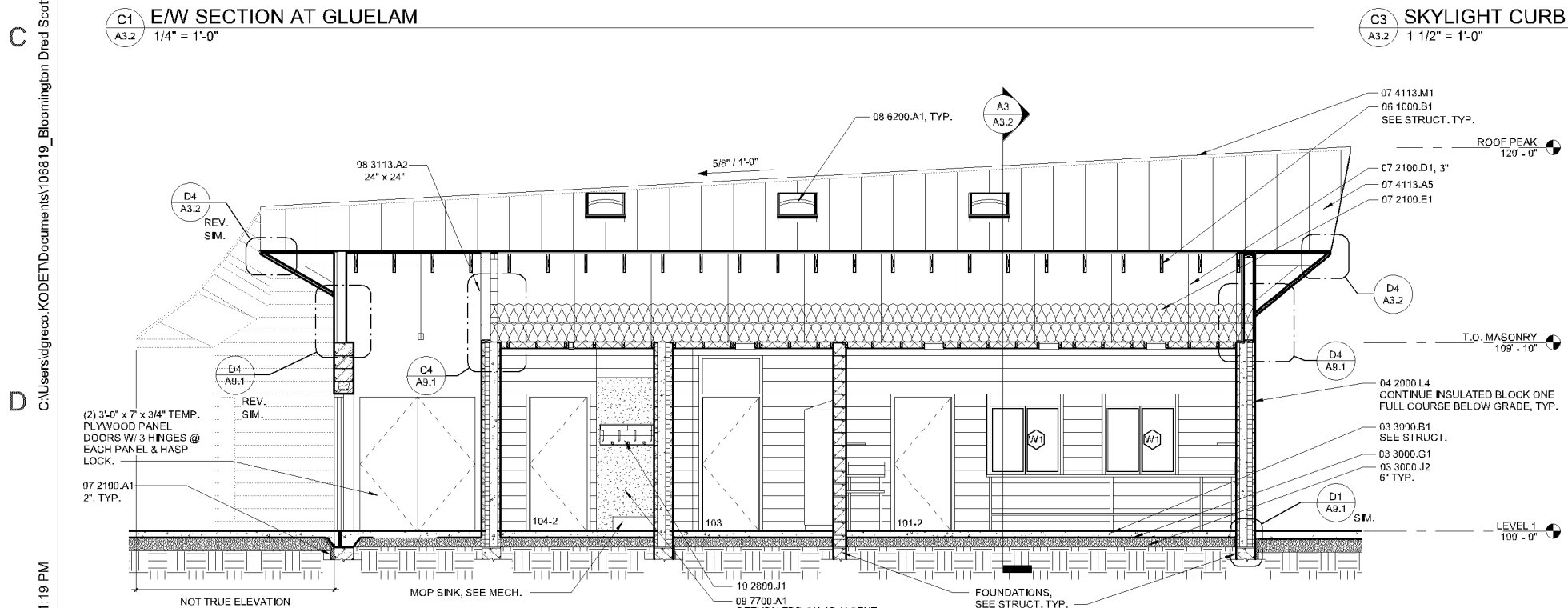
A3 N/S SECTION THROUGH LOBBY & CONCESSIONS
A3.2 1/4" = 1'-0"



C1 EW SECTION AT GLUELAM
A3.2 1/4" = 1'-0"

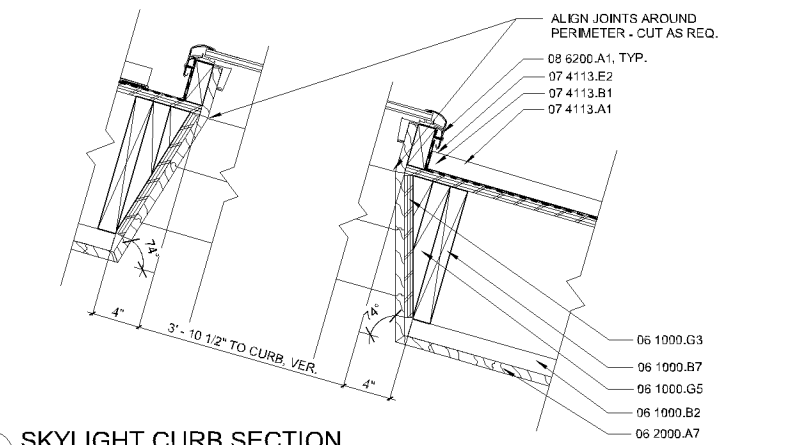


C3 SKYLIGHT CURB SECTION
A3.2 1 1/2" = 1'-0"

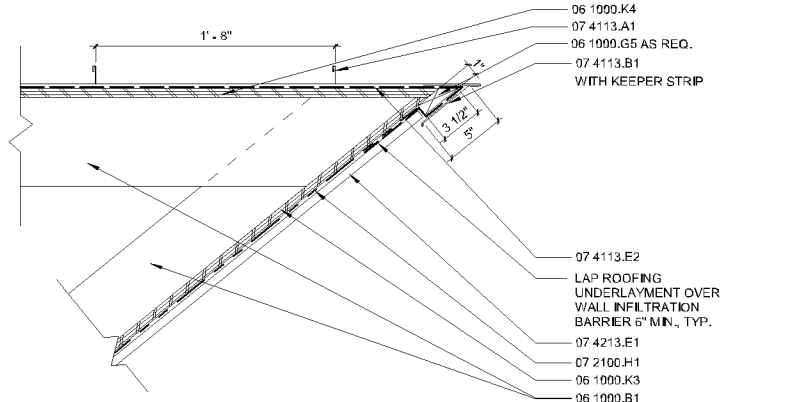


D1 EW SECTION THROUGH SUPPORT AREAS
A3.2 1/4" = 1'-0"

APPROVED ZONING REVIEW ONLY
NMJ 10/11/2019



C4 SKYLIGHT CURB SECTION
A3.2 1 1/2" = 1'-0"

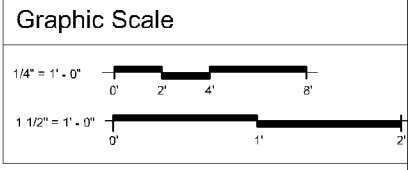


D4 ROOF RAKE SECTION AT ANGLED SOFFIT
A3.2 1 1/2" = 1'-0"

Material Keying Legend

03 3000.B1	C 1.P. Concrete Slab
03 3000.G1	Vapor Retarder
03 3000.J2	Granular Fill
04 2000.C6	12" Concrete Block
04 2000.L4	Insulated 12" Concrete Block
06 1000.B1	Wood Framing
06 1000.B2	2 x 2 Wood Framing
06 1000.B7	2 x 12 Wood Framing
06 1000.G3	Plywood Blocking
06 1000.G5	2 x Wood Blocking
06 1000.K3	5/8" Exterior Grade Plywood Sheathing
06 1000.K4	3/4" Exterior Grade Plywood Sheathing
06 2000.A7	1 x 6 Wood Trim
07 2100.A1	Extruded Polystyrene Board Insulation, Type IV (Typ. Below Grade)
07 2100.D1	Polyisocyanurate Board Insulation (Typ. Above Grade)
07 2100.E1	Glass-Fiber Insulation, Batt Form, Type I
07 2100.H1	Air Infiltration Barrier
07 4113.A1	Standing Seam Metal Panels
07 4113.A5	Metal Roof Panel
07 4113.B1	Metal Flashing
07 4113.E2	Waterproofing Underlayment
07 4113.M1	Continuous Metal Ridge Vent
07 4213.E1	Metal Soffit Panel
07 6200.A2	Metal Gutter
08 3113.A2	Wall Access Door
08 6200.A1	Plastic Unit Skylight
09 7700.A1	Fiberglass Reinforced Plastic Panels
10 2800.J1	Map and Broom Holder

- General Notes**
- PAINT ALL EXPOSED STEEL WITH EPOXY PAINT, TYP.
 - ALL EXPOSED WELDS SHALL BE CONTINUOUS, GRIND SMOOTH.



City of Bloomington
Dred Scott Wheelhouse Replacement
Bloomington, Minnesota

KODET ARCHITECTURAL GROUP
15 Groveland Terrace | Minneapolis, MN 55403-1154
612.377.2737 | www.kodet.com

Date: August 08, 2019
Project No.: 106819
Drawn By: SL
Checked By: TN

Revisions

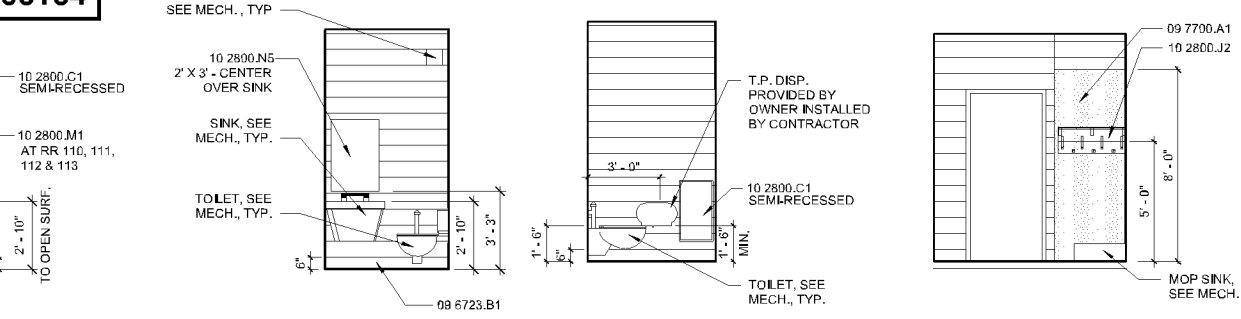
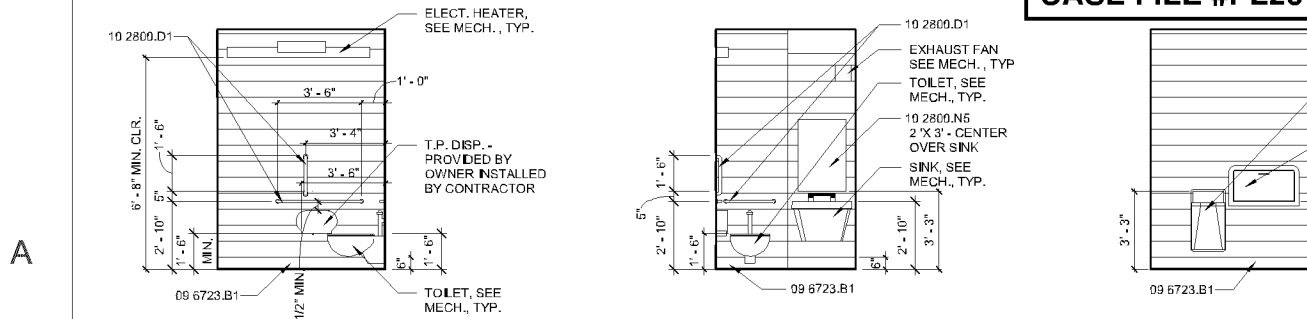
I hereby certify that this plan, specification, or report was prepared by me or under my direct supervision, and that I am a duly Licensed Architect under the laws of the State of Minnesota.
Architect: [Signature]
Date: 08/08/2019
License Number: 03091

© 2019 Kodet Architectural Group, Ltd.
The above drawings, specifications and data, design and paragraphs reproduced are and shall remain the property of the Architect, and no part shall be copied, disseminated to others, or used in connection with any other project for which they have been prepared and developed without the written permission of the Architect. We warrant that these drawings or specifications shall constitute a complete and accurate representation of the work to be performed.

A3.2
Building Sections

C:\Users\dgrego\KODET\Documents\106819_Bloomington Dred Scott Wheelhouse_CD5_2019_DGRECOUD3LS.rvt
8/8/2019 3:41:19 PM

CASE FILE #PL201900104



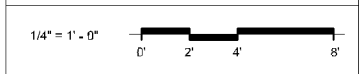
Material Keying Legend

- 04 2000.D1 Burnished Finish
- 05 4023.E1 Solid Surface Material
- 08 3000.J2 Glazed Wall Tile
- 08 6516.D1 Integral Base
- 08 6723.B1 Resinous Coated Base
- 09 7700.A1 Fiberglass Reinforced Plastic Panels
- 09 9600.A1 High Performance Paint Coatings
- 10 1400.A2 Metal Panel Sign
- 10 1426.A2 Illuminated Metal Sign
- 10 2800.C1 Waste Receptacle
- 10 2800.D1 Grab Bar
- 10 2800.F2 Soap Dish
- 10 2800.J2 Mop and Broom Holder/Utility Shelf
- 10 2800.M1 Diaper Changing Station
- 10 2800.N1 Framed Mirror Unit
- 10 2800.N5 Stainless Steel Mirror
- 10 4416.C1 Bracket Mounted Fire Extinguisher
- 10 5113.A1 Wardrobe Lockers, Single Tier
- 10 5113.A2 Wardrobe Lockers, Double Tier
- 10 5113.C2 Continuous Metal Base
- 10 5113.C3 Continuously Slipping Top
- 10 5113.C4 Finished End Panel
- 11 4000.A1 Stainless Steel Counter and Backsplash
- 11 4000.A2 Stainless Steel Sink
- 11 4000.B1 Stainless Steel Wall Shelf

General Notes

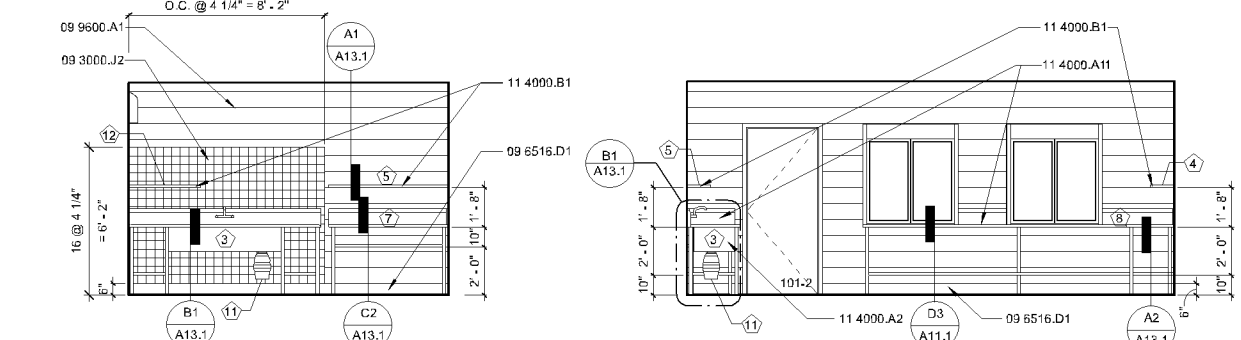
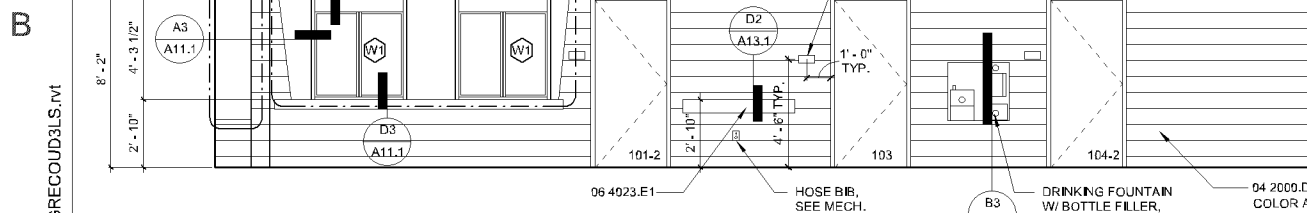
1. THERE MAY BE UP TO 1 FIELD AND 2 ACCENT WALL PAINT COLORS IN BUILDING. PAINT INTERIOR PARTITION/WALL SURFACES AT RESTROOMS, CONCESSIONS & UMPIRE W/ HIGH PERFORMANCE COATING.

Graphic Scale



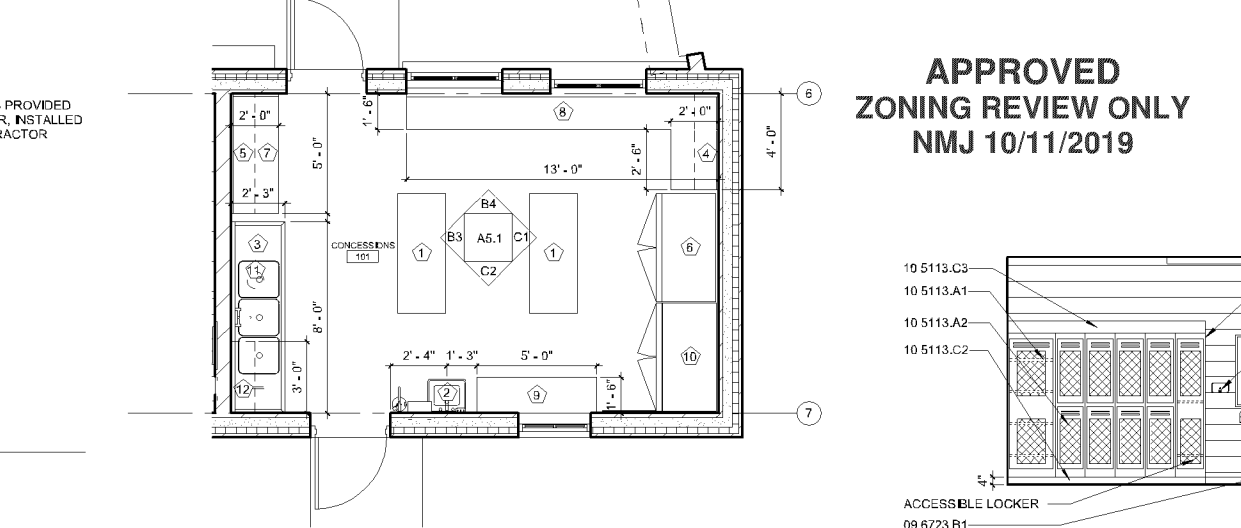
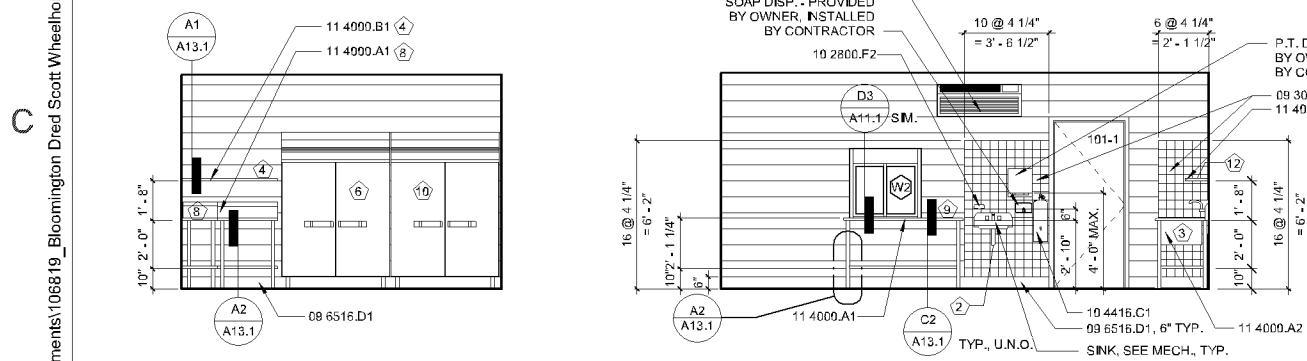
APPROVED ZONING REVIEW ONLY
NMJ 10/11/2019

A1 FAM. ACC. RR 110 & 112 W. ELEV. (RR 111 & 113 E. ELEV.) 1/4" = 1'-0"
A2 FAM. ACC. RR N. ELEV. 1/4" = 1'-0"
A3 FAM. ACC. RR 110 & 112 E. ELEV. (RR 111 & 113 W. ELEV.) 1/4" = 1'-0"
A4 TYP. RR N. ELEV. 1/4" = 1'-0"
A5 TYP. RR E. ELEV. 1/4" = 1'-0"
A6 MECH. / UTILITY N. ELEV. 1/4" = 1'-0"



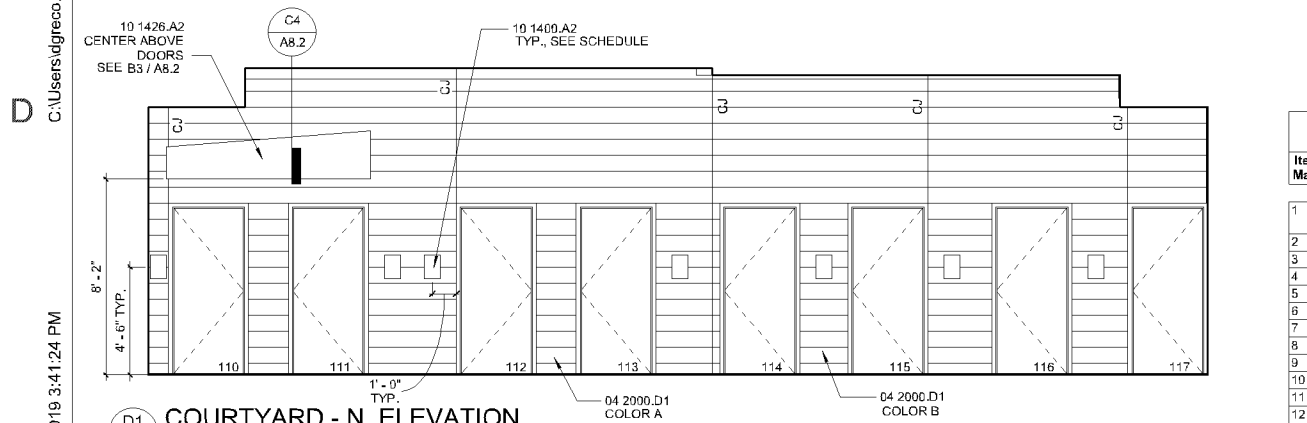
B1 COURTYARD - S. ELEVATION 1/4" = 1'-0"

B3 CONFESSIONS / FOOD SALES - W ELEV. 1/4" = 1'-0"
B4 CONFESSIONS - N. ELEVATION 1/4" = 1'-0"



C1 CONFESSIONS - E. ELEVATION 1/4" = 1'-0"
C2 CONFESSIONS - S ELEVATION 1/4" = 1'-0"

C3 KITCHEN EQUIPMENT PLAN 1/4" = 1'-0"
C4 UMPIRE E. ELEVATION 1/4" = 1'-0"



D1 COURTYARD - N. ELEVATION 1/4" = 1'-0"

Item Mark	Description	Qty.	Manufacturer	Power to Each Unit (Ver. w/Elect.)	Water (Ver. w/ Mech.)	Remarks
1	S. ST. PREP TABLE; 2'-0"W x 5'-0"L x 3'-0"H	2	CUSTOM	-	-	S. ST. COUNTER W/ UNDERSHELF & UTENSIL DRAWER, 4 LOCKING CASTERS, SOUND DEADENING
2	HANDWASHING SINK, 18"	1	SEE MECH.	-	H/C	SEE MECH.
3	S. ST 3 COMP. SINK (36"W x 27"D) W/ DRAINBOARDS BOTH ENDS	1	CUSTOM	-	H/C	MARINE EDGES, ST. SEE B1/A13.1
4	S. ST. SHELF; 1'-0" DEEP	1	CUSTOM	-	-	S. ST. BODY, SEE A1/A13.1
5	S. ST. SHELF; 1'-0" DEEP	1	CUSTOM	-	-	S. ST. BODY, SEE A1/A13.1
6	T-49G-HC-FGD01, REACH-IN REFRIGERATOR, 54 1/4"W x 29 7/8"D x 78 3/8"H	1	TRUE MANUFACTURING CO.	115V,60HZ,1PH,11.0 AMPS	-	S. ST. FRONT W/ THERMAL GL. ALUM. HANDLE, 2 DR W/ CASTERS & 3 SHELVES
7	S. ST. COUNTER W/ BACKSPASH	1	CUSTOM	-	-	S. ST. BODY & LEGS, UNDERSHELF, SOUND DEADENING
8	S. ST. COUNTER & BACKSPASH & SIDESPLASH	1	CUSTOM	-	-	S. ST. BODY, OPEN BELOW, UNDERSHELF, SOUND DEADENING
9	S. ST. SERVING COUNTER & BACKSPASH	1	CUSTOM	-	-	S. ST. BODY & LEGS, UNDERSHELF, SOUND DEADENING
10	T-49FG-HC-FGD01, REACH-IN FREEZER, 54 1/8"W x 29 3/4"D x 78 3/8"H	1	TRUE MANUFACTURING CO.	115V,60HZ,1PH,11.0 AMPS	-	S. ST. FRONT W/ THERMAL GL. ALUM. HANDLE, 2 DR W/ CASTERS & 3 SHELVES
11	KCDS075T, 3/4-HORSEPOWER CONTINUOUS FEED GARBAGE DISPOSAL, 1725 RPMs	1	KITCHENAID	115V, 60HZ	-	40 OZ CAPACITY
12	S. ST. SHELF; 1'-0" DEEP	1	CUSTOM	-	-	S. ST. BODY, SEE A1/A13.1

C:\Users\jgrec\Documents\106819_Bloomington Dred Scott Wheelhouse_CD5_2019_DGRECOUD3LS.rvt
 8/8/2019 3:41:24 PM

Date: August 08, 2019
 Project No.: 106819
 Drawn By: EK
 Checked By: TN
 Revisions:
 KODET ARCHITECTURAL GROUP
 15 Crowland Terrace | Minneapolis, MN 55403-1154
 612.377.2737 | www.kodet.com
 City of Bloomington
 Dred Scott Wheelhouse Replacement
 Bloomington, Minnesota
 © 2019 Kodet Architectural Group, Ltd.
 The above drawings, specifications and data, design and arrangements represented hereon and shall remain the property of the Architect, and no part shall be copied, duplicated or disseminated to others, or used in connection with any other project for which they have been prepared and developed without the written permission of the Architect. We warrant correct with these drawings or specifications shall constitute complete evidence of these matters.
 I hereby certify that this plan, specification or report was prepared by me or under my direct supervision, and that any other Licensed Architect under the laws of the State of Minnesota, who has assisted in the preparation of this plan, specification or report, is duly Licensed under the laws of the State of Minnesota.
 Date: 08/08/2019
 Architect: [Signature]
 License Number: 03201

