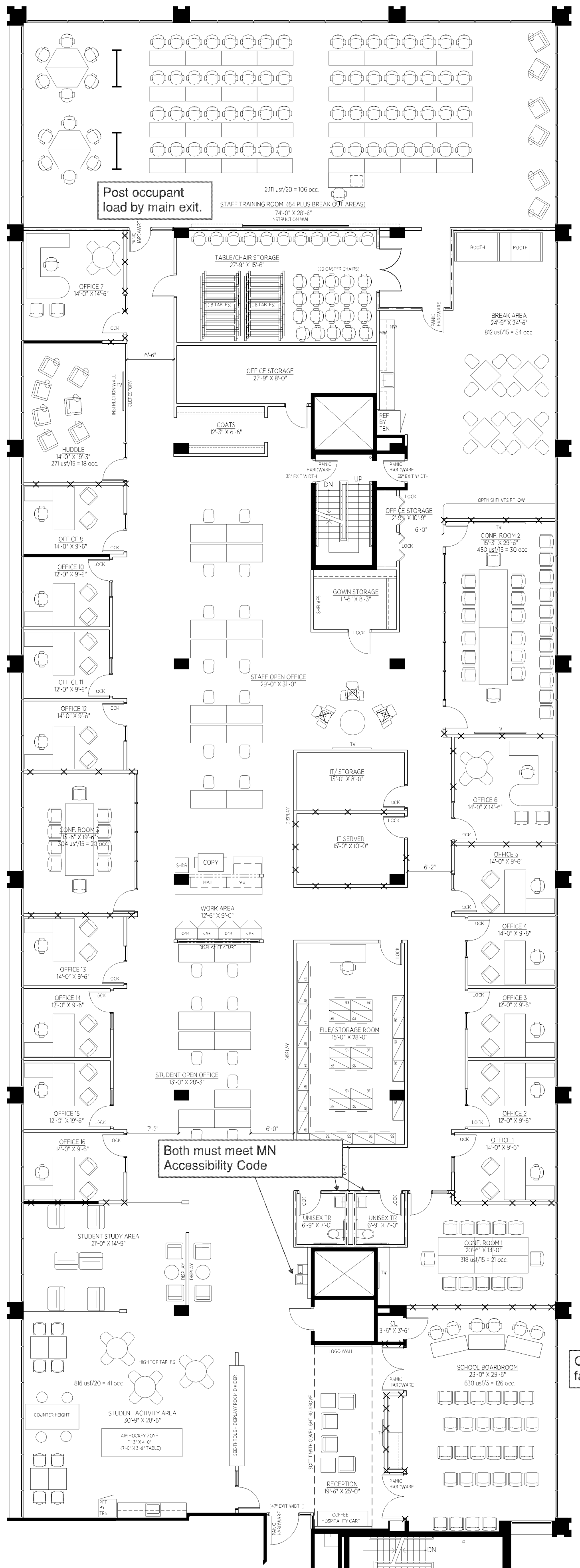


1 DEMOLITION PLAN
SP



SAC review by MET council will be required.

Must meet current MN State Building Code



2 SPACE PLAN
SP



Space required to be fully sprinklered.

Space may require a fire alarm system depending on occupancy classification.

PL2019-201
PL201-00201

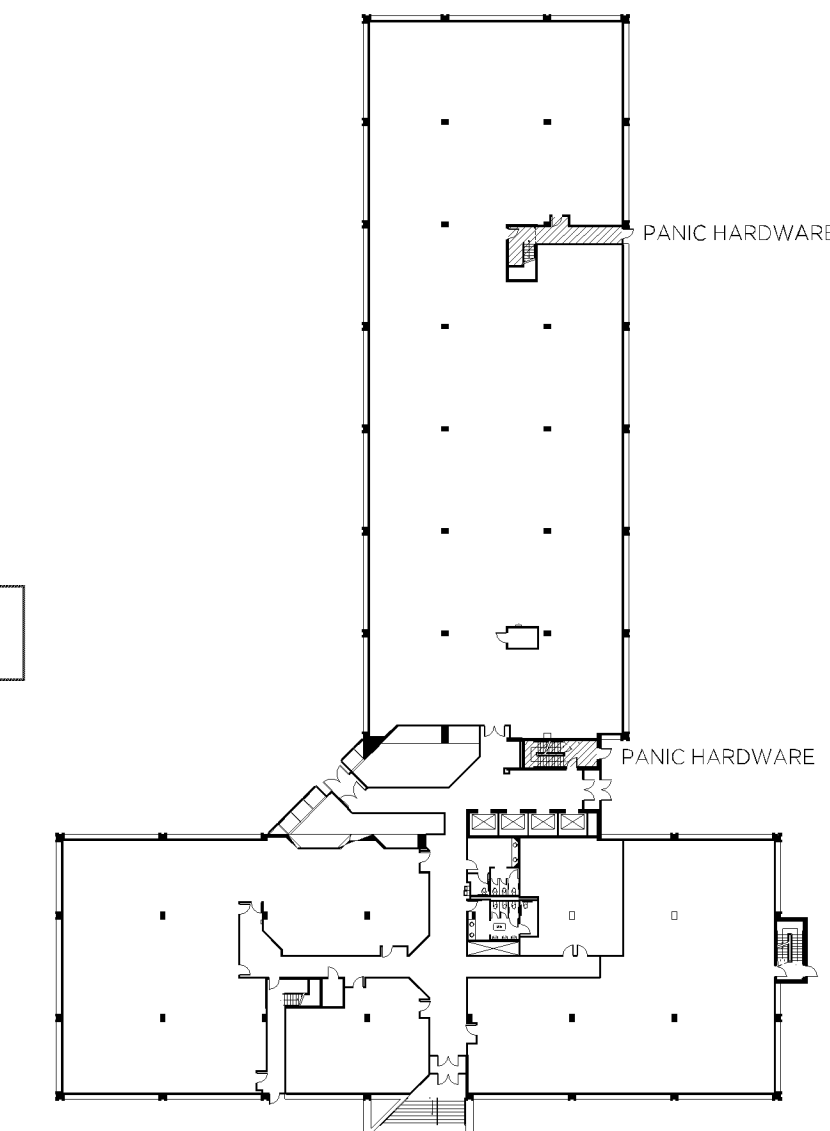
WALL SYMBOLS KEY

- EXISTING CONSTRUCTION TO REMAIN
- EXISTING CONSTRUCTION TO BE DEMOLISHED
- EXISTING PARTITION TO BE EXTENDED TO DECK AND SOUND INSULATED
- NEW BUILDING STANDARD DEMISING PARTITION: 1.5" STEEL STUDS SPACED 24" O.C. TO UNDERFLOOR OF DECK, 5/8" GYPSUM BOARD, TAPED AND SANDED BOTH SIDES, FULL BATT INSULATION IN WALL CAVITY
- NEW INTERIOR PARTITION: 1.5" STEEL STUDS SPACED 24" O.C. TO ACoustICAL CEILING, 5/8" GYPSUM BOARD, TAPED AND SANDED BOTH SIDES
- NEW INTERIOR PARTITION WITH INSULATION: 1.5" STEEL STUDS SPACED 24" O.C. TO UNDERFLOOR OF ACoustICAL CEILING, 5/8" GYPSUM BOARD, TAPED AND SANDED BOTH SIDES, FULL BATT INSULATION IN WALL CAVITY AND 4" OF WIDE BATT INSULATION OVER WALL IN VOID
- NEW INTERIOR PARTITION, PARTIAL HEIGHT: 1.5" STEEL STUDS SPACED 24" O.C. TO 60" FINISHED HEIGHT, 5/8" GYPSUM BOARD, TAPED AND SANDED BOTH SIDES, P. LAM/ WOOD TOP CAP, ATTACHED TO DECK AT END OF WALL
- NEW INTERIOR PARTITION, PARTIAL HEIGHT: 1.5" STEEL STUDS SPACED 24" O.C. TO 60" FINISHED HEIGHT, 5/8" GYPSUM BOARD, TAPED AND SANDED BOTH SIDES, P. LAM/ WOOD TOP CAP WITH FINISHED SPRING TO ACoustICAL CEILING ABOVE, ATTACHED TO DECK AT END OF WALL
- NEW FULL HEIGHT FRAMED GLASS PARTITION: CLEAR TEMPERED/ LAMINATED SAFETY GLASS IN HOLLOW METAL FRAME TO MATCH BUILDING STANDARD DOOR FRAME
- NEW BUTT GLASS PARTITION: CLEAR TEMPERED/ LAMINATED SAFETY GLASS IN GLAZING CHANNEL WITH CLEAR SILICONE GASKETS

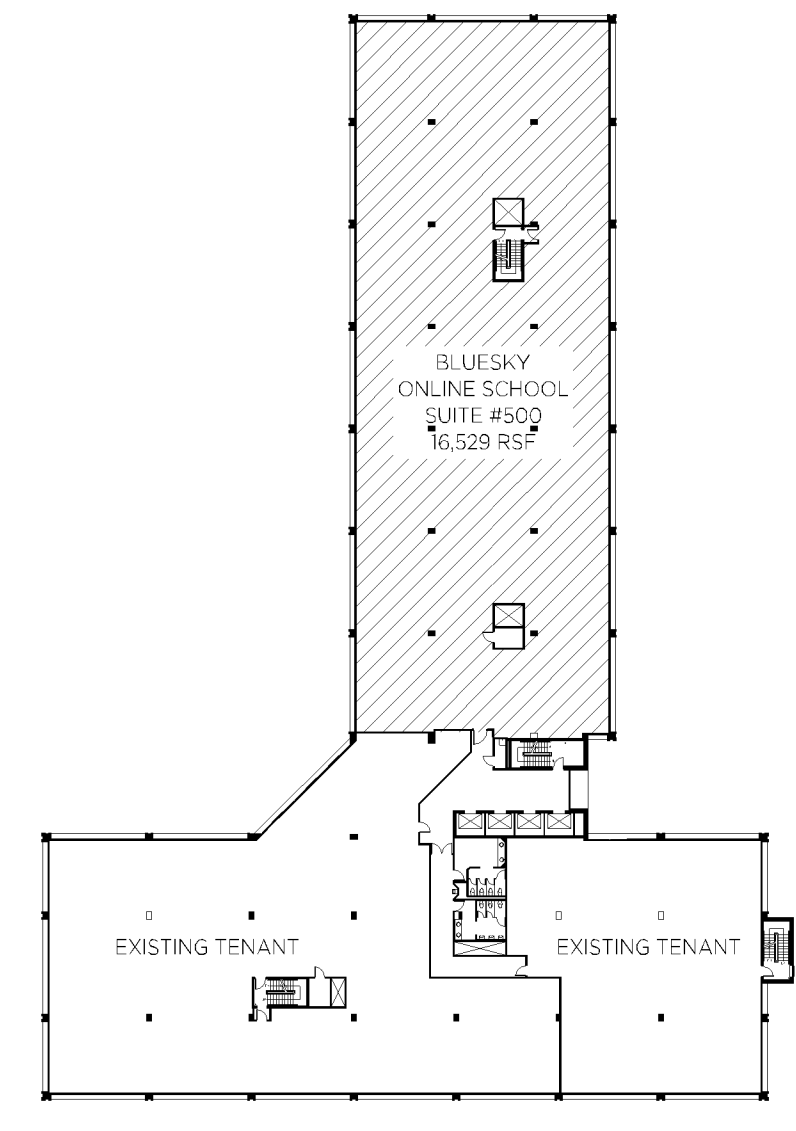
VERIFY APPROPRIATE FIRE RATING OF ALL SHAFTS THROUGH FLOOR/ CEILING AND ROOF/ CEILING ASSEMBLIES: FOUR STORIES OR MORE: 2-HOUR RATED ASSEMBLY

USE WATER RESISTANT GYPSUM BOARD FOR ALL WALLS AND CHASES CONTAINING PLUMBING.

- NOTES:
- ROOM DIMENSIONS SHOWN ARE APPROXIMATE.
 - ALL FREESTANDING FURNITURE SHOWN IS PROVIDED BY TENANT.
 - THIS PLAN IS FOR LAYOUT PURPOSES ONLY, NOT FOR CONSTRUCTION.
 - FULLY SPRINKLERED BUILDING.
 - PANIC HARDWARE EXTENDING AT LEAST ONE-HALF OF THE DOOR WIDTH IS REQUIRED IN ALL SPACES WITH AN OCCUPANT LOAD OF 50 OR MORE, AND AT THE ACCESS AND EXIT DOORS OF STAIRS A AND B.
 - ALL OCCUPANTS OF THE FLOOR MUST HAVE ACCESS TO TWO EXIT STAIRS.



3 LOCATION KEY (NEW PANIC HARDWARE)
SP FIRST FLOOR N.T.S.



4 LOCATION KEY
SP FIFTH FLOOR N.T.S.

REVISIONS DATE

SOUTH LOOP OFFICE CENTER

PROJECT NAME
BLUESKY ONLINE SCHOOL
SOUTH LOOP OFFICE CENTER
2051 KILLEBREW DRIVE
FIFTH FLOOR, SUITE #500
BLOOMINGTON, MN 55425

DRAWING TITLE
DEMOLITION PLAN
SPACE PLAN

DATE 09/09/19
DRAWN BY SPM
APPROVED BY ML
SCALE 3/32" = 1'-0"
SHEET SP
OF 1 SHEET(S)

archimea
Interior Design Services, Inc.
3001 Meno Drive, Suite 450, Bloomington, MN 55425 952-854-5254

HEREBY CERTIFY THAT THIS PLAN, SPECIFICATION, OR REPORT WAS PREPARED BY ME OR UNDER MY DIRECT SUPERVISION AND THAT I AM A DULY LICENSED INTERIOR DESIGNER UNDER THE LAWS OF THE STATE OF MINNESOTA.

DATE: REG. NO.: C00754