

20 03-027-24 22 0016
VECTOR ENGINEERING CO
331 LAKE HAZELTINE DR
CHASKA MN 55318

20 04-027-24 11 0030
STUART CORP
1000 80TH ST W
BLOOMINGTON MN 55420

20 04-027-24 13 0001
GARY E ZYWOTKO
1101 W 80TH ST
BLOOMINGTON MN 55420

20 03-027-24 22 0019
KEATS BLOOMINGTON LLC
C/O BENJAMIN B SMITH
6408 OXBOW BEND
CHANHASSEN MN 55317

20 04-027-24 11 0031
FREEDOM 50 HOLDINGS LLC
900 80TH ST W
BLOOMINGTON MN 55420

20 04-027-24 13 0052
GNMN002 LLC
8001 BLOOMINGTON FREEWAY
BLOOMINGTON MN 55420

20 03-027-24 22 0041
SOO LINE RAILROAD COMPANY
120 S. 6TH STREET 700
MINNEAPOLIS MN 55402

20 04-027-24 11 0032
RECREATIONAL EQUIPMENT INC
P O BOX 1938
SUMNER WA 98390

20 04-027-24 14 0017
LUX PROPERTIES LLC
C/O LES JONES ROOFING INC
941 80TH ST W
BLOOMINGTON MN 55420

20 03-027-24 22 0042
HOME DEPOT U S A INC
PROPERTY TAX DEPT RE 2805
P O BOX 105842
ATLANTA GA 30348-5842

20 04-027-24 11 0033
TOPLINE FEDERAL CREDIT UNION
9353 JEFFERSON HWY N
MAPLE GROVE MN 55369

20 04-027-24 14 0018
LEGEND PROPERTY MNGMT LLC
1031 WEST 80TH ST
BLOOMINGTON MN 55420

20 03-027-24 22 0043
HOME DEPOT U S A INC
PROPERTY TAX DEPT RE 2805
P O BOX 105842
ATLANTA GA 30348-5842

20 04-027-24 11 0034
CITY OF BLOOMINGTON
1800 OLD SHAKOPEE RD W
BLOOMINGTON MN 55431

20 04-027-24 14 0019
LEGEND PROPERTY MNGMT LLC
1031 WEST 80TH ST
BLOOMINGTON MN 55420

20 03-027-24 22 0046
BUDGET TRUCK RENTAL LLC
ATTN BRIDGET CAMPBELL
2211 YORK ROAD 222
OAK BROOK IL 60523

20 04-027-24 11 0035
CHRISTY L C THIELE LLC
5524 CODE AVE
EDINA MN 55436

20 04-027-24 14 0020
LEGEND PROPERTY MNGMT LLC
1031 WEST 80TH ST
BLOOMINGTON MN 55420

20 03-027-24 22 0047
THE LUTHER COMPANY LLLP
3701 ALABAMA AVE S
SAINT LOUIS PARK MN 55416

20 04-027-24 12 0002
MARIAN COUNCIL HOME ASSN
1114 W 79TH ST
MPLS MN 55420

20 04-027-24 14 0021
JAMES A HUDSON
1460 SIBLEY MEMORIAL HWY
MENDOTA HEIGHTS MN 55120

20 03-027-24 23 0074
THE TORO COMPANY
8111 LYNDALE AVE S
BLOOMINGTON MN 55420

20 04-027-24 12 0021
MARIAN COUNCIL HOME
1114 W 79TH ST
MPLS MN 55420

42 33-028-24 44 0231
CSM CORPORATION
500 WASHINGTON AVE S #3000
MINNEAPOLIS MN 55415

20 04-027-24 11 0022
BLOOM LINCOLN MERCURY RE LLC
1001 CLOVER DR
BLOOMINGTON MN 55420

20 04-027-24 12 0028
ROGER LINDEMAN
6934 EDGE BROOK PL
EDEN PRAIRIE MN 55346

42 33-028-24 44 0232
CSM SHOPS INC
500 WASHINGTON AVE S #3000
MINNEAPOLIS MN 55415

20 04-027-24 11 0024
BRE/ESA PROPERTIES
11525 N COMMUNITY HOUSE RD
P O BOX 49550 PROP TAX 0733
CHARLOTTE NC 28277

20 04-027-24 12 0032
HOM FURNITURE INC
10301 WOODCREST DR NW
COON RAPIDS MN 55433

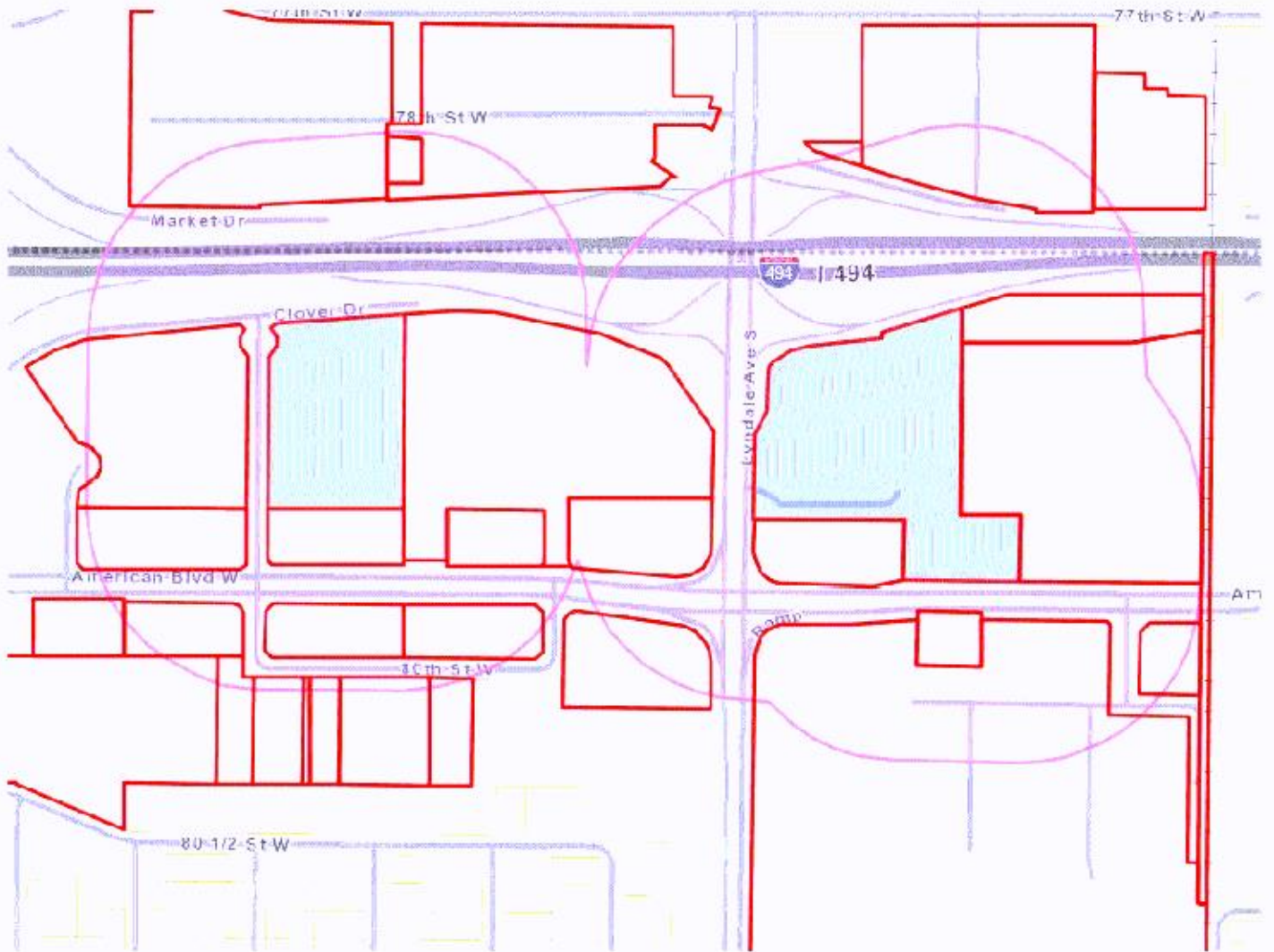
42 33-028-24 44 0235
CSM SHOPS INC
500 WASHINGTON AVE S #3000
MINNEAPOLIS MN 55415

42 34-028-24 33 0082
MOA HOSPITALITY GROUP LLC
ATTN: CHIEF MANAGER
1920 SOUTH 1ST STREET #904
MINNEAPOLIS MN 55454

42 34-028-24 33 0088
THOMSON REUTERS PROP TX SER
C/O RYAN
150 SOUTH FIFTH ST STE #2500
MINNEAPOLIS MN 55402

42 34-028-24 33 0156
JIW INC
501 W 77TH ST
RICHFIELD MN 55423

City of Bloomington Notification Map



Case PL2020-7

Addresses: 7801 Lyndale Avenue, 511 and 515 West 78th Street, 500 American Boulevard West, and 1001 Clover Drive

-  Notification Boundary (500 feet)
-  Subject Property/Properties
-  Notified Properties

