

# UTILITY EASEMENT VACATION EXHIBIT

PL201900212  
PL2019-212

FOR: BLOOMINGTON ACURA

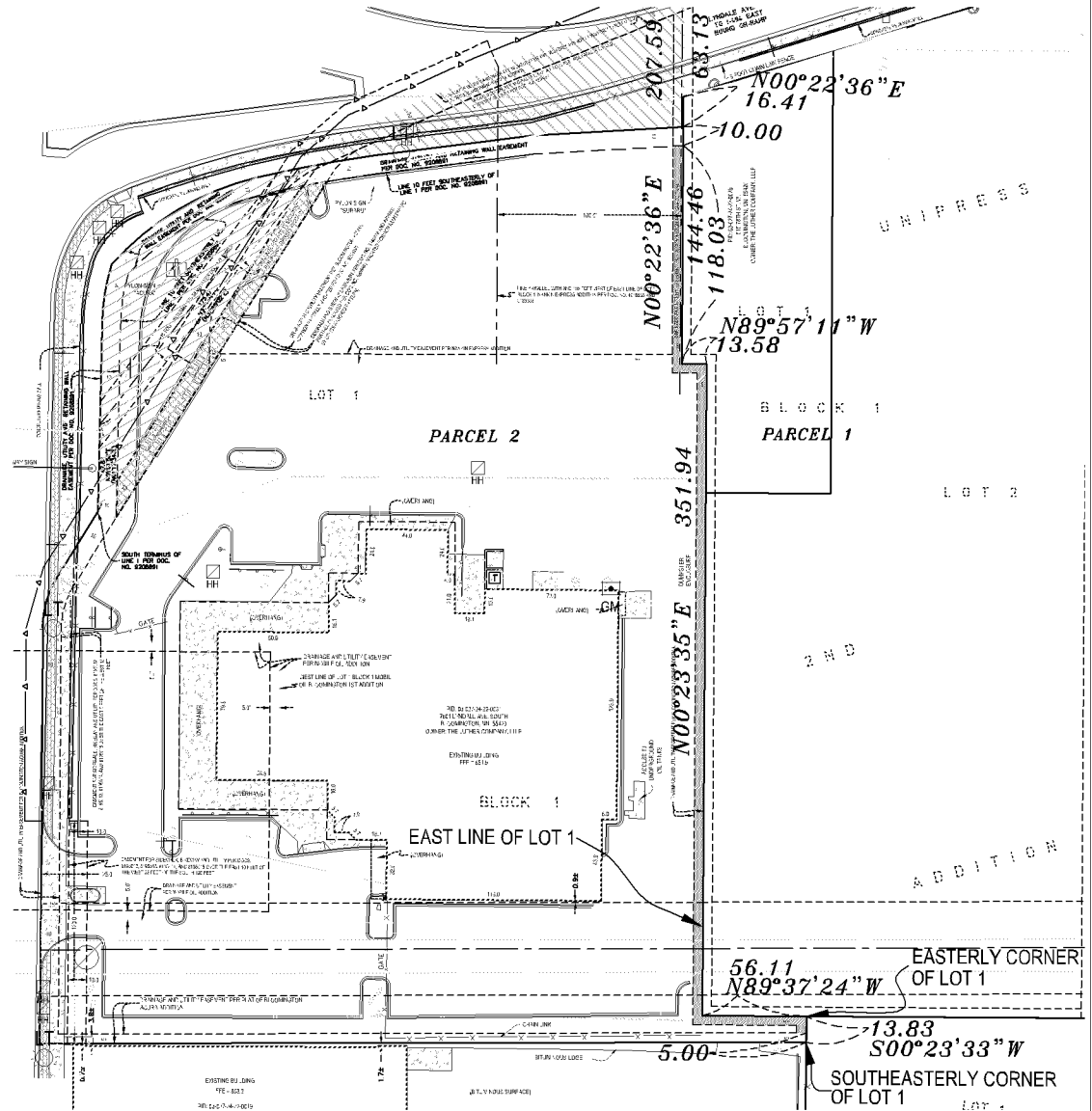
## LEGAL DESCRIPTION

Lot 1, Block 1, BLOOMINGTON ACURA ADDITION, Hennepin County, Minnesota.


## DESCRIPTION OF EASEMENT TO BE VACATED

That part of the drainage and utility easement lying within Lot 1, Block 1, BLOOMINGTON ACURA ADDITION, Hennepin County, Minnesota as dedicated in said plat, which is 5.00 feet in width and lies to the left of the following described line:

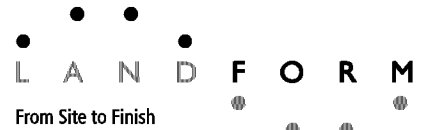
Commencing at the Southeasterly property corner of Lot 1, Block 1, BLOOMINGTON ACURA ADDITION; thence North 00 degrees 23 minutes 33 seconds East, along the East line of said Lot 1 a distance of 5.00 feet to the Point of Beginning; thence continue North 00 degrees 23 minutes 33 seconds East, plat bearing, along said East line of said Lot 1 a distance of 8.83 feet, to the Easterly corner of said Lot 1; thence North 89 degrees 37 minutes 24 seconds West in a westerly direction along the boundary line of said Lot 1, a distance of 56.11 feet; thence North 00 degrees 23 minutes 35 seconds East along the East line of said Lot 1 a distance of 351.94; thence North 89 degrees 57 minutes 11 seconds West along the boundary line of said Lot 1 a distance of 13.58 feet; thence North 00 degrees 22 minutes 36 seconds East along the East line of said Lot 1 a distance of 118.03 feet to the Point of Termination. Easement to be vacated from a line extending S 89 degrees 53 minutes 08 seconds West from the Point of Beginning to a line extending S 86 degrees 38 minutes 11 seconds West from the Point of Termination. The sideline of said easement to be vacated are to be shortened or extended to form angle points.



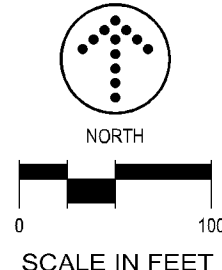
## LEGEND

 : DENOTES PORTION OF EASEMENT TO BE VACATED

Landform<sup>SM</sup> and Site to Finish<sup>SM</sup> are service marks of Landform Professional Services, LLC.

  
 From Site to Finish

105 South Fifth Avenue  
 Suite 513  
 Minneapolis, MN 55401  
 Web: landform.net



© LANDFORM 2019

# UTILITY EASEMENT VACATION EXHIBIT

PL201900212  
PL2019-212

FOR: BLOOMINGTON ACURA

## LEGAL DESCRIPTION

Lot 1, Block 1, NANKIN EXPRESS ADDITION, Hennepin County, Minnesota.

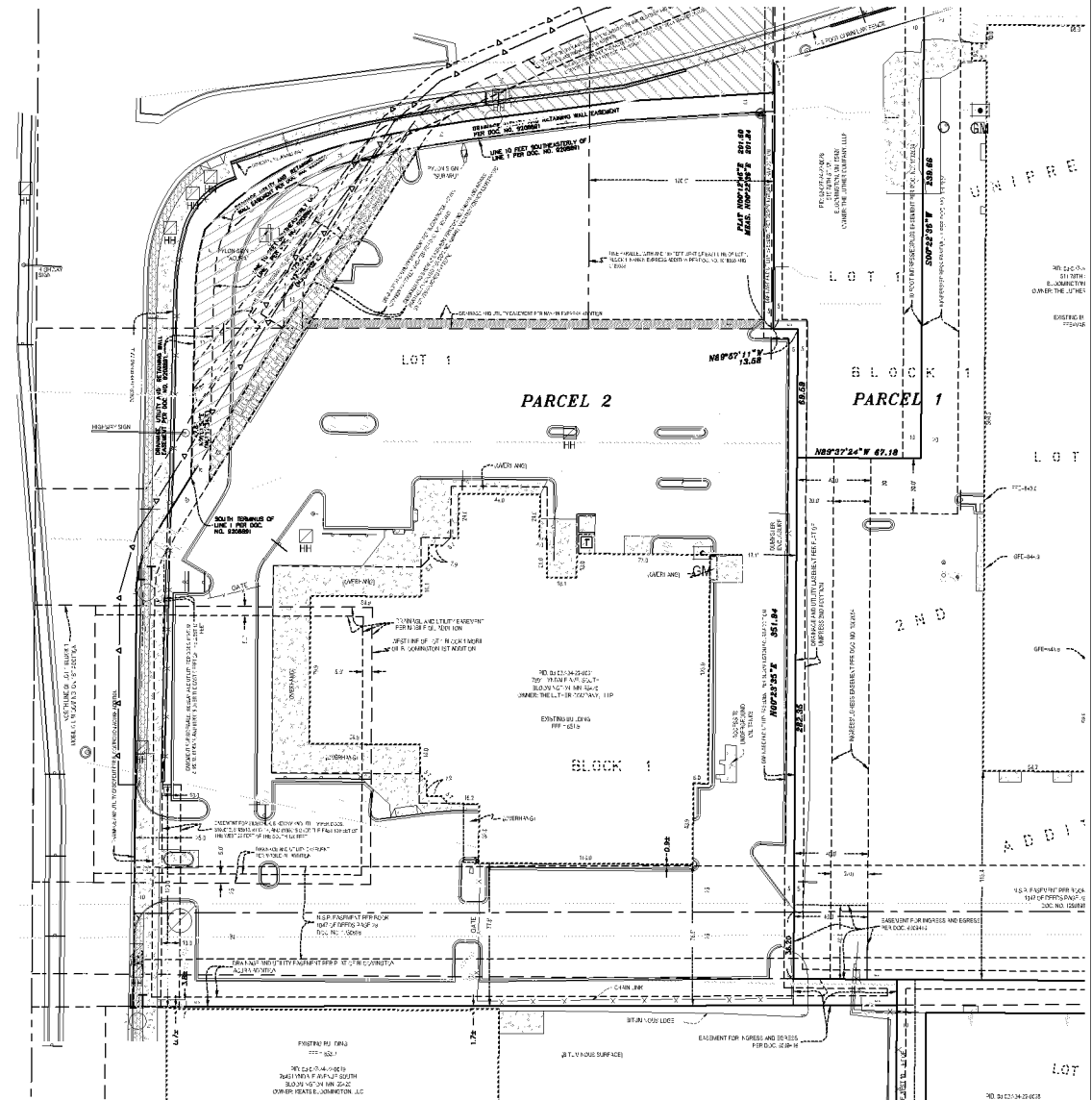
## DESCRIPTION OF EASEMENT TO BE VACATED

That part of the drainage and utility easement described in Lot 1, Block 1, NANKIN EXPRESS ADDITION, Hennepin County, Minnesota as dedicated in said plat, described as follows:

The South 5.00 feet of Lot 1, Block 1, NANKIN EXPRESS ADDITION, which lies East of the West 10.00 feet and West of the East 5.00 feet of said Lot 1.

## LEGEND

 : DENOTES PORTION OF EASEMENT TO BE VACATED



Landform<sup>SM</sup> and Site to Finish<sup>SM</sup> are service marks of Landform Professional Services, LLC.

LANDFORM  
From Site to Finish

105 South Fifth Avenue  
Suite 513  
Minneapolis, MN 55401  
Web: landform.net



NORTH



SCALE IN FEET

# UTILITY EASEMENT VACATION EXHIBIT

PL201900212  
PL2019-212

FOR: BLOOMINGTON ACURA

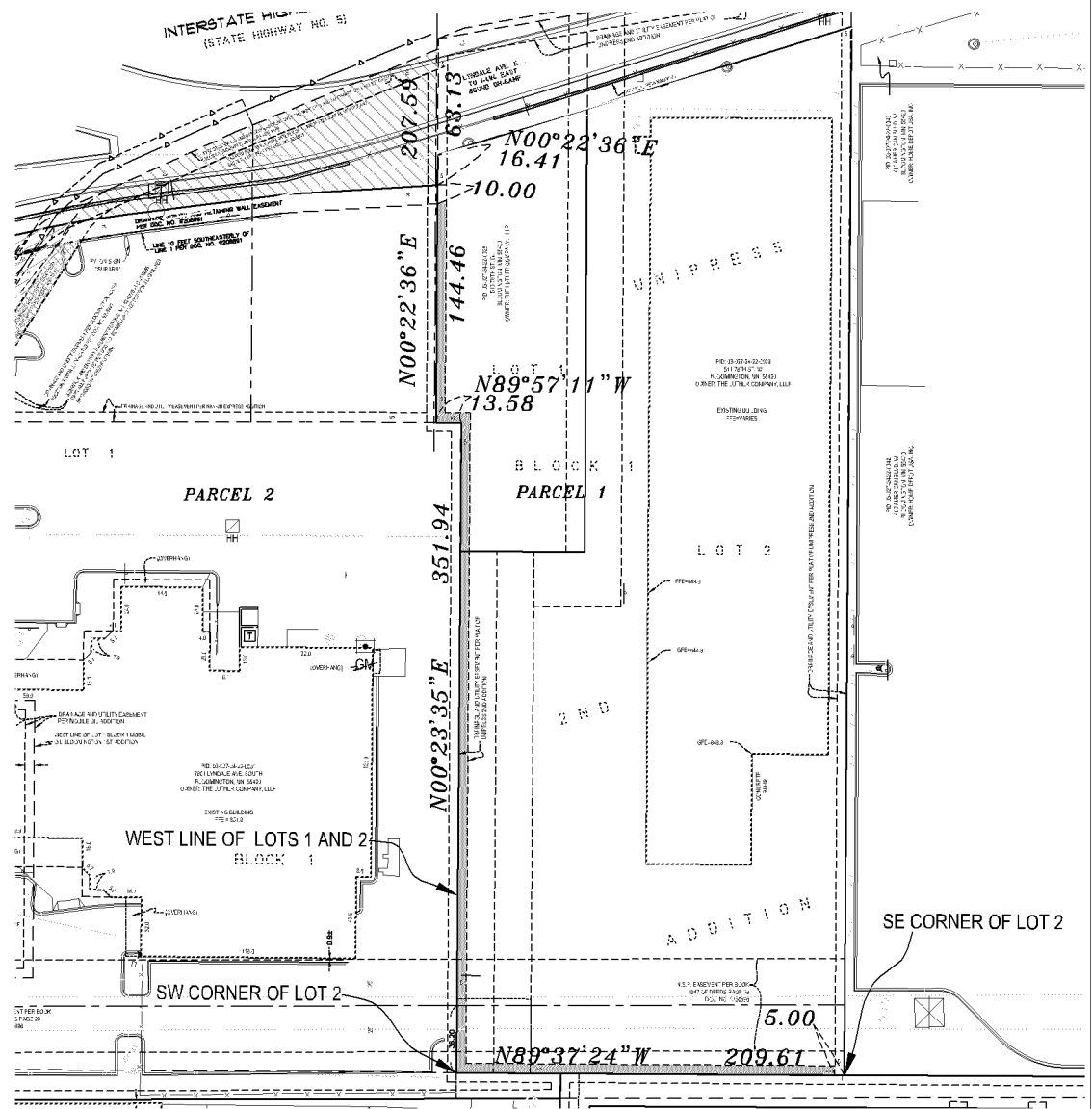
## LEGAL DESCRIPTION

Lots 1 and 2, Block 1, UNIPRESS 2ND ADDITION, Hennepin County, Minnesota.

## DESCRIPTION OF EASEMENT TO BE VACATED

That part of the drainage and utility easement lying within Lots 1 and 2, Block 1, UNIPRESS 2ND ADDITION, Hennepin County, Minnesota as dedicated in said plat, which is 5.00 feet in width and lies to the right of the following described line:

Commencing at the Southeast property corner of Lot 2, Block 1, UNIPRESS 2ND ADDITION; thence North 89 degrees 37 minutes 24 seconds West, along the South line of said Lot 2 a distance of 5.00 feet to the Point of Beginning; thence continue North 89 degrees 37 minutes 24 seconds West, plat bearing, along said South line of said Lot 2 a distance of 204.61 feet, to the Southwest corner of said Lot 2; thence North 00 degrees 23 minutes 35 seconds East along the West line of said Lot 2 and Lot 1, Block 1, UNIPRESS 2ND ADDITION, a distance of 351.94 feet; thence North 89 degrees 57 minutes 11 seconds West in a westerly direction along the boundary line of said Lot 1 a distance of 13.58 feet; thence North 00 degrees 22 minutes 36 seconds East along the West line of said Lot 1 a distance of 118.03 feet to the Point of Termination. Easement to be vacated from a line extending N 00 degrees 22 minutes 36 seconds East from the Point of Beginning to a line extending N 86 degrees 38 minutes 11 seconds East from the Point of Termination. The sideline of said easement to be vacated are to be shortened or extended to form angle points.

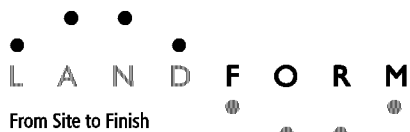


## LEGEND

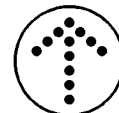
 : DENOTES PORTION OF EASEMENT TO BE VACATED

Landform<sup>SM</sup> and Site to Finish<sup>SM</sup> are service marks of Landform Professional Services, LLC.

© LANDFORM 2019



105 South Fifth Avenue  
Suite 513  
Minneapolis, MN 55401  
Web: [landform.net](http://landform.net)



NORTH



SCALE IN FEET

Job No. BAA14041 Drawing: BAA14041 EASMT EXH. By: GMH