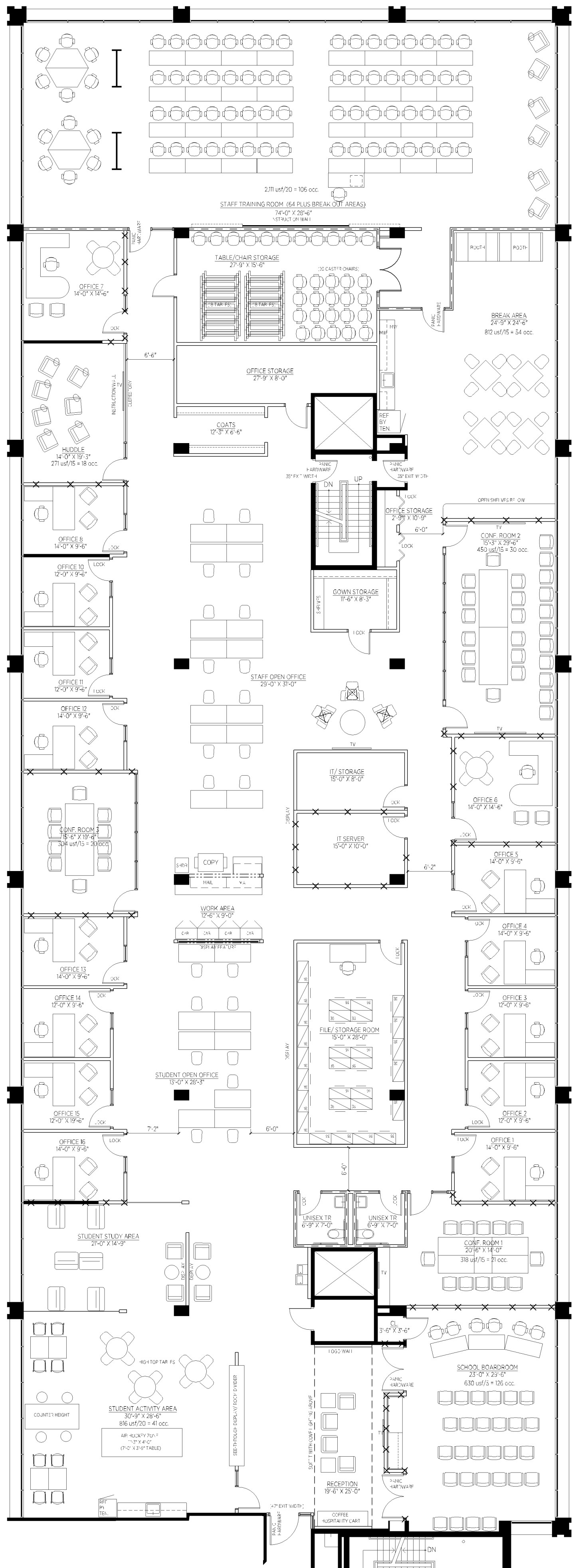
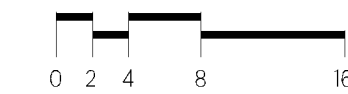


1 DEMOLITION PLAN  
SP



2 SPACE PLAN  
SP

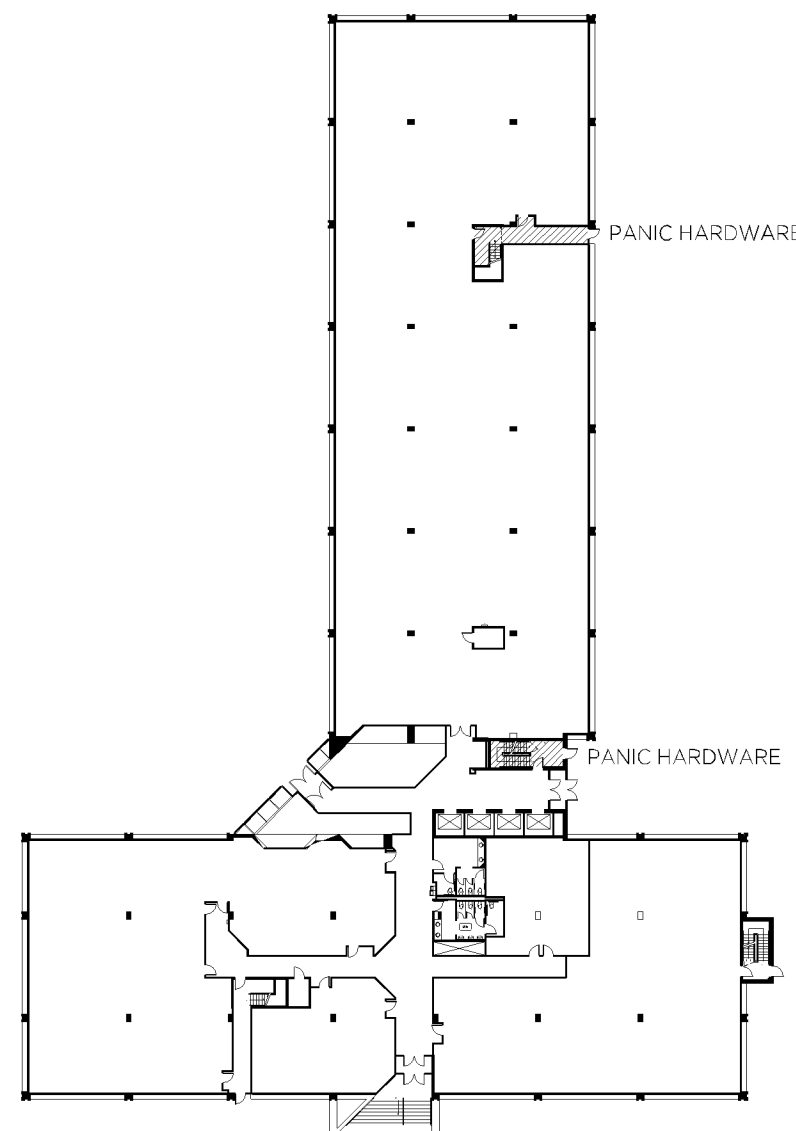


PL201900218

PL2019-218

The entire space to be sprinklered.

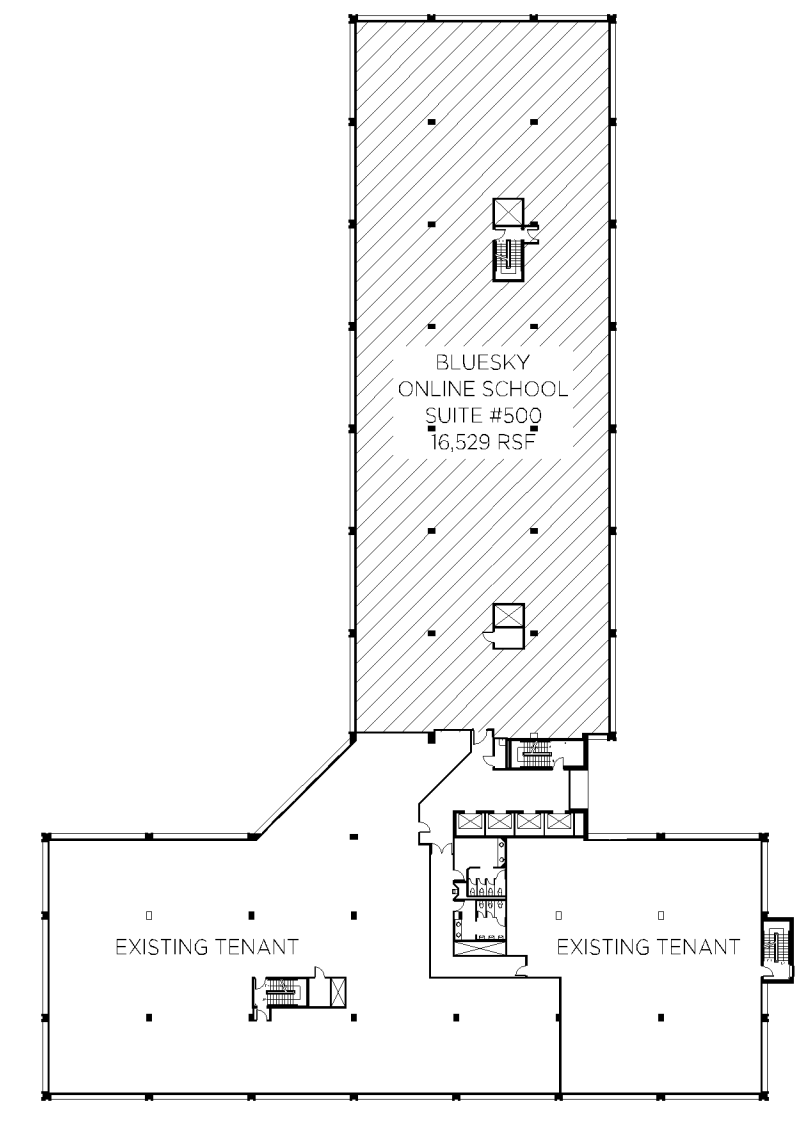
Fire alarm audible/visual devices required throughout.



3 LOCATION KEY (NEW PANIC HARDWARE)  
SP FIRST FLOOR N.T.S.

| WALL SYMBOLS KEY   |  |
|--|--|
|  | EXISTING CONSTRUCTION TO REMAIN  |
|  | EXISTING CONSTRUCTION TO BE DEMOLISHED   |
|  | EXISTING PARTITION TO BE EXTENDED TO DECK AND SOUND INSULATED  |
|  | NEW BUILDING STANDARD DEMISING PARTITION:<br>3/8" STEEL STUDS SPACED 24" O.C. TO UNDERFLOOR OF DECK, 5/8" GYPSUM BOARD, TAPED AND SANDED BOTH SIDES, FULL BATT INSULATION IN WALL CAVITY   |
|  | NEW INTERIOR PARTITION:<br>3/8" STEEL STUDS SPACED 24" O.C. TO ACoustICAL CEILING, 5/8" GYPSUM BOARD, TAPED AND SANDED BOTH SIDES  |
|  | NEW INTERIOR PARTITION WITH INSULATION:<br>3/8" STEEL STUDS SPACED 24" O.C. TO UNDERFLOOR OF ACoustICAL CEILING, 5/8" GYPSUM BOARD, TAPED AND SANDED BOTH SIDES, FULL BATT INSULATION IN WALL CAVITY AND 4" WIDE BATT INSULATION OVER WALL IN VOID         |
|  | NEW INTERIOR PARTITION, PARTIAL HEIGHT:<br>3/8" STEEL STUDS SPACED 24" O.C. TO 60" FINISHED HEIGHT, 5/8" GYPSUM BOARD, TAPED AND SANDED BOTH SIDES, P. LAM/ WOOD TOP CAP, ATTACHED TO DECK AT END OF WALL  |
|  | NEW INTERIOR PARTITION, PARTIAL HEIGHT:<br>3/8" STEEL STUDS SPACED 24" O.C. TO 60" FINISHED HEIGHT, 5/8" GYPSUM BOARD, TAPED AND SANDED BOTH SIDES, P. LAM/ WOOD TOP CAP WITH FINISHED SPRING TO ACoustICAL CEILING ABOVE, ATTACHED TO DECK AT END OF WALL |
|  | NEW FULL HEIGHT FRAMED GLASS PARTITION:<br>CLEAR TEMPERED/ LAMINATED SAFETY GLASS IN HOLLOW METAL FRAME TO MATCH BUILDING STANDARD DOOR FRAME  |
|  | NEW BUTT GLASS PARTITION:<br>CLEAR TEMPERED/ LAMINATED SAFETY GLASS IN GLAZING CHANNEL WITH CLEAR SILICONE GASKETS   |
| VERIFY APPROPRIATE FIRE RATING OF ALL SHAFTS THROUGH FLOOR/ CEILING AND ROOF/ CEILING ASSEMBLIES:<br>FOUR STORIES OR MORE: 2-HOUR RATED ASSEMBLY |  |
| USE WATER RESISTANT GYPSUM BOARD FOR ALL WALLS AND CHASES CONTAINING PLUMBING.   |  |

- NOTES:
- ROOM DIMENSIONS SHOWN ARE APPROXIMATE.
  - ALL FREESTANDING FURNITURE SHOWN IS PROVIDED BY TENANT.
  - THIS PLAN IS FOR LAYOUT PURPOSES ONLY, NOT FOR CONSTRUCTION.
  - FULLY SPRINKLERED BUILDING.
  - PANIC HARDWARE EXTENDING AT LEAST ONE-HALF OF THE DOOR WIDTH IS REQUIRED IN ALL SPACES WITH AN OCCUPANT LOAD OF 50 OR MORE, AND AT THE ACCESS AND EXIT DOORS OF STAIRS A AND B.
  - ALL OCCUPANTS OF THE FLOOR MUST HAVE ACCESS TO TWO EXIT STAIRS.



4 LOCATION KEY  
SP FIFTH FLOOR N.T.S.

REVISIONS DATE

SOUTH LOOP  
OFFICE CENTER

PROJECT NAME  
BLUESKY ONLINE SCHOOL  
SOUTH LOOP OFFICE CENTER  
2051 KILLEBREW DRIVE  
FIFTH FLOOR, SUITE #500  
BLOOMINGTON, MN 55425

DRAWING TITLE  
DEMOLITION PLAN  
SPACE PLAN

DATE 09/09/19  
DRAWN BY SPM  
APPROVED BY ML  
SCALE 3/32" = 1'-0"  
SHEET SP  
OF 1 SHEET(S)

archimea  
Interior Design Services, Inc.  
3001 Meno Drive, Suite 450, Bloomington, MN 55425 952-854-5258

HEREBY CERTIFY THAT THIS PLAN, SPECIFICATION, OR REPORT WAS PREPARED BY ME OR UNDER MY DIRECT SUPERVISION AND THAT I AM A DULY LICENSED INTERIOR DESIGNER UNDER THE LAWS OF THE STATE OF MINNESOTA.

DATE: REG. NO.: C00754