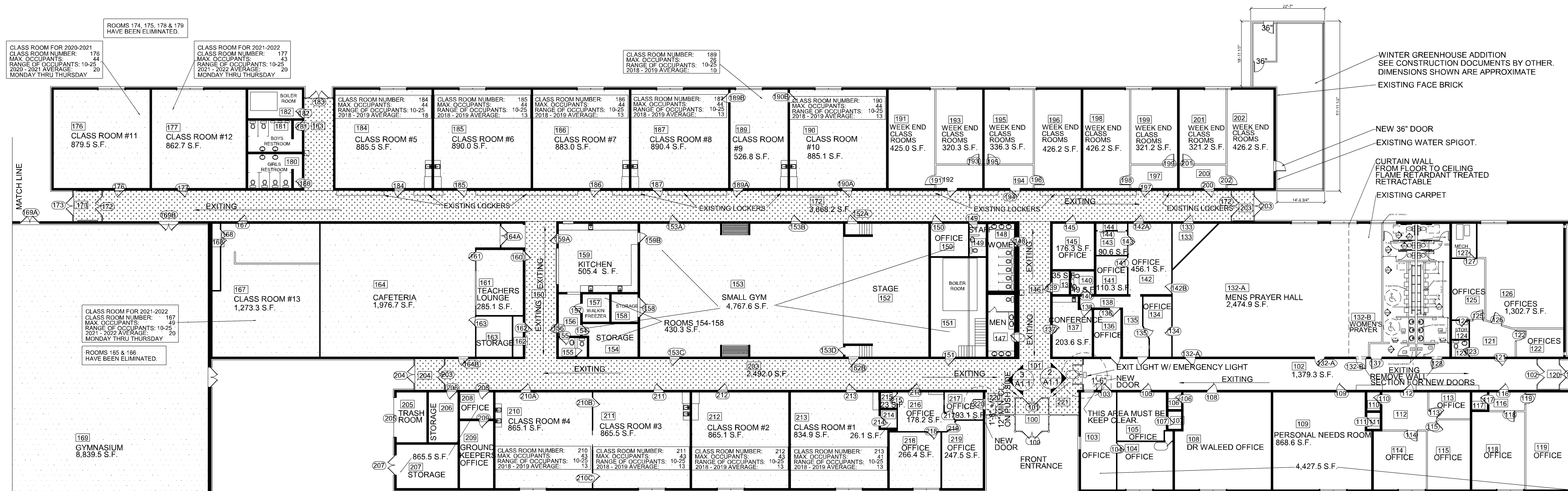


I hereby certify that this plan, specification, or report was prepared by me or under my direct supervision and that I am a duly Licensed Architect under the laws of the state of Minnesota.
Signature: *John K. Gaspar*
Typed Name: JOHN K. GASPAR
Date: 06-02-2020 Reg. No. 16430



1 BUILDING PLAN
SCALE: 1/16"=1'-0"

SCHOOL OCCUPANCY PLAN 2018 - 2019, 2019-2020, 2020-2021 & 2021-2022

CLASS ROOM OCCUPANCY
1 OCCUPANT PER 20 SQ. FT.
THIS INCLUDES STUDENTS AND TEACHERS.

OFFICE OCCUPANCY
1 PER 100 SQ. FT.
THIS INCLUDES STUDENTS AND TEACHERS.

130 TOTAL STUDENTS TO BE ENROLLED THRU SPRING OF 2020.
EACH CLASS ROOM IS SHOWN AS MAXIMUM OCCUPANTS ALLOWED.
EACH CLASS ROOM IS SHOWN AS A RANGE OF OCCUPANTS FOR SCHOOL YEAR 2018 THRU SPRING 2022.

CLASS ROOMS SHOWN AS:

CLASS ROOM NUMBER:	210	211	212	213
MAX. OCCUPANTS:	43	43	43	41
RANGE OF OCCUPANTS:	10-25	10-25	10-25	10-25
2018 - 2019 AVERAGE:	13	13	13	13

OCCUPANT LOAD: 2018 - 2020

STUDENTS:	130
TEACHERS & STAFF:	20
TOTAL:	150

OCCUPANT LOAD: 2020 - 2021 FOR 4 & 5 DAY DAY STUDENTS

STUDENTS:	150
TEACHERS & STAFF:	21
TOTAL:	171

OCCUPANT LOAD: 2021 - 2022 FOR 4 & 5 DAY DAY STUDENTS

STUDENTS:	180
TEACHERS & STAFF:	23
TOTAL:	203

PLUMBING FIXTURES REQUIRED: 1 FIXTURE PER 50 OCCUPANTS
3 PLUMBING FIXTURES ARE REQUIRED.

EXISTING PLUMBING FIXTURES:

MALE STUDENTS	3 WATER CLOSETS	3 URINALS
FEMALE STUDENTS	9 WATER CLOSETS	
STAFF	3 WATER CLOSETS	

PARKING:
PARKING WITH & WITH OUT BUS LOADING AREA.
149 PARKING SPACES WITH 3 BUS SPACES THIS INCLUDES 8 ACCESSIBLE PARKING SPACES.
157 EXISTING PARKING SPACES WITH OUT BUS PARKING THIS INCLUDES 6 ACCESSIBLE PARKING SPACES.
72 EXISTING PARKING SPACES AT SMITH PARK INCLUDING 2 ACCESSIBLE PARKING SPACES.
36 EXISTING PARKING SPACES AT CHICAGO LOT INCLUDING 1 ACCESSIBLE PARKING SPACE.
265 TOTAL EXISTING PARKING SPACES WITH OUT BUS PARKING.

PROPOSED ADDITIONAL PARKING IF REQUIRED:
19 SPACES IN FRONT OF THE GYM.
27 AT THE CORNER OF 83RD STREET EAST AND COLUMBUS AVE.
1 AT EXISTING SOUTH EAST PARKING PER REVISING ACCESSIBLE PARKING.
312 TOTAL PARKING SPACES EXISTING, NEW AND REVISED THIS INCLUDES 15 ACCESSIBLE PARKING SPACES.

PROPOSED FUTURE PROOF OF PARKING:
SOUTH EAST PLAYING FIELD
48 PARKING SPACES INCLUDING 2 ACCESSIBLE

SCHOOL HOURS:
MONDAY THROUGH THURSDAY: 7:30 UNTIL 3:00
FRIDAY: 7:30 UNTIL 11:30

CLASS ROOMS 167, 176 & 177 ARE 4 DAY CLASS ROOMS
MONDAY THROUGH THURSDAY: 7:30 UNTIL 3:00

GYM TO BE USED ONLY BY STUDENTS DURING SCHOOL HOURS.

GENERAL INFORMATION

CODES USED: 2020 MINNESOTA STATE BUILDING CODE W/ ANSI A117.1-2009 ACCESSIBILITY RULES.
2010 STANDARDS FOR ACCESSIBLE DESIGN
2015 MECHANICAL AND FUEL GAS CODE
2017 NEC
2015 MINNESOTA STATE PLUMBING CODE

EXISTING BUILDING: DAR AL FAROOQ CENTER
WAS SCHOOL BUILDING
FOOT PRINT: 61,130 SQ. FT.
BUILDING USES: MOSQUE (A-3) & SCHOOL (E)
BUILDING CONSTRUCTION ASSUMED TO BE: III-B
NON COMBUSTIBLE CONSTRUCTION
HAS A AUTOMATIC SPRINKLER SYSTEM AND WILL BE REWORKED AS NEEDED.
SURROUNDED AND ADJOINED BY PUBLIC WAYS OR YARDS OF NOT LESS THAN 60 FEET.

SHEET SCHEDULE

A1.1	BUILDING PLAN
------	---------------

SUCCESS ACADEMY Dar Al Farooq Center

8201 Park Ave South
Bloomington, Mn. 55420

Issues & Revisions:

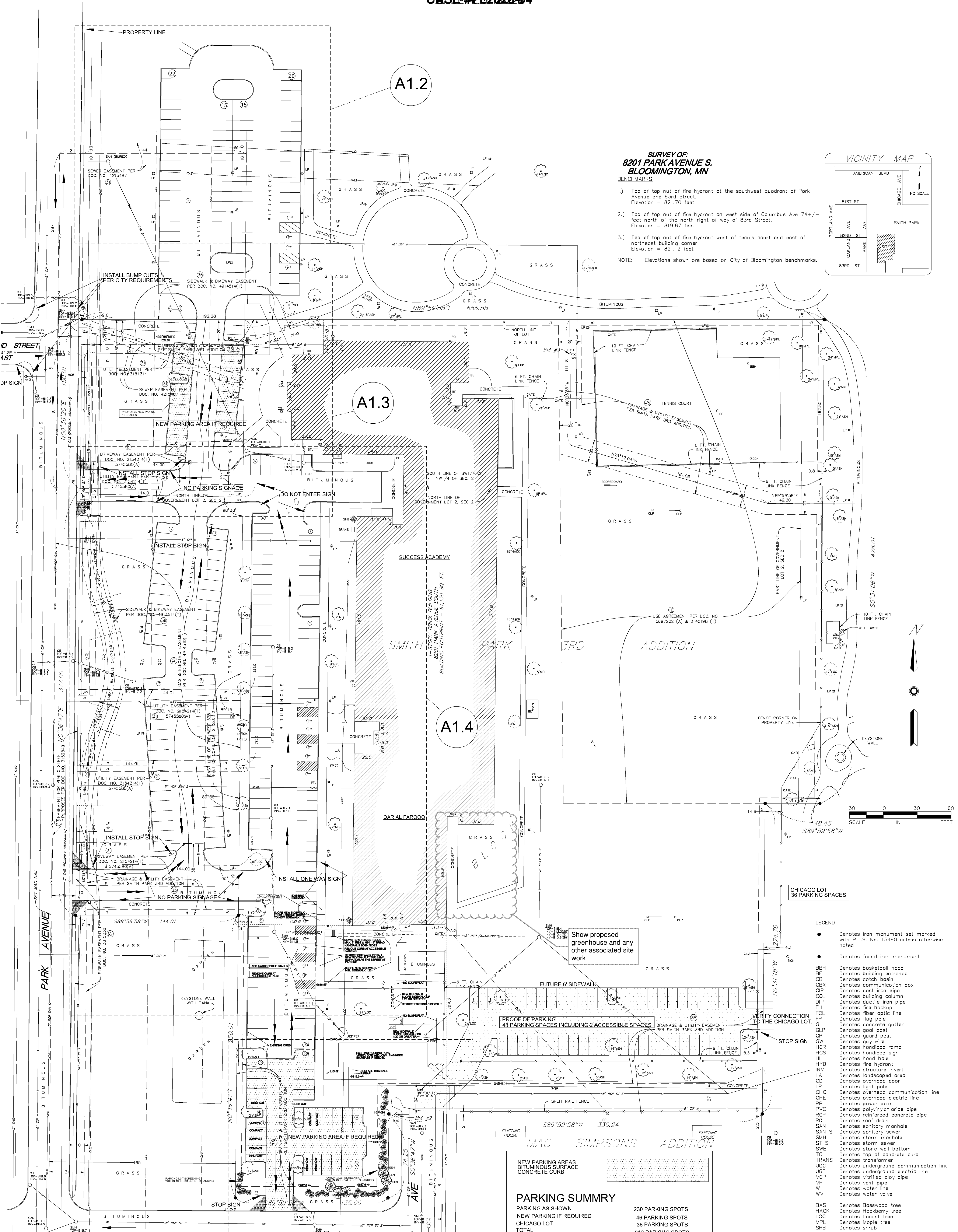
06-02-2020	ENROLLMENT FOR NEW CLASS ROOMS THRU SPRING 2022 AND WINTER GREENHOUSE.

Comm. No.: **2018014**
Drawn By: **J.K.G.**
Date: **06/02/2020**

SCHOOL OCCUPANCY PLAN THRU 2022 & GREENHOUSE BUILDING PLAN

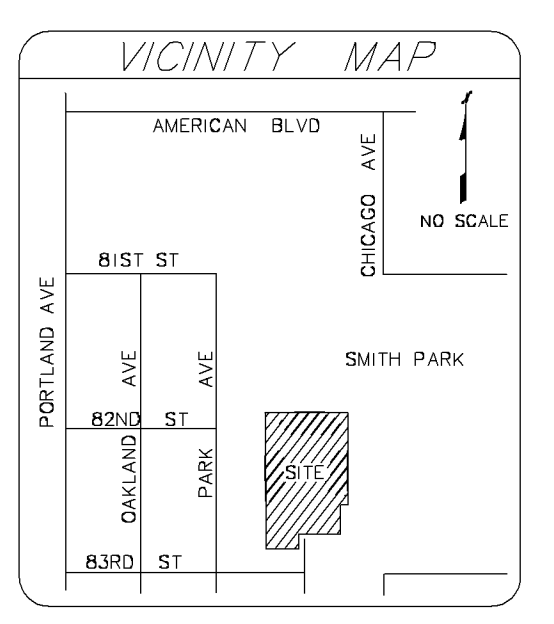
Sheet No.:

A1.1



**SURVEY OF:
8201 PARK AVENUE S.
BLOOMINGTON, MN**

- BENCHMARKS**
- 1.) Top of top nut of fire hydrant at the southwest quadrant of Park Avenue and 83rd Street. Elevation = 821.70 feet
 - 2.) Top of top nut of fire hydrant on west side of Columbus Ave 74 +/- feet north of the north right of way of 83rd Street. Elevation = 819.87 feet
 - 3.) Top of top nut of fire hydrant west of tennis court and east of northeast building corner. Elevation = 821.12 feet
- NOTE: Elevations shown are based on City of Bloomington benchmarks.



VICINITY MAP

AMERICAN BLVD
CHICAGO AVE
NO SCALE
PORTLAND AVE
BIST ST
8201 ST
8300 ST
83RD ST
8200 ST
8100 ST
8000 ST
7900 ST
7800 ST
7700 ST
7600 ST
7500 ST
7400 ST
7300 ST
7200 ST
7100 ST
7000 ST
6900 ST
6800 ST
6700 ST
6600 ST
6500 ST
6400 ST
6300 ST
6200 ST
6100 ST
6000 ST
5900 ST
5800 ST
5700 ST
5600 ST
5500 ST
5400 ST
5300 ST
5200 ST
5100 ST
5000 ST
4900 ST
4800 ST
4700 ST
4600 ST
4500 ST
4400 ST
4300 ST
4200 ST
4100 ST
4000 ST
3900 ST
3800 ST
3700 ST
3600 ST
3500 ST
3400 ST
3300 ST
3200 ST
3100 ST
3000 ST
2900 ST
2800 ST
2700 ST
2600 ST
2500 ST
2400 ST
2300 ST
2200 ST
2100 ST
2000 ST
1900 ST
1800 ST
1700 ST
1600 ST
1500 ST
1400 ST
1300 ST
1200 ST
1100 ST
1000 ST
900 ST
800 ST
700 ST
600 ST
500 ST
400 ST
300 ST
200 ST
100 ST
0 ST

SMITH PARK

SCALE IN FEET

30 0 30 60

SCALE IN FEET

30 0 30 60

SCALE IN FEET

30 0 30 60

SCALE IN FEET

30 0 30 60

SCALE IN FEET

30 0 30 60

SCALE IN FEET

30 0 30 60

SCALE IN FEET

30 0 30 60

SCALE IN FEET

30 0 30 60

SCALE IN FEET

30 0 30 60

SCALE IN FEET

30 0 30 60

SCALE IN FEET

30 0 30 60

SCALE IN FEET

30 0 30 60

SCALE IN FEET

30 0 30 60

SCALE IN FEET

30 0 30 60

SCALE IN FEET

30 0 30 60

SCALE IN FEET

30 0 30 60

SCALE IN FEET

30 0 30 60

SCALE IN FEET

30 0 30 60

SCALE IN FEET

Show proposed greenhouse and any other associated site work

PROOF OF PARKING
48 PARKING SPACES INCLUDING 2 ACCESSIBLE SPACES

VERIFY CONNECTION TO THE CHICAGO LOT.

STOP SIGN

NEW PARKING AREAS
BITUMINOUS SURFACE
CONCRETE CURB

PARKING SUMMARY

PARKING AS SHOWN	230 PARKING SPOTS
NEW PARKING IF REQUIRED	46 PARKING SPOTS
CHICAGO LOT	36 PARKING SPOTS
TOTAL	312 PARKING SPOTS

PROOF OF PARKING

PROOF OF PARKING
SOUTH END OF SOCCER FIELD

TOTAL WITH PROOF OF PARKING

DIRECTION OF TRAFFIC

15' X 15' CLEAR VIEW TRIANGLE

Issues & Revisions:

7-19-18	PARKING AND DRIVES
7-26-18	REMOVE ENTRY @ SMITH PARK
7-27-18	NORTH ENTRY/EXIT TWO WAY
7-27-18	REVISED LANDSCAPING

LEGEND

- Denotes iron monument set marked with P.L.S. No. 15480 unless otherwise noted
- Denotes found iron monument
- BBH Denotes basketball hoop
- CB Denotes catch basin
- CBX Denotes communication box
- CIP Denotes cast iron pipe
- COL Denotes building column
- DIP Denotes ductile iron pipe
- FH Denotes fire hookup
- FOL Denotes fiber optic line
- FP Denotes flag pole
- GC Denotes concrete gutter
- GLP Denotes goal post
- GP Denotes guy wire
- CW Denotes handicap ramp
- HCR Denotes handicap sign
- HCS Denotes hand hole
- HYD Denotes fire hydrant
- INV Denotes structure invert
- LA Denotes landscaped area
- OD Denotes overhead door
- LP Denotes light pole
- OHC Denotes overhead communication line
- OPE Denotes overhead electric line
- PP Denotes power pole
- PVC Denotes polyvinylchloride pipe
- RCP Denotes reinforced concrete pipe
- RD Denotes road drain
- SAN Denotes sanitary manhole
- SAN S Denotes sanitary sewer
- SMH Denotes storm manhole
- ST S Denotes storm sewer
- SWB Denotes stone wall balltop
- TC Denotes top of concrete curb
- TRANS Denotes transformer
- UGC Denotes underground communication line
- UGE Denotes underground electric line
- VCP Denotes vitrified clay pipe
- VP Denotes vent pipe
- W Denotes water line
- WV Denotes water valve
- BAS Denotes Basswood tree
- HACK Denotes Hackberry tree
- LOC Denotes Locust tree
- MPL Denotes Maple tree
- SHB Denotes shrub

LANDSCAPING
EXISTING TO BE APPROVED BY CITY PLANNERS AND/OR CITY FORESTER

- ASH EXISTING
- EVERGREEN
- DECIDUOUS
- SHRUBS ON A MULCH BASE SPACED TO ENSURE CLOSURE WITH HEIGHT BETWEEN 36" MIN AND 48" MAX. MINIMUM 24" TALL AT PLANTING. MIN NEW 32

SHEET SCHEDULE

A1.1	SMITH PARK PARKING LOT
A1.2	SMITH PARK PARKING LOT
A1.3	SMITH PARK PARKING LOT
A1.4	SMITH PARK PARKING LOT
A1.5	SMITH PARK PARKING LOT
A1.6	SMITH PARK PARKING LOT
A1.7	SMITH PARK PARKING LOT
A1.8	SMITH PARK PARKING LOT
A1.9	SMITH PARK PARKING LOT
A1.10	SMITH PARK PARKING LOT
A1.11	SMITH PARK PARKING LOT
A1.12	SMITH PARK PARKING LOT
A1.13	SMITH PARK PARKING LOT
A1.14	SMITH PARK PARKING LOT
A1.15	SMITH PARK PARKING LOT
A1.16	SMITH PARK PARKING LOT
A1.17	SMITH PARK PARKING LOT
A1.18	SMITH PARK PARKING LOT
A1.19	SMITH PARK PARKING LOT
A1.20	SMITH PARK PARKING LOT
A1.21	SMITH PARK PARKING LOT
A1.22	SMITH PARK PARKING LOT
A1.23	SMITH PARK PARKING LOT
A1.24	SMITH PARK PARKING LOT
A1.25	SMITH PARK PARKING LOT
A1.26	SMITH PARK PARKING LOT
A1.27	SMITH PARK PARKING LOT
A1.28	SMITH PARK PARKING LOT
A1.29	SMITH PARK PARKING LOT
A1.30	SMITH PARK PARKING LOT
A1.31	SMITH PARK PARKING LOT
A1.32	SMITH PARK PARKING LOT
A1.33	SMITH PARK PARKING LOT
A1.34	SMITH PARK PARKING LOT
A1.35	SMITH PARK PARKING LOT
A1.36	SMITH PARK PARKING LOT
A1.37	SMITH PARK PARKING LOT
A1.38	SMITH PARK PARKING LOT
A1.39	SMITH PARK PARKING LOT
A1.40	SMITH PARK PARKING LOT
A1.41	SMITH PARK PARKING LOT
A1.42	SMITH PARK PARKING LOT
A1.43	SMITH PARK PARKING LOT
A1.44	SMITH PARK PARKING LOT
A1.45	SMITH PARK PARKING LOT
A1.46	SMITH PARK PARKING LOT
A1.47	SMITH PARK PARKING LOT
A1.48	SMITH PARK PARKING LOT
A1.49	SMITH PARK PARKING LOT
A1.50	SMITH PARK PARKING LOT
A1.51	SMITH PARK PARKING LOT
A1.52	SMITH PARK PARKING LOT
A1.53	SMITH PARK PARKING LOT
A1.54	SMITH PARK PARKING LOT
A1.55	SMITH PARK PARKING LOT
A1.56	SMITH PARK PARKING LOT
A1.57	SMITH PARK PARKING LOT
A1.58	SMITH PARK PARKING LOT
A1.59	SMITH PARK PARKING LOT
A1.60	SMITH PARK PARKING LOT
A1.61	SMITH PARK PARKING LOT
A1.62	SMITH PARK PARKING LOT
A1.63	SMITH PARK PARKING LOT
A1.64	SMITH PARK PARKING LOT
A1.65	SMITH PARK PARKING LOT
A1.66	SMITH PARK PARKING LOT
A1.67	SMITH PARK PARKING LOT
A1.68	SMITH PARK PARKING LOT
A1.69	SMITH PARK PARKING LOT
A1.70	SMITH PARK PARKING LOT
A1.71	SMITH PARK PARKING LOT
A1.72	SMITH PARK PARKING LOT
A1.73	SMITH PARK PARKING LOT
A1.74	SMITH PARK PARKING LOT
A1.75	SMITH PARK PARKING LOT
A1.76	SMITH PARK PARKING LOT
A1.77	SMITH PARK PARKING LOT
A1.78	SMITH PARK PARKING LOT
A1.79	SMITH PARK PARKING LOT
A1.80	SMITH PARK PARKING LOT
A1.81	SMITH PARK PARKING LOT
A1.82	SMITH PARK PARKING LOT
A1.83	SMITH PARK PARKING LOT
A1.84	SMITH PARK PARKING LOT
A1.85	SMITH PARK PARKING LOT
A1.86	SMITH PARK PARKING LOT
A1.87	SMITH PARK PARKING LOT
A1.88	SMITH PARK PARKING LOT
A1.89	SMITH PARK PARKING LOT
A1.90	SMITH PARK PARKING LOT
A1.91	SMITH PARK PARKING LOT
A1.92	SMITH PARK PARKING LOT
A1.93	SMITH PARK PARKING LOT
A1.94	SMITH PARK PARKING LOT
A1.95	SMITH PARK PARKING LOT
A1.96	SMITH PARK PARKING LOT
A1.97	SMITH PARK PARKING LOT
A1.98	SMITH PARK PARKING LOT
A1.99	SMITH PARK PARKING LOT
A1.100	SMITH PARK PARKING LOT

ARCHITECTS

1959 Sixon Place, Suite 100
Maplewood, MN 55117
Phone: (651) 487-3291
Fax: (651) 487-3283
www.NAI-Architects.com

I hereby certify that this plan, specification, or report was prepared by me or under my direct supervision and that I am a duly Licensed Architect under the laws of the State of Minnesota.

Signature: *J.K.G.*
Typed Name: J.K.G. GARDNER
Date: 06/20/2018 Reg. No.: 15630

**SUCCESS ACADEMY
Dar Al Farooq Center**

A1.1

Sheet No.: _____

Client Name: **SURVEY & SITE PLAN**

Comm. No: **2017041**

Drawn By: **J.K.G.**

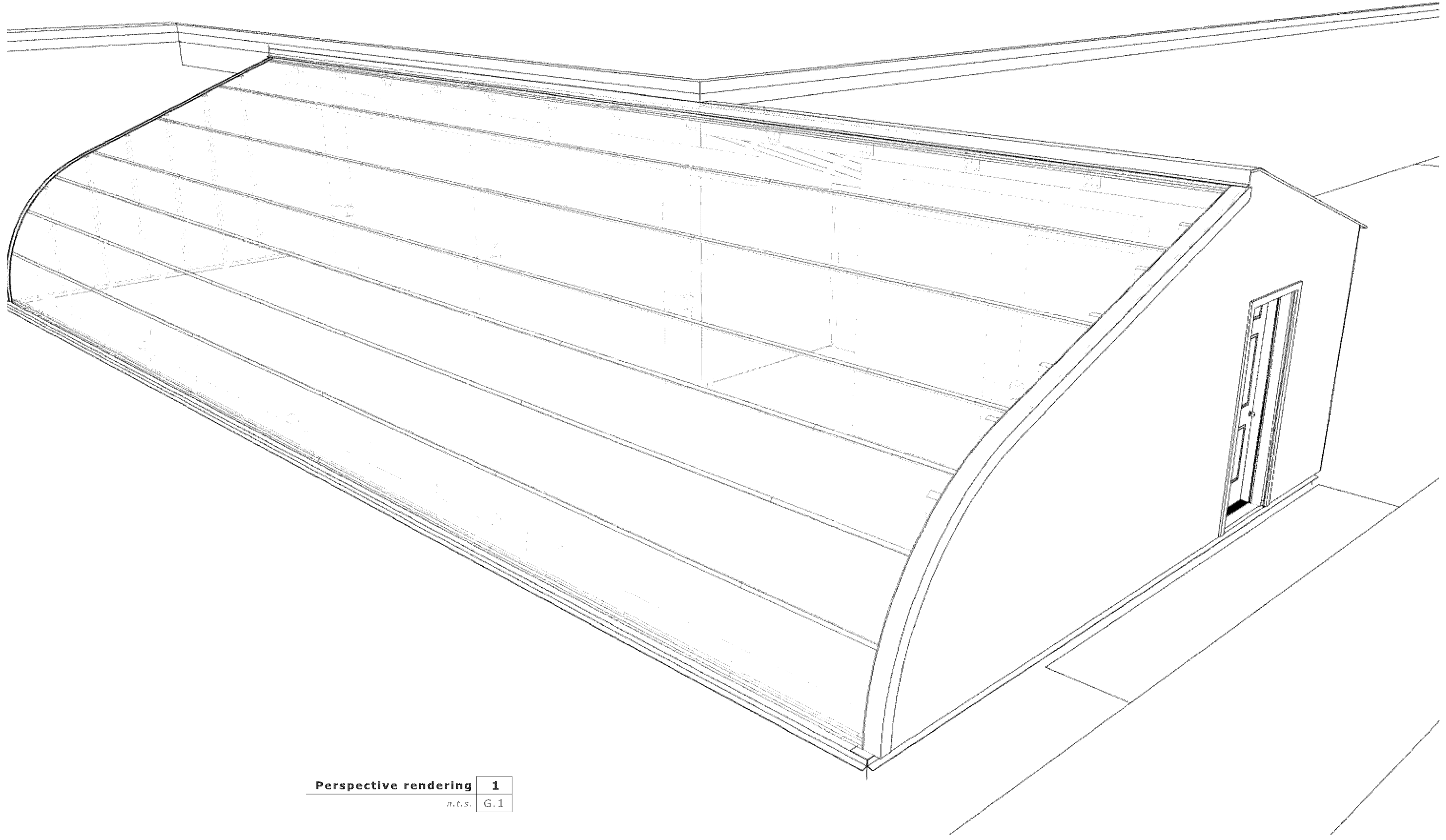
Date: **06/20/2018**

Scale: _____

North Arrow: **NORTH**

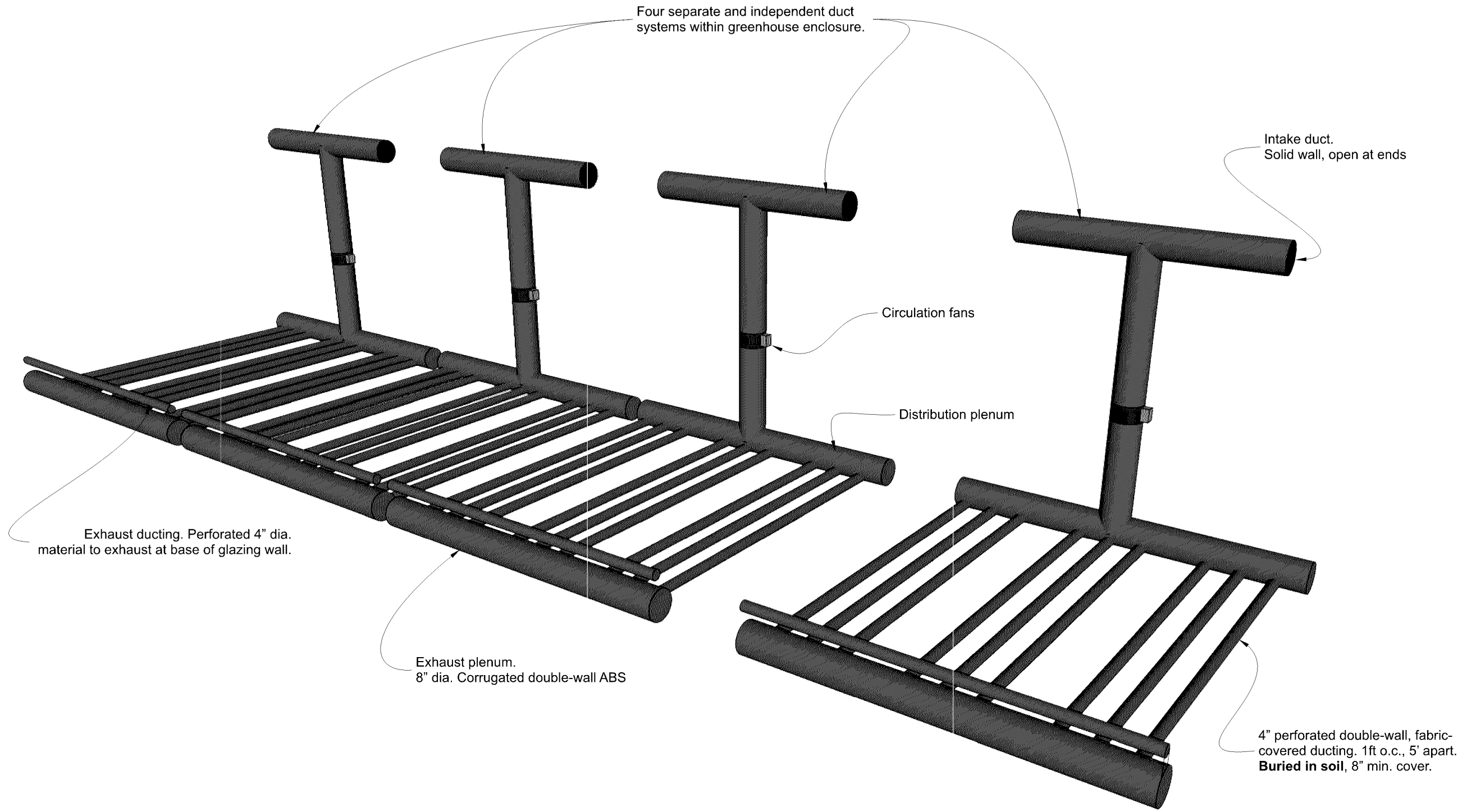
2821 Park Ave South
Bloomington, Mn. 55420

CASE #PL2020-94



Perspective rendering	1
<i>n.t.s.</i>	G.1

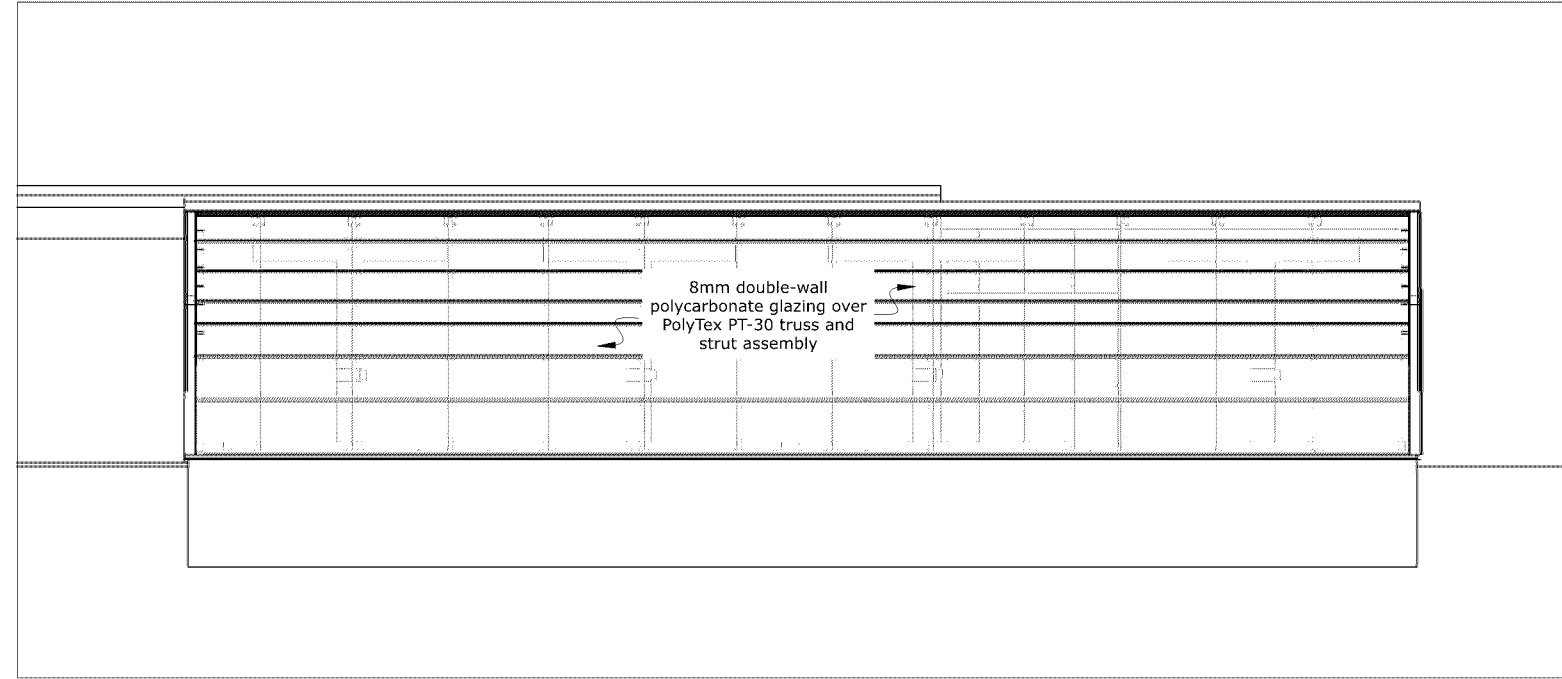
CASE #PL2020-94



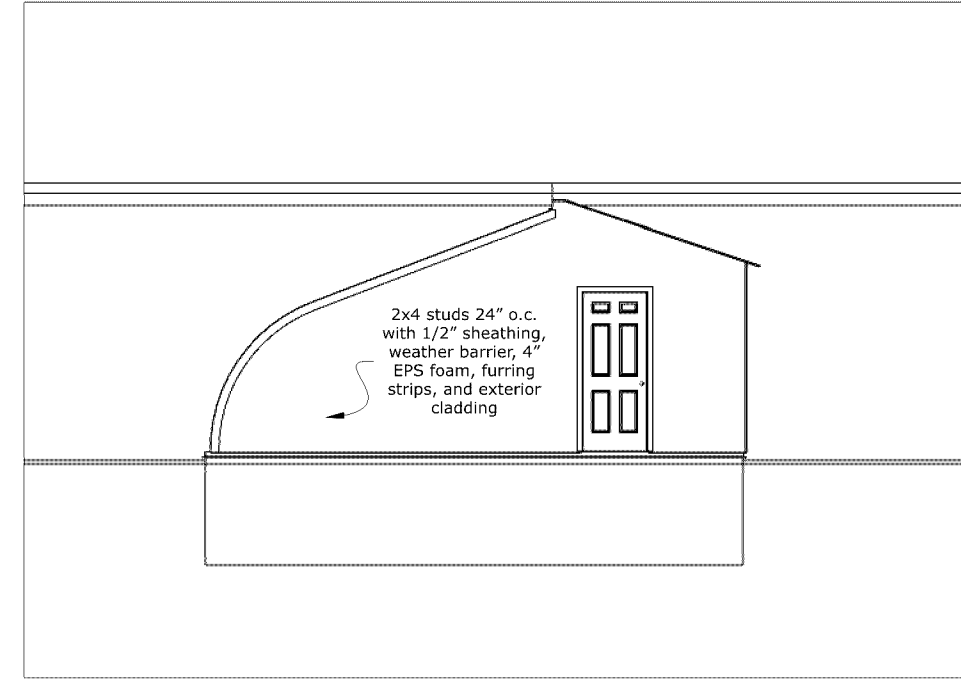
Duct system layout	1
n.t.s.	G.2

Success Academy Winter Greenhouse addition
 Draft April 22, 2020
 Not for construction. Measurements approximate, to be verified on site.

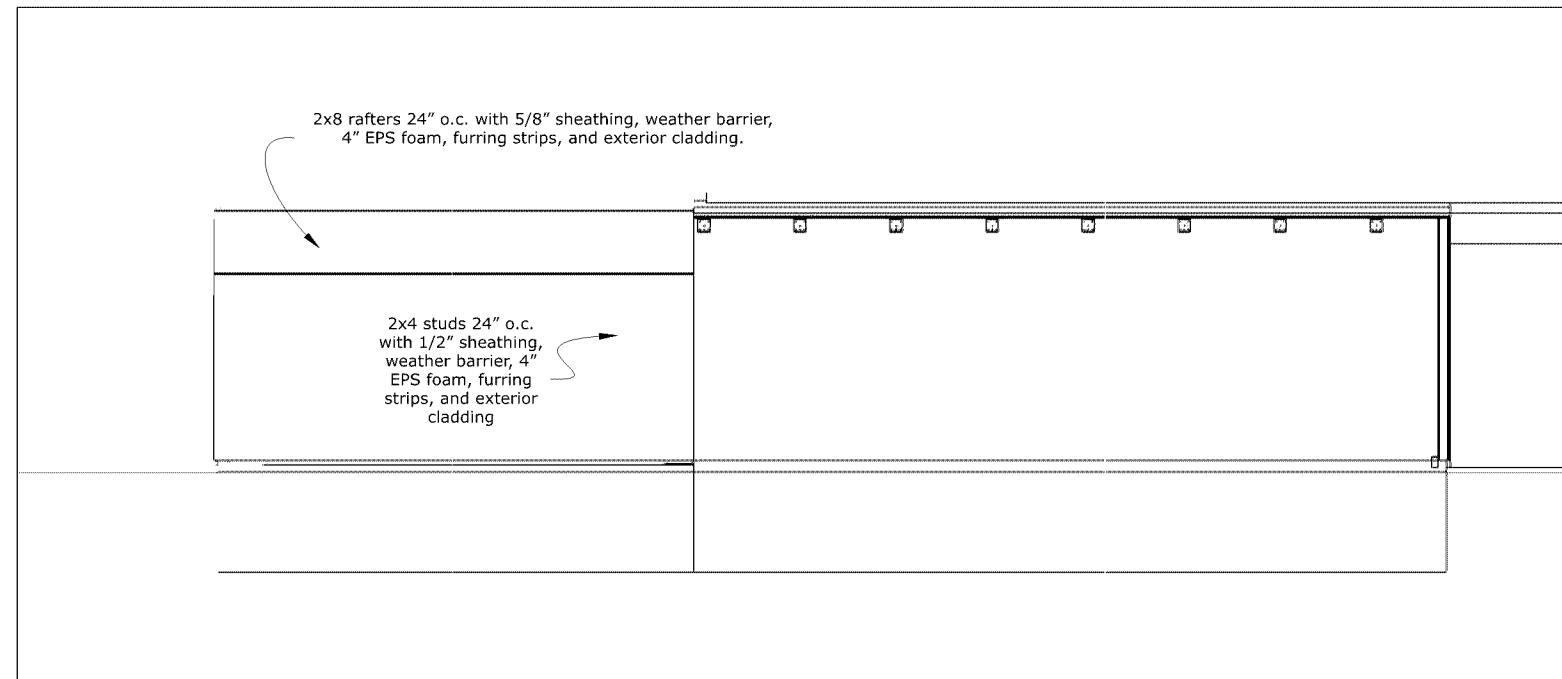
CASE #PL2020-94



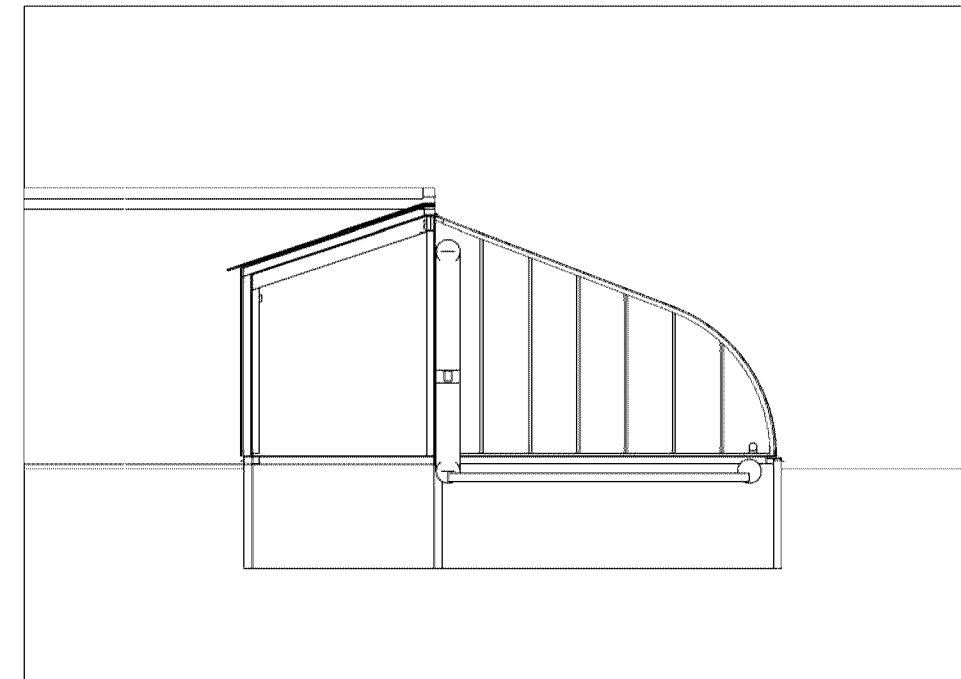
South Elevation 1
1/8"=1' A.1



East Elevation 2
1/8"=1' A.1

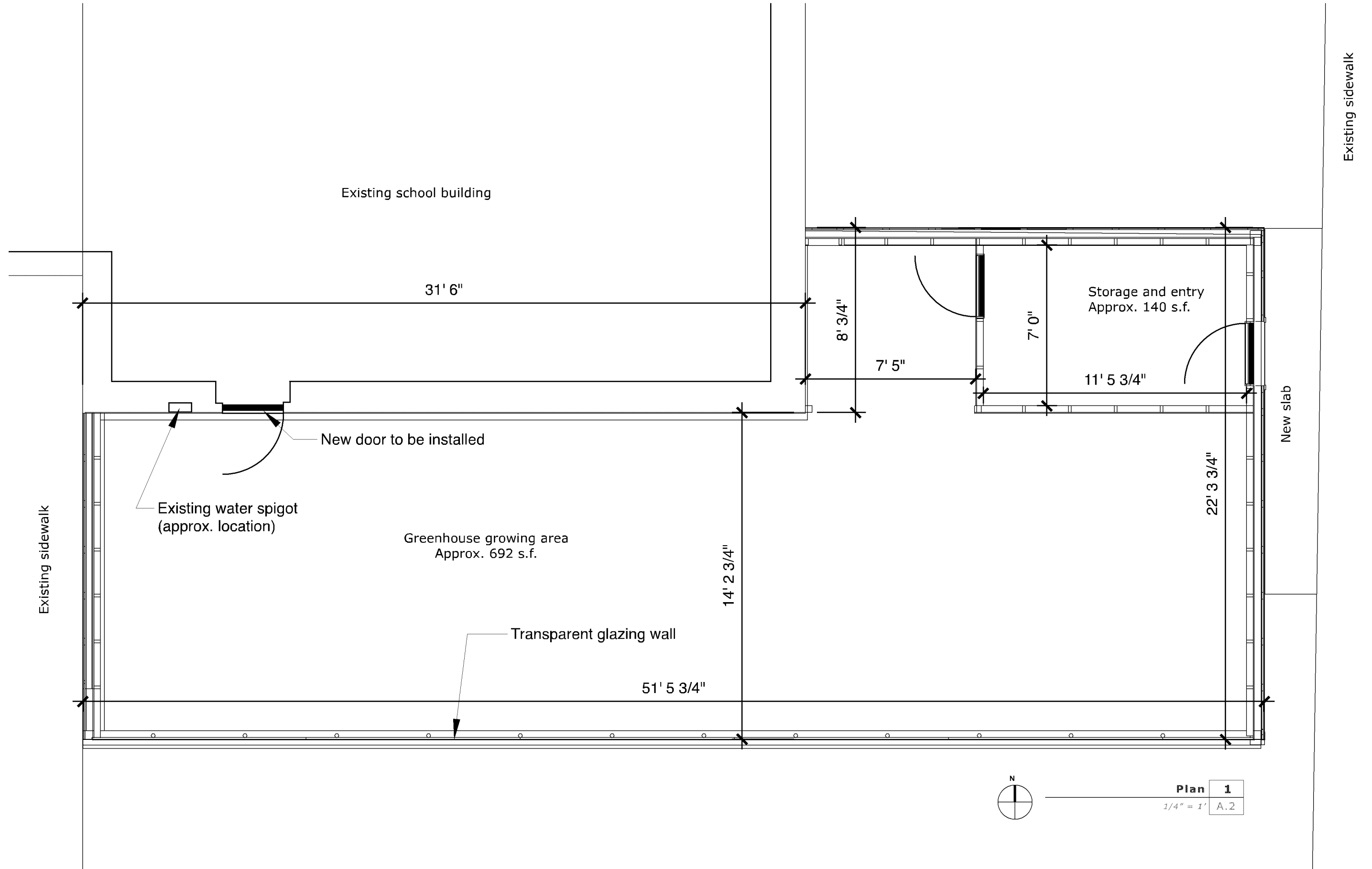


North Elevation 3
1/8"=1' A.1



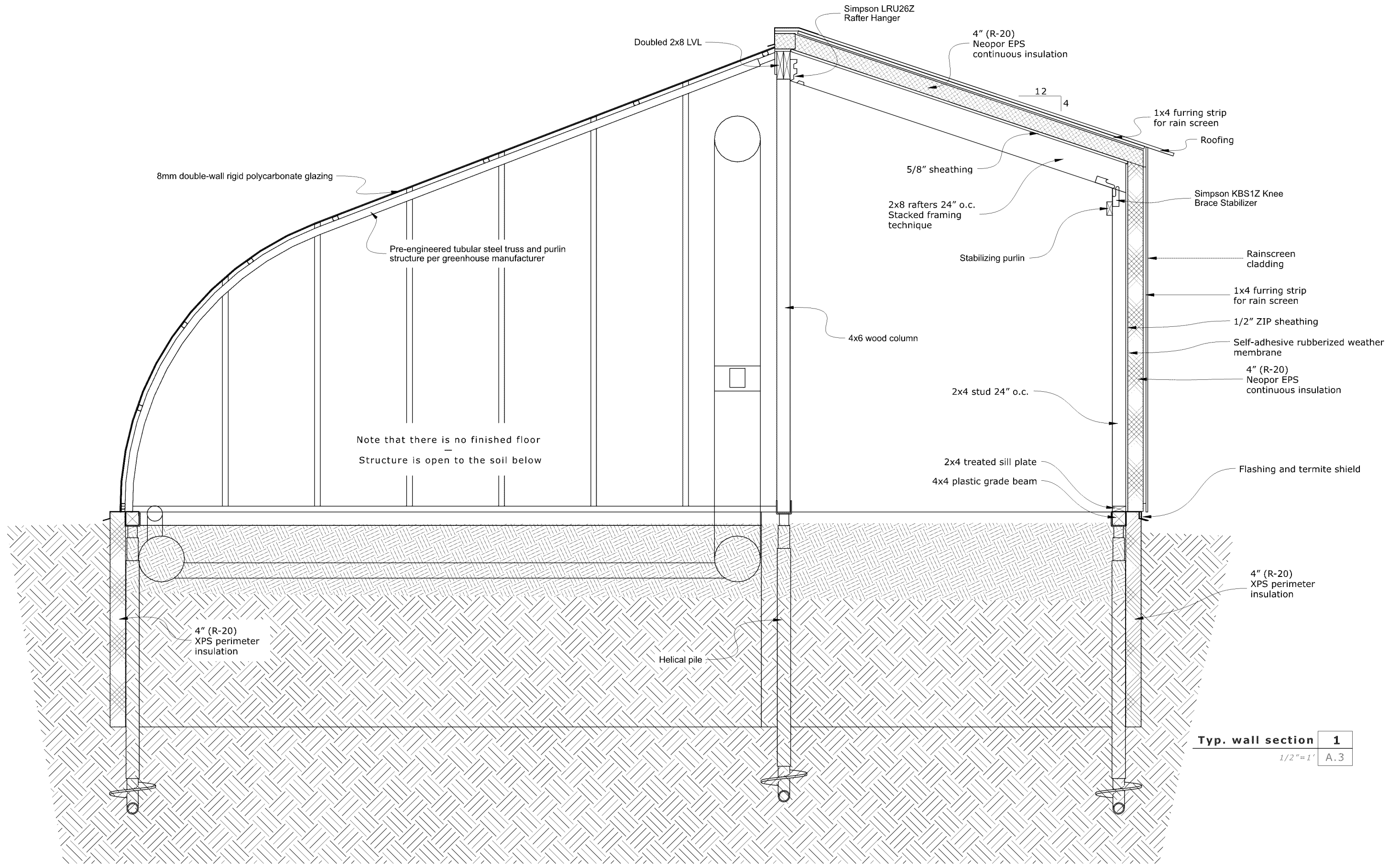
West Elevation 4
1/8"=1' A.1

CASE #PL2020-94



Success Academy Winter Greenhouse addition
Draft April 22, 2020
Not for construction. Measurements approximate, to be verified on site.

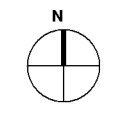
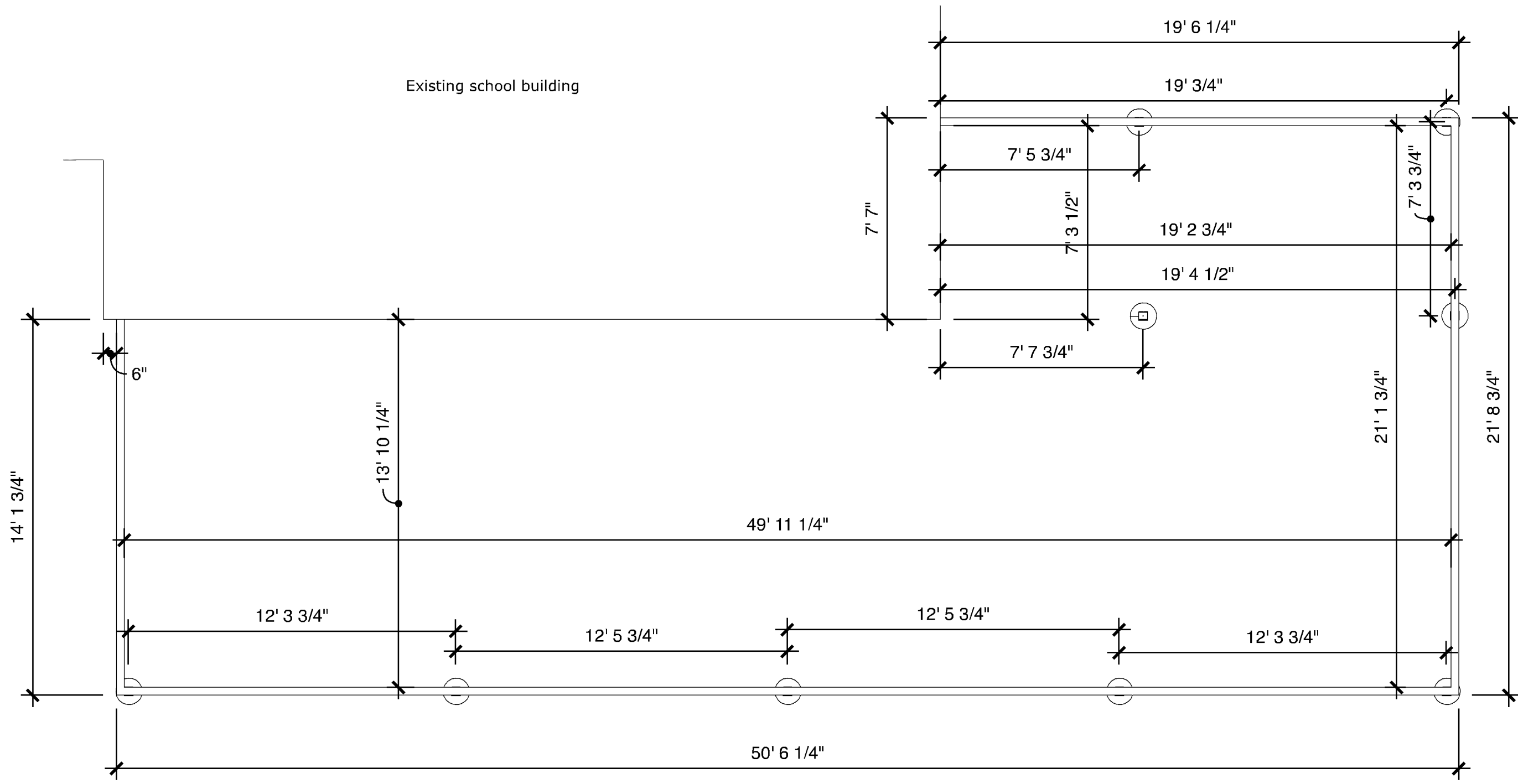
CASE #PL2020-94



Typ. wall section **1**
1/2" = 1' A.3

Success Academy Winter Greenhouse addition
Draft April 22, 2020
Not for construction. Measurements approximate, to be verified on site.

CASE #PL2020-94



Grade beam and Pile locations **1**
 1/4" = 1' A.4

Success Academy Winter Greenhouse addition
 Draft April 22, 2020
 Not for construction. Measurements approximate, to be verified on site.