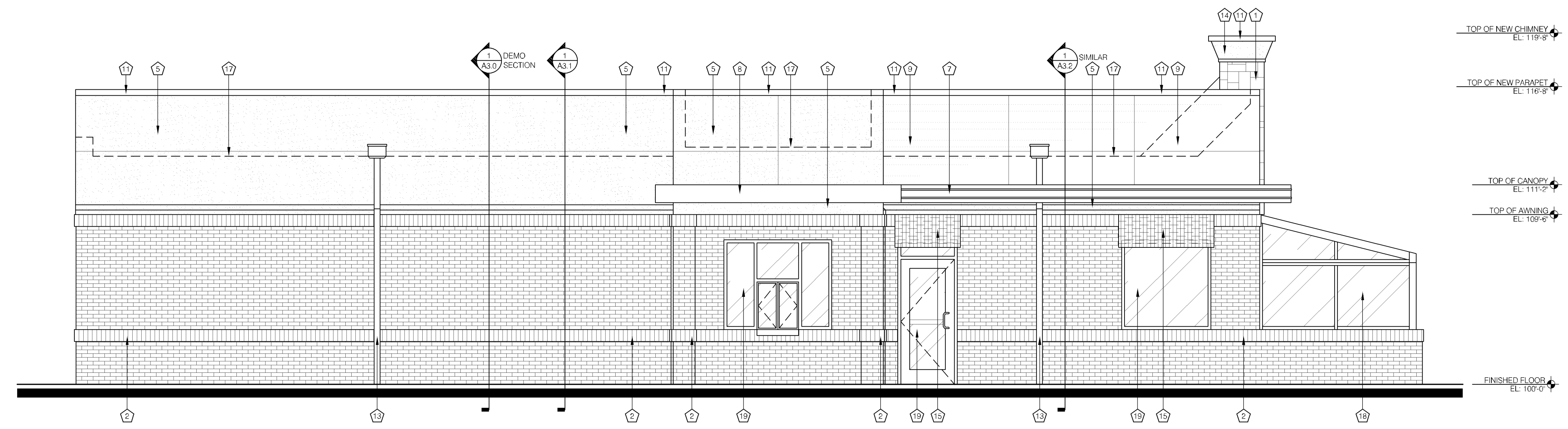
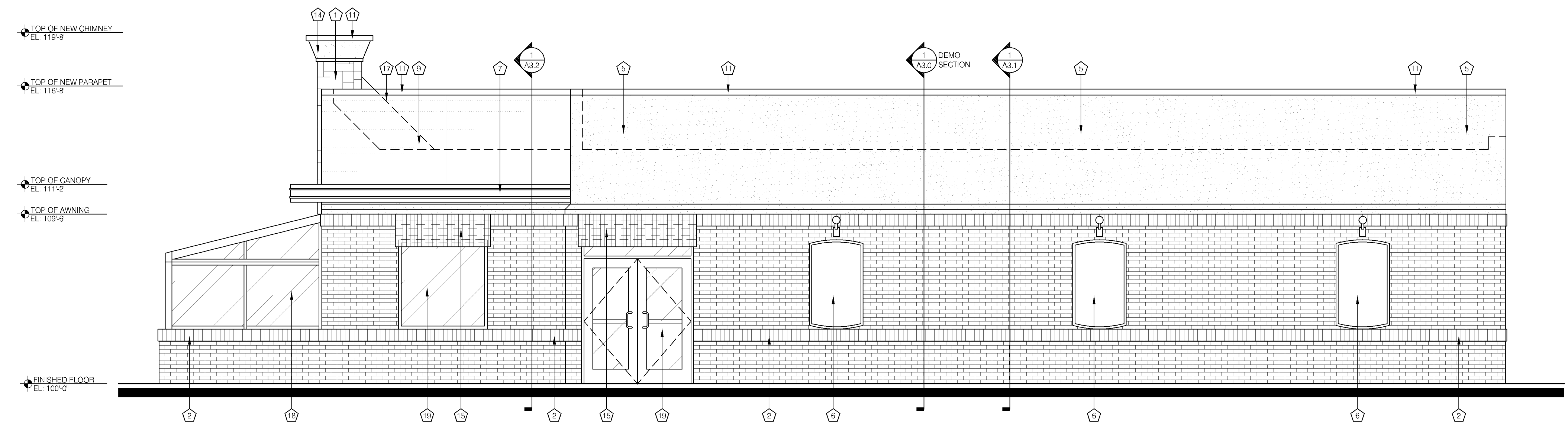


ELEVATION KEYNOTES

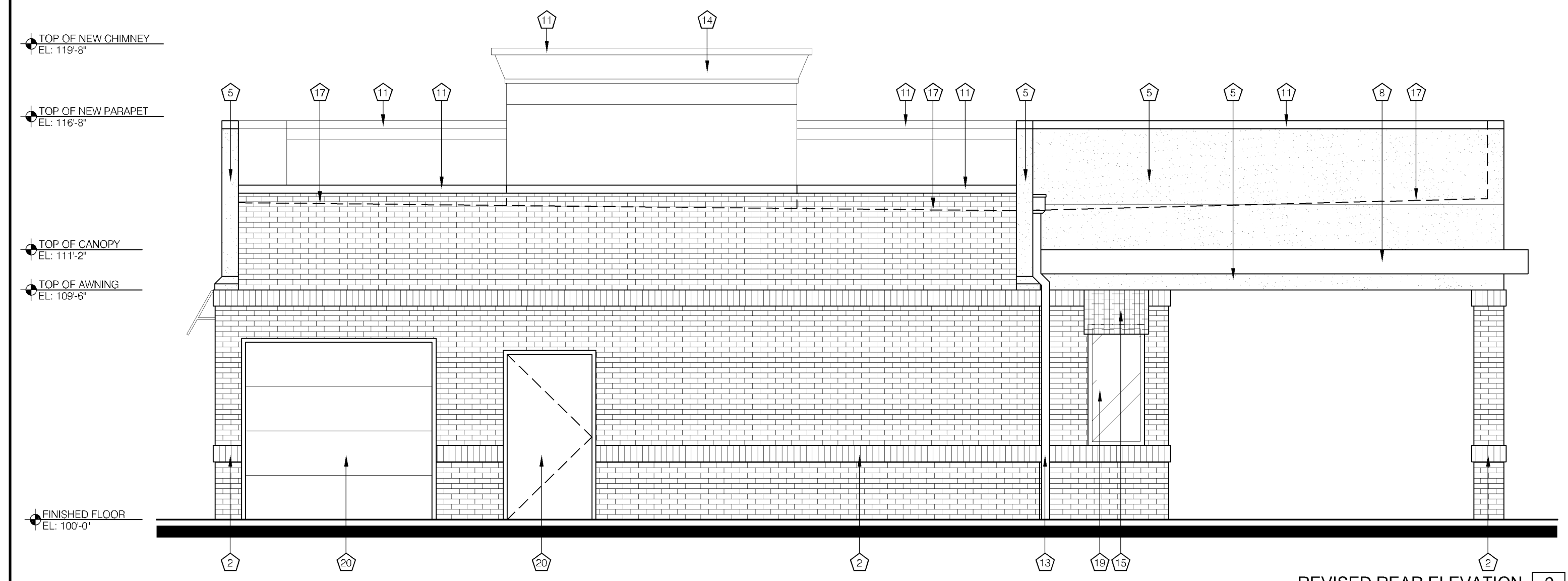
- 1 SIMULATED STONE - MFR: OWENS CORNING - STYLE: COUNTRY LEDGE
- 2 STONE - WET STACK - COLOR: CHARDONNAY 2006 - SUPPLIER: OWENS CORNING - GROUT: GREY
- 3 THE EXISTING BRICK TO REMAIN, PROTECT DURING CONSTRUCTION.
- 4 NOT USED
- 5 NOT USED
- 6 CONTRACTOR TO INSTALL TRADITIONAL GEMENT STUCCO AT THIS LOCATION.
- 7 NEW DISPLAY / SIGN BOARDS ATTACHED TO BUILDING AT THIS LOCATION. SEE REVISED FLOOR PLAN FOR LIGHT FIXTURE SPECIFICATION. CONTRACTOR TO USE EXISTING ELECTRICAL CIRCUITS.
- 8 CONTRACTOR TO INSTALL METAL EYEBROW AT THIS LOCATION. MFR: UNIA-CLAD - STYLE: 040 ALUMINUM - COLOR: MATTE BLACK - FINISH: KYNAR 500 - VENDOR: NU LOOK EXTERIORS. INSTALL STRIP LIGHTING ON METAL EYEBROW. MFR: MORGAN HORSE - STYLE: LED-FLEX WITH BLACK TRACK - MODEL: LED-MH-120V-EB (BLUE LED) - VENDOR: HJC - NOTE: MUST BE INSTALLED PER MANUFACTURERS REQUIREMENTS
- 9 CONTRACTOR TO INSTALL METAL CANOPY. MFR: UNIA-CLAD - STYLE: 040 ALUMINUM - COLOR: CLEAR ANODIZED SATIN - VENDOR: NU LOOK EXTERIORS
- 10 CONTRACTOR TO INSTALL METAL PANEL - MFR: ALPOLIC - STYLE: 3MM COLOR: DQ RED - NOTE: MUST BE INSTALLED HORIZONTALLY. VENDOR: NU LOOK EXTERIORS
- 11 NOT USED
- 12 CONTRACTOR TO INSTALL METAL CAP FLASHING / COPING / FLASHING - MFR: UNIA-CLAD - MATL: 24 GA. STEEL - COLOR: ALMOND - FINISH: KYNAR 500
- 13 NOT USED
- 14 CONTRACTOR TO INSTALL NEW METAL SCUPPER BOXES / OVERFLOW SCUPPER / DOWN SPOUTS AT THIS LOCATION. MFR: UNIA-CLAD - MATL: 24 GA. STEEL - COLOR: ALMOND - FINISH: KYNAR 500
- 15 CONTRACTOR TO INSTALL TRADITIONAL STUCCO CHIMNEY CAP AT THIS LOCATION (SEE WALL SECTIONS)
- 16 NEW FABRIC AWING AT THIS LOCATION. AWING TO MEET IDO SPECIFICATIONS. SUPPLIER: COOL PLANET AWING COMPANY. COLOR: JOCKEY RED. FRAME FINISH: SATIN CLEAR ANODIZED. SERIES: SUNBRELLA. AWINGS ARE FIELD MEASURED TO FIT. PRODUCT: 1" SQUARE ALUMINUM TUBE. WELD ALL JOINTS AND GRIND SMOOTH.
- 17 CONTRACTOR TO INSTALL NEW SIGNAGE AT THIS LOCATION. CONTRACTOR IS TO RE-USE EXISTING CIRCUITRY.
- 18 LINE OF ROOF BEYOND (SHOWN HIDDEN). SEE SECTIONS AND ROOF PLAN.
- 19 THE EXISTING SOLARLUM STRUCTURE IS TO REMAIN. PROTECT DURING DEMOLITION AND CONSTRUCTION.
- 20 EXISTING ALUMINUM STORE FRONT WINDOW / DOOR SYSTEM TO REMAIN AT THIS LOCATION.
- 21 CONTRACTOR TO PAINT THE EXISTING METAL DOOR - MFR: BENJAMIN MOORE - COLOR: SANDY BROWN 1045 - VERIFY PRIMER / FINISH COAT WITH MANUFACTURER



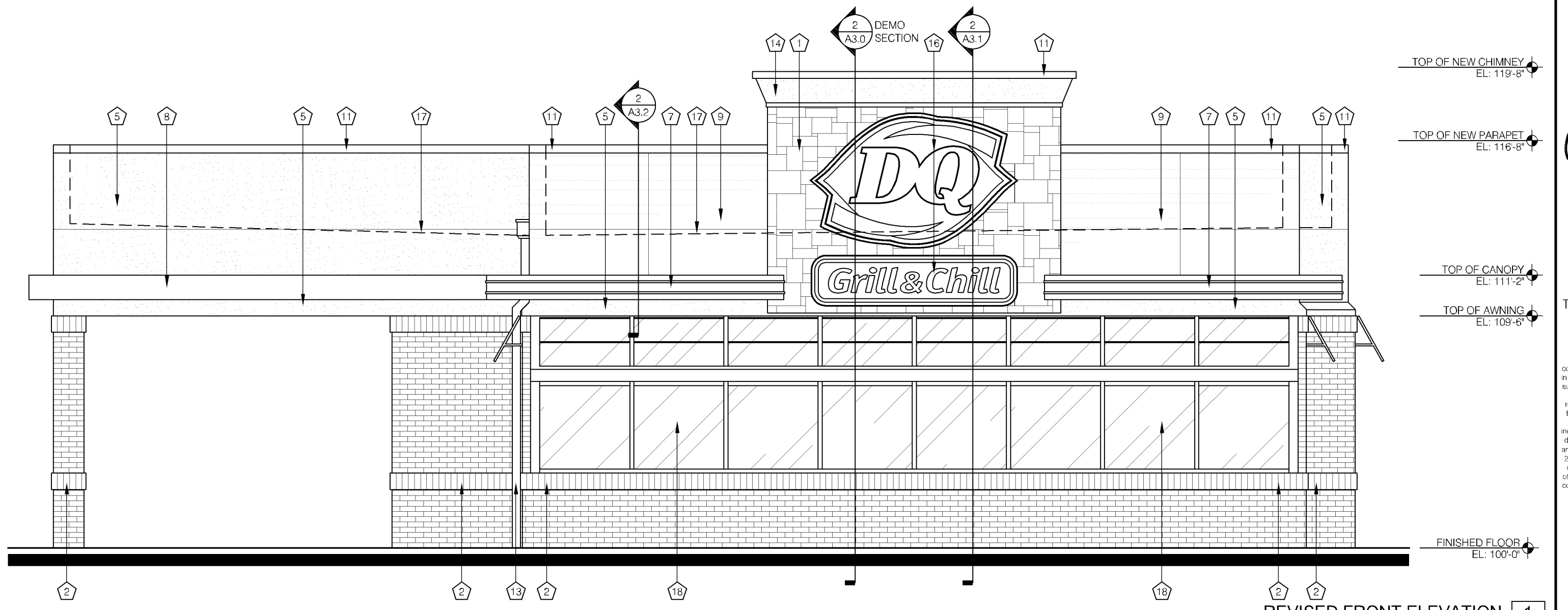
REVISED LEFT ELEVATION 4
SCALE 1/4" = 1'-0" A2.0



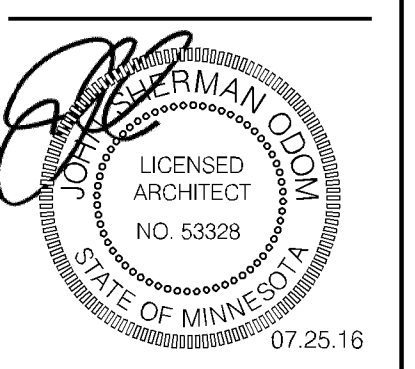
REVISED RIGHT ELEVATION 3
SCALE 1/4" = 1'-0" A2.0



REVISED REAR ELEVATION 2
SCALE 1/4" = 1'-0" A2.0



REVISED FRONT ELEVATION 1
SCALE 1/4" = 1'-0" A2.0



MINNESOTA LICENSE NUMBER: 53328
THIS SEAL IS FOR ARCHITECTURAL INFORMATION ONLY

SPECIAL NOTICES
In the event the client consents to, allows, authorizes or approves changes to any plans, specifications or other construction documents, and these changes are not reviewed by the design professional, then the design professional shall not be responsible for the design of such changes. In addition, the design professional shall not be held liable for any damage, liability or cost (including reasonable attorney's fees and costs of defense) arising from such changes. Copyright © 2016 by John S. Odom, Architect. All rights reserved. No part of this drawing may be reproduced or transmitted in any form or by any means, or stored, processed, or transmitted in any form or by any means, or other systems without the prior written permission of the Architect.

Drawn: JSD Date: 07.25.16

A2.0
REVISED EXTERIOR ELEVATIONS