



150 SOUTH FIFTH STREET, SUITE 1425  
MINNEAPOLIS, MN 55402-1200  
TELEPHONE: 612.339.8601



**Bloomington Subaru**  
500 American Blvd West  
Bloomington, MN 55420

Issued:

Footling and Foundation Package 10.15.2019

Building Shell and Interior Package 12.13.2019

Addendum #1 01.06.2020

S02 Bulletin S02 02.10.2020

S03 Bulletin S03 03.06.2020

S04 Bulletin S04 05.22.2020

**EXTERIOR ELEVATIONS NOTES:**

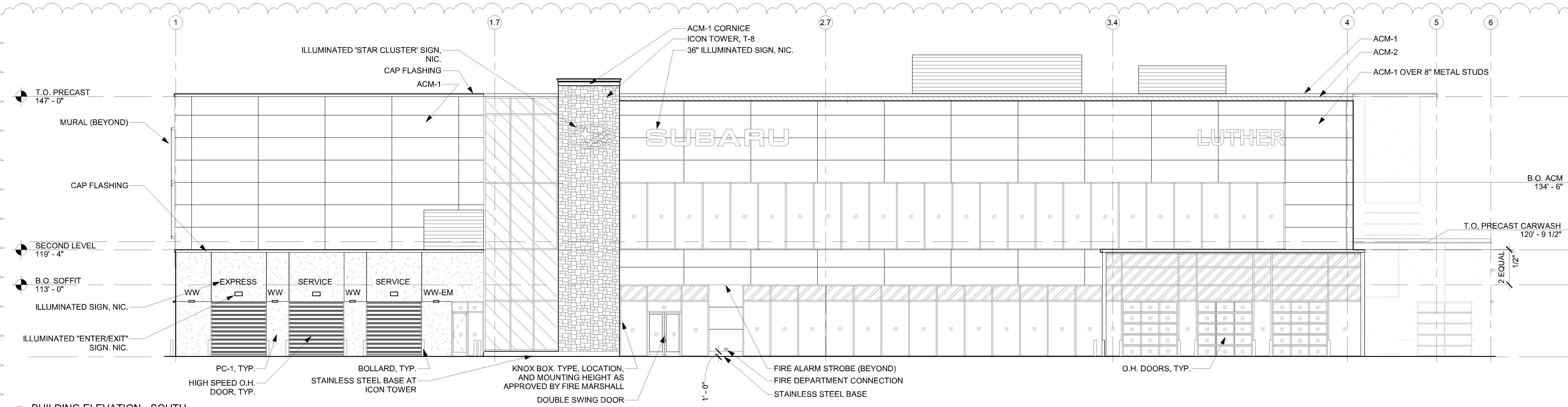
- MEP SHALL VERIFY W/ ARCHITECT IN FIELD ACCEPTABLE LOCATIONS FOR ALL OPENINGS THROUGH EXTERIOR WALLS.
- CURTAINWALL MULLIONS AND ATTACHMENTS TO HAVE CLEAR ANODIZED FINISH.
- CONTRACTOR SHALL PROVIDE POWER, BLOCKING, AND DATA (AS REQUIRED) FOR ALL ILLUMINATED SIGNS.

**EXTERIOR MATERIALS KEY**

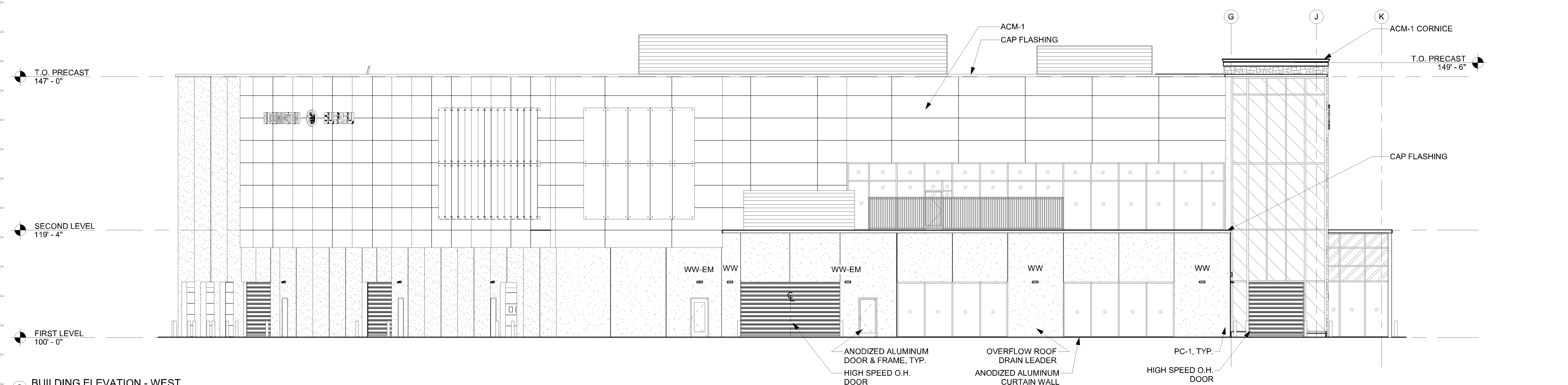
- ACM-1 ALUMINUM COMPOSITE MATERIAL: 'TBX SILVER METALLIC' BY ALPOLIC.
- ACM-2 ALUMINUM COMPOSITE MATERIAL: 'S48 BLUE' BY ALPOLIC.
- COR-1 CORRUGATED METAL PANEL: UNA-CLAD VR-CLASSIC OMEGA, KYNAR 500 / HYLAR 5000 FLUOROCARBON STEEL CHARCOAL GRAY.
- MECHANICAL SCREEN WALL: UNA-CLAD KYNAR 500 FLUOROCARBON STEEL CITYSCAPE.
- PC-1 12" INSULATED PRECAST WALL PANELS, INTEGRALLY COLORED 'CHARCOAL' WITH 'WATER-WASHED' FINISH @ EXPOSED EXTERIOR LOCATIONS.
- SPANDREL INSULATED GLAZING
- TRANSLUCENT INSULATED GLAZING
- TRANSPARENT INSULATED GLAZING
- T-8 NATURAL SLATE TILE (EXTERIOR INSTALLATION): 'CAMERA SLATE' PATTERN #1, 'SHADOW GREY', 1/4" MIN THICKNESS/NATURAL CLEFT FACE AND GAGED BACK. SEE PROJECT MANUAL SECTION 093033 'STONE TILING'.
- ALUMINUM RAILING

**EXTERIOR FINISH KEY**

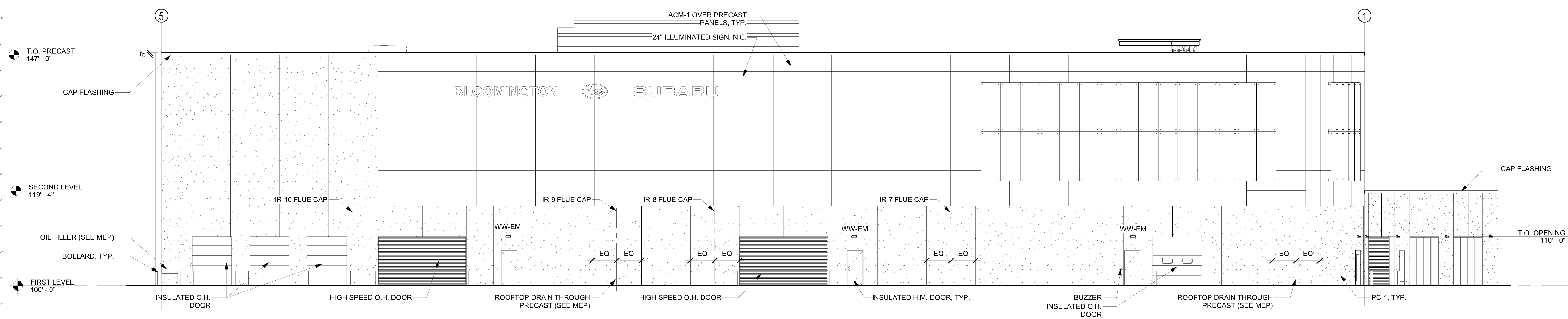
- CAP FLASHING: PREFINISHED METAL: UNA-CLAD VR-CLASSIC OMEGA, KYNAR 500 / HYLAR 5000 FLUOROCARBON STEEL CHARCOAL GRAY.
- BOLLARDS: SEE CIVIL FOR SPECIFICATIONS.
- WW: WALL MOUNTED EXTERIOR LIGHT FIXTURE. SEE CIVIL FOR SPECIFICATIONS.
- WW-EM: WALL MOUNTED EXTERIOR LIGHT FIXTURE WITH EMERGENCY BATTERY BACK-UP. SEE CIVIL FOR SPECIFICATIONS.



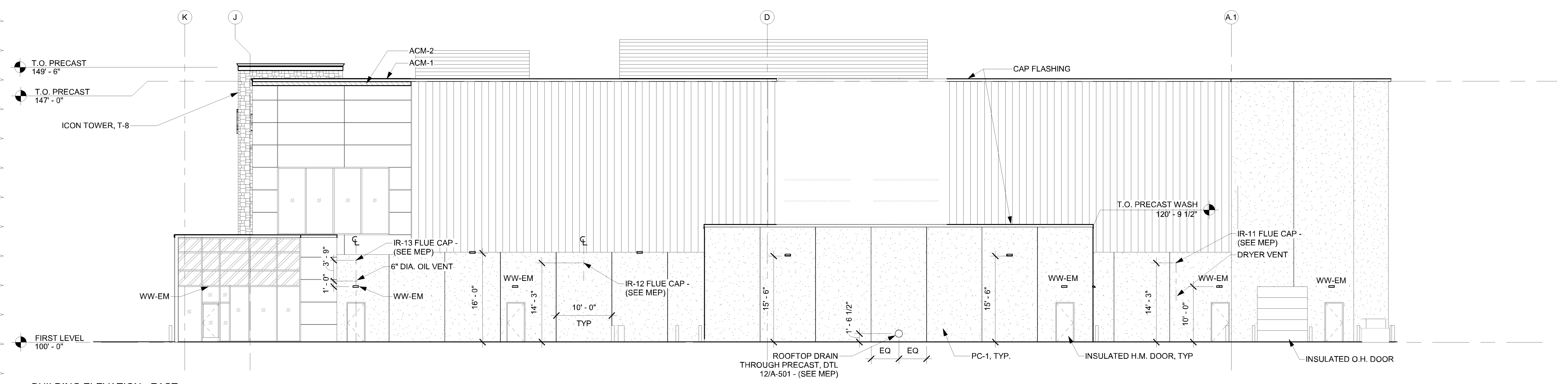
1 BUILDING ELEVATION - SOUTH  
3/32" = 1'-0"



2 BUILDING ELEVATION - WEST  
3/32" = 1'-0"



3 BUILDING ELEVATION - NORTH  
3/32" = 1'-0"



4 BUILDING ELEVATION - EAST  
3/32" = 1'-0"

THIS SHEET MAY BE A REDUCED COPY. THE HATCHED BAR ABOVE IS 1" LONG ON A FULL SIZE SHEET. DRAWING SCALES APPLY TO FULL SIZE SHEETS.

I hereby certify that this plan, specification, or report was prepared by me or under my direct supervision and that I am a duly Licensed Architect under the laws of the state of Minnesota.

Signature: *Jeremy Wolaczewski*

Printed Name: Jeremy Wolaczewski  
Date: 01.06.20 License Number: 51943

Sheet Title  
**EXTERIOR ELEVATIONS**

Sheet Number  
Date: 05.22.2020  
Comm No: 2571  
**A-201**  
© 2020