

20 01-027-24 11 0008  
DRFC METRO LLC  
7101 78TH ST W #100  
BLOOMINGTON MN 55439

20 06-027-23 23 0641  
BCS GD WEST LLC  
2737 FAIRVIEW AVE  
ROSEVILLE MN 55113

20 01-027-24 11 0009  
DRFC METRO LLC  
7101 78TH ST W #100  
BLOOMINGTON MN 55439

20 06-027-23 23 0645  
BLMGTN CENTRAL STATION HOTEL  
C/O MCGOUGH DEVELOPMENT LLC  
2737 FAIRVIEW AVE N  
ST PAUL MN 55113

20 01-027-24 11 0010  
DRFC METRO LLC  
7101 78TH ST W #100  
BLOOMINGTON MN 55439

20 06-027-23 23 0646  
LMC BLOOMINGTON HOLDINGS LLC  
C/O LENNAR MULTIFAM COMM LLC  
1300 E WOODFIELD RD #650  
SCHAUMBURG IL 60173

20 01-027-24 11 0014  
DRFC METRO LLC  
7101 78TH ST W #100  
BLOOMINGTON MN 55439

20 06-027-23 23 0647  
BCS MANAGEMENT LLC  
2737 FAIRVIEW AVE N  
ST PAUL MN 55113

20 06-027-23 21 0014  
MINNEAPOLIS ES HOTEL LLC  
545 E JOHN CARPENTER FREEWAY  
IRVING TX 75062

20 06-027-23 24 0006  
BLMGTN HOTEL VENTURES LLC  
7900 INTERNATIONAL DR #155  
BLOOMINGTON MN 55425

20 06-027-23 22 0003  
ARC HOSP PORTFOLIO I OWN LLC  
3950 UNIVERSITY DR #301  
FAIRFAX VA 22030

20 06-027-23 24 0007  
BLMGTN HOTEL VENTURES LLC  
7900 INTERNATIONAL DR #155  
BLOOMINGTON MN 55425

20 06-027-23 22 0004  
INTERNATL PLAZA PTNERS 2 LLC  
ATTN ANDREW WEBB  
7900 INTERNATIONAL DR # 150  
MINNEAPOLIS MN 55425

20 06-027-23 24 0011  
TWO APPLETREE LLC  
5100 EDINA INDUSTRIAL BLVSD  
EDINA MN 55439

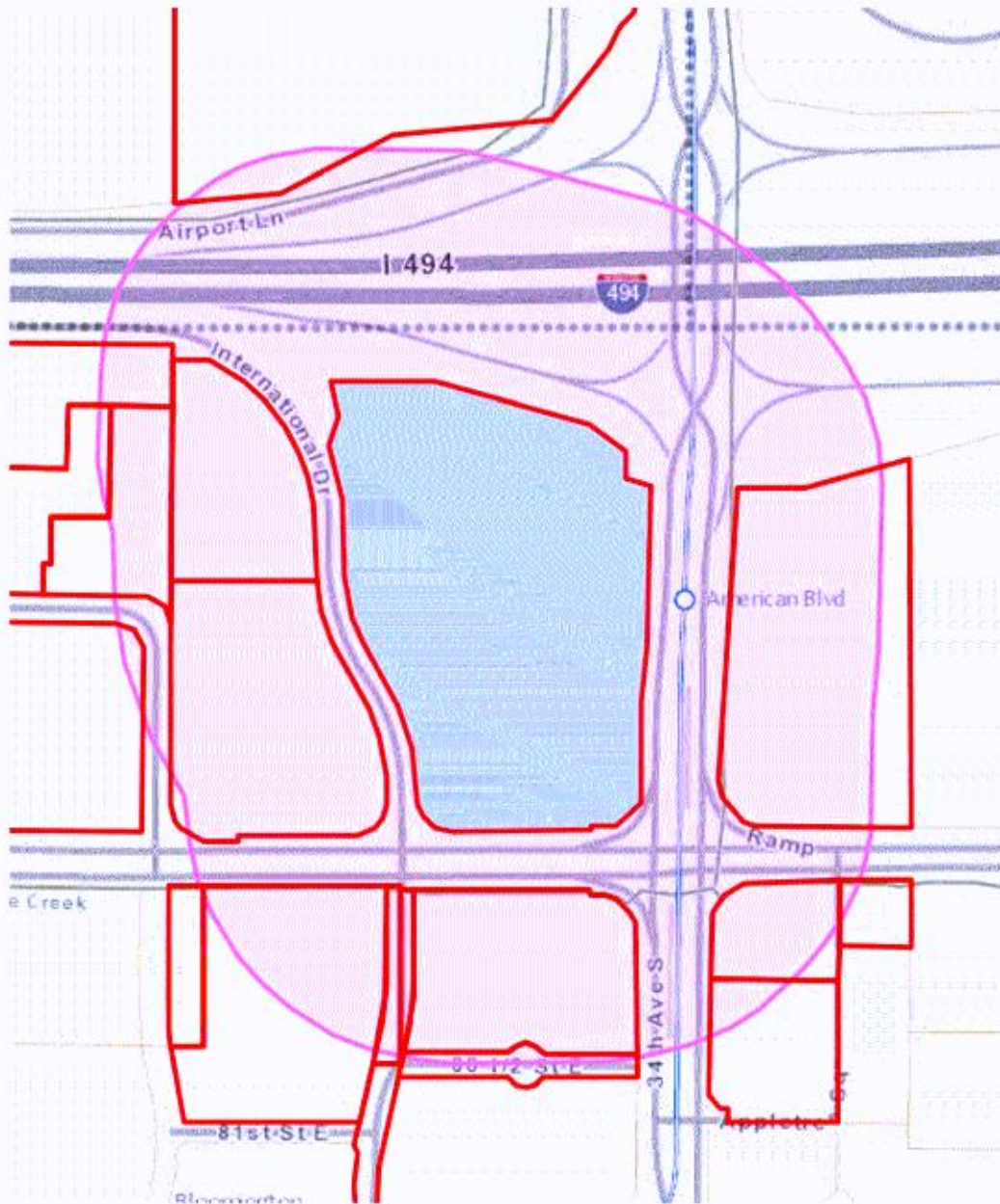
20 06-027-23 22 0006  
AIRPORT CONSTRUCTION OF MN  
7901 INTERNATIONAL DR  
BLOOMINGTON MN 55425

43 31-028-23 22 0001  
METRO AIRPORT COMMISSION  
6040 28TH AVE S  
MINNEAPOLIS MN 55450

20 06-027-23 23 0634  
BCS MANAGEMENT LLC  
2737 FAIRVIEW AVE N  
ST PAUL MN 55113


20 06-027-23 23 0636  
BCS MANAGEMENT LLC  
C/O MCGOUGH DEVELOPMENT LLC  
2737 FAIRVIEW AVE N  
ST. PAUL MN 55113

# City of Bloomington Notification Map



**Case PL2020-194**

**Address: 7901 International Drive**

-  Notification Boundary (500 feet)
-  Subject Property/Properties
-  Notified Properties

