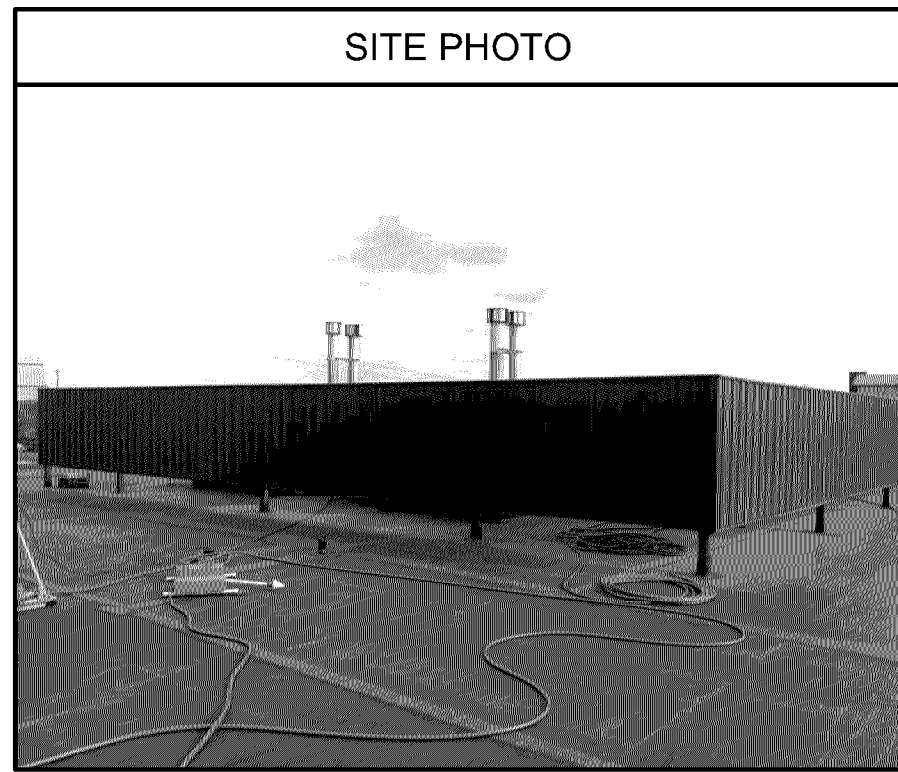




APPROVED
ZONING REVIEW ONLY
NMJ 03/16/2017

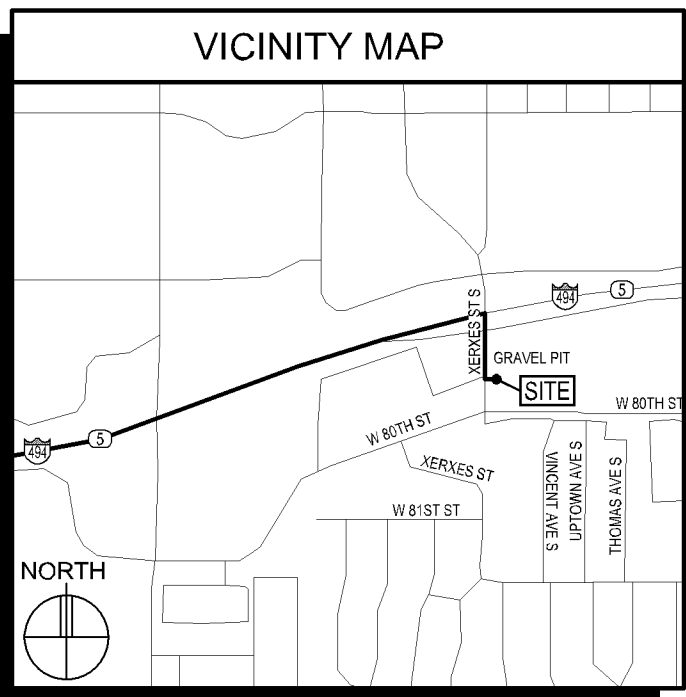
MIN GRAVEL PIT LTE ADD 850 PCS

SITE PHOTO



GENERAL NOTES

- In the event that Special Inspections are not performed in compliance with the contract terms, bid specifications and/or specified form, the General Contractor will be liable for all damages, construction performance, failures, and corrective actions related to the same.
- The following general notes shall apply to drawings and govern unless otherwise noted or specified.
- The work delineated in these drawings and described in the specifications shall conform to codes, standards and regulations that have jurisdiction in the state of MINNESOTA, and the city of BLOOMINGTON.
- Requirements and regulations pertaining to R.F. safety codes and practices must be incorporated in the work even though they may not be listed individually and separately in either the drawings or the specifications.
- Compare field conditions with architectural and engineering drawings. Any discrepancies shall be directed to the Architect for clarification prior to fabrication and/or construction. Submit necessary shop drawings prior to fabrication for approval by the Architect. No information or details on these sheets may be used without the permission of the owner, or the architect.
- Do not scale drawings! 11" x 17" drawings to scale 24" x 36" drawings scale multiply by 2
- Unless otherwise shown or noted, typical details shall be used where applicable.
- Details shall be considered typical at similar conditions.
- Safety measures: The contractor shall be solely and completely responsible for the conditions of the job site, including safety of the persons and property and for independent engineering reviews of these conditions. The Architect's or Engineers' job site review is not intended to include review of the adequacy of the contractor's safety measures.
- Within these plans and specifications, "Owner" implies VERIZON WIRELESS.
- The work is the responsibility of the general contractor unless noted otherwise.
- The terms "contractor" and "g.c." refer to the owner's general contractor and the general contractor's sub-contractors. It is the general contractor's responsibility to determine the division of work among sub-contractors.
- The general contractor is responsible in obtaining necessary public and private underground utility locate services prior to start of excavating / construction.



SITE DIRECTIONS

DIRECTIONS FROM BLOOMINGTON RNC:
TAKE US-169 NORTH TO I-494. TAKE I-494 EAST TO XERXES AVENUE. TAKE XERXES AVENUE SOUTH TO THE SITE ON THE EAST SIDE OF THE ROAD.

PROJECT INFORMATION

SITE NAME: MIN GRAVEL PIT
PROJECT NUMBER: 20161462361
SITE ADDRESS: 7901 XERXES AVENUE SOUTH BLOOMINGTON, MN 55431
COUNTY: HENNEPIN
LATITUDE: "X" & "4TH" SECTOR - N44° 51' 34.65" (NAD83)
"Y" & "Z" SECTOR - N44° 51' 34.33" (NAD83)
LONGITUDE: "X" & "4TH" SECTOR - W93° 19' 05.16" (NAD83)
"Y" & "Z" SECTOR - W93° 19' 02.71" (NAD83)
GROUND ELEVATION: 858.5' AMSL (NAVD88)
ANTENNA TIP HEIGHT: 47' AGL
ANTENNA CENTERLINE HEIGHT: 45' AGL
STRUCTURE HEIGHT: 48' AGL
OVERALL STRUCTURE HEIGHT: 49' AGL (FIELD VERIFY)
GENERATOR ON SITE: NO
TOWER BUILT: N/A
BASED ON SMCO DATED: 11-17-16
PROP. CABLE RUNS:
"X" SECTOR = (1) 6RRU HYBRID LINES @ 195'
(2) 7/8" COAX @ 195'
"Y" SECTOR = (1) 6RRU HYBRID LINES @ 235'
(2) 7/8" COAX @ 235'
"Z" SECTOR = (1) 6RRU HYBRID LINES @ 240'
(2) 7/8" COAX @ 240'
"4TH" SECTOR = (1) 6RRU HYBRID LINES @ 215'

PROJECT DESCRIPTION: REMOVE (14) EX. ANTENNAS & EX. MOUNTS. REPLACE WITH (15) PROPOSED ANTENNAS ON PROPOSED MOUNTS. REMOVE ALL FEED LINES & REPLACE WITH (4) 6RRU HYBRID CABLES AND (6) 7/8" COAX FROM THE VZW. EQUIPMENT ROOM, THROUGH THE EX. BUILDING TO THE ROOF. ADD PVC SLEEPERS TO SUPPORT FEED LINES ON ROOF. REMOVE EX. CABLE ENCLOSURES IN STAIRWELL AND REPAIR/PATCH EX. WALLS. ADD DOGHOUSE AT ROOF PENETRATION. RELOCATE (1) MAIN ROOF DIST. BOXES & ADD (6) MAIN DIST. BOXES (1/SECTOR AND 3 IN THE EQUIP. ROOM RACKS) REMOVE ALL TTA'S AND DIPLEXERS. ADD (16) RRUS PER ANTENNA KEY.

SHEET INDEX

SHEET	SHEET DESCRIPTION
T-1	PROJECT INFORMATION, MAPS, DIRECTIONS, AND SHEET INDEX
A-1	ROOF PLAN & FLOOR PLANS
A-2	SECTOR PLANS
A-3	EX. ANTENNA, COAX & TTA KEY & MISC. DETAILS
A-4	PROP. ANTENNA, COAX & TTA KEY
A-5	PROP. ANT., COAX & TTA KEY, ELEVATIONS & EQUIP. ROOM PLAN
A-6	MOUNTING ELEVATIONS
A-7	MOUNTING DETAILS
A-8	BUILDING ELEVATIONS
A-9	DEMOLITION PLANS AND MISC. PHOTOS
A-10:A-11	MISC. PHOTOS

ISSUE SUMMARY

REV.	DESCRIPTION	SHEET/DETAIL
A	ISSUED FOR REVIEW 12-23-16	ALL
B	ISSUED FOR PERMITTING/OWNER SIGNOFF 01-09-17	ALL

CONTACTS

LESSOR: GOLDMARK PROPERTY MANAGEMENT
7901 XERXES AVENUE SOUTH, SUITE 200
BLOOMINGTON, MN 55431
LESSEE: VERIZON WIRELESS
10801 BUSH LAKE ROAD
BLOOMINGTON, MN 55438
STEVE EDWARDS (612) 720-6377
ARCHITECT: DESIGN 1 OF EDEN PRAIRIE, LLC.
9973 VALLEY VIEW ROAD
EDEN PRAIRIE, MN 55344
(952) 903-9299
STRUCTURAL ENGINEER: HERZOG ENGINEERING
530 NORTH 3RD STREET, SUITE 230
MINNEAPOLIS, MN 55401
(612) 844-1234 (JOSH HERZOG)

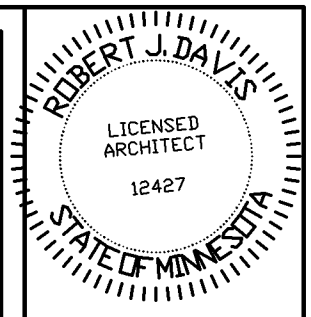
VERIZON WIRELESS DEPARTMENTAL APPROVALS

JOB TITLE	NAME	DATE
RF ENGINEER	MIHAELA OXLEY	01-03-17
CONSTRUCTION ENGINEER	DOUGLAS FREDERICK	01-04-17

LESSOR / LICENSOR APPROVAL

SIGNATURE	PRINTED NAME	DATE

LESSOR / LICENSOR: PLEASE CHECK THE APPROPRIATE BOX BELOW
 NO CHANGES. CHANGES NEEDED. SEE COMMENTS ON PLANS.



I hereby certify that this plan, specification, or report was prepared by me or under my direct supervision and that I am a duly Licensed Architect under the laws of the State of Minnesota.

Print Name: ROBERT J. DAVIS

Signature: *Robert J. Davis* License #: 12427

Date: 01-09-17



9973 VALLEY VIEW RD.
EDEN PRAIRIE, MN 55344
(952) 903-9299
WWW.DESIGN1EP.COM



10801 BUSH LAKE ROAD
BLOOMINGTON, MN 55438
(612) 720-6377

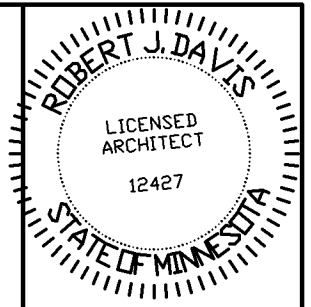
PROJECT
20161462361
LOC. CODE # 140079

MIN GRAVEL PIT LTE ADD 850 PCS

7901 XERXES AVENUE S
BLOOMINGTON, MN 55431

SHEET CONTENTS:
CONTACTS
ISSUE SUMMARY
SHEET INDEX
DEPARTMENTAL APPROVALS
LESSOR APPROVAL
PROJECT INFORMATION
VICINITY MAP
GENERAL NOTES

DRAWN BY:	SJD
DATE:	11-21-16
CHECKED BY:	TJR
REV. A	12-23-16
REV. B	01-09-17



I hereby certify that this plan, specification, or report was prepared by me or under my direct supervision and that I am a duly Licensed Architect under the laws of the State of Minnesota.

Print Name: ROBERT J. DAVIS
 Signature: *Robert J. Davis* License#: 12427
 Date: 01-09-17

DESIGN 1
 9973 VALLEY VIEW RD.
 EDEN PRAIRIE, MN 55344
 (952) 903-9299
 WWW.DESIGN1EP.COM

verizon
 10801 BUSH LAKE ROAD
 BLOOMINGTON, MN 55438
 (612) 720-6377

PROJECT
 20161462361
 LOC. CODE # 140079

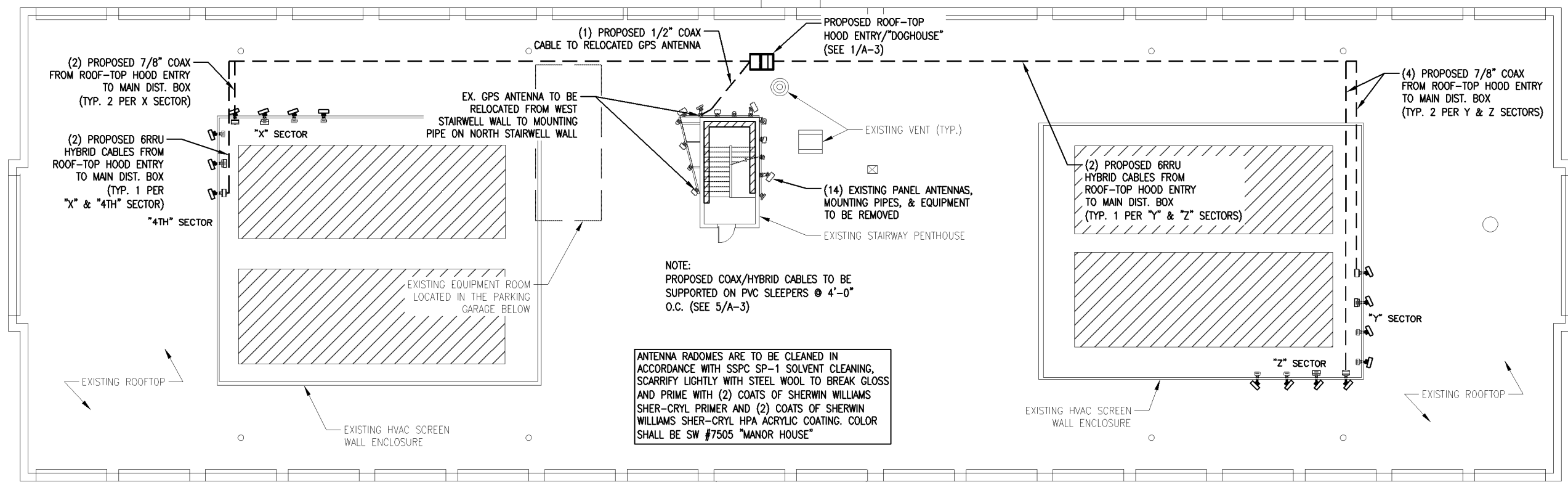
MIN
 GRAVEL PIT
 LTE ADD 850 PCS

7901 XERXES AVENUE S
 BLOOMINGTON, MN 55431

SHEET CONTENTS:
 ROOF PLAN
 FLOOR PLANS

DRAWN BY:	SJD
DATE:	11-21-16
CHECKED BY:	TJR
REV. A	12-23-16
REV. B	01-09-17

A-1

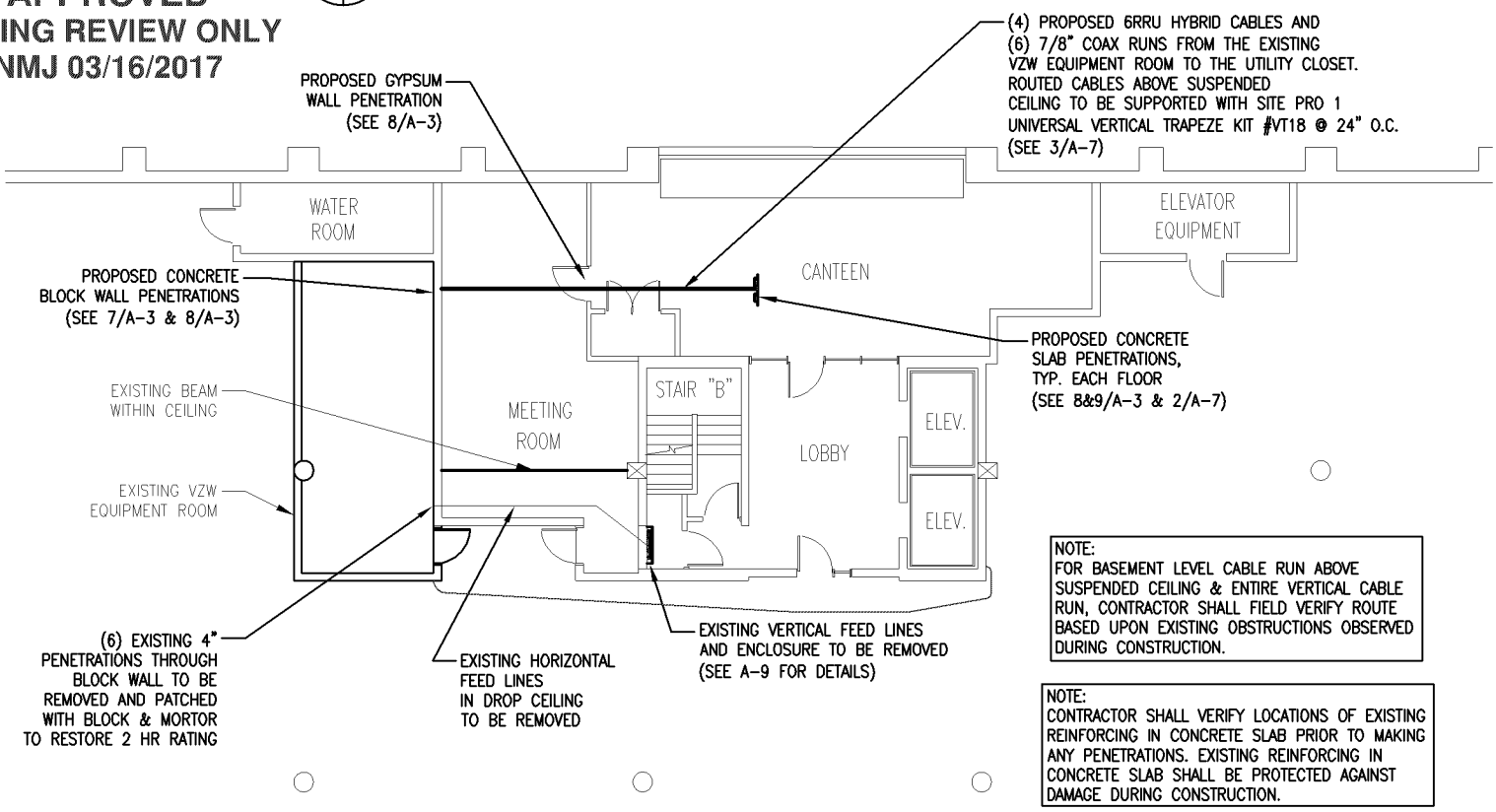


APPROVED ZONING REVIEW ONLY
 NMJ 03/16/2017

1 ROOF PLAN
 SCALE: 1" = 20'-0"

NORTH

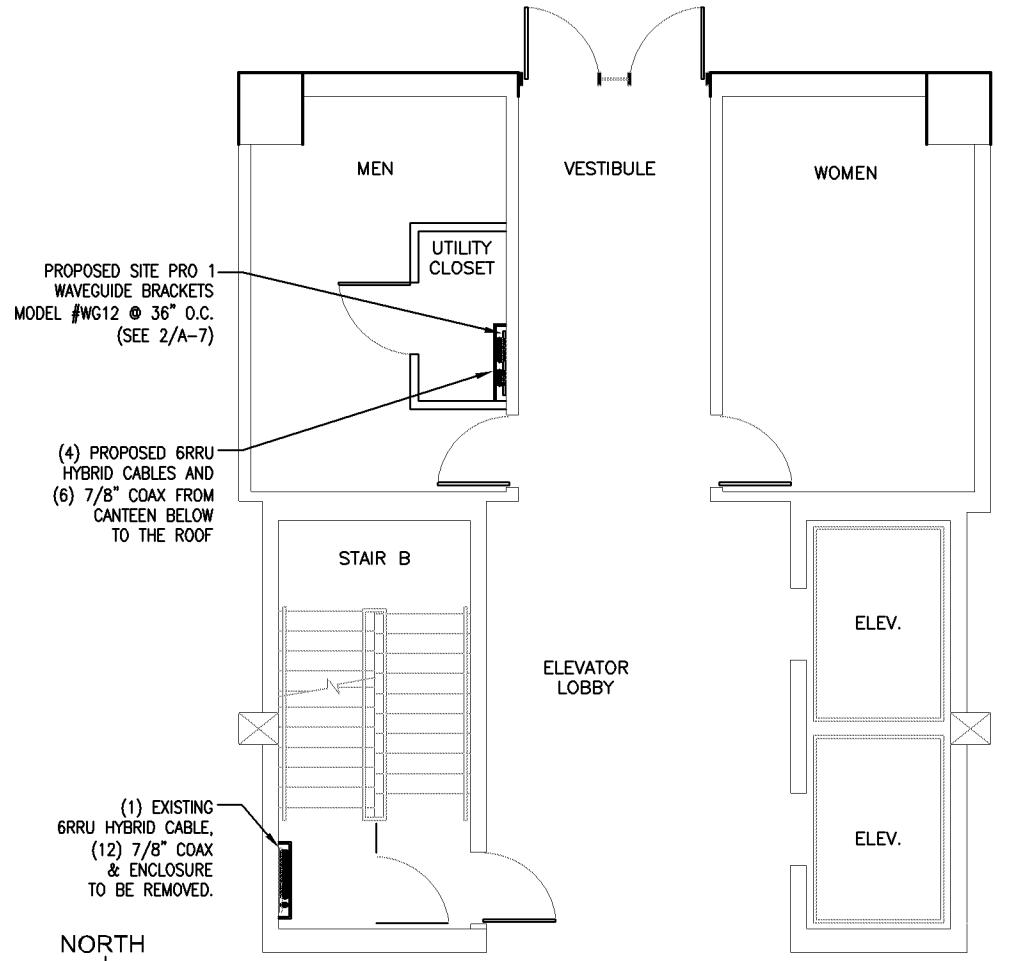
GRAPHIC SCALE



2 BASEMENT/PARKING GARAGE FLOOR PLAN
 SCALE: 1/16" = 1'-0"

NORTH

GRAPHIC SCALE

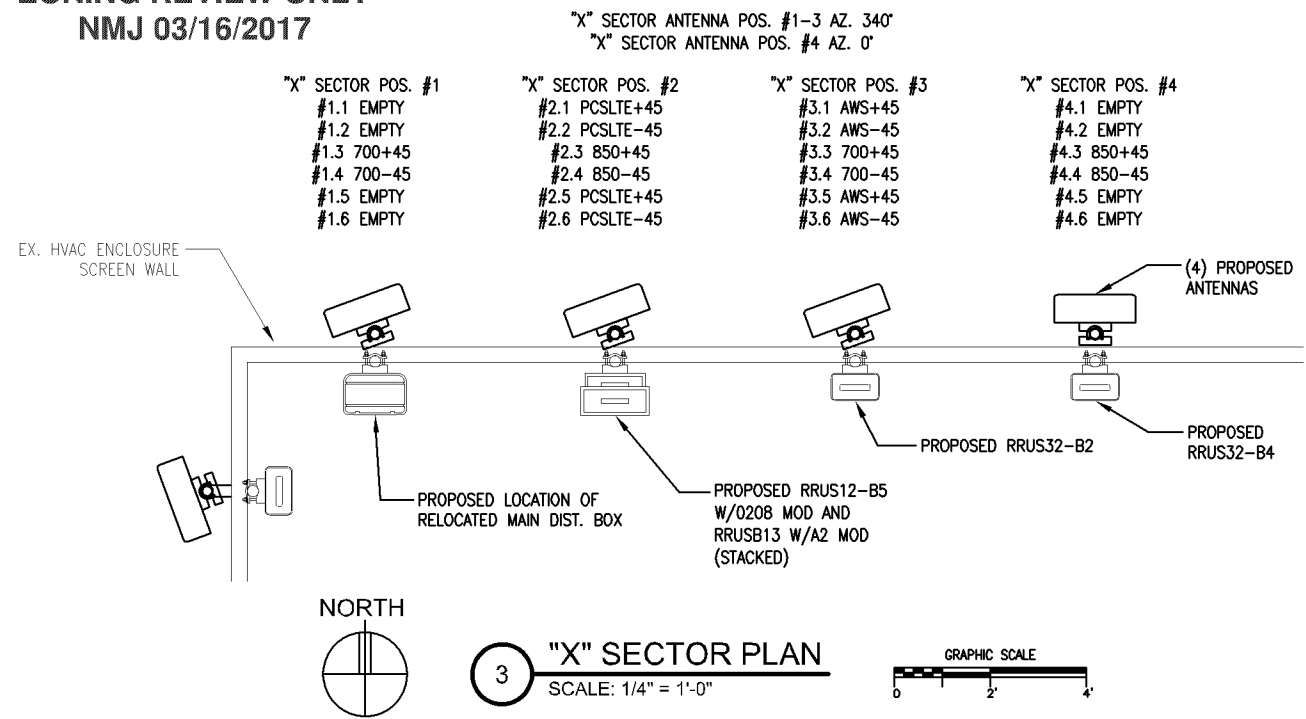


3 FIRST-THIRD FLOOR PLAN
 SCALE: 1/8" = 1'-0"

NORTH

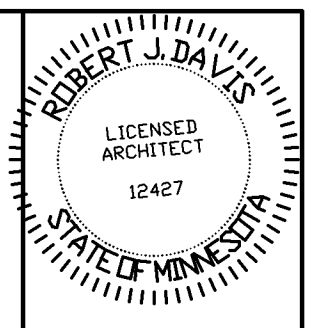
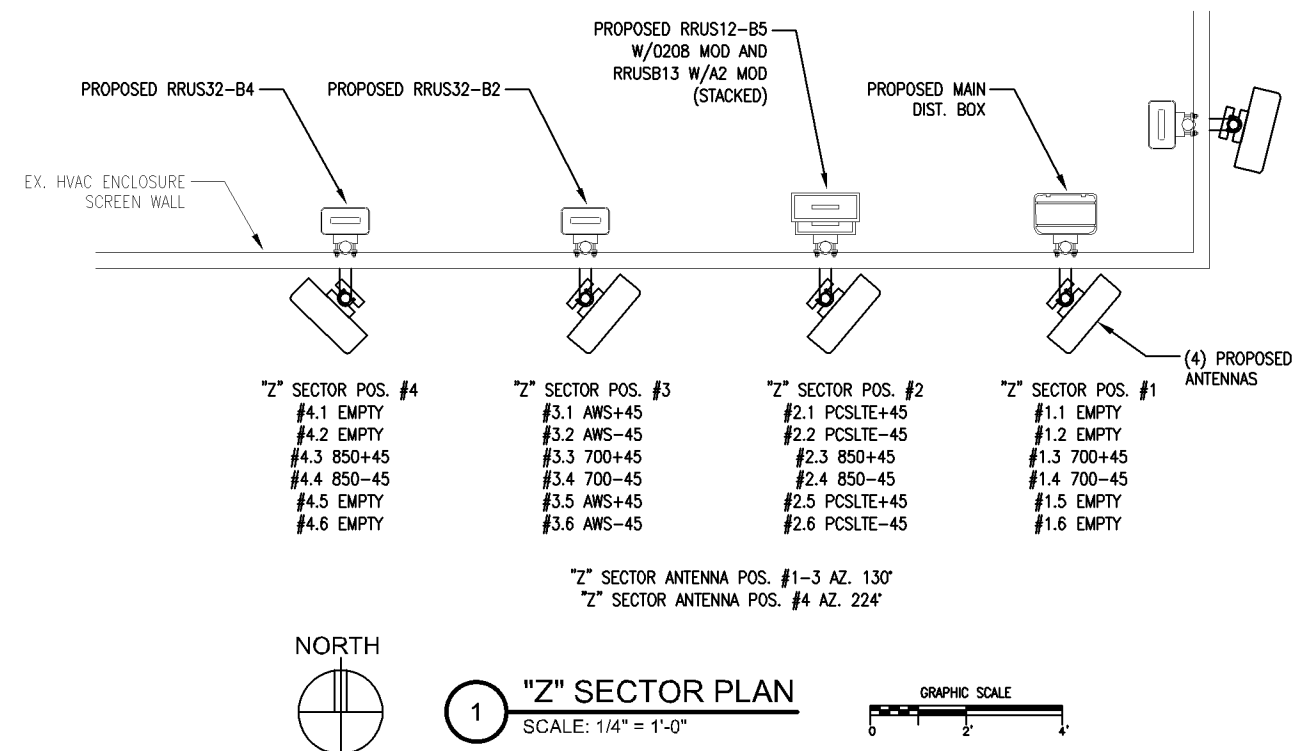
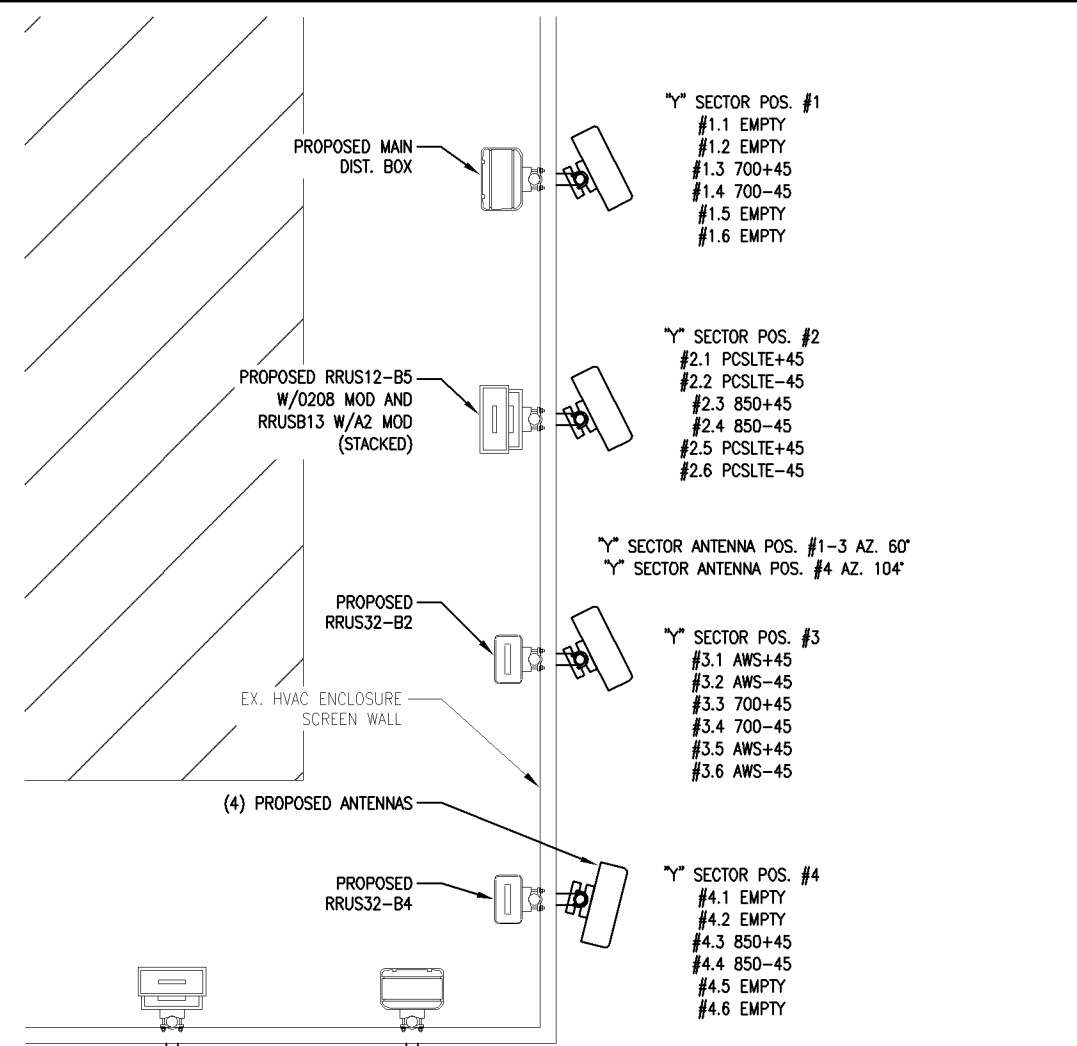
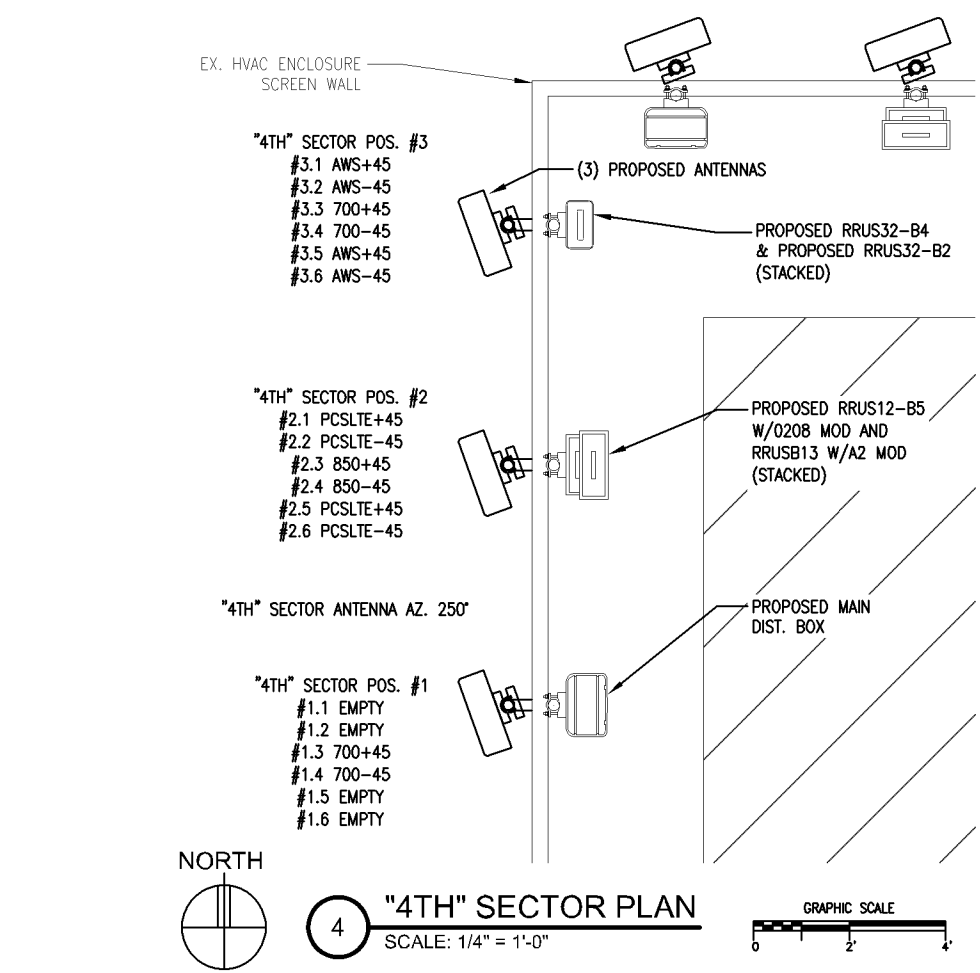
GRAPHIC SCALE

APPROVED
ZONING REVIEW ONLY
NMJ 03/16/2017



ANTENNA RADOMES ARE TO BE CLEANED IN ACCORDANCE WITH SSPC SP-1 SOLVENT CLEANING, SCARRIFY LIGHTLY WITH STEEL WOOL TO BREAK GLOSS AND PRIME WITH (2) COATS OF SHERWIN WILLIAMS SHER-CRYL PRIMER AND (2) COATS OF SHERWIN WILLIAMS SHER-CRYL HPA ACRYLIC COATING. COLOR SHALL BE SW #7505 "MANOR HOUSE"

ANTENNAS/MOUNTING PIPES TO BE LOCATED 3'-0" FROM EX. CORNER OF SCREEN WALL AND 5'-0" O.C. THEREAFTER.



I hereby certify that this plan, specification, or report was prepared by me or under my direct supervision and that I am a duly Licensed Architect under the laws of the State of Minnesota.

Print Name: ROBERT J. DAVIS

Signature: *Robert J. Davis* License#: 12427

Date: 01-09-17

DESIGN 1

9973 VALLEY VIEW RD.
EDEN PRAIRIE, MN 55344
(952) 903-9299
WWW.DESIGN1EP.COM

verizon

10801 BUSH LAKE ROAD
BLOOMINGTON, MN 55438
(612) 720-6377

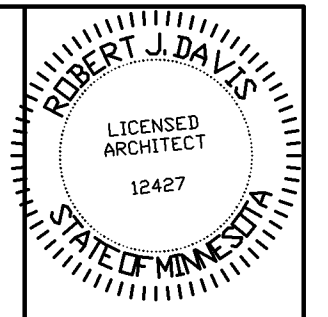
PROJECT
20161462361
LOC. CODE # 140079

MIN
GRAVEL PIT
LTE ADD 850 PCS

7901 XERXES AVENUE S
BLOOMINGTON, MN 55431

SHEET CONTENTS:
SECTOR PLANS

DRAWN BY: SJD
DATE: 11-21-16
CHECKED BY: TJR
REV. A 12-23-16
REV. B 01-09-17



I hereby certify that this plan, specification, or report was prepared by me or under my direct supervision and that I am a duly Licensed Architect under the laws of the State of Minnesota.

Print Name: ROBERT J. DAVIS
 Signature: *Robert J. Davis*
 License #: 12427
 Date: 01-09-17

DESIGN
 9973 VALLEY VIEW RD.
 EDEN PRAIRIE, MN 55344
 (952) 903-9299
 WWW.DESIGN1EP.COM

verizon
 10801 BUSH LAKE ROAD
 BLOOMINGTON, MN 55438
 (612) 720-6377

PROJECT
 20161462361
 LOC. CODE # 140079

MIN
 GRAVEL PIT
 LTE ADD 850 PCS
 7901 XERXES AVENUE S
 BLOOMINGTON, MN 55431

SHEET CONTENTS:
 ANTENNA, COAX & TTA KEY
 COAX ENTRY DETAILS
 DOGHOUSE DETAIL
 SLEEPER DETAIL
 PENETRATION DETAILS

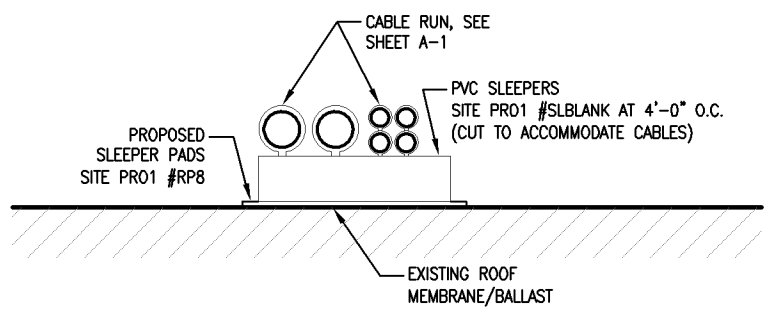
DRAWN BY: SJD
 DATE: 11-21-16
 CHECKED BY: TJR
 REV. A: 12-23-16
 REV. B: 01-09-17

EXISTING ANTENNA KEY													EXISTING COAX KEY						EXISTING TTA KEY						
	AZIMUTH	POSITION	FUNCTION	QTY	MANUFACTURER	MODEL	MOD TYPE	ANTENNA LENGTH	ANTENNA TIP	ANTENNA CENTER	ELEC DOWNTILT	MECH DOWNTILT	STATUS	QTY.	COAX TYPE	MANUFACTURER	MODEL	DIELECTRIC	DIAMETER (INCH)	RUN (FEET)	STATUS	QTY.	MODEL	STATUS	
"X" SECTOR	330°	1.1	TX/RX0	1	CSS	X7C-FR0-440-V	LTE	50.5"	47'	45'	2'	0'	REMOVE	1	MAIN	ANDREW	AVA5RK-50FX	FOAM	7/8"	150'	REMOVE	-	-	-	
	330°	1.2	TX/RX1	-	-	2ND PORT	LTE	-	-	-	-	-	-	1	MAIN	ANDREW	AVA5RK-50FX	FOAM	7/8"	150'	REMOVE	-	-	-	
	330°	2.1	TX/RX0	1	ANTEL	WBX033X20M050	AWS	55.3"	47'	45'	2'	0'	REMOVE	1	RRU	ERICSSON	RRUS-12	FIBER FEED TAIL DIST. BOX TO RRU	-	-	REMOVE	-	-	-	
	330°	2.2	TX/RX1	-	-	2ND PORT	AWS	-	-	-	-	-	-	-	-	-	-	-	-	-	-	-	-		
	0°	3.1	TX/RX0	1	CSS	X7C-465-0	CDMA	50.5"	47'	45'	0'	0'	REMOVE	1	MAIN	ANDREW	AVA5RK-50FX	FOAM	7/8"	150'	REMOVE	-	-	-	
	0°	3.2	TX/RX1	-	-	2ND PORT	CDMA	-	-	-	-	-	-	-	1	MAIN	ANDREW	AVA5RK-50FX	FOAM	7/8"	150'	REMOVE	-	-	-
	0°	4.1	TX/RX0	1	POWERWAVE	7740.00A	PCS	51.5"	47'	45'	2'	0'	REMOVE	1	DIPLEX	CSS	DBC-750	DIPLEXED WITH 850	-	-	REMOVE	1	ADC DD1900 (1900 MHZ)	REMOVE	
0°	4.2	TX/RX1	-	-	2ND PORT	PCS	-	-	-	-	-	-	-	1	DIPLEX	CSS	DBC-750	DIPLEXED WITH 850	-	-	REMOVE	1	ADC DD1900 (1900 MHZ)	REMOVE	
"Y" SECTOR	60°	1.1	TX/RX0	1	CSS	X7C-FR0-440-V	LTE	50.5"	47'	45'	2'	0'	REMOVE	1	MAIN	ANDREW	AVA5RK-50FX	FOAM	7/8"	150'	REMOVE	-	-	-	
	60°	1.2	TX/RX1	-	-	2ND PORT	LTE	-	-	-	-	-	-	1	MAIN	ANDREW	AVA5RK-50FX	FOAM	7/8"	150'	REMOVE	-	-	-	
	60°	2.1	TX/RX0	1	ANTEL	WBX033X20M050	AWS	55.3"	47'	45'	2'	0'	REMOVE	1	RRU	ERICSSON	RRUS-12	FIBER FEED TAIL DIST. BOX TO RRU	-	-	REMOVE	-	-	-	
	60°	2.2	TX/RX1	-	-	2ND PORT	AWS	-	-	-	-	-	-	-	-	-	-	-	-	-	-	-	-		
	104°	3.1	TX/RX0	1	CSS	X7C-465-6	CDMA	50.5"	47'	45'	0'	0'	REMOVE	1	MAIN	ANDREW	AVA5RK-50FX	FOAM	7/8"	150'	REMOVE	-	-	-	
	104°	3.2	TX/RX1	-	-	2ND PORT	CDMA	-	-	-	-	-	-	-	1	MAIN	ANDREW	AVA5RK-50FX	FOAM	7/8"	150'	REMOVE	-	-	-
	104°	4.1	TX/RX0	1	POWERWAVE	7740.00A	PCS	51.5"	47'	45'	3'	0'	REMOVE	1	DIPLEX	CSS	DBC-750	DIPLEXED WITH 850	-	-	REMOVE	1	ADC DD1900 (1900 MHZ)	REMOVE	
104°	4.2	TX/RX1	-	-	2ND PORT	PCS	-	-	-	-	-	-	-	1	DIPLEX	CSS	DBC-750	DIPLEXED WITH 850	-	-	REMOVE	1	ADC DD1900 (1900 MHZ)	REMOVE	
"Z" SECTOR	130°	1.1	TX/RX0	1	CSS	X7C-FR0-440-V	LTE	50.5"	47'	45'	2'	1'	REMOVE	1	MAIN	ANDREW	AVA5RK-50FX	FOAM	7/8"	150'	REMOVE	-	-	-	
	130°	1.2	TX/RX1	-	-	2ND PORT	LTE	-	-	-	-	-	-	1	MAIN	ANDREW	AVA5RK-50FX	FOAM	7/8"	150'	REMOVE	-	-	-	
	130°	2.1	TX/RX0	1	ANTEL	WBX033X20M050	AWS	55.3"	47'	45'	2'	0'	REMOVE	1	RRU	ERICSSON	RRUS-12	FIBER FEED TAIL DIST. BOX TO RRU	-	-	REMOVE	-	-	-	
	130°	2.2	TX/RX1	-	-	2ND PORT	AWS	-	-	-	-	-	-	-	-	-	-	-	-	-	-	-	-		
	224°	3.1	TX/RX0	1	CSS	X7C-480-4D	CDMA	50.5"	47'	45'	0'	0'	REMOVE	1	MAIN	ANDREW	AVA5RK-50FX	FOAM	7/8"	150'	REMOVE	-	-	-	
	224°	3.2	TX/RX1	-	-	2ND PORT	CDMA	-	-	-	-	-	-	-	1	MAIN	ANDREW	AVA5RK-50FX	FOAM	7/8"	150'	REMOVE	-	-	-
	224°	4.1	TX/RX0	1	POWERWAVE	7740.00A	PCS	51.5"	47'	45'	3'	0'	REMOVE	1	DIPLEX	CSS	DBC-750	DIPLEXED WITH 850	-	-	REMOVE	1	ADC DD1900 (1900 MHZ)	REMOVE	
224°	4.2	TX/RX1	-	-	2ND PORT	PCS	-	-	-	-	-	-	-	1	DIPLEX	CSS	DBC-750	DIPLEXED WITH 850	-	-	REMOVE	1	ADC DD1900 (1900 MHZ)	REMOVE	
"4TH" SECTOR	224°	1.1	TX/RX0	1	ANTEL	BXA-171063-8CF-EDIN-2	AWS	48.5"	47'	45'	0'	1'	REMOVE	1	RRU	ERICSSON	RRUS-12	FIBER FEED TAIL DIST. BOX TO RRU	-	-	REMOVE	-	-	-	
	224°	1.2	TX/RX1	-	-	2ND PORT	AWS	-	-	-	-	-	-	1	RRU	ERICSSON	RRUS-12	FIBER FEED TAIL DIST. BOX TO RRU	-	-	REMOVE	-	-	-	
	224°	2.1	TX/RX0	1	CSS	X7C-480-4D	LTE	50.5"	47'	45'	0'	0'	REMOVE	1	MAIN	ANDREW	AVA5RK-50FX	FOAM	7/8"	150'	REMOVE	-	-	-	
	224°	2.2	TX/RX1	-	-	2ND PORT	LTE	-	-	-	-	-	-	1	MAIN	ANDREW	AVA5RK-50FX	FOAM	7/8"	150'	REMOVE	-	-	-	
EXISTING EQUIPMENT TO BE REMOVED: (1) COMMSCOPE 6RRU CABLE RFA1206-24S26-180, (1) COMMSCOPE 2RRU CABLE RFA806-8S25-20 (1) COMMSCOPE 2RRU CABLE RFA806-8S25-40, (1) COMMSCOPE 2RRU CABLE RFA806-8S25-30 (3) RXXDC-1064-PF-48 SECTOR BOX EXISTING EQUIPMENT TO REMAIN: (1) RXXDC-3315-PF-48 DISTRIBUTION BOX														14		JUMPERS	ANDREW	LDF4-50A	FOAM	1/2"	10'	REMOVE	-	-	-

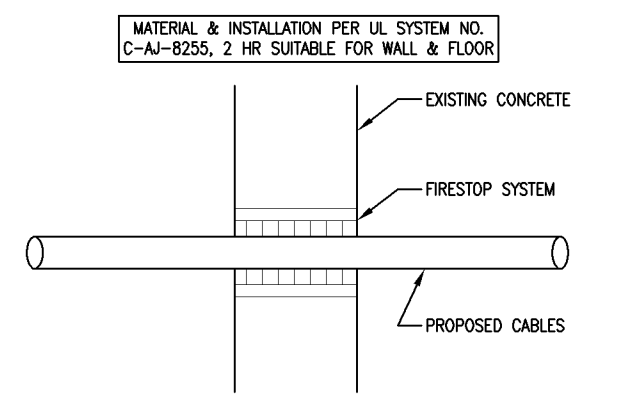
4 ANTENNA KEY
 SCALE: NONE

3 COAX KEY
 SCALE: NONE

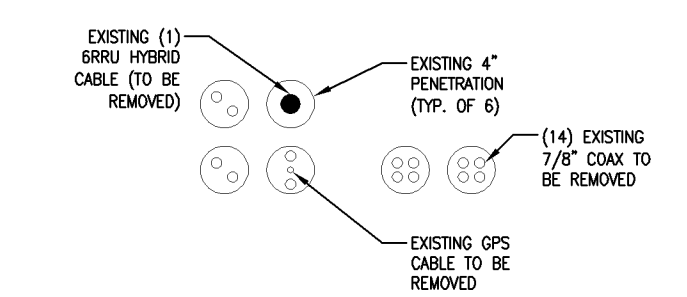
2 TTA KEY
 SCALE: NONE



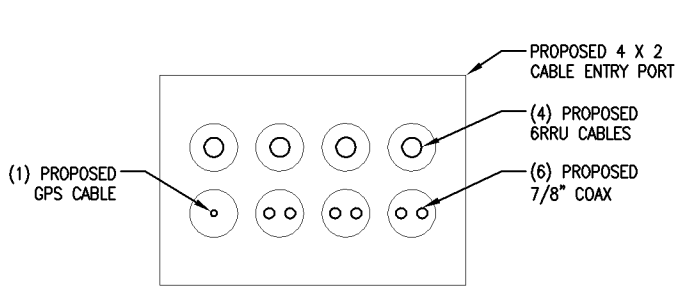
5 SLEEPER DETAIL
 SCALE: 1" = 1'-0"



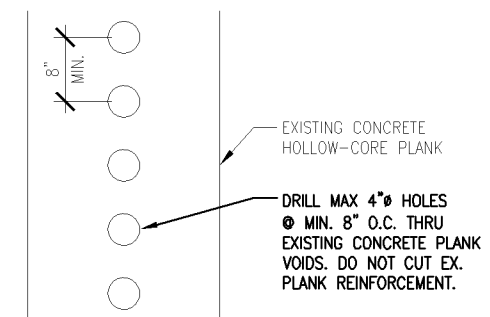
8 WALL PENETRATION DETAIL
 SCALE: 1" = 1'-0"



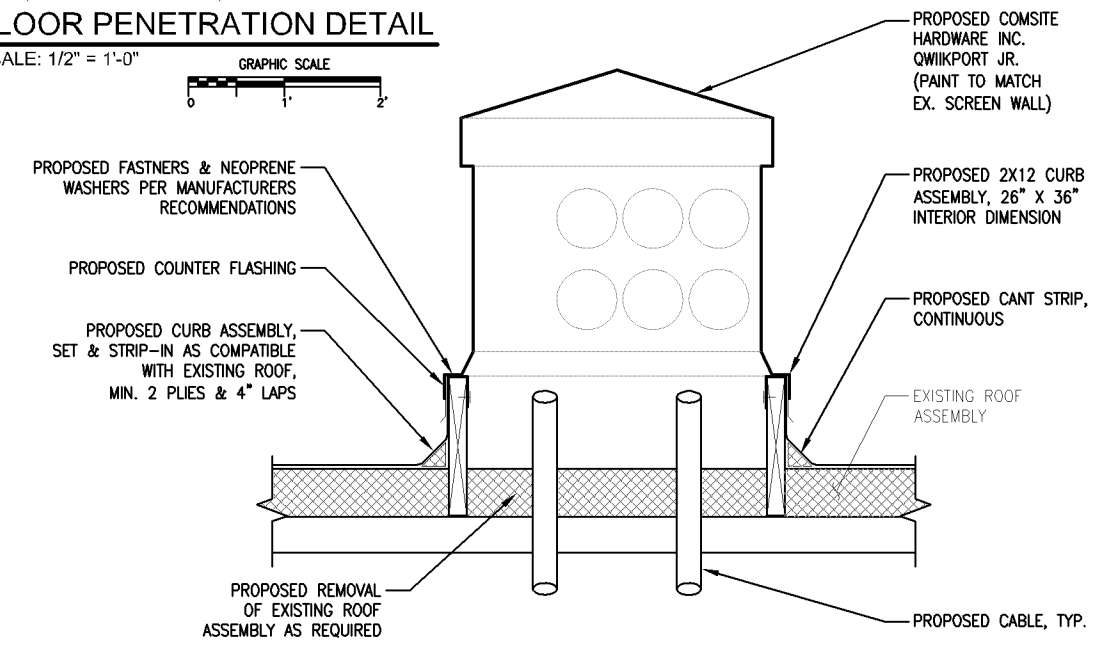
6 EX. COAX ENTRY DETAIL
 SCALE: 3/4" = 1'-0"



7 PENETRATION DETAIL
 SCALE: 3/4" = 1'-0"



9 FLOOR PENETRATION DETAIL
 SCALE: 1/2" = 1'-0"



1 DOGHOUSE DETAIL
 SCALE: 3/4" = 1'-0"

APPROVED
 ZONING REVIEW ONLY
 NMJ 03/16/2017

"4TH" SECTOR	250'	1.1	-	1	JMA	X7CQAP-FR0-445-V	FUTURE	50.5"	47'	45'	0'	0'	PROPOSED	
	250'	1.2	-	-	-	2ND PORT	FUTURE	-	-	-	0'	0'	-	
	250'	1.3	TX0/RX0	-	-	-	3RD PORT	700LTE+45	-	-	-	0'	0'	-
	250'	1.4	TX1/RX1	-	-	-	4TH PORT	700LTE-45	-	-	-	0'	0'	-
	250'	1.5	-	-	-	-	5TH PORT	FUTURE	-	-	-	0'	0'	-
	250'	1.6	-	-	-	-	6TH PORT	FUTURE	-	-	-	0'	0'	-
	250'	2.1	TX0/RX0	1	JMA	X7CQAP-FR0-445-V	PCSLTE+45	50.5"	47'	45'	0'	0'	PROPOSED	
	250'	2.2	TX1/RX1	-	-	-	2ND PORT	PCSLTE-45	-	-	-	0'	0'	-
	250'	2.3	TX0/RX0	-	-	-	3RD PORT	850+45	-	-	-	0'	0'	-
	250'	2.4	TX1/RX1	-	-	-	4TH PORT	850-45	-	-	-	0'	0'	-
	250'	2.5	TX2/RX2	-	-	-	5TH PORT	PCSLTE+45	-	-	-	0'	0'	-
	250'	2.6	TX3/RX3	-	-	-	6TH PORT	PCSLTE-45	-	-	-	0'	0'	-
	250'	3.1	TX0/RX0	1	JMA	X7CQAP-FR0-445-V	AWS+45	50.5"	47'	45'	0'	0'	PROPOSED	
	250'	3.2	TX1/RX1	-	-	-	2ND PORT	AWS-45	-	-	-	0'	0'	-
	250'	3.3	TX2/RX2	-	-	-	3RD PORT	700+45	-	-	-	0'	0'	-
	250'	3.4	TX3/RX3	-	-	-	4TH PORT	700-45	-	-	-	0'	0'	-
	250'	3.5	TX2/RX2	-	-	-	5TH PORT	AWS+45	-	-	-	0'	0'	-
	250'	3.6	TX3/RX3	-	-	-	6TH PORT	AWS-45	-	-	-	0'	0'	-

ADDITIONAL: (3) COMMSCOPE DISTRIBUTION BOX MODEL #RxxDC-3315-PF-48 (ON ROOFTOP)
 (4) COMMSCOPE RACK MOUNTED DISTRIBUTION BOX MODEL #RxxDC-2260-RM-48 (INSIDE SHELTER)
 (4) COMMSCOPE 6RRU TRUNK CABLE MODEL #HFT1206-24SV2 (SEE BELOW FOR LENGTHS)
 (15) COMMSCOPE RET CONTROL JUMPER #ATCB-B01-5 (5 METERS)
 (30) COMMSCOPE RET CONTROL JUMPER #ATCB-B01-3 (3 METERS)

HYBRID CALCULATIONS:				
"X" SECTOR	"Y" SECTOR	"Z" SECTOR	"4TH" SECTOR	
20' = EQUIP. ROOM	20' = EQUIP. ROOM	20' = EQUIP. ROOM	20' = EQUIP. ROOM	
30' = INT. HORIZ. DIST.	30' = INT. HORIZ. DIST.	30' = INT. HORIZ. DIST.	30' = INT. HORIZ. DIST.	
40' = VERTICAL DIST.	40' = VERTICAL DIST.	40' = VERTICAL DIST.	40' = VERTICAL DIST.	
95' = ROOF HORIZ. DIST.	135' = ROOF HORIZ. DIST.	140' = ROOF HORIZ. DIST.	115' = ROOF HORIZ. DIST.	
10' = EXTRA	10' = EXTRA	10' = EXTRA	10' = EXTRA	
195' = TOTAL	235' = TOTAL	240' = TOTAL	215' = TOTAL	

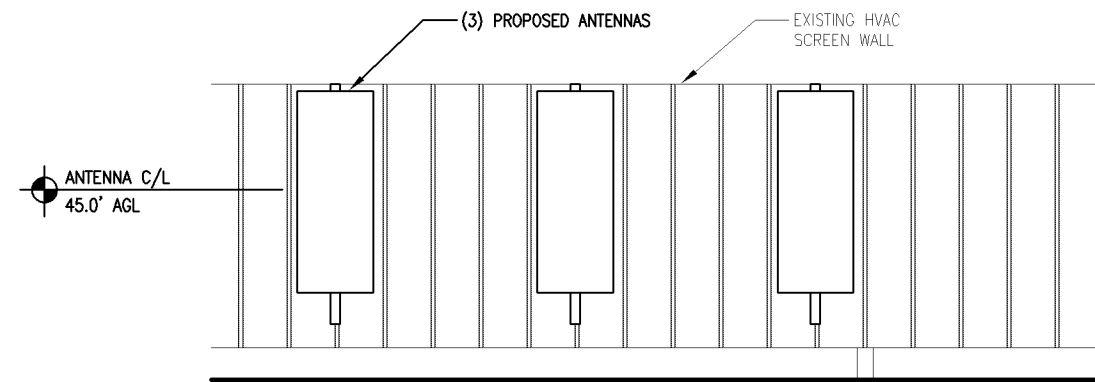
SEAL ALL UNUSED PORTS										
SEAL ALL UNUSED PORTS										
1	RRU	ERICSSON	RRUS-B13	(1) COMMSCOPE HFT412-2529-15 FIBER FEED TAIL SECTOR BOX TO RRU	PROPOSED	-	-	-	-	
SEAL ALL UNUSED PORTS										
SEAL ALL UNUSED PORTS										
1	RRU	ERICSSON	RRUS32-B2	(1) COMMSCOPE HFT412-2529-15 FIBER FEED TAIL SECTOR BOX TO RRU	PROPOSED	-	-	-	-	
1	RRU	ERICSSON	RRUS12-B5	(1) COMMSCOPE HFT412-2529-15 FIBER FEED TAIL SECTOR BOX TO RRU	PROPOSED	-	-	-	-	
CONNECT THIS PORT TO RRUS32-B2										
CONNECT THIS PORT TO RRUS32-B2										
1	RRU	ERICSSON	RRUS32-B66	(1) COMMSCOPE HFT412-2529-15 FIBER FEED TAIL SECTOR BOX TO RRU	PROPOSED	-	-	-	-	
CONNECT THIS PORT TO A2 MOD ON RRUSB13										
CONNECT THIS PORT TO A2 MOD ON RRUSB13										
CONNECT THIS PORT TO RRUS32-B66										
CONNECT THIS PORT TO RRUS32-B66										
36	JUMPER	ANDREW	LDF4-50	FOAM	1/2"	10'	TOTAL	0	TTAs	TOTAL

4 COAX KEY
SCALE: NONE

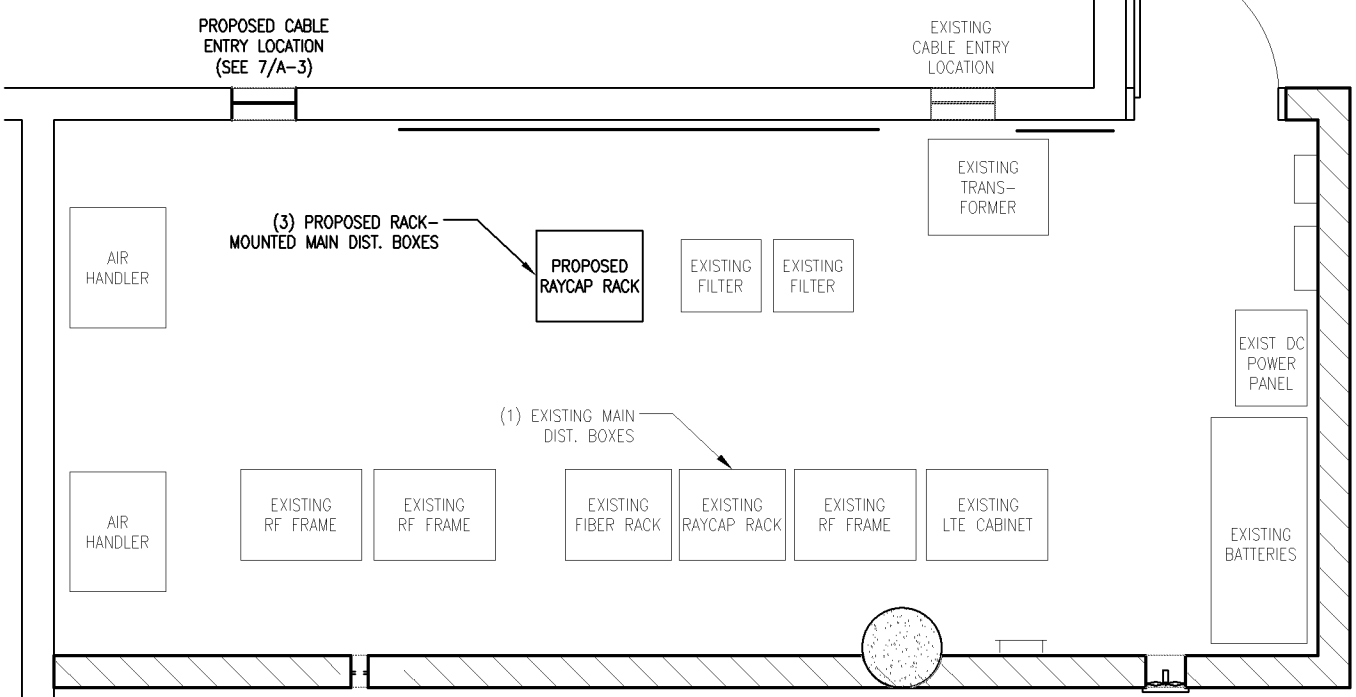
3 TTA KEY
SCALE: NONE

5 ANTENNA KEY
SCALE: NONE

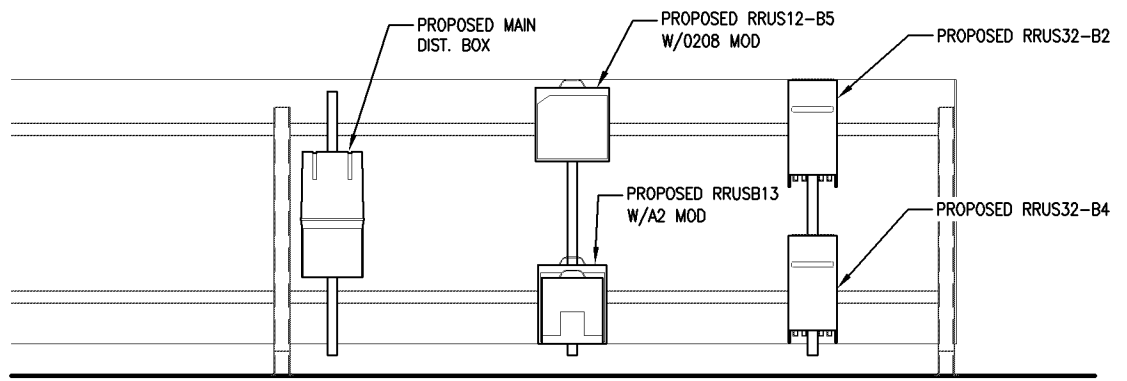
ANTENNA RADOMES ARE TO BE CLEANED IN ACCORDANCE WITH SSPC SP-1 SOLVENT CLEANING, SCARRIFY LIGHTLY WITH STEEL WOOL TO BREAK GLOSS AND PRIME WITH (2) COATS OF SHERWIN WILLIAMS SHER-CRYL PRIMER AND (2) COATS OF SHERWIN WILLIAMS SHER-CRYL HPA ACRYLIC COATING. COLOR SHALL BE SW #7505 "MANOR HOUSE"



6 "4TH" SECTOR ANTENNA ELEVATION
SCALE: 1/4" = 1'-0"

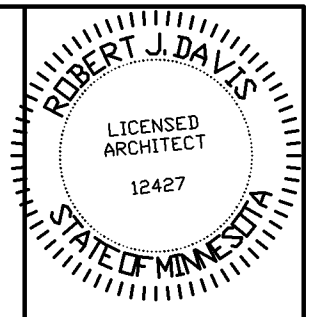


1 EQUIPMENT ROOM PLAN
SCALE: 1/4" = 1'-0"



2 "4TH" SECTOR EQUIPMENT ELEVATION
SCALE: 1/4" = 1'-0"

APPROVED
ZONING REVIEW ONLY
NMJ 03/16/2017



I hereby certify that this plan, specification, or report was prepared by me or under my direct supervision and that I am a duly Licensed Architect under the laws of the State of Minnesota.
 Print Name: ROBERT J. DAVIS
 Signature: *Robert J. Davis* License #: 12427
 Date: 01-09-17

DESIGN 1
 9973 VALLEY VIEW RD.
 EDEN PRAIRIE, MN 55344
 (952) 903-9299
 WWW.DESIGN1EP.COM

verizon
 10801 BUSH LAKE ROAD
 BLOOMINGTON, MN 55438
 (612) 720-6377

PROJECT
 20161462361
 LOC. CODE # 140079

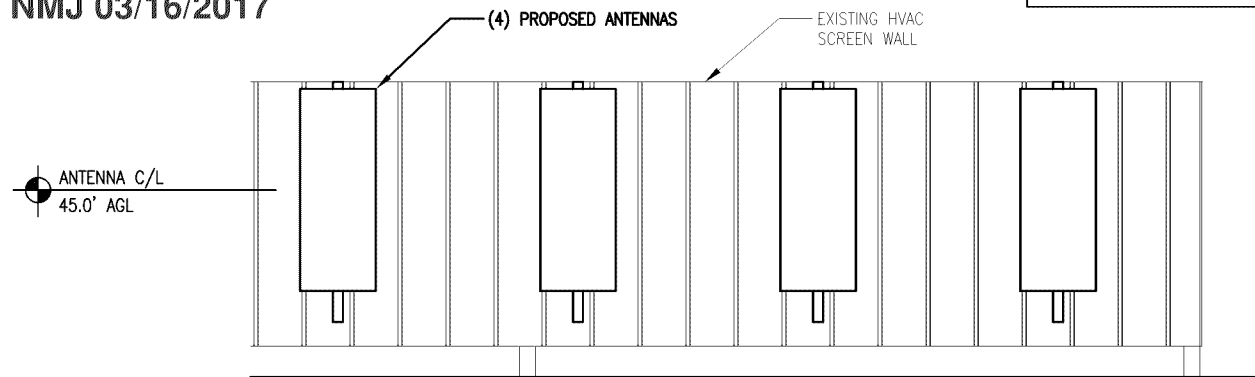
MIN
 GRAVEL PIT
 LTE ADD 850 PCS
 7901 XERXES AVENUE S
 BLOOMINGTON, MN 55431

SHEET CONTENTS:
 COAX, ANTENNA, & TTA KEY
 MOUNTING ELEVATIONS
 EQUIPMENT ROOM PLAN

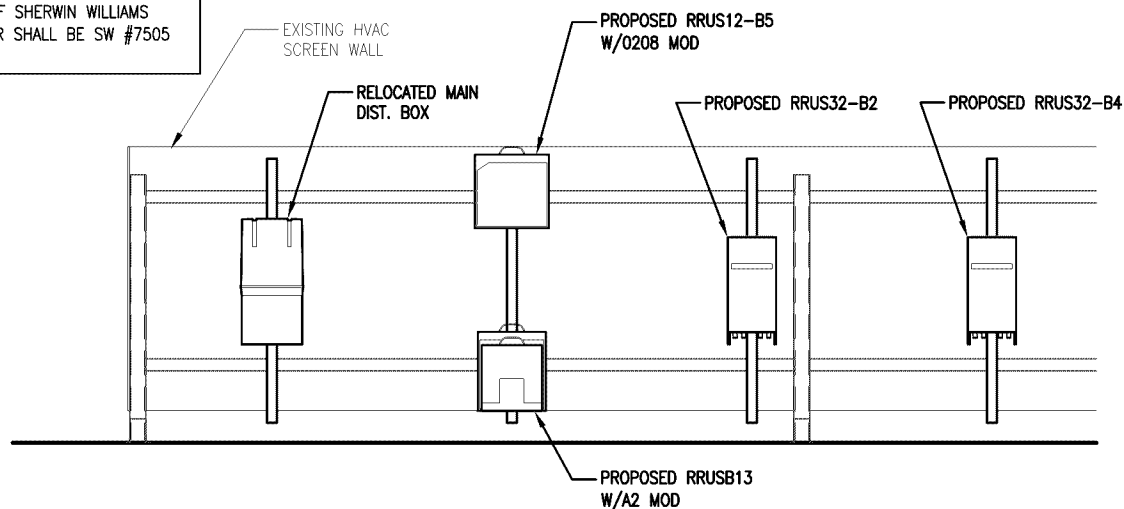
DRAWN BY: SJD
 DATE: 11-21-16
 CHECKED BY: TJR
 REV. A: 12-23-16
 REV. B: 01-09-17

APPROVED
ZONING REVIEW ONLY
 NMJ 03/16/2017

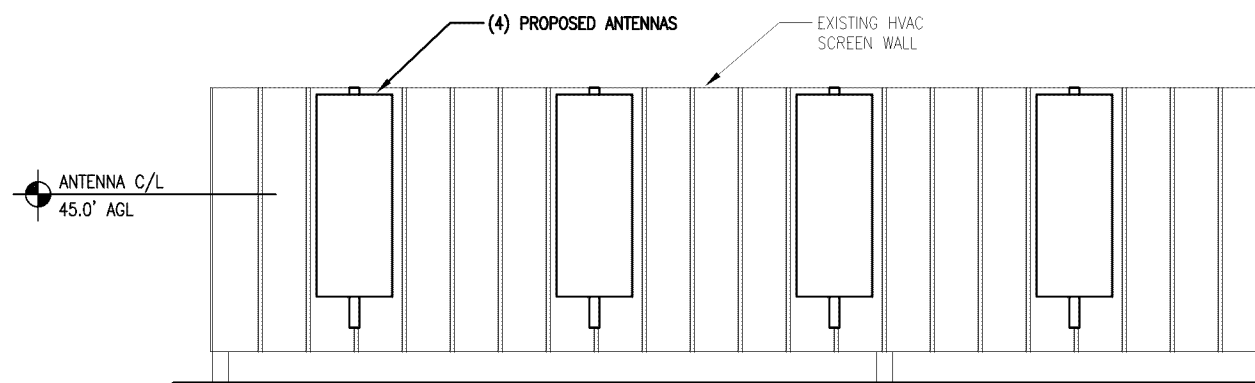
ANTENNA RADOMES ARE TO BE CLEANED IN ACCORDANCE WITH SSPC SP-1 SOLVENT CLEANING, SCARRIFY LIGHTLY WITH STEEL WOOL TO BREAK GLOSS AND PRIME WITH (2) COATS OF SHERWIN WILLIAMS SHER-CRYL PRIMER AND (2) COATS OF SHERWIN WILLIAMS SHER-CRYL HPA ACRYLIC COATING. COLOR SHALL BE SW #7505 "MANOR HOUSE"



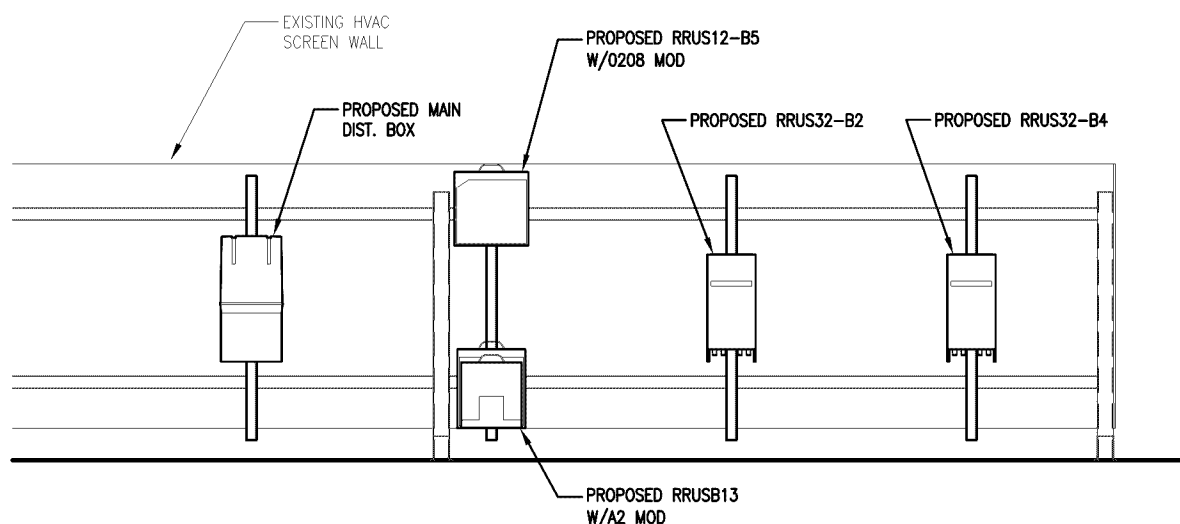
1 "X" SECTOR ANTENNA ELEVATION
 SCALE: 1/4" = 1'-0" GRAPHIC SCALE



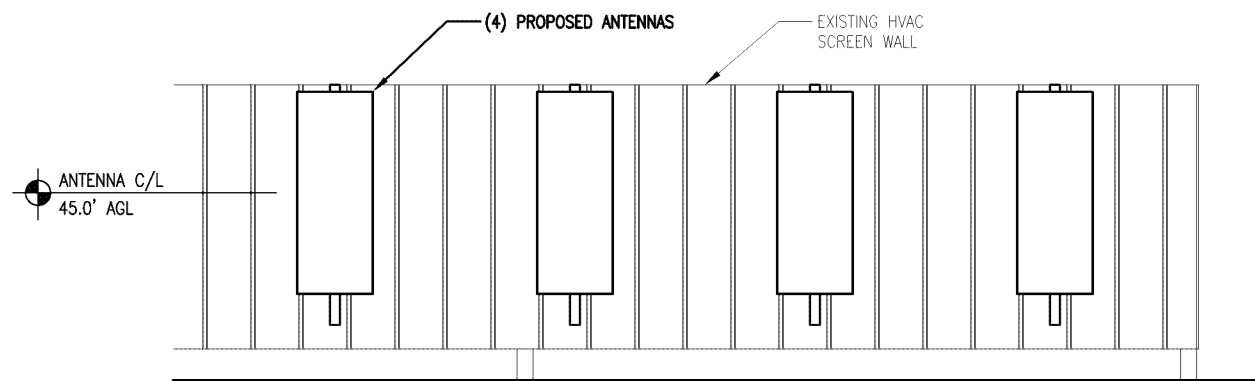
2 "X" SECTOR EQUIPMENT ELEVATION
 SCALE: 1/4" = 1'-0" GRAPHIC SCALE



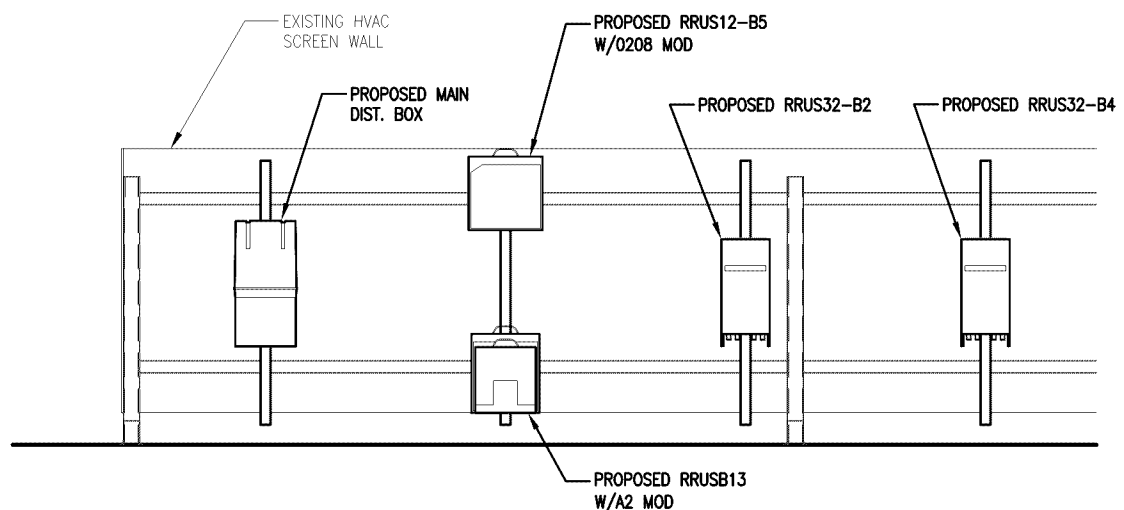
3 "Y" SECTOR ANTENNA ELEVATION
 SCALE: 1/4" = 1'-0" GRAPHIC SCALE



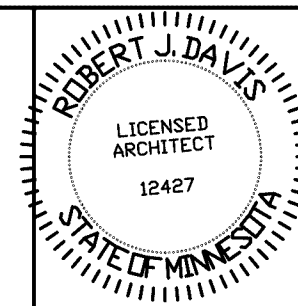
4 "Y" SECTOR EQUIPMENT ELEVATION
 SCALE: 1/4" = 1'-0" GRAPHIC SCALE



5 "Z" SECTOR ANTENNA ELEVATION
 SCALE: 1/4" = 1'-0" GRAPHIC SCALE



6 "Z" SECTOR EQUIPMENT ELEVATION
 SCALE: 1/4" = 1'-0" GRAPHIC SCALE



I hereby certify that this plan, specification, or report was prepared by me or under my direct supervision and that I am a duly Licensed Architect under the laws of the State of Minnesota.

Print Name: ROBERT J. DAVIS

Signature: *Robert J. Davis* License#: 12427

Date: 01-09-17



9973 VALLEY VIEW RD.
 EDEN PRAIRIE, MN 55344
 (952) 903-9299
 WWW.DESIGN1EP.COM



10801 BUSH LAKE ROAD
 BLOOMINGTON, MN 55438
 (612) 720-6377

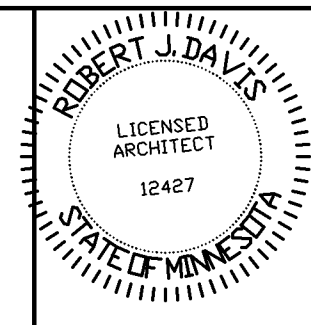
PROJECT
 20161462361
 LOC. CODE # 140079

MIN
 GRAVEL PIT
 LTE ADD 850 PCS

7901 XERXES AVENUE S
 BLOOMINGTON, MN 55431

SHEET CONTENTS:
 MOUNTING ELEVATIONS

DRAWN BY: SJD
 DATE: 11-21-16
 CHECKED BY: TJR
 REV. A 12-23-16
 REV. B 01-09-17



I hereby certify that this plan, specification, or report was prepared by me or under my direct supervision and that I am a duly Licensed Architect under the laws of the State of Minnesota.

Print Name: ROBERT J. DAVIS

Signature: *Robert J. Davis*
License #: 12427

Date: 01-09-17



9973 VALLEY VIEW RD.
EDEN PRAIRIE, MN 55344
(952) 903-9299
WWW.DESIGN1EP.COM



10801 BUSH LAKE ROAD
BLOOMINGTON, MN 55438
(612) 720-6377

PROJECT
20161462361
LOC. CODE # 140079

MIN
GRAVEL PIT
LTE ADD 850 PCS

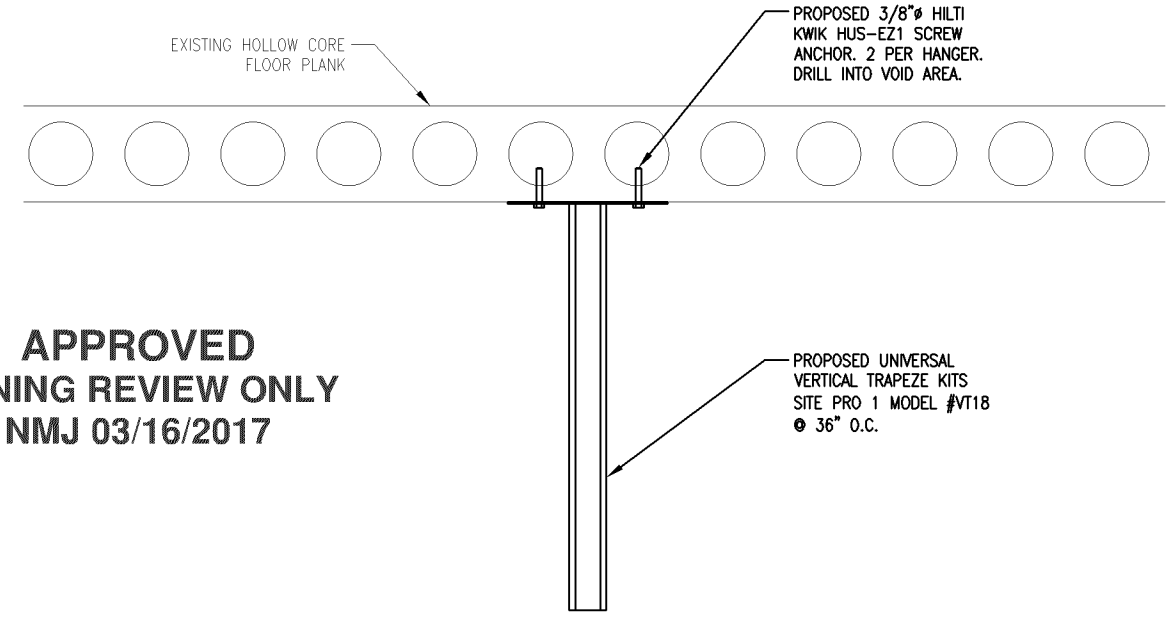
7901 XERXES AVENUE S
BLOOMINGTON, MN 55431

SHEET CONTENTS:
MOUNTING DETAILS

DRAWN BY:	SJD
DATE:	11-21-16
CHECKED BY:	TJR
REV. A	12-23-16
REV. B	01-09-17

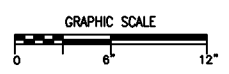
NOTE: ALONG HORIZONTAL CABLE ROUTE WITHIN CEILING, ADJUST LOCATION OF TRAPEZE ATTACHMENT TO HOLLOW-CORE PLANK AND CABLE HEIGHT ON TRAPEZE AS NEEDED WITHIN REASON TO AVOID CONFLICT WITH EXISTING CONDITIONS.

NOTE: USE STACKABLE SNAP-IN HANGERS SITE PRO 1 MODEL #78SS-A FOR 7/8" COAX & SITE PRO 1 MODEL #114SS-A FOR 6RRU HYBRID CABLES.

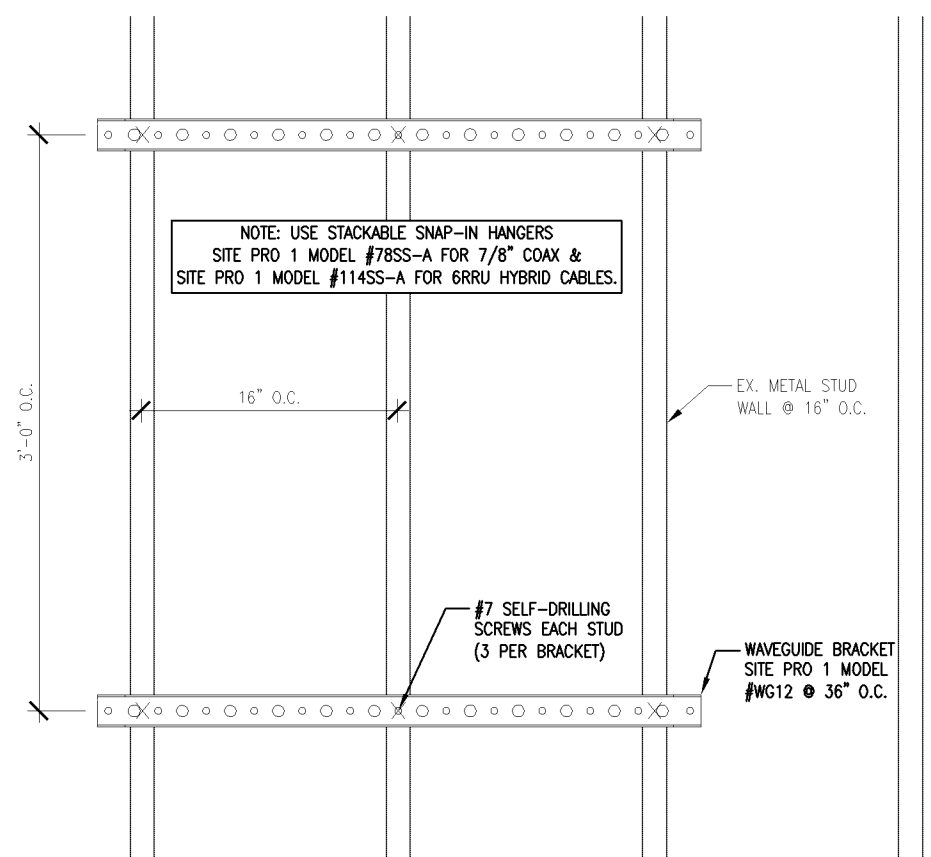


APPROVED
ZONING REVIEW ONLY
NMJ 03/16/2017

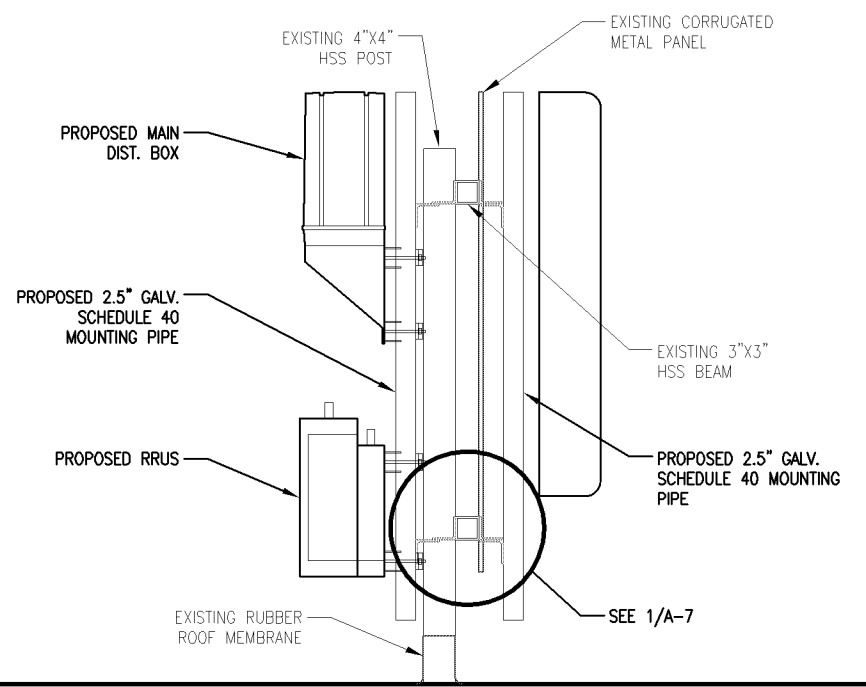
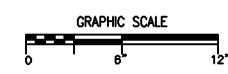
3 TRAPEZE MOUNTING DETAIL
SCALE: 1" = 1'-0"



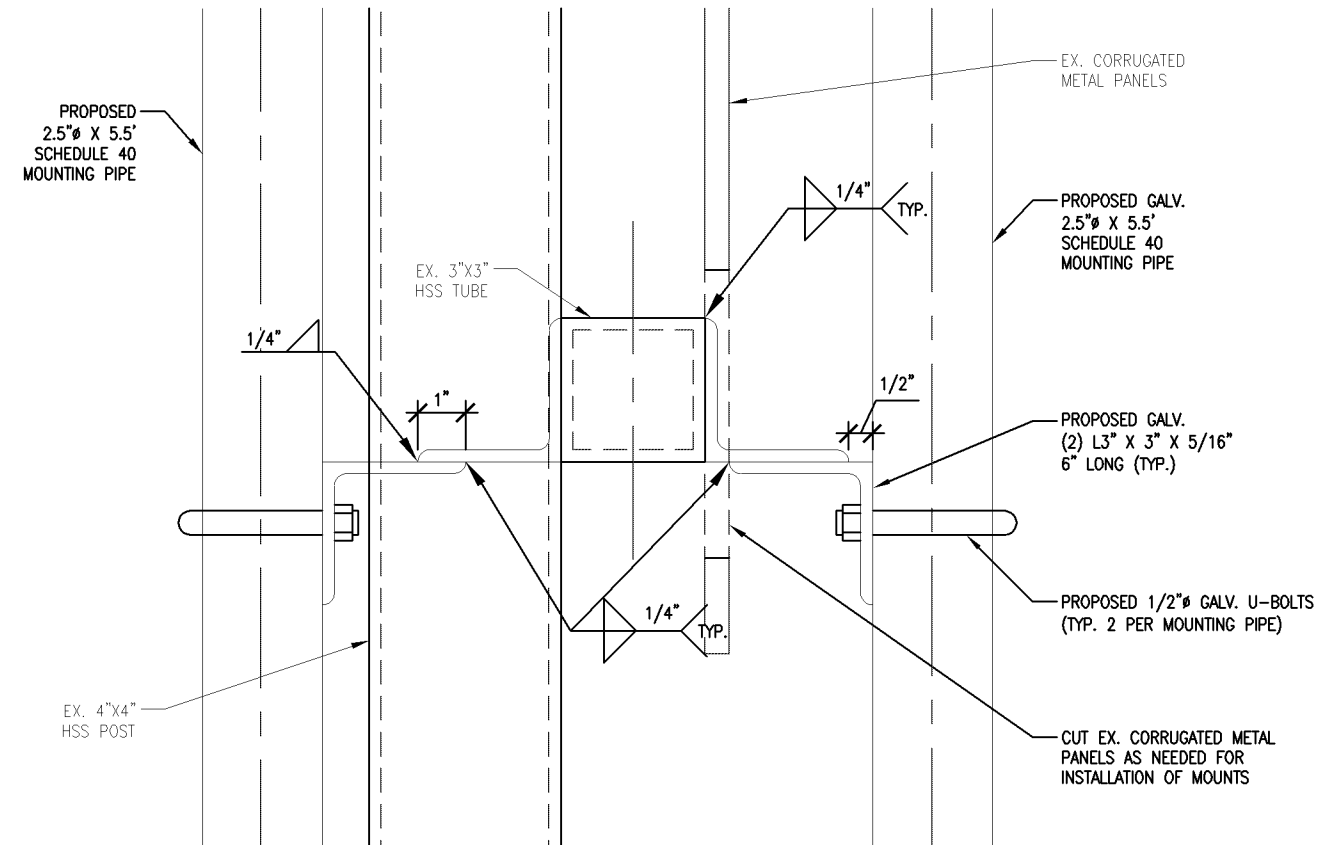
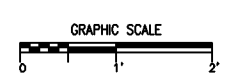
NOTE: USE STACKABLE SNAP-IN HANGERS SITE PRO 1 MODEL #78SS-A FOR 7/8" COAX & SITE PRO 1 MODEL #114SS-A FOR 6RRU HYBRID CABLES.



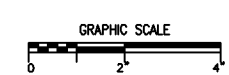
2 VERTICAL MOUNTING DETAIL
SCALE: 1" = 1'-0"



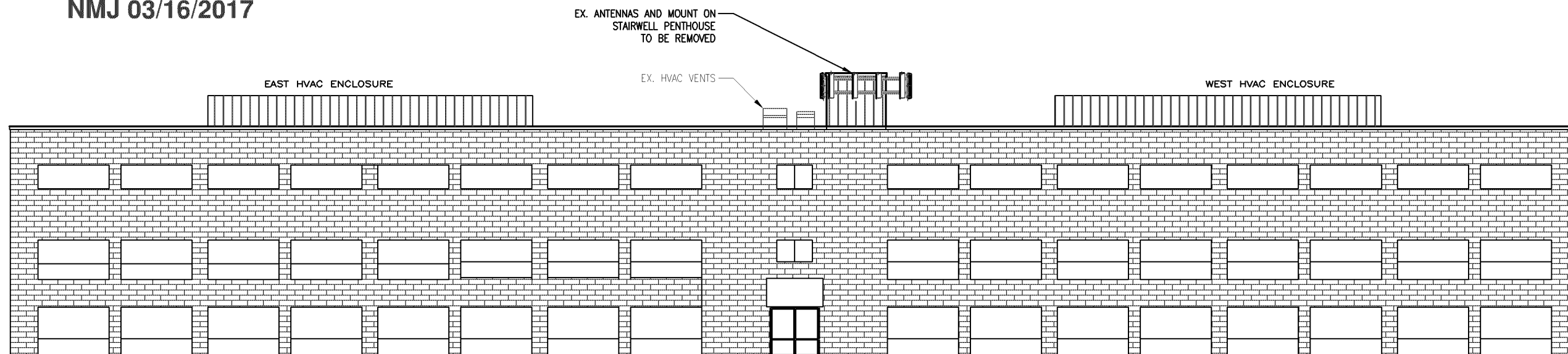
4 MOUNTING DETAIL
SCALE: 1/2" = 1'-0"



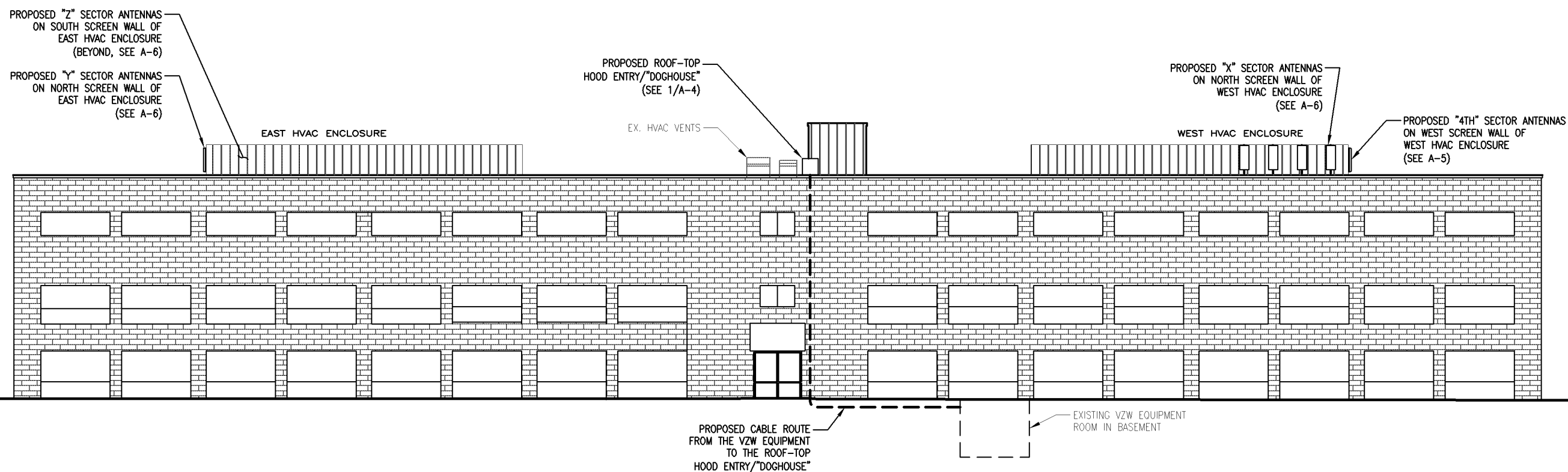
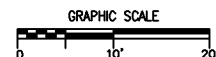
1 MOUNTING PIPE DETAIL
SCALE: 3" = 1'-0"



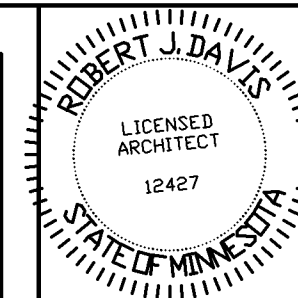
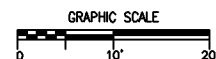
**APPROVED
ZONING REVIEW ONLY
NMJ 03/16/2017**



2 EXISTING NORTH BUILDING ELEVATION
SCALE: 1' = 20'-0"



1 PROPOSED NORTH BUILDING ELEVATION
SCALE: 1' = 20'-0"



I hereby certify that this plan, specification, or report was prepared by me or under my direct supervision and that I am a duly Licensed Architect under the laws of the State of Minnesota.

Print Name: ROBERT J. DAVIS

Signature: *Robert J. Davis* License#: 12427

Date: 01-09-17



9973 VALLEY VIEW RD.
EDEN PRAIRIE, MN 55344
(952) 903-9299
WWW.DESIGN1EP.COM



10801 BUSH LAKE ROAD
BLOOMINGTON, MN 55438
(612) 720-6377

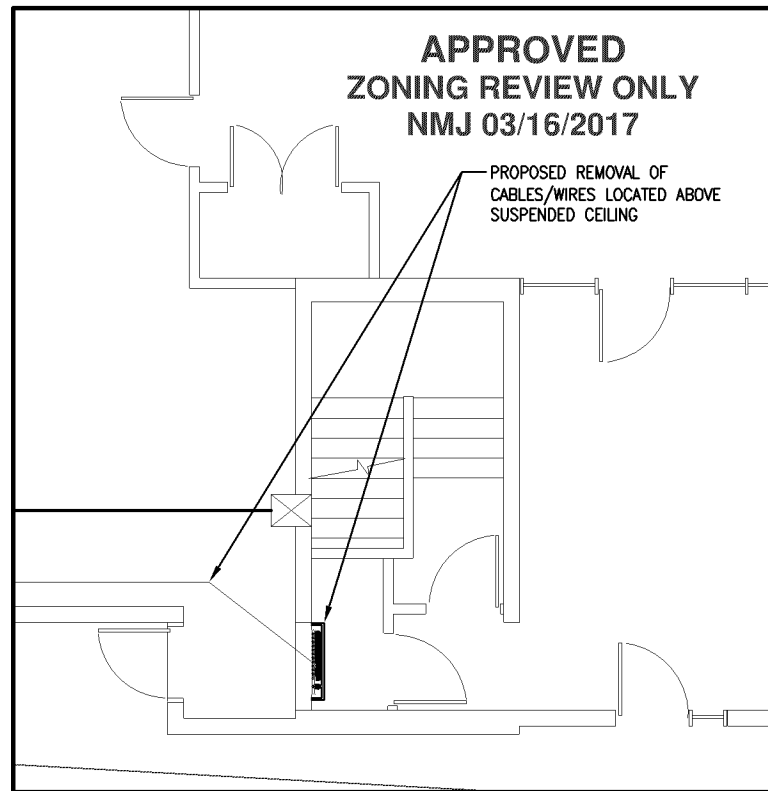
PROJECT
20161462361
LOC. CODE # 140079

MIN
GRAVEL PIT
LTE ADD 850 PCS

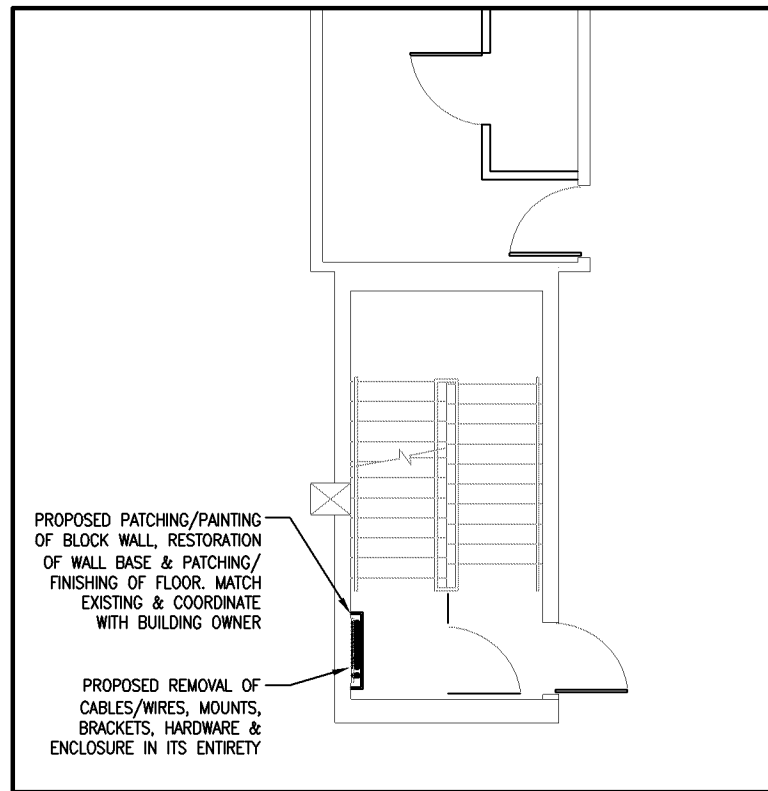
7901 XERXES AVENUE S
BLOOMINGTON, MN 55431

SHEET CONTENTS:
BUILDING ELEVATIONS

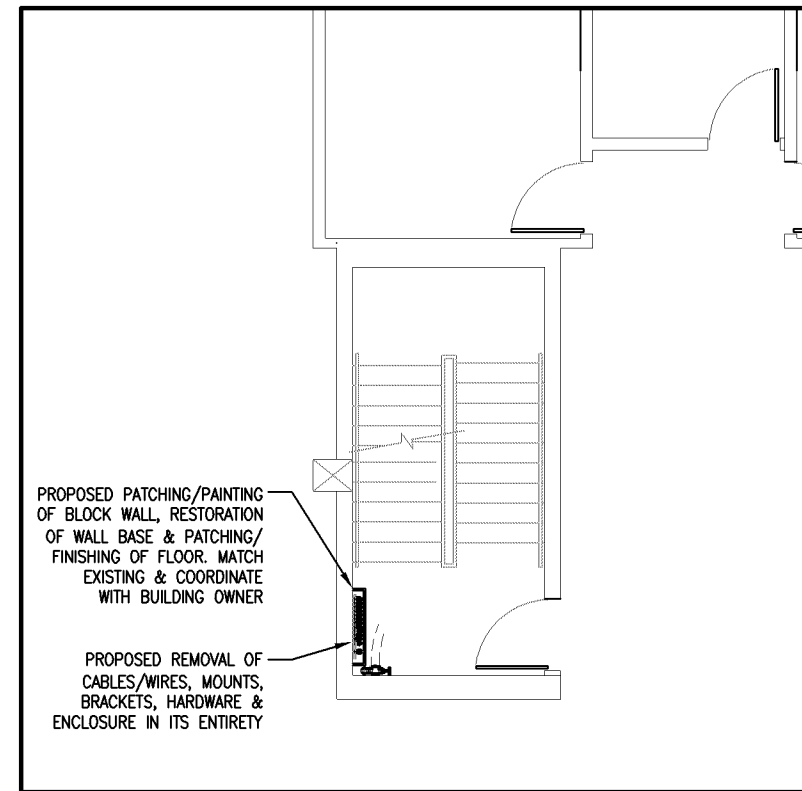
DRAWN BY:	SJD
DATE:	11-21-16
CHECKED BY:	TJR
REV. A	12-23-16
REV. B	01-09-17



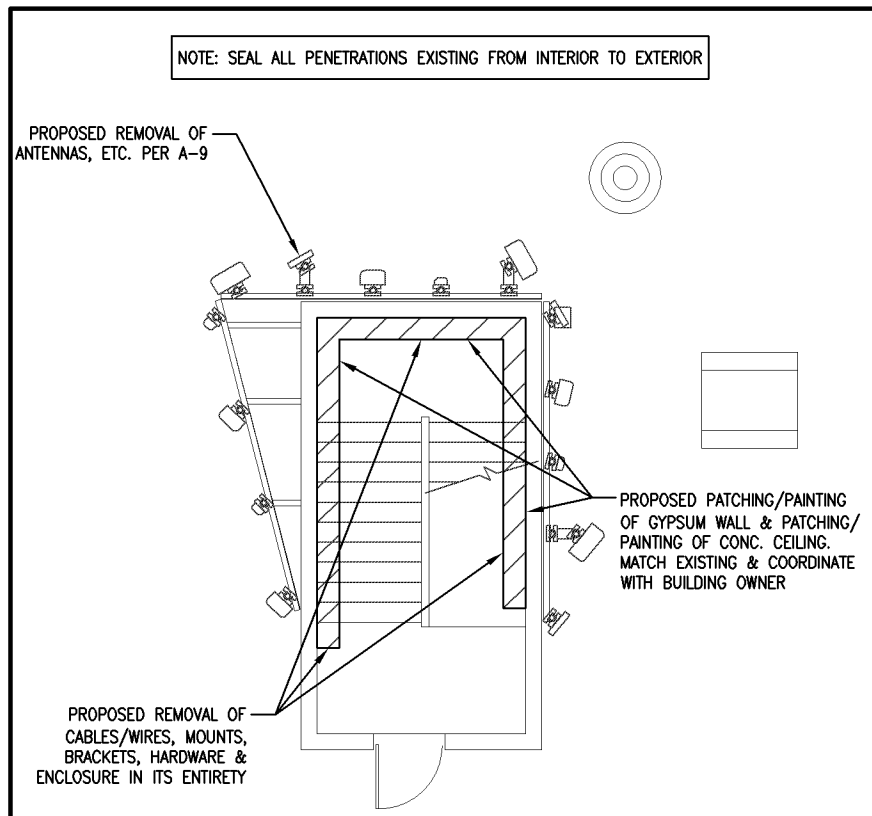
4 BASEMENT DEMOLITION PLAN
 SCALE: 1/8" = 1'-0"
 GRAPHIC SCALE



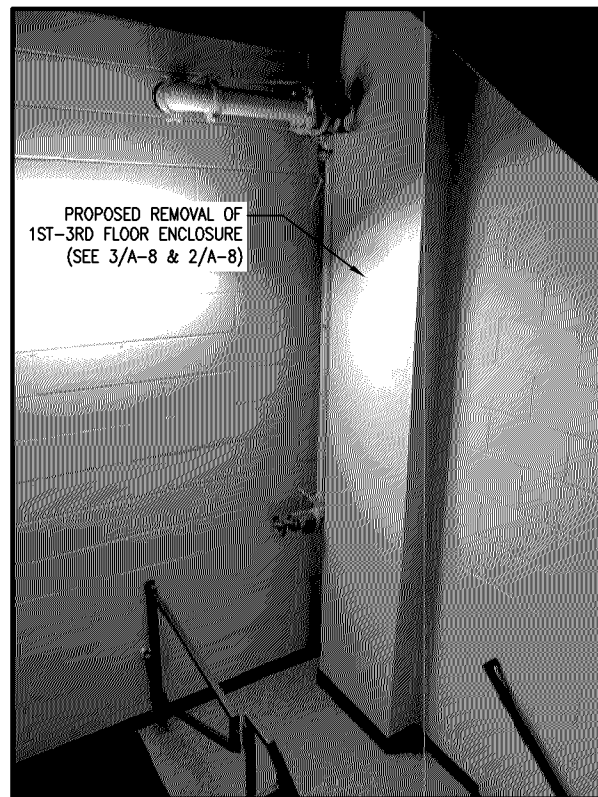
3 1ST FLOOR DEMOLITION PLAN
 SCALE: 1/8" = 1'-0"
 GRAPHIC SCALE



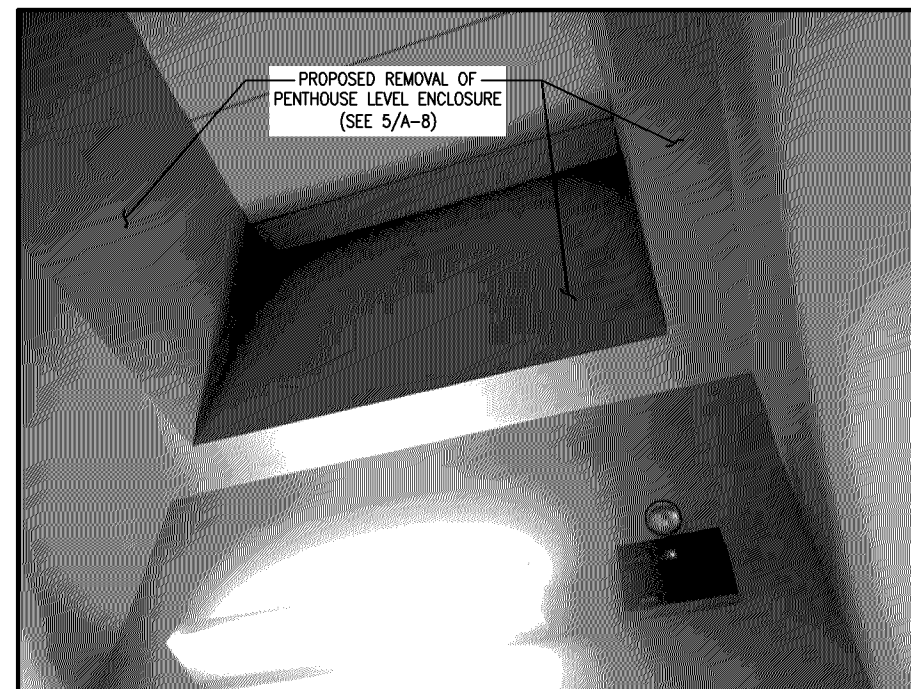
2 2ND & 3RD FLOOR DEMOLITION PLAN
 SCALE: 1/8" = 1'-0"
 GRAPHIC SCALE



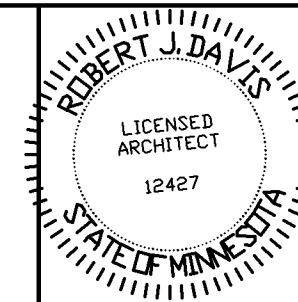
5 PENTHOUSE DEMOLITION PLAN
 SCALE: 1/8" = 1'-0"
 GRAPHIC SCALE



6 PHOTO - CABLE ENCLOSURE
 SCALE: NO SCALE



1 PHOTO - CABLE ENCLOSURE
 SCALE: NO SCALE



I hereby certify that this plan, specification, or report was prepared by me or under my direct supervision and that I am a duly Licensed Architect under the laws of the State of Minnesota.

Print Name: ROBERT J. DAVIS

Signature: *Robert J. Davis* License#: 12427

Date: 01-09-17



9973 VALLEY VIEW RD.
 EDEN PRAIRIE, MN 55344
 (952) 903-9299
 WWW.DESIGN1EP.COM



10801 BUSH LAKE ROAD
 BLOOMINGTON, MN 55438
 (612) 720-6377

PROJECT
 20161462361
 LOC. CODE # 140079

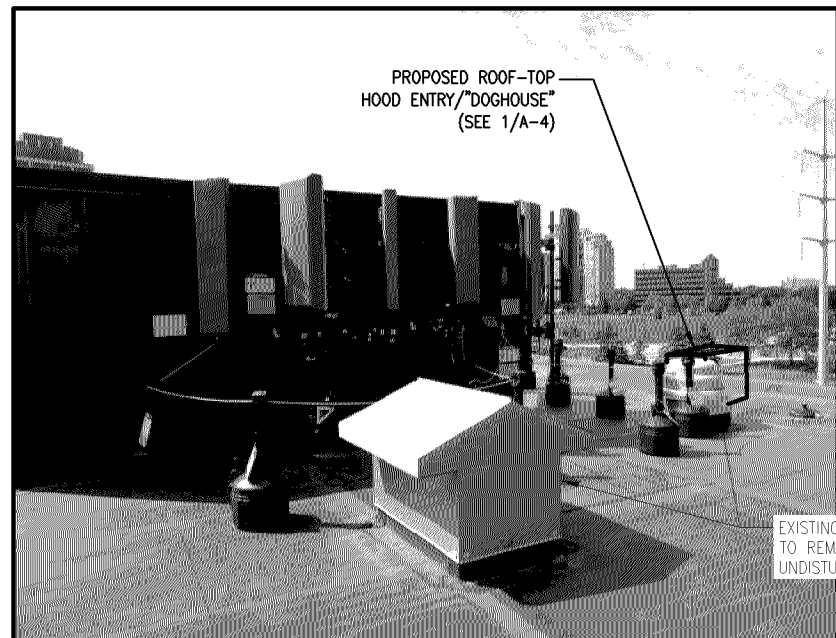
MIN
 GRAVEL PIT
 LTE ADD 850 PCS

7901 XERXES AVENUE S
 BLOOMINGTON, MN 55431

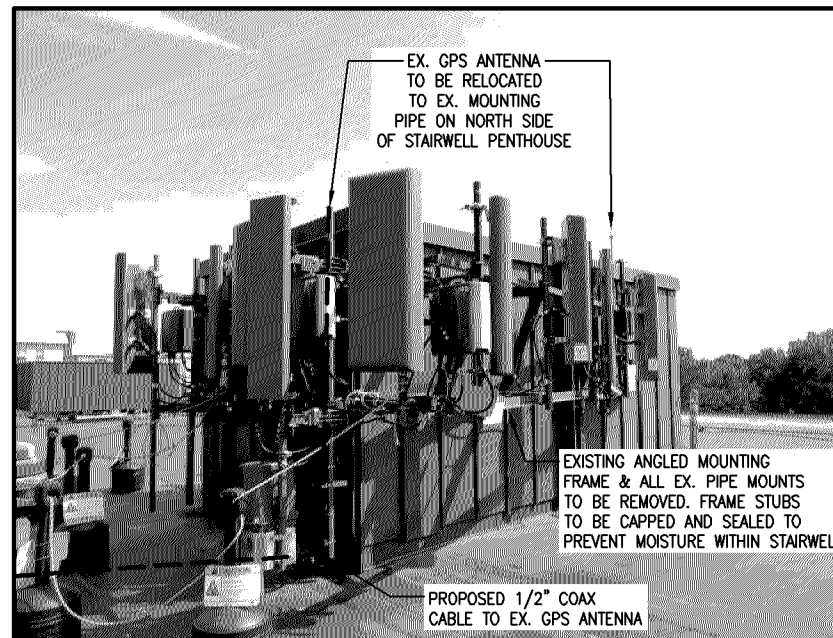
SHEET CONTENTS:
 DEMOLITION PLANS

DRAWN BY: SJD
 DATE: 11-21-16
 CHECKED BY: TJR
 REV. A 12-23-16
 REV. B 01-09-17

APPROVED
ZONING REVIEW ONLY
NMJ 03/16/2017



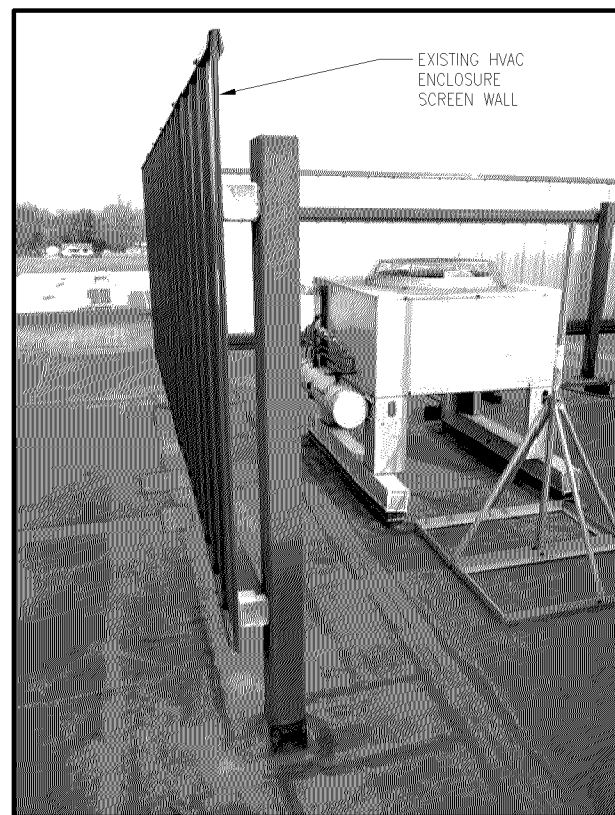
4 EX. ANTENNA/MOUNT PHOTO
SCALE: NONE



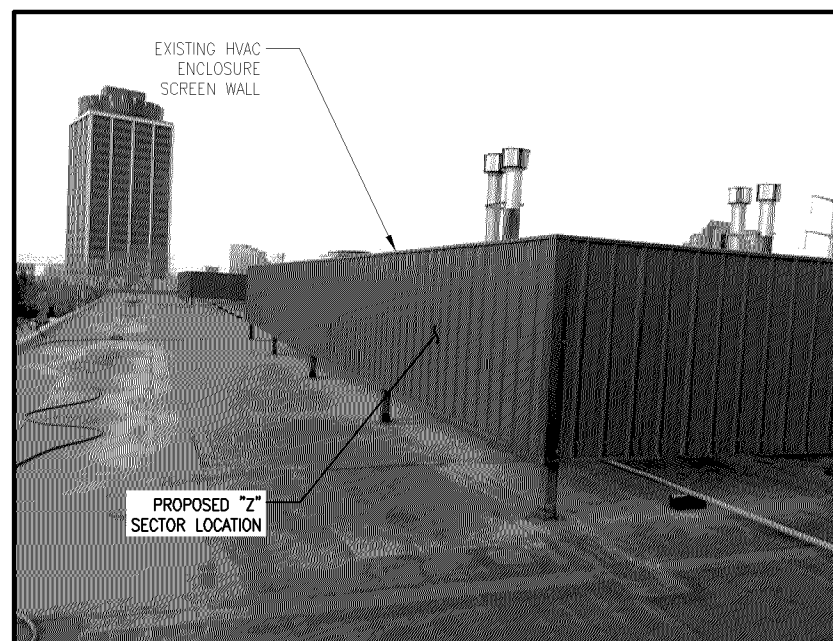
3 EX. ANTENNA/MOUNT PHOTO
SCALE: NONE



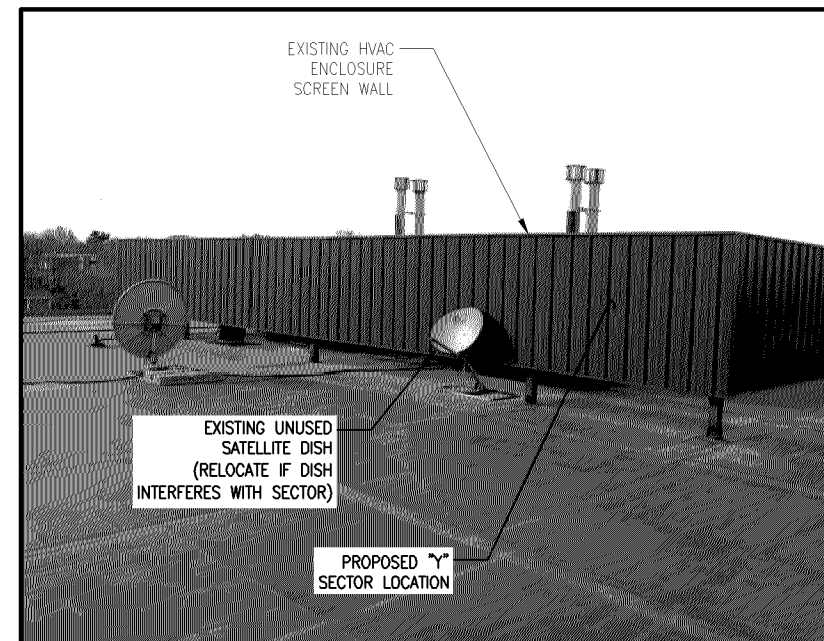
2 EX. ANTENNA/MOUNT PHOTO
SCALE: NONE



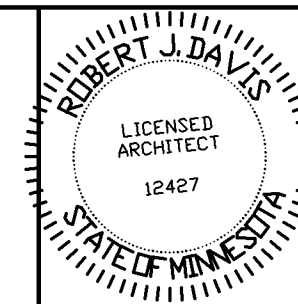
5 HVAC SCREEN WALL PHOTO
SCALE: NONE



6 "Z" SECTOR PHOTO
SCALE: NONE



1 "Y" SECTOR PHOTO
SCALE: NONE



I hereby certify that this plan, specification, or report was prepared by me or under my direct supervision and that I am a duly Licensed Architect under the laws of the State of Minnesota.

Print Name: ROBERT J. DAVIS

Signature: *Robert J. Davis* License#: 12427

Date: 01-09-17

DESIGN 1

9973 VALLEY VIEW RD.
EDEN PRAIRIE, MN 55344
(952) 903-9299
WWW.DESIGN1EP.COM

verizon

10801 BUSH LAKE ROAD
BLOOMINGTON, MN 55438
(612) 720-6377

PROJECT
20161462361
LOC. CODE # 140079

MIN
GRAVEL PIT
LTE ADD 850 PCS

7901 XERXES AVENUE S
BLOOMINGTON, MN 55431

SHEET CONTENTS:
MISC. EXTERIOR PHOTOS

DRAWN BY: SJD
DATE: 11-21-16
CHECKED BY: TJR
REV. A 12-23-16
REV. B 01-09-17