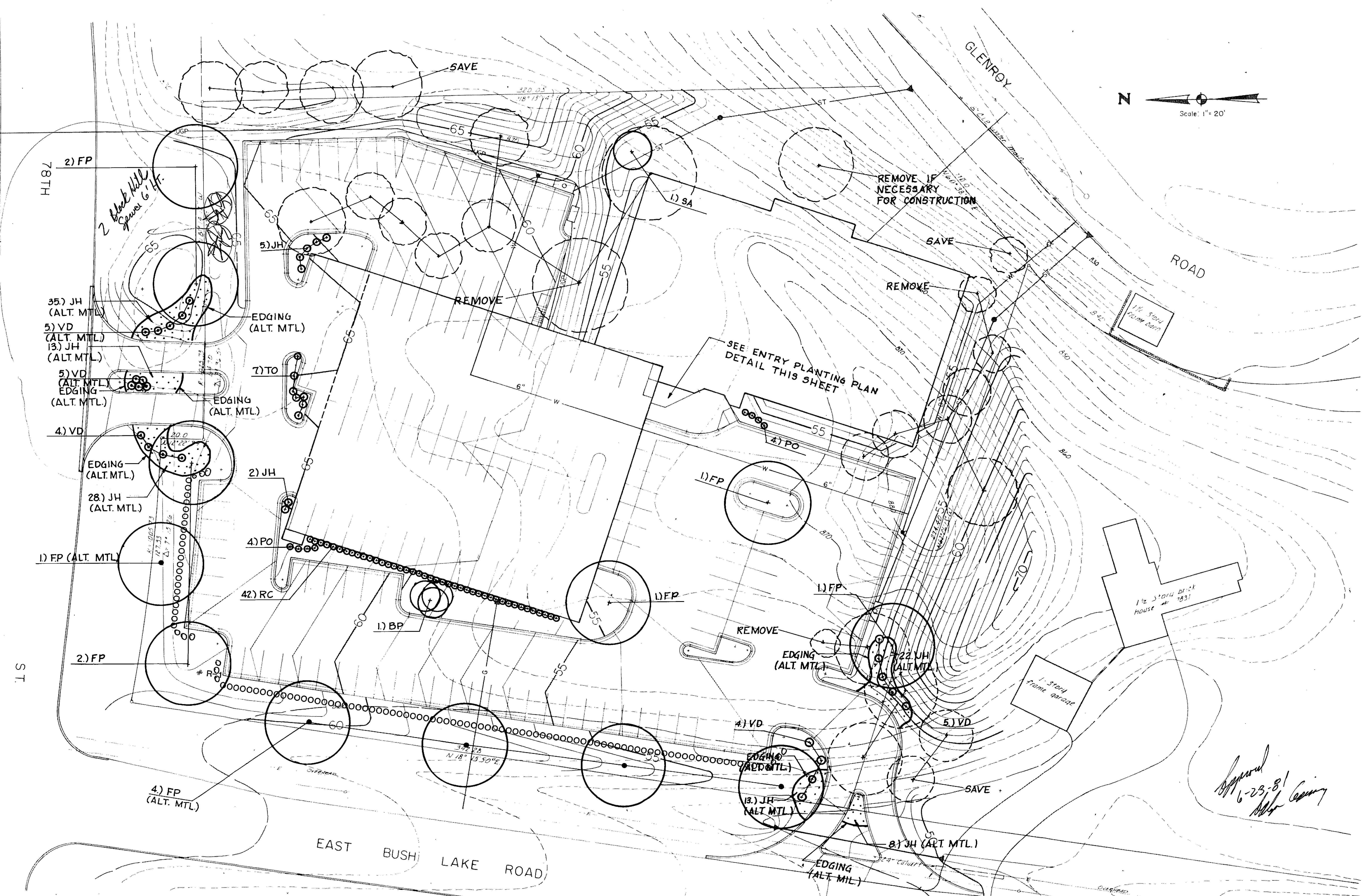


Alternate in ROW
to be approved by
City of Minneapolis Engineer

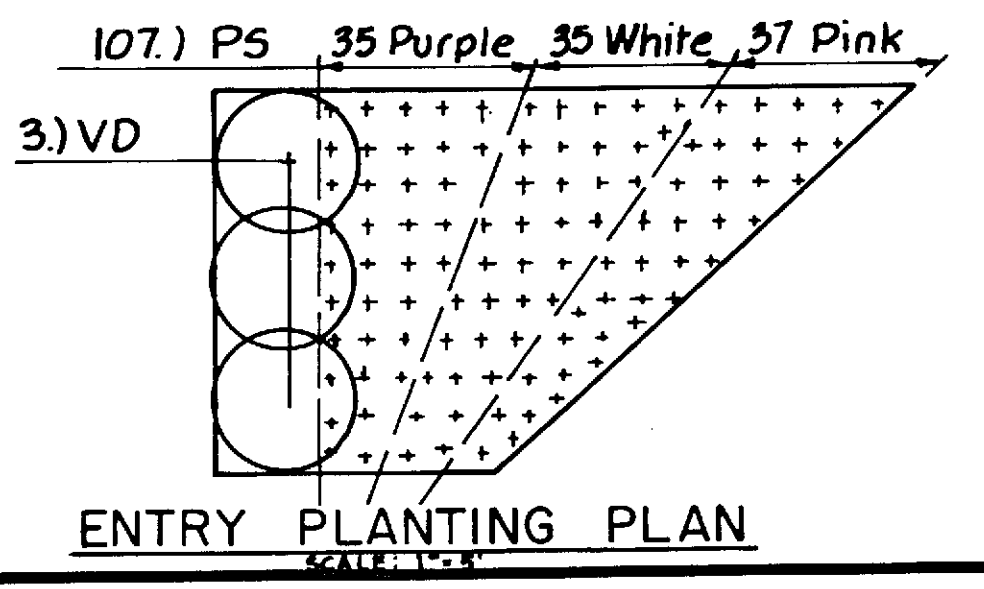


Approved
6-23-81
M. G. Gentry

Revision 1
6/15/81

PLANT MATERIALS LIST

Alternate Material	Base Plan	Symbol	Common Name	Botanical Name	Size	Condition
	1	SA	Japanese Lilac Tree	Syringa amurensis japonica	6-8" Hgt.	B & B
103	1		Maneji Juniper 3-3/2 ft. apart			
	1	BP	Paper Birch	Betula papyrifera	2 1/2" Cal.	B&B-Multi-Trunk
	42	RC	Buckthorn	Rhamnus cathartica	24" Hgt.	B.R.
	8	PO	GIANT Ninebark	Physocarpus opulifolius	12" Hgt.	Potted
119	7	JH	Andora Juniper	Juniperus horizontalis "Plumosa"	12" Hgt.	Potted
	7	TO	Globe Arborvitae	Thuja occidentalis "Woodward"	12" Hgt.	Potted
	107	PS	Creeping Phlox	Phlox subulata	4" Hgt.	Potted
14	9	VD	Arrowhead Vibernum	Viburnum dentatum	24" Hgt.	Potted
5	7	FP	Marshall Green Ash	Fraxinus pennsylvanica "Marshall Seedless"	3" Cal.	B & B



Notes:
1) All disturbed areas not otherwise surfaced shall be sodded, approximately 5900 SY.
2) Alternate Materials (ALT. MTL) to include approximately 650 LF "Black Diamond" bed divider edging.

I hereby certify that this plan, specification, or report was prepared by me or under my direct supervision and that I am a duly Registered Professional Engineer under the laws of the State of Minnesota.
James B. Seethus
Date June 24, 1981 No. 12608