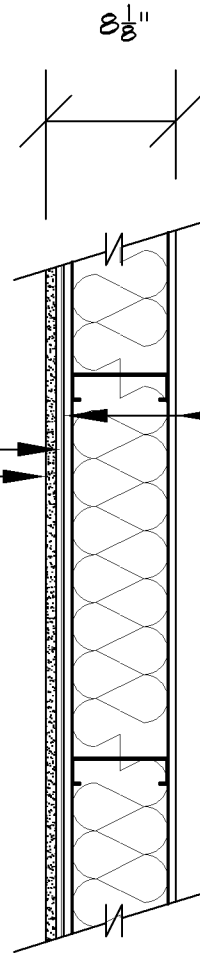


ADDITIONAL WALL COMPONENTS TO CHUCK & DON'S SIDE:  
ADD 1/2" RESILIENT CHANNELS, HORIZONTALLY @ 24" O.C  
ADD (1) LAYER, 5/8" TYPE 'X' GYP BRD., FULL HEIGHT.

EXISTING DEMISING WALL ASSEMBLY:  
1/2" TYPE 'X' GYP. BRD. EACH SIDE  
6" METAL STUDS, 24" O.C. W/  
FULL BATT FIBERGLASS INSULATION.

CHUCK & DON'S SIDE

BARBERSHOP SIDE



PLAN VIEW

CHUCK & DON'S  
8537 LYNDALE AVE S.  
BLOOMINGTON, MN 55420

SCALE: 1" = 1'-0"      07/27/21

COMMON DEMISING WALL - STC RATING 55 (OR GREATER)

