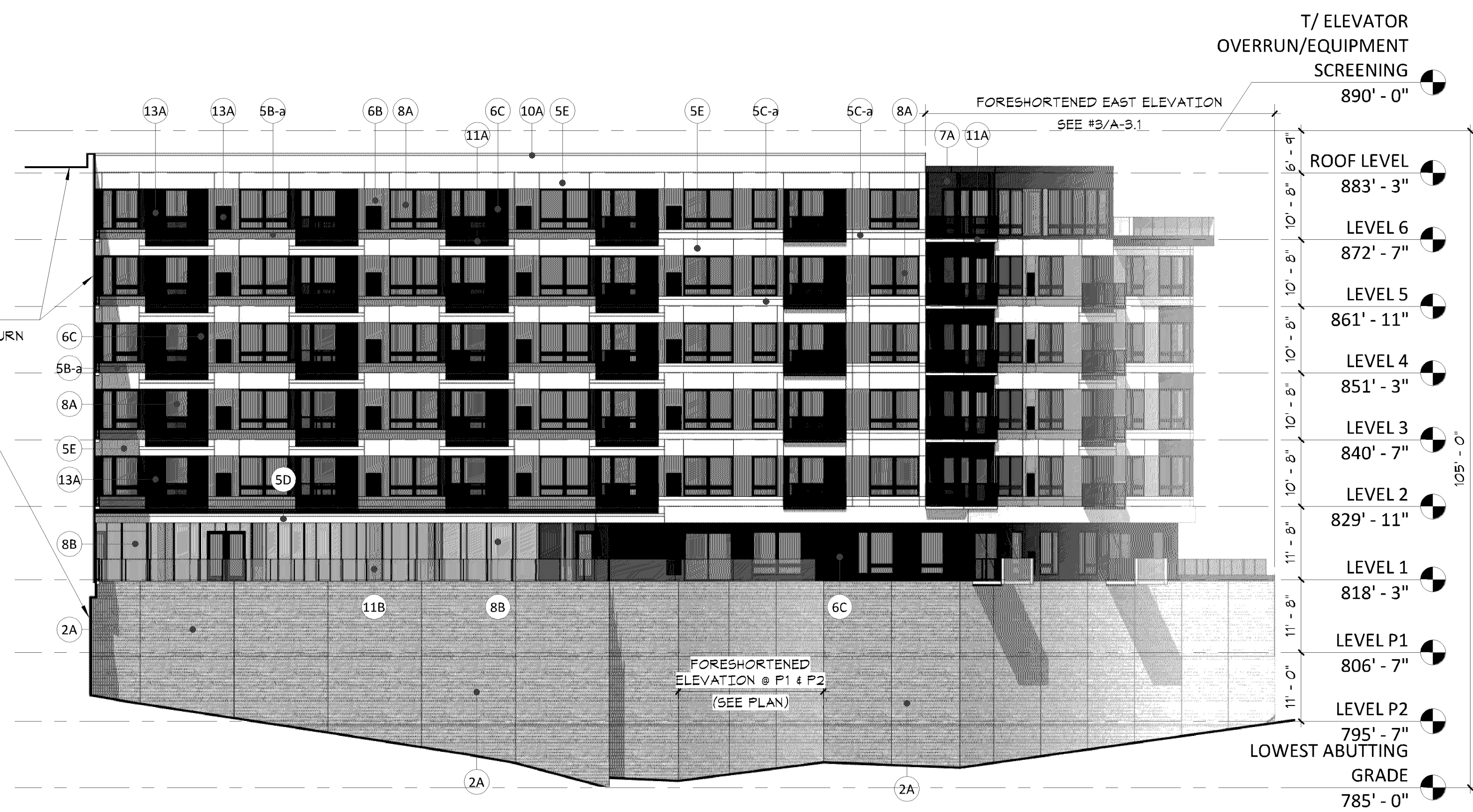


EXTERIOR MATERIAL KEYNOTES

1A	PRIMARY; BRICK COLOR #1
2A	PRIMARY; ARCHITECTURAL PRECAST
5A	PRIMARY; METAL PANEL COLOR #1
5B	PRIMARY; METAL PANEL COLOR #2
5B-a	SECONDARY; METAL PANEL COLOR #2
5C-a	SECONDARY; METAL PANEL COLOR #3
5D	SECONDARY; METAL COMPOSITE MATERIAL PANEL COLOR #3
5E	PRIMARY; METAL PANEL COLOR #3
6A	SECONDARY; FIBER CEMENT PANEL COLOR #1
6B	SECONDARY; FIBER CEMENT PANEL COLOR #2
6C	SECONDARY; FIBER CEMENT PANEL COLOR #3
7A	SECONDARY; ACCENT CLADDING
8A	PRIMARY; COMPOSITE/VINYL WINDOW/DOOR UNIT
8B	PRIMARY; PREFINISHED ALUMINUM STOREFRONT
10A	PREFINISHED METAL FLASHING COLOR #1
10B	PREFINISHED METAL FLASHING COLOR #2
11A	PREFABRICATED/PREFINISHED METAL BALCONY SYSTEM
11B	PREFABRICATED/PREFINISHED METAL GUARDRAIL SYSTEM
13A	PREFINISHED MAGIC-PAK GRILLE
13C	CONCRETE STOOD



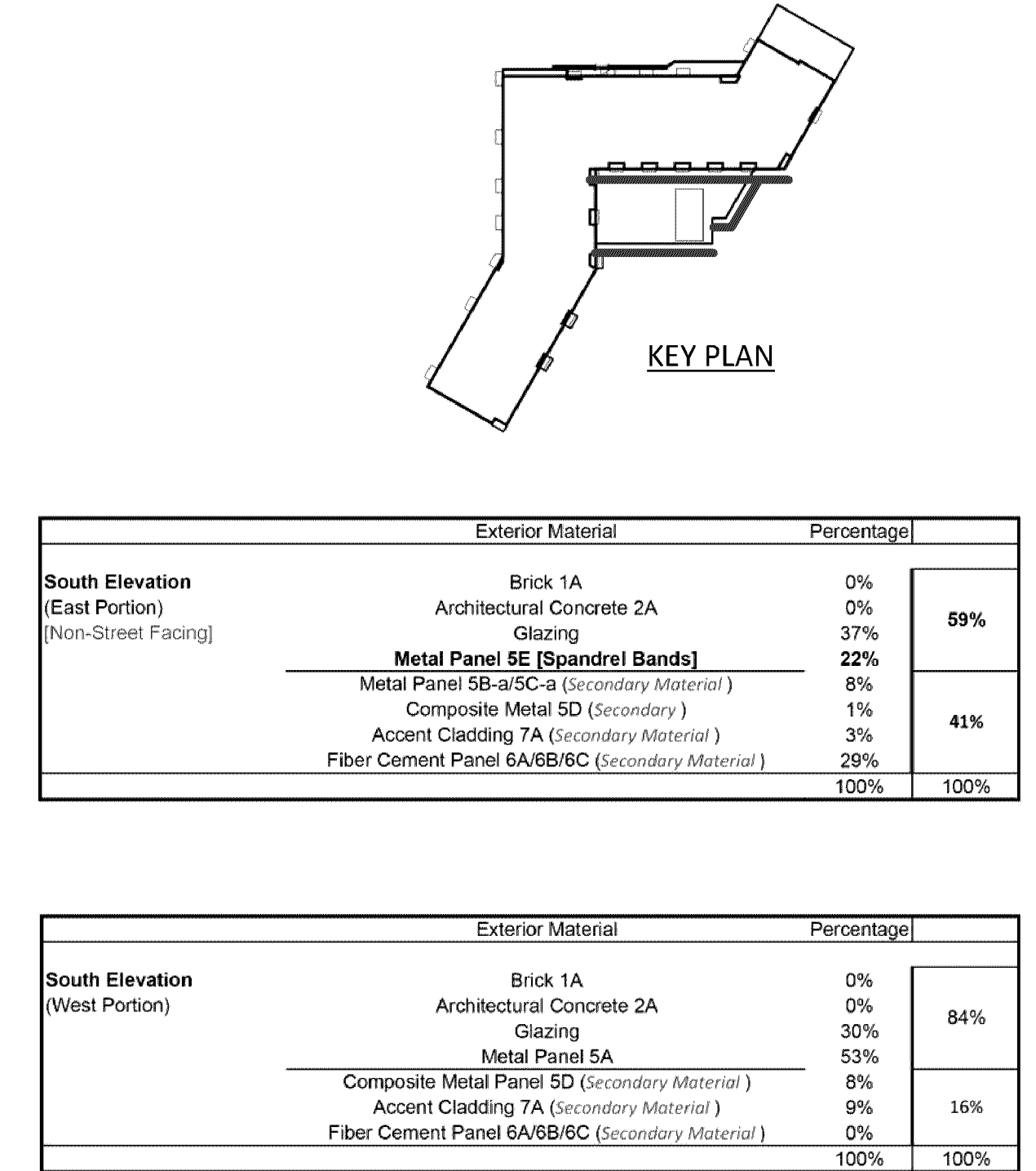
3 EAST ELEVATION
A-3.1 1/16" = 1'-0"



5 SOUTH ELEVATION (EAST PORTION)
A-3.1 1/16" = 1'-0"



2 NORTH ELEVATION
A-3.1 1/16" = 1'-0"



4 SOUTH ELEVATION (WEST PORTION)
A-3.1 1/16" = 1'-0"



1 WEST ELEVATION (34TH AVENUE)
A-3.1 1/16" = 1'-0"



500 Washington Avenue South, Suite 1080
Minneapolis, MN 55415
p 612.339.3508 | f 612.339.5382
www.esgarch.com

I hereby certify that this plan, specification, or report was prepared by me or under my direct supervision and that I am a duly licensed architect under the laws of the State of Minnesota

Signature
Typed or Printed Name

License # Date

NOT FOR CONSTRUCTION

DRC SUBMISSION
12/22/20
REVISION

ORIGINAL ISSUE:
11/16/20

REVISIONS:
No. Description Date

220545
PROJECT NUMBER

Author Checker
DRAWN BY CHECKED BY

KEY PLAN

8131 34th Ave

EXTERIOR ELEVATIONS

A-3.1