

**From:** James Riley <james.riley@roerscompanies.com>  
**Sent:** Monday, June 21, 2021 11:04 AM  
**To:** Gurney, Steve; 'PJ Disch'; Hansen, Brian  
**Cc:** Gruidl, Bryan; 'Bob Loken'; Ryan Fugleberg  
**Subject:** RE: 8131 34th Ave - Stormwater Questions

Steve,

Thanks for the follow-up. To confirm, from the ownership side we understand the potential concerns and are comfortable with the additional maintenance.

Please let me know if you need anything else.

Best,  
James



**James Riley**  
Senior Development Associate  
612.751.1285  
[james.riley@roerscompanies.com](mailto:james.riley@roerscompanies.com)  
[roerscompanies.com](http://roerscompanies.com)

**From:** Gurney, Steve <sgurney@BloomingtonMN.gov>  
**Sent:** Monday, June 21, 2021 10:12 AM  
**To:** 'PJ Disch' <PDisch@loucksinc.com>; Hansen, Brian <bhansen@BloomingtonMN.gov>; James Riley <james.riley@roerscompanies.com>  
**Cc:** Gruidl, Bryan <bgruidl@BloomingtonMN.gov>; 'Bob Loken' <bob.loken@esgarch.com>; Ryan Fugleberg <ryan.fugleberg@esgarch.com>  
**Subject:** RE: 8131 34th Ave - Stormwater Questions

The plans and stormwater report demonstrate compliance with our rules; however, we still believe the proposed infiltration, so close to the lower parking levels, will create some on-going maintenance concerns not normally associated with a building of this type. If the owners are willing to accept the extra maintenance, there are no further comments.

**From:** PJ Disch <PDisch@loucksinc.com>  
**Sent:** Monday, June 21, 2021 9:17 AM  
**To:** Hansen, Brian <bhansen@BloomingtonMN.gov>; 'James Riley' <james.riley@roerscompanies.com>  
**Cc:** Gruidl, Bryan <bgruidl@BloomingtonMN.gov>; Gurney, Steve <sgurney@BloomingtonMN.gov>; 'Bob Loken' <bob.loken@esgarch.com>; Ryan Fugleberg <ryan.fugleberg@esgarch.com>  
**Subject:** RE: 8131 34th Ave - Stormwater Questions

Brian,

Has the city been able to review the last submittal?

PJ DISCH, PE (MN)  
Associate Engineer  
D 763.496.6736 | C 763.300.3596  
www.loucksinc.com

**From:** PJ Disch  
**Sent:** Thursday, June 17, 2021 9:31 AM  
**To:** Hansen, Brian <[bhansen@BloomingtonMN.gov](mailto:bhansen@BloomingtonMN.gov)>; 'James Riley' <[james.riley@roerscompanies.com](mailto:james.riley@roerscompanies.com)>  
**Cc:** Gruidl, Bryan <[bgruidl@BloomingtonMN.gov](mailto:bgruidl@BloomingtonMN.gov)>; Gurney, Steve <[sgurney@BloomingtonMN.gov](mailto:sgurney@BloomingtonMN.gov)>; 'Bob Loken' <[bob.loken@esgarch.com](mailto:bob.loken@esgarch.com)>; Ryan Fugleberg <[ryan.fugleberg@esgarch.com](mailto:ryan.fugleberg@esgarch.com)>  
**Subject:** RE: 8131 34th Ave - Stormwater Questions

Brian,

Just following up to see if you have had a chance to review the last submittal.

PJ DISCH, PE (MN)  
Associate Engineer  
D 763.496.6736 | C 763.300.3596  
www.loucksinc.com

**From:** PJ Disch  
**Sent:** Thursday, June 10, 2021 4:27 PM  
**To:** Hansen, Brian <[bhansen@BloomingtonMN.gov](mailto:bhansen@BloomingtonMN.gov)>; 'James Riley' <[james.riley@roerscompanies.com](mailto:james.riley@roerscompanies.com)>  
**Cc:** Gruidl, Bryan <[bgruidl@BloomingtonMN.gov](mailto:bgruidl@BloomingtonMN.gov)>; Gurney, Steve <[sgurney@BloomingtonMN.gov](mailto:sgurney@BloomingtonMN.gov)>; 'Bob Loken' <[bob.loken@esgarch.com](mailto:bob.loken@esgarch.com)>; Ryan Fugleberg <[ryan.fugleberg@esgarch.com](mailto:ryan.fugleberg@esgarch.com)>  
**Subject:** RE: 8131 34th Ave - Stormwater Questions

Brian,

See below for responses in Blue. Also I have attached updated plans, storm report and easement exhibit.

PJ DISCH, PE (MN)  
Associate Engineer  
D 763.496.6736 | C 763.300.3596  
www.loucksinc.com

**From:** Hansen, Brian <[bhansen@BloomingtonMN.gov](mailto:bhansen@BloomingtonMN.gov)>  
**Sent:** Wednesday, June 9, 2021 4:08 PM  
**To:** PJ Disch <[PDisch@loucksinc.com](mailto:PDisch@loucksinc.com)>; 'James Riley' <[james.riley@roerscompanies.com](mailto:james.riley@roerscompanies.com)>  
**Cc:** Gruidl, Bryan <[bgruidl@BloomingtonMN.gov](mailto:bgruidl@BloomingtonMN.gov)>; Gurney, Steve <[sgurney@BloomingtonMN.gov](mailto:sgurney@BloomingtonMN.gov)>; 'Bob Loken' <[bob.loken@esgarch.com](mailto:bob.loken@esgarch.com)>  
**Subject:** RE: 8131 34th Ave - Stormwater Questions

PJ/James/Bob

We have finished reviewing the stormwater plans and report and the proposed system meets our rules and requirements. Before the Water Resources Review of your building permit can be completed and approved the following items must be completed:

- 1) See the comment on the attached sheet from the stormwater report, please address. Storm report has been revised.
- 2) Private utility easement or agreement with the property to the north to drain your site into their private system. Please provide documentation to the City. See attached easement exhibit.
- 3) In lieu of the steep slope certification form, which Loucks had requested some revisions to, we would accept and acknowledgement within your stormwater report that indicates the area is suitable for the proposed activity

and it's design meets the requirements of the Lowe Minnesota River Watershed District steep slope rules. See revised storm report.

- 4) Please demonstrate how you will manage the stormwater infiltration system so water doesn't end up in the lower parking level storm drains. Architect will provide information on building waterproofing.

If you have any additional questions on any of the items listed please feel free to contact me. Thank you.



**BRIAN HANSEN**  
Development Coordinator  
PH: 952-563-4543

**From:** Hansen, Brian  
**Sent:** Tuesday, June 8, 2021 4:14 PM  
**To:** PJ Disch <[PDisch@loucksinc.com](mailto:PDisch@loucksinc.com)>; James Riley <[james.riley@roerscompanies.com](mailto:james.riley@roerscompanies.com)>  
**Cc:** Gruidl, Bryan <[bgruidl@BloomingtonMN.gov](mailto:bgruidl@BloomingtonMN.gov)>; Gurney, Steve <[sgurney@BloomingtonMN.gov](mailto:sgurney@BloomingtonMN.gov)>; Bob Loken <[bob.loken@esgarch.com](mailto:bob.loken@esgarch.com)>  
**Subject:** RE: 8131 34th Ave - Stormwater Questions

Thanks PJ. We are reviewing and will follow up with any questions.



**BRIAN HANSEN**  
Development Coordinator  
PH: 952-563-4543

**From:** PJ Disch <[PDisch@loucksinc.com](mailto:PDisch@loucksinc.com)>  
**Sent:** Tuesday, June 8, 2021 11:55 AM  
**To:** Hansen, Brian <[bhansen@BloomingtonMN.gov](mailto:bhansen@BloomingtonMN.gov)>; James Riley <[james.riley@roerscompanies.com](mailto:james.riley@roerscompanies.com)>  
**Cc:** Gruidl, Bryan <[bgruidl@BloomingtonMN.gov](mailto:bgruidl@BloomingtonMN.gov)>; Gurney, Steve <[sgurney@BloomingtonMN.gov](mailto:sgurney@BloomingtonMN.gov)>; Bob Loken <[bob.loken@esgarch.com](mailto:bob.loken@esgarch.com)>  
**Subject:** RE: 8131 34th Ave - Stormwater Questions

Brian,

Here you go. Let me know if you have questions.

**PJ DISCH, PE (MN)**  
Associate Engineer  
D 763.496.6736 | C 763.300.3596  
[www.loucksinc.com](http://www.loucksinc.com)

**From:** Hansen, Brian <[bhansen@BloomingtonMN.gov](mailto:bhansen@BloomingtonMN.gov)>  
**Sent:** Monday, June 7, 2021 1:26 PM  
**To:** PJ Disch <[PDisch@loucksinc.com](mailto:PDisch@loucksinc.com)>; James Riley <[james.riley@roerscompanies.com](mailto:james.riley@roerscompanies.com)>  
**Cc:** Gruidl, Bryan <[bgruidl@BloomingtonMN.gov](mailto:bgruidl@BloomingtonMN.gov)>; Gurney, Steve <[sgurney@BloomingtonMN.gov](mailto:sgurney@BloomingtonMN.gov)>; Bob Loken <[bob.loken@esgarch.com](mailto:bob.loken@esgarch.com)>  
**Subject:** RE: 8131 34th Ave - Stormwater Questions

Thanks for the update PJ. We will look forward to it.



**BRIAN HANSEN**  
Development Coordinator  
PH: 952-563-4543

**From:** PJ Disch <[PDisch@loucksinc.com](mailto:PDisch@loucksinc.com)>  
**Sent:** Monday, June 7, 2021 1:20 PM  
**To:** Hansen, Brian <[bhansen@BloomingtonMN.gov](mailto:bhansen@BloomingtonMN.gov)>; James Riley <[james.riley@roerscompanies.com](mailto:james.riley@roerscompanies.com)>  
**Cc:** Gruidl, Bryan <[bgruidl@BloomingtonMN.gov](mailto:bgruidl@BloomingtonMN.gov)>; Gurney, Steve <[sgurney@BloomingtonMN.gov](mailto:sgurney@BloomingtonMN.gov)>; Bob Loken <[bob.loken@esgarch.com](mailto:bob.loken@esgarch.com)>  
**Subject:** RE: 8131 34th Ave - Stormwater Questions

Brian,

We should have all the changes back to you tomorrow morning before noon.

**PJ DISCH, PE (MN)**  
Associate Engineer  
D 763.496.6736 | C 763.300.3596  
[www.loucksinc.com](http://www.loucksinc.com)

**From:** Hansen, Brian <[bhansen@BloomingtonMN.gov](mailto:bhansen@BloomingtonMN.gov)>  
**Sent:** Wednesday, June 2, 2021 7:14 AM  
**To:** PJ Disch <[PDisch@loucksinc.com](mailto:PDisch@loucksinc.com)>; James Riley <[james.riley@roerscompanies.com](mailto:james.riley@roerscompanies.com)>  
**Cc:** Gruidl, Bryan <[bgruidl@BloomingtonMN.gov](mailto:bgruidl@BloomingtonMN.gov)>; Gurney, Steve <[sgurney@BloomingtonMN.gov](mailto:sgurney@BloomingtonMN.gov)>; Bob Loken <[bob.loken@esgarch.com](mailto:bob.loken@esgarch.com)>  
**Subject:** RE: 8131 34th Ave - Stormwater Questions

Hi PJ,

Just following up with you on this one. If you haven't already please follow up directly with Steve Gurney at [sgurney@BloomingtonMN.gov](mailto:sgurney@BloomingtonMN.gov) or (952) 563-4606 with questions regarding the comments on the attached sheet.

Thanks.



**BRIAN HANSEN**  
Development Coordinator  
PH: 952-563-4543

**From:** PJ Disch <[PDisch@loucksinc.com](mailto:PDisch@loucksinc.com)>  
**Sent:** Friday, May 28, 2021 10:42 AM  
**To:** Hansen, Brian <[bhansen@BloomingtonMN.gov](mailto:bhansen@BloomingtonMN.gov)>; James Riley <[james.riley@roerscompanies.com](mailto:james.riley@roerscompanies.com)>  
**Cc:** Gruidl, Bryan <[bgruidl@BloomingtonMN.gov](mailto:bgruidl@BloomingtonMN.gov)>; Gurney, Steve <[sgurney@BloomingtonMN.gov](mailto:sgurney@BloomingtonMN.gov)>; Bob Loken <[bob.loken@esgarch.com](mailto:bob.loken@esgarch.com)>  
**Subject:** RE: 8131 34th Ave - Stormwater Questions

Brian,  
Just following up to the voice message I just left you. Who should I talk to about the comments on sheet C4-2?

**PJ DISCH, PE (MN)**  
Associate Engineer  
D 763.496.6736 | C 763.300.3596  
www.loucksinc.com

**From:** Hansen, Brian <[bhansen@BloomingtonMN.gov](mailto:bhansen@BloomingtonMN.gov)>  
**Sent:** Thursday, May 27, 2021 11:44 AM  
**To:** PJ Disch <[PDisch@loucksinc.com](mailto:PDisch@loucksinc.com)>; James Riley <[james.riley@roerscompanies.com](mailto:james.riley@roerscompanies.com)>  
**Cc:** Gruidl, Bryan <[bgruidl@BloomingtonMN.gov](mailto:bgruidl@BloomingtonMN.gov)>; Gurney, Steve <[sgurney@BloomingtonMN.gov](mailto:sgurney@BloomingtonMN.gov)>; Bob Loken <[bob.loken@esgarch.com](mailto:bob.loken@esgarch.com)>  
**Subject:** RE: 8131 34th Ave - Stormwater Questions

PJ,

Please see the attached comments we had to the submitted revised plan. If you could review and address that would be great. Outside of an approved design we will also need documentation from the adjacent property owner allowing for the stormwater to be discharged through their system before signing off on the Water Resources review of the permit. I know that Roers is aware of this and working on this item but just wanted it documented.

Regarding the steep slope certification document revisions proposed, Staff discussed the proposed changes with the LMRWD. It was determined that the certification document would not be required. In lieu of the document you will need to include a section within your stormwater report that acknowledges the LMRWD steep slope requirements and describes how your design incorporates those and is in compliance with those rules.

Please feel free to contact us with any questions. Thank you.



**BRIAN HANSEN**  
Development Coordinator  
PH: 952-563-4543

**From:** PJ Disch <[PDisch@loucksinc.com](mailto:PDisch@loucksinc.com)>  
**Sent:** Wednesday, May 26, 2021 2:28 PM  
**To:** Hansen, Brian <[bhansen@BloomingtonMN.gov](mailto:bhansen@BloomingtonMN.gov)>; James Riley <[james.riley@roerscompanies.com](mailto:james.riley@roerscompanies.com)>  
**Cc:** Gruidl, Bryan <[bgruidl@BloomingtonMN.gov](mailto:bgruidl@BloomingtonMN.gov)>; Gurney, Steve <[sgurney@BloomingtonMN.gov](mailto:sgurney@BloomingtonMN.gov)>; Bob Loken <[bob.loken@esgarch.com](mailto:bob.loken@esgarch.com)>  
**Subject:** RE: 8131 34th Ave - Stormwater Questions

Brian,

Just checking in to see if you have had a chance to review or if you have any comments. Once we get this signed off we can fulfill all our requirements for the footings and foundation permit.

**PJ DISCH, PE (MN)**  
Associate Engineer  
D 763.496.6736 | C 763.300.3596  
www.loucksinc.com

**From:** Hansen, Brian <[bhansen@BloomingtonMN.gov](mailto:bhansen@BloomingtonMN.gov)>  
**Sent:** Saturday, May 22, 2021 11:10 AM  
**To:** PJ Disch <[PDisch@loucksinc.com](mailto:PDisch@loucksinc.com)>; James Riley <[james.riley@roerscompanies.com](mailto:james.riley@roerscompanies.com)>  
**Cc:** Gruidl, Bryan <[bgruidl@BloomingtonMN.gov](mailto:bgruidl@BloomingtonMN.gov)>; Gurney, Steve <[sgurney@BloomingtonMN.gov](mailto:sgurney@BloomingtonMN.gov)>; Bob Loken <[bob.loken@esgarch.com](mailto:bob.loken@esgarch.com)>  
**Subject:** RE: 8131 34th Ave - Stormwater Questions

Thanks PJ. We will review and get back to everyone with any additional comments or questions. Have a good weekend.



**BRIAN HANSEN**  
Development Coordinator  
PH: 952-563-4543

**From:** PJ Disch <[PDisch@loucksinc.com](mailto:PDisch@loucksinc.com)>  
**Sent:** Friday, May 21, 2021 3:35 PM  
**To:** Hansen, Brian <[bhansen@BloomingtonMN.gov](mailto:bhansen@BloomingtonMN.gov)>; James Riley <[james.riley@roerscompanies.com](mailto:james.riley@roerscompanies.com)>  
**Cc:** Gruidl, Bryan <[bgruidl@BloomingtonMN.gov](mailto:bgruidl@BloomingtonMN.gov)>; Gurney, Steve <[sgurney@BloomingtonMN.gov](mailto:sgurney@BloomingtonMN.gov)>; Bob Loken <[bob.loken@esgarch.com](mailto:bob.loken@esgarch.com)>  
**Subject:** RE: 8131 34th Ave - Stormwater Questions

Brian,

Here is the revised storm sewer plan and calculations for your review.

**PJ DISCH, PE (MN)**  
Associate Engineer  
D 763.496.6736 | C 763.300.3596  
[www.loucksinc.com](http://www.loucksinc.com)

**From:** Hansen, Brian <[bhansen@BloomingtonMN.gov](mailto:bhansen@BloomingtonMN.gov)>  
**Sent:** Monday, May 17, 2021 6:49 AM  
**To:** PJ Disch <[PDisch@loucksinc.com](mailto:PDisch@loucksinc.com)>; James Riley <[james.riley@roerscompanies.com](mailto:james.riley@roerscompanies.com)>  
**Cc:** Gruidl, Bryan <[bgruidl@BloomingtonMN.gov](mailto:bgruidl@BloomingtonMN.gov)>; Gurney, Steve <[sgurney@BloomingtonMN.gov](mailto:sgurney@BloomingtonMN.gov)>; Bob Loken <[bob.loken@esgarch.com](mailto:bob.loken@esgarch.com)>  
**Subject:** RE: 8131 34th Ave - Stormwater Questions

Thanks for sharing PJ. We will review and bring up any questions or comments at our meeting tomorrow. Appreciate it.



**BRIAN HANSEN**  
Development Coordinator  
PH: 952-563-4543

**From:** PJ Disch <[PDisch@loucksinc.com](mailto:PDisch@loucksinc.com)>  
**Sent:** Friday, May 14, 2021 2:44 PM

**To:** Hansen, Brian <[bhansen@BloomingtonMN.gov](mailto:bhansen@BloomingtonMN.gov)>; James Riley <[james.riley@roerscompanies.com](mailto:james.riley@roerscompanies.com)>  
**Cc:** Gruidl, Bryan <[bgruidl@BloomingtonMN.gov](mailto:bgruidl@BloomingtonMN.gov)>; Gurney, Steve <[sgurney@BloomingtonMN.gov](mailto:sgurney@BloomingtonMN.gov)>; Bob Loken <[bob.loken@esgarch.com](mailto:bob.loken@esgarch.com)>  
**Subject:** RE: 8131 34th Ave - Stormwater Questions

Brian,

Here is a solution I think we have that could work for everyone. We will just need to get an easement to connect to the adjacent private storm sewer to the north. We should be able to meet existing rates and provide infiltration. We will use a 4.5' diameter pipe on the west to provide infiltration volume. We will use the patch of good soils at 806.00. That will than connect to the west 5' diameter tank that will provide rate control before discharging to the private storm sewer.

**PJ DISCH, PE (MN)**  
Associate Engineer  
D 763.496.6736 | C 763.300.3596  
[www.loucksinc.com](http://www.loucksinc.com)

**From:** Hansen, Brian <[bhansen@BloomingtonMN.gov](mailto:bhansen@BloomingtonMN.gov)>  
**Sent:** Tuesday, May 4, 2021 8:21 AM  
**To:** PJ Disch <[PDisch@loucksinc.com](mailto:PDisch@loucksinc.com)>; James Riley <[james.riley@roerscompanies.com](mailto:james.riley@roerscompanies.com)>  
**Cc:** Gruidl, Bryan <[bgruidl@BloomingtonMN.gov](mailto:bgruidl@BloomingtonMN.gov)>; Gurney, Steve <[sgurney@BloomingtonMN.gov](mailto:sgurney@BloomingtonMN.gov)>  
**Subject:** RE: 8131 34th Ave - Stormwater Questions

PJ,

Just following up with you on this e-mail. We acknowledge the challenges with this site as they relate to stormwater management. At our last meeting with our Water Resources Staff some potential alternative techniques were proposed such as the Stormtech system. The ultimate solution may include a combination of strategies that best fit the site.

We still would recommend maximizing the amount of runoff that can get into the infiltration chambers and gravity flow out to 34<sup>th</sup>, any additional would need to be pumped.

Some strategies that may be worth exploring are:

1. moving the watermain, which would give another 13' to work with
2. raising the elevation of the roof drains, which should get all of the building footprint into the system

It continues to be the City's desire to abandon the in-place storm pipe that outlets over the bluff. If you were to utilize this 60+ year old pipe for your site we would need to first determine it's condition and then an easement agreement between the development and the USF&W would need to be acquired to allow you to discharge over the bluff and maintain the pipe in it's current location. This process could be very lengthy based on previous experience working with USF&W on similar projects/requests.

If you have some additional designs that you would like to propose and have Staff provide feedback I'd be happy to set up a meeting with our Water Resources Staff to review and provide additional feedback. Thank you.



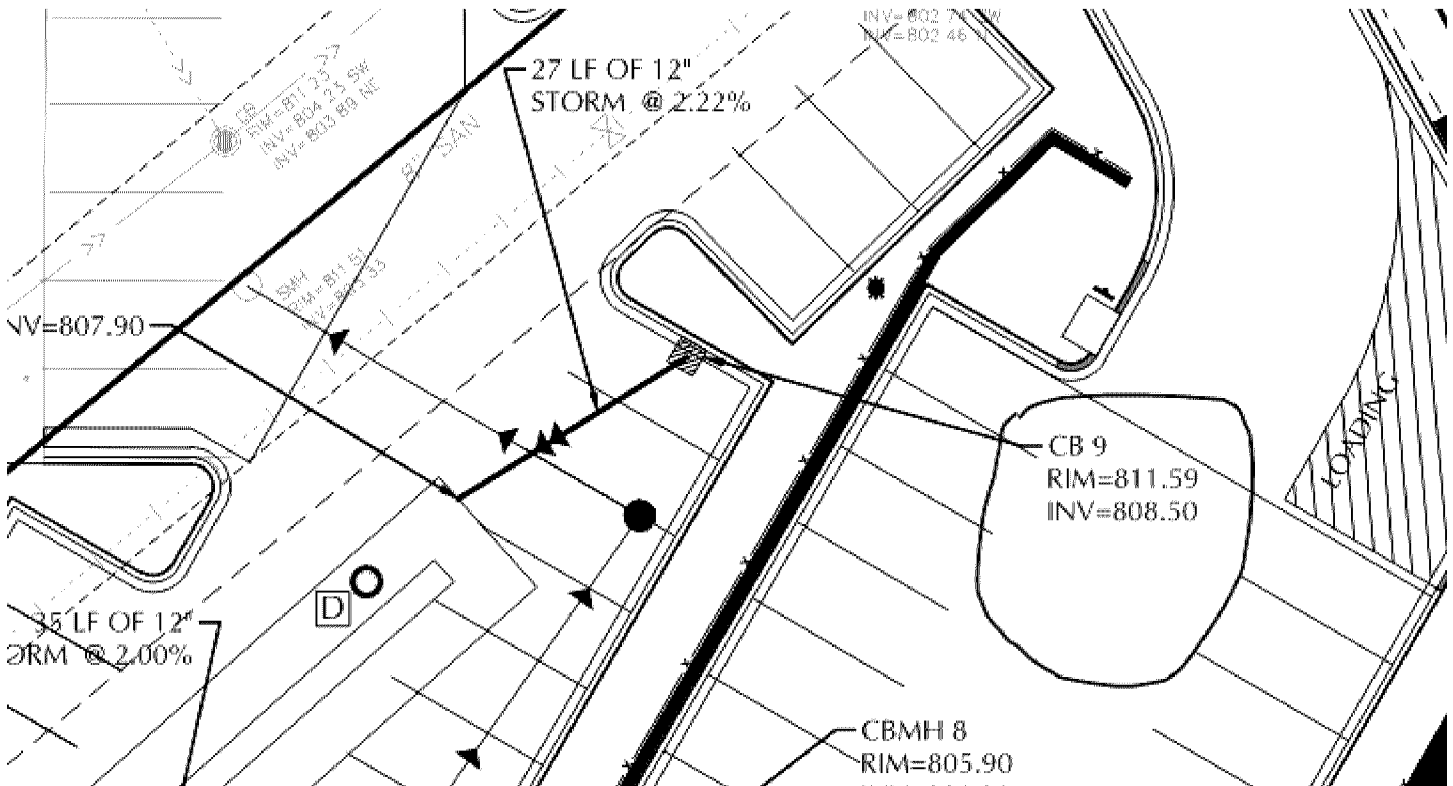
**BRIAN HANSEN**  
Development Coordinator  
PH: 952-563-4543

**From:** PJ Disch <PDisch@loucksinc.com>  
**Sent:** Tuesday, April 27, 2021 1:28 PM  
**To:** Hansen, Brian <bhansen@BloomingtonMN.gov>  
**Cc:** James Riley <james.riley@roerscompanies.com>  
**Subject:** RE: 8131 34th Ave - Stormwater Questions

Brian,

We have been digging into this some. The system you called out stormtech has a volume of 5,740 for retention volume. We need volume for stormwater bounce as well. The CMP system we have has a total volume of 17,000 cf for the treatment volume and bounce to control the runoff rate. The stormtech system only has the treatment volumes, so we will not have the volume to control the runoff rate.

Also we have CB 9 which is the runoff from the parking lot that has a rim of 811.39 which is lower than the proposed invert of 812.8 which you are calling out for our outlet connection.



**PJ DISCH, PE (MN)**  
Associate Engineer  
D 763.496.6736 | C 763.300.3596  
www.loucksinc.com

**From:** Hansen, Brian <bhansen@BloomingtonMN.gov>  
**Sent:** Wednesday, April 21, 2021 3:34 PM  
**To:** PJ Disch <PDisch@loucksinc.com>  
**Cc:** James Riley <james.riley@roerscompanies.com>  
**Subject:** RE: 8131 34th Ave - Stormwater Questions

PJ,

Thanks for the conversation this morning regarding the stormwater management for the site. As we shared with you this morning it is the City's desire to disconnect the final service from that pipe that currently drains down the bluff. I understand your concerns with the cost associated with the comment made to connect to the CB.

Our Water Resources Staff looked at the area again and believe there is a solution that would allow for the abandonment of the existing pipe and wouldn't require a lift station.

It appears there is 10' of drop across the length of the parking/drive out front of the building. Our storm line in the median (MH 85X12) is a 15" RCP @ 0.5% which has a capacity of 4.6 cfs. If we extend that 15" to the entrance, the invert would be about 812.8 at the R/W edge. Based on the Stormwater report, the peak 100-yr flow out of the vault is 5.1 cfs, so with a little creativity, you should be able to get that down to 4.6 cfs. The required retention volume is about 5,740 CF and a Stormtech system will provide that volume with a footprint of about 26' x 105'. With the lower profile and a bit of creativity we think it would be possible to get almost all of the site into a system with an outlet higher than 812.8 – especially the roof drains.

Attached is a very rough sketch showing how this might look within the ROW. If you could please look at this possible solution and let us know your thoughts. Like I've already mentioned using the existing pipe down the bluff is our last option and will create more questions that need to be answered. So before going down that route we would like to exhaust all other options.

Please feel free to follow up with any additional questions. Thanks.



**BRIAN HANSEN**  
Development Coordinator  
PH: 952-563-4543

**From:** PJ Disch <[PDisch@loucksinc.com](mailto:PDisch@loucksinc.com)>  
**Sent:** Wednesday, April 21, 2021 10:01 AM  
**To:** Hansen, Brian <[bhansen@BloomingtonMN.gov](mailto:bhansen@BloomingtonMN.gov)>  
**Cc:** James Riley <[james.riley@roerscompanies.com](mailto:james.riley@roerscompanies.com)>  
**Subject:** RE: 8131 34th Ave - Stormwater Questions

Brian,

Just a follow up from our meeting. I talked to James at Roers. I have copied him on this email. Our first preference would be to try to utilize the existing storm line as we are currently showing. We will look into it to see if we can come up with any other options. So if possible we would like help from the city to see what we need to do to work with the fish and wildlife to keep that pipe. Does the city want us to televise the existing storm line, or is that something the city can do?

**PJ DISCH, PE (MN)**  
Associate Engineer  
D 763.496.6736 | C 763.300.3596  
[www.loucksinc.com](http://www.loucksinc.com)

**From:** Hansen, Brian <[bhansen@BloomingtonMN.gov](mailto:bhansen@BloomingtonMN.gov)>  
**Sent:** Tuesday, April 20, 2021 3:14 PM  
**To:** PJ Disch <[PDisch@loucksinc.com](mailto:PDisch@loucksinc.com)>  
**Subject:** 8131 34th Ave - Stormwater Questions

Hi PJ,

Just following up on your voicemail regarding the 8131 34<sup>th</sup> Ave project and the stormwater comments. I wanted to have our Water Resources Staff involved in that conversation as they are the subject matter experts. We are available tomorrow morning up until 10:30 AM or 3:00 PM - 4:00 PM. Let me know if you have any availability during those times and I will send out a meeting invite.

If tomorrow doesn't work let me know and I can propose some additional times later this week. Thanks.



**BRIAN HANSEN** Development Coordinator

Pronouns: (he/him/his)

**PH:** 952-563-4543 **EMAIL:** [bhansen@bloomingtonmn.gov](mailto:bhansen@bloomingtonmn.gov)

1700 West 98th Street, Bloomington, MN 55431

[CONFIDENTIALITY AND PRIVACY NOTICE] Information transmitted by this email is proprietary to the City of Bloomington and is intended for use only by the individual or entity to which it is addressed, and may contain information that is private, privileged, confidential or exempt from disclosure under applicable law. If you are not the intended recipient or it appears that this mail has been forwarded to you without proper authority, you are notified that any use or dissemination of this information in any manner is strictly prohibited. In such cases, please delete this mail from your records. If you received this communication in error, please notify me promptly.