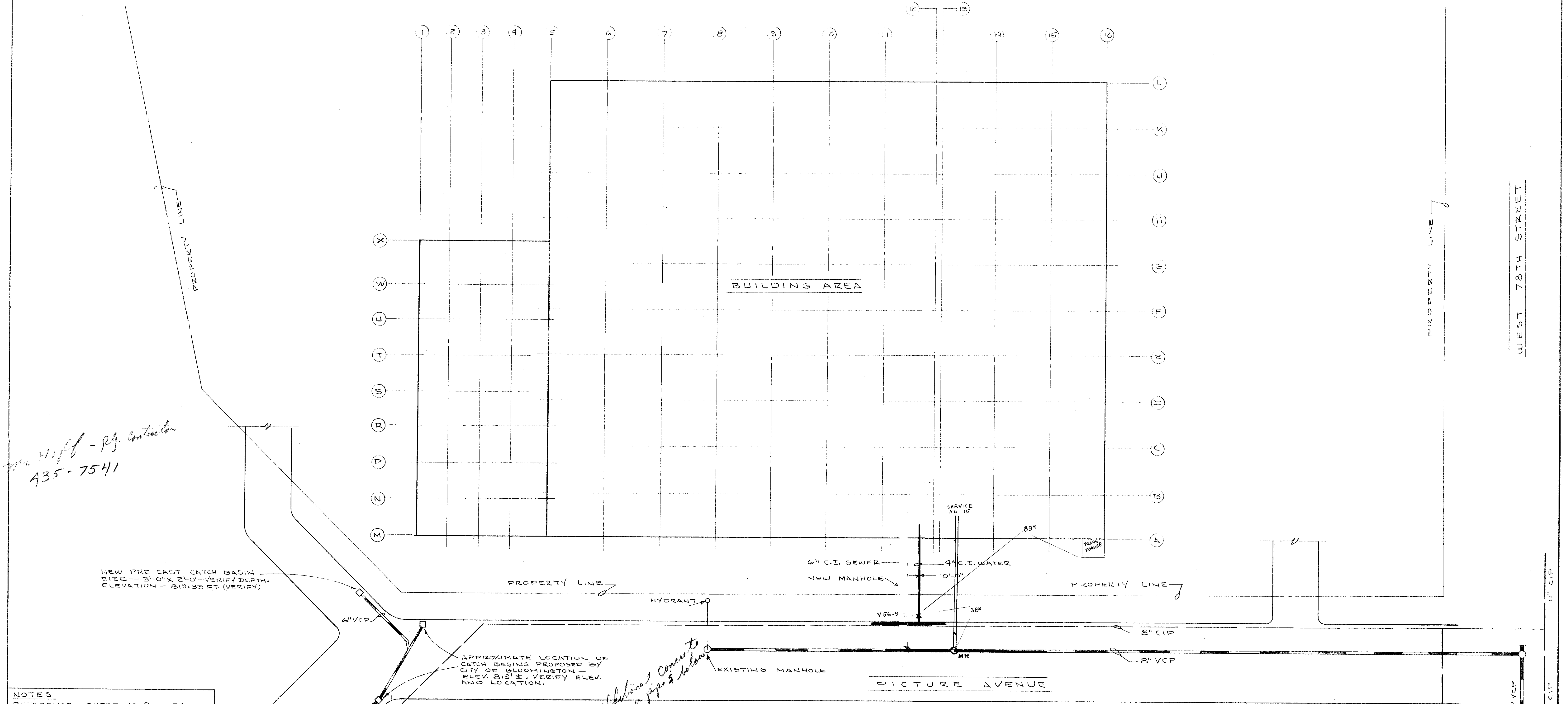


7800
Picture Dr.



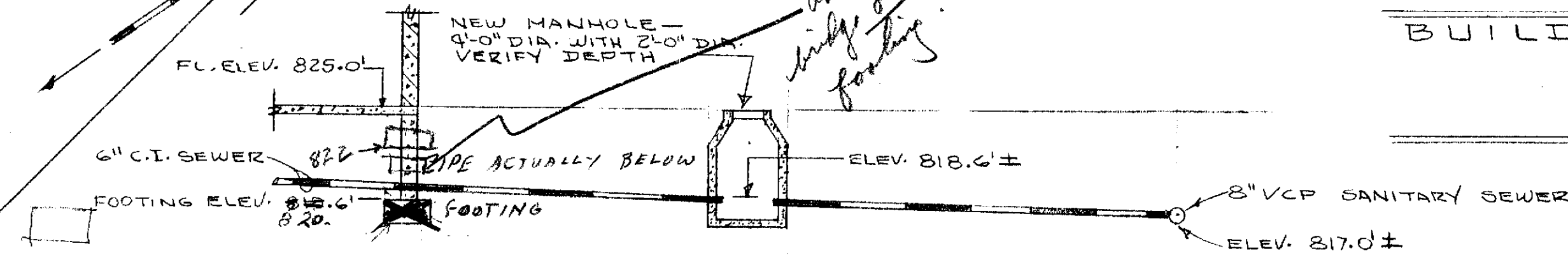
*Mr. Hoff - Proj. Contractor
435-7541*

NEW PRE-CAST CATCH BASIN
SIZE - 3'-0" X 2'-0" - VERIFY DEPTH.
ELEVATION - 819.33 FT. (VERIFY)

APPROXIMATE LOCATION OF
CATCH BASINS PROPOSED BY
CITY OF BLOOMINGTON -
ELEV. 819' ±. VERIFY ELEV.
AND LOCATION.

*Additional concrete
bridge over pipe & below
footing.*

NOTES
REFERENCE - SHEET NO. 8 OF 24
DATED MARCH 1967, BLOOMINGTON
ENGINEERING DEPARTMENT.
ARCHITECTS DRAWING NO. 1 - PLOT
PLAN.
CONTRACTOR SHALL VERIFY ALL
LOCATIONS FOR WATER & SEWER
CONNECTIONS TO BLOOMINGTON
SERVICE MAINS.
CATCH BASINS, MANHOLES, ETC.,
TO BE OF TYPE AND SIZE AS
REQUIRED BY CITY OF BLOOMINGTON
ENGINEERING DEPARTMENT.



SECTIONAL ELEVATION
SCALE - 1/8" = 1'-0"

BUILDING PLOT PLAN
SCALE - 1" = 20'-0"
N

I hereby certify that this plan, specification, or
report was prepared by me or under my direct
supervision and that I am a duly Registered
Professional Engineer under the laws of the
State of Minnesota.
Henry H. Hauer
Date - 9-9-68 Reg. No. 9421

WATER & SEWER CONNECTION
LAYOUT FOR
NEW BUILDING
NATIONAL SCHOOL STUDIOS
BLOOMINGTON MINNESOTA

HENRY H. HAUER
Consulting Engineer
6233 - 5th AVENUE SOUTH
MINNEAPOLIS 23, MINN.

DRWS. BY: H.H.H.
DATE: 9-9-68
DRAWG. NO.
68-166