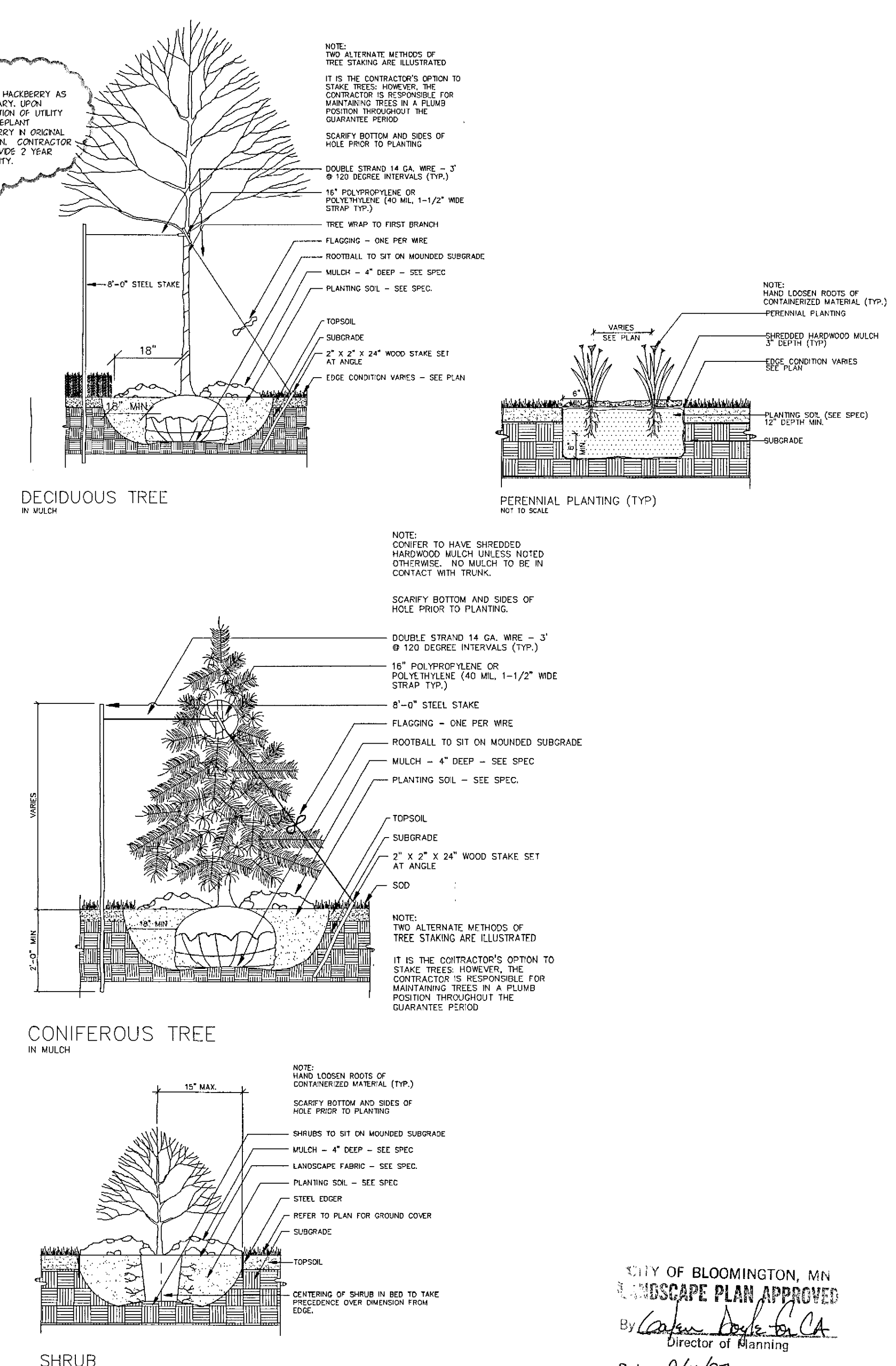


PLANTING DETAILS

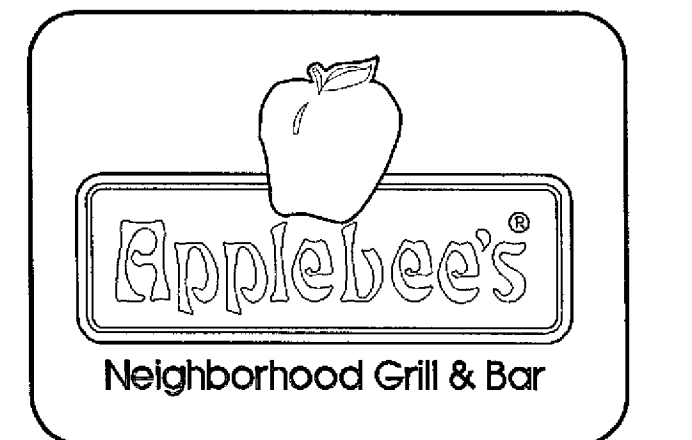


PLANTING NOTES

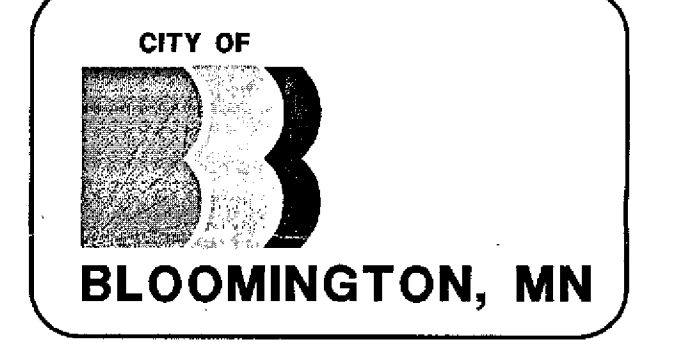
- CONTRACTOR SHALL VISIT SITE PRIOR TO SUBMITTING BID. HE SHALL INSPECT SITE AND BECOME FAMILIAR WITH EXISTING CONDITIONS RELATING TO THE NATURE AND SCOPE OF WORK.
- VERIFY LAYOUT AND ANY DIMENSIONS SHOWN AND BRING TO THE ATTENTION OF THE LANDSCAPE ARCHITECT ANY DISCREPANCIES WHICH MAY COMPROMISE THE DESIGN AND/OR INTENT OF THE PROJECT'S LAYOUT.
- ASSURE COMPLIANCE WITH ALL APPLICABLE CODES AND REGULATIONS GOVERNING THE WORK OR MATERIALS SUPPLIED.
- CONTRACTOR SHALL PROTECT ALL EXISTING ROADS, CURBS/GUTTERS, TRAILS, TREES, LAWNS AND SITE ELEMENTS DURING PLANTING OPERATIONS. ANY DAMAGE TO SAME SHALL BE REPAIRED AT NO COST TO THE OWNER.
- CONTRACTOR SHALL VERIFY ALIGNMENT AND LOCATION OF ALL UNDERGROUND AND ABOVE GRADE UTILITIES AND PROVIDE THE NECESSARY PROTECTION FOR SAME BEFORE CONSTRUCTION. MATERIAL INSTALLATION BEGINS (MINIMUM 10' - 0" CLEARANCE).
- ALL UNDERGROUND UTILITIES SHALL BE LAID SO THAT TRENCHEES DO NOT CUT THROUGH ROOT SYSTEMS OF ANY EXISTING TREES TO REMAIN.
- EXISTING CONTOURS, TRAILS, VEGETATION, CURB/GUTTER AND OTHER EXISTING ELEMENTS BASED UPON INFORMATION SUPPLIED TO LANDSCAPE ARCHITECT BY OTHERS. CONTRACTOR SHALL VERIFY ANY AND ALL DISCREPANCIES PRIOR TO CONSTRUCTION AND NOTIFY LANDSCAPE ARCHITECT OF SAME.
- THE ALIGNMENT AND GRADES OF THE PROPOSED WALKS, TRAILS AND/OR ROADWAYS ARE SUBJECT TO FIELD ADJUSTMENT REQUIRED TO CONFORM TO LOCALIZED TOPOGRAPHIC CONDITIONS AND TO MINIMIZE TREE REMOVAL AND GRADING. ANY CHANGE IN ALIGNMENT MUST BE APPROVED BY LANDSCAPE ARCHITECT.
- FILL/CUT AS NECESSARY TO PROVIDE A 1% MINIMUM GRADE AWAY FROM BLDGS. WITHIN LIMITS OF CONSTRUCTION.
- WHERE EXISTING TREES AND/OR SIGNIFICANT SHRUB MASSINGS ARE FOUND ON SITE, WHETHER SHOWN ON THE DRAWING OR NOT, THEY SHALL BE PROTECTED AND SAVED UNLESS NOTED TO BE REMOVED AND/OR ARE IN AN AREA TO BE GRADED. ANY QUESTION REGARDING WHETHER PLANT MATERIAL SHOULD REMAIN OR NOT SHALL BE BROUGHT TO THE ATTENTION OF THE LANDSCAPE ARCHITECT PRIOR TO REMOVAL.
- COORDINATE THE PHASES OF CONSTRUCTION AND PLANTING INSTALLATION WITH OTHER CONTRACTORS WORKING ON SITE.
- NO PLANTING WILL BE INSTALLED UNTIL COMPLETE GRADING AND CONSTRUCTION HAS BEEN COMPLETED IN THE IMMEDIATE AREA.
- SOD ALL DISTURBED AREAS.
- WHERE SOD/SEED ABUTS PAVED SURFACES, FINISHED GRADE OF SOD/SEED SHALL BE HELD 1" BELOW SURFACE ELEVATION OF TRAIL, SLAB, CURB, ETC.
- SOD SHALL BE LAID PARALLEL TO THE CONTOURS AND SHALL HAVE STAGGERED JOINTS ON SLOPES STEEPER THAN 3:1 OR IN DRAINAGE SWALES, THE SOD SHALL BE STAKED TO THE GROUND.
- ALL PLANT MATERIAL SHALL COMPLY WITH THE LATEST EDITION OF THE AMERICAN STANDARD FOR NURSERY STOCK, AMERICAN ASSOCIATION OF NURSERYMEN. UNLESS NOTED OTHERWISE, DECIDUOUS SHRUBS SHALL HAVE AT LEAST 5 CANES AT THE SPECIFIED SHRUB HEIGHT. ORNAMENTAL TREES SHALL HAVE NO V CROTCHES AND SHALL BEGINS BRANCHING NO LOWER THAN 3' ABOVE ROOT BALL. STREET AND BOULEVARD TREES SHALL BEGINS BRANCHING NO LOWER THAN 6' ABOVE FINISHED BUILDING FOUNDATION.
- PLAN TAKES PRECEDENCE OVER PLANT SCHEDULE IF DISCREPANCIES IN QUANTITIES EXIST. SPECIFICATIONS TAKE PRECEDENCE OVER NOTES.
- ALL PROPOSED PLANTS SHALL BE LOCATED AND STAKED AS SHOWN ON PLAN. LANDSCAPE ARCHITECT MUST APPROVE ALL STAKING OF PLANT MATERIAL PRIOR TO ANY AND ALL DIGGING.
- NO PLANT MATERIAL SUBSTITUTIONS WILL BE ACCEPTED UNLESS APPROVAL IS REQUESTED OF THE LANDSCAPE ARCHITECT BY THE LANDSCAPE ARCHITECT PRIOR TO THE SUBMISSION OF A BID AND/OR QUOTATION.
- ADJUSTMENTS IN LOCATION OF PROPOSED PLANT MATERIALS MAY BE NEEDED IN THE FIELD. SHOULD AN ADJUSTMENT BE ADVISED, THE LANDSCAPE ARCHITECT MUST BE NOTIFIED.
- ALL PLANT MATERIALS SHALL BE FERTILIZED UPON INSTALLATION WITH DRIED BONE MEAL, OTHER APPROVED FERTILIZER MIXED IN WITH THE PLANTING SOIL PER THE MANUFACTURER'S INSTRUCTIONS OR MAY BE TREATED FOR SUMMER AND FALL INSTALLATION WITH AN APPLICATION OF GRANULAR 0-20-20 OF 12 OZ PER 2.5" CALIPER PER TREE AND 6 OZ PER SHRUB WITH AN ADDITIONAL APPLICATION OF 10-10-10 THE FOLLOWING SPRING IN THE TREE SAUAGER.
- ALL PLANTS TO BE INSTALLED AS PER PLANTING DETAILS.
- ALL PLANTING AREAS RECEIVING GROUND COVER, PERENNIALS, ANNUALS, AND/OR VINES SHALL RECEIVE A MINIMUM OF 1" DEPTH OF PLANTING SOIL CONSISTING OF AT LEAST 45 PARTS TOPSOIL, 45 PARTS PEAT OR MANURE AND 10 PARTS SAND.
- WRAPPING MATERIAL SHALL BE CORRUGATED PVC PIPING 19 GREATER IN CALIBER THAN THE TREE BEING PROTECTED OR QUALITY HEAVY WATERPROOF CREPE PAPER MANUFACTURED FOR THIS PURPOSE. WRAP ALL DECIDUOUS TREES PLANTED IN THE FALL PRIOR TO 12-1 AND REMOVE ALL WRAPPING AFTER 5-1.
- STEEL EDGER TO BE USED TO CONTAIN SHRUBS, PERENNIALS AND ANNUALS WHERE BED MEETS SOD/SEED UNLESS NOTED OTHERWISE.
- ALL SHRUB BED MASSINGS ADJACENT TO BUILDING AND PARKING LOT ISLANDS TO RECEIVE 4" DEEP STONE MULCH AND FIBER MAT WEED BARRIER ALL OTHER SHRUB BED MASSINGS TO RECEIVE 4" DEEP SHREDDED HARDWOOD MULCH AND FIBER MAT WEED BARRIER.
- ALL EVERGREEN TREES TO RECEIVE 4" DEEP SHREDDED HARDWOOD MULCH WITH NO MULCH IN DIRECT CONTACT WITH TREE TRUNK.
- ALL ANNUAL AND PERENNIAL PLANTING BEDS TO RECEIVE 3" DEEP SHREDDED HARDWOOD MULCH WITH NO WEED BARRIER.
- VERIFY PROPOSED IRRIGATION SYSTEM LAYOUT AND CONFIRM COMPLETE LIMITS OF IRRIGATION PRIOR TO SUPPLYING SHOP DRAWINGS.
- LANDSCAPE CONTRACTOR SHALL BE RESPONSIBLE FOR PROVIDING AN IRRIGATION LAYOUT PLAN AND SPECIFICATION AS A PART OF THE SCOPE OF WORK WHEN BIDDING. THESE SHALL BE APPROVED BY THE LANDSCAPE ARCHITECT PRIOR TO ORDER AND/OR INSTALLATION. IT SHALL BE THE LANDSCAPE CONTRACTOR'S RESPONSIBILITY TO INSURE THAT ALL SODS/SEEDS AND PLANTED AREAS ARE IRRIGATED PROPERLY, INCLUDING THOSE AREAS DIRECTLY AROUND AND ADJUTING BUILDING FOUNDATION.
- THE LANDSCAPE CONTRACTOR SHALL PROVIDE THE OWNER WITH A WATERING/LAWN IRRIGATION SCHEDULE AS APPROPRIATE TO THE PROJECT SITE CONDITIONS AND TO PLANT MATERIAL GROWTH REQUIREMENTS.
- IF THE LANDSCAPE CONTRACTOR IS CONCERNED OR PERCEIVES ANY DEFICIENCIES IN THE PLANT SELECTIONS, SOIL CONDITIONS OR ANY OTHER SITE CONDITION WHICH MIGHT NEGATIVELY AFFECT PLANT ESTABLISHMENT, SURVIVAL OR GUARANTEE, HE MUST BRING THESE DEFICIENCIES TO THE ATTENTION OF THE LANDSCAPE ARCHITECT PRIOR TO PROCUREMENT AND/OR INSTALLATION.
- CONTRACTOR SHALL SUBMIT A WRITTEN REQUEST FOR THE OWNER ACCEPTANCE INSPECTION OF ALL LANDSCAPE AND SITE IMPROVEMENTS.
- CONTRACTOR IS RESPONSIBLE FOR ON-GOING MAINTENANCE OF ALL NEWLY INSTALLED MATERIALS UNTIL TIME OF OWNER ACCEPTANCE. ANY ACTS OF VANDALISM OR DAMAGE WHICH MAY OCCUR PRIOR TO OWNER ACCEPTANCE SHALL BE THE RESPONSIBILITY OF THE CONTRACTOR. CONTRACTOR SHALL PROVIDE THE OWNER WITH A MAINTENANCE PROGRAM INCLUDING, BUT NOT NECESSARILY LIMITED TO, PRUNING, FERTILIZATION AND DISEASE/PEST CONTROL.
- CONTRACTOR SHALL GUARANTEE NEW PLANT MATERIAL THROUGH ONE CALENDAR YEAR FROM THE DATE OF OWNER ACCEPTANCE.
- WARRANTY (ONE FULL GROWING SEASON) FOR LANDSCAPE MATERIALS SHALL BE ON THE DATE OF ACCEPTANCE BY THE LANDSCAPE ARCHITECT AFTER THE COMPLETION OF PLANTING OF ALL LANDSCAPE MATERIALS. NO PARTIAL ACCEPTANCE WILL BE CONSIDERED.
- REPRODUCIBLE AS-BUILT DRAWING(S) OF ALL LANDSCAPE INSTALLATION AND SITE IMPROVEMENTS UPON COMPLETION OF CONSTRUCTION INSTALLATION AND PRIOR TO PROJECT ACCEPTANCE.
- UNLESS NOTED OTHERWISE THE APPROPRIATE DATES FOR SPRING PLANT MATERIAL INSTALLATION AND SEED/SOD PLACEMENT IS FROM THE TIME GROUND HAS THAWED TO JUNE 15.
- FALL SODDING IS GENERALLY ACCEPTABLE FROM AUGUST 15 - NOVEMBER 1. FALL SEEDING FROM AUGUST 15 - SEPTEMBER 15. DORMANT SEEDING IN THE FALL SHALL NOT OCCUR PRIOR TO NOVEMBER 1. PLANTING OUTSIDE THESE DATES IS NOT RECOMMENDED. ANY ADJUSTMENT MUST BE APPROVED IN WRITING BY THE LANDSCAPE ARCHITECT.
- CONIFEROUS PLANTING MAY OCCUR FROM AUGUST 15 - OCTOBER 1 AND FALL DECIDUOUS PLANTING FROM THE FIRST FROST UNTIL NOVEMBER 15. PLANTING OUTSIDE THESE DATES IS NOT RECOMMENDED. ANY ADJUSTMENT MUST BE APPROVED IN WRITING BY THE LANDSCAPE ARCHITECT.
- CONTRACTOR SHALL ESTABLISH TO HIS SATISFACTION THAT SOIL AND COMPACTION CONDITIONS ARE ADEQUATE TO ALLOW FOR PROPER DRAINAGE AT AND AROUND THE BUILDING SITE.

PLANTING SCHEDULE

KEY	QTY	COMMON NAME / SCIENTIFIC NAME	ROOT	SIZE	REMARKS
DECIDUOUS TREES					
A	6	SPRING SNOWCRAB MALUS SP. (SPRINGSNOW)	BB	2-1/2"	FULL FORM
B	1	SUNBURST HONEYLOCUST GLABRISANT/RAIGANTHOS/SUNBURST	BB	2-1/2"	STRAIGHT, SINGLE LEADER FULL-CROWN
C	3	ALLEGHANY SERVICEBERRY	BB	6"	MULTI STEMMED, 3 CANE MIN.
D	2	ARIELANCHER LAEVIS PRAIRIE FIRE CRABAPPLE MALUS PRAIRIE FIRE	BB	2"	STRAIGHT, SINGLE LEADER FULL-CROWN
CONIFEROUS TREES					
E	2	BLACK HILLS SPRUCE PICEA GLAUCA DENSATA	BB	6"	FULL FORM TO GROUND
SHRUBS					
F	12	ALPINE CURRANT	POT	24"	SPACE 3'-0" O.C.
G	105	ANTHONY WATERER SPIREA SPARAEIA JAPONICA ANTHONY WATERER	POT	24"	SPACE 5'-0" O.C.
H	145	CAREFREE BEAUTY ROSE ROSA X SP. 'CAREFREE BEAUTY'	POT	24"	SPACE 3'-0" O.C.
I	84	MINT JULEP JUNIPER JUNIPERUS CHINENSIS 'MINT JULEP'	POT	36"	SPACE 4'-0" O.C.
J	2	WINGED BUONNYX BUONNYX ALATUS	POT	24"	SPACE 3'-0" O.C.
PERENNIALS					
K	96	STELLA D'ORO DAYLILY HEMEROCALLIS 'STELLA D'ORO'	POT	4"	SPACE 12" O.C.
L	55	ASSOCIATED DAYLILY HEMEROCALLIS SP.	POT	4"	SPACE 12" O.C.



APPLEBEE'S INTERNATIONAL, INC.  
4551 W. 107th Street  
Suite 100  
Overland Park, Kansas 66207  
(913)967-4005 fax(913)341-1695



BID ISSUE

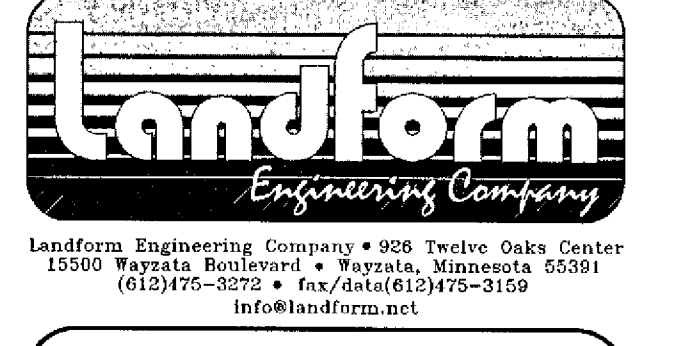
LANDSCAPE ARCHITECT:  
Damon Farber Associates  
253 Third Avenue S.  
Minneapolis, Minnesota 55415  
(612)332-7522 fax(612)332-0936  
e-mail: dfarber@aol.com

SHEET	TITLE
C01	TITLE SHEET
C11	EXISTING CONDITIONS PLAN
C21	SITE PLAN
C41	GRADING & EROSION CONTROL PLAN
C41	UTILITY PLAN
C51	SHARDED PLAN
C71	CONSTRUCTION DETAILS
C72	CONSTRUCTION DETAILS
E11	SITE ELECTRICAL PLAN
L11	LANDSCAPE PLAN
L12	LANDSCAPE SPECIFICATIONS
L21	EROSION PLAN

CITY OF BLOOMINGTON, MN  
LANDSCAPE PLAN APPROVED  
By *Carolee Doyle, CA*  
Director of Planning  
Date 9/14/97

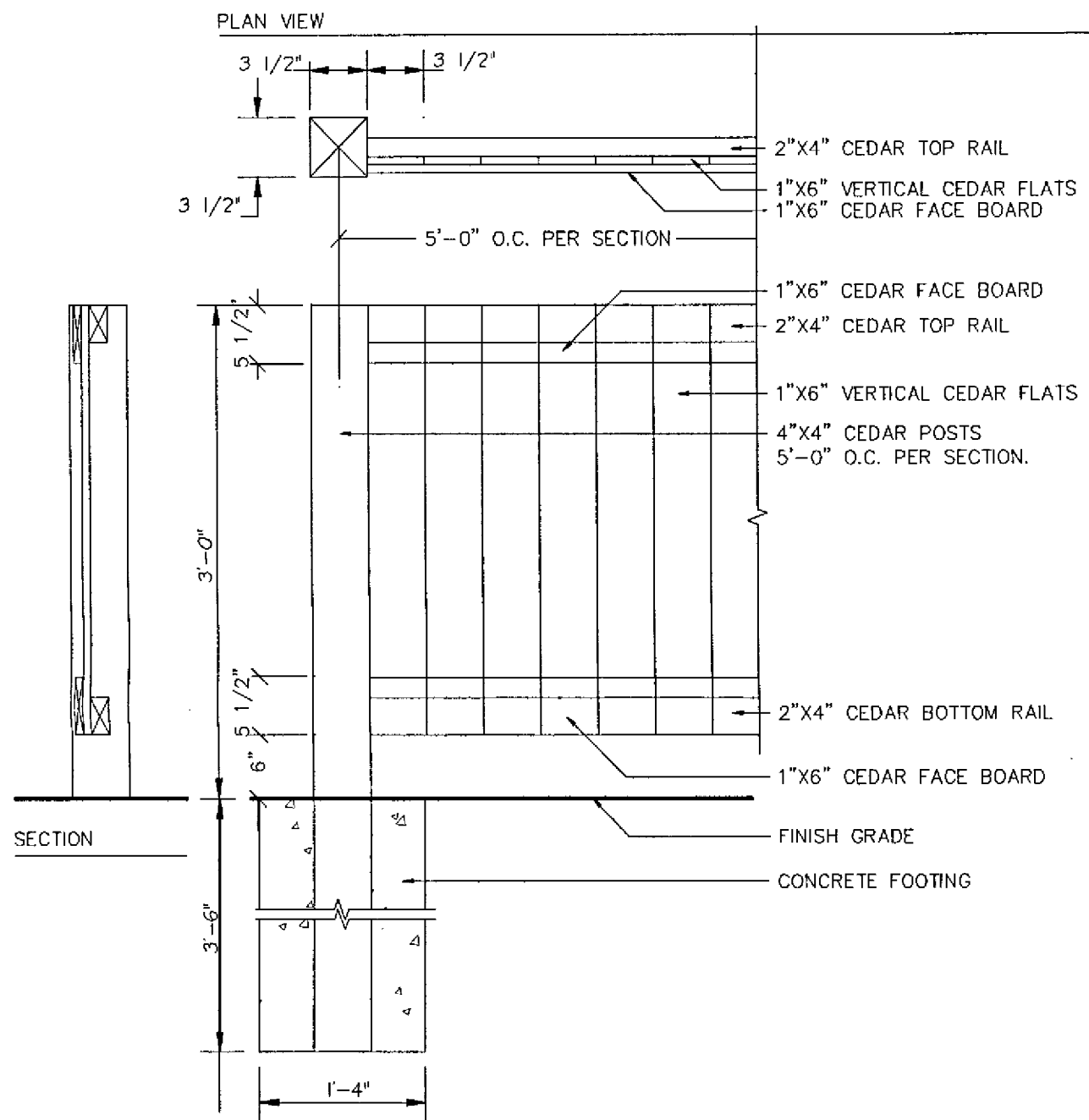
Quality Assurance Review  
By: SARA MOSE Date: 6/24/97  
CERTIFICATION  
I hereby certify that the plan was prepared by me, or under my direct supervision and that I am a duly registered Landscape Architect under the laws of the state of Minnesota.  
*Damon Farber*  
Damon Farber Registration #2530

PROJECT:  
**APPLEBEE'S RESTAURANT**  
Bloomington, Minnesota



DATE: 3/3/97  
FILE NAME: L101BLDUG  
PROJECT NO: AF91023  
RECEIVED  
DIVISION OF CITY PLANNING  
SEP 09 1997  
CITY OF BLOOMINGTON MINNESOTA  
LANDSCAPE PLAN  
L1.1

SCREEN FENCE DETAIL



WOOD FENCE DETAIL NOT TO SCALE

APPROVED  
 LANDSCAPE PLAN  
 Director of Planning  
 Date 9/11/97

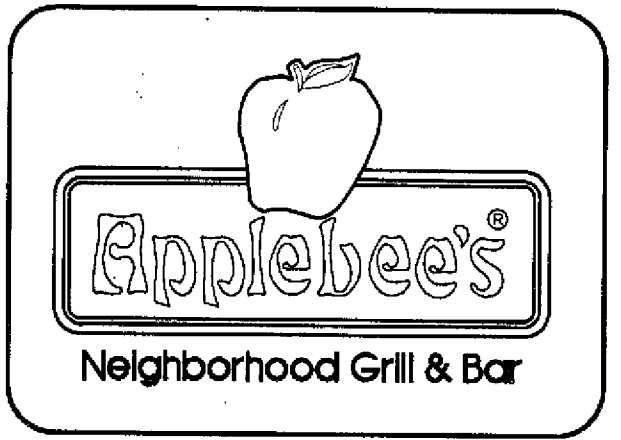
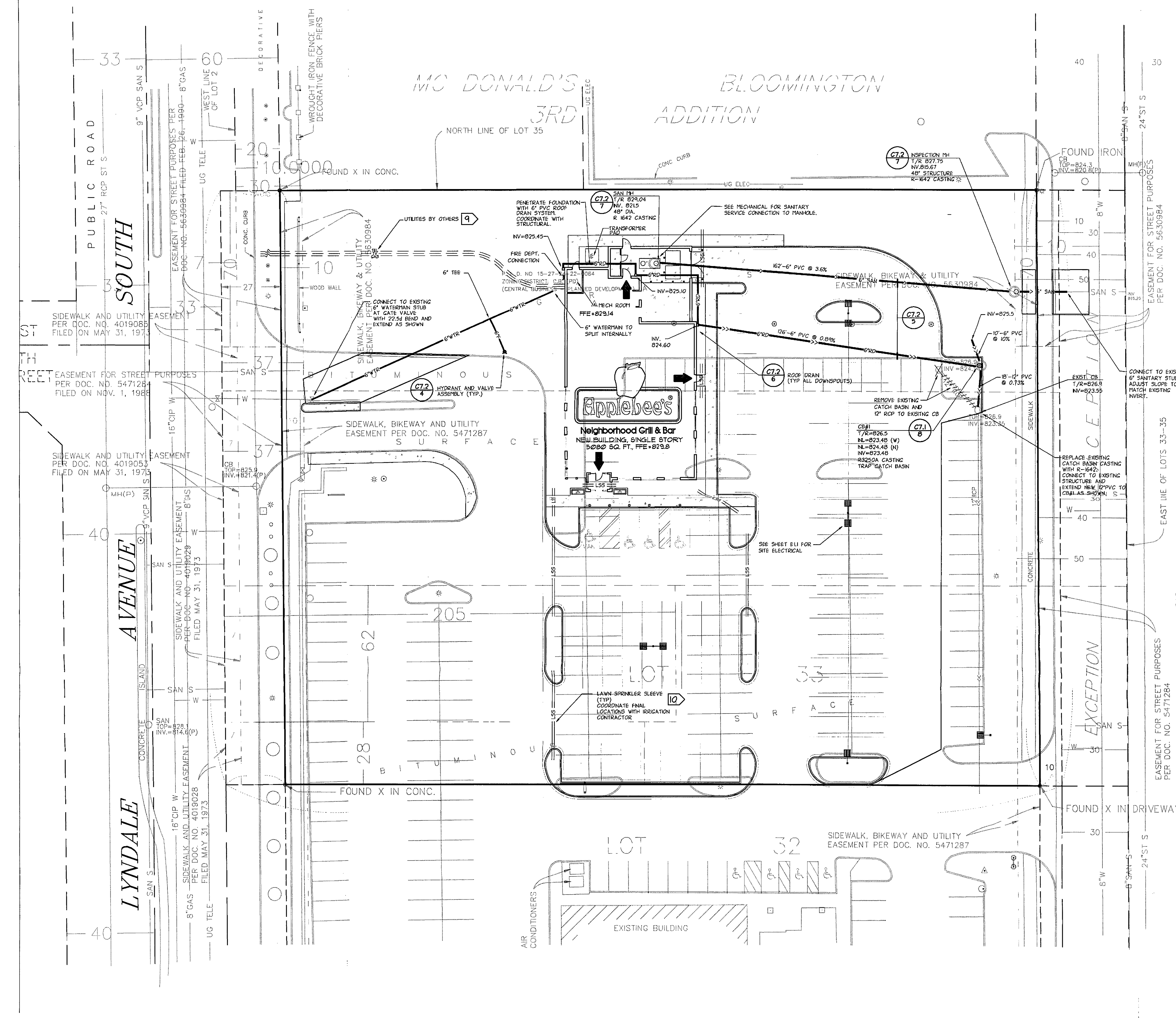
SPECIFICATIONS

SECTION 07300 - SOODING

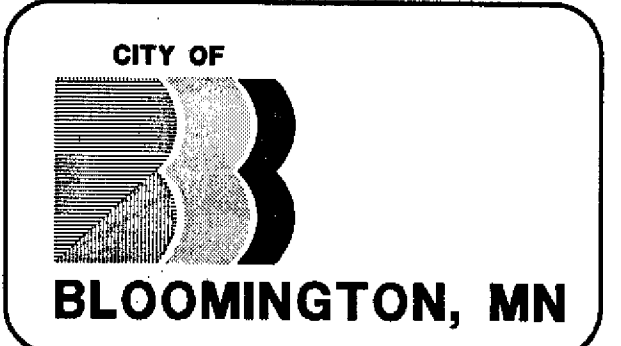
**PART 1 - GENERAL**  
**1.01 SUMMARY**  
 A. Section Includes:  
 1. Sodding  
 2. Sodding and seeding  
 B. Related Sections:  
 1. Conditions of the Contract and Division 1 - General Requirements govern provisions of the section.  
 2. Section 02200 - Earthwork  
 3. Section 02300 - Sodding  
 4. Section 02950 - Trees, Shrubs and Groundcovers  
**1.02 REFERENCE**  
 A. Minnesota Department of Transportation, Standard Specifications for Construction, 1995 Edition, including all Supplements.  
 B. American Sod Producers Association, Inc. (ASPA), Guideline Specifications to Sodding (Guidelines).  
 C. Federal Specification (Fed. Spec.), O-F-2416, Fertilizers, Mixed, Commercial.  
**1.03 PROTECTION**  
 A. Minimize: Carefully mark benchmarks, monuments and other reference points, if disturbed or destroyed, have replaced or reestablished by a registered surveyor as Contractor's expense.  
 B. Protect: Contractor shall protect all that is to remain and shall conduct all sodding operations in a manner that will not damage or jeopardize the surrounding plants. He demarcate the Division as proposed or to finish.  
**1.04 SUBMITTALS**  
 A. Submit soil test results to landscape architect prior to beginning of sodding operations.

**PART 2 - PRODUCTS**  
**2.01 SOD**  
 A. Sod shall be sown on a prepared and compacted subgrade.  
 B. Sod shall be used in all areas to be sodded, and shall require the following minimum:  
 Botanical Name: Kentucky Blue Grass (Poa)  
 Poa pratensis  
 Common Name: Kentucky Blue Grass  
 Acceptable varieties include: polo, nelson, nugget, nugget, lush, dandy and parade.  
 C. Sod shall be free from noxious weeds, relatively free from old weeds and free from roots, stones and any other objectionable materials. Sod shall resist normal handling without undue breakage or injury.  
 D. Before sod is cut, it shall be rolled free of debris and to a uniform thickness of approximately 2".  
 E. Sod shall be cut in uniform strips 18" wide and to a uniform thickness so a dense root system will be retained, but be exposed on the bottom side of the sod. When sod is cut, it shall be sufficiently moist to withstand transport and handling during transportation operations. If necessary, sod shall be watered before cutting.  
**2.02 FERTILIZER**  
 A. Fertilizer: Shall be a commercial formula containing at least the minimum analysis of 0% total nitrogen, 20% phosphate, and 20% water soluble potash (0-20-20) applied at the rate of 20 pounds per 1000 square feet.  
**2.03 WATER**  
 A. Contractor shall supply water in accordance to ensure that plants remain uniformly moist and maintained in a root condition until the work has been approved by the landscape architect and responsibility for maintenance accepted by the Owner.  
**2.04 TOPSOIL**  
 A. Topsoil shall be obtained from the soil horizon normally deposited as "A" or "B" as defined by the Science Service and approved by the landscape architect. Topsoil shall be obtained from the same source and shall meet the following requirements:  
 Minimum passes No. 10 sieve 95%  
 No. 20 sieve 95%  
 No. 40 sieve 95%  
 No. 60 sieve 95%  
 No. 100 sieve 95%  
 No. 200 sieve 95%  
 No. 425 sieve 95%  
 No. 600 sieve 95%  
 No. 850 sieve 95%  
 No. 1060 sieve 95%  
 No. 1490 sieve 95%  
 No. 2000 sieve 95%  
 No. 2800 sieve 95%  
 No. 3540 sieve 95%  
 No. 4750 sieve 95%  
 No. 6000 sieve 95%  
 No. 7500 sieve 95%  
 No. 10000 sieve 95%  
 No. 15000 sieve 95%  
 No. 20000 sieve 95%  
 No. 25000 sieve 95%  
 No. 30000 sieve 95%  
 No. 35000 sieve 95%  
 No. 40000 sieve 95%  
 No. 45000 sieve 95%  
 No. 50000 sieve 95%  
 No. 55000 sieve 95%  
 No. 60000 sieve 95%  
 No. 65000 sieve 95%  
 No. 70000 sieve 95%  
 No. 75000 sieve 95%  
 No. 80000 sieve 95%  
 No. 85000 sieve 95%  
 No. 90000 sieve 95%  
 No. 95000 sieve 95%  
 No. 100000 sieve 95%  
 No. 105000 sieve 95%  
 No. 110000 sieve 95%  
 No. 115000 sieve 95%  
 No. 120000 sieve 95%  
 No. 125000 sieve 95%  
 No. 130000 sieve 95%  
 No. 135000 sieve 95%  
 No. 140000 sieve 95%  
 No. 145000 sieve 95%  
 No. 150000 sieve 95%  
 No. 155000 sieve 95%  
 No. 160000 sieve 95%  
 No. 165000 sieve 95%  
 No. 170000 sieve 95%  
 No. 175000 sieve 95%  
 No. 180000 sieve 95%  
 No. 185000 sieve 95%  
 No. 190000 sieve 95%  
 No. 195000 sieve 95%  
 No. 200000 sieve 95%  
 No. 205000 sieve 95%  
 No. 210000 sieve 95%  
 No. 215000 sieve 95%  
 No. 220000 sieve 95%  
 No. 225000 sieve 95%  
 No. 230000 sieve 95%  
 No. 235000 sieve 95%  
 No. 240000 sieve 95%  
 No. 245000 sieve 95%  
 No. 250000 sieve 95%  
 No. 255000 sieve 95%  
 No. 260000 sieve 95%  
 No. 265000 sieve 95%  
 No. 270000 sieve 95%  
 No. 275000 sieve 95%  
 No. 280000 sieve 95%  
 No. 285000 sieve 95%  
 No. 290000 sieve 95%  
 No. 295000 sieve 95%  
 No. 300000 sieve 95%  
 No. 305000 sieve 95%  
 No. 310000 sieve 95%  
 No. 315000 sieve 95%  
 No. 320000 sieve 95%  
 No. 325000 sieve 95%  
 No. 330000 sieve 95%  
 No. 335000 sieve 95%  
 No. 340000 sieve 95%  
 No. 345000 sieve 95%  
 No. 350000 sieve 95%  
 No. 355000 sieve 95%  
 No. 360000 sieve 95%  
 No. 365000 sieve 95%  
 No. 370000 sieve 95%  
 No. 375000 sieve 95%  
 No. 380000 sieve 95%  
 No. 385000 sieve 95%  
 No. 390000 sieve 95%  
 No. 395000 sieve 95%  
 No. 400000 sieve 95%  
 No. 405000 sieve 95%  
 No. 410000 sieve 95%  
 No. 415000 sieve 95%  
 No. 420000 sieve 95%  
 No. 425000 sieve 95%  
 No. 430000 sieve 95%  
 No. 435000 sieve 95%  
 No. 440000 sieve 95%  
 No. 445000 sieve 95%  
 No. 450000 sieve 95%  
 No. 455000 sieve 95%  
 No. 460000 sieve 95%  
 No. 465000 sieve 95%  
 No. 470000 sieve 95%  
 No. 475000 sieve 95%  
 No. 480000 sieve 95%  
 No. 485000 sieve 95%  
 No. 490000 sieve 95%  
 No. 495000 sieve 95%  
 No. 500000 sieve 95%  
 No. 505000 sieve 95%  
 No. 510000 sieve 95%  
 No. 515000 sieve 95%  
 No. 520000 sieve 95%  
 No. 525000 sieve 95%  
 No. 530000 sieve 95%  
 No. 535000 sieve 95%  
 No. 540000 sieve 95%  
 No. 545000 sieve 95%  
 No. 550000 sieve 95%  
 No. 555000 sieve 95%  
 No. 560000 sieve 95%  
 No. 565000 sieve 95%  
 No. 570000 sieve 95%  
 No. 575000 sieve 95%  
 No. 580000 sieve 95%  
 No. 585000 sieve 95%  
 No. 590000 sieve 95%  
 No. 595000 sieve 95%  
 No. 600000 sieve 95%  
 No. 605000 sieve 95%  
 No. 610000 sieve 95%  
 No. 615000 sieve 95%  
 No. 620000 sieve 95%  
 No. 625000 sieve 95%  
 No. 630000 sieve 95%  
 No. 635000 sieve 95%  
 No. 640000 sieve 95%  
 No. 645000 sieve 95%  
 No. 650000 sieve 95%  
 No. 655000 sieve 95%  
 No. 660000 sieve 95%  
 No. 665000 sieve 95%  
 No. 670000 sieve 95%  
 No. 675000 sieve 95%  
 No. 680000 sieve 95%  
 No. 685000 sieve 95%  
 No. 690000 sieve 95%  
 No. 695000 sieve 95%  
 No. 700000 sieve 95%  
 No. 705000 sieve 95%  
 No. 710000 sieve 95%  
 No. 715000 sieve 95%  
 No. 720000 sieve 95%  
 No. 725000 sieve 95%  
 No. 730000 sieve 95%  
 No. 735000 sieve 95%  
 No. 740000 sieve 95%  
 No. 745000 sieve 95%  
 No. 750000 sieve 95%  
 No. 755000 sieve 95%  
 No. 760000 sieve 95%  
 No. 765000 sieve 95%  
 No. 770000 sieve 95%  
 No. 775000 sieve 95%  
 No. 780000 sieve 95%  
 No. 785000 sieve 95%  
 No. 790000 sieve 95%  
 No. 795000 sieve 95%  
 No. 800000 sieve 95%  
 No. 805000 sieve 95%  
 No. 810000 sieve 95%  
 No. 815000 sieve 95%  
 No. 820000 sieve 95%  
 No. 825000 sieve 95%  
 No. 830000 sieve 95%  
 No. 835000 sieve 95%  
 No. 840000 sieve 95%  
 No. 845000 sieve 95%  
 No. 850000 sieve 95%  
 No. 855000 sieve 95%  
 No. 860000 sieve 95%  
 No. 865000 sieve 95%  
 No. 870000 sieve 95%  
 No. 875000 sieve 95%  
 No. 880000 sieve 95%  
 No. 885000 sieve 95%  
 No. 890000 sieve 95%  
 No. 895000 sieve 95%  
 No. 900000 sieve 95%  
 No. 905000 sieve 95%  
 No. 910000 sieve 95%  
 No. 915000 sieve 95%  
 No. 920000 sieve 95%  
 No. 925000 sieve 95%  
 No. 930000 sieve 95%  
 No. 935000 sieve 95%  
 No. 940000 sieve 95%  
 No. 945000 sieve 95%  
 No. 950000 sieve 95%  
 No. 955000 sieve 95%  
 No. 960000 sieve 95%  
 No. 965000 sieve 95%  
 No. 970000 sieve 95%  
 No. 975000 sieve 95%  
 No. 980000 sieve 95%  
 No. 985000 sieve 95%  
 No. 990000 sieve 95%  
 No. 995000 sieve 95%  
 No. 1000000 sieve 95%

**2.05 VALVES**  
 A. 3/4" Brass Quick Coupler Valve shall be provided to vent the system by the blowout method using two valve keys.  
 B. Automatic Release Control Valve shall operate each zone and shall be used as per manufacturer's recommendations. Valves shall be located in A/E/T/E/K or equal location with cover marked with the zone number. Valves shall be capable of being hit normally.  
 C. Backflow Preventers shall be pressure or reduced pressure depending upon the dropped water pressure for the area and location of water source. Backflow to the Felo or approved equal and installed per manufacturer's guidelines and city/state codes. Backflow preventer to be located in the building unless otherwise noted. Same type of backflow preventer to be used to Landscape Architect for approval.  
**2.06 OUTLETS**  
 A. Sprinkler Heads shall be of the appropriate type as recommended by the manufacturer.  
**2.07 WIRE**  
 A. Color coded control wire shall be Underwriter's Laboratory 14 gauge mm. wire approved for direct burial or required by control equipment. Connections shall be waterproof type.  
**2.08 BOOSTER PUMP**  
 A. The contractor shall be responsible to properly size and provide, if necessary, a booster pump as required to comply with manufacturer's design pressure, specified design pressure and city/state codes.  
**PART 3 - EXECUTION**  
**3.01 PROTECTION**  
 A. Protect trees, shrubs, lawn, sidewalks, drives, curbs and other features on or adjacent to the site from damage from the work of the section.  
**3.02 WORKSHIP**  
 A. All material shall be installed in accordance with local, state and federal codes and in accordance with approved design drawings and the manufacturer's recommendations.  
**3.03 EXAMINATION**  
 A. Verify site conditions.  
 B. Verify location of existing utilities.  
 C. Verify that required utilities are available and that adequate water pressure is available and in proper location, and ready for use.  
**3.04 WATER SUPPLY**  
 A. The no existing non fire or industrial in drains.  
 B. Install the irrigation system from the appropriate source in the building and take the system from the water source through the building with the use of:  
 1. 1/2" NPT  
 2. 1/2" NPT  
 3. 1/2" NPT  
 4. 1/2" NPT  
 5. 1/2" NPT  
 6. 1/2" NPT  
 7. 1/2" NPT  
 8. 1/2" NPT  
 9. 1/2" NPT  
 10. 1/2" NPT  
 11. 1/2" NPT  
 12. 1/2" NPT  
 13. 1/2" NPT  
 14. 1/2" NPT  
 15. 1/2" NPT  
 16. 1/2" NPT  
 17. 1/2" NPT  
 18. 1/2" NPT  
 19. 1/2" NPT  
 20. 1/2" NPT  
 21. 1/2" NPT  
 22. 1/2" NPT  
 23. 1/2" NPT  
 24. 1/2" NPT  
 25. 1/2" NPT  
 26. 1/2" NPT  
 27. 1/2" NPT  
 28. 1/2" NPT  
 29. 1/2" NPT  
 30. 1/2" NPT  
 31. 1/2" NPT  
 32. 1/2" NPT  
 33. 1/2" NPT  
 34. 1/2" NPT  
 35. 1/2" NPT  
 36. 1/2" NPT  
 37. 1/2" NPT  
 38. 1/2" NPT  
 39. 1/2" NPT  
 40. 1/2" NPT  
 41. 1/2" NPT  
 42. 1/2" NPT  
 43. 1/2" NPT  
 44. 1/2" NPT  
 45. 1/2" NPT  
 46. 1/2" NPT  
 47. 1/2" NPT  
 48. 1/2" NPT  
 49. 1/2" NPT  
 50. 1/2" NPT  
 51. 1/2" NPT  
 52. 1/2" NPT  
 53. 1/2" NPT  
 54. 1/2" NPT  
 55. 1/2" NPT  
 56. 1/2" NPT  
 57. 1/2" NPT  
 58. 1/2" NPT  
 59. 1/2" NPT  
 60. 1/2" NPT  
 61. 1/2" NPT  
 62. 1/2" NPT  
 63. 1/2" NPT  
 64. 1/2" NPT  
 65. 1/2" NPT  
 66. 1/2" NPT  
 67. 1/2" NPT  
 68. 1/2" NPT  
 69. 1/2" NPT  
 70. 1/2" NPT  
 71. 1/2" NPT  
 72. 1/2" NPT  
 73. 1/2" NPT  
 74. 1/2" NPT  
 75. 1/2" NPT  
 76. 1/2" NPT  
 77. 1/2" NPT  
 78. 1/2" NPT  
 79. 1/2" NPT  
 80. 1/2" NPT  
 81. 1/2" NPT  
 82. 1/2" NPT  
 83. 1/2" NPT  
 84. 1/2" NPT  
 85. 1/2" NPT  
 86. 1/2" NPT  
 87. 1/2" NPT  
 88. 1/2" NPT  
 89. 1/2" NPT  
 90. 1/2" NPT  
 91. 1/2" NPT  
 92. 1/2" NPT  
 93. 1/2" NPT  
 94. 1/2" NPT  
 95. 1/2" NPT  
 96. 1/2" NPT  
 97. 1/2" NPT  
 98. 1/2" NPT  
 99. 1/2" NPT  
 100. 1/2" NPT  
 101. 1/2" NPT  
 102. 1/2" NPT  
 103. 1/2" NPT  
 104. 1/2" NPT  
 105. 1/2" NPT  
 106. 1/2" NPT  
 107. 1/2" NPT  
 108. 1/2" NPT  
 109. 1/2" NPT  
 110. 1/2" NPT  
 111. 1/2" NPT  
 112. 1/2" NPT  
 113. 1/2" NPT  
 114. 1/2" NPT  
 115. 1/2" NPT  
 116. 1/2" NPT  
 117. 1/2" NPT  
 118. 1/2" NPT  
 119. 1/2" NPT  
 120. 1/2" NPT  
 121. 1/2" NPT  
 122. 1/2" NPT  
 123. 1/2" NPT  
 124. 1/2" NPT  
 125. 1/2" NPT  
 126. 1/2" NPT  
 127. 1/2" NPT  
 128. 1/2" NPT  
 129. 1/2" NPT  
 130. 1/2" NPT  
 131. 1/2" NPT  
 132. 1/2" NPT  
 133. 1/2" NPT  
 134. 1/2" NPT  
 135. 1/2" NPT  
 136. 1/2" NPT  
 137. 1/2" NPT  
 138. 1/2" NPT  
 139. 1/2" NPT  
 140. 1/2" NPT  
 141. 1/2" NPT  
 142. 1/2" NPT  
 143. 1/2" NPT  
 144. 1/2" NPT  
 145. 1/2" NPT  
 146. 1/2" NPT  
 147. 1/2" NPT  
 148. 1/2" NPT  
 149. 1/2" NPT  
 150. 1/2" NPT  
 151. 1/2" NPT  
 152. 1/2" NPT  
 153. 1/2" NPT  
 154. 1/2" NPT  
 155. 1/2" NPT  
 156. 1/2" NPT  
 157. 1/2" NPT  
 158. 1/2" NPT  
 159. 1/2" NPT  
 160. 1/2" NPT  
 161. 1/2" NPT  
 162. 1/2" NPT  
 163. 1/2" NPT  
 164. 1/2" NPT  
 165. 1/2" NPT  
 166. 1/2" NPT  
 167. 1/2" NPT  
 168. 1/2" NPT  
 169. 1/2" NPT  
 170. 1/2" NPT  
 171. 1/2" NPT  
 172. 1/2" NPT  
 173. 1/2" NPT  
 174. 1/2" NPT  
 175. 1/2" NPT  
 176. 1/2" NPT  
 177. 1/2" NPT  
 178. 1/2" NPT  
 179. 1/2" NPT  
 180. 1/2" NPT  
 181. 1/2" NPT  
 182. 1/2" NPT  
 183. 1/2" NPT  
 184. 1/2" NPT  
 185. 1/2" NPT  
 186. 1/2" NPT  
 187. 1/2" NPT  
 188. 1/2" NPT  
 189. 1/2" NPT  
 190. 1/2" NPT  
 191. 1/2" NPT  
 192. 1/2" NPT  
 193. 1/2" NPT  
 194. 1/2" NPT  
 195. 1/2" NPT  
 196. 1/2" NPT  
 197. 1/2" NPT  
 198. 1/2" NPT  
 199. 1/2" NPT  
 200. 1/2" NPT  
 201. 1/2" NPT  
 202. 1/2" NPT  
 203. 1/2" NPT  
 204. 1/2" NPT  
 205. 1/2" NPT  
 206. 1/2" NPT  
 207. 1/2" NPT  
 208. 1/2" NPT  
 209. 1/2" NPT  
 210. 1/2" NPT  
 211. 1/2" NPT  
 212. 1/2" NPT  
 213. 1/2" NPT  
 214. 1/2" NPT  
 215. 1/2" NPT  
 216. 1/2" NPT  
 217. 1/2" NPT  
 218. 1/2" NPT  
 219. 1/2" NPT  
 220. 1/2" NPT  
 221. 1/2" NPT  
 222. 1/2" NPT  
 223. 1/2" NPT  
 224. 1/2" NPT  
 225. 1/2" NPT  
 226. 1/2" NPT  
 227. 1/2" NPT  
 228. 1/2" NPT  
 229. 1/2" NPT  
 230. 1/2" NPT  
 231. 1/2" NPT  
 232. 1/2" NPT  
 233. 1/2" NPT  
 234. 1/2" NPT  
 235. 1/2" NPT  
 236. 1/2" NPT  
 237. 1/2" NPT  
 238. 1/2" NPT  
 239. 1/2" NPT  
 240. 1/2" NPT  
 241. 1/2" NPT  
 242. 1/2" NPT  
 243. 1/2" NPT  
 244. 1/2" NPT  
 245. 1/2" NPT  
 246. 1/2" NPT  
 247. 1/2" NPT  
 248. 1/2" NPT  
 249. 1/2" NPT  
 250. 1/2" NPT  
 251. 1/2" NPT  
 252. 1/2" NPT  
 253. 1/2" NPT  
 254. 1/2" NPT  
 255. 1/2" NPT  
 256. 1/2" NPT  
 257. 1/2" NPT  
 258. 1/2" NPT  
 259. 1/2" NPT  
 260. 1/2" NPT  
 261. 1/2" NPT  
 262. 1/2" NPT  
 263. 1/2" NPT  
 264. 1/2" NPT  
 265. 1/2" NPT  
 266. 1/2" NPT  
 267. 1/2" NPT  
 268. 1/2" NPT  
 269. 1/2" NPT  
 270. 1/2" NPT  
 271. 1/2" NPT  
 272. 1/2" NPT  
 273. 1/2" NPT  
 274. 1/2" NPT  
 275. 1/2" NPT  
 276. 1/2" NPT  
 277. 1/2" NPT  
 278. 1/2" NPT  
 279. 1/2" NPT  
 280. 1/2" NPT  
 281. 1/2" NPT  
 282. 1/2" NPT  
 283. 1/2" NPT  
 284. 1/2" NPT  
 285. 1/2" NPT  
 286. 1/2" NPT  
 287. 1/2" NPT  
 288. 1/2" NPT  
 289. 1/2" NPT  
 290. 1/2" NPT  
 291. 1/2" NPT  
 292. 1/2" NPT  
 293. 1/2" NPT  
 294. 1/2" NPT  
 295. 1/2" NPT  
 296. 1/2" NPT  
 297. 1/2" NPT  
 298. 1/2" NPT  
 299. 1/2" NPT  
 300. 1/2" NPT  
 301. 1/2" NPT  
 302. 1/2" NPT  
 303. 1/2" NPT  
 304. 1/2" NPT  
 305. 1/2" NPT  
 306. 1/2" NPT  
 307. 1/2" NPT  
 308. 1/2" NPT  
 309. 1/2" NPT  
 310. 1/2" NPT  
 311. 1/2" NPT  
 312. 1/2" NPT  
 313. 1/2" NPT  
 314. 1/2" NPT  
 315. 1/2" NPT  
 316. 1/2" NPT  
 317. 1/2" NPT  
 318. 1/2" NPT  
 319. 1/2" NPT  
 320. 1/2" NPT  
 321. 1/2" NPT  
 322. 1/2" NPT  
 323. 1/2" NPT  
 324. 1/2" NPT  
 325. 1/2" NPT  
 326. 1/2" NPT  
 327. 1/2" NPT  
 328. 1/2" NPT  
 329. 1/2" NPT  
 330. 1/2" NPT  
 331. 1/2" NPT  
 332. 1/2" NPT  
 333. 1/2" NPT  
 334. 1/2" NPT  
 335. 1/2" NPT  
 336. 1/2" NPT  
 337. 1/2" NPT  
 338. 1/2" NPT  
 339. 1/2" NPT  
 340. 1/2" NPT  
 341. 1/2" NPT  
 342. 1/2" NPT  
 343. 1/2" NPT  
 344. 1/2" NPT  
 345. 1/2" NPT  
 346. 1/2" NPT  
 347. 1/2" NPT  
 348. 1/2" NPT  
 349. 1/2" NPT  
 350. 1/2" NPT  
 351. 1/2" NPT  
 352. 1/2" NPT  
 353. 1/2" NPT  
 354. 1/2" NPT  
 355. 1/2" NPT  
 356. 1/2" NPT  
 357. 1/2" NPT  
 358. 1/2" NPT  
 359. 1/2" NPT  
 360. 1/2" NPT  
 361. 1/2" NPT  
 362. 1/2" NPT  
 363. 1/2" NPT  
 364. 1/2" NPT  
 365. 1/2" NPT  
 366. 1/2" NPT  
 367. 1/2" NPT  
 368. 1/2" NPT  
 369. 1/2" NPT  
 370. 1/2" NPT  
 371. 1/2" NPT  
 372. 1/2" NPT  
 373. 1/2" NPT  
 374. 1/2" NPT  
 375. 1/2" NPT  
 376. 1/2" NPT  
 377. 1/2" NPT  
 378. 1/2" NPT  
 379. 1/2" NPT  
 380. 1/2" NPT  
 381. 1/2" NPT  
 382. 1/2" NPT  
 383. 1/2" NPT  
 384. 1/2" NPT  
 385. 1/2" NPT  
 386. 1/2" NPT  
 387. 1/2" NPT  
 388. 1/2" NPT  
 389. 1/2" NPT  
 390. 1/2" NPT  
 391. 1/2" NPT  
 392. 1/2" NPT  
 393. 1/2" NPT  
 394. 1/2" NPT  
 395. 1/2" NPT  
 396. 1/2" NPT  
 397. 1/2" NPT  
 398. 1/2" NPT  
 399. 1/2" NPT  
 400. 1/2" NPT  
 401. 1/2" NPT  
 402. 1/2" NPT  
 403. 1/2" NPT  
 404. 1/2" NPT



APPLEBEE'S INTERNATIONAL, INC.  
4551 W. 107th Street  
Suite 100  
Overland Park, Kansas 66207  
(913)967-4005 fax(913)941-1695



BID ISSUE

- NOTES:
1. HANTAN 7.5 COVER ON ALL NEW WATERMAIN.
  2. PIPE LENGTHS SHOWN ARE MEASURED FROM CENTER OF STRUCTURE TO CENTER OF STRUCTURE OR END OF FLARED END SECTION.
  3. PIPE MATERIALS: WATERMAIN: DP CLASS 52; WASTE SERVICE: 12" COVER DOMESTIC TYPE 'X' SAN SEWER: PVC 300 26; STREET SEWER: 12" RCP CLASS 5.
  4. SEE ELECTRICAL SITE PLAN FOR ADDITIONAL SITE ELECTRICAL INFORMATION.
  5. ALL CONNECTIONS TO CITY UTILITIES TO BE IN ACCORDANCE WITH CITY OF BLOOMINGTON STANDARDS.
  6. COORDINATE WITH MECHANICAL DRAWINGS FOR EXACT LOCATION OF SERVICE CONNECTIONS AND CONTINUATION OF SERVICES WITHIN BUILDING.
  7. ADJUST ALL STRUCTURES PUBLIC AND PRIVATE, TO PROPOSED GRADES AND ELEVATIONS. CORRECT WITH ALL REQUIREMENTS OF UTILITY OWNERS.
  8. VERIFY ALL CONNECTIONS TO EXISTING UTILITY SERVICES PRIOR TO CONSTRUCTION.
  9. COORDINATE WITH ALL INDIVIDUAL PRIVATE UTILITY OWNERS TO PROTECT EXISTING NATURAL GAS, TELEPHONE, AND CTV SERVICE TO PROPOSED BUILDING.
  10. COORDINATE WITH EROSION CONTROL CONTRACTOR TO PROVIDE LAWN SPRINKLER SLEEVES AS REQUIRED.
  11. CONTACT OWNER FOR EXISTING UTILITY LOCATIONS PRIOR TO CONSTRUCTION. ANY DISCREPANCIES BETWEEN LOCATED UTILITIES AND THE EXISTING CONDITION PLAN SHOULD BE NOTED AND FORWARDED TO THE ENGINEER.
  12. OBTAIN ALL NECESSARY PERMITS FOR CONSTRUCTION.

CIVIL SHEET INDEX

SHEET	TITLE
CD1	TITLE SHEET
CD2	EXISTING CONDITIONS PLAN
CD3	SITE PLAN
CD4	GRADING & EROSION CONTROL PLAN
CD5	UTILITY PLAN
CD6	ENLARGED PLAN
CD7	CONSTRUCTION DETAILS
CD8	CONSTRUCTION DETAILS
CD9	SITE ELECTRICAL PLAN
CD10	LANDSCAPE PLAN
CD11	LANDSCAPE SPECIFICATIONS
CD12	EROSION PLAN

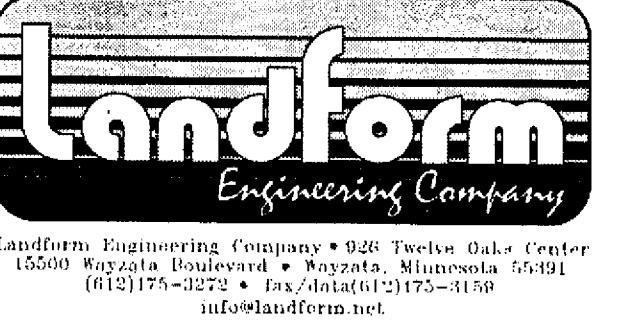
DATE REVISION REV.

5/01/97	CITY SUBMITTAL	
6/19/97	85% COMPLETE OWNER REVIEW	
6/29/97	BID ISSUE	

QUALITY MANAGEMENT REVIEW  
BY: SARA MORE DATE: 6/24/97

CERTIFICATION:  
I hereby certify that this plan was prepared by me, or under my direct supervision, and that I am a duly registered Professional Engineer under the laws of the state of Minnesota.  
*Stephen H. Johnson*  
Registration No. 0514 Date: 4/29/97

PROJECT :  
**APPLEBEE'S RESTAURANT**  
Bloomington, Minnesota



Landform Engineering Company • 926 Twelve Oaks Center  
15500 Wagonwheel Boulevard • Roseville, Minnesota 55121  
(612)751-4222 • Fax: (612)751-1108  
info@landform.net

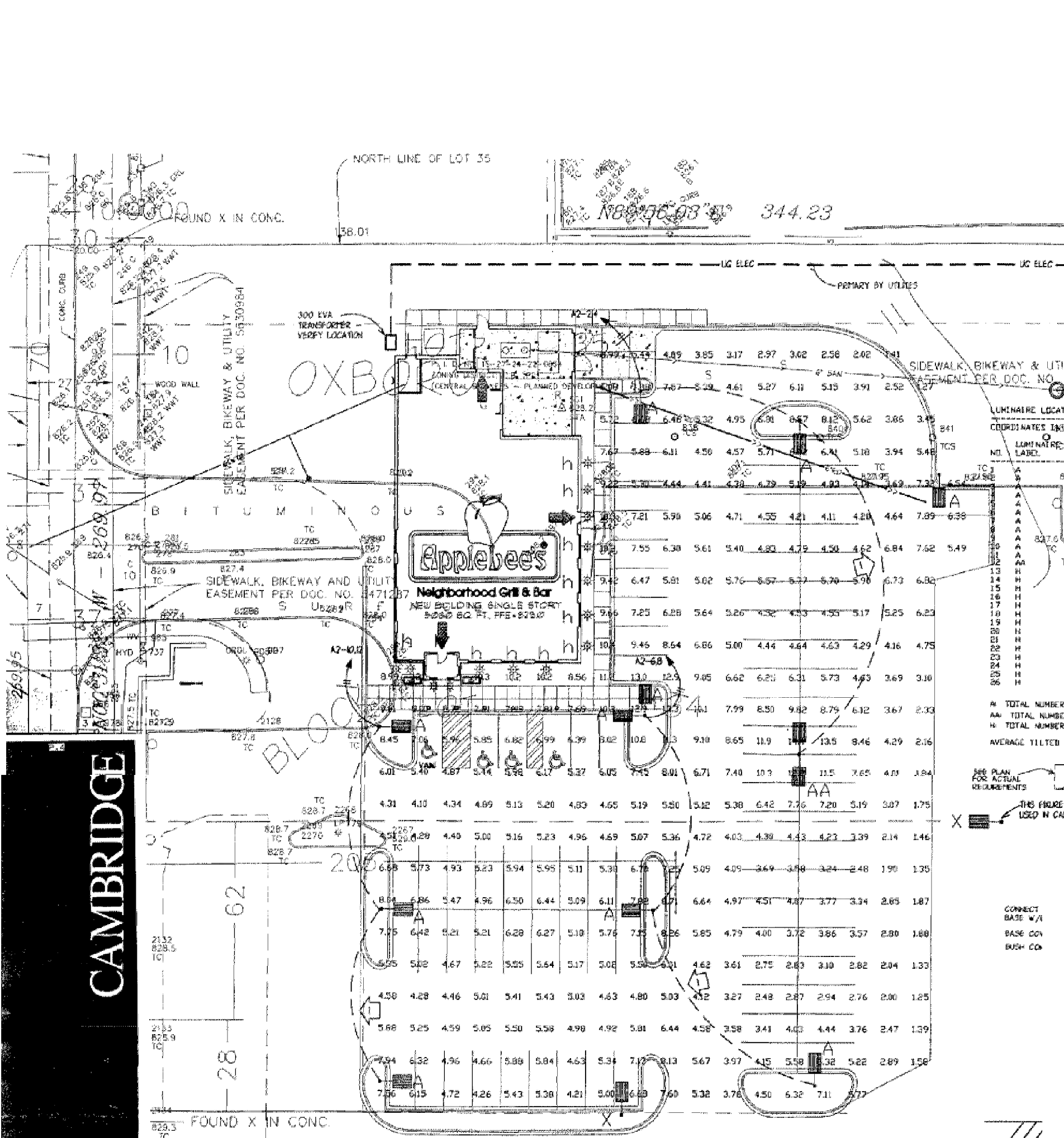
DATE: 3/9/97  
FILE NAME: C401BLDWG  
PROJECT NO. AP91003  
UTILITY PLAN  
**C4.1**

RUTH  
WALKE  
ADDITR

SOUTH AVENUE  
GARFIELD



Approved Plan  
SCALE IN FEET  
0 20 40



**CAMBRIDGE**  
**ULDLIGHTING, INC.**

VOLTAGE DROP ON ANY ONE CIRCUIT SHALL NOT EXCEED 3%

OBSTRUCTIVE SHAPE - BLDG.  
HEIGHT = 14  
TRANSMITTANCE = 0  
REFERENCE POINT:  
X = 18.25 Y = 135 Z = 0

PLANE - LOT ONLY  
POINT SPACING LEFT-TO-RIGHT = 10 ft  
POINT SPACING TOP-TO-BOTTOM = 10 ft  
LOWER LEFTHAND CORNER OF PLANE:  
X = 5 Y = 5 Z = 0  
UPPER RIGHTHAND CORNER OF PLANE:  
X = 189 Y = 255 Z = 0  
LIGHT METER IS NORMAL TO PLANE

AVERAGE Fc = 5.36  
MAXIMUM Fc = 14.4  
MINIMUM Fc = .73  
AVERAGE/MINIMUM = 7.34  
MAXIMUM/MINIMUM = 19.73  
TOTAL NUMBER OF POINTS = 361

Label	Quantity	lamp	Volts	Source	Mounting Ht.	Description/Label No.	Manufacturer
A	11	CL400		SPR. MHAL.	30'-0"	SPAUDLING CEI-STD-PH-M400-1V-MT-DRZ (SINGLE)	

3/4" PVC CON  
W/GROUND WIRE  
NO. 8 TV GREE  
GROUND WIRE  
GROUND ROD  
CLAMP BUSHING  
NO. 6-644C  
5/8" X 6" COPPER  
WELD GROUND  
ROD AT TYPE U  
ONLY

Approved Plan