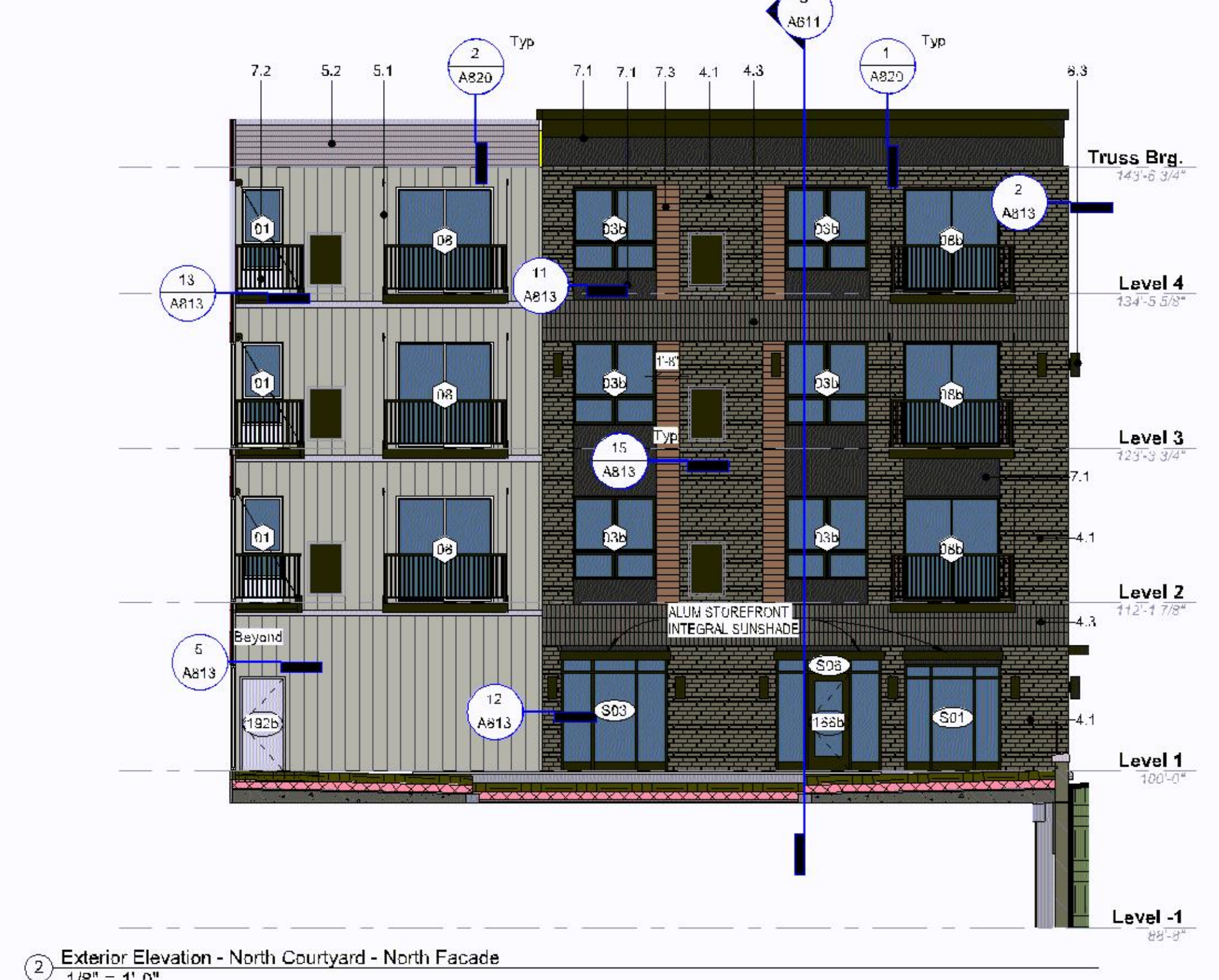
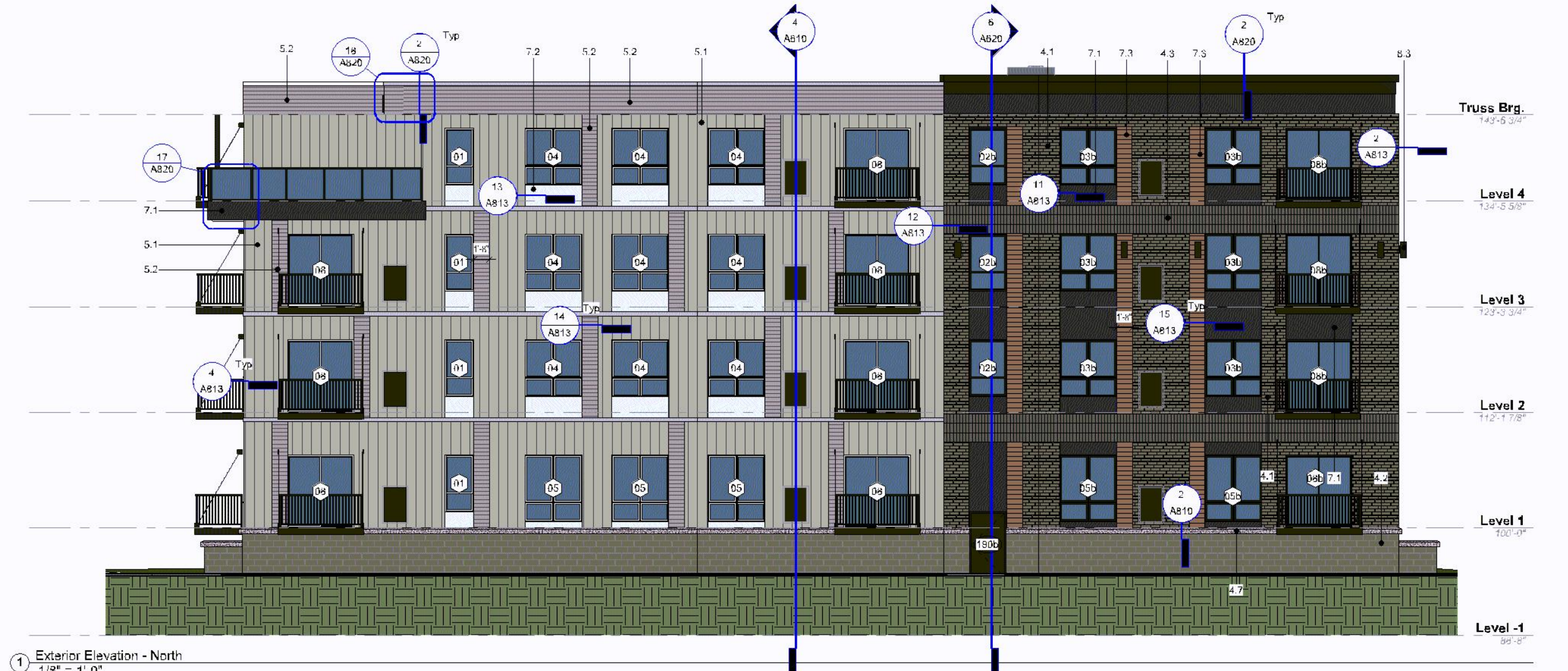
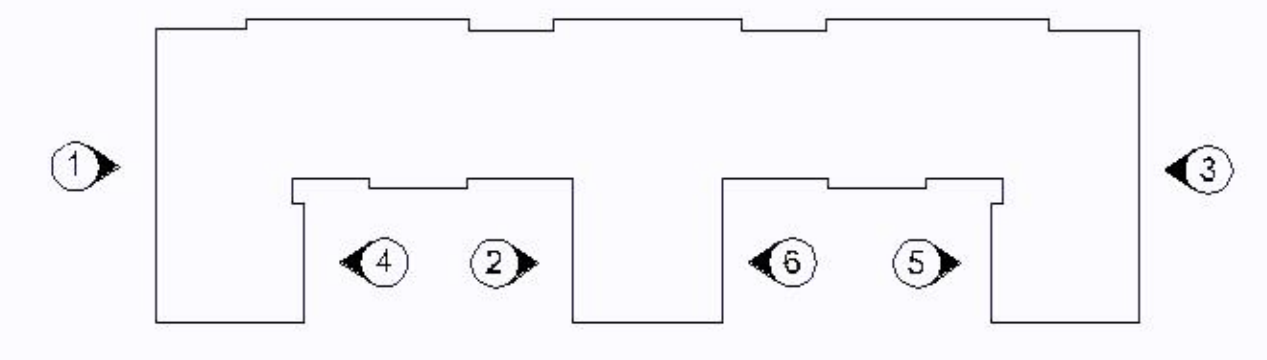


- EXTERIOR ELEVATION NOTES**
- SEE DRAWING SHEET A81 FOR WINDOW HEAD, JAMB AND SILL DETAILS.
  - SEE SHEETS A819-A841 FOR EXTERIOR WALL DETAILS.
  - ALL DIMENSIONS AT EXTERIOR WALLS ARE TAKEN TO EXTERIOR FACE OF MASONRY AT CMU WALLS OR CENTER OF STUD AT FRAMED WALLS UNLESS NOTED OTHERWISE.
  - SEE SHEETS A011 FOR INTERIOR AND EXTERIOR WALL TYPES.
  - PROVIDE CONTROL JOINTS IN CONCRETE MASONRY WALLS EVERY 30'-0" REGARDLESS IF SHOWN ON ELEVATION OR NOT SHOWN ON ELEVATION.
  - PROVIDE EXPANSION JOINTS IN BRICKWORK PER THE BRICK INDUSTRY ASSOCIATION TECH NOTES. THIS EXPANSION JOINTS IN CLAY BRICKWORK SHALL BE LOCATED 2'-0" FROM CENTER JAMB, LOCATED AT CORNERS, OFFSETS AND AT CHANGES IN SUPPORT MATERIAL, WALL HEIGHT OR CHANGE IN BACK-UP SYSTEM.
  - ALL WINDOWS IN BRICK TO HAVE PRECAST HEADS AND SILLS.
  - ALL WINDOWS IN CULTURED STONE TO HAVE CULTURED STONE HEADS AND SILLAS.
  - FOR VERTICAL JOINTS OF DIS-SIMILAR MATERIALS VERIFY WITH ARCHITECT.
  - COMPLY WITH FLASHING DETAILS ON SHEETS A820 FOR ROOF DETAILS.
  - ALL ACCENT BANDS THAT OCCUR ON THE FACE OF A BAY RETURN BACK TO THE MAIN BODY OF THE BUILDING U.N.G.
  - PROVIDE LIGHT OVER ALL PATIO DOORS.
  - ALL OUTSIDE CORNERS AT CFB SIDING SHALL RECEIVE EXTRUDED ALUMINUM MITERED VERTICAL REVEAL.
  - CAST STONE SILL TO OCCUR AT ALL CMUBRICK TO SIDING TRANSITIONS.
  - JOINTS OF ALL STONE SILLS SHALL BE RAKED AND FILLED W/ COLOR MATCHED SEALANT.
  - WHERE CMU FOUNDATION (OR VENEER) IS EXPOSED ABOVE GRADE, IT SHALL BE COLORED ARCHITECTURAL CMU COLOR TO BE SELECTED BY ARCHITECT.
  - VERIFY LOCATIONS OF LAMBS TONGUES WITH ARCHITECT.
  - ALL VERTICAL REVEALS SHALL BE EXTRUDED ALUMINUM.

- EXTERIOR MATERIALS TAG KEY**
- SIOUX CITY BRICK - UTILITY VINTAGE BLACK VELOUR RUNNING BOND
  - AMCON CMU - SPLIT FACE - COLOR: FUDGE
  - SIOUX CITY BRICK - UTILITY VINTAGE BLACK VELOUR SOLDIER COURSE
  - FIRESTONE 22 GA. METAL PANEL - UC501 (10'x8'), UC601 (2'x12') - COLOR: CITYSCAPE
  - FIRESTONE 22 GA. METAL SIDING - HORIZONTAL DELTA CONCEALED FASTENER PANEL-12" - COLOR: CITYSCAPE
  - FIRESTONE 22 GA. UC-500 METAL PANEL 12" - SMOOTH - COLOR: DARK BRONZE
  - FIBER CEMENT PANEL-STUCCO TEXTURE - COLOR: JAMES HARDIE IRON GRAY
  - FIBER CEMENT PANEL-STUCCO TEXTURE - COLOR: JAMES HARDIE ARCTIC WHITE
  - FIBER CEMENT LAP SIDING COLOR: WOODTONE RUSTIC SERIES MOUNTAIN CEDAR 7" EXPOSURE
  - GLAZING - COLOR: TBD
  - UPDOWN LIGHTING SCANCE



**APPROVED - ZONING REVIEW**  
**M. Centinario**  
**09/28/2022**



C:\revit local\21065-Enclave-Bloomington-22010 Humboldt v6\_griffin@kwa.com.rvt  
Copyright Kraus Wilson Architects 7/12/2022 11:25:10 AM

**EXTERIOR MATERIALS TAG KEY**

- 1 SIOUX CITY BRICK - UTILITY VINTAGE BLACK VELOUR RUNNING BOND
- 2 AMCON CMU - SPLUT FACE - COLOR: RIDGE
- 3 SIOUX CITY BRICK - UTILITY VINTAGE BLACK VELOUR ROLLER COURSE
- 4 FIRESTONE 22 GA. METAL PANEL - UC591 (1A) R. UC591 (4) 3 1/4" - COLOR: CITYSCAPE
- 5 FIRESTONE 22 GA. METAL SIDING - HORIZONTAL DELTA CONCEALED FASTENER PANEL - 12" - COLOR: CITYSCAPE
- 6 FIRESTONE 22 GA. UC-560 METAL PANEL 12" - 36" - COLOR: DARK BRONZE
- 7 FIBER CEMENT PANEL - STUCCO TEXTURE - COLOR: JAMES HARDIE IRON GRAY
- 8 FIBER CEMENT PANEL - STUCCO TEXTURE - COLOR: JAMES HARDIE ARCTIC WHITE
- 9 FIBER CEMENT LAP SIDING COLOR: WOODSTONE RUSTIC SERIES MOUNTAIN CEDAR 7 EXPOSURE
- 10 GLAZING - COLOR: TBD
- 11 UPDOWN LIGHTING SCENE

**EXTERIOR ELEVATION NOTES**

1. SEE DRAWING SHEET A831 FOR WINDOW HEAD, JAMB AND SILL DETAILS.
2. SEE SHEETS A810-A841 FOR EXTERIOR WALL DETAILS.
3. ALL DIMENSIONS AT EXTERIOR WALLS ARE TAKEN TO EXTERIOR FACE OF MASONRY AT CMU WALLS OR CENTER OF STUD AT FRAMED WALLS UNLESS NOTED OTHERWISE.
4. SEE SHEETS A011 FOR INTERIOR AND EXTERIOR WALL TYPES.
5. PROVIDE CONTROL JOINTS IN CONCRETE MASONRY WALLS EVERY 16'-0" REGARDLESS IF SHOWN ON ELEVATION OR NOT SHOWN ON ELEVATION.
6. PROVIDE EXPANSION JOINTS IN BRICKWORK PER THE BRICK INDUSTRY ASSOCIATION TECH NOTES. TYPICAL EXPANSION JOINTS IN CLAY BRICKWORK SHALL BE LOCATED 20 FEET ON CENTER MAX. LOCATED AT CORNERS, OFFSETS AND AT CHANGES IN SUPPORT, MATERIAL, WALL HEIGHT OR CHANGE IN BACK-UP SYSTEM.
7. ALL WINDOWS IN BRICK TO HAVE PRECAST HEADS AND SILLS.
8. ALL WINDOWS IN CULTURED STONE TO HAVE CULTURED STONE HEADS AND WASHERS.
9. FOR VERTICAL JOINTS OF DIS-SIMILAR MATERIALS VERIFY WITH ARCHITECT.
10. COMPLY WITH FLASHING DETAILS ON SHEETS A626 FOR ROOF DETAILS.
11. ALL ACCENT BANDS THAT OCCUR ON THE FACE OF A BAY RETURN BACK TO THE MAIN BODY OF THE BUILDING UNDO.
12. PROVIDE LIGHT OVER ALL PATIO DOORS.
13. ALL OUTSIDE CORNERS AT CFB SIDING SHALL RECEIVE EXTRUDED ALUMINUM MITERED VERTICAL REVEAL.
14. CAST STONE SILL TO OCCUR AT ALL CMU/BRICK TO SIDING TRANSITIONS.
15. JOINTS OF ALL STONE SILLS SHALL BE RAKED AND FILLED W/ COLOR MATCHED SEALANT.
16. WHERE CMU FOUNDATION (OR VENEER) IS EXPOSED ABOVE GRADE, IT SHALL BE COLORED ARCHITECTURAL CMU. COLOR TO BE SELECTED BY ARCHITECT.
17. VERIFY LOCATIONS OF LAMBS TONGUES WITH ARCHITECT.
18. ALL VERTICAL REVEALS SHALL BE EXTRUDED ALUMINUM.

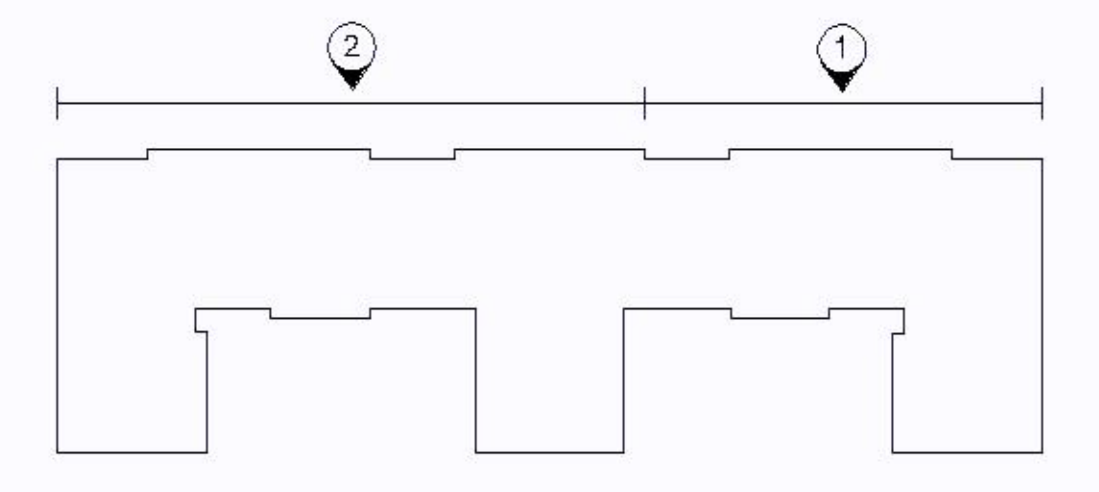


1 Elevation - East 2  
1/8" = 1'-0"

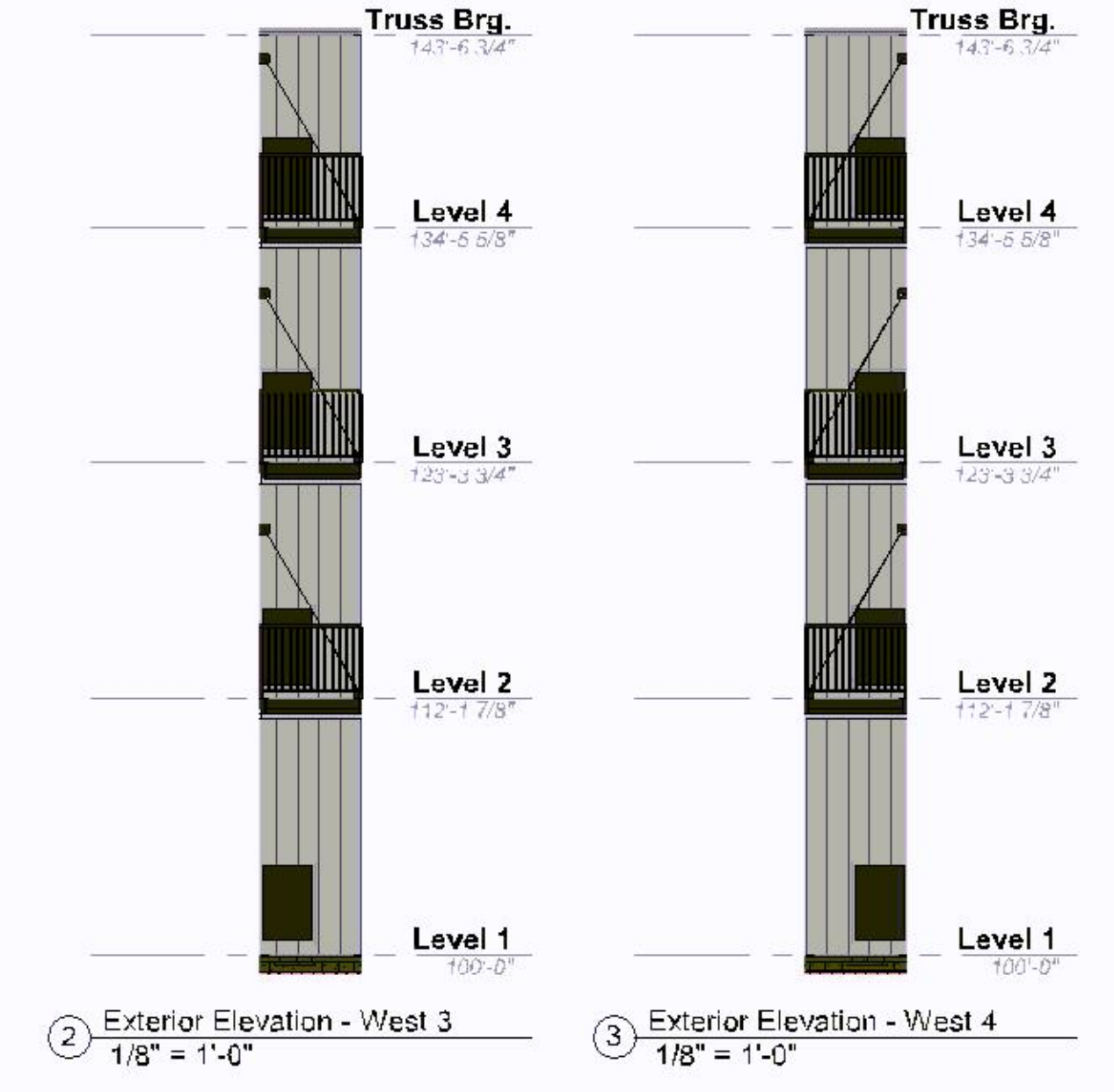
**APPROVED - ZONING REVIEW**  
**M. Centinario**  
**09/28/2022**



2 Elevation - East 1  
1/8" = 1'-0"



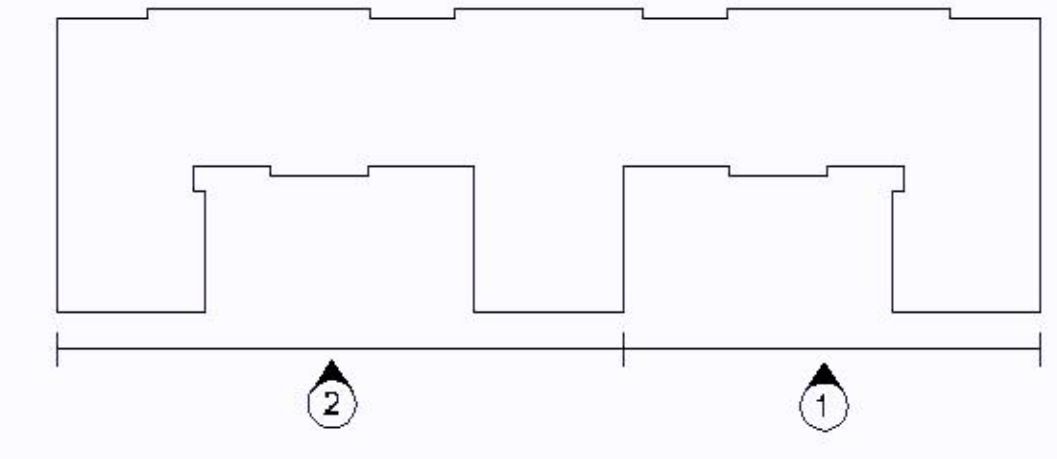
C:\Revit Local\21065-Enclave-Bloomington-22001\lumboldt\_vr\_griffin@kasswilson.com.rvt



- EXTERIOR ELEVATION NOTES**
- SEE DRAWING SHEET A501 FOR WINDOW HEAD, JAMB AND SILL DETAILS.
  - SEE SHEETS A510-A511 FOR EXTERIOR WALL DETAILS.
  - ALL DIMENSIONS ARE TAKEN TO EXTERIOR FACE OF MASONRY AT CMU WALLS OR CENTER OF STUD AT FRAMED WALLS UNLESS NOTED OTHERWISE.
  - SEE SHEETS A511 FOR INTERIOR AND EXTERIOR WALL TYPES.
  - PROVIDE CONTROL JOINTS IN CONCRETE MASONRY WALLS EVERY 30'-0" (REGARDLESS IF SHOWN ON ELEVATION OR NOT SHOWN ON ELEVATION).
  - PROVIDE EXPANSION JOINTS IN BRICKWORK PER THE BRICK INDUSTRY ASSOCIATION TECH NOTES. IN 1/4" EXPANSION JOINTS IN CLAY BRICKWORK SHALL BE LOCATED 20 FEET ON CENTER MAX. LOCATED AT CORNERS, OFFSETS AND AT CHANGES IN SUPPORT, MATERIAL, WALL HEIGHT OR CHANGE IN BACKLIP SYSTEM.
  - ALL WINDOWS IN BRICK TO HAVE PRECAST HEADS AND SILLS.
  - ALL WINDOWS IN CULTURED STONE TO HAVE CULTURED STONE HEADS AND WASHERS.
  - FOR VERTICAL JOINTS OF DIS-SIMILAR MATERIALS VERIFY WITH ARCHITECT.
  - COMPLY WITH FLASHING DETAILS ON SHEETS A490 FOR ROOF DETAILS.
  - ALL ACENT BANDS THAT OCCUR ON THE FACE OF A BALCONY RETURN BACK TO THE MAIN BODY OF THE BUILDING UNO.
  - PROVIDE LIGHT OVER ALL PATIO DOORS.
  - ALL OUTSIDE CORNERS AT GFR SIDING SHALL RECEIVE EXTRUDED ALUMINUM MITERED VERTICAL REVEAL.
  - CAST STONE SILL TO OCCUR AT ALL CMUBRICK TO SIDING TRANSITIONS.
  - JOINTS OF ALL STONE SILLS SHALL BE RAKED AND FILLED W/ COLOR MATCHED GROUT.
  - WHERE CMU FOUNDATION (OR VENEER) IS EXPOSED ABOVE GRADE, IT SHALL BE COLORED ARCHITECTURAL CMU. COLOR TO BE SELECTED BY ARCHITECT.
  - VERIFY LOCATIONS OF LAMBS TONGUES WITH ARCHITECT.
  - ALL VERTICAL REVEALS SHALL BE EXTRUDED ALUMINUM.

- EXTERIOR MATERIALS TAG KEY**
- 41 SILOUX CITY BRICK - UTILITY VINTAGE BLACK VELOUR RUNNING BOND
  - 42 AMCON CMU - SPLIT FACE - COLOR: FUDGE
  - 43 SILOUX CITY BRICK - UTILITY VINTAGE BLACK VELOUR COLOR: GRAY
  - 51 FIRESTONE 22 GA. METAL PANEL UC991 (1-3) 8' LUGS @ 12" - COLOR: CITYSCAPE
  - 52 FIRESTONE 22 GA. METAL SIDING - HORIZONTAL DELTA CONCEALED FASTENER PANEL - 12" - COLOR: CITYSCAPE
  - 53 FIRESTONE 22 GA. UC-226 METAL PANEL 12" - SMOOTH - COLOR: DARK BRONZE
  - 71 FIBER CEMENT PANEL - STUCCO TEXTURE - COLOR: JAMES HARDIE IRON GRAY
  - 72 FIBER CEMENT PANEL - STUCCO TEXTURE - COLOR: JAMES HARDIE ARCTIC WHITE
  - 73 FIBER CEMENT L-SP SIDING COLOR: WOODSTONE RUSTIC SERIES MOUNTAIN CEDAR 7' EXPOSURE
  - 81 GLAZING - COLOR: TBO
  - 83 UP-DOWN LIGHTING SCENCE

APPROVED - ZONING REVIEW  
M. Centinario  
09/28/2022



**KW** kass wilson architects  
1301 American Blvd E  
Suite 100  
Bloomington, MN 55425  
tel: (612) 879-6003  
fax: (612) 879-6666  
www.kasswilson.com

**CMU/LANDSCAPE:**  
Weswood  
12701 Whitewater Drive, Suite #300  
Minnetonka, MN 55343  
952.437.5150

**STRUCTURAL ENGINEERS:**  
Sandman Engineers  
1517 30th Avenue South  
Moonhead, MN 56563  
218.227.0022

**MEP:**  
Design-Build

**INTERIORS:**  
Kass Wilson Architects  
1301 American Blvd E  
Suite 100  
Bloomington, MN 55425

**Project:**  
Noble Apartments  
8200 Humboldt Ave S, Bloomington, MN 55431

**Owner:**  
ENCLAVE DEVELOPMENT  
2nd Street North, Suite 102, Fargo, ND 58102

**Project Number:** 21045  
**Date:** 05/23/22

IF ANY CERTIFYING ENGINEER, ARCHITECT, OR PROFESSIONAL ENGINEER HAS REVIEWED THIS DRAWING, THEIR REVIEW IS LIMITED TO THE TECHNICAL ASPECTS OF THE DRAWING AND DOES NOT CONSTITUTE A GUARANTEE OF THE ACCURACY OF THE INFORMATION PROVIDED.

GRIFFIN JAMESON & CO. INC. 5482

**Date:** 7/12/22

**Revision:** A5141

**Rev. No.:** 1

Exterior Elevations  
As indicated  
**A502**

C:\projects\Kass Wilson Architects\7/12/2022\11.25.43.dwg