

LumNo	Label	X	Y	Z	Orient
1	B	82410.5	110781.5	25	270
2	B	82426.5	110780.5	25	270
3	B	82483.5	110779.5	25	270
4	B	82414.5	110779	25	270
5	B	82402.5	110778.5	25	270
6	B	82408	110778.5	25	270
7	B	82439.5	110774	25	270
8	B	82421.5	110767	25	270
9	W	82477.5	110750.5	9	90
10	W	82458	110750	9	90
11	W	82470	110750.5	9	90
12	W	82410	110750.5	9	90
13	W	82432.5	110750.5	9	90
14	W	82423.5	110725.5	9	90
15	W	82417.5	110725	9	90
16	W	82413.5	110724.5	9	90
17	W	82423.5	110712	9	90
18	W	82424	110712	9	90
19	W	82428.5	110712	9	90
20	W	82431.5	110711.5	9	90
21	W	82435.5	110709.5	9	180
22	W	82449	110709	9	0
23	W	82469.5	110709	9	0
24	W	82468.5	110708.5	9	180
25	W	824125	110708.5	9	0
26	W	82402	110708	9	0
27	W	824109.5	110703.5	9	0
28	W	824363.5	110703.5	9	180
29	W	824402	110703.5	9	180
30	W	824191.5	110703	9	0
31	W	824222	110690	9	180
32	W	824245	110690	9	0
33	W	824275.5	110690	9	0
34	W	824307	110690	9	0
35	W	824337.5	110690	9	0
36	W	824061	110670.5	9	180
37	W	824199.5	110670	9	0
38	W	824500.5	110670	9	0
39	W	824362	110668	9	180
40	W	824393.5	110649.5	9	270
41	W	824105.5	110649	9	270
42	W	824172	110649	9	270
43	W	82421.5	110647.5	9	270
44	W	82421.5	110622.5	9	270
45	W	824111	110622	9	270
46	B	824123.5	110620.5	25	0
47	B2	824190	110627	25	0
48	B2	824331.5	110621.5	25	0
49	W	82441	110628.5	9	180
50	W	824591	110628.5	9	0
51	B	824378.5	110624	25	268.152
52	B	824283	110628.5	25	248.448
53	B	824338.5	110633.5	25	270
54	B	824130.5	110661	25	268.934
55	B	824013.5	110648.5	25	90
56	B	824175	110644.5	25	270
57	B	824055	110628.5	25	271.975
58	B	824243.5	110621.5	25	90
59	B	824312	110621	25	90
60	W	824271	110619	9	90
61	W	824201	110615.5	9	90
62	W	824357	110611	9	90
63	W	824253.5	110607	9	0
64	W	824189	110606.5	9	180
65	W	824274	110605	9	180
66	W	824316	110608.5	9	180
67	W	824350.5	110608	9	0
68	W	824401	110611.5	9	90
69	W	824372.5	110611	9	90
70	W	824439.5	110678.5	9	90
71	W	824472.5	110678.5	9	90
72	W	824188.5	110678	9	90
73	W	824171	110678	9	90
74	W	824071	110675.5	9	90
75	W	824103.5	110675.5	9	90
76	W	824371.5	110658.5	9	180
77	W	824404.5	110658.5	9	180
78	W	824438	110658.5	9	180
79	W	824471	110655	9	180
80	W	824491.5	110655	9	0
81	W	824089	110654.5	9	180
82	W	824092.5	110654.5	9	0
83	W	824159.5	110654.5	9	0
84	W	824128.5	110654	9	0
85	W	824129	110654	9	0
86	W	824246	110626	9	270
87	W	824310.5	110626	9	270
88	W	824362	110621.5	9	180
89	W	824601	110621.5	9	0
90	W	824230	110621	9	0
91	W	824091.5	110620	9	180
92	W	824163.5	110620	9	270
93	W	824482.5	110398.5	9	270
94	W	824081	110398	9	270
95	W	824376	110396	9	270

Approved
7-25-07
[Signature]

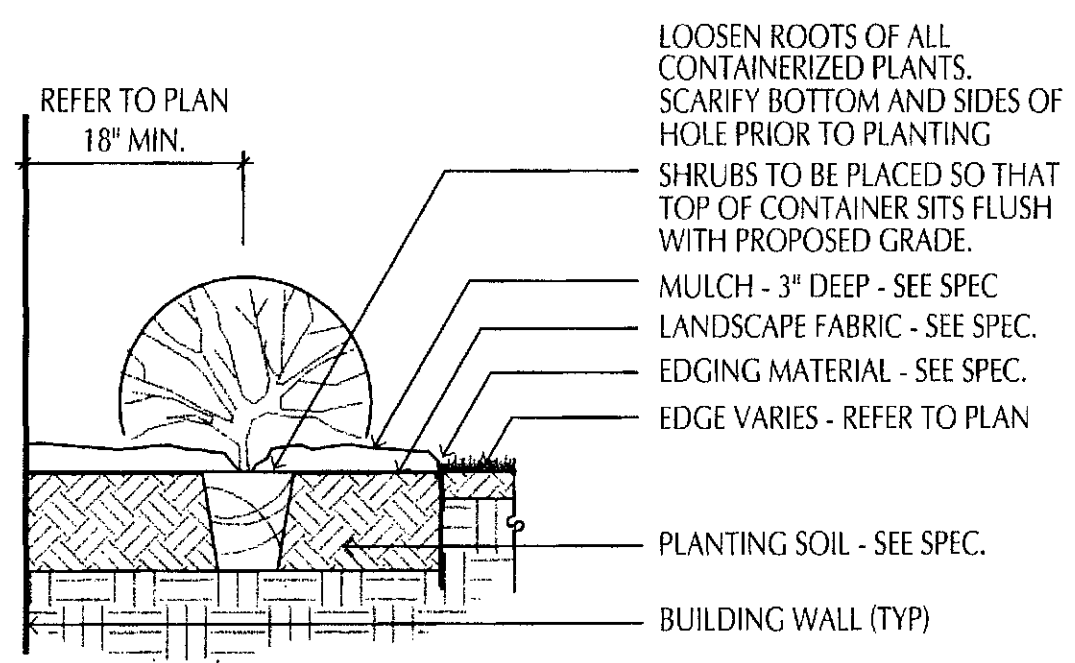
Blooming Glen
Concourse III fixtures at 25 ft
Lumark Trapezoids at 9 ft
Lighting for playground areas added



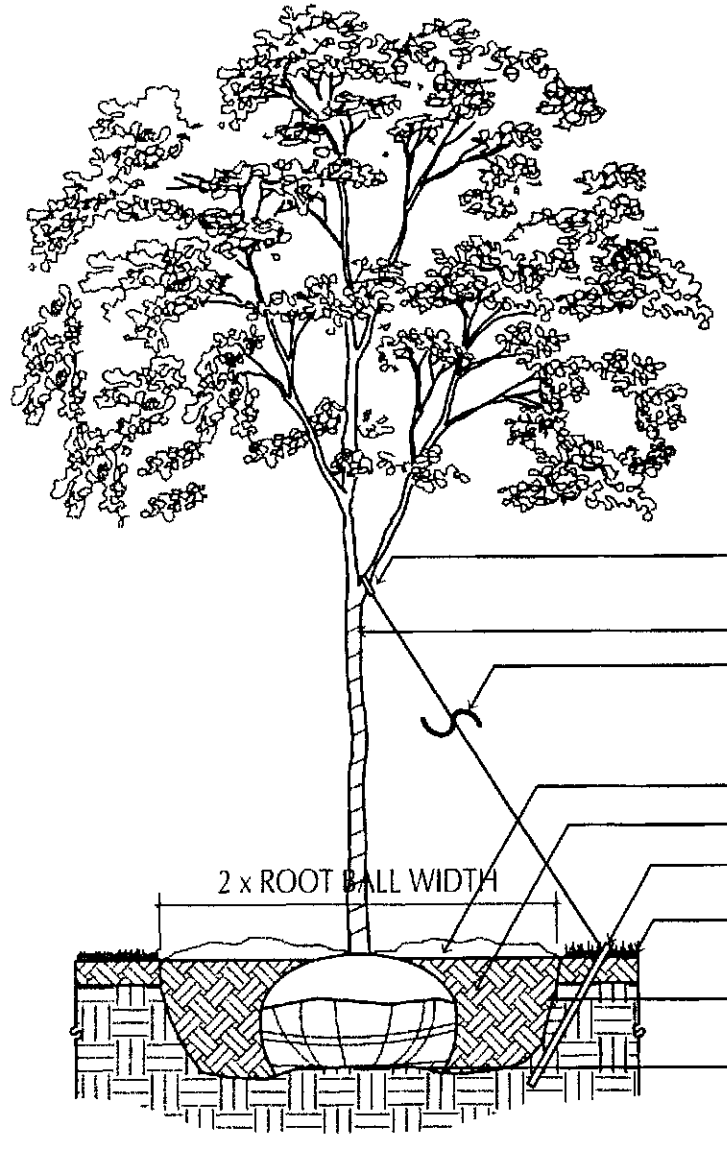
Label	Avg	Max	Min	Avg/Min	Max/Min	Description
A1 Garage Pkg	3.23	12.7	1.3	2.48	9.77	Notes: FC at grade in front of Bldg A1 garages
B1 Garage Pkg	3.74	11.5	0.9	4.16	12.78	Notes: FC at grade in front of Bldg B1 garages
A2 Garage Pkg	3.07	11.7	1.3	2.36	9.00	Notes: FC at grade in front of Bldg A2 garages
North Pkg	2.49	5.1	2.2	1.13	1.41	Notes: FC at grade in north parking area
A3 Garage Pkg	2.58	7.4	0.7	3.88	10.57	Notes: FC at grade in front of Bldg A3 garages
A4 Garage Pkg	2.87	6.9	0.8	3.68	12.38	Notes: FC at grade in front of Bldg A4 garages
Handicap Pkg	2.79	4.3	1.9	1.47	2.37	Notes: FC at grade in handicap parking
Community Pkg	2.42	3.7	1.4	1.73	2.64	Notes: FC at grade in community Bldg parking
Proposed parking	3.08	3.9	2.3	1.34	1.70	Notes: FC at grade in proposed parking area

Symbol	Qty	Label	Arrangement	Lumens	L/F	Description
+	18	B	GRID-LE	21000	0.700	McChow Edison Concourse III CAL-250-MH-4S 250W MH Type IV segmented single 25ft pole (IESCAL-400-MH-XX-4S adjusted)
+	2	B2	BACK-BACK	21000	0.700	McChow Edison Concourse III CAL-250-MH-4S 250W MH Type IV segmented 2ft (180) 25ft pole (IESCAL-400-MH-XX-4S adjusted)
+	75	W	SINGLE	5000	0.750	Lumark Trapezoid MHP-T-70 70W MH wall mount at 9 ft (IESMHP-T-175 adjusted)

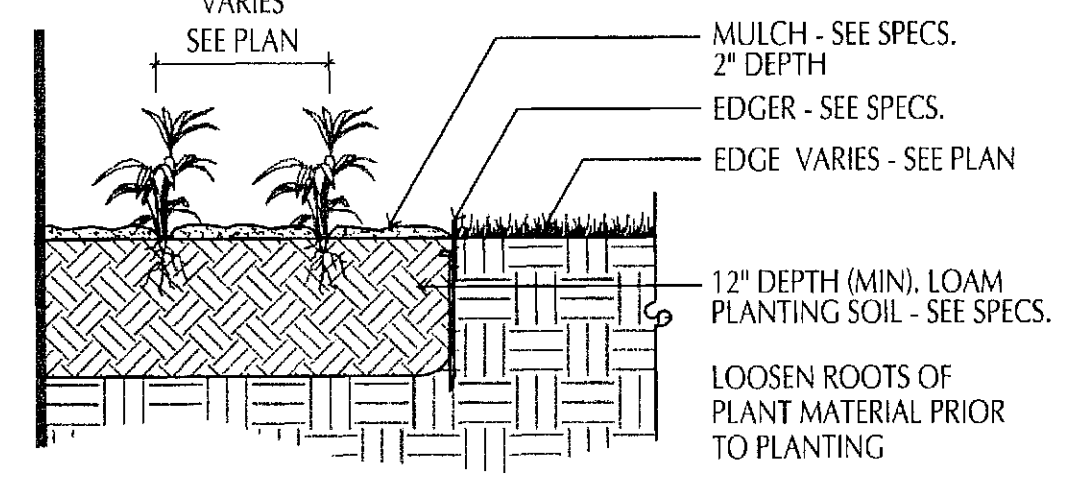
RECEIVED
JUL 24 2007
City of Bloomington
Inspection Division



1 SHRUB PLANTING DETAIL
SCALE: 3/4" = 1'-0"



2 DECIDUOUS TREE PLANTING DETAIL
SCALE: 1/2" = 1'-0"



3 PERENNIAL PLANTING
SCALE: 3/4" = 1'-0"

REQUIREMENTS:

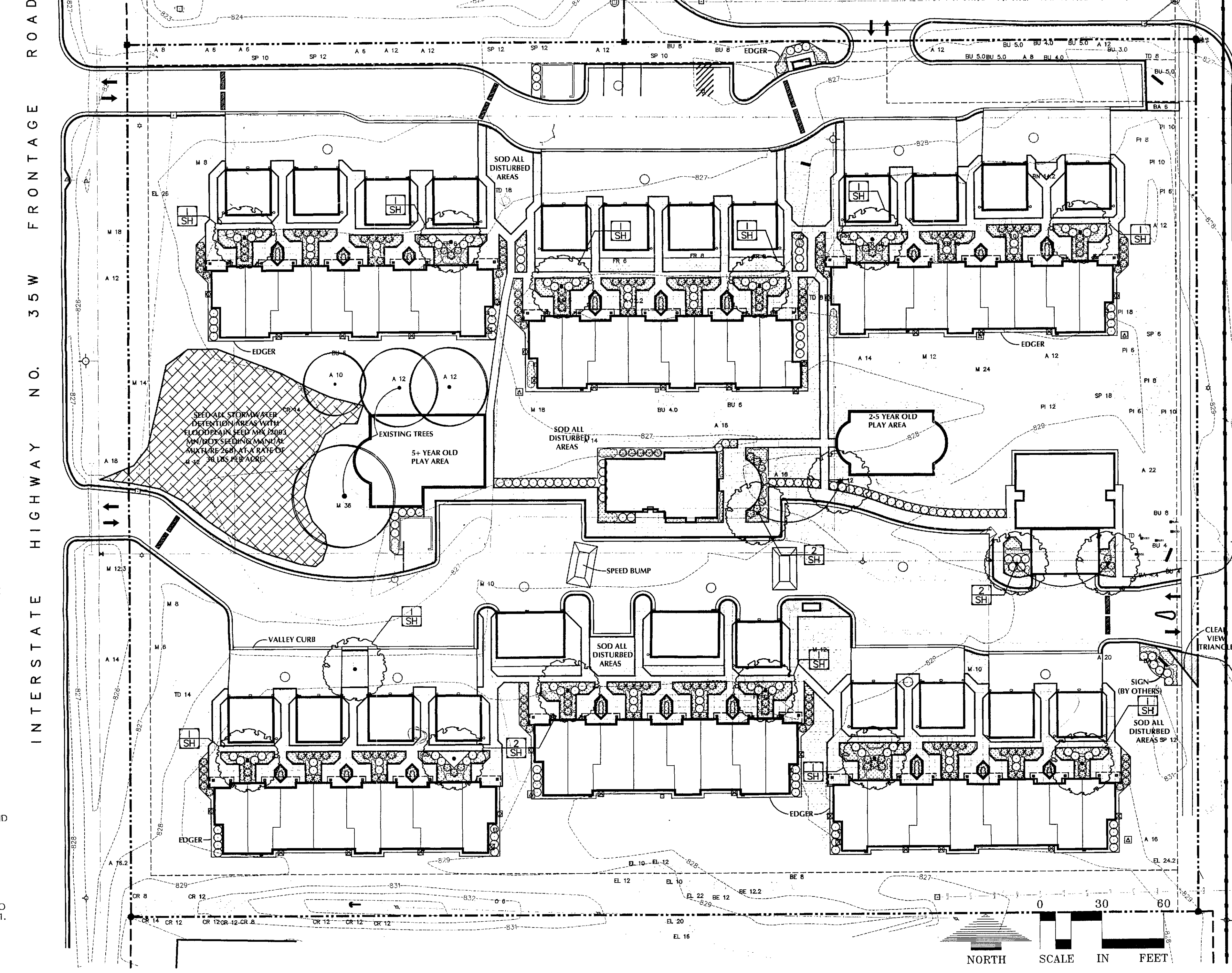
- 1 TREE PER 2,500 SQ. FT.
- 1 SHRUB PER 1,000 SQ. FT.
- TOTAL SITE AREA IS 217,000 SQ. FT.
- TREES REQUIRED: 87
- TREES EXISTING: 92
- TREES REMOVED: 13
- TREES PROPOSED: 17
- TOTAL TREES ON SITE: 96
- SHRUBS REQUIRED: 217
- SHRUBS PROPOSED: 366

NOTE:
SOD ALL DISTURBED AREAS AND ANY AREAS THAT ARE EXTENSIVELY WORN OR DAMAGED.

LANDSCAPE SCHEDULE:

SYM	QTY	COMMON NAME	SCIENTIFIC NAME	SIZE	CONT	COMMENTS
DECIDUOUS TREES						
SH	17	SKYLINE HONEYLOCUST	Gleditsia triacanthos var. inermis 'Skyline'	2.5" CAL	B&B	SINGLE STEM

LANDSCAPE PLAN:



GENERAL NOTES:

CONTRACTOR SHALL VISIT SITE PRIOR TO SUBMITTING BID. HE SHALL INSPECT SITE AND BECOME FAMILIAR WITH EXISTING CONDITIONS RELATING TO THE NATURE AND SCOPE OF WORK.

VERIFY LAYOUT AND ANY DIMENSIONS SHOWN AND BRING TO THE ATTENTION OF THE LANDSCAPE ARCHITECT ANY DISCREPANCIES WHICH MAY COMPROMISE THE DESIGN AND/OR INTENT OF THE PROJECT'S LAYOUT.

ASSURE COMPLIANCE WITH ALL APPLICABLE CODES AND REGULATIONS GOVERNING THE WORK OR MATERIALS SUPPLIED.

CONTRACTOR SHALL PROTECT ALL EXISTING ROADS, CURBS/CUTTERS, TRAILS, TREES, LAWNS AND SITE ELEMENTS DURING PLANTING OPERATIONS. ANY DAMAGE TO SAME SHALL BE REPAIRED AT NO COST TO THE OWNER.

CONTRACTOR SHALL VERIFY ALIGNMENT AND LOCATION OF ALL UNDERGROUND AND ABOVE GRADE UTILITIES AND PROVIDE THE NECESSARY PROTECTION FOR SAME BEFORE CONSTRUCTION / MATERIAL INSTALLATION BEGINS (MINIMUM 10' - 0" CLEARANCE).

ALL UNDERGROUND UTILITIES SHALL BE LAID SO THAT TRENCHES DO NOT CUT THROUGH ROOT SYSTEMS OF ANY EXISTING TREES TO REMAIN.

EXISTING CONTOURS, TRAILS, VEGETATION, CURB/CUTTER AND OTHER EXISTING ELEMENTS BASED UPON INFORMATION SUPPLIED TO LANDSCAPE ARCHITECT BY OTHERS. CONTRACTOR SHALL VERIFY ANY AND ALL DISCREPANCIES PRIOR TO CONSTRUCTION AND NOTIFY LANDSCAPE ARCHITECT OF SAME.

THE ALIGNMENT AND GRADES OF THE PROPOSED WALKS, TRAILS AND/OR ROADWAYS ARE SUBJECT TO FIELD ADJUSTMENT REQUIRED TO CONFORM TO LOCALIZED TOPOGRAPHIC CONDITIONS AND TO MINIMIZE TREE REMOVAL AND GRADING. ANY CHANGE IN ALIGNMENT MUST BE APPROVED BY LANDSCAPE ARCHITECT.

LANDSCAPE INSTALLATION:

COORDINATE THE PHASES OF CONSTRUCTION AND PLANTING INSTALLATION WITH OTHER CONTRACTORS WORKING ON SITE.

NO PLANTING WILL BE INSTALLED UNTIL COMPLETE GRADING AND CONSTRUCTION HAS BEEN COMPLETED IN THE IMMEDIATE AREA.

WHERE SOD/SEED ABUTS PAVED SURFACES, FINISHED GRADE OF SOD/SEED SHALL BE HELD 1" BELOW SURFACE ELEVATION OF TRAIL, SLAB, CURB, ETC.

SEED ALL AREAS DISTURBED DUE TO GRADING OTHER THAN THOSE AREAS NOTED TO RECEIVE SOD. SEED SHALL BE INSTALLED AND MULCHED AS PER MINDOT SPECS.

SOD ALL DESIGNATED AREAS DISTURBED DUE TO GRADING. SOD SHALL BE LAID PARALLEL TO THE CONTOURS AND SHALL HAVE STAGGERED JOINTS. ON SLOPES STEEPER THAN 3:1 OR IN DRAINAGE SWALES, THE SOD SHALL BE STAKED TO THE GROUND.

ALL PLANT MATERIAL SHALL COMPLY WITH THE LATEST EDITION OF THE AMERICAN STANDARD FOR NURSERY STOCK, AMERICAN ASSOCIATION OF NURSERYMEN. UNLESS NOTED OTHERWISE, DECIDUOUS SHRUBS SHALL HAVE AT LEAST 5 CANES AT THE SPECIFIED SHRUB HEIGHT. ORNAMENTAL TREES SHALL HAVE NO V CROTCHES AND SHALL BEGIN BRANCHING NO LOWER THAN 3' ABOVE ROOT BALL. STREET AND BOULEVARD TREES SHALL BEGIN BRANCHING NO LOWER THAN 6' ABOVE FINISHED GRADE.

ANY CONIFEROUS TREE PREVIOUSLY PRUNED FOR CHRISTMAS TREE SALES SHALL NOT BE USED. ALL CONIFEROUS TREES SHALL BE FULL FORM, NATURAL TO THE SPECIES, WITHOUT PRUNING.

PLAN TAKES PRECEDENCE OVER PLANT SCHEDULE IF DISCREPANCIES IN QUANTITIES EXIST. SPECIFICATIONS TAKE PRECEDENCE OVER NOTES.

ALL PROPOSED PLANTS SHALL BE LOCATED AND STAKED AS SHOWN ON PLAN. LANDSCAPE ARCHITECT MUST APPROVE ALL STAKING OF PLANT MATERIAL PRIOR TO ANY AND ALL DIGGING.

NO PLANT MATERIAL SUBSTITUTIONS WILL BE ACCEPTED UNLESS APPROVAL IS REQUESTED OF THE LANDSCAPE ARCHITECT BY THE LANDSCAPE CONTRACTOR PRIOR TO THE SUBMISSION OF A BID AND/OR QUOTATION.

ADJUSTMENTS IN LOCATION OF PROPOSED PLANT MATERIALS MAY BE MADE IN FIELD. SHOULD AN ADJUSTMENT BE ADVISED, THE LANDSCAPE ARCHITECT MUST BE NOTIFIED.

ALL PLANT MATERIALS SHALL BE FERTILIZED UPON INSTALLATION WITH DRIED BONE MEAL, OTHER APPROVED FERTILIZER MIXED IN WITH THE PLANTING SOIL PER THE MANUFACTURER'S INSTRUCTIONS OR MAY BE TREATED FOR SUMMER AND FALL INSTALLATION WITH AN APPLICATION OF GRANULAR 0-20-20 OF 12 OZ PER 2.5" CALIPER PER TREE AND 6 OZ PER SHRUB WITH AN ADDITIONAL APPLICATION OF 10-10-10 THE FOLLOWING SPRING IN THE TREE SAUCER.

ALL PLANTING AREAS RECEIVING GROUND COVER, PERENNIALS, ANNUALS, AND/OR VINES SHALL RECEIVE A MINIMUM OF 8" DEPTH OF PLANTING SOIL CONSISTING OF AT LEAST 45 PARTS TOPSOIL, 45 PARTS PEAT OR MANURE AND 10 PARTS SAND.

ALL PLANTS TO BE INSTALLED AS PER PLANTING DETAILS.

BLACK POLY EDGER TO BE USED TO CONTAIN SHRUBS, PERENNIALS, AND ANNUALS WHERE BED MEETS SOD/SEED UNLESS NOTED OTHERWISE.

ALL SHRUB BED MASSINGS TO RECEIVE 3" DEEP SHREDDED HARDWOOD MULCH AND FIBER MAT WEED BARRIER.

ALL TREES TO RECEIVE 4" DEEP SHREDDED HARDWOOD MULCH WITH NO MULCH IN DIRECT CONTACT WITH TREE TRUNK.

ALL ANNUAL AND PERENNIAL PLANTING BEDS TO RECEIVE 2" DEEP SHREDDED HARDWOOD MULCH WITH NO WEED BARRIER.

SPREAD GRANULAR PRE EMERGENT HERBICIDE (PREEN OR EQUAL) PER MANUFACTURER'S RECOMMENDATIONS UNDER ALL MULCHED AREAS.

MAINTENANCE STRIPS TO HAVE EDGER AND MULCH AS SPECIFIED/INDICATED ON DRAWING OR IN SPECIFICATION.

VERIFY EXISTING/PROPOSED IRRIGATION SYSTEM LAYOUT AND CONFIRM COMPLETE LIMITS OF IRRIGATION PRIOR TO SUPPLYING SHOP DRAWINGS.

LANDSCAPE CONTRACTOR SHALL BE RESPONSIBLE FOR PROVIDING AN IRRIGATION LAYOUT PLAN AND SPECIFICATION AS A PART OF THE SCOPE OF WORK WHEN BIDDING. THESE SHALL BE APPROVED BY THE LANDSCAPE ARCHITECT PRIOR TO ORDER AND/OR INSTALLATION. IT SHALL BE THE LANDSCAPE CONTRACTOR'S RESPONSIBILITY TO INSURE THAT ALL SODDED/SEEDED AND PLANTED AREAS ARE IRRIGATED PROPERLY, INCLUDING THOSE AREAS DIRECTLY AROUND AND ADJUTING BUILDING FOUNDATION.

THE LANDSCAPE CONTRACTOR SHALL PROVIDE THE OWNER WITH A WATERING/LAWN IRRIGATION SCHEDULE APPROPRIATE TO THE PROJECT SITE CONDITIONS AND TO PLANT MATERIAL GROWTH REQUIREMENTS.

IF THE LANDSCAPE CONTRACTOR IS CONCERNED OR PERCEIVES ANY DEFICIENCIES IN THE PLANT SELECTIONS, SOIL CONDITIONS OR ANY OTHER SITE CONDITION WHICH MIGHT NEGATIVELY AFFECT PLANT ESTABLISHMENT, SURVIVAL OR GUARANTEE, HE MUST BRING THESE DEFICIENCIES TO THE ATTENTION OF THE LANDSCAPE ARCHITECT PRIOR TO PROCUREMENT AND/OR INSTALLATION.

CONTRACTOR SHALL SUBMIT A WRITTEN REQUEST FOR THE OWNER ACCEPTANCE INSPECTION OF ALL LANDSCAPE AND SITE IMPROVEMENTS.

CONTRACTOR IS RESPONSIBLE FOR ON-GOING MAINTENANCE OF ALL NEWLY INSTALLED MATERIALS UNTIL TIME OF OWNER ACCEPTANCE. ANY ACTS OF VANDALISM OR DAMAGE WHICH MAY OCCUR PRIOR TO OWNER ACCEPTANCE SHALL BE THE RESPONSIBILITY OF THE CONTRACTOR. CONTRACTOR SHALL PROVIDE THE OWNER WITH A MAINTENANCE PROGRAM INCLUDING, BUT NOT NECESSARILY LIMITED TO, PRUNING, FERTILIZATION AND DISEASE/PEST CONTROL.

CONTRACTOR SHALL GUARANTEE NEW PLANT MATERIAL THROUGH ONE CALENDAR YEAR FROM THE DATE OF OWNER ACCEPTANCE.

WARRANTY (ONE FULL GROWING SEASON) FOR LANDSCAPE MATERIALS SHALL BEGIN ON THE DATE OF ACCEPTANCE BY THE LANDSCAPE ARCHITECT AFTER THE COMPLETION OF PLANTING OF ALL LANDSCAPE MATERIALS. NO PARTIAL ACCEPTANCE WILL BE CONSIDERED.

REPRODUCIBLE AS-BUILT DRAWINGS (S) OF ALL LANDSCAPE INSTALLATION AND SITE IMPROVEMENTS UPON COMPLETION OF CONSTRUCTION INSTALLATION AND PRIOR TO PROJECT ACCEPTANCE.

UNLESS NOTED OTHERWISE THE APPROPRIATE DATES FOR SPRING PLANT MATERIAL INSTALLATION AND SEED/SOD PLACEMENT IS FROM THE TIME GROUND HAS THAWED TO JUNE 15.

FALL SODDING IS GENERALLY ACCEPTABLE FROM AUGUST 15 - NOVEMBER 1. FALL SEEDING FROM AUGUST 15 - SEPTEMBER 15; DORMANT SEEDING IN THE FALL SHALL NOT OCCUR PRIOR TO NOVEMBER 1. PLANTING OUTSIDE THESE DATES IS NOT RECOMMENDED. ANY ADJUSTMENT MUST BE APPROVED IN WRITING BY THE LANDSCAPE ARCHITECT.

CONIFEROUS PLANTING MAY OCCUR FROM AUGUST 15 - OCTOBER 1 AND FALL DECIDUOUS PLANTING FROM THE FIRST FROST UNTIL NOVEMBER 15. PLANTING OUTSIDE THESE DATES IS NOT RECOMMENDED. ANY ADJUSTMENT MUST BE APPROVED IN WRITING BY THE LANDSCAPE ARCHITECT.

PROTECT ALL EXISTING OAKS ON SITE SCHEDULED TO REMAIN. IF EXISTING OAKS ARE DAMAGED IN ANY MANNER, ABOVE OR BELOW GROUND IN THE ROOT SYSTEM, AN ASPHALTIC TREE PRUNING PAINT SHOULD BE APPLIED IMMEDIATELY AFTER WOUNDING. OAKS ARE NOT TO BE PRUNED, REMOVED OR TRANSPANTED BETWEEN APRIL 15 AND JULY 1. NOTIFY LANDSCAPE ARCHITECT IF THESE DATES ARE UNAVOIDABLE.

LANDSCAPE CONTRACTOR SHALL ESTABLISH TO HIS SATISFACTION THAT SOIL AND COMPACTION CONDITIONS ARE ADEQUATE TO ALLOW FOR PROPER DRAINAGE AT AND AROUND THE BUILDING SITE.

Project Name:

BLOOMING GLEN

Bloomington, Minnesota

Owner/Developer Name:

DOMINIUM MANAGEMENT SERVICES, INC.

2355 POLARIS LANE N. PLYMOUTH, MN 55447

Professional Services:

LOUCKS ASSOCIATES

Planning • Civil Engineering • Land Surveying
Landscape Architecture • Environmental

7200 Hemlock Lane - Suite 300
Minneapolis, Minnesota 55369
Telephone: (763) 242-5505
Fax: (763) 242-5822
www.LoucksAssociates.com

© 2004

CADD Qualification:

CADD files prepared by the Consultant for this project are the intellectual property of the Consultant and shall not be used, copied, reproduced, or otherwise disseminated without the written approval of the Consultant. The Consultant shall not be held responsible for any errors or omissions in the CADD files, or for any damage to the project or for any delay in the project caused by the Consultant's approval of the CADD files. The Consultant shall not be held responsible for any errors or omissions in the CADD files, or for any damage to the project or for any delay in the project caused by the Consultant's approval of the CADD files.

06129

Submital:

3-7-07	Planning Commission
3-30-07	Pricing Set
6-01-07	Construction Documents
7-31-07	Revised Per City Comments

CITY OF BLOOMINGTON, MN LANDSCAPE PLAN APPROVED

By: *[Signature]*
Director of Planning

I hereby certify that this plan, specification or report was prepared by me or under my direct supervision and that I am a duly Licensed Landscape Architect under the laws of the State of Minnesota.

26017
License No. 7-19-07
Date

Quality Control:

Project Team: PAK Drawn By: TIF
Checked By: PAK Review Date: 7-19-07

Sheet Index:

- C1-1 Existing Conditions Plan
- C1-2 Demolition Plan
- C2-1 Site Plan
- C2-2 Typical Patio Plan
- C3-1 Grading Plan
- C3-2 Storm Water Pollution Prevention Plan
- C4-1 Utility Plan
- C5-1 Project Details
- L1-1 Landscape Plan
- L1-2 Landscape Plant Callouts

Sheet Title:

LANDSCAPE RECEIVED
AUG 01 2007

Project No.: 06129
Division: 06-129

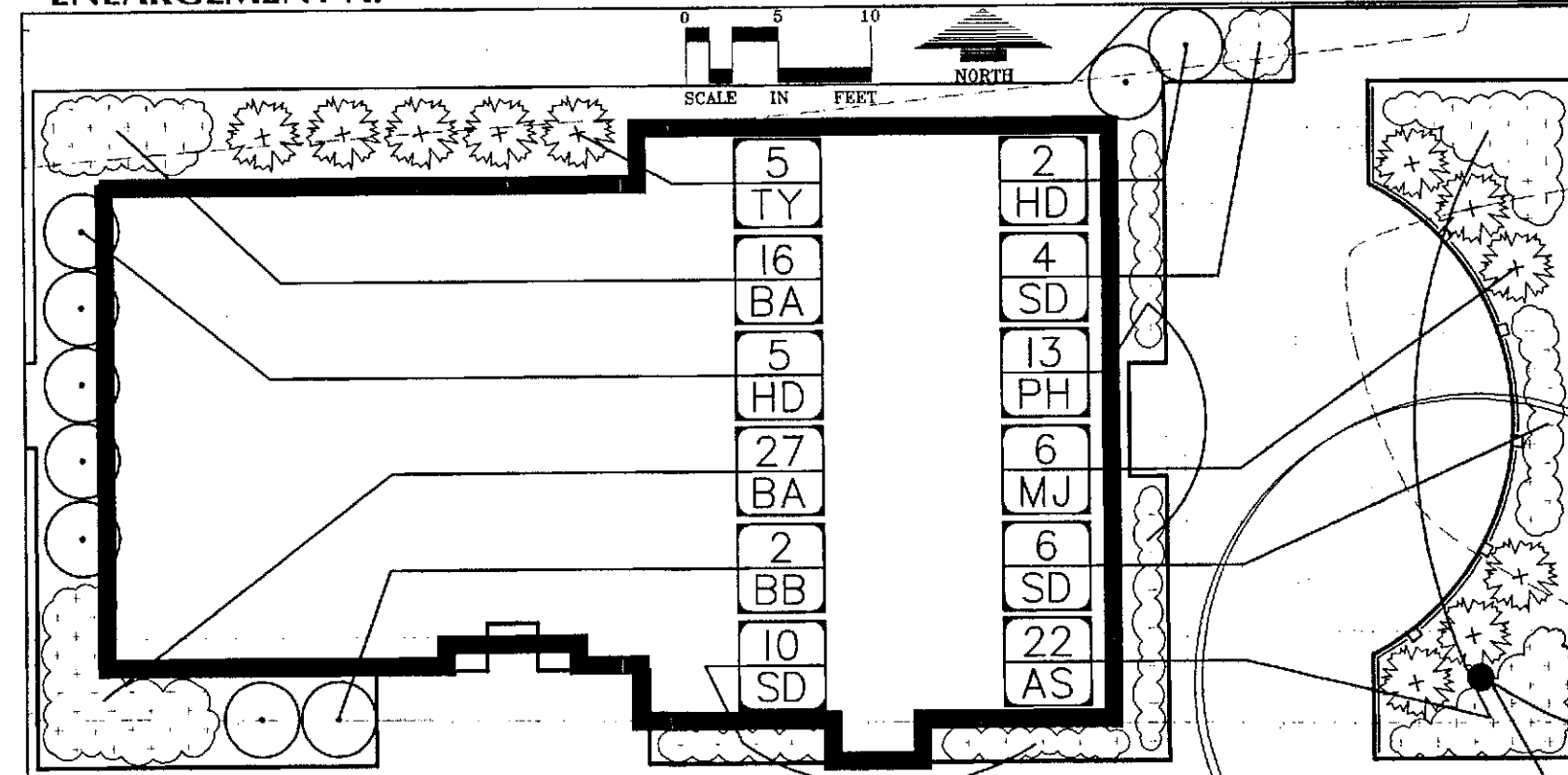
Sheet No.:

L1-1

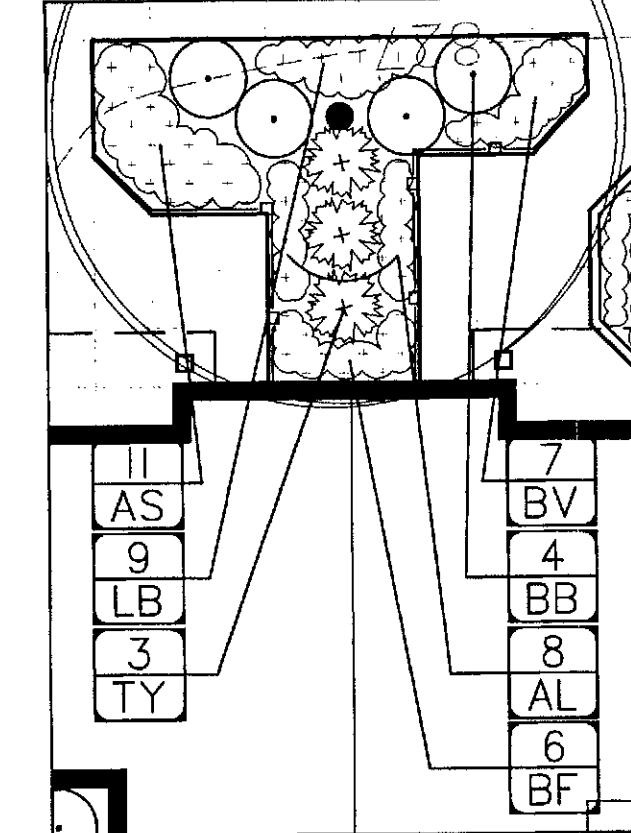
PLANT SCHEDULE:

SYM	QTY	COMMON NAME	SCIENTIFIC NAME	SIZE	CONT	COMMENTS
DECIDUOUS SHRUBS						
AC	56	AUTUMN MAGIC CHOKEBERRY	<i>Aronia melanocarpa</i> 'Magic Carpet'	24" HGT	POT	PLANT 4' O.C.
BB	57	BUTTERFLYBUSH	<i>Diervilla sessilifolia</i> 'Butterfly'	24" HGT	POT	PLANT 4' O.C.
GB	48	GREEN MOUNTAIN BOXWOOD	<i>Buxus</i> x 'Green Mountain'	24" HGT	POT	PLANT 4' O.C.
HD	41	HURON DOGWOOD	<i>Cornus racemosa</i> 'Hurzan'	24" HGT	POT	PLANT 4' O.C.
RA	39	ALPINE CURRANT	<i>Ribes alpinum</i>	24" HGT	POT	PLANT 4' O.C.
CONIFEROUS SHRUBS						
MJ	58	MINT JULEP JUNIPER	<i>Juniperus chinensis</i> 'Mint Julep'	18" SPRD	POT	PLANT 4' O.C.
TY	67	TAUNTON YEW	<i>Taxus x media</i> 'Taunton'	18" SPRD	POT	PLANT 4' O.C.
PERENNIALS						
AH	35	AUREOMARGINATA HOSTA	<i>Hosta montana</i> 'Aureomarginata'	1 GAL	POT	PLANT 3' O.C.
AL	224	ANNE GREENAWAY LAMIMUM	<i>Lamium maculatum</i> 'Anne Greenaway'	3" PLUG	TRAY	PLANT 2' O.C.
AS	257	AUTUMN FIRE SEDUM	<i>Sedum</i> x 'Autumn Fire'	1 GAL	POT	PLANT 2' O.C.
BA	262	BURGUNDY GLOW AJUGA	<i>Ajuga reptans</i> 'Burgundy Glow'	3" PLUG	TRAY	PLANT 1.5' O.C.
BF	68	BRANFORD BEAUTY FERN	<i>Athyrium</i> 'Branford Beauty'	1 QT	POT	PLANT 2' O.C.
BV	184	BRIDAL VEIL ASTILBE	<i>Astilbe x arendsii</i> 'Bridal Veil'	1 GAL	POT	PLANT 2' O.C.
LB	83	LUXURIANT BLEEDING HEART	<i>Dicentra formosa</i> 'Luxuriant'	1 GAL	POT	PLANT 1.5' O.C.
PH	78	PATRIOT HOSTA	<i>Hosta</i> 'Patriot'	1 GAL	POT	PLANT 2' O.C.

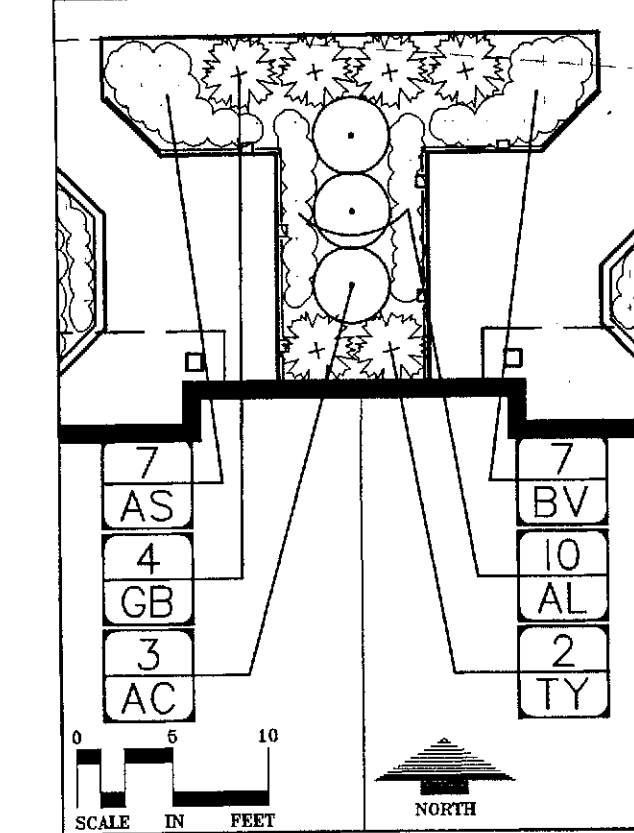
ENLARGEMENT A:



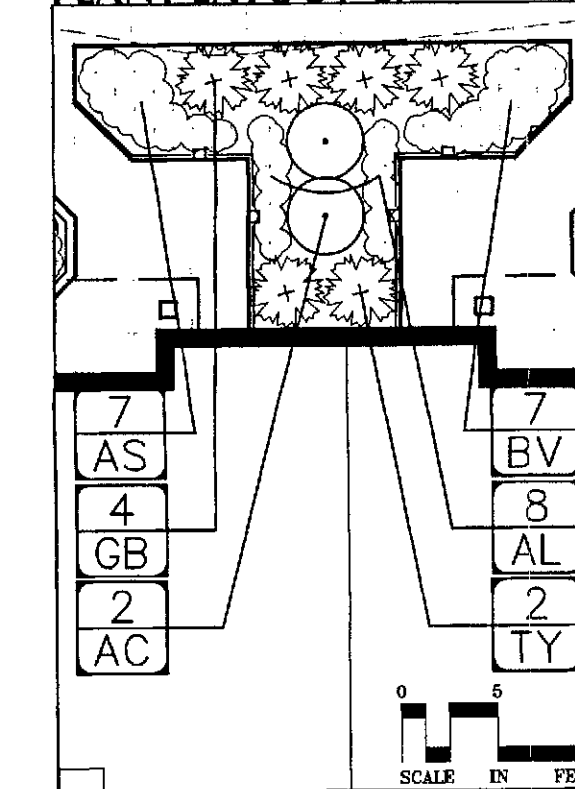
PLANT LAYOUT A:



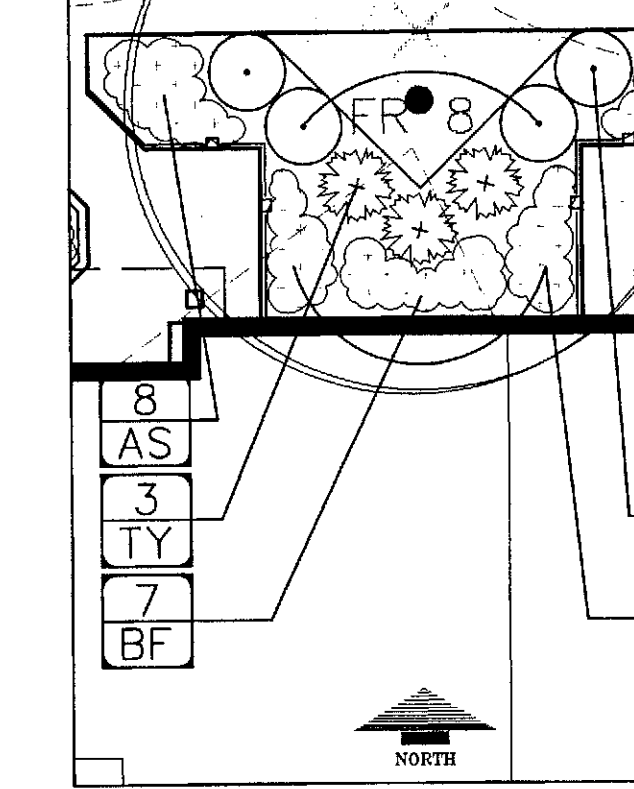
PLANT LAYOUT B:



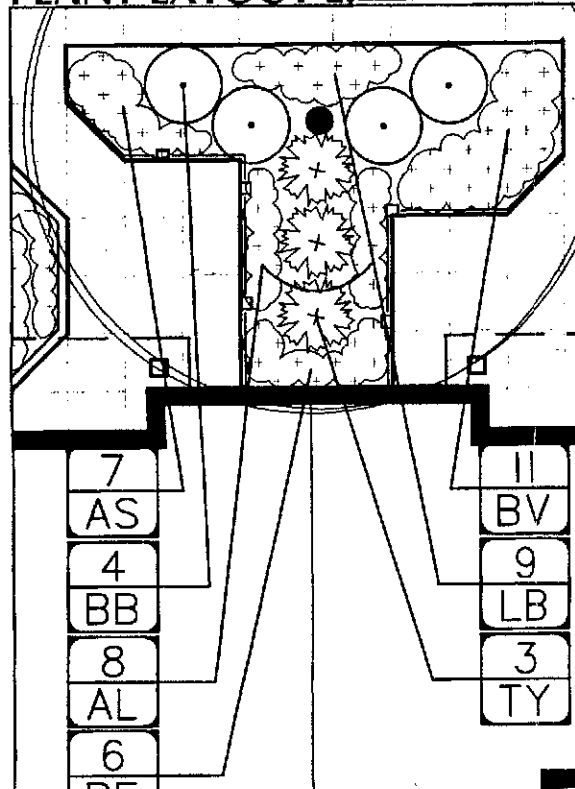
PLANT LAYOUT C:



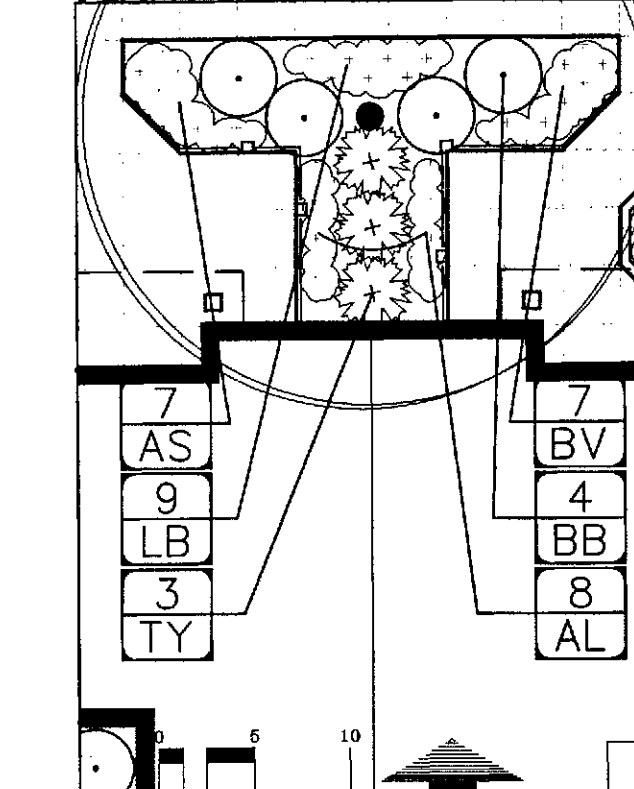
PLANT LAYOUT D:



PLANT LAYOUT E:



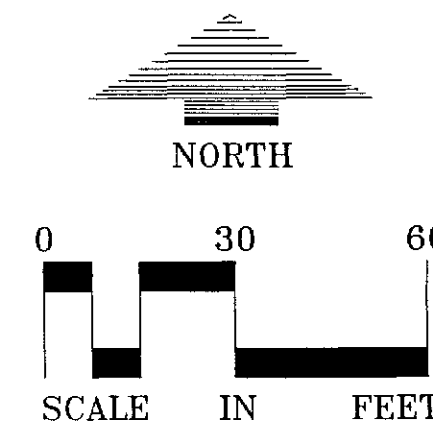
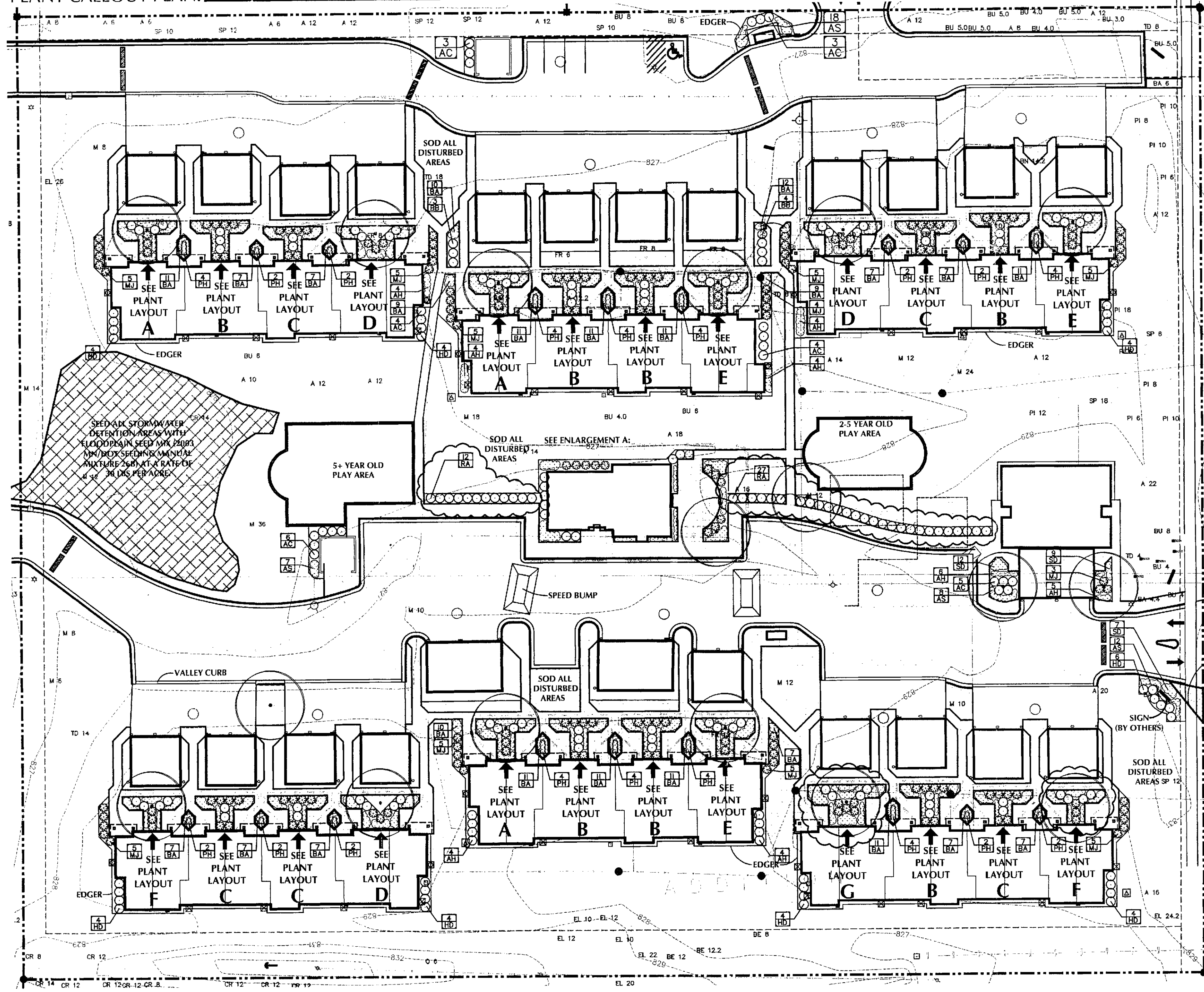
PLANT LAYOUT F:



PLANT LAYOUT G:



PLANT CALLOUT PLAN:



Project Name:

BLOOMING GLEN

Bloomington, Minnesota

Owner/Developer Name:

DOMINIUM MANAGEMENT SERVICES, INC.

2355 POLARIS LANE N.
PLYMOUTH, MN 55447

Professional Services:

LOUCKS ASSOCIATES

Planning • Civil Engineering • Land Surveying
Landscape Architecture • Environmental

7200 Hemlock Lane - Suite 300
Minneapolis, Minnesota 55369
Telephone: (763) 424-5505
Fax: (763) 424-5822
www.LoucksAssociates.com

© 2004

CADD Qualification:

CADD files prepared by the Consultant for this project are instruments of the Consultant's professional services for use solely with respect to this project. These CADD files shall not be used on other projects, for addition to this project, or for completion of this project by others without approval by the Consultant. With the Consultant's approval, others may be permitted to obtain copies of the CADD files for information and reference only. All intentional or unintentional revisions, additions, or deletions to these CADD files shall be made at the full risk of the party making such revisions, additions or deletions and that party shall hold harmless and indemnify the Consultant from any & all responsibilities, claims, and liabilities.

06129

Submital:

3-7-07	Planning Submission
3-30-07	Pricing Set
6-01-07	Construction Documents
7-31-07	Revised Per City Comments

Professional Signature:

I hereby certify that this plan, specification or report was prepared by me or under my direct supervision and that I am a duly Licensed Landscape Architect under the laws of the State of Minnesota.

Paul Kangas
Paul Kangas / ASLA

26017 License No. 7-19-07 Date

Quality Control:

PAK	Drawn By:	TJF
PAK	Checked By:	7-19-07

Sheet Index:

C1-1	Existing Conditions Plan
C1-2	Demolition Plan
C2-1	Site Plan
C2-2	Typical Patio Plan
C3-1	Grading Plan
C3-2	Storm Water Pollution Prevention Plan
C4-1	Utility Plan
C8-1	Project Details
L1-1	Landscape Plan
L1-2	Landscape Plant Callouts

Sheet Title:

LANDSCAPE PLANT CALLOUTS

Project No.:

06-129

Sheet No.:

L1-2