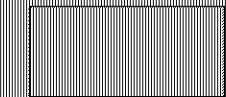
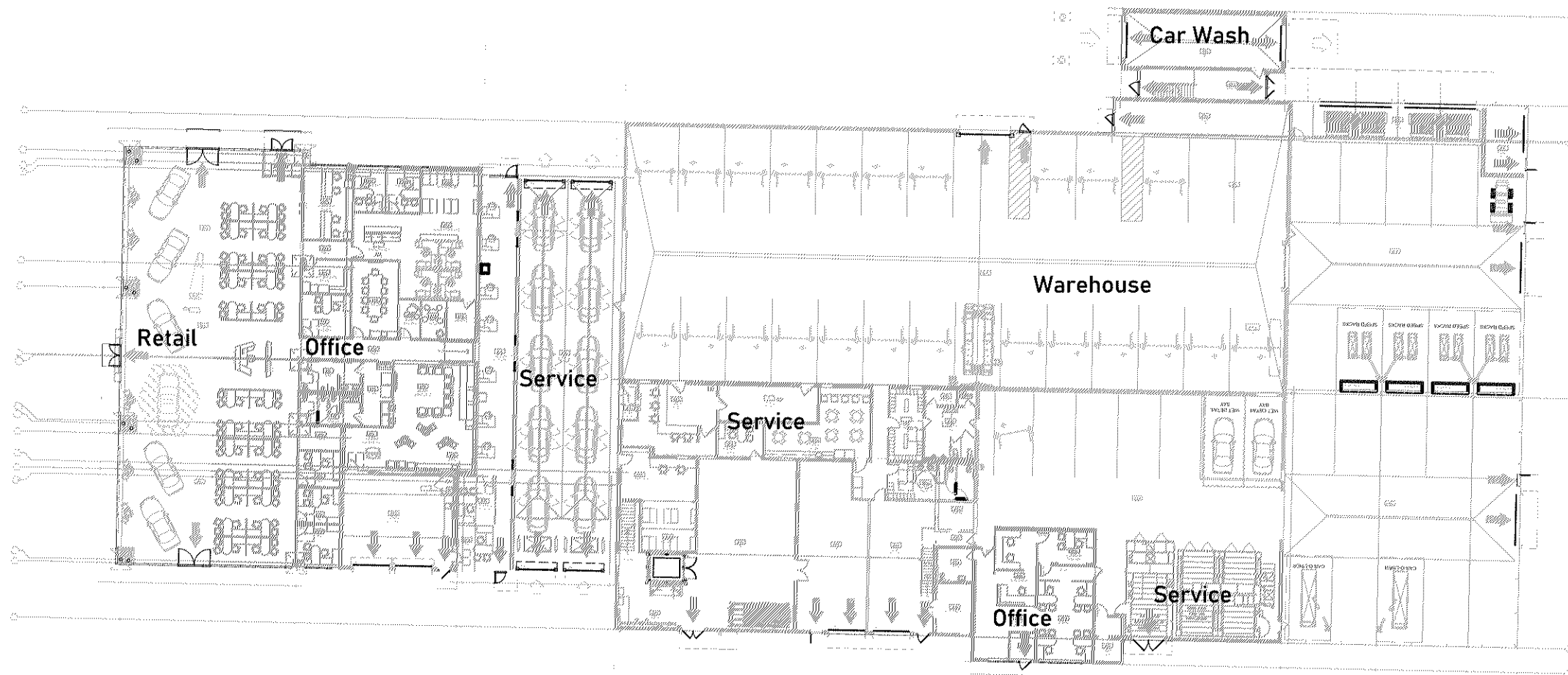


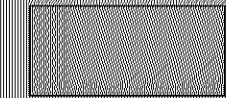
# Building Area Exhibit

LUTHER HYUNDAI • Bloomington, MN

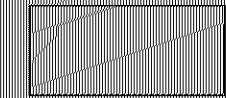
• 01.11.2023



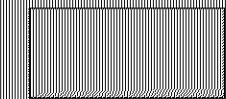
**Retail**  
3,208 SF



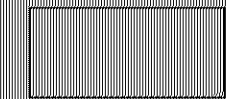
**Office**  
8,834 SF



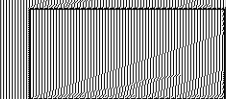
**Service**  
9,070 SF



**Service Bays**  
24 Major, 27 Minor



**Warehouse**  
7,292 SF



**Car Wash**  
776 SF

## Required Parking:

Service Area	Three stalls for each enclosed "major service" bay	24	72 Stalls
	Two stalls for each enclosed "minor service" bay	27	54 Stalls
Car Wash	One stall per 300 SF of GFA excluding service bays	9,070 SF	30 Stalls
	One stall per 375 SF of GFA	776 SF	2 Stalls
Office	One stall per 285 SF of office GFA	8,834 SF	31 Stalls
Large Item Retail	One stall per 220 SF of retail GFA	3,208 SF	15 Stalls
Warehouse	One stall per 1,000 SF of warehouse GFA	7,292 sf	7 Stalls

Total Parking Stalls Required 211 Stalls

LANDFORM  
From Site to Finish