

7514 OLIVER AVE S
MINNEAPOLIS, MN 55423
BUS: (612) 220-0152
email: info@elliottdesignbuild.com

SERVICE RESTORATION

PARKING LOT EXPANSION

SITE ADDRESS:

300 WEST 83RD STREET
BLOOMINGTON, MN 55431

PROJECT NO. E352

DATE 4/20/23

REVISION	NO.	DATE
CITY COMMENTS	1	5-22-23

PRELIMINARY NOT FOR CONSTRUCTION

CIVIL SHEET INDEX

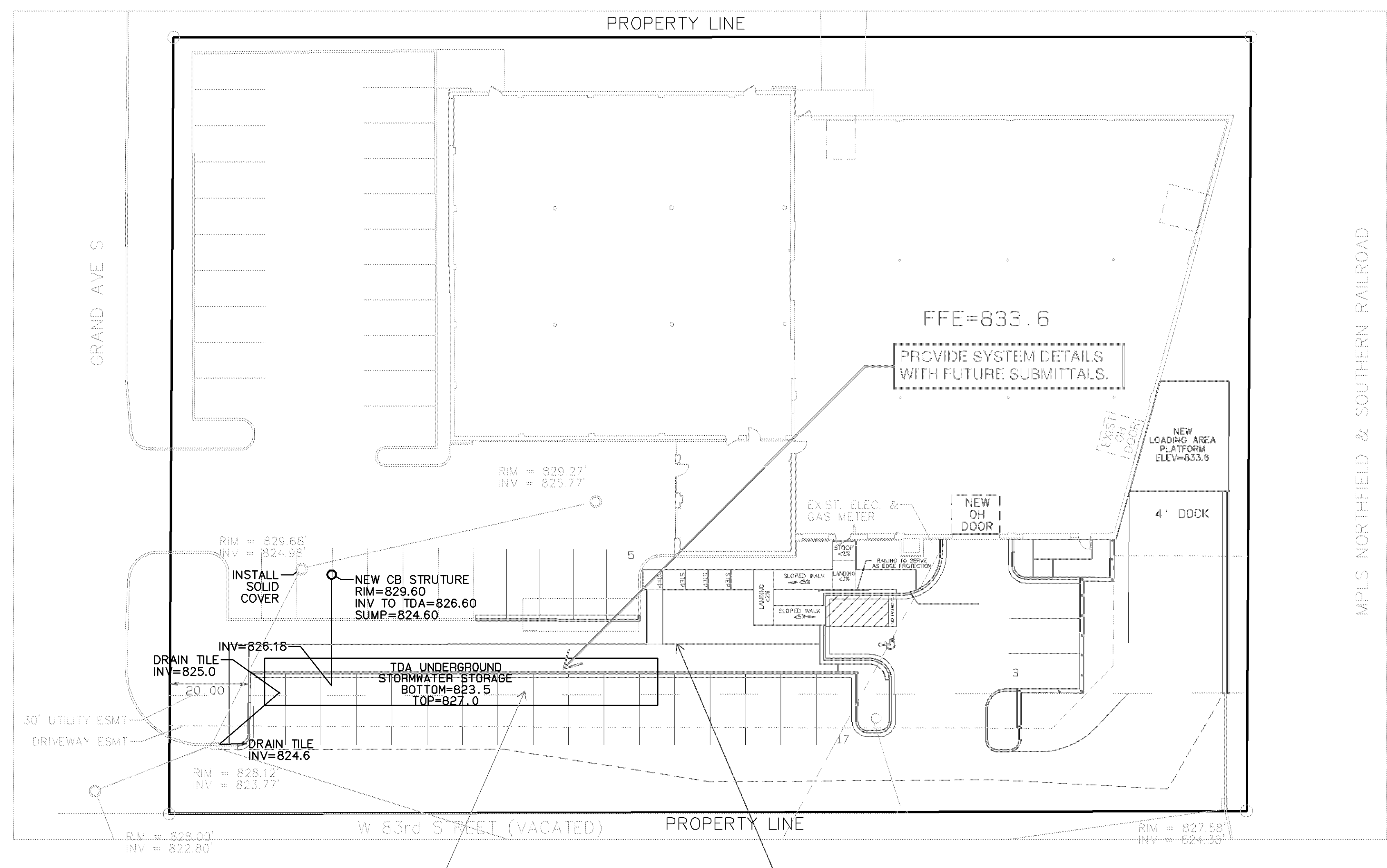
SHEET	TITLE
C1	REMOVALS, GRADING & EROSION
C2	SITE UTILITIES & STORMWATER
C3	SITE & LANDSCAPE PLAN

DRAWING TITLE:

SITE UTILITIES & STORMWATER

DRAWING NUMBER:

C2



UNDERGROUND STORAGE

Stormwater storage structure not permitted within public utility easement.

Hydrant coverage for the property does not meet minimum standards of 150 feet to all exterior walls of the building(s).

New parking arrangement decreases emergency vehicle access to the unsprinklered buildings by removing the driveway

AREA CALCULATIONS

AREA DISTURBED	10,823 SF
TOTAL PROPERTY AREA	54,061 SF
10,823/54,061=20% WHICH IS LESS THAN 50% DISTURBED	
IMPERVIOUS REMOVED:	1,123 SF
NEW IMPERVIOUS:	7,755 SF
NET INCREASE IMPERVIOUS: 6,632 SF	
INFILTRATION REQUIREMENT: 6.632X1.1/12=608 CF	

GENERAL NOTES:

1. INSTALL INLET PROTECTION AT ALL CATCH BASIN INLETS, WHICH RECEIVE RUNOFF FROM THE DISTURBED AREAS
2. ALL ELEVATIONS ARE FINISH GRADE.
3. CONTRACTOR IS RESPONSIBLE TO VISIT THE SITE PRIOR TO BIDDING TO ASSURE SCOPE OF WORK IS UNDERSTOOD AND IS TO CONTACT ENGINEER PRIOR TO BIDDING FOR ANY CLARIFICATION NEEDED. THERE WILL BE NO ADDITIONAL COMPENSATION FOR ITEMS THAT COULD HAVE BEEN CLARIFIED PRIOR TO BID SUBMITTALS.
4. STATE LAW REQUIRES NOTIFICATION OF GOPHER ONE CALL FOR LOCATION OF UTILITY OWNED LINES 48 HOURS PRIOR TO BEGINNING WORK. PRIVATE UTILITY LINES WILL NOT BE LOCATED AS PART OF GOPHER ONE CALL, BUT CAN BE LOCATED BY A CONTRACT LOCATOR OR OTHER SUITABLE MEANS. CONTRACTOR IS RESPONSIBLE FOR LOCATING ALL UTILITY LINES PRIOR TO CONSTRUCTION.

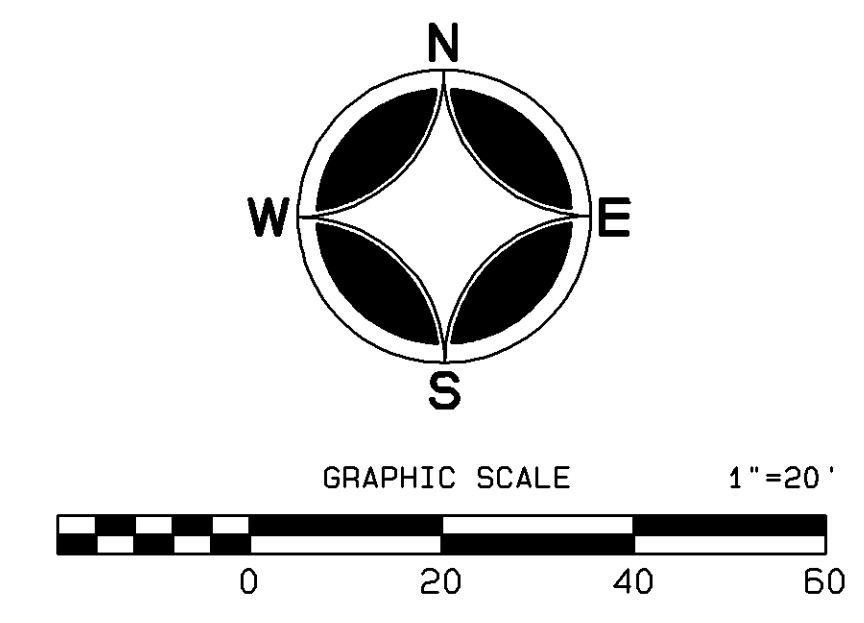
Must meet 2020 MN State Building Code

Must meet 2020 MN Accessibility Code.

Separate permit required for Parking Lot.

Building plans (for overhead door) must be signed by a MN licensed architect.

Provide a detailed code analysis with the Building plans.





7514 OLIVER AVE S
MINNEAPOLIS, MN 55423
BUS: (612) 220-0152
email: info@elliottdesignbuild.com

SERVICE RESTORATION
PARKING LOT EXPANSION

SITE ADDRESS:
**300 WEST 83RD STREET
BLOOMINGTON, MN 55431**

PROJECT NO. E352

DATE 4/20/23

REVISION	NO.	DATE
CITY COMMENTS	1	5-22-23

**PRELIMINARY
NOT FOR
CONSTRUCTION**

CIVIL SHEET INDEX

SHEET	TITLE
C1	REMOVALS, GRADING & EROSION
C2	SITE UTILITIES & STORMWATER
C3	SITE & LANDSCAPE PLAN

DRAWING TITLE:
**REMOVALS,
GRADING &
EROSION CONTROL**
DRAWING NUMBER:

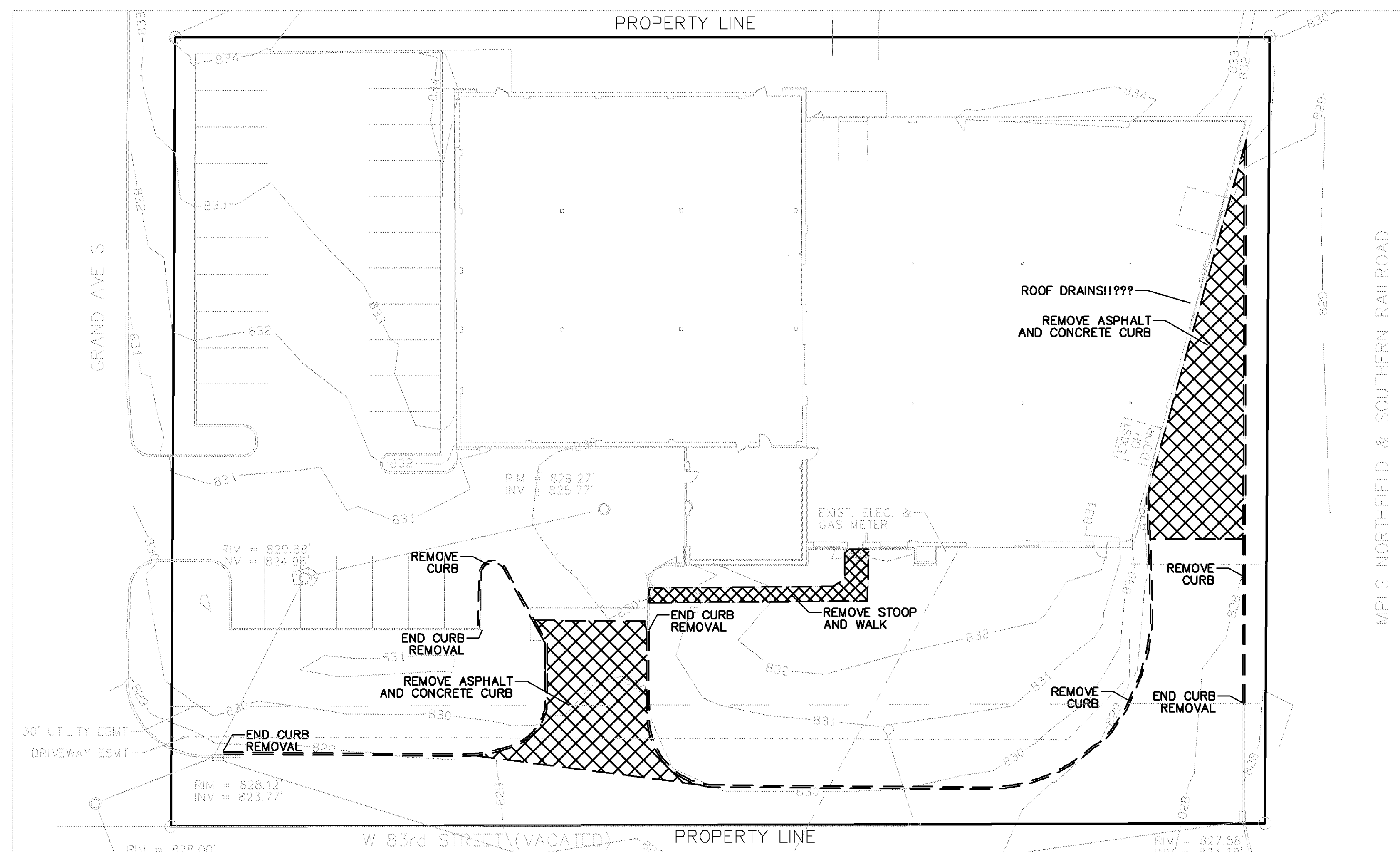
C1

GENERAL NOTES:

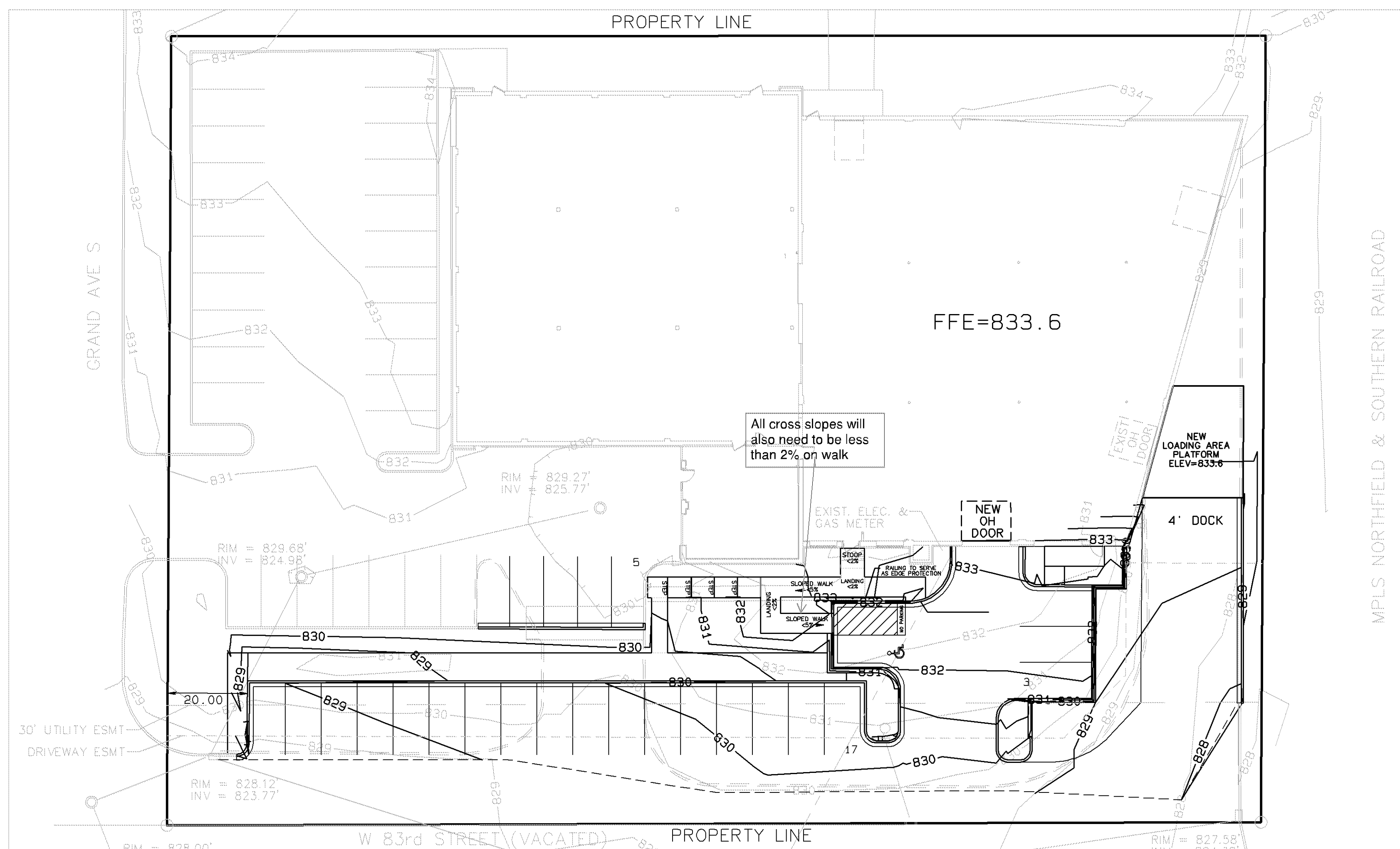
1. INSTALL INLET PROTECTION AT ALL CATCH BASIN INLETS, WHICH RECEIVE RUNOFF FROM THE DISTURBED AREAS
2. ALL ELEVATIONS ARE FINISH GRADE.
3. CONTRACTOR IS RESPONSIBLE TO VISIT THE SITE PRIOR TO BIDDING TO ASSURE SCOPE OF WORK IS UNDERSTOOD AND IS TO CONTACT ENGINEER PRIOR TO BIDDING FOR ANY CLARIFICATION NEEDED. THERE WILL BE NO ADDITIONAL COMPENSATION FOR ITEMS THAT COULD HAVE BEEN CLARIFIED PRIOR TO BID SUBMITALS.
4. STATE LAW REQUIRES NOTIFICATION OF GOPHER ONE CALL FOR LOCATION OF UTILITY OWNED LINES 48 HOURS PRIOR TO BEGINNING WORK. PRIVATE UTILITY LINES WILL NOT BE LOCATED AS PART OF GOPHER ONE CALL, BUT CAN BE LOCATED BY A CONTRACT LOCATOR OR OTHER SUITABLE MEANS. CONTRACTOR IS RESPONSIBLE FOR LOCATING ALL UTILITY LINES PRIOR TO CONSTRUCTION.

EROSION CONTROL STANDARD NOTES

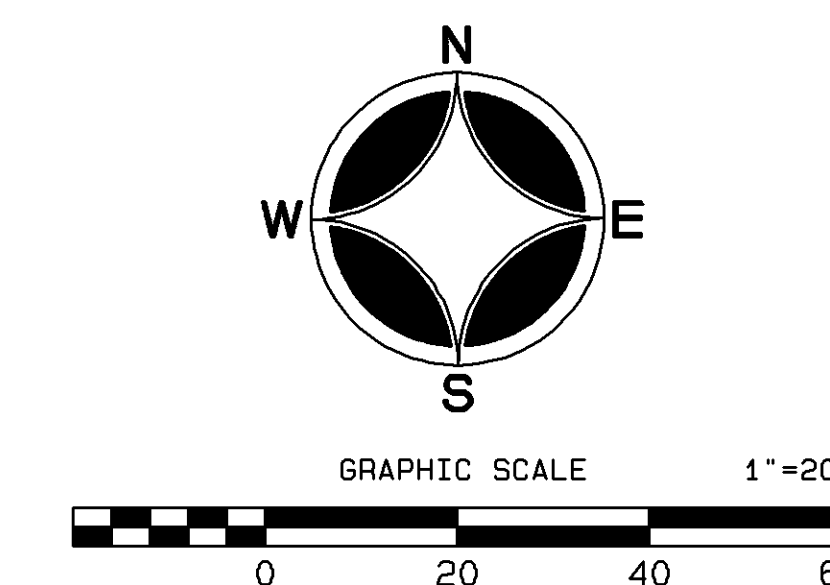
- 1) INSTALL SILT FENCE AT THE LOCATIONS SHOWN ON THE PLANS PRIOR TO BEGINNING CONSTRUCTION. INSTALL SILT FENCE WITH POST SPACING OF 4 FEET OR LESS. DRIVE POSTS AT LEAST 1 FOOT INTO THE GROUND. ANCHOR THE SILT FENCE FABRIC IN A TRENCH (AT LEAST 6 INCHES DEEP AND 6 INCHES WIDE) DUG ON THE UP-SLOPE SIDE OF THE SUPPORT POSTS. LAY THE FABRIC IN THE TRENCH AND THEN BACKFILL AND COMPACT. MAKE ANY SPLICES IN THE FABRIC AT A FENCE POST. AT SPLICES OVERLAP THE FABRIC AT LEAST 6 INCHES. FOLD IT OVER, AND SECURELY FASTEN IT TO THE FENCEPOST. SILT FENCE SUPPORTING POSTS SHALL BE 2-INCH SQUARE OR LARGER HARDWOOD, PINE, OR STANDARD T- OR U-SECTION STEEL POSTS. POSTS SHALL HAVE A MINIMUM LENGTH OF 30 INCHES PLUS BURIAL DEPTH.
- 2) REMOVE ALL TEMPORARY SYNTHETIC, STRUCTURAL, NON BIODEGRADABLE EROSION AND SEDIMENT CONTROL DEVICES AFTER THE SITE HAS UNDERGONE FINAL STABILIZATION. ALL HAZARDOUS MATERIALS INCLUDING FERTILIZERS AND LANDSCAPE CHEMICALS MUST BE STORED UNDER COVER TO MINIMIZE CONTACT WITH STORMWATER.
- 3) REMOVE ALL SOILS AND SEDIMENTS TRACKED OR OTHERWISE DEPOSITED ONTO PUBLIC AND PRIVATE PAVEMENT AREAS. REMOVAL SHALL BE ON A DAILY BASIS THROUGHOUT THE DURATION OF THE CONSTRUCTION. CLEAN PAVED ROADWAYS BY SHOVELING OR SWEEPING. STREET WASHING IS ALLOWED ONLY AFTER SHOVELING OR SWEEPING HAS REMOVED SEDIMENT.
- 4) MAINTAIN ALL TEMPORARY EROSION AND SEDIMENT CONTROL DEVICES IN PLACE UNTIL THE CONTRIBUTING DRAINAGE AREA HAS BEEN STABILIZED. INSPECT ALL TEMPORARY EROSION AND SEDIMENT CONTROL DEVICES ON A DAILY BASIS. REMOVE ACCUMULATED SEDIMENT DEPOSITS FROM BEHIND EROSION AND SEDIMENT CONTROL DEVICES AS NEEDED. ALL INFILTRATION AREAS MUST BE INSPECTED TO ENSURE THAT NO SEDIMENT FROM ONGOING CONSTRUCTION ACTIVITY IS REACHING THE INFILTRATION AREA AND THAT EQUIPMENT IS NOT BEING DRIVEN ACROSS THE AREA.
- 5) TEMPORARILY OR PERMANENTLY STABILIZE ALL DENUDED AREAS WHICH HAVE BEEN FINISH GRADED, AND ALL DENUDED AREAS IN WHICH GRADING OR SITE BUILDING CONSTRUCTION OPERATIONS ARE NOT ACTIVELY UNDERWAY AGAINST EROSION DUE TO RAIN, WIND AND RUNNING WATER WITHIN 14 DAYS. USE SEEDING AND MULCHING, EROSION CONTROL MATTING, AND/OR SODDING AND STAKING IN GREEN SPACE AREAS. USE EARLY APPLICATION OF GRAVEL BASE ON AREAS TO BE PAVED. ALL SLOPES GREATER OR EQUAL TO 3:1 SHALL HAVE EROSION CONTROL MEASURES INSTALLED IMMEDIATELY AFTER THE COMPLETION OF GRADING.
- 6) PERFORM ALL EROSION CONTROL PRACTICES IN ACCORDANCE WITH THE METHODS OUTLINED IN THE BEST MANAGEMENT PRACTICES HANDBOOK: "PROTECTING WATER QUALITY IN URBAN AREAS," PUBLISHED BY THE MINNESOTA POLLUTION CONTROL AGENCY.
- 7) INSTALL INLET PROTECTION AT ALL CATCH BASIN INLETS, WHICH RECEIVE RUNOFF FROM THE DISTURBED AREAS. CATCH BASIN INSERTS OR STAKED SILT FENCE IS THE BEST OPTION.
- 8) UNLESS OTHERWISE NOTED, THE APPROPRIATE DATES FOR SPRING SEEDING/SODDING ARE FROM APRIL 15 THROUGH JUNE 1. FALL SODDING IS GENERALLY ACCEPTABLE FROM AUGUST 15 THROUGH NOVEMBER 1. FALL SEEDING FROM AUGUST 15 THROUGH SEPTEMBER 15. SEEDING MUST TAKE PLACE PRIOR TO SEPTEMBER 15. AFTER SEPTEMBER 15, WAIT UNTIL NOVEMBER 1 TO PERFORM DORMANT SEEDING.
- 9) LOCATE SOIL OR DIRT STOCKPILES CONTAINING MORE THAN 10 CUBIC YARDS OF MATERIAL WITH A DOWN-SLOPE DRAINAGE LENGTH OF NO LESS THAN 25 FEET FROM THE TOE OF THE PILE TO A ROADWAY OR DRAINAGE CHANNEL. IF REMAINING FOR MORE THAN SEVEN DAYS, STABILIZE THE STOCKPILES BY MULCHING, VEGETATIVE COVER, TARPS, OR OTHER MEANS. CONTROL EROSION FROM ALL STOCKPILES BY PLACING SILT FENCE BARRIERS AROUND THE PILES. DURING STREET REPAIR, COVER CONSTRUCTION SOIL OR DIRT STOCKPILES LOCATED CLOSER THAN 25 FEET TO A ROADWAY OR DRAINAGE CHANNEL WITH TARPS, AND PROTECT STORM SEWER INLETS WITH BLOCK AND ROCK SEDIMENT FILTERS OR SILT FENCE.
- 10) CONSTRUCT ALL PROPOSED SIDE SLOPES WITH GRADES NOT EXCEEDING 3:1 (3 HORIZONTAL TO 1 VERTICAL).



REMOVALS



GRADING PLAN



7514 OLIVER AVE S
MINNEAPOLIS, MN 55423
BUS: (612) 220-0152
email: info@elliottdesignbuild.com

SERVICE RESTORATION
PARKING LOT EXPANSION

SITE ADDRESS:
300 WEST 83RD STREET
BLOOMINGTON, MN 55431

PROJECT NO. E352

DATE 4/20/23

REVISION	NO.	DATE
CITY COMMENTS	1	5-22-23

PRELIMINARY
NOT FOR
CONSTRUCTION

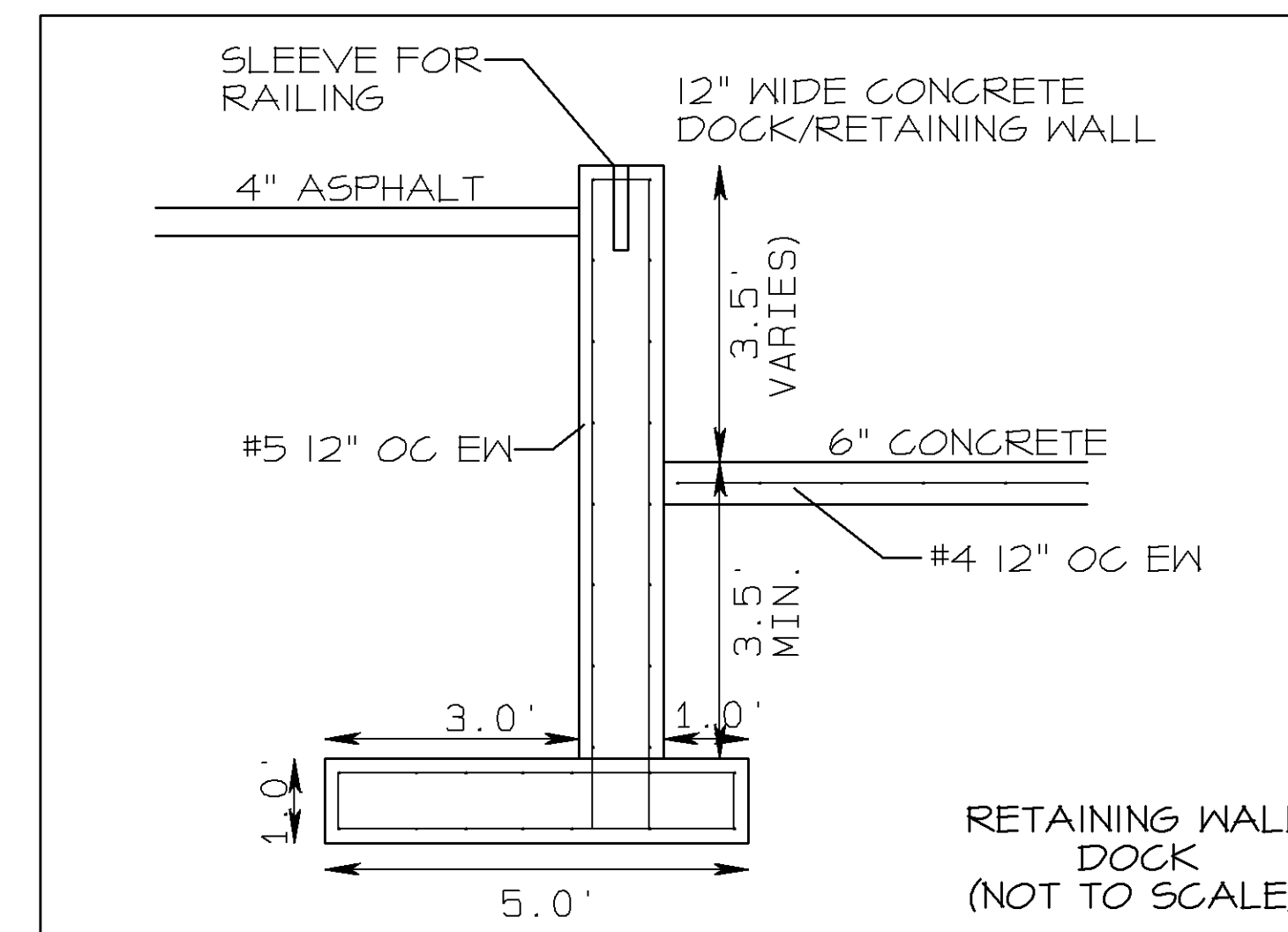
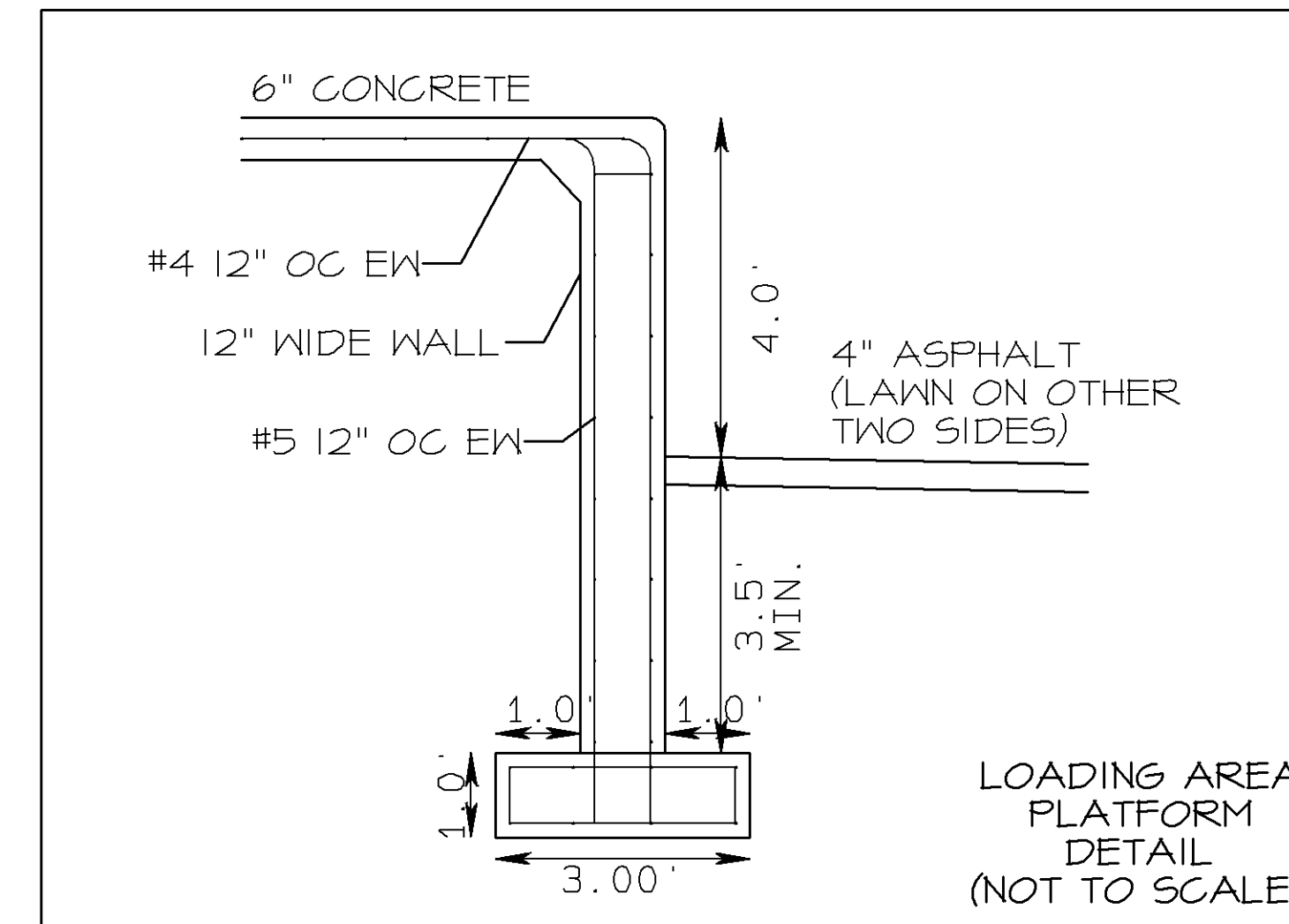
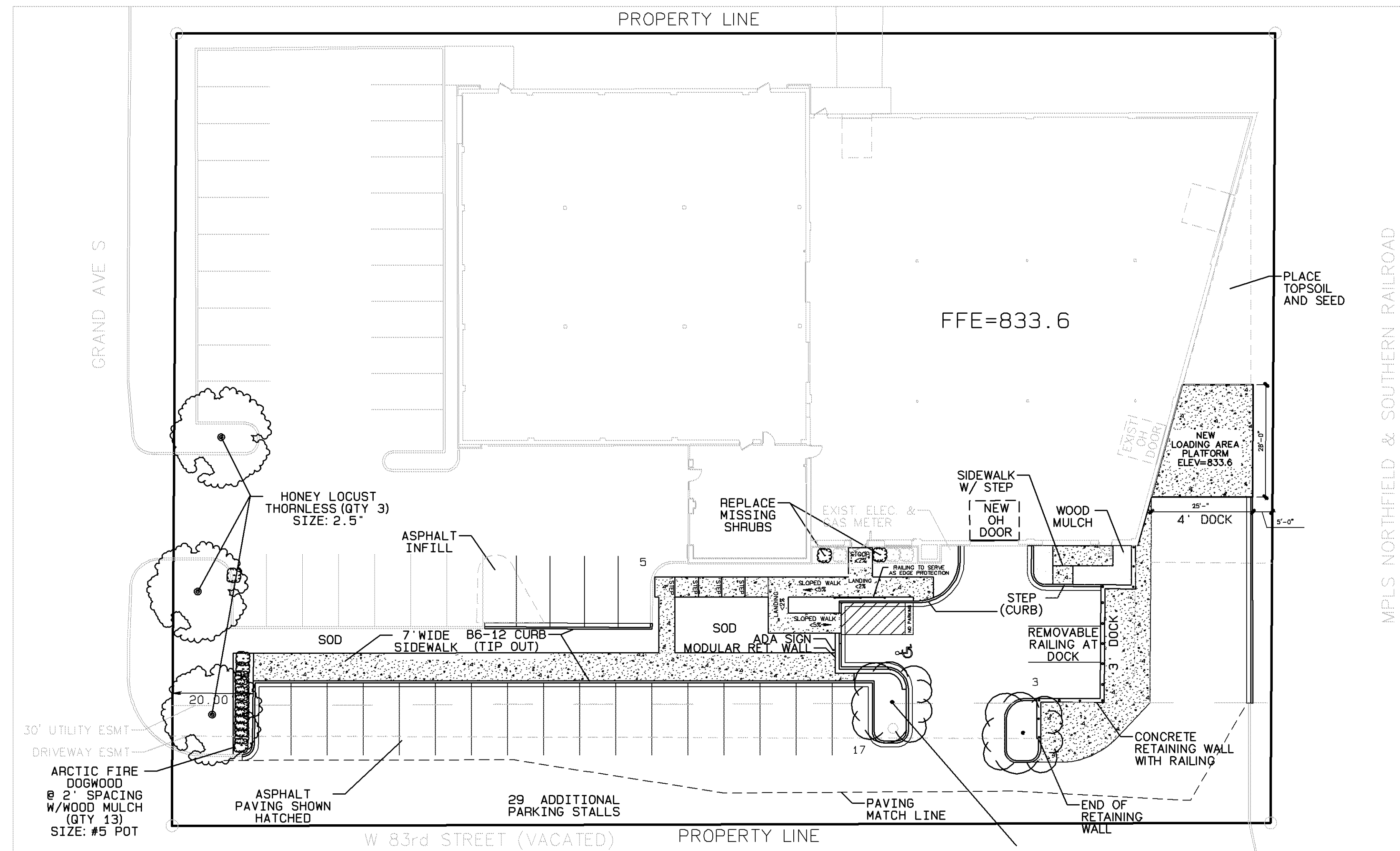
CIVIL SHEET INDEX

SHEET	TITLE
C1	REMOVALS, GRADING & EROSION
C2	SITE UTILITIES & STORMWATER
C3	SITE & LANDSCAPE PLAN

DRAWING TITLE:
SITE & LANDSCAPE PLAN

DRAWING NUMBER:

C3



Per Table 1106.1 of 2020 MN Accessibility Code - 2 accessible spaces would be required if total number of parking spaces is between 26-50.

LANDSCAPING SCHEDULE

SYMBOL	NAME	SIZE	QTY
	HONEY LOCUST, THORNLESS	2.5"	(3)
	CRAP, SPRING SNOW	1.5"	(2)
	SPIREA, BIRCH LEAF	#5	(13)

Retaining walls over 4' in height (measured from bottom of footing to top of wall) requires a Building permit and plans designed by a MN licensed structural engineer.

