



7514 OLIVER AVE S
MINNEAPOLIS, MN 55423
BUS: (612) 220-0152
email: info@elliottdesignbuild.com

SERVICE RESTORATION

PARKING LOT
EXPANSION

SITE ADDRESS:

300 WEST 83RD STREET
BLOOMINGTON, MN 55431

PROJECT NO. E352

DATE 4/20/23

REVISION	NO.	DATE
CITY COMMENTS	1	5-22-23
CITY COMMENTS	2	9-20-23

CERTIFICATION

I HEREBY CERTIFY THAT THIS DRAWING WAS PREPARED BY ME OR UNDER MY DIRECT SUPERVISION AND THAT I AM A DULY REGISTERED ENGINEER UNDER THE LAWS OF THE STATE OF MINNESOTA
Lance A. Elliott
REGISTRATION NO. 28862

CIVIL SHEET INDEX

SHEET	TITLE
C1	REMOVALS, GRADING & EROSION
C2	SITE UTILITIES & STORMWATER
C3	SITE & LANDSCAPE PLAN

DRAWING TITLE:

REMOVALS,
GRADING &
EROSION CONTROL

DRAWING NUMBER:

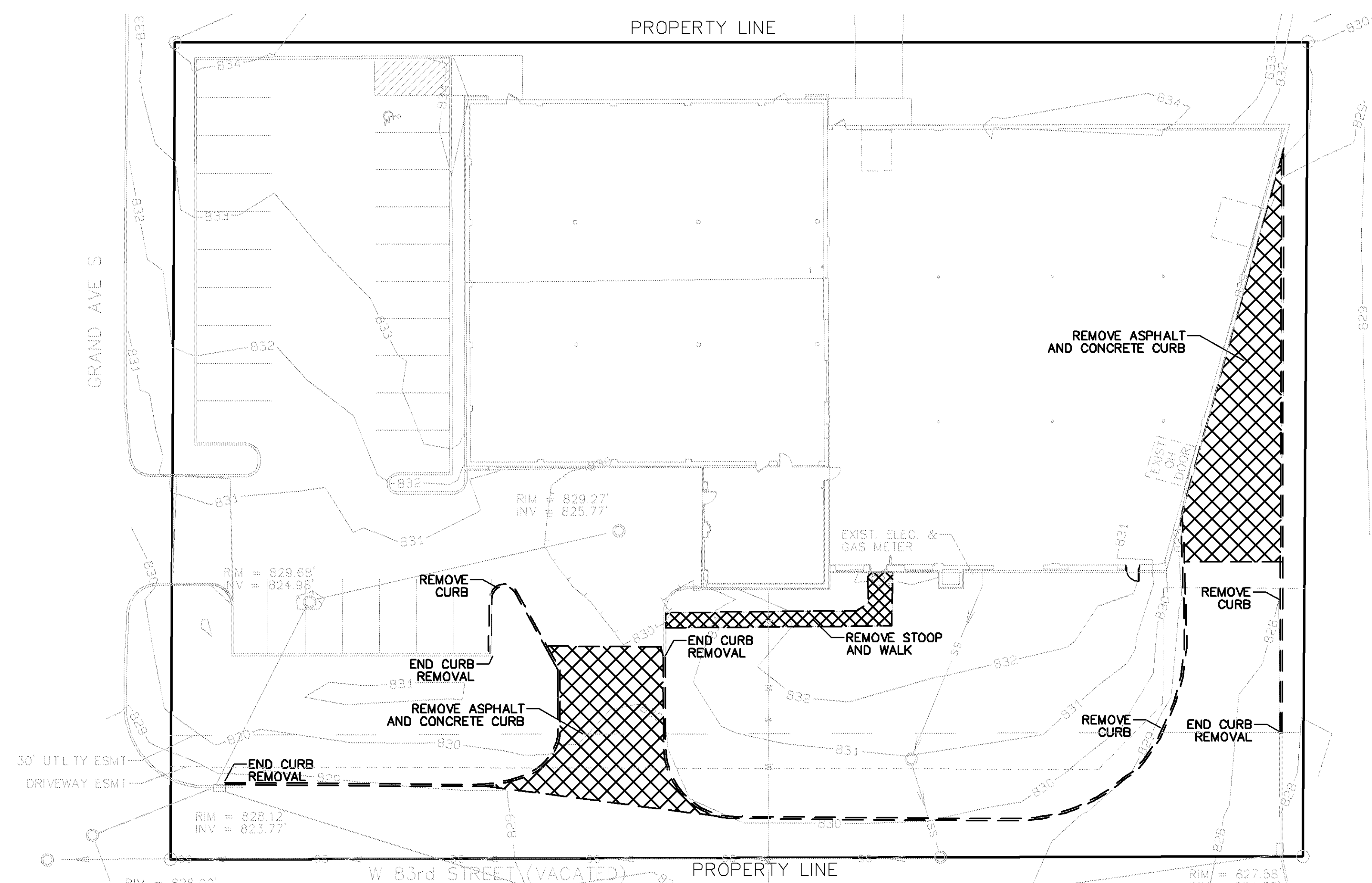
C1

GENERAL NOTES:

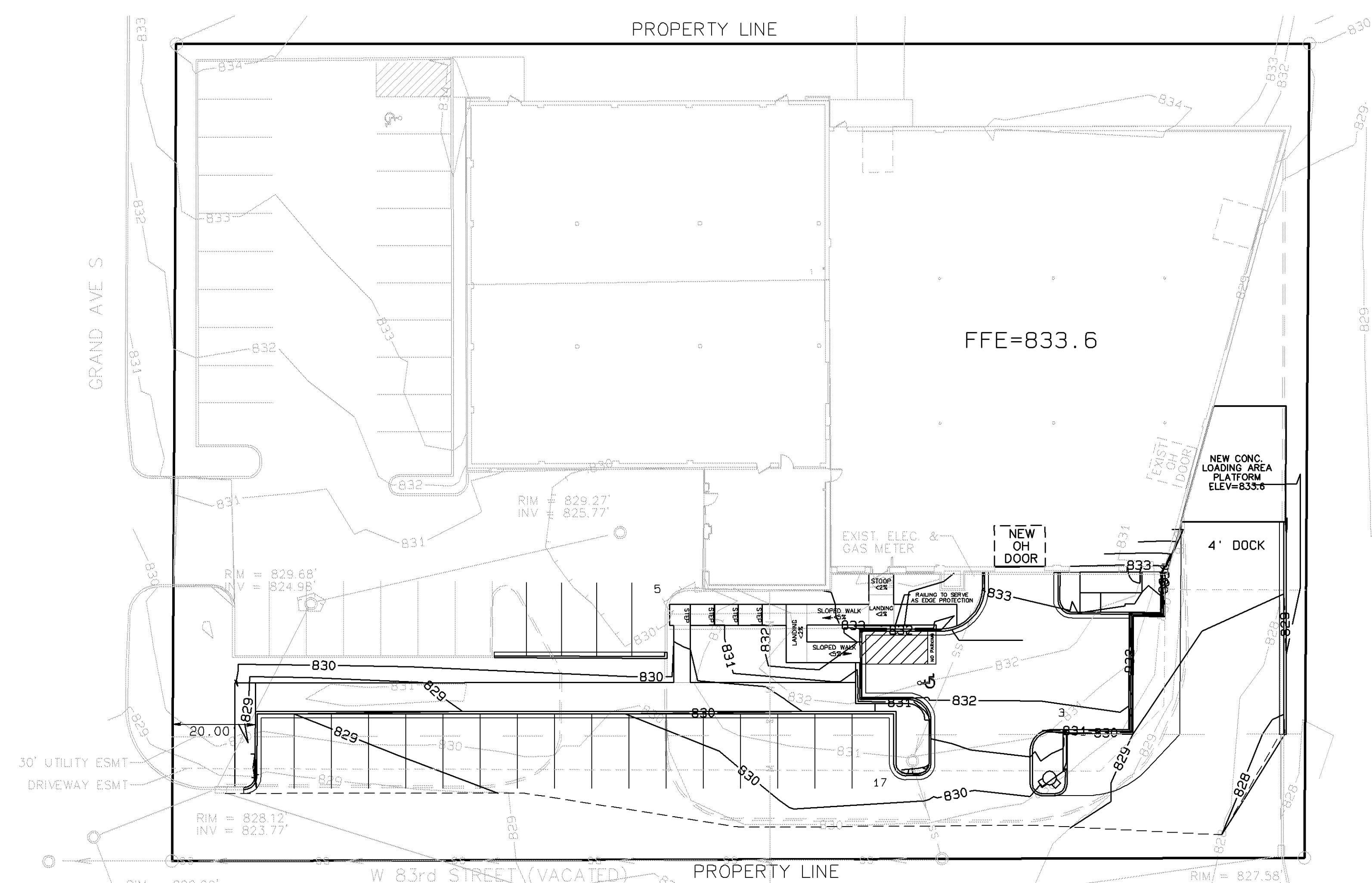
1. INSTALL INLET PROTECTION AT ALL CATCH BASIN INLETS, WHICH RECEIVE RUNOFF FROM THE DISTURBED AREAS
2. ALL ELEVATIONS ARE FINISH GRADE.
3. CONTRACTOR IS RESPONSIBLE TO VISIT THE SITE PRIOR TO BIDDING TO ASSURE SCOPE OF WORK IS UNDERSTOOD AND IS TO CONTACT ENGINEER PRIOR TO BIDDING FOR ANY CLARIFICATION NEEDED. THERE WILL BE NO ADDITIONAL COMPENSATION FOR ITEMS THAT COULD HAVE BEEN CLARIFIED PRIOR TO BID SUBMITALS.
4. STATE LAW REQUIRES NOTIFICATION OF GOPHER ONE CALL FOR LOCATION OF UTILITY OWNED LINES 48 HOURS PRIOR TO BEGINNING WORK. PRIVATE UTILITY LINES WILL NOT BE LOCATED AS PART OF GOPHER ONE CALL, BUT CAN BE LOCATED BY A CONTRACT LOCATOR OR OTHER SUITABLE MEANS. CONTRACTOR IS RESPONSIBLE FOR LOCATING ALL UTILITY LINES PRIOR TO CONSTRUCTION.

EROSION CONTROL STANDARD NOTES

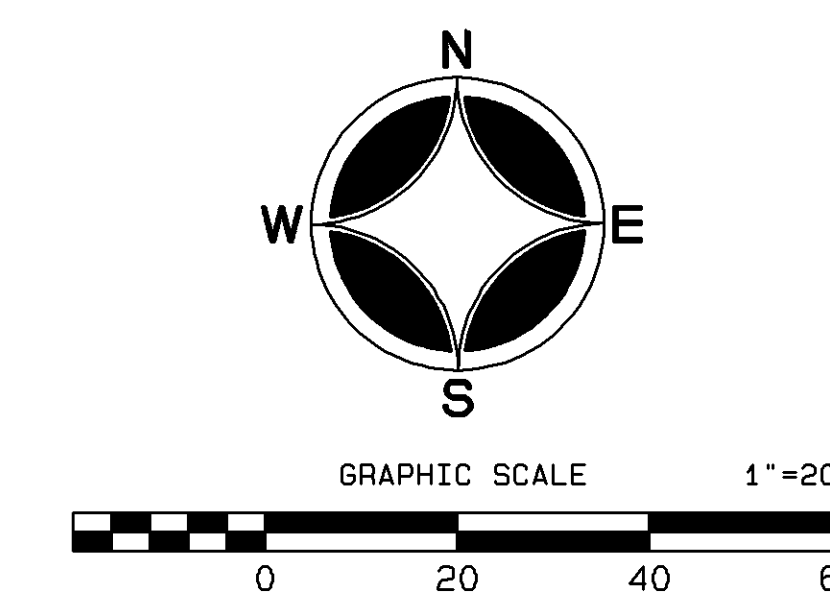
- 1) INSTALL SILT FENCE AT THE LOCATIONS SHOWN ON THE PLANS PRIOR TO BEGINNING CONSTRUCTION. INSTALL SILT FENCE WITH POST SPACING OF 4 FEET OR LESS. DRIVE POSTS AT LEAST 1 FOOT INTO THE GROUND. ANCHOR THE SILT FENCE FABRIC IN A TRENCH (AT LEAST 6 INCHES DEEP AND 6 INCHES WIDE) DUG ON THE UP-SLOPE SIDE OF THE SUPPORT POSTS. LAY THE FABRIC IN THE TRENCH AND THEN BACKFILL AND COMPACT. MAKE ANY SPLICES IN THE FABRIC AT A FENCE POST. AT SPLICES, OVERLAP THE FABRIC AT LEAST 6 INCHES, FOLD IT OVER, AND SECURELY FASTEN IT TO THE FENCEPOST. SILT FENCE SUPPORTING POSTS SHALL BE 2-INCH SQUARE OR LARGER HARDWOOD, PINE, OR STANDARD T- OR U-SECTION STEEL POSTS. POSTS SHALL HAVE A MINIMUM LENGTH OF 30 INCHES PLUS BURIAL DEPTH.
- 2) REMOVE ALL TEMPORARY SYNTHETIC, STRUCTURAL, NON BIODEGRADABLE EROSION AND SEDIMENT CONTROL DEVICES AFTER THE SITE HAS UNDERGONE FINAL STABILIZATION. ALL HAZARDOUS MATERIALS INCLUDING FERTILIZERS AND LANDSCAPE CHEMICALS MUST BE STORED UNDER COVER TO MINIMIZE CONTACT WITH STORMWATER.
- 3) REMOVE ALL SOILS AND SEDIMENTS TRACKED OR OTHERWISE DEPOSITED ONTO PUBLIC AND PRIVATE PAVEMENT AREAS. REMOVAL SHALL BE ON A DAILY BASIS THROUGHOUT THE DURATION OF THE CONSTRUCTION. CLEAN PAVED ROADWAYS BY SHOVELING OR SWEEPING. STREET WASHING IS ALLOWED ONLY AFTER SHOVELING OR SWEEPING HAS REMOVED SEDIMENT.
- 4) MAINTAIN ALL TEMPORARY EROSION AND SEDIMENT CONTROL DEVICES IN PLACE UNTIL THE CONTRIBUTING DRAINAGE AREA HAS BEEN STABILIZED. INSPECT ALL TEMPORARY EROSION AND SEDIMENT CONTROL DEVICES ON A DAILY BASIS. REMOVE ACCUMULATED SEDIMENT DEPOSITS FROM BEHIND EROSION AND SEDIMENT CONTROL DEVICES AS NEEDED. ALL INFILTRATION AREAS MUST BE INSPECTED TO ENSURE THAT NO SEDIMENT FROM ONGOING CONSTRUCTION ACTIVITY IS REACHING THE INFILTRATION AREA AND THAT EQUIPMENT IS NOT BEING DRIVEN ACROSS THE AREA.
- 5) TEMPORARILY OR PERMANENTLY STABILIZE ALL DENUDED AREAS WHICH HAVE BEEN FINISH GRADED, AND ALL DENUDED AREAS IN WHICH GRADING OR SITE BUILDING CONSTRUCTION OPERATIONS ARE NOT ACTIVELY UNDERWAY AGAINST EROSION DUE TO RAIN, WIND AND RUNNING WATER WITHIN 14 DAYS. USE SEEDING AND MULCHING, EROSION CONTROL MATTING, AND/OR SODDING AND STAKING IN GREEN SPACE AREAS. USE EARLY APPLICATION OF GRAVEL BASE ON AREAS TO BE PAVED. ALL SLOPES GREATER OR EQUAL TO 3:1 SHALL HAVE EROSION CONTROL MEASURES INSTALLED IMMEDIATELY AFTER THE COMPLETION OF GRADING.
- 6) PERFORM ALL EROSION CONTROL PRACTICES IN ACCORDANCE WITH THE METHODS OUTLINED IN THE BEST MANAGEMENT PRACTICES HANDBOOK: "PROTECTING WATER QUALITY IN URBAN AREAS," PUBLISHED BY THE MINNESOTA POLLUTION CONTROL AGENCY.
- 7) INSTALL INLET PROTECTION AT ALL CATCH BASIN INLETS, WHICH RECEIVE RUNOFF FROM THE DISTURBED AREAS. CATCH BASIN INSERTS OR STAKED SILT FENCE IS THE BEST OPTION.
- 8) UNLESS OTHERWISE NOTED, THE APPROPRIATE DATES FOR SPRING SEEDING/SODDING ARE FROM APRIL 15 THROUGH JUNE 1. FALL SODDING IS GENERALLY ACCEPTABLE FROM AUGUST 15 THROUGH NOVEMBER 1. FALL SEEDING FROM AUGUST 15 THROUGH SEPTEMBER 15. SEEDING MUST TAKE PLACE PRIOR TO SEPTEMBER 15. AFTER SEPTEMBER 15, WAIT UNTIL NOVEMBER 1 TO PERFORM DORMANT SEEDING.
- 9) LOCATE SOIL OR DIRT STOCKPILES CONTAINING MORE THAN 10 CUBIC YARDS OF MATERIAL WITH A DOWN-SLOPE DRAINAGE LENGTH OF NO LESS THAN 25 FEET FROM THE TOE OF THE PILE TO A ROADWAY OR DRAINAGE CHANNEL. IF REMAINING FOR MORE THAN SEVEN DAYS, STABILIZE THE STOCKPILES BY MULCHING, VEGETATIVE COVER, TARPS, OR OTHER MEANS. CONTROL EROSION FROM ALL STOCKPILES BY PLACING SILT FENCE BARRIERS AROUND THE PILES. DURING STREET REPAIR, COVER CONSTRUCTION SOIL OR DIRT STOCKPILES LOCATED CLOSER THAN 25 FEET TO A ROADWAY OR DRAINAGE CHANNEL WITH TARPS, AND PROTECT STORM SEWER INLETS WITH BLOCK AND ROCK SEDIMENT FILTERS OR SILT FENCE.
- 10) CONSTRUCT ALL PROPOSED SIDE SLOPES WITH GRADES NOT EXCEEDING 3:1 (3 HORIZONTAL TO 1 VERTICAL).



REMOVALS



GRADING PLAN



7514 OLIVER AVE S
MINNEAPOLIS, MN 55423
BUS: (612) 220-0152
email: info@elliottdesignbuild.com

SERVICE RESTORATION
PARKING LOT EXPANSION

SITE ADDRESS:
300 WEST 83RD STREET
BLOOMINGTON, MN 55431

PROJECT NO. E352

DATE 4/20/23

REVISION	NO.	DATE
CITY COMMENTS	1	5-22-23
CITY COMMENTS	2	9-20-23

CERTIFICATION
I HEREBY CERTIFY THAT THIS DRAWING WAS PREPARED BY ME OR UNDER MY DIRECT SUPERVISION AND THAT I AM A DULY REGISTERED ENGINEER UNDER THE LAWS OF THE STATE OF MINNESOTA
Lance A. Elliott
Lance A. Elliott
REGISTRATION NO. 26862

CIVIL SHEET INDEX

SHEET	TITLE
C1	REMOVALS, GRADING & EROSION
C2	SITE UTILITIES & STORMWATER
C3	SITE & LANDSCAPE PLAN

DRAWING TITLE:
SITE UTILITIES & STORMWATER

DRAWING NUMBER:

C2

GENERAL NOTES:

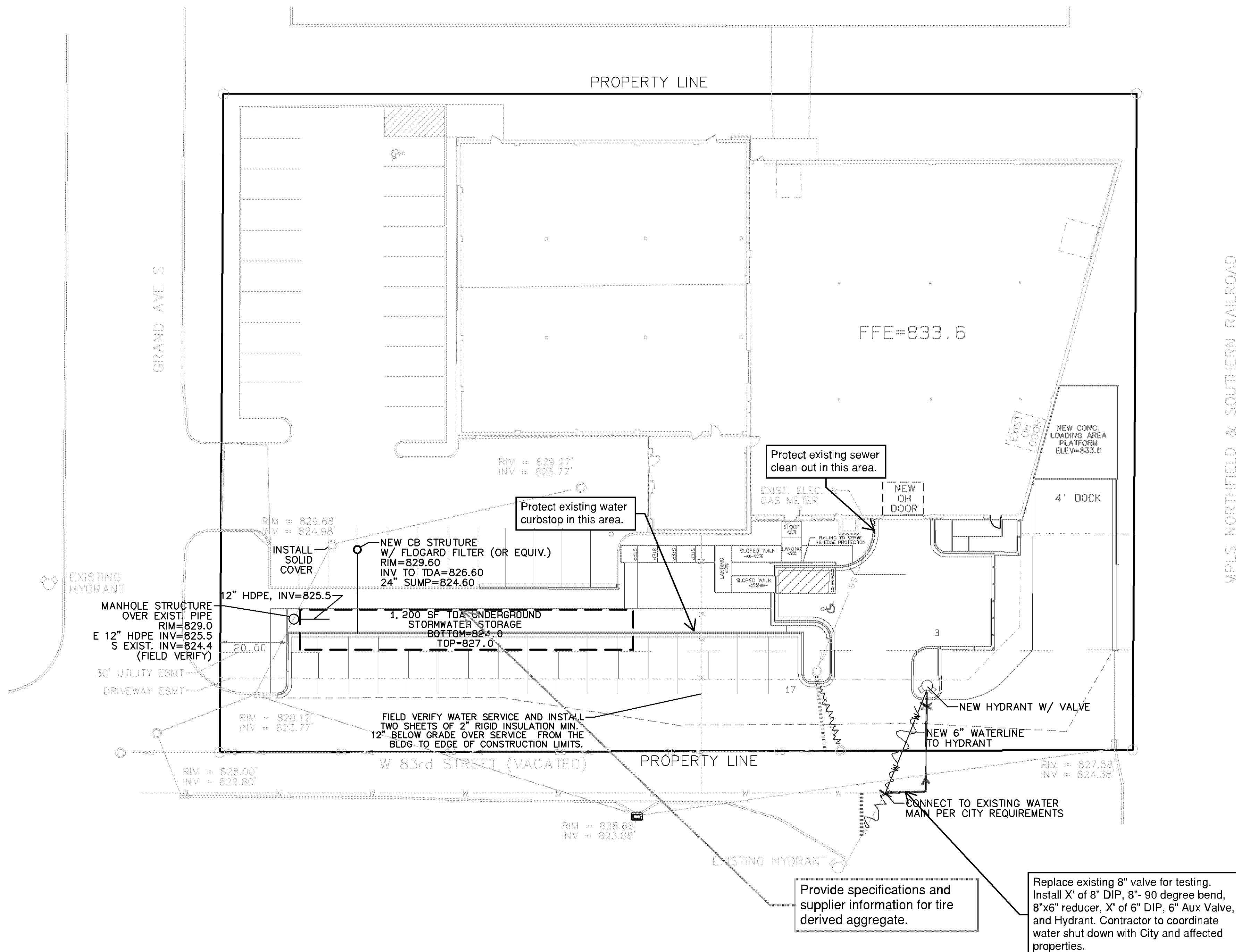
- INSTALL INLET PROTECTION AT ALL CATCH BASIN INLETS, WHICH RECEIVE RUNOFF FROM THE DISTURBED AREAS
- ALL ELEVATIONS ARE FINISH GRADE.
- CONTRACTOR IS RESPONSIBLE TO VISIT THE SITE PRIOR TO BIDDING TO ASSURE SCOPE OF WORK IS UNDERSTOOD AND IS TO CONTACT ENGINEER PRIOR TO BIDDING FOR ANY CLARIFICATION NEEDED. THERE WILL BE NO ADDITIONAL COMPENSATION FOR ITEMS THAT COULD HAVE BEEN CLARIFIED PRIOR TO BID SUBMITALS.
- STATE LAW REQUIRES NOTIFICATION OF GOPHER ONE CALL FOR LOCATION OF UTILITY OWNED LINES 48 HOURS PRIOR TO BEGINNING WORK. PRIVATE UTILITY LINES WILL NOT BE LOCATED AS PART OF GOPHER ONE CALL, BUT CAN BE LOCATED BY A CONTRACT LOCATOR OR OTHER SUITABLE MEANS. CONTRACTOR IS RESPONSIBLE FOR LOCATING ALL UTILITY LINES PRIOR TO CONSTRUCTION.

AREA CALCULATIONS SUMMARY

AREA DISTURBED	10,823 SF
TOTAL PROPERTY AREA	54,061 SF
10,823/54,061=20% WHICH IS LESS THAN 50% DISTURBED	
IMPERVIOUS REMOVED:	1,123 SF
NEW IMPERVIOUS:	7,755 SF
NET INCREASE IMPERVIOUS:	6,632 SF
INFILTRATION REQUIREMENT:	6,632X1.1/12=608 CF

DETAILED AREA CALCULATIONS

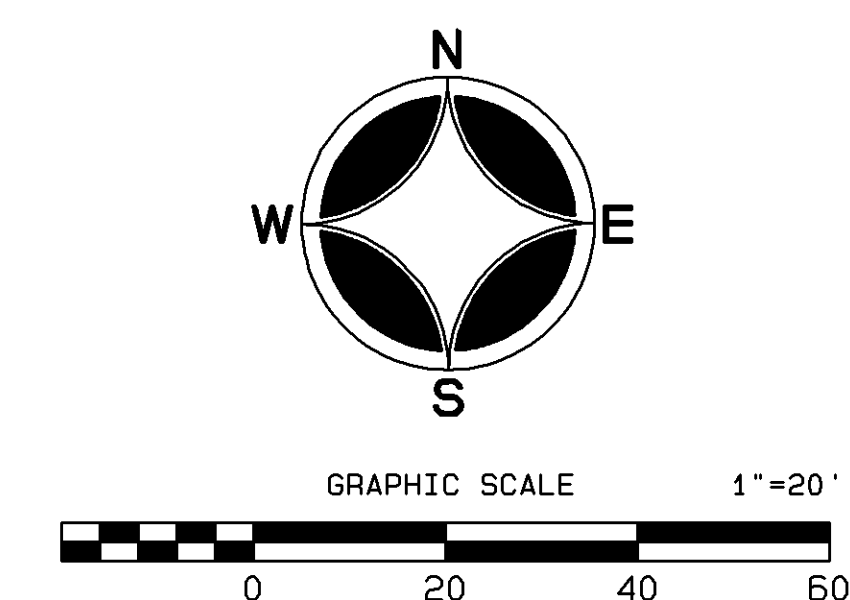
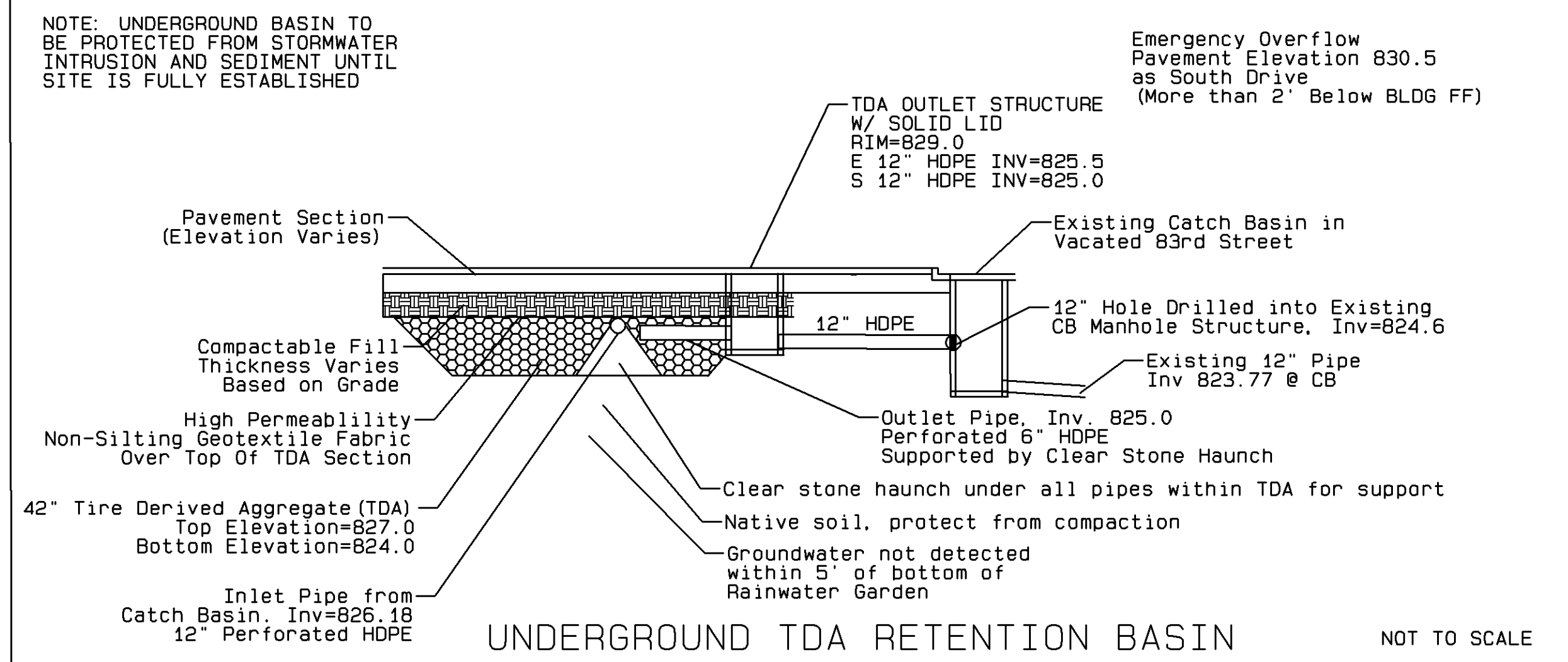
TOTAL SITE:	54,061 SF
EXISTING IMPERVIOUS	
BUILDING	19,175 SF
WALK	590 SF
PARKING/DOCK	19,091 SF
TOTAL IMPERVIOUS	38,856 SF
PROPOSED IMPERVIOUS	
BUILDING	19,175 SF
WALK	1,567 SF
PARKING/DOCK	24,746 SF
TOTAL IMPERVIOUS	45,488 SF
ADDITIONAL IMPERVIOUS:	6,632 SF



Provide specifications and supplier information for tire derived aggregate.

Replace existing 8" valve for testing. Install X' of 8" DIP, 8"-90 degree bend, 8"x6" reducer, X' of 6" DIP, 6" Aux Valve, and Hydrant. Contractor to coordinate water shut down with City and affected properties.

NOTE: UNDERGROUND BASIN TO BE PROTECTED FROM STORMWATER INTRUSION AND SEDIMENT UNTIL SITE IS FULLY ESTABLISHED



Maintain emergency vehicle access and circulation throughout the property.

Hydrant coverage shall be provided within 150' of all portions of the structure and clearly visible/unobstructed from the emergency vehicle access lane.



7514 OLIVER AVE S
MINNEAPOLIS, MN 55423
BUS: (612) 220-0152
email: info@elliottdesignbuild.com

SERVICE RESTORATION
PARKING LOT EXPANSION

SITE ADDRESS:
300 WEST 83RD STREET
BLOOMINGTON, MN 55431

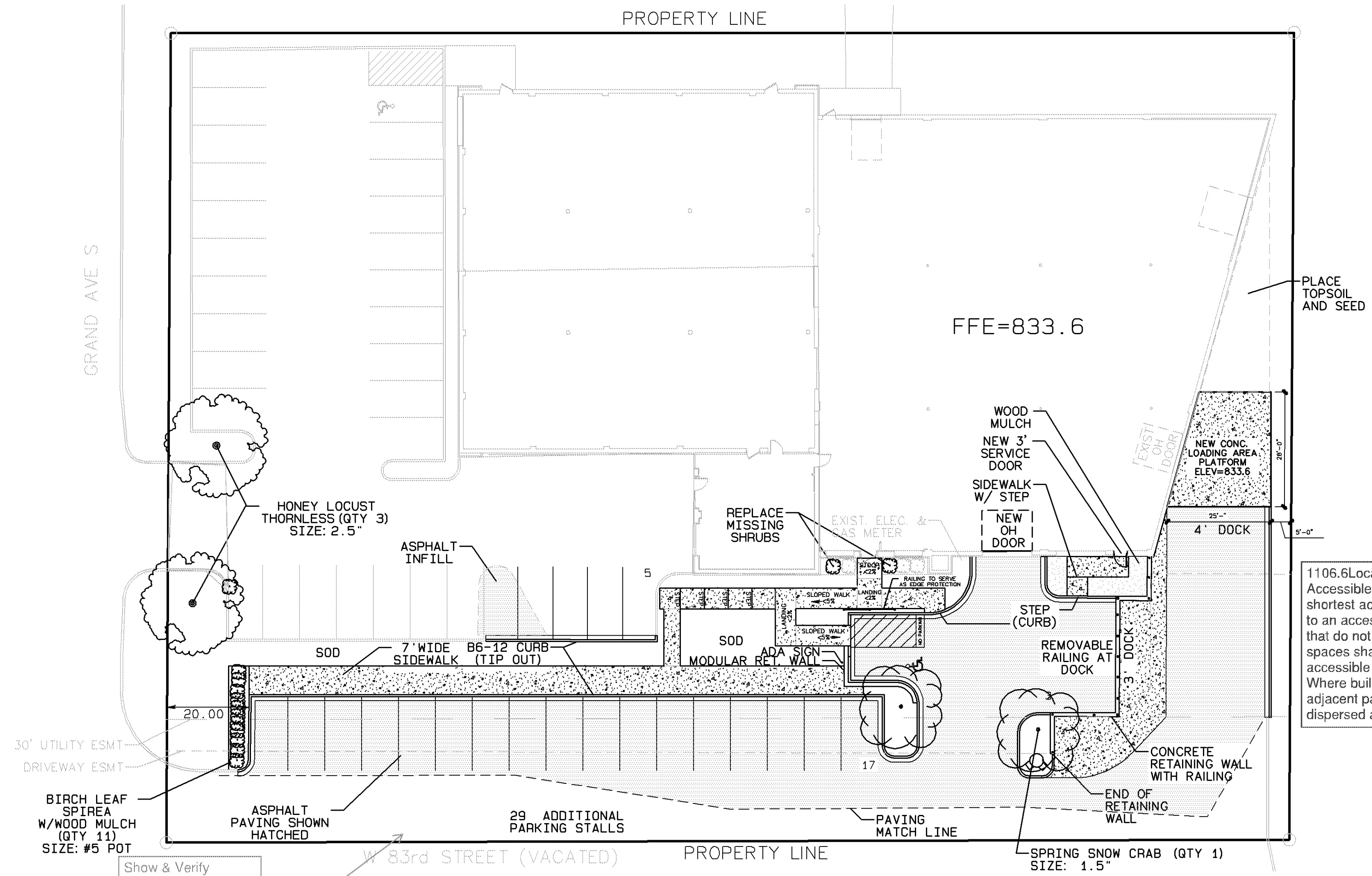
PROJECT NO. E352

DATE	4/20/23	
REVISION	NO.	DATE
CITY COMMENTS	1	5-22-23
CITY COMMENTS	2	9-20-23

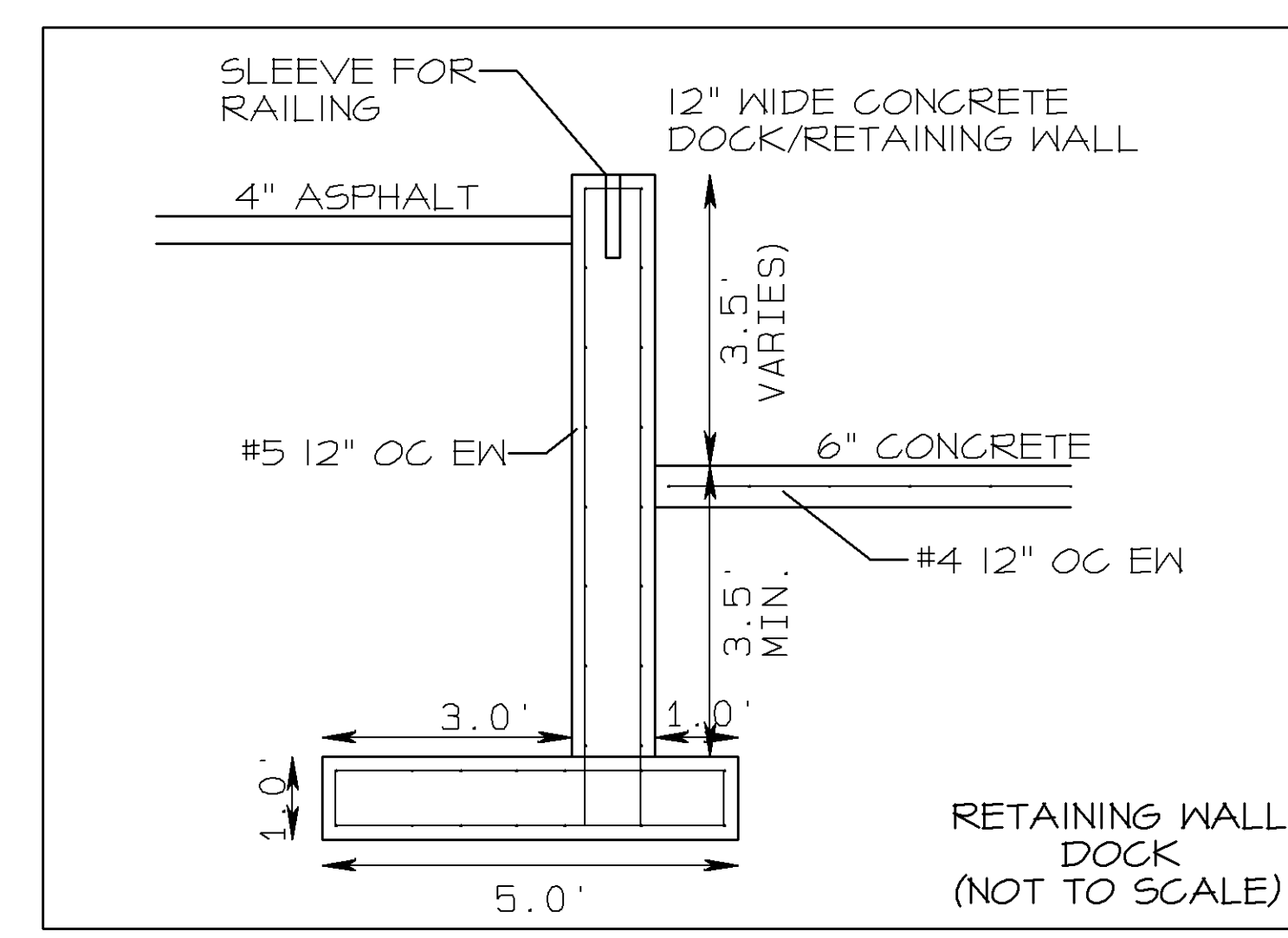
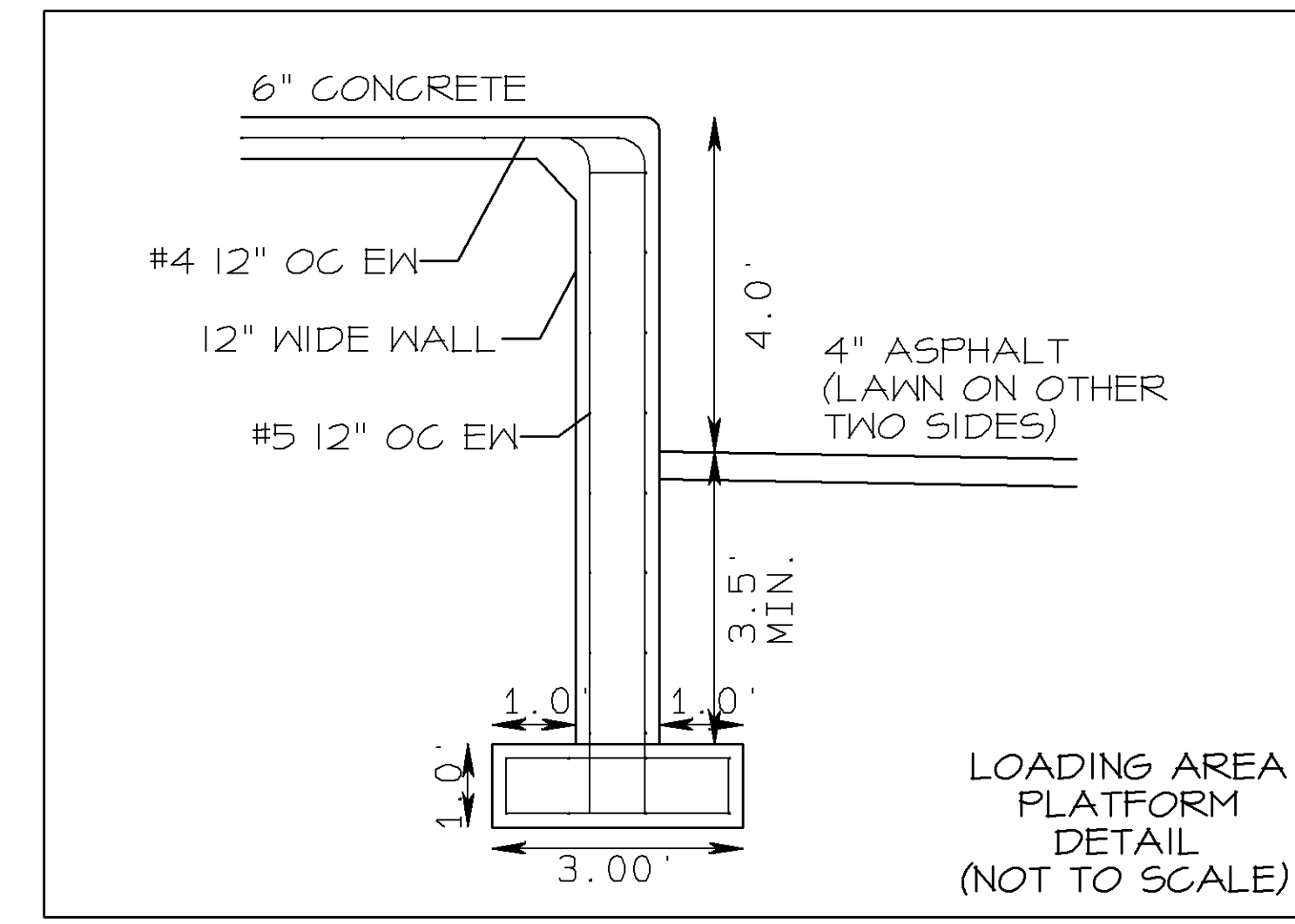
CERTIFICATION
I HEREBY CERTIFY THAT THIS DRAWING WAS PREPARED BY ME OR UNDER MY DIRECT SUPERVISION AND THAT I AM A DULY REGISTERED ENGINEER UNDER THE LAWS OF THE STATE OF MINNESOTA
Lance A. Elliott
REGISTRATION NO. 26862

CIVIL SHEET INDEX	
SHEET	TITLE
C1	REMOVALS, GRADING & EROSION
C2	SITE UTILITIES & STORMWATER
C3	SITE & LANDSCAPE PLAN

DRAWING TITLE:
SITE & LANDSCAPE PLAN
DRAWING NUMBER:
C3



1105.6 Location.
Accessible parking spaces shall be located on the shortest accessible route of travel from adjacent parking to an accessible building entrance. In parking facilities that do not serve a particular building, accessible parking spaces shall be located on the shortest route to an accessible pedestrian entrance to the parking facility. Where buildings have multiple accessible entrances with adjacent parking, accessible parking spaces shall be dispersed and located near the accessible entrances.



PARKING CALCULATIONS

EXISTING:
REGULAR PARKING STALLS: 26
ADA PARKING STALLS: 1
TOTAL PARKING STALLS: 27

PROPOSED:
REGULAR PARKING STALLS: 48
ADA PARKING STALLS: 2
TOTAL PARKING STALLS: 50

ADDITIONAL PARKING STALLS ADDED: 23

ADA STALLS REQUIRED: 2 PROVIDED: 2 (ADA REQUIREMENTS MET)

REGULAR PARKING STALL DIM: 9' X 18'
MINIMUM DRIVE ISLE WIDTH: 24'

Per 502.7 of 2020 MN Accessibility Code:
Signs shall be centered at the head end of the parking space a maximum of 96 inches from the head of the parking space, and be mounted 60 inches minimum and 66 inches maximum above the floor of the parking space, measured to the bottom of the sign.

For every 6 or fraction of 6 accessible spaces, at least one shall be a van-accessible parking space.

Must meet 2020 MN State Building Code

Must meet 2020 MN Accessibility Code.

Parking Lot permit required for any work done in parking lot.

LANDSCAPE NOTES:
1. PROVIDE 4" DEPTH DARK BROWN HARDWOOD MULCH IN ALL LANDSCAPED AREAS
2. MIN. 6" SALVAGED TOPSOIL FOR ALL LAWN AND LANDSCAPED AREAS

LANDSCAPING SCHEDULE			
SYMBOL	NAME	SIZE	QTY
	HONEY LOCUST, THORNLESS	2.5"	(2)
	AUTUMN BLAZE MAPLE	2.5"	(1)
	CRAP, SPRING SNOW	1.5"	(2)
	SPIREA, BIRCH LEAF	#5	(11)

