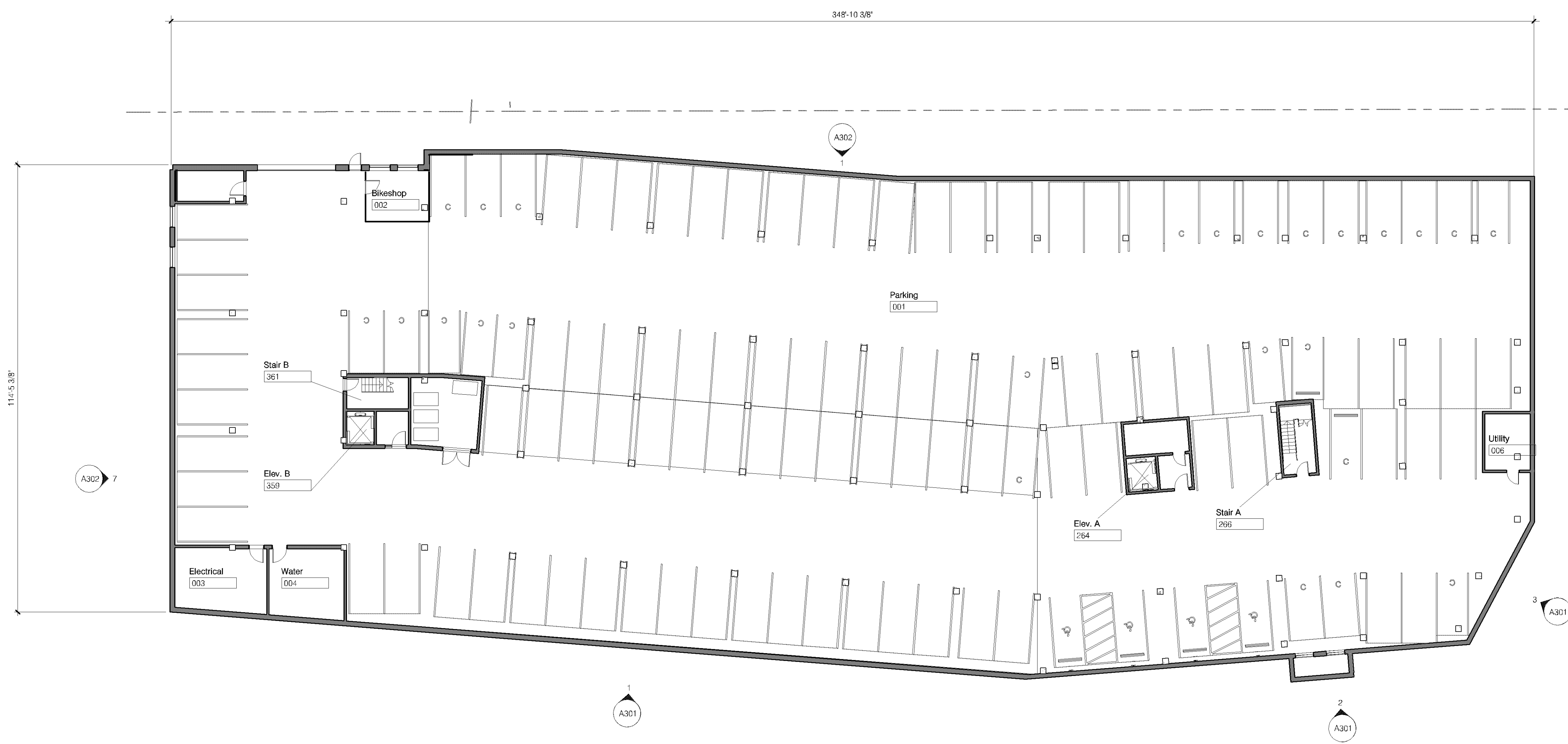


This access does not need to be 24 feet wide. Consider reducing the width. Less than 20 feet wide is possible depending on the angle.

10/11/2023 12:30:08 PM C:\Rent Project Files\23-001-A22-Central\_Jeremy.rvt

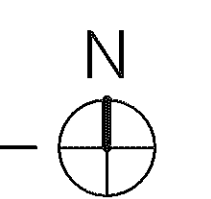


**GENERAL PLAN NOTES:**

1. DIMENSIONS AT EXTERIOR WALLS ARE TO OUTSIDE FACE OF SHEATHING
2. DIMENSIONS AT INTERIOR WALLS ARE TO FACE OF WALL UNLESS OTHERWISE NOTED
3. DIMENSIONS AT UNIT DEMISING ARE TO CENTERLINE OF WALLS
4. DIMENSIONS AT CMU ARE TO FACE OF CMU UNLESS OTHERWISE NOTED
5. DIMENSIONS AT CAST-IN-PLACE CONCRETE WALLS ARE TO FACE OF WALL UNLESS OTHERWISE NOTED
6. EXTEND ALL SHAFTS TO UNDERSIDE OF ROOF SHEATHING OR TOP OF ROOF PENETRATIONS WHERE APPLICABLE
7. NO PENETRATIONS OR OPENINGS ALLOWED IN SHAFT WALLS UNLESS THEY EXPRESSLY SERVE THE SHAFT
8. ALL RESIDENTIAL DEMISING WALLS AT METAL STUD LOCATIONS ARE TYPE K2, K3, K4A, K3, K4B, AND K8B 1HR FIRE RATING, WITH ACOUSTIC RATING
9. ALL RESIDENTIAL DEMISING WALLS AT WOOD STUD LOCATIONS ARE TYPE V3, V6, V6A, V6, V8, AND V8B 1HR FIRE RATING, WITH ACOUSTIC RATING
10. ALL RESIDENTIAL CORRIDOR WALLS AT METAL STUD LOCATIONS ARE TYPE B6, 1 HR FIRE RATING, WITH ACOUSTIC RATING - UNLESS OTHERWISE NOTED
11. ALL RESIDENTIAL CORRIDOR WALLS AT WOOD STUD LOCATIONS ARE TYPE W6, 1 HR FIRE RATING, WITH ACOUSTIC RATING - UNLESS OTHERWISE NOTED
12. ALL UNITS ARE TYPE B ACCESSIBLE UNLESS OTHERWISE NOTED
13. MAINTAIN 8'-2" MIN. CLEAR HEIGHT AT PARKING AREAS INDICATED ON PLANS. ALL OTHER PARKING AREAS SHALL PROVIDE 7'-2" MIN. CLEAR HEIGHT
14. PROVIDE WALL BLOCKING AT KITCHEN WALLS AND ALL BATHROOM LOCATIONS INDICATED ON SHEET A1000

Hose valves shall be provided throughout the lower level of the parking garage within 130' of all areas of the garage if dry standpipe or within 200 feet if installing a wet standpipe

**1** A001.0 - SUBLEVEL 1 PLAN - OVERALL  
A100.B 1/16" = 1'-0"



**URBANWORKS**

© URBANWORKS ARCHITECTURE LLC 2023  
901 NORTH THIRD STREET, SUITE 145, MINNEAPOLIS, MN 55401

CONSULTANT

**PRELIMINARY**  
NOT FOR CONSTRUCTION

SCHEMATIC DESIGN  
10.11.2023

REVISIONS

DATE 10/11/2023  
PROJECT # 23-001  
PHASE SCHEMATIC DESIGN  
DRAWN BY DFL  
CHECKED BY

**SUBLEVEL PLAN - OVERALL**

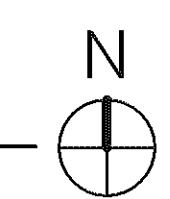
**A100.0**

SR - 700 American

10/11/2023 12:56:10 PM C:\Rent Project Files\23-001\A22\_Central\_Architect\Rev\A101.dwg



**1** A101.0 - LEVEL 1 PLAN - OVERALL  
 A101.0 1/16" = 1'-0"



**GENERAL PLAN NOTES:**

1. DIMENSIONS AT EXTERIOR WALLS ARE TO OUTSIDE FACE OF SHEATHING
2. DIMENSIONS AT INTERIOR WALLS ARE TO FACE OF WALL UNLESS OTHERWISE NOTED
3. DIMENSIONS AT UNIT DEMISING ARE TO CENTERLINE OF WALLS
4. DIMENSIONS AT CMU ARE TO FACE OF CMU UNLESS OTHERWISE NOTED
5. DIMENSIONS AT CAST-IN-PLACE CONCRETE WALLS ARE TO FACE OF WALL UNLESS OTHERWISE NOTED
6. EXTEND ALL SHAFTS TO UNDERSIDE OF ROOF SHEATHING OR TOP OF ROOF PENETRATIONS WHERE APPLICABLE
7. NO PENETRATIONS OR OPENINGS ALLOWED IN SHAFT WALLS UNLESS THEY EXPRESSLY SERVE THE SHAFT
8. ALL RESIDENTIAL DEMISING WALLS AT METAL STUD LOCATIONS ARE TYPE K2, K3, K4A, K3, K4B, AND K5B 1HR FIRE RATING, WITH ACOUSTIC RATING
9. ALL RESIDENTIAL DEMISING WALLS AT WOOD STUD LOCATIONS ARE TYPE V3, V5, V6A, V6, V8A, AND V8B 1HR FIRE RATING, WITH ACOUSTIC RATING
10. ALL RESIDENTIAL CORRIDOR WALLS AT METAL STUD LOCATIONS ARE TYPE B6, 1 HR FIRE RATING, WITH ACOUSTIC RATING - UNLESS OTHERWISE NOTED
11. ALL RESIDENTIAL CORRIDOR WALLS AT WOOD STUD LOCATIONS ARE TYPE W6, 1 HR FIRE RATING, WITH ACOUSTIC RATING - UNLESS OTHERWISE NOTED
12. ALL UNITS ARE TYPE B ACCESSIBLE UNLESS OTHERWISE NOTED
13. MAINTAIN 8'-2" MIN. CLEAR HEIGHT AT PARKING AREAS INDICATED ON PLANS. ALL OTHER PARKING AREAS SHALL PROVIDE 7'-2" MIN. CLEAR HEIGHT
14. PROVIDE WALL BLOCKING AT KITCHEN WALLS AND ALL BATHROOM LOCATIONS INDICATED ON SHEET A1000

URBANWORKS

CONSULTANT

PRELIMINARY  
 NOT FOR CONSTRUCTION

SCHEMATIC DESIGN  
 10.11.2023

REVISIONS

DATE 10/11/2023  
 PROJECT # 23-001  
 PHASE SCHEMATIC DESIGN  
 DRAWN BY Author  
 CHECKED BY

LEVEL 1 PLAN - OVERALL

A101.0

SR - 700 American

700 W AMERICAN BLVD / BLOOMINGTON, MN

© URBANWORKS ARCHITECTURE LLC, 2023  
 901 NORTH THIRD STREET, SUITE 145, MINNEAPOLIS, MN 55401

Decks and balconies may require sprinkler protection depending on construction type, combustibility of exterior building materials and type of roof assembly.

Emergency responder radio coverage meeting the requirements of appendix P in the 2020 MSFC shall be provided throughout the property and within the structures.

Standpipes requirement in all stairwells and hose valves shall be located at the floor landing.

All emergency vehicle access lanes including all areas of the parking structure (top and lower levels) shall support a minimum 40 tons.

All exterior doors that allow access to the interior of the building(s) shall be numbered in a sequential order starting with the main entrance (public entrance) as number 1 and continue in a clockwise manner.

Fire alarm panel(s), annunciator panel(s) and Knox box locations to be determined by the Fire Prevention Division.

Building/property shall be adequately signed for emergency response.

Must meet 2020 MN State Building Code

Must meet 2020 MN Accessibility Code.

Building plans must be signed by a MN licensed architect.

SAC review by MET council will be required.

Provide a detailed code analysis with the plans.

Separate permit required for Parking Lot/Driveway.

Separate permit and review by MN State Elevator Inspector for elevators.

The new MN Energy Code will be adopted in January of 2024. This includes requirements for energy recovery units in each apartment unit. Call Building & Inspections for more information.

**GENERAL PLAN NOTES:**

- DIMENSIONS AT EXTERIOR WALLS ARE TO OUTSIDE FACE OF SHEATHING
- DIMENSIONS AT INTERIOR WALLS ARE TO FACE OF WALL UNLESS OTHERWISE NOTED
- DIMENSIONS AT UNIT DEMISING ARE TO CENTERLINE OF WALLS
- DIMENSIONS AT CMU ARE TO FACE OF CMU UNLESS OTHERWISE NOTED
- DIMENSIONS AT CAST-IN-PLACE CONCRETE WALLS ARE TO FACE OF WALL UNLESS OTHERWISE NOTED
- EXTEND ALL SHAFTS TO UNDERSIDE OF ROOF SHEATHING OR TOP OF ROOF PENETRATIONS WHERE APPLICABLE
- NO PENETRATIONS OR OPENINGS ALLOWED IN SHAFT WALLS UNLESS THEY EXPRESSLY SERVE THE SHAFT
- ALL RESIDENTIAL DEMISING WALLS AT METAL STUD LOCATIONS ARE TYPE K2, K3, K4A, K3, K4B, AND K5B 1HR FIRE RATING, WITH ACOUSTIC RATING
- ALL RESIDENTIAL DEMISING WALLS AT WOOD STUD LOCATIONS ARE TYPE V3, V4, V5A, V6, V6A, AND V8B 1HR FIRE RATING, WITH ACOUSTIC RATING
- ALL RESIDENTIAL CORRIDOR WALLS AT METAL STUD LOCATIONS ARE TYPE B6, 1 HR FIRE RATING, WITH ACOUSTIC RATING - UNLESS OTHERWISE NOTED
- ALL RESIDENTIAL CORRIDOR WALLS AT WOOD STUD LOCATIONS ARE TYPE W6, 1 HR FIRE RATING, WITH ACOUSTIC RATING - UNLESS OTHERWISE NOTED
- ALL UNITS ARE TYPE B ACCESSIBLE UNLESS OTHERWISE NOTED
- MAINTAIN 8'-2" MIN. CLEAR HEIGHT AT PARKING AREAS INDICATED ON PLANS. ALL OTHER PARKING AREAS SHALL PROVIDE 7'-2" MIN. CLEAR HEIGHT
- PROVIDE WALL BLOCKING AT KITCHEN WALLS AND ALL BATHROOM LOCATIONS INDICATED ON SHEET A1000

SR - 700 American

700 W AMERICAN BLVD. / BLOOMINGTON, MN

URBANWORKS

© URBANWORKS ARCHITECTURE LLC, 2023  
501 NORTH THIRD STREET, SUITE 145, MINNEAPOLIS, MN 55401

CONSULTANT

PRELIMINARY  
NOT FOR CONSTRUCTION

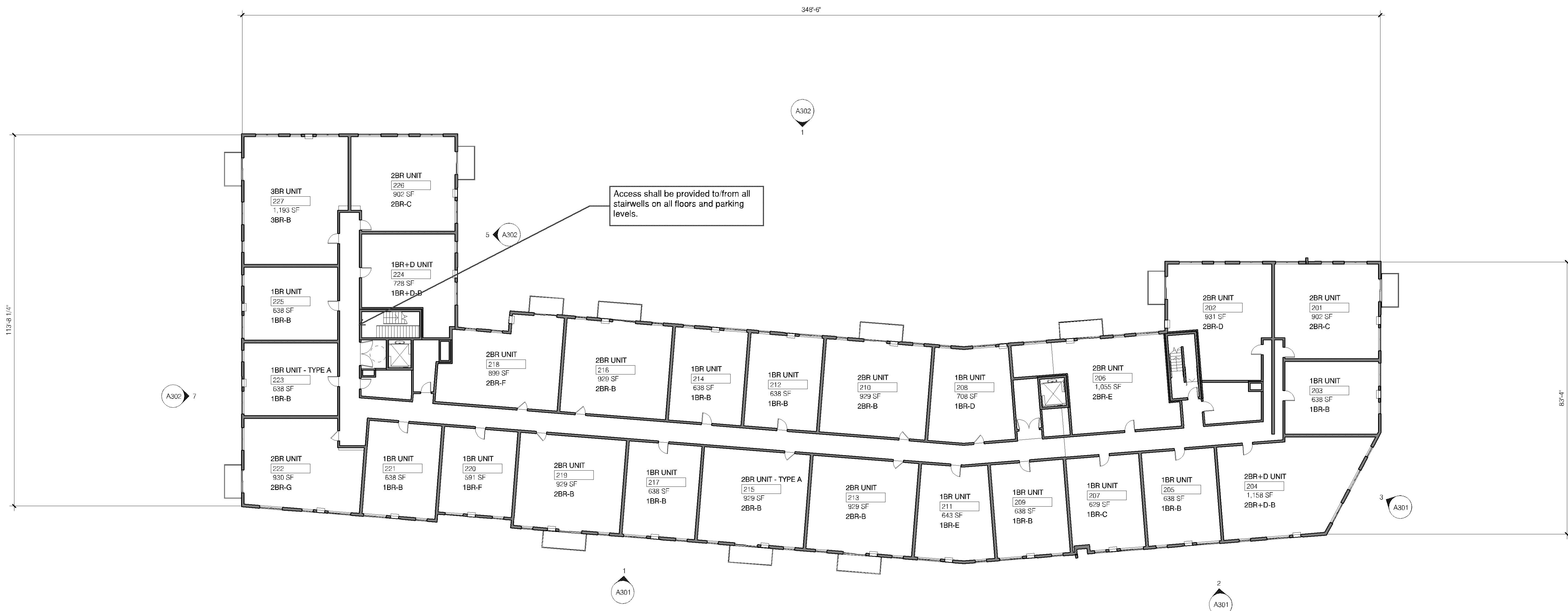
SCHEMATIC DESIGN  
10.11.2023

REVISIONS

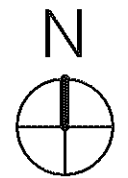
DATE 10/11/2023  
PROJECT # 23-0001  
PHASE SCHEMATIC DESIGN  
DRAWN BY Author  
CHECKED BY

LEVEL 2, 3, 4 & 5  
PLAN - OVERALL

A102.0



**1** A102.0 - LEVEL 2 PLAN - OVERALL  
A102.0 1/16" = 1'-0"





**2** Elevation - South Entry  
A301 3/22 1/4"



**1** Elevation - South Overall  
A301 3/22 1/4"



**3** Elevation - Southeast  
A301 3/22 1/4"



**4** Elevation - East Overall  
A301 3/22 1/4"

GENERAL EXTERIOR NOTES:

KEYNOTES:

- EB1 (1) NICKLED PASTE W/ER METAL FINISH - REFER TO ARCHITECT FOR FINAL COLOR SELECTION
- FB1 (1) PREFERRED FINISH - REFER TO ARCHITECT FOR FINAL COLOR SELECTION
- FB2 (1) PREFERRED FINISH - REFER TO ARCHITECT FOR FINAL COLOR SELECTION
- FB3 (1) PREFERRED FINISH - REFER TO ARCHITECT FOR FINAL COLOR SELECTION
- FB4 (1) PREFERRED FINISH - REFER TO ARCHITECT FOR FINAL COLOR SELECTION
- FB5 (1) PREFERRED FINISH - REFER TO ARCHITECT FOR FINAL COLOR SELECTION
- FB6 (1) PREFERRED FINISH - REFER TO ARCHITECT FOR FINAL COLOR SELECTION
- FB7 (1) PREFERRED FINISH - REFER TO ARCHITECT FOR FINAL COLOR SELECTION
- FB8 (1) PREFERRED FINISH - REFER TO ARCHITECT FOR FINAL COLOR SELECTION
- FB9 (1) PREFERRED FINISH - REFER TO ARCHITECT FOR FINAL COLOR SELECTION
- FB10 (1) PREFERRED FINISH - REFER TO ARCHITECT FOR FINAL COLOR SELECTION
- FB11 (1) PREFERRED FINISH - REFER TO ARCHITECT FOR FINAL COLOR SELECTION
- FB12 (1) PREFERRED FINISH - REFER TO ARCHITECT FOR FINAL COLOR SELECTION
- FB13 (1) PREFERRED FINISH - REFER TO ARCHITECT FOR FINAL COLOR SELECTION
- FB14 (1) PREFERRED FINISH - REFER TO ARCHITECT FOR FINAL COLOR SELECTION
- FB15 (1) PREFERRED FINISH - REFER TO ARCHITECT FOR FINAL COLOR SELECTION
- FB16 (1) PREFERRED FINISH - REFER TO ARCHITECT FOR FINAL COLOR SELECTION
- FB17 (1) PREFERRED FINISH - REFER TO ARCHITECT FOR FINAL COLOR SELECTION
- FB18 (1) PREFERRED FINISH - REFER TO ARCHITECT FOR FINAL COLOR SELECTION
- FB19 (1) PREFERRED FINISH - REFER TO ARCHITECT FOR FINAL COLOR SELECTION
- FB20 (1) PREFERRED FINISH - REFER TO ARCHITECT FOR FINAL COLOR SELECTION



**1** Elevation - North Overall  
A322 3/32 - 1/1'



**2** Elevation - Courtyard East  
A322 3/32 - 1/1'



**3** Elevation - Courtyard Southeast  
A322 3/32 - 1/1'



**4** Elevation - Courtyard SW  
A322 3/32 - 1/1'



**6** Elevation - West Courtyard Recess  
A322 3/32 - 1/1'



**5** Elevation - Courtyard West  
A322 3/32 - 1/1'



**7** Elevation - West  
A322 3/32 - 1/1'

**GENERAL EXTERIOR NOTES:**

**KEYNOTES:**

- E1: COLORED POLYESTER METAL SIDING - REFER TO A-21 (R) FOR FINAL COLOR SELECTION
- E2: REFER TO A-21 (R) FOR FINAL COLOR SELECTION
- E3: REFER TO A-21 (R) FOR FINAL COLOR SELECTION
- E4: REFER TO A-21 (R) FOR FINAL COLOR SELECTION
- E5: REFER TO A-21 (R) FOR FINAL COLOR SELECTION
- E6: REFER TO A-21 (R) FOR FINAL COLOR SELECTION
- E7: REFER TO A-21 (R) FOR FINAL COLOR SELECTION
- E8: REFER TO A-21 (R) FOR FINAL COLOR SELECTION
- E9: REFER TO A-21 (R) FOR FINAL COLOR SELECTION
- E10: REFER TO A-21 (R) FOR FINAL COLOR SELECTION
- E11: REFER TO A-21 (R) FOR FINAL COLOR SELECTION
- E12: REFER TO A-21 (R) FOR FINAL COLOR SELECTION
- E13: REFER TO A-21 (R) FOR FINAL COLOR SELECTION
- E14: REFER TO A-21 (R) FOR FINAL COLOR SELECTION
- E15: REFER TO A-21 (R) FOR FINAL COLOR SELECTION
- E16: REFER TO A-21 (R) FOR FINAL COLOR SELECTION
- E17: REFER TO A-21 (R) FOR FINAL COLOR SELECTION
- E18: REFER TO A-21 (R) FOR FINAL COLOR SELECTION
- E19: REFER TO A-21 (R) FOR FINAL COLOR SELECTION
- E20: REFER TO A-21 (R) FOR FINAL COLOR SELECTION
- E21: REFER TO A-21 (R) FOR FINAL COLOR SELECTION
- E22: REFER TO A-21 (R) FOR FINAL COLOR SELECTION
- E23: REFER TO A-21 (R) FOR FINAL COLOR SELECTION
- E24: REFER TO A-21 (R) FOR FINAL COLOR SELECTION
- E25: REFER TO A-21 (R) FOR FINAL COLOR SELECTION
- E26: REFER TO A-21 (R) FOR FINAL COLOR SELECTION
- E27: REFER TO A-21 (R) FOR FINAL COLOR SELECTION
- E28: REFER TO A-21 (R) FOR FINAL COLOR SELECTION
- E29: REFER TO A-21 (R) FOR FINAL COLOR SELECTION
- E30: REFER TO A-21 (R) FOR FINAL COLOR SELECTION
- E31: REFER TO A-21 (R) FOR FINAL COLOR SELECTION
- E32: REFER TO A-21 (R) FOR FINAL COLOR SELECTION
- E33: REFER TO A-21 (R) FOR FINAL COLOR SELECTION
- E34: REFER TO A-21 (R) FOR FINAL COLOR SELECTION
- E35: REFER TO A-21 (R) FOR FINAL COLOR SELECTION
- E36: REFER TO A-21 (R) FOR FINAL COLOR SELECTION
- E37: REFER TO A-21 (R) FOR FINAL COLOR SELECTION
- E38: REFER TO A-21 (R) FOR FINAL COLOR SELECTION
- E39: REFER TO A-21 (R) FOR FINAL COLOR SELECTION
- E40: REFER TO A-21 (R) FOR FINAL COLOR SELECTION
- E41: REFER TO A-21 (R) FOR FINAL COLOR SELECTION
- E42: REFER TO A-21 (R) FOR FINAL COLOR SELECTION
- E43: REFER TO A-21 (R) FOR FINAL COLOR SELECTION
- E44: REFER TO A-21 (R) FOR FINAL COLOR SELECTION
- E45: REFER TO A-21 (R) FOR FINAL COLOR SELECTION
- E46: REFER TO A-21 (R) FOR FINAL COLOR SELECTION
- E47: REFER TO A-21 (R) FOR FINAL COLOR SELECTION
- E48: REFER TO A-21 (R) FOR FINAL COLOR SELECTION
- E49: REFER TO A-21 (R) FOR FINAL COLOR SELECTION
- E50: REFER TO A-21 (R) FOR FINAL COLOR SELECTION
- E51: REFER TO A-21 (R) FOR FINAL COLOR SELECTION
- E52: REFER TO A-21 (R) FOR FINAL COLOR SELECTION
- E53: REFER TO A-21 (R) FOR FINAL COLOR SELECTION
- E54: REFER TO A-21 (R) FOR FINAL COLOR SELECTION
- E55: REFER TO A-21 (R) FOR FINAL COLOR SELECTION
- E56: REFER TO A-21 (R) FOR FINAL COLOR SELECTION
- E57: REFER TO A-21 (R) FOR FINAL COLOR SELECTION
- E58: REFER TO A-21 (R) FOR FINAL COLOR SELECTION
- E59: REFER TO A-21 (R) FOR FINAL COLOR SELECTION
- E60: REFER TO A-21 (R) FOR FINAL COLOR SELECTION
- E61: REFER TO A-21 (R) FOR FINAL COLOR SELECTION
- E62: REFER TO A-21 (R) FOR FINAL COLOR SELECTION
- E63: REFER TO A-21 (R) FOR FINAL COLOR SELECTION
- E64: REFER TO A-21 (R) FOR FINAL COLOR SELECTION
- E65: REFER TO A-21 (R) FOR FINAL COLOR SELECTION
- E66: REFER TO A-21 (R) FOR FINAL COLOR SELECTION
- E67: REFER TO A-21 (R) FOR FINAL COLOR SELECTION
- E68: REFER TO A-21 (R) FOR FINAL COLOR SELECTION
- E69: REFER TO A-21 (R) FOR FINAL COLOR SELECTION
- E70: REFER TO A-21 (R) FOR FINAL COLOR SELECTION
- E71: REFER TO A-21 (R) FOR FINAL COLOR SELECTION
- E72: REFER TO A-21 (R) FOR FINAL COLOR SELECTION
- E73: REFER TO A-21 (R) FOR FINAL COLOR SELECTION
- E74: REFER TO A-21 (R) FOR FINAL COLOR SELECTION
- E75: REFER TO A-21 (R) FOR FINAL COLOR SELECTION
- E76: REFER TO A-21 (R) FOR FINAL COLOR SELECTION
- E77: REFER TO A-21 (R) FOR FINAL COLOR SELECTION
- E78: REFER TO A-21 (R) FOR FINAL COLOR SELECTION
- E79: REFER TO A-21 (R) FOR FINAL COLOR SELECTION
- E80: REFER TO A-21 (R) FOR FINAL COLOR SELECTION
- E81: REFER TO A-21 (R) FOR FINAL COLOR SELECTION
- E82: REFER TO A-21 (R) FOR FINAL COLOR SELECTION
- E83: REFER TO A-21 (R) FOR FINAL COLOR SELECTION
- E84: REFER TO A-21 (R) FOR FINAL COLOR SELECTION
- E85: REFER TO A-21 (R) FOR FINAL COLOR SELECTION
- E86: REFER TO A-21 (R) FOR FINAL COLOR SELECTION
- E87: REFER TO A-21 (R) FOR FINAL COLOR SELECTION
- E88: REFER TO A-21 (R) FOR FINAL COLOR SELECTION
- E89: REFER TO A-21 (R) FOR FINAL COLOR SELECTION
- E90: REFER TO A-21 (R) FOR FINAL COLOR SELECTION
- E91: REFER TO A-21 (R) FOR FINAL COLOR SELECTION
- E92: REFER TO A-21 (R) FOR FINAL COLOR SELECTION
- E93: REFER TO A-21 (R) FOR FINAL COLOR SELECTION
- E94: REFER TO A-21 (R) FOR FINAL COLOR SELECTION
- E95: REFER TO A-21 (R) FOR FINAL COLOR SELECTION
- E96: REFER TO A-21 (R) FOR FINAL COLOR SELECTION
- E97: REFER TO A-21 (R) FOR FINAL COLOR SELECTION
- E98: REFER TO A-21 (R) FOR FINAL COLOR SELECTION
- E99: REFER TO A-21 (R) FOR FINAL COLOR SELECTION
- E100: REFER TO A-21 (R) FOR FINAL COLOR SELECTION

SR - 700 American  
700 W AMERICAN BLVD / BLOOMINGTON, MN

URBANWORKS

CONSULTANT

PRELIMINARY  
NOT FOR CONSTRUCTION

SCHEMATIC DESIGN  
10.11.2023

REVISIONS

DATE: 10/11/2023  
PROJECT #: 23-000  
PHASE: SCHEMATIC DESIGN  
DRAWN BY: SA  
CHECKED BY:

BUILDING ELEVATIONS



PERSPECTIVE VIEW FROM SOUTHEAST (LYNDALE/AMERICAN INTERSECTION)

SR - 700 American  
700 W AMERICAN BLVD / BLOOMINGTON, MN

URBANWORKS

URBANWORKS ARCHITECTURE, LLC 2023  
501 NORTH THIRD STREET, SUITE 146, MINNEAPOLIS, MN 55401

CONSULTANT

PRELIMINARY  
NOT FOR  
CONSTRUCTION

SCHEMATIC DESIGN  
10.11.2023

REVISIONS

DATE 10/11/2023  
PROJECT # A22-000  
PHASE SCHEMATIC DESIGN  
DRAWN BY SA  
CHECKED BY

BUILDING  
PERSPECTIVE  
VIEWS