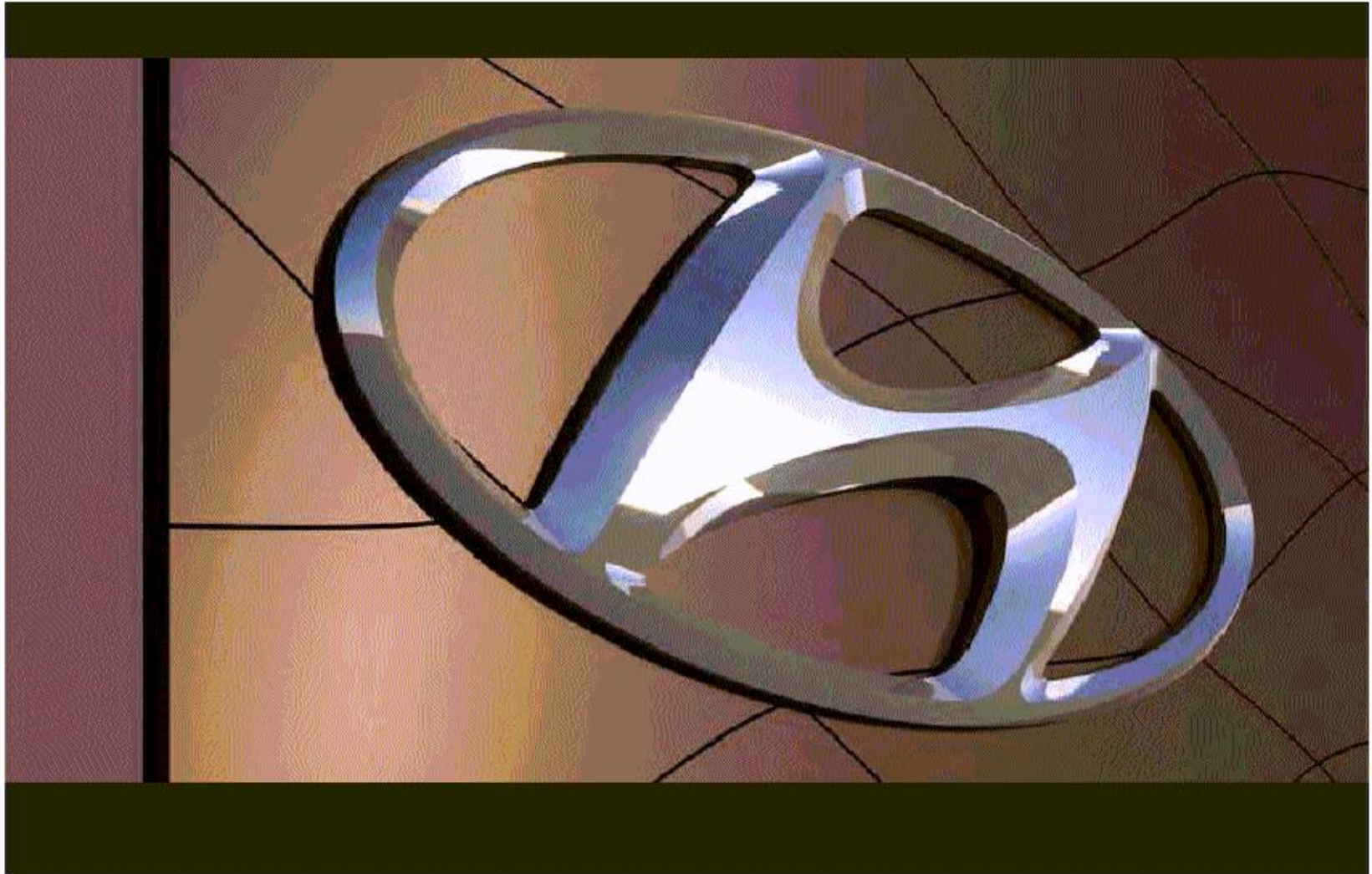




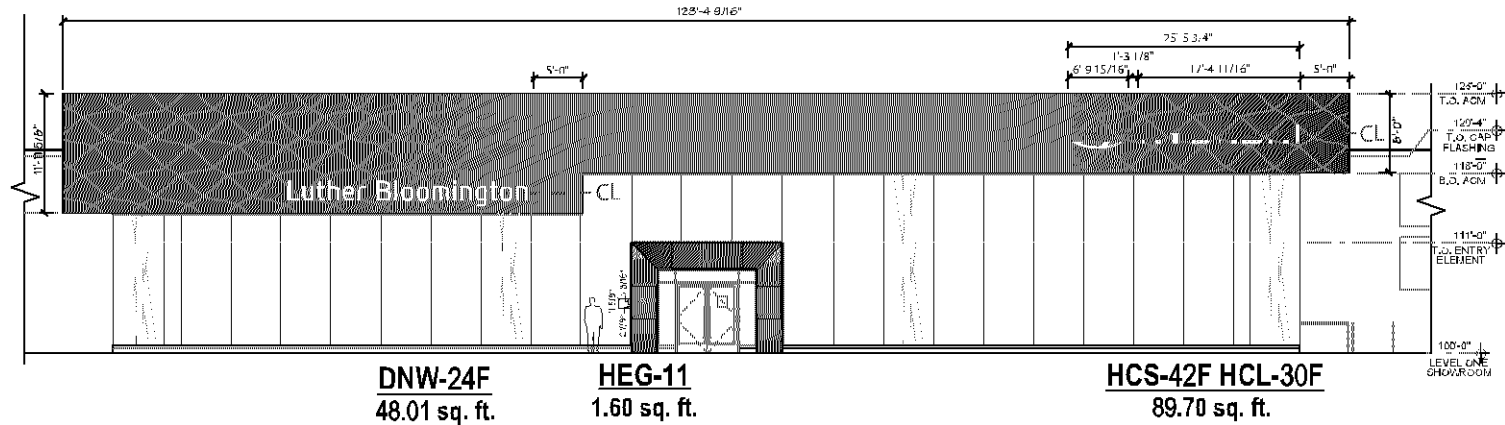
MN021 Luther Bloomington Hyundai



Wall Signs

Art represents an approximation of sign and aluminum composite material (ACM) panel appearance.
 Dealer to provide 120 volt, 20 amp dedicated circuit to each sign. Larger sets may require additional circuits.
 Dealer to provide behind-the-wall access for installation and structural support for signs.
 Dealer is responsible for covering signage mounting/wires/transformers if they are visible on the inside of the building.
 If an engineer alters quoted signage a change order will be provided to the dealer.
 Please refer to AGI's Architectural Imaging's ACM proposal for details on that separate scope of work (e.g., entry element logo/letters are included on the ACM quote).
 Copy on and placement of signs to be verified by dealer.
 Proposal assumes the completed building will require a field survey to determine if any signage modifications are necessary. A change order will be provided if necessary.
 Dealer to supply notes above to GC, architect, and other construction team members.

Rendering based on AGI post-75% architectural design drawings, received 05/10/2023. Dealer is responsible for verifying that this brandbook matches final architectural plans.



FRONT (NORTH) ELEVATION



MN021 Luther Bloomington Hyundai
 4801 American Blvd. W.
 Minneapolis, MN 55437

CAM: Francque Scamardo
 AGI Rep: NSA / P Petkov
 Drawn By: N/A

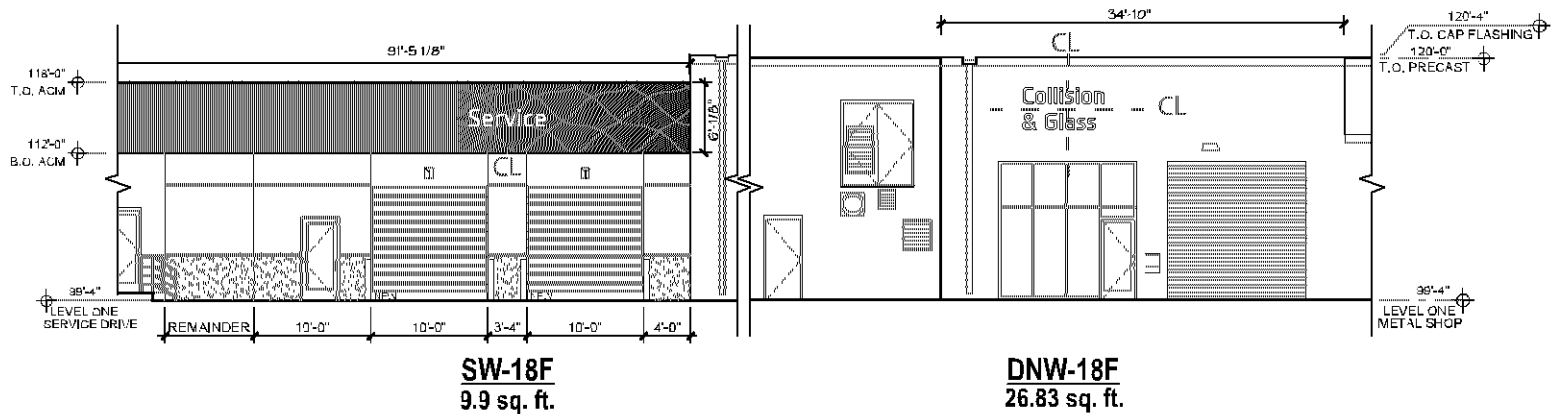
Scale: 3/32" = 1' - 0"
 Date: 08/15/2023



Wall Signs

Art represents an approximation of sign and aluminum composite material (ACM) panel appearance.
 Dealer to provide 120 volt, 20 amp dedicated circuit to each sign. Larger sets may require additional circuits.
 Dealer to provide behind-the-wall access for installation and structural support for signs.
 Dealer is responsible for covering signage mounting/wires/transformers if they are visible on the inside of the building.
 If an engineer alters quoted signage a change order will be provided to the dealer.
 Please refer to AGI's Architectural Imaging's ACM proposal for details on that separate scope of work (e.g., entry element logo/letters are included on the ACM quote).
 Copy on and placement of signs to be verified by dealer.
 Proposal assumes the completed building will require a field survey to determine if any signage modifications are necessary. A change order will be provided if necessary.
 Dealer to supply notes above to GC, architect, and other construction team members.

Rendering based on AGI post-75% architectural design drawings, received 05/10/2023. Dealer is responsible for verifying that this brandbook matches final architectural plans.



SIDE (WEST) ELEVATION



MND21 Luther Bloomington Hyundai
 4801 American Blvd. W.
 Minneapolis, MN 55437

CAM: Francque Scamardo

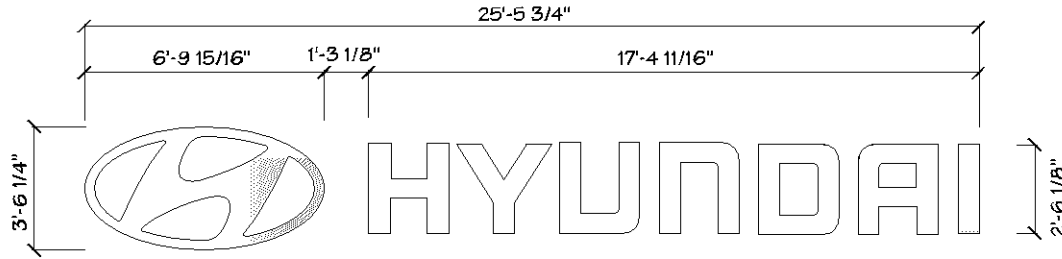
AGI Rep: NSA / P Petkov

Drawn By: N/A

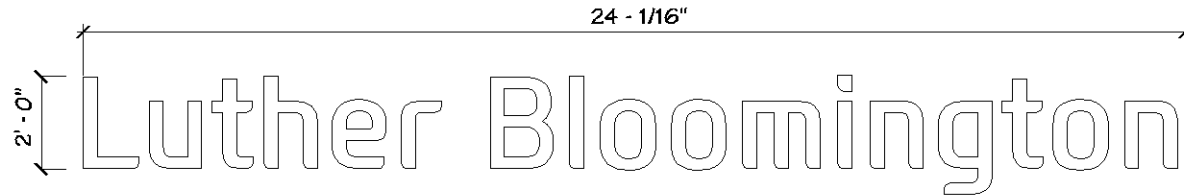
Scale: 3/32" = 1' - 0"

Date: 08/15/2023

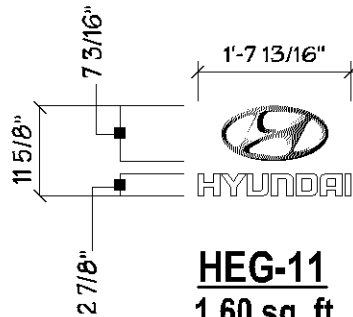




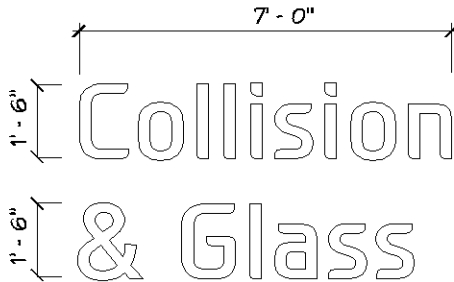
HCS-42F HCL-30F
89.70 sq. ft.



DNW-24F
48.01 sq. ft.



HEG-11
1.60 sq. ft.
(Symbol & Logo)



DNW-18F
26.83 sq. ft.



SW-18F
9.9 sq. ft.



MND21 Luther Bloomington Hyundai
4801 American Blvd. W.
Minneapolis, MN 55437

CAM: Francque Scamardo
AGI Rep: NSA / P Petkov
Drawn By: N/A

Scale: NTS
Date: 08/15/2023



Ground Signs

Art represents approximation of sign appearance.

Ground sign to be installed on new foundation.

Exact location of sign to be determined. Final location of sign subject to municipality approval.

Ground sign recommendation/pricing assumes installation in earth, without obstructions, on level grade. Dealer to locate private utilities, and identify location.

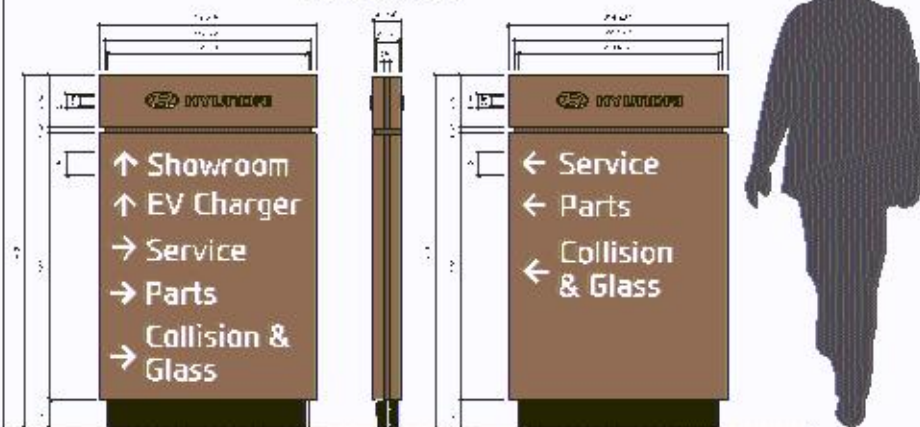
Attempt to install ground sign on existing foundation, this requires a survey to confirm adaptability, approval by an engineer(s), and municipality. Dealer to provide 120-volt, 20-amp dedicated circuit to sign. If an engineer alters quoted signage a change order will be provided to the dealer.

Copy art and placement of any signs, including directional signs, to be verified by dealer.

Dealer to supply above to GC, architect, and other construction team members.

Wind ASCE 7-16 Category II - 109 mph, Miles - 1,329, Zone - 1

Double-Sided



GDSI-DIR-48-HWL

9.79 sq.ft.

Directional 1

Single-Sided



GDSI-DIR-48-HWL

9.79 sq. ft

Directional 2

Single-Sided



GDSI-DIR-48-HWL

9.79 sq. ft

Directional 3



MAKER's Other location Hyundai
4865 American Blvd. W.
Minneapolis, MN 55437

CAM: Franco Scamardo

AGI Rep: NSA / P Putkov

Drawn By: N/A

Scale: NTS

Date: 08/15/2023



Ground Signs

Art represents approximation of sign appearance.

Ground sign to be installed on new foundation.

Exact location of sign to be determined. Final location of sign subject to municipality approval.

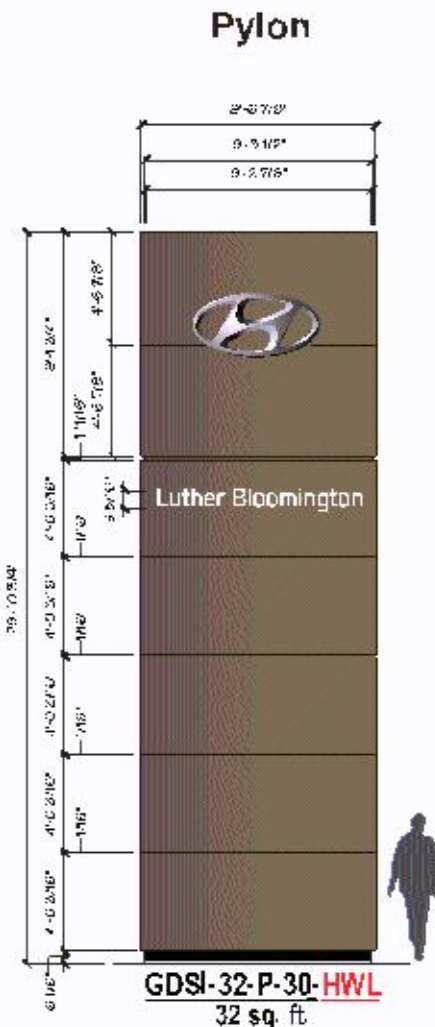
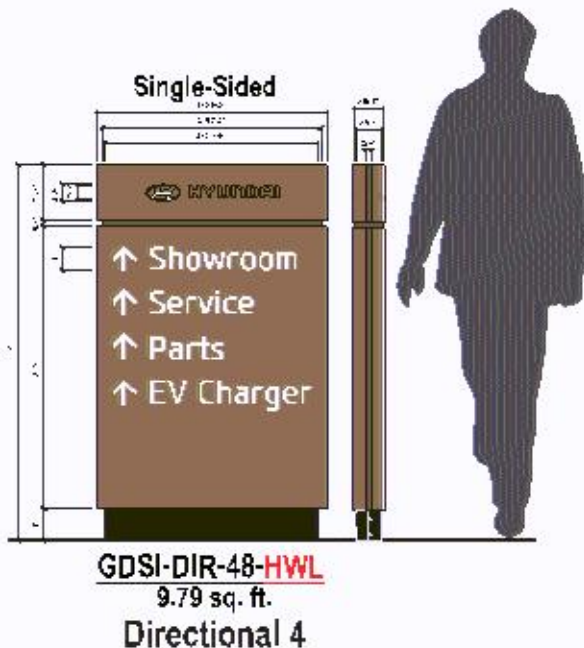
Ground sign recommendation/pricing assumes installation in earth, without obstructions, on level grade. Dealer to locate private utilities, and identify location.

Attempt to install ground sign on existing foundation, this requires a survey to confirm adaptability, approval by an engineer(s), and municipality. Dealer to provide 120-volt, 20-amp dedicated circuit to sign. If an engineer alters quoted signage a change order will be provided to the dealer.

Copy art and placement of any signs, including directional signs, to be verified by dealer.

Dealer to supply above to GC, architect, and other construction team members.

Wind ASCE 7-16 Category II - 109 mph, Miles - 1,329, Zone - 1



Exact location of sign to be determined.



MARKET Luther Bloomington Hyundai
4263 American Blvd. W.
Minneapolis, MN 55431

CAM: Franco Scamardo
AGI Rep: NSA / P Putkov
Drawn By: N/A

Scale: NTS
Date: 08/15/2023



Rendering based on AGI post-75% architectural design drawings, received 05/10/2023. Dealer is responsible for verifying that this brandbook matches final architectural plans.

Ground sign to be installed on new foundation.

Exact location of sign to be determined. Final location of sign subject to municipality approval.

Ground sign recommendation/pricing assumes installation without obstructions, on level grade.

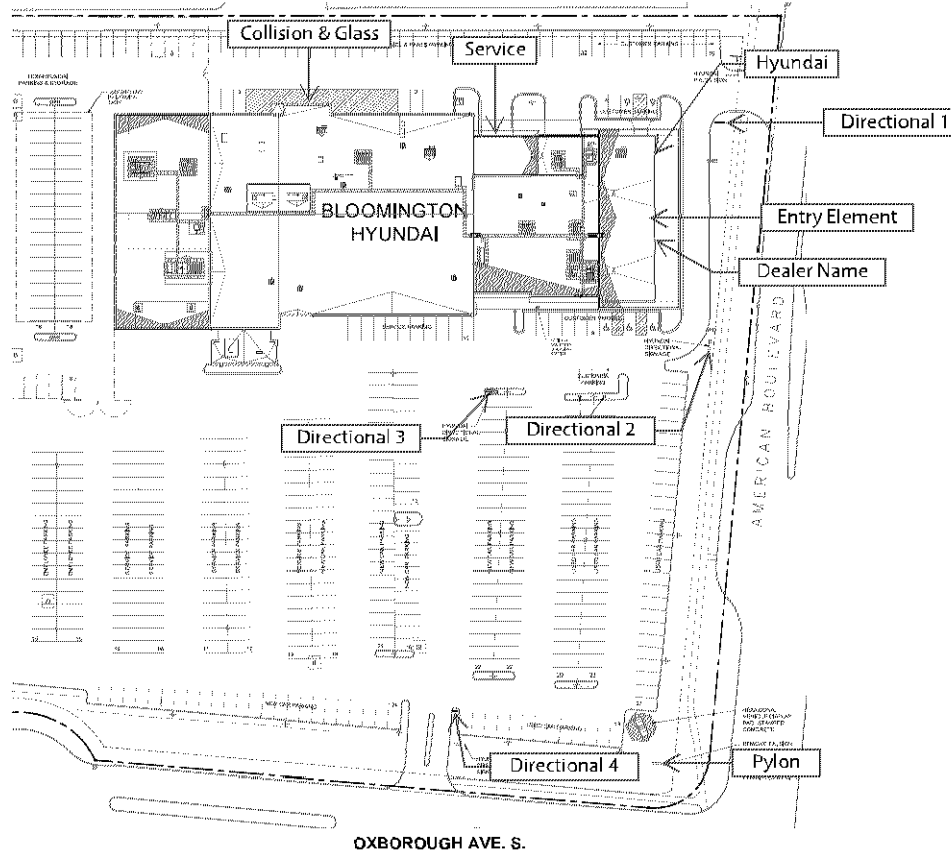
Attempt to install ground sign on existing foundation, this requires a survey to confirm adaptability, approval by an engineer(s), and municipality.

Dealer to provide 120 volt, 20 amp dedicated circuit to signage.

If an engineer alters quoted signage a change order will be provided to the dealer.

Copy on and placement of any directional signs to be verified by dealer.

Dealer to supply above to GC, architect, and other construction team members.



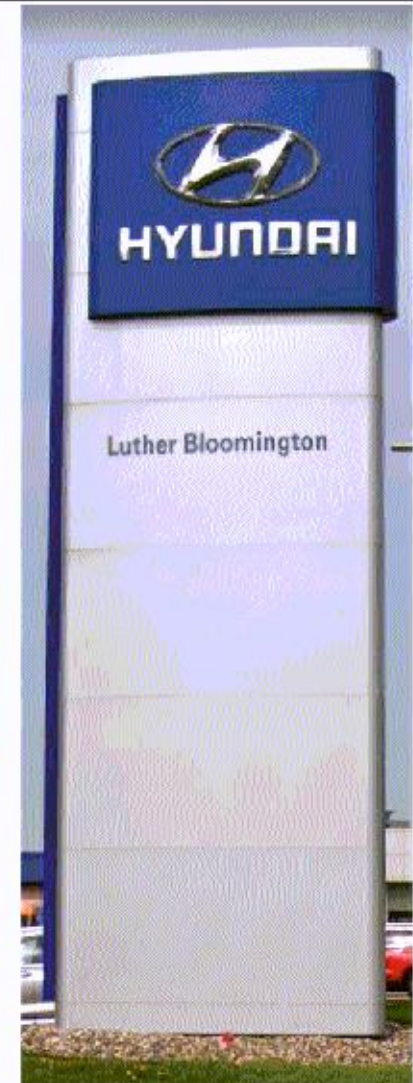
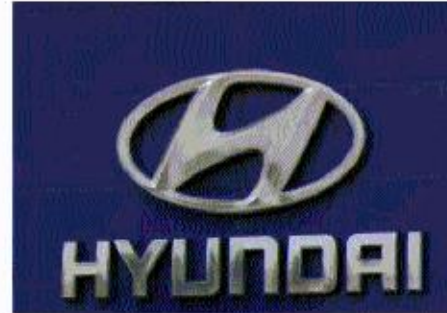
MND21 Luther Bloomington Hyundai
 4801 American Blvd. W.
 Minneapolis, MN 55437

CAM:	Francque Scamardo
AGI Rep:	NSA / P Petkov
Drawn By:	N/A
Scale:	NTS
Date:	08/15/2023



Removals by AGI:

- Remove Hyundai Logo & Letters
- Remove Dealer Name Letters
- Remove Service Logo & Letters
- Remove "Service Entrance" Wall Cabinet
- Remove "Parts & Service" Wall Cabinet
- Remove HP-72-30 Pylon
- Remove Directionals (3)
- Remove GSP Gateway Entry Element



MARKET Luther Bloomington Hyundai
 4265 American Blvd. W.
 Minneapolis, MN 55431

CAM: Franco Scamardo
 AGI Rep: NSA / P Putkov
 Drawn By: N/A

Scale: NTS
 Date: 08/15/2023



Removals by Dealer:

- Remove Blue Box
- Remove "Collision & Glass" Wall Sign
- Remove "Collision & Glass" Ground Sign



MARKET Luther Collision & Glass
 4267 American Blvd. W.
 Minneapolis, MN 55431

CAM: Franquo Scamardo
 AGI Rep: NSA / P Putkov
 Drawn By: N/A

Scale: NTS
 Date: 08/15/2023

