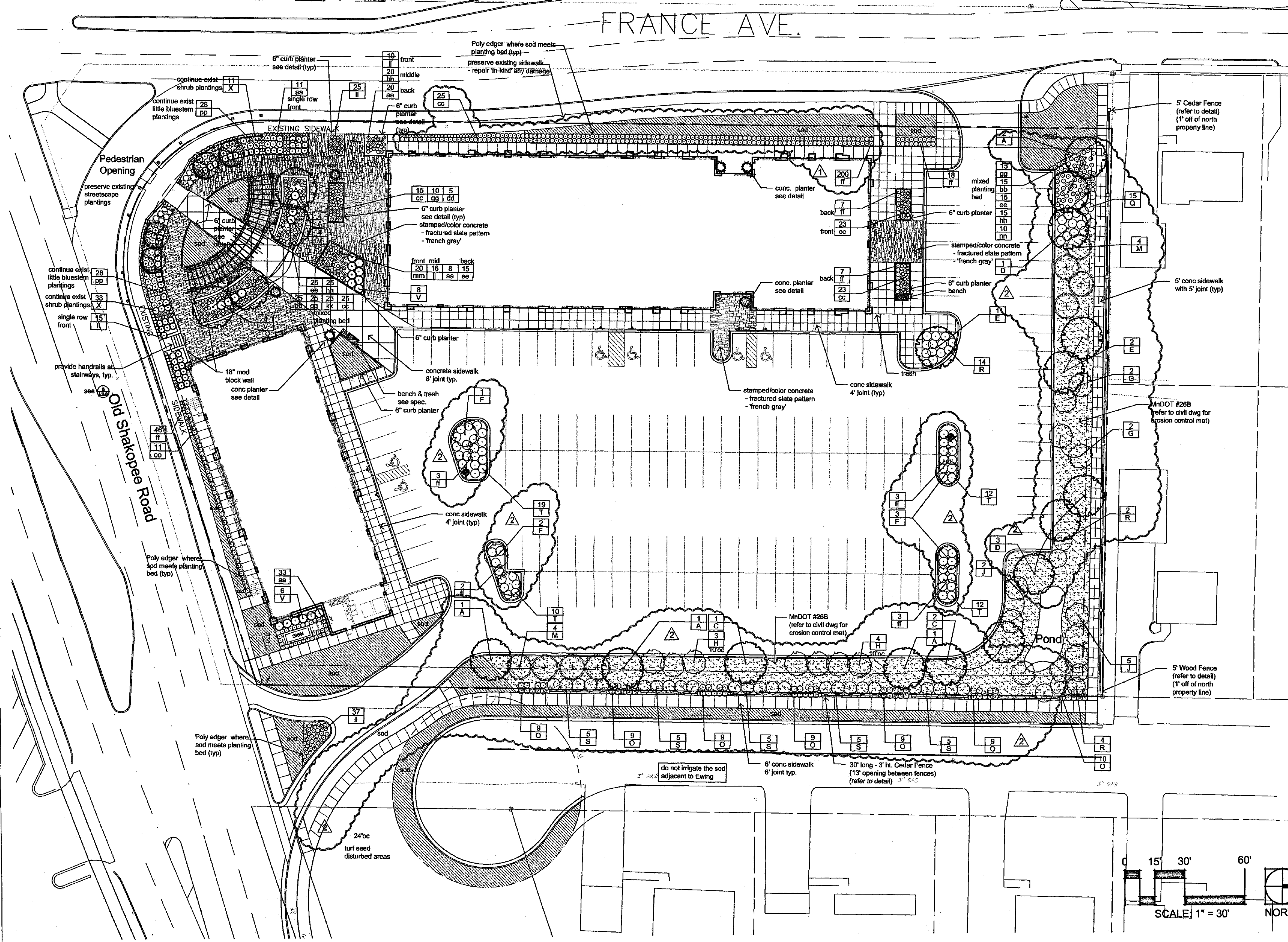
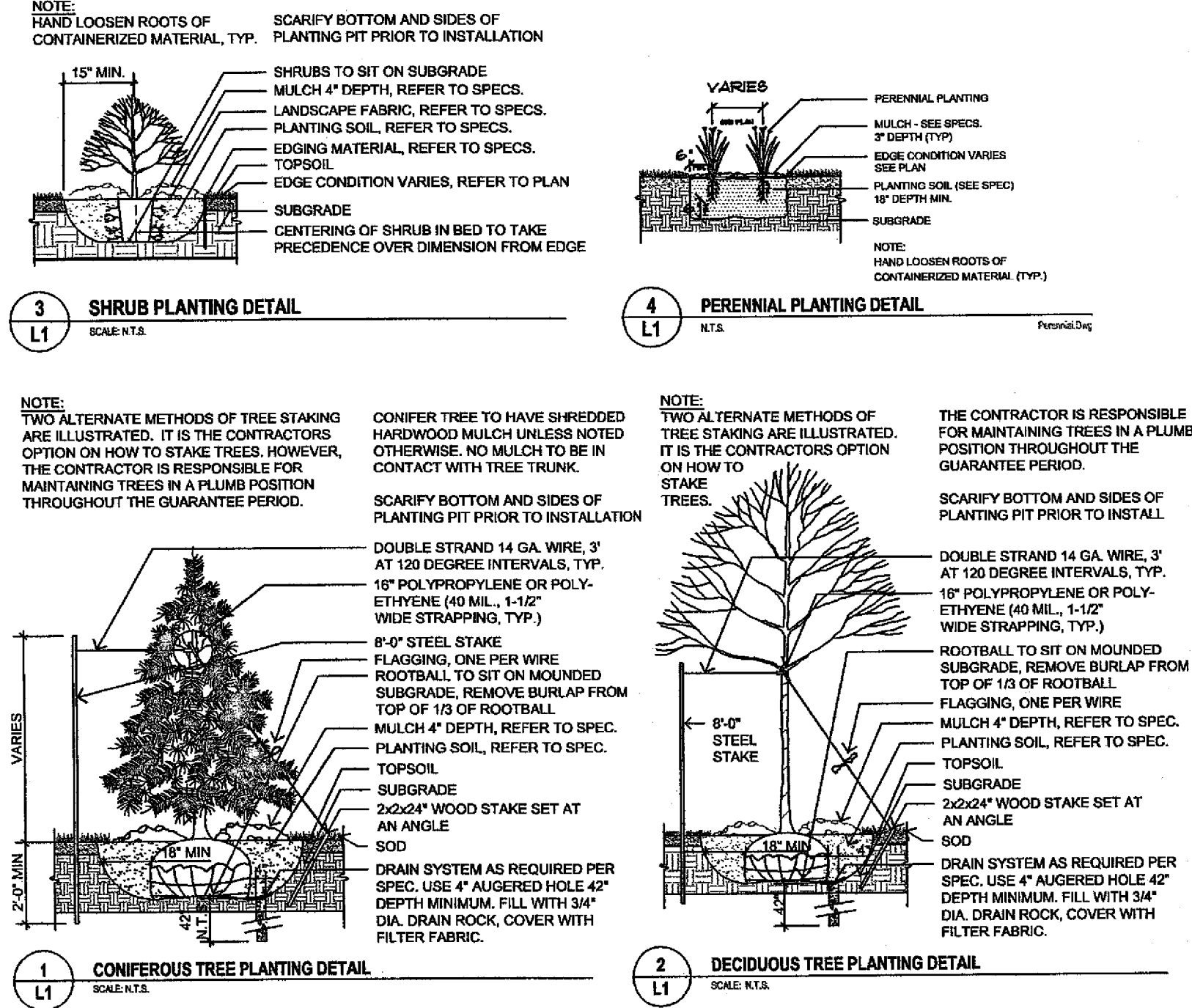


LANDSCAPE PLAN



PLANTING DETAILS



PLANTING SCHEDULE

QTY	SYM	COMMON NAME	SCIENTIFIC NAME	Size/Type	COMMENTS
<b>DECIDUOUS TREES</b>					
9	A	LINDEN GREENSPIRE	Tilia cordata 'Greenspire'	2.5' Cal. B&B	ONE LEADER
3	C	ROYAL FROST BIRCH	Betula sezezuhanica 'Royal Frost'	8' HT. B&B	CLUMP
4	D	EMERALD LUSTRE MAPLE	Acer platanoides 'Pond'	2.5' Cal. B&B	ONE LEADER
3	E	AUTUMN BLAZE MAPLE	Acer x freemanii 'Jefferson'	2.5' Cal. B&B	ONE LEADER
<b>ORNAMENTAL TREES</b>					
6	F	SPRING SNOW CRABAPPLE	Malus 'Spring Snow'	1.5' Cal. B&B	ONE LEADER
4	G	SELECTION BERRY	Amelanchier x grandiflora 'Autumn Brilliance'	1.5' Cal. B&B	ONE LEADER
7	H	AMUR MAACKI	Maackia amurensis	1.5' Cal. B&B	ONE LEADER
1	I	PAGODA DOGWOOD	Cornus alterniflora	1.5' Cal. B&B	ONE LEADER
7	J	RIVER BIRCH	Betula nigra	1.5' Cal. B&B	ONE LEADER
<b>EVERGREEN SHRUBS/TREES</b>					
1	L	SCOTCH PINE	Pinus sylvestris	8' HT. B&B	FULL FORM
8	M	NORWAY PINE	Pinus resinosa	8' HT. B&B	FULL FORM
1	N	TECHNY ARBORVITAE	Thuja occidentalis 'Techny'	8' HT. B&B	FULL FORM
<b>DECIDUOUS SHRUBS</b>					
64	O	ANTHONY WATERER SPIREA	Spiraea japonica 'Anthony Waterer'	#2 Cont.	3'-0" oc
1	P	COMPACT AMERICAN VIBURNUM	Viburnum trilobum 'Bailey Compact'	#5	Cont. 4'-6" oc
15	Q	CHOKERRY, AUTUMN MAGIC	Aronia melanocarpa 'A.M.'	#5	Cont. 3'-6" oc
20	R	SCOTCH SUMAC	Rhus glabra	#5	Cont. 2'-0" oc
25	S	ISANTH DOGWOOD	Cornus sericea 'Isant'	#5	Cont. 5'-0" oc
53	T	BUTTERFLY BUSH HONEYBUCKLE	Diervilla sessilifolia 'Butterfly'	#5	Cont. 3'-0" oc
<b>EVERGREEN SHRUBS</b>					
22	V	JUNIPER, MINT JULEP	Juniperus chinensis 'Monip'	#5	Cont. 4'-0" oc
44	X	SCANDIA JUNIPER	Juniper horizontalis 'Scandia'	#5	Cont. 4'-0" oc
<b>PERENNIALS &amp; ORNAMENTAL GRASSES</b>					
72	aa	HEAVY METAL SWITCH GRASS	Panicum virgatum 'Heavy Metal'	#3	Cont. 2'-0" oc
40	bb	GRASS, BLUE OATS	Helictotrichon sempervirens 'Sapphire'	#1	Cont. 2'-0" oc
111	cc	CAMMINT, WALKER'S LOW	Nepeta x faassenii x 'Walker's Low'	#1	Cont. 2'-0" oc
5	dd	SEDUM, AUTUMN JOY	Sedum x 'Autumn Joy'	#1	Cont. 1'-6" oc
55	ee	GOLDSTURM BLACK EYE SUSAN	Rudbeckia 'Goldsturm'	#1	Cont. 1'-6" oc
289	ff	GRASS, KARL FOERSTER	Calamagrostis x acutiflora 'Karl Foerster'	#3	Cont. 2'-0" oc
50	gg	KOBYLD LILY	Lilium spicata 'Kobold'	#1	Cont. 1'-6" oc
60	hh	PURPLE CONEFLOWER	Echinacea purpurea	#1	Cont. 1'-6" oc
1	ii	YUCCA	Yucca filamentosa 'Ivory Tower'	#1	Cont. 2'-6" oc
26	jj	SALVIA, MAY NIGHT	Salvia x superba 'Mairnacht'	#1	Cont. 1'-6" oc
25	kk	MOONBEAM COREOPSIS	Coreopsis verticillata 'Zagreb'	#1	Cont. 1'-6" oc
77	ll	PARDON ME DAYLILY	Hemerocallis 'Pardon Me'	#1	Cont. 2'-0" oc
20	mm	PRAIRIE DROPSIDE	Sporobolus heterolepis	#1	Cont. 2'-0" oc
10	nn	RUSSIAN SAGE	Perovskia 'Little Spire'	#1	Cont. 2'-6" oc
11	oo	STELLA D'ORO DAYLILY	Hemerocallis 'Stella D'oro'	#1	Cont. 1'-6" oc
58	pp	WHITE CONEFLOWER	Echinacea purpurea 'White Swan'	#1	Cont. 1'-6" oc

KEY:

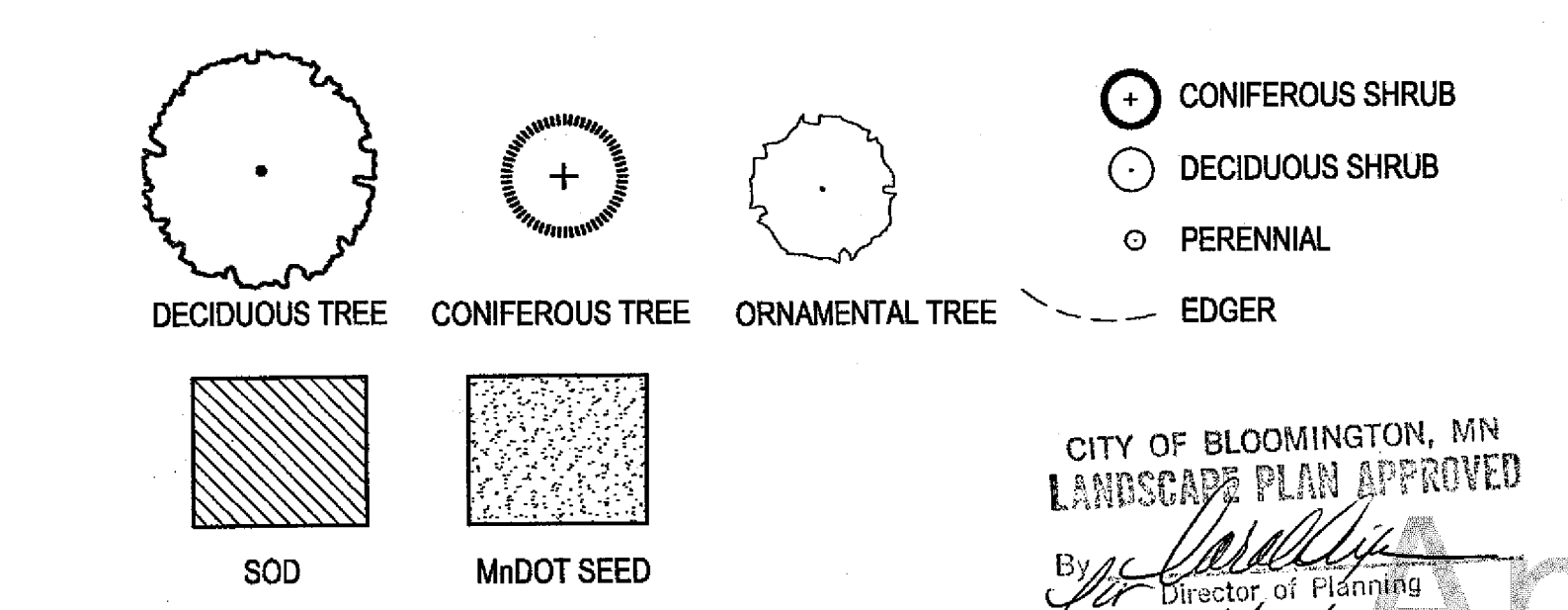
- PLANT MATERIAL SHALL BE FERTILIZED UPON INSTALLATION WITH BRIDGEMAN MEAL... OTHER APPROVED FERTILIZER MIXED IN WITH THE PLANTING SOIL PER THE MANUFACTURER'S INSTRUCTIONS OR MAY BE TREATED FOR BURNER AND FALL INSTALLATION WITH AN APPLICATION OF GRANULAR 0-30-20 OF 12 OZ PER 2.5' CALIPER TREE AND 4 OZ PER SHRUB WITH AN ADDITIONAL APPLICATION OF 10-10-10 THE FOLLOWING SPRING IN THE TREE SAUCER.
- SOIL AREAS TO RECEIVE MINIMUM OF 6" TOPSOIL.
- PLANTING AREAS RECEIVING GROUND COVER, PERENNIALS, ANNUALS, AND/OR VINES SHALL RECEIVE A MINIMUM OF 1" DEPTH OF PLANTING SOIL CONSISTING OF AT LEAST 45 PARTS TOPSOIL, 45 PARTS SCREENED COMPOST OR MANURE AND 10 PARTS SAND.
- LANDSCAPE CONTRACTOR SHALL WARRANTY NEW PLANT MATERIAL THROUGH ONE CALENDAR YEAR FROM THE DATE OF THE OWNER ACCEPTANCE. NO PARTIAL ACCEPTANCE WILL BE CONSIDERED.
- UNLESS NOTED OTHERWISE, THE APPROPRIATE DATES FOR SPRING PLANT MATERIAL INSTALLATION AND SEEDING PLACEMENT IS FROM THE TIME GROUND HAS THAWED TO ADE 15.
- FALL SEEDING IS GENERALLY ACCEPTABLE FROM AUGUST 15 TO NOVEMBER 1. FALL SEEDING IS GENERALLY ACCEPTABLE FROM AUGUST 15 TO SEPTEMBER 15. ADJUSTMENTS TO SOGGED PLANTING DATES MUST BE APPROVED IN WRITING BY THE LANDSCAPE ARCHITECT.
- CONIFEROUS PLANTING IS GENERALLY ACCEPTABLE FROM AUGUST 15 TO OCTOBER 1. FALL DECIDUOUS PLANTING IS GENERALLY ACCEPTABLE FROM THE FIRST FROST UNTIL NOVEMBER 15. ADJUSTMENTS TO PLANTING DATES MUST BE APPROVED IN WRITING BY THE LANDSCAPE ARCHITECT.
- WRAPPING MATERIAL SHALL BE CORRUGATED POLYETHYLENE PENNY #1 GREATER IN CALIBER THAN THE TREE BEING PROTECTED OR QUALITY HEAVY WATERPROOF DEEP PAPER MANUFACTURED FOR THIS PURPOSE. WRAP TECHNIQUE: TREES PLANTED IN THE FALL PRIOR TO DECEMBER 1 AND REMOVE WRAPPING AFTER MAY 1. NO NEED BARKERS.
- PERENNIAL PLANTING BEDE TO RECEIVE 3" DEEP SHREDDED HARDWOOD MULCH WITH NO NEED BARKERS.
- SHRUB BED MESSAGING TO RECEIVE 4" DEEP SHREDDED HARDWOOD MULCH WITH FIBER MAT WOOD BARKER.
- CONIFEROUS TREES ARE TO RECEIVE 4" DEEP SHREDDED HARDWOOD MULCH AND SHALL HAVE NO MULCH IN DIRECT CONTACT WITH THE TREE TRUNK.
- POLY EDGER TO BE USED TO CONTAIN SHRUBS AND PERENNIALS WHERE PLANTING BED MEETS SOIL UNLESS OTHERWISE NOTED.
- LANDSCAPE CONTRACTOR SHALL ASSURE COMPLIANCE WITH APPLICABLE CODES AND REGULATIONS COVERING THE WORK AND/OR MATERIALS SUPPLIED.
- LANDSCAPE CONTRACTOR SHALL REVIEW THE SITE FOR DISCREPANCIES IN THE PLANT MATERIAL SELECTIONS AND OTHER SITE CONDITIONS WHICH MIGHT NEGATIVELY AFFECT PLANT ESTABLISHMENT, SURVIVAL OR WARRANTY. UNDESIRABLE PLANT MATERIAL SELECTIONS OR SITE CONDITIONS SHALL BE BROUGHT TO THE ATTENTION OF THE LANDSCAPE ARCHITECT PRIOR TO BEGINNING OF WORK.
- LANDSCAPE CONTRACTOR SHALL PREPARE AND SUBMIT RESPONSIBLE AS-BUILT DRAWINGS OF LANDSCAPE INSTALLATION, PREPARATION AND SITE IMPROVEMENTS UPON COMPLETION OF CONSTRUCTION INSTALLATION AND PRIOR TO PROJECT ACCEPTANCE.
- UNDERGROUND UTILITIES SHALL BE INSTALLED SO THAT TRENCHES DO NOT CUT THROUGH ROOT SYSTEMS OF ANY EXISTING TREES TO REMAIN.
- NO PLANTS WILL BE INSTALLED UNTIL FINAL GRADING AND CONSTRUCTION HAS BEEN COMPLETED IN THE IMMEDIATE AREA.
- SOIL AREAS DISTURBED DUE TO GRADING UNLESS NOTED OTHERWISE.
- WHERE SOIL AREAS PAVED SURFACES, FINISHED GRADE OF SOGGED SHALL BE HELD 1" BELOW SURFACE ELEVATION OF TRAIL, SLAB, CURB, ETC.
- SOIL SHALL BE LAID PARALLEL TO THE CONTOURS AND SHALL HAVE STAGGERED DOWNHILL DRIP SYSTEMS OF ANY EXISTING TREES TO REMAIN.
- PROPOSED PLANT MATERIAL SHALL COMPLY WITH THE LATEST EDITION OF THE AMERICAN STANDARDS FOR NURSERY STOCK, AND 290.1 UNLESS NOTED OTHERWISE.
- DECIDUOUS SHRUBS SHALL HAVE AT LEAST 3 LEAVES AT THE SPECIFIED HEIGHT. ORNAMENTAL TREES SHALL HAVE NO Y-CROTCHES AND SHALL BE BROWN BRANCHED LOWER THAN 2 FEET ABOVE THE ROOT BALL. STREET AND BOULEVARD TREES SHALL BE BROWN BRANCHED NO LOWER THAN 8 FEET ABOVE THE SPECIFIED GRADE.
- PLANT TARS PRECEDENCE OVER PLANT SCHEDULE IF DISCREPANCIES IN QUANTITIES EXIST. SPECIFICATIONS AND DETAILS TAKE PRECEDENCE OVER NOTES.
- NO PLANT MATERIAL SUBSTITUTIONS WILL BE ACCEPTED UNLESS APPROVAL IS REQUESTED OF THE LANDSCAPE ARCHITECT BY THE LANDSCAPE CONTRACTOR PRIOR TO THE SUBMISSION OF BID AND/OR ORDER.
- ADJUSTMENTS IN LOCATION OF PROPOSED PLANT MATERIALS MAY BE MADE IN FIELD. LANDSCAPE ARCHITECT MUST BE NOTIFIED PRIOR TO ADJUSTMENT OF PLANTS.
- LANDSCAPE CONTRACTOR SHALL INSPECT THE SITE AND BECOME FAMILIAR WITH EXISTING CONDITIONS RELATIVE TO THE NATURE AND SCOPE OF WORK.
- LANDSCAPE CONTRACTOR SHALL VERIFY PLAN LAYOUT AND DIMENSIONS SHOWN AND BRING TO THE ATTENTION OF THE LANDSCAPE ARCHITECT DISCREPANCIES WHICH MAY COMPROMISE THE DESIGN AND/OR INTENT OF THE PROJECT'S LAYOUT.
- LANDSCAPE CONTRACTOR SHALL PROTECT EXISTING ROOTS, CURBS, GUTTERS, TRAILS, TREES, LAINS AND SITE ELEMENTS DURING CONSTRUCTION OPERATIONS. DAMAGE TO SAME SHALL BE REPAIRED AT NO ADDITIONAL COST TO THE OWNER.
- LANDSCAPE CONTRACTOR SHALL VERIFY ALIGNMENT AND LOCATION OF UNDERGROUND AND ABOVE GROUND UTILITIES AND PROVIDE THE NECESSARY PROTECTION FOR SAME BEFORE CONSTRUCTION MATERIAL INSTALLATION BEGINS (MINIMUM 18" OF CLEARANCE).
- LANDSCAPE CONTRACTOR SHALL COORDINATE THE PHASES OF CONSTRUCTION AND PLANTING INSTALLATION WITH OTHER CONTRACTORS WORKING ON SITE.
- UNDERGROUND UTILITIES SHALL BE INSTALLED SO THAT TRENCHES DO NOT CUT THROUGH ROOT SYSTEMS OF EXISTING TREES TO REMAIN.
- EXISTING CONTOURS, TRAILS, VEGETATION, CURB/GUTTER AND OTHER ELEMENTS ARE BASED UPON INFORMATION SUPPLIED TO THE LANDSCAPE ARCHITECT BY OTHERS. LANDSCAPE CONTRACTOR SHALL VERIFY DISCREPANCIES PRIOR TO CONSTRUCTION AND NOTIFY LANDSCAPE ARCHITECT OF SAME.
- ALIGNMENT AND GRADES OF THE PROPOSED WALKS, TRAILS AND/OR ROADWAYS ARE SUBJECT TO FIELD ADJUSTMENT REQUIRED TO CONFORM TO LOCALIZED TOPOGRAPHIC CONDITIONS AND TO MINIMIZE TREE REMOVAL AND GRADING CHANGES IN THE ALIGNMENT AND GRADES MUST BE APPROVED BY THE LANDSCAPE ARCHITECT.
- LANDSCAPE CONTRACTOR SHALL PREPARE AND SUBMIT A WRITTEN REQUEST FOR THE OWNER ACCEPTANCE INSPECTOR OF LANDSCAPE AND SITE IMPROVEMENTS PRIOR TO SUBMITTING FINAL PAY REQUEST.
- LANDSCAPE CONTRACTOR IS RESPONSIBLE FOR ONGOING MAINTENANCE OF NEWLY INSTALLED MATERIALS UNTIL TIME OF OWNER ACCEPTANCE. ACTS OF VANDALISM OR DAMAGE WHICH MAY OCCUR PRIOR TO OWNER ACCEPTANCE SHALL BE THE RESPONSIBILITY OF THE LANDSCAPE CONTRACTOR.
- LANDSCAPE CONTRACTOR SHALL BE RESPONSIBLE FOR PROVIDING AN IRRIGATION LAYOUT PLAN AND SPECIFICATIONS AS PART OF THE SCOPE OF WORK WHEN BIDDING. THESE SHALL BE APPROVED BY THE LANDSCAPE ARCHITECT PRIOR TO ORDER AND/OR INSTALLATION. IT SHALL BE THE LANDSCAPE CONTRACTOR'S RESPONSIBILITY TO INSURE THAT SODS/DROUGHTS AND PLANTED AREAS ARE IRRIGATED PROPERLY, INCLUDING THOSE AREAS DIRECTLY AROUND AND ADJUTING BUILDING FOUNDATION.
- SHRUB & PERENNIAL BEDS TO BE IRRIGATED WITH DRIP IRRIGATION.
- LANDSCAPE CONTRACTOR SHALL PROVIDE THE OWNER WITH A WATERING/LAWN IRRIGATION SCHEDULE APPROPRIATE TO THE PROJECT SITE CONDITIONS AND TO PLANT MATERIALS GROWTH REQUIREMENTS.
- LANDSCAPE CONTRACTOR SHALL INSURE THAT SOIL CONDITIONS AND CONFACTION ARE ADEQUATE TO ALLOW FOR PROPER DRAINAGE AROUND THE CONSTRUCTION SITE. UNDESIRABLE CONDITIONS SHALL BE BROUGHT TO THE ATTENTION OF THE LANDSCAPE ARCHITECT PRIOR TO BEGINNING OF WORK. IT SHALL BE THE LANDSCAPE CONTRACTOR'S RESPONSIBILITY TO INSURE PROPER SURFACE AND SUBSURFACE DRAINAGE IN ALL PLANTING AREAS.
- COORDINATE IRRIGATION SLEEVING LOCATIONS WITH GENERAL CONTRACTOR. MAIN SENSORS TO BE INCLUDED WITHIN THE IRRIGATION DESIGN.

PLANTING NOTES:

GENERAL NOTES:

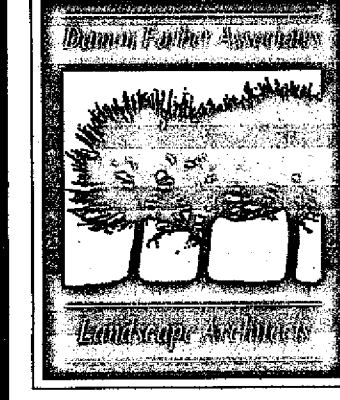
IRRIGATION NOTES:

KEY:



ARCHITECTURAL CONSORTIUM L.L.C.

901 North Third Street, Suite 220  
Minneapolis, MN 55401  
612-436-4030  
Fax 612-692-9960



Damon Farber Associates  
923 Nicollet Mall  
Minneapolis, MN 55402  
phone 612.332.7522  
fax 612.332.0936  
www.damonfarber.com

Mark Revision / Issue Date

PLANTINGS IN R.O.W., ESMTS	5/30/2006
BULLETIN #2	6/9/2006

I hereby certify that this plan, specification, or report was prepared by me or under my direct supervision, and that I am a duly Licensed Landscape Architect under the laws of the State of Minnesota.

Printed Name: Damon Farber  
Signature: *Damon Farber*  
Date: 3/8/2006 License #: 12558

THE POINT - BLOOMINGTON BLOOMINGTON, MN

LANDSCAPE PLAN

PROJECT NUMBER: 05-1050-01  
ISSUE DATE: Mar. 8, 2006  
DRAWN BY: FL  
CHECKED BY: JB  
DFA PROJECT NUMBER: 05-175

CITY OF BLOOMINGTON, MN  
LANDSCAPE PLAN APPROVED  
By: *[Signature]*  
Director of Planning  
Date: 1/23/07

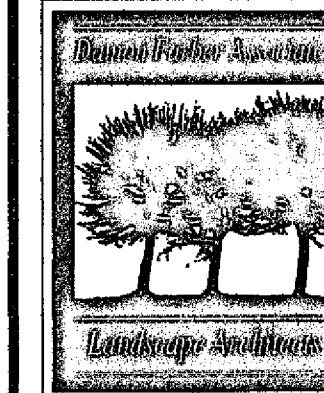
L1.0

Approved Plan

# Case 10713ABC-05

## ARCHITECTURAL CONSORTIUM L.L.C.

901 North Third Street, Suite 220 Minneapolis, MN 55401 612-436-4030 Fax 612-692-9960



Damon Farber Associates  
923 Nicollet Mall  
Minneapolis, MN 55402  
phone 612.332.7522  
fax 612.332.0936  
www.damonfarber.com

Mark	Revision / Issue	Date

I hereby certify that this plan, specification, or report was prepared by me or under my direct supervision, and that I am a duly Licensed Landscape Architect under the laws of the State of Minnesota.

Printed Name: Damon Farber  
Signature: *Damon Farber*  
Date: 3/8/2006 License #: 12998

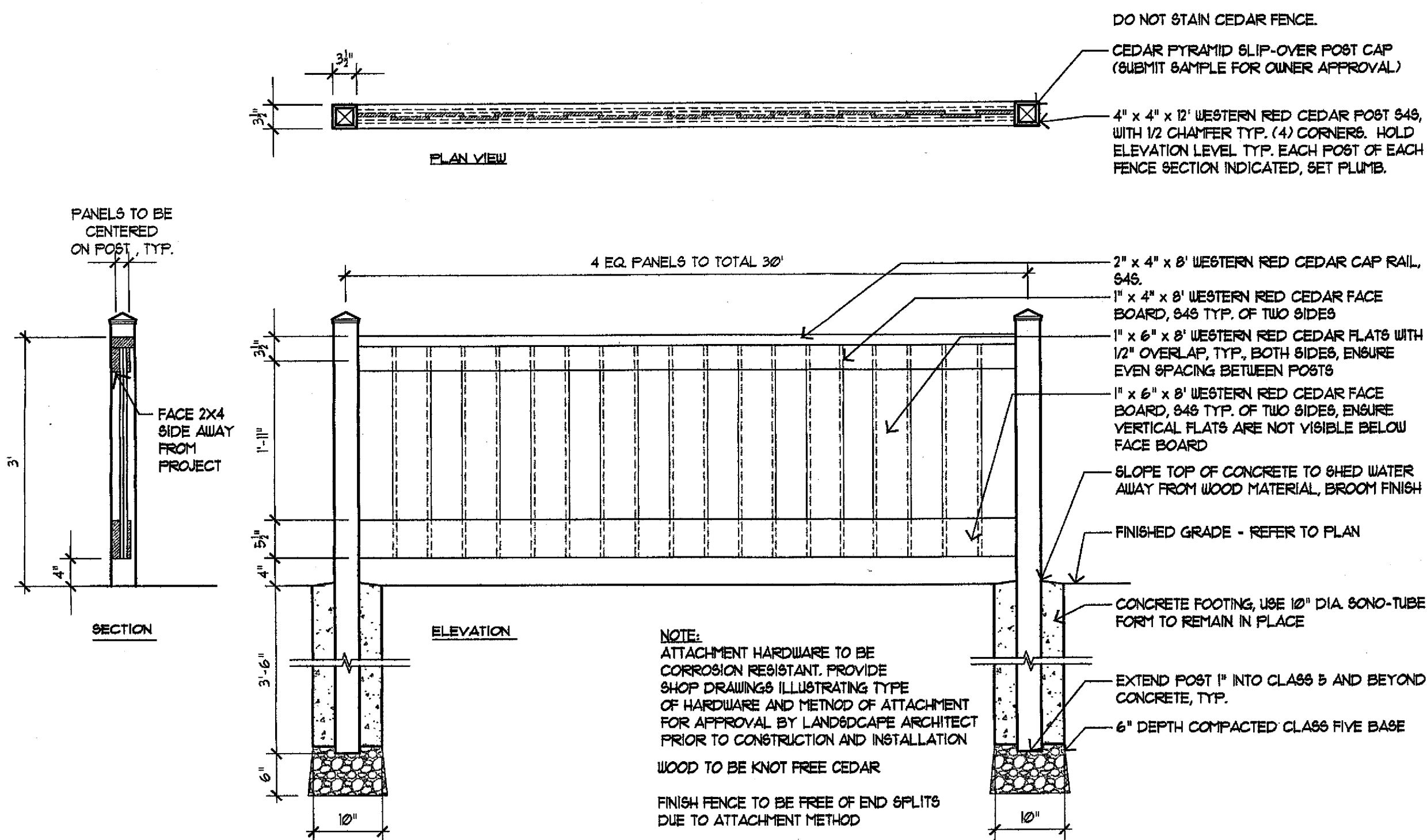
THE POINT -  
BLOOMINGTON  
  
BLOOMINGTON, MN

### LANDSCAPE DETAILS

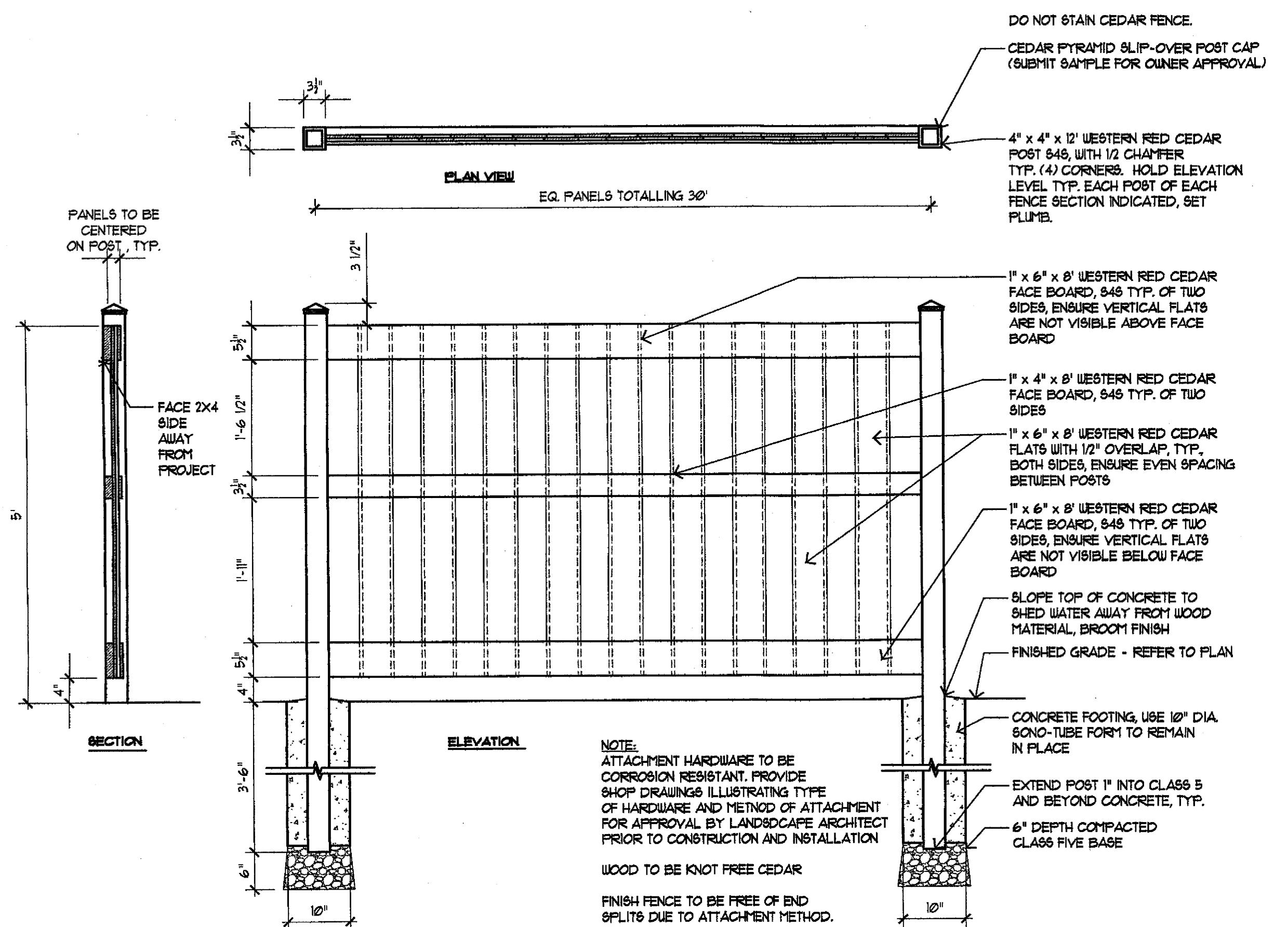
PROJECT NUMBER:	05-1050-01
ISSUE DATE:	Mar. 8, 2006
DRAWN BY:	FL
CHECKED BY:	JS
DFA PROJECT NUMBER:	05-178

L2.0

Approved Plan

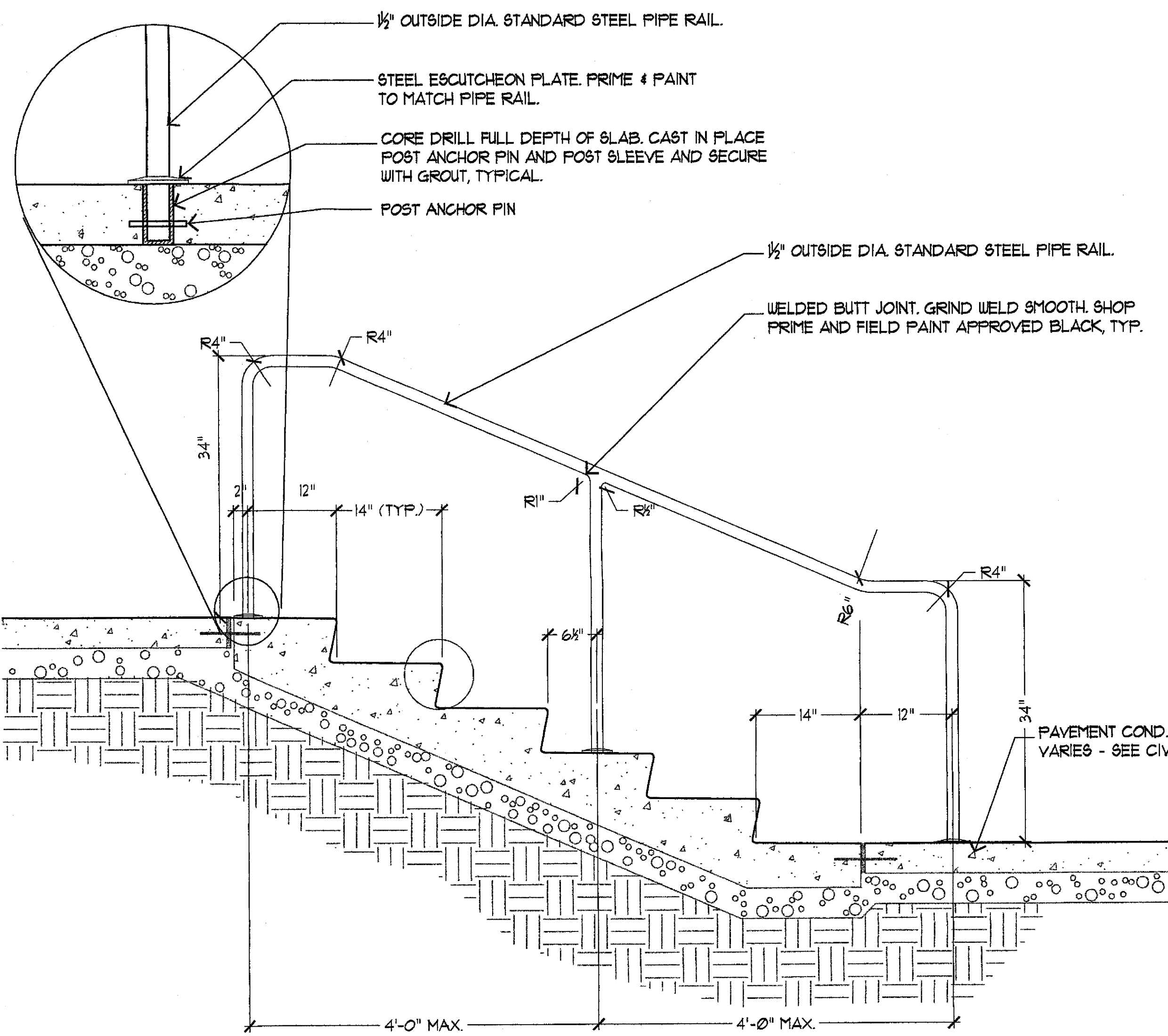


1 SECTION / ELEVATION @ 3' HGT. WESTERN RED CEDAR FENCE  
SCALE: 3/4" = 1'-0"



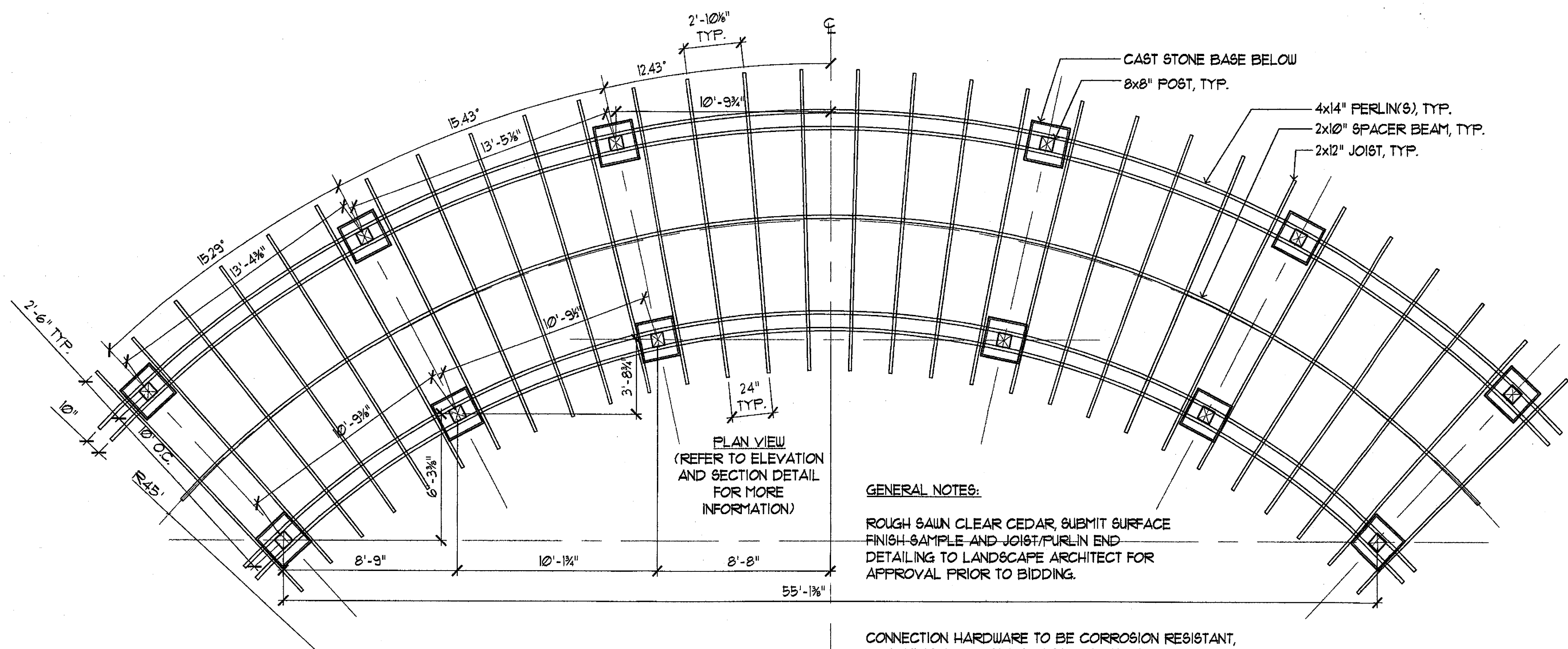
2 SECTION / ELEVATION @ 5' HGT. WESTERN RED CEDAR FENCE  
SCALE: 3/4" = 1'-0"

**GENERAL NOTES:**  
CONCRETE WORK ON STAIRS SHOWN FOR REFERENCE ONLY. SEE CIVIL DETAILS FOR STAIR-SPECIFIC INFORMATION.  
HANDRAIL TO BE 1/2" O.D. STEEL TUBING SHOP PRIMED (GALVANIC PRIMER) & FIELD PAINTED SEMI-GLOSS BLACK ENAMEL (TWO COATS).  
WALK AND STAIR LOCATION TO BE STAKED BY GENERAL CONTRACTOR PRIOR TO CONSTRUCTION.  
SUBMIT SHOP DRAWINGS OF HANDRAIL COMPONENTS FOR APPROVAL PRIOR TO CONSTRUCTION.



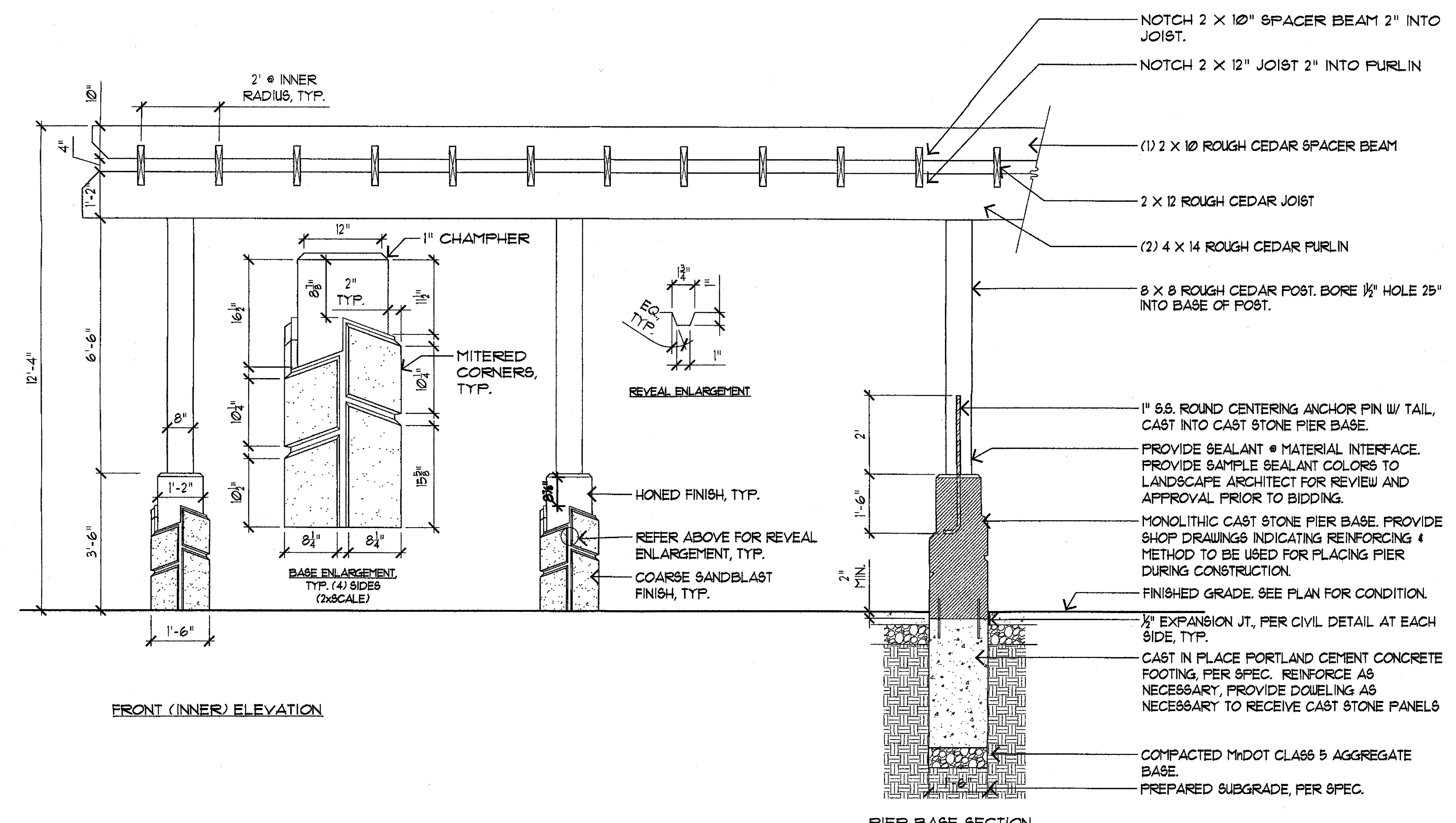
3 HANDRAIL @ CONCRETE STAIRS  
SCALE: 1" = 1'-0"

# Case 10713ABC-05

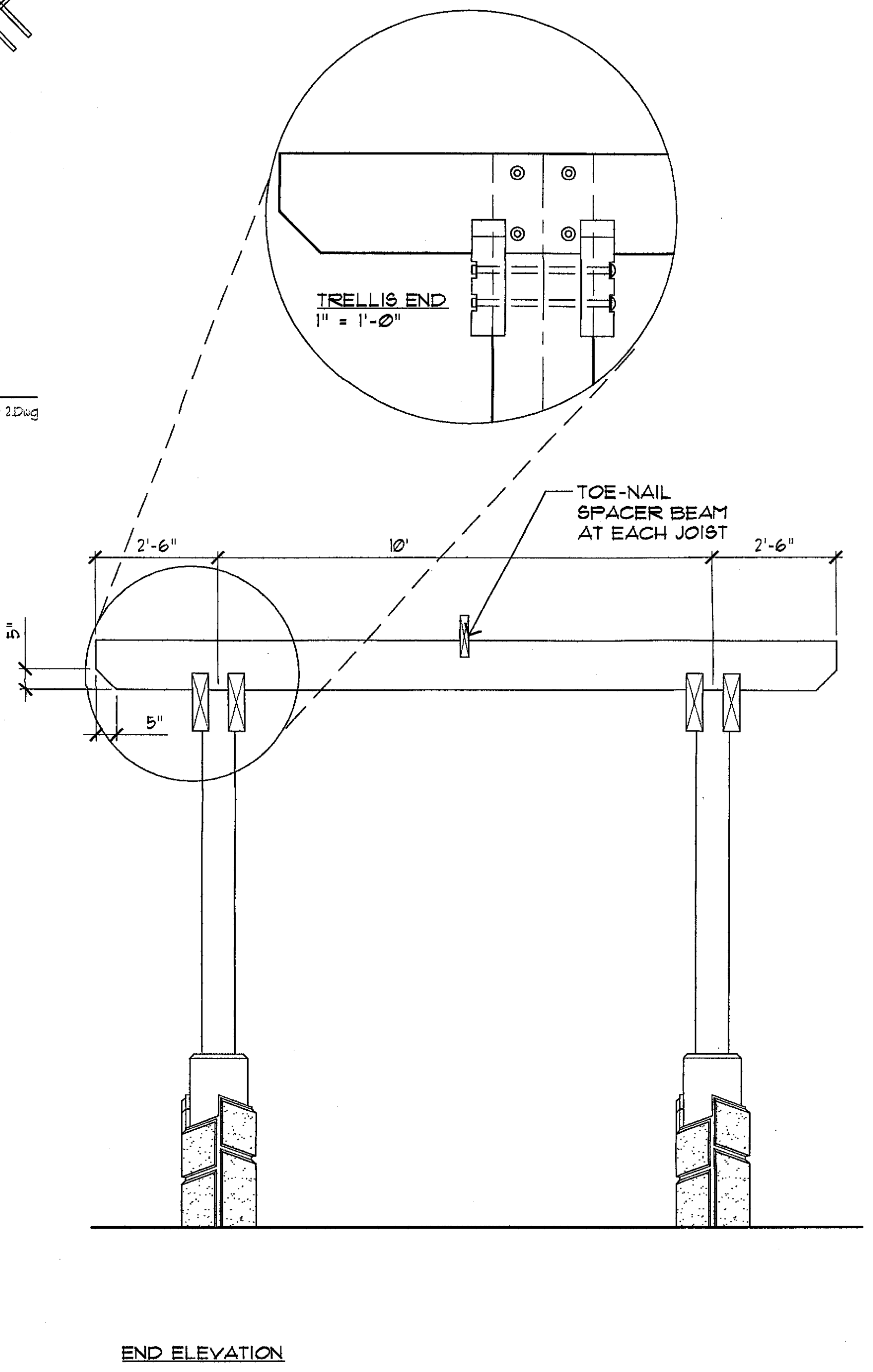


**1 ENLARGED PLAN OF WOOD ARBOR**  
SCALE: 1/4" = 1'-0"

**GENERAL NOTES:**  
 ROUGH SAWN CLEAR CEDAR, SUBMIT SURFACE FINISH SAMPLE AND JOIST/FURLIN END DETAILING TO LANDSCAPE ARCHITECT FOR APPROVAL PRIOR TO BIDDING.  
 CONNECTION HARDWARE TO BE CORROSION RESISTANT, BRACKETS TO BE SIMPSON STRONG TIE, SUBMIT SHOP DRAWINGS OF REQUIRED CONNECTIONS TO LANDSCAPE ARCHITECT FOR APPROVAL PRIOR TO BIDDING AND CONSTRUCTION.



**2 CEDAR ARBOR ELEVATIONS & SECTIONS**  
SCALE: 1/2" = 1'-0"



## ARCHITECTURAL CONSORTIUM L.L.C.

901 North Third Street, Suite 220 612-436-4030  
 Minneapolis, MN 55401 Fax 612-692-9960



Damon Farber Associates  
 923 Nicollet Mall  
 Minneapolis, MN 55402  
 phone 612.332.7522  
 fax 612.332.0936  
 www.damonfarber.com

Mark	Revision / Issue	Date

I hereby certify that this plan, specification, or report was prepared by me or under my direct supervision, and that I am a duly Licensed Landscape Architect under the laws of the State of Minnesota.  
 Printed Name: Damon Farber  
 Signature: *Damon Farber*  
 Date: 3/8/2006 License #: 12898

**THE POINT - BLOOMINGTON**  
 BLOOMINGTON, MN

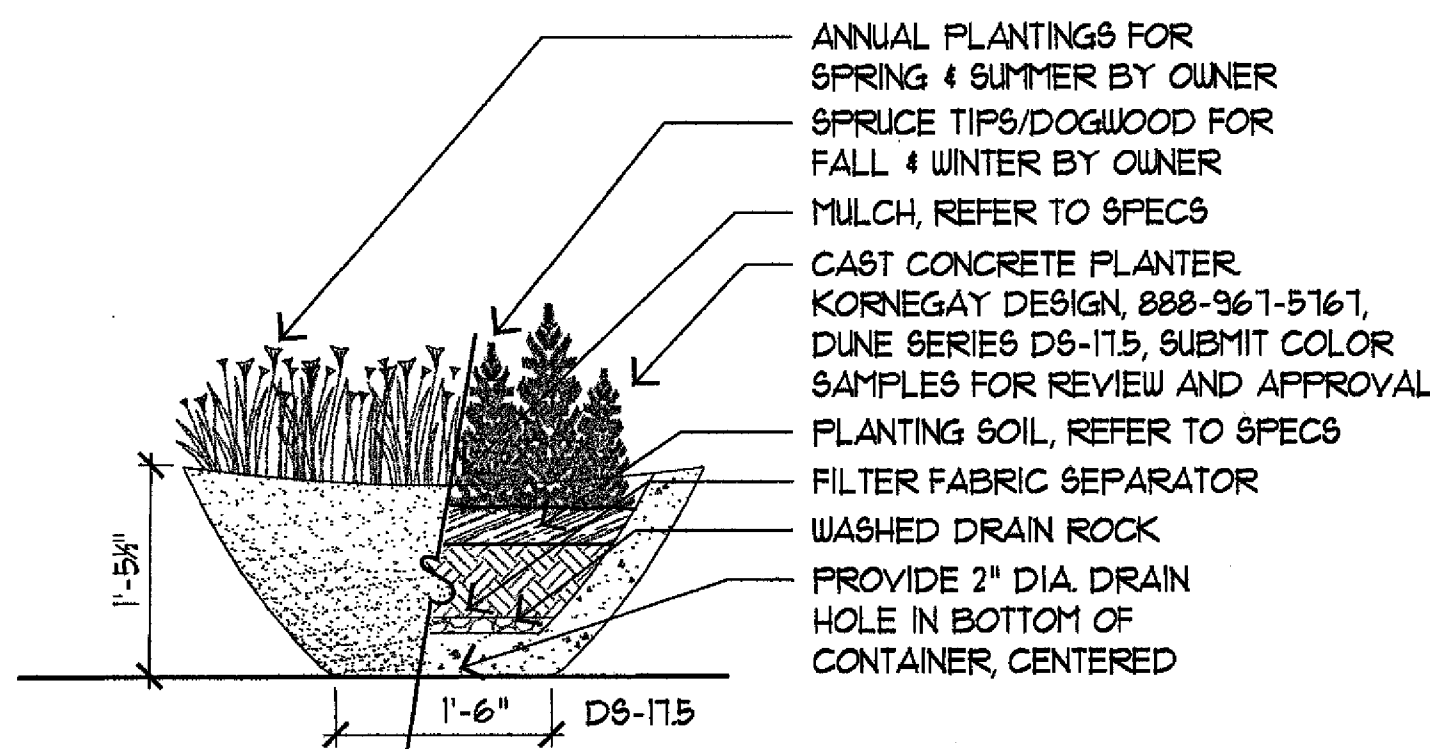
## LANDSCAPE DETAILS

PROJECT NUMBER:	05-1050-01
ISSUE DATE:	Mar. 8, 2006
DRAWN BY:	PL
CHECKED BY:	JS
DFA PROJECT NUMBER:	05-178

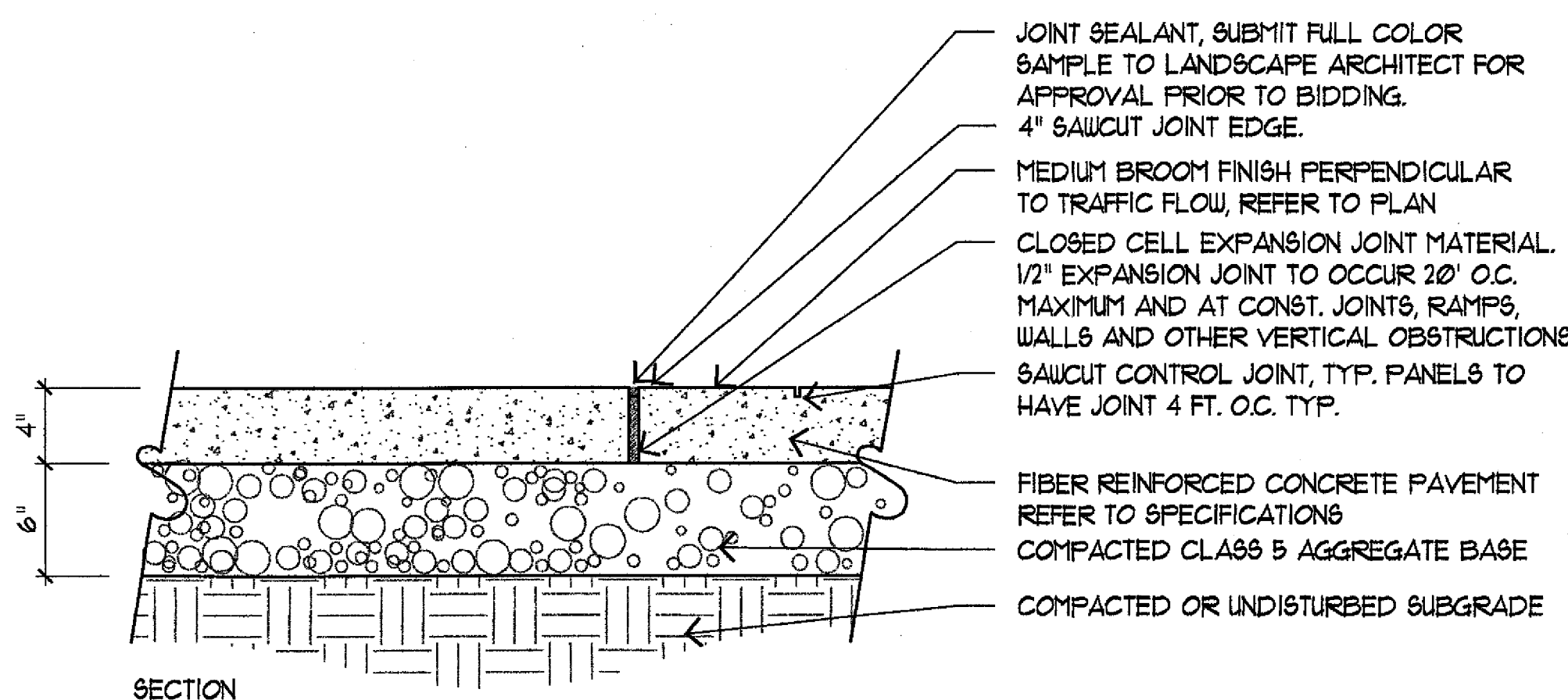
**L2.1**

Approved Plan

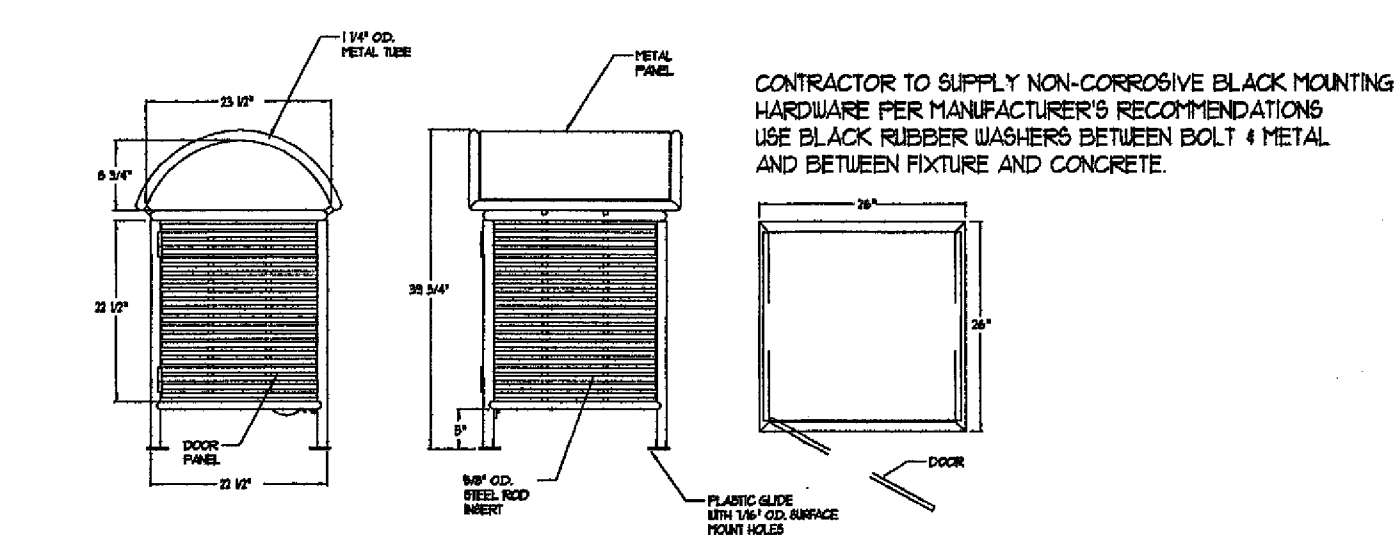
# Case 10713ABC-05



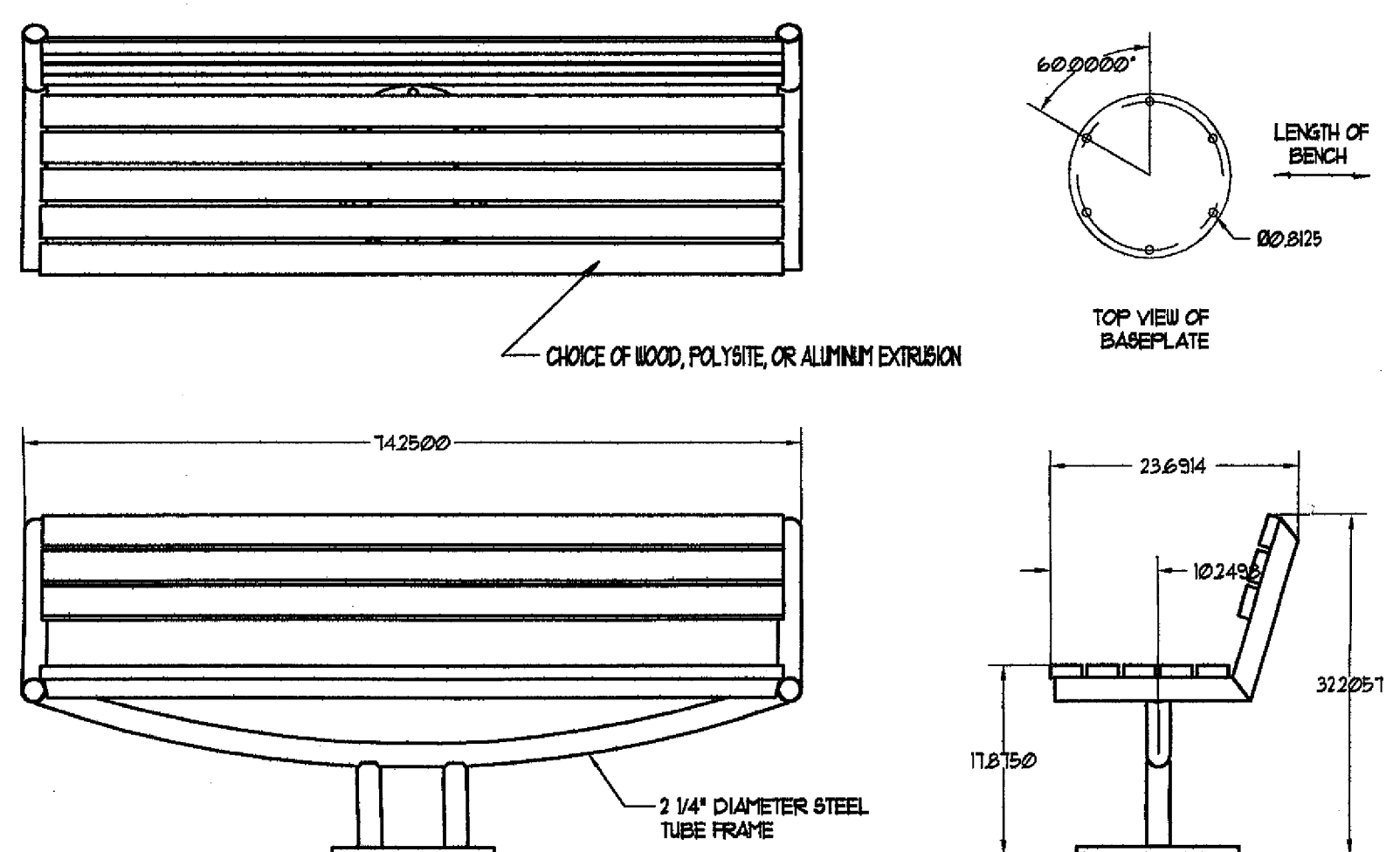
**1 CAST STONE PLANTER - TYP. (6)**  
SCALE: N.T.S.



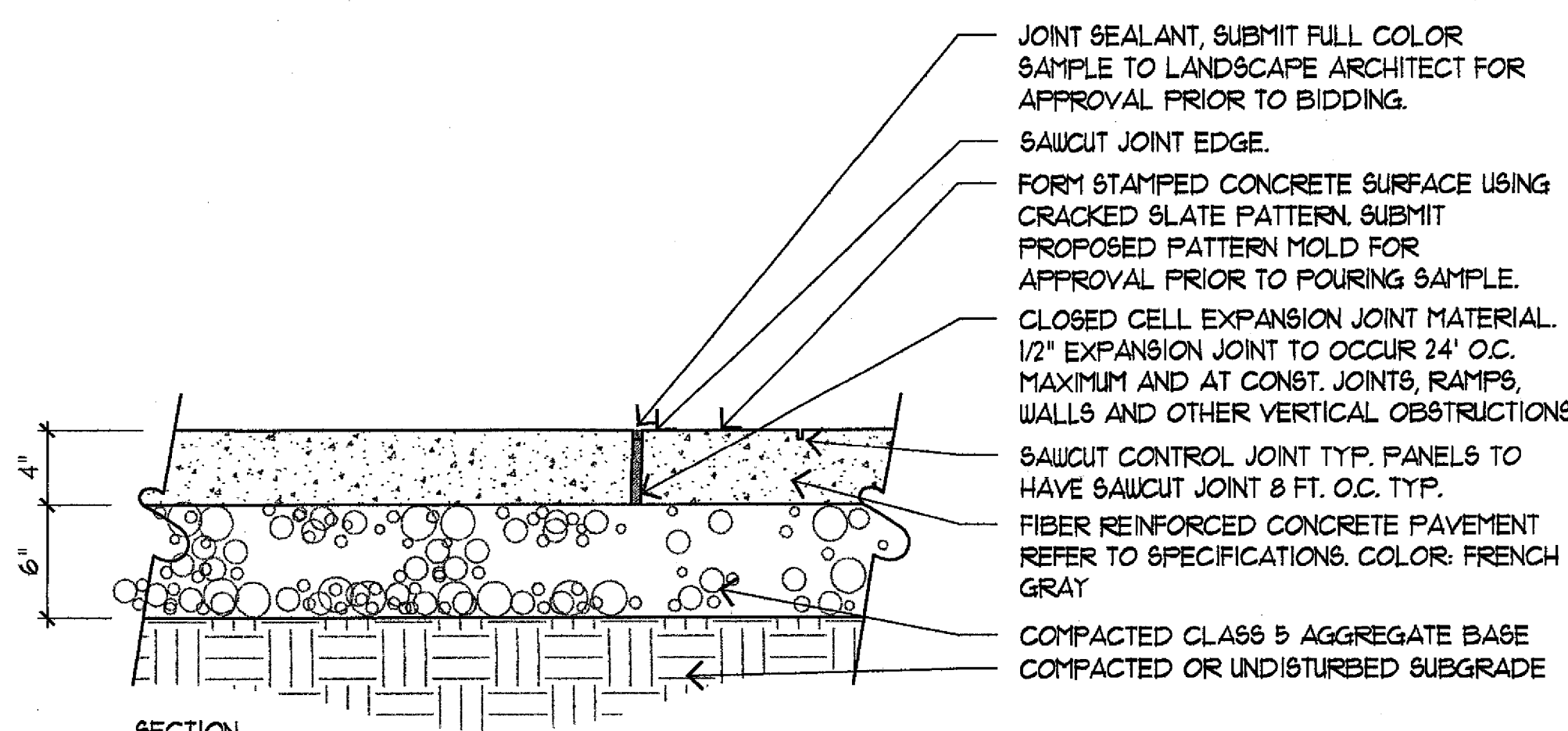
**4 4" CONCRETE WALK**  
SCALE: 1/2" = 1'-0"



**7 LITTER RECEPTACLE - TYP (3)**  
SCALE: N.T.S.

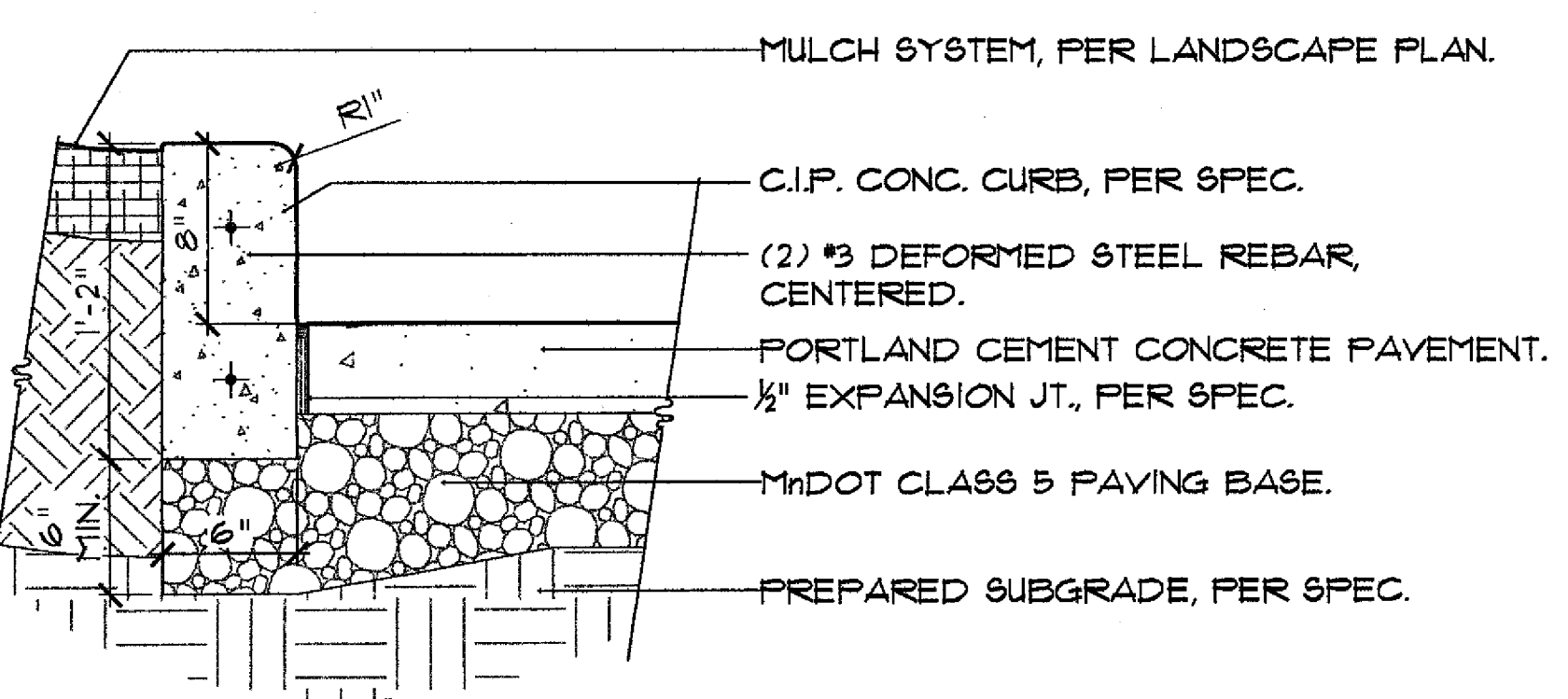


**2 6' ORNAMENTAL METAL BENCH - TYP. (4)**  
SCALE: N.T.S.

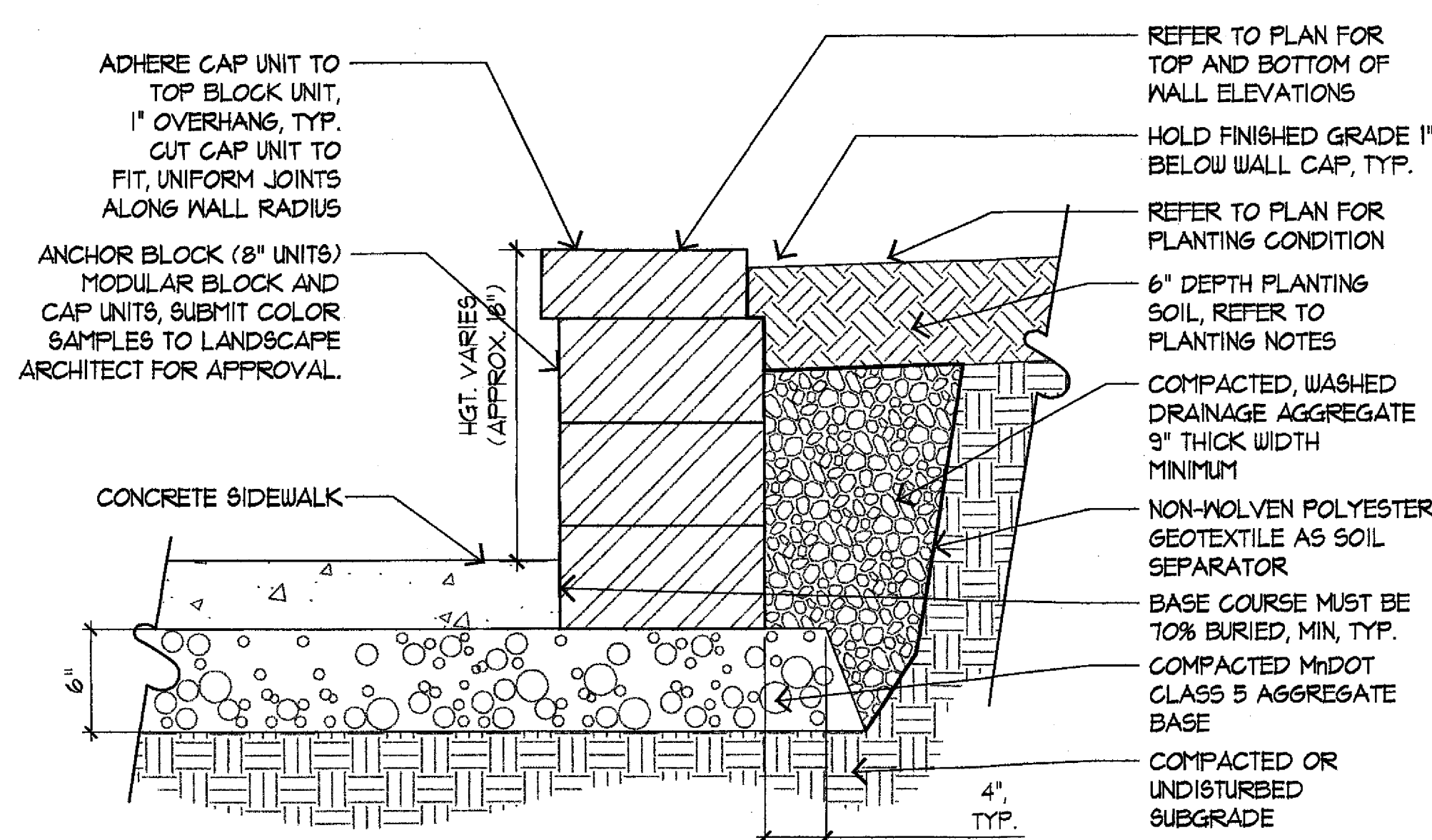


**5 4" STAMPED & COLORED CONCRETE WALK**  
SCALE: 1/2" = 1'-0"

**Landscapiform**  
4110 LINDALE AVE. FOND DU LAC, WI 54601  
KALYANDEVI K. KHANDE FOUNDER  
CONTRACTOR TO SUPPLY NON-CORROSIVE BLACK MOUNTING HARDWARE PER MANUFACTURER'S RECOMMENDATIONS. USE BLACK RUBBER WASHERS BETWEEN BOLT & METAL AND BETWEEN FIXTURE AND CONCRETE.  
DATE: 05-05-04  
AUTHOR: JFR



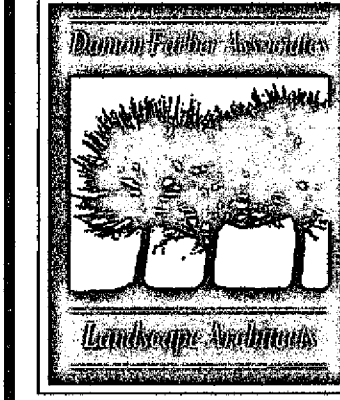
**3 SECTION @ 8 INCH VERTICAL CURB**  
SCALE: 1/2" = 1'-0"



**6 MODULAR BLOCK RETAINING WALL**  
SCALE: 1/2" = 1'-0"

## ARCHITECTURAL CONSORTIUM L.L.C.

901 North Third Street, Suite 220  
Minneapolis, MN 55401



Damon Farber Associates  
923 Nicollet Mall  
Minneapolis, MN 55402  
phone 612.332.7522  
fax 612.332.0936  
www.damonfarber.com

Mark	Revision / Issue	Date
------	------------------	------

I hereby certify that this plan, specification, or report was prepared by me or under my direct supervision, and that I am a duly Licensed Landscape Architect under the laws of the State of Minnesota.

Printed Name: Damon Farber  
Signature: *Damon Farber*  
Date: 3/8/2006 License #: 12938

THE POINT -  
BLOOMINGTON  
BLOOMINGTON, MN

## LANDSCAPE DETAILS

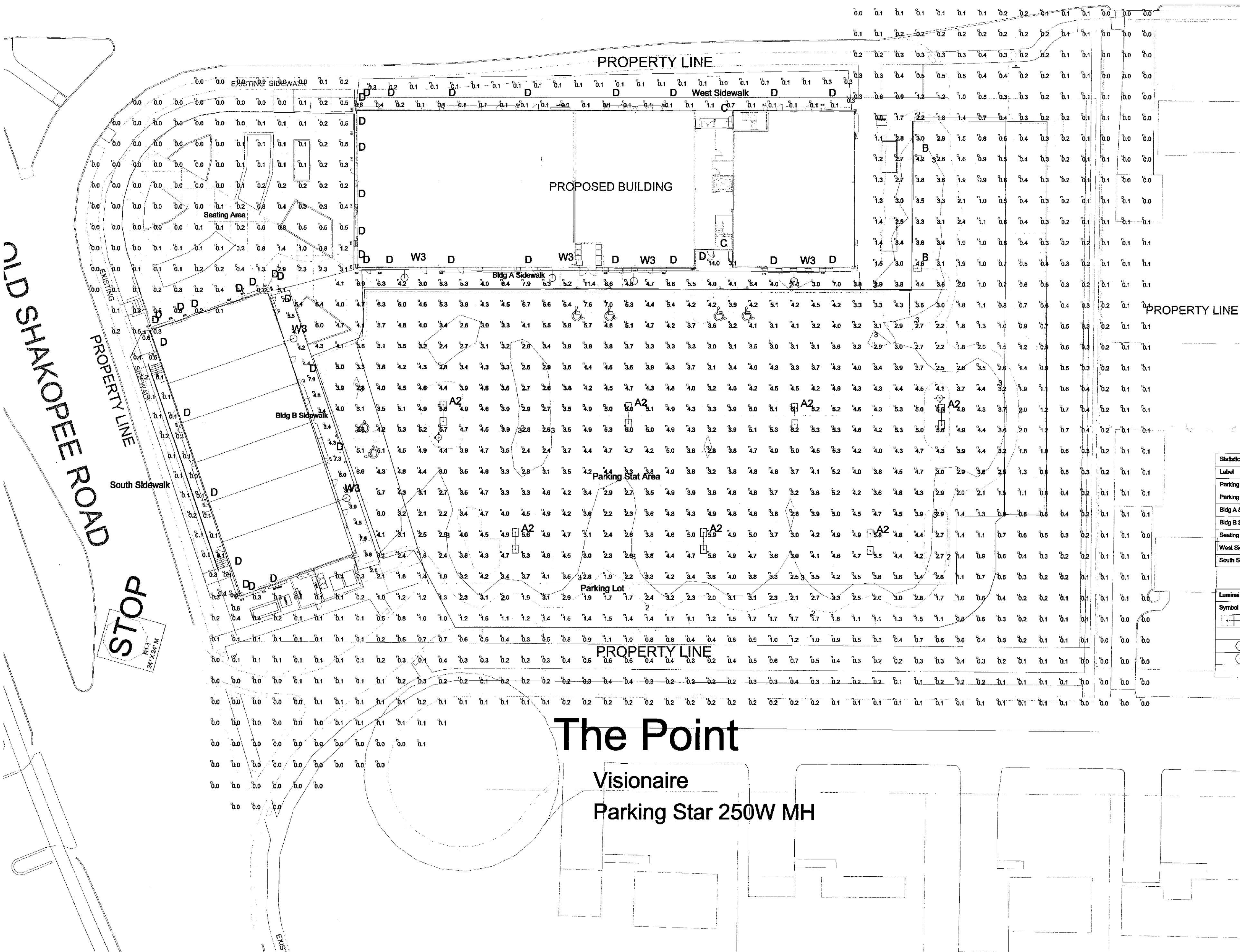
PROJECT NUMBER:	05-1050-01
ISSUE DATE:	Mar. 8, 2006
DRAWN BY:	FL
CHECKED BY:	JS
DFA PROJECT NUMBER:	05-178

L2.2 Approved Plan



FRANCE AVE.

OLD SHAKOPEE ROAD



# The Point

Visionaire  
Parking Star 250W MH

## Mid-Northern Electric

1299 Eagan Industrial Road  
Suite 101  
Eagan, MN 55121

Contact Person: Dan Johnson  
Date: Sep. 07, 06  
Revised: Sep. 08, 06  
Sep. 13, 06

Label	Avg	Max	Min	Avg/Min	Max/Min	Description
Parking Stat Area	3.76	7.6	0.5	7.52	15.20	Horiz FC at grade in parking area statistical area
Parking Lot	3.38	7.6	0.3	11.27	25.33	Horiz FC at grade in parking lot
Bldg A Sidewalk	5.48	11.4	1.8	3.04	6.33	Horiz FC at grade at Bldg. A sidewalk
Bldg B Sidewalk	5.01	7.6	3.1	1.62	2.45	Horiz FC at grade at Bldg B sidewalk
Seating Area	0.40	5.1	0.0	N.A.	N.A.	Horiz FC at grade in seating area at corner
West Sidewalk	0.16	1.1	0.0	N.A.	N.A.	Horiz FC at grade along west sidewalk
South Sidewalk	0.20	0.8	0.0	N.A.	N.A.	Horiz FC at grade along south sidewalk

Symbol	Qty	Label	Arrangement	Lumens	LLF	Description
	7	A2	BACK-BACK	22500	0.750	Visionaire Parking Star PST 250MH-TS-HLFG-SEG 250W MH PS 2@180
	2	B	SINGLE	22500	0.750	Visionaire Parking Star PST 250MH-T3-HLFG-SEG 250W MH PS single
	2	C	SINGLE	5600	0.750	Road RT30MH 70W MH lamp recessed
	41	D	SINGLE	920	0.610	Forecast F8460 series 2-40W Incand. decorative wall
	6	W3	SINGLE	25000	0.700	Visionaire Monterey MON-2 T3-250PS-VLFG-Type III house shield wall mount (ESIM2)

SeqNo	Label	X	Y	Z	Orient
1	A2	106	118.75	25	90
2	A2	346.75	117.5	25	90
3	A2	188.75	116	25	270
4	A2	276	117.75	25	270
5	A2	141	58	25	270
6	A2	232	58	25	270
7	A2	312.5	57.5	25	270
8	B	330.75	241	25	0
9	B	330.75	188.75	25	0
10	C	236.75	194.5	10	270
11	C	237	259.5	10	0
12	D	64	186.5	8	270
13	D	75.25	186.5	8	270
14	D	226.5	188.25	8	270
15	D	61.75	284.5	8	180
16	D	61.75	189	8	180
17	D	61.75	200.25	8	180
18	D	-36.5	189	8	108.435
19	D	-25.75	163.75	8	108.435
20	D	9	175.75	8	108.435
21	D	19.75	179.5	8	108.435
22	D	61.75	253	8	180
23	D	105	186.5	12	270
24	D	142.25	186.5	12	270
25	D	184.5	186.5	12	270
26	D	212.5	186.5	12	270
27	D	261	186.25	12	270
28	D	288.25	186.75	12	270
29	D	289	266.75	13	90
30	D	261	296.75	13	90
31	D	212.25	286.75	13	90
32	D	184.75	286.75	13	90
33	D	141.75	286.75	13	90
34	D	105.25	286.75	13	90
35	D	64	266.75	8	90
36	D	75.75	266.75	8	90
37	D	26	167.75	8	17.103
38	D	22.5	178.5	8	17.103
39	D	38.25	194.25	12	17.103
40	D	51.25	96.75	12	17.103
41	D	-19	165.25	12	108.435
42	D	2.5	172.75	12	108.435
43	D	61.75	215	12	180
44	D	61.75	240.5	12	180
45	D	-38	157.5	8	188.435
46	D	-34	146.75	8	188.435
47	D	2.25	42.25	8	188.435
48	D	6	31.25	8	188.435
49	D	-22.5	113	12	188.435
50	D	-8.5	75	12	188.435
51	D	8.75	30.25	8	284.036
52	D	19.25	34	8	286.39
53	W3	275.5	188.25	19.33	270
54	W3	188.25	185.25	19.33	270
55	W3	67.25	187.75	17.33	270
56	W3	198.75	187.75	17.33	270
57	W3	56.5	77	17.33	18.853
58	W3	29.75	153.25	17.33	18.853