

REFERENCE NOTES SCHEDULE

SYMBOL	DESCRIPTION	QTY	DETAIL	MANUFACTURER	PRODUCT MODEL	
[CB-02]	CURB CONCRETE PLANTER CURB	501 LF	4L500	CAST-IN-PLACE CONCRETE	12" X 12" CONCRETE CURB	
EDGING						
SYMBOL	DESCRIPTION	QTY	DETAIL			
[ED-01]	EDGING TYPE 1 - STEEL EDGER	999 LF	5L500			
FENCE & GUARDRAIL						
SYMBOL	DESCRIPTION	QTY	DETAIL	MATERIAL PROFILE/ASSEMBLY		
[FE-01]	FENCE TYPE 1 - CHAIN LINK - 4.5'	143 LF	7L500	BLACK VINYL CHAIN LINK WITH 4" WIDE GATE		
LANDSCAPE AMENITY						
SYMBOL	DESCRIPTION	QTY	DETAIL	MATERIAL PROFILE		
[LA-01]	COMMUNITY GARDEN PLANTER	8		VEG TRUG PATIO GARDEN PLANTER		
MINERAL MULCH						
SYMBOL	DESCRIPTION	QTY	DETAIL	MANUFACTURER	PRODUCT MODEL	
[MM-01]	MINERAL MULCH- ROCK MULCH	17.35 CY		GREY TRAP ROCK	1-1/2" DIA.	
PAVING						
SYMBOL	DESCRIPTION	QTY	DETAIL	MATERIAL PROFILE/ASSEMBLY		
[P-01]	PAVING TYPE 1 - CONCRETE WALK	8,417 SF				
[P-03]	PAVING TYPE 3 - CRUSHED STONE	2,864 SF	6L500	3/16" MINUS GREY TRAP ROCK		
SITE FURNITURE						
SYMBOL	DESCRIPTION	QTY	DETAIL	MATERIAL PROFILE/ASSEMBLY	MANUFACTURER	PRODUCT MODEL
[SF-01]	BENCH TYPE 1 - DOUBLE	1	8L500	DOUBLE BENCH	LANDSCAPE FORMS	168" BANCAL BACKLESS BENCH
[SF-02]	BENCH TYPE 2 - SINGLE	3	8L500	SINGLE BENCH	LANDSCAPE FORMS	88" BANCAL BACKLESS BENCH
[SF-03]	BIKE RACK	2	9L500	SURFACE MOUNT BIKE RACK	DERO	HOOP RACK
SIGNAGE						
SYMBOL	DESCRIPTION	QTY	DETAIL	MATERIAL PROFILE/ASSEMBLY	COLOR/FINISH	
[SN-101]	SIGN TYPE 1 - DO NOT ENTER SIGN	2	10L500	ALUMINUM 5" SIGN	GREY	
SOIL PROFILE						
SYMBOL	DESCRIPTION	QTY	DETAIL	DEPTH	COMPOSITION	
[SP-01]	SOIL TYPE 1 - GREEN ROOF SOIL	1,296 SF		12" GREEN ROOF SOIL	SEMI-INTENSIVE ROOF SOIL	

PLANT SCHEDULE

SYMBOL	CODE	QTY	BOTANICAL / COMMON NAME	SIZE	CONT.	NOTES	SPACING
DECIDUOUS TREES							
[BF]	5	BETULA PLATYPHYLLA 'FARGO' TM DAKOTA PINNACLE WHITE BIRCH	2" CAL.	B&B	SINGLE STEM		
[GP]	4	GINKGO BILOBA 'PRINCETON SENTRY' PRINCETON SENTRY MAIDENHAIR TREE	2.5" CAL.	B&B	NATURAL FORM, SINGLE LEADER		
[TH-B2]	6	TILIA AMERICANA 'BOULEVARD' BOULEVARD LINDEN	2.5" CAL.	B&B			
EVERGREEN TREES							
[JM]	9	JUNIPERUS SCOPULORUM 'MEDORA' MEDORA JUNIPER	6' HT.	B&B	NATURAL FORM, SINGLE LEADER		
ORNAMENTAL TREES							
[AG]	10	AMELANCHIER X GRANDIFLORA 'AUTUMN BRILLIANCE' 'AUTUMN BRILLIANCE' SERVICEBERRY	8' HT. CLUMP	B&B			
[CA3]	2	CORNUS ALTERNIFOLIA PAGODA DOGWOOD	2" CAL.	B&B			
[MC]	7	MALUS X 'CORAL COLE' CORALBURSTS CRABAPPLE	2" CAL.	B&B			
[MJ]	4	MALUS X 'JEWEL COLE' RED 'JEWEL' CRABAPPLE	2" CAL.	B&B			
DECIDUOUS SHRUBS							
[CA]	11	CORNUS SERICEA 'ALLEMAN'S COMPACT' DWARF RED TWIG DOGWOOD	#2	POT	SPACE 5'-0" O.C.	60" o.c.	
[DL]	50	DIERILLA LONICERA DWARF BUSH HONEYSUCKLE	#5	POT	SPACE 3'-6" O.C.	42" o.c.	
[HL2]	24	HYDRANGEA PANICULATA 'LITTLE LIME' LITTLE LIME HYDRANGEA	#2	CONT.	SPACE 4'-0" O.C.	48" o.c.	
[RG]	128	RHUS AROMATICA 'GRO-LOW' GRO-LOW FRAGRANT SUMAC	#5	POT	SPACE 5'-0" O.C.	60" o.c.	
[SS4]	20	SORBARIA SORBIFOLIA 'SEM' SEM ASH LEAF SPIREA	#2	CONT.	SPACE 3'-0" O.C.	36" o.c.	
EVERGREEN SHRUBS							
[JT]	112	JUNIPERUS CHINENSIS 'MONLEP' MINT JUNIPER CHINESE JUNIPER	#5	POT	SPACE 4'-6" O.C.	54" o.c.	
[TT2]	3	TAXUS X MEDIA 'TAUNTONII' TAUNTON YEW	#2	POT	SPACE 4'-0" O.C.	48" o.c.	
GRASSES							
[CK]	106	CALAMAGROSTIS X ACUTIFLORA 'KARL FOERSTER' FEATHER REED GRASS	#1	POT	SPACE 2'-0" O.C.	24" o.c.	
[PA-H]	87	PANICUM VIRGATUM 'HEAVY METAL' HEAVY METAL SWITCH GRASS	#1	POT	SPACE 2'-6" O.C.	30" o.c.	
[SB]	9	SCHIZACHYRIUM SCOPARIUM 'BLUE HEAVEN' BLUE HEAVEN LITTLE BLUESTEM	#1	CONT.	SPACE 2'-0" O.C.	24" o.c.	
[SP-H]	6	SPOROBOLIUS HETEROLEPIS PRAIRIE DROPSEED	#1	POT	SPACE 1'-6" O.C.	18" o.c.	
PERENNIALS							
[AT-S]	11	ALLIUM TANGUTICUM 'SUMMER BEAUTY' SUMMER BEAUTY GLOBE LILY	#1	POT	SPACE 1'-6" O.C.	18" o.c.	
[EP3]	15	ECHINACEA PALLIDA PALE PURPLE CONEFLOWER	#1	POT	SPACE 2'-0" O.C.	24" o.c.	
[EC-W]	21	ECHINACEA PURPUREA 'WHITE SWAN' WHITE SWAN CONEFLOWER	#1	POT	SPACE 1'-6" O.C.	18" o.c.	
[LH-K]	6	LIATRIS SPICATA 'KOBOLD' KOBOLD GLAZED STAR	#1	POT	SPACE 2'-0" O.C.	24" o.c.	
[PE-A]	15	PEROVSKIA ATRIPLICIFOLIA 'BLUE JEAN BABY' BLUE JEAN BABY RUSSIAN SAGE	#1	POT	SPACE 3'-0" O.C.	30" o.c.	
GROUND COVERS							
[SOD]	9,816 SF	SOD					
[EC]	130	ELYMUS CANADENSIS CANADA WILD RYE		PLUG		30% @ 24" o.c.	
[LG]	87	LIATRIS PYCNOSTACHYA PRAIRIE GAY FEATHER		PLUG		20% @ 24" o.c.	
[PV]	87	PANICUM VIRGATUM SWITCH GRASS		PLUG		20% @ 24" o.c.	
[RH]	87	RUBROEGALIS BLACK-EYED SUSAN		PLUG		20% @ 24" o.c.	
[SR]	43	SOLIDAGO RIGIDA STIFF GOLDENROD		PLUG		10% @ 24" o.c.	
[AP]	1,389 SF	PERENNIAL / GRASSES MIX					
[AP]	107	ASTILBE 'CHINENSIS' 'PURPURKERZE' PURPLE CANDLES CHINESE ASTILBE	#1			30% @ 24" o.c.	
[CO]	107	CAREX MUSKINGUMENSIS 'OEHME' OEHME PALM SEDGE	#1			30% @ 24" o.c.	
[CP]	71	CAREX PENNSYLVANICA PENNSYLVANIA SEDGE	#1			20% @ 24" o.c.	
[TS]	71	TIARELLA X 'SUGAR AND SPICE' SUGAR AND SPICE FOAMFLOWER	#1			20% @ 24" o.c.	

SITE AND LANDSCAPE NOTES

SITE PREPARATION NOTES

- CONTRACTOR SHALL INSPECT THE SITE AND BECOME FAMILIAR WITH EXISTING CONDITIONS RELATING TO THE NATURE AND SCOPE OF WORK.
 - CONTRACTOR SHALL VERIFY PLAN LAYOUT AND BRING TO THE ATTENTION OF THE LANDSCAPE ARCHITECT DISCREPANCIES WHICH MAY COMPROMISE THE DESIGN OR INTENT OF THE LAYOUT.
 - CONTRACTOR SHALL ASSURE COMPLIANCE WITH APPLICABLE CODES AND REGULATIONS GOVERNING THE WORK AND MATERIALS SUPPLIED.
 - CONTRACTOR SHALL PROTECT EXISTING ROADS, CURBS/GUTTERS, TRAILS, TREES, LAWNS AND SITE ELEMENTS DURING CONSTRUCTION OPERATIONS. DAMAGE TO SAME SHALL BE REPAIRED AT NO ADDITIONAL COST TO THE OWNER.
 - CONTRACTOR SHALL VERIFY ALIGNMENT AND LOCATION OF UNDERGROUND AND ABOVE GRADE UTILITIES AND PROVIDE THE NECESSARY PROTECTION FOR SAME BEFORE CONSTRUCTION BEGINS (MINIMUM 10' CLEARANCE).
 - CONTRACTOR SHALL COORDINATE THE PHASES OF CONSTRUCTION AND PLANTING INSTALLATION WITH OTHER CONTRACTORS WORKING ON SITE.
 - UNDERGROUND UTILITIES SHALL BE INSTALLED SO THAT TRENCHES DO NOT CUT THROUGH ROOT SYSTEMS OF EXISTING TREES TO REMAIN.
 - EXISTING CONTOURS, TRAILS, VEGETATION, CURB/GUTTER AND OTHER ELEMENTS ARE BASED UPON INFORMATION SUPPLIED TO THE LANDSCAPE ARCHITECT BY OTHERS. CONTRACTOR SHALL VERIFY DISCREPANCIES PRIOR TO CONSTRUCTION AND NOTIFY LANDSCAPE ARCHITECT OF SAME.
 - HORIZONTAL AND VERTICAL ALIGNMENT OF PROPOSED WALKS, TRAILS OR ROADWAYS ARE SUBJECT TO FIELD ADJUSTMENT REQUIRED TO CONFORM TO LOCALIZED TOPOGRAPHIC CONDITIONS AND TO MINIMIZE TREE REMOVAL AND GRADING. CHANGES IN ALIGNMENT AND GRADES MUST BE APPROVED BY THE LANDSCAPE ARCHITECT PRIOR TO IMPLEMENTATION.
 - CONTRACTOR SHALL REVIEW THE SITE FOR DEFICIENCIES IN SITE CONDITIONS WHICH MIGHT NEGATIVELY AFFECT PLANT ESTABLISHMENT, SURVIVAL OR WARRANTY. UNDESIRABLE SITE CONDITIONS SHALL BE BROUGHT TO THE ATTENTION OF THE LANDSCAPE ARCHITECT PRIOR TO COMMENCEMENT OF WORK.
 - EXISTING TREES OR SIGNIFICANT SHRUB MASSINGS FOUND ON SITE SHALL BE PROTECTED AND SAVED UNLESS NOTED TO BE REMOVED OR ARE LOCATED IN AN AREA TO BE GRADED. QUESTIONS REGARDING EXISTING PLANT MATERIAL SHALL BE BROUGHT TO THE ATTENTION OF THE LANDSCAPE ARCHITECT PRIOR TO REMOVAL.
 - CONTRACTOR SHALL PREPARE AND SUBMIT A WRITTEN REQUEST FOR THE SUBSTANTIAL COMPLETION INSPECTION OF LANDSCAPE AND SITE IMPROVEMENTS PRIOR TO SUBMITTING FINAL PAY REQUEST.
 - CONTRACTOR SHALL PREPARE AND SUBMIT REPRODUCIBLE AS-BUILT DRAWING(S) OF LANDSCAPE INSTALLATION, IRRIGATION AND SITE IMPROVEMENTS UPON COMPLETION OF CONSTRUCTION INSTALLATION AND PRIOR TO SUBSTANTIAL COMPLETION.
 - SYMBOLS ON PLAN DRAWING TAKE PRECEDENCE OVER SCHEDULES IF DISCREPANCIES IN QUANTITIES EXIST. SPECIFICATIONS AND DETAILS TAKE PRECEDENCE OVER NOTES.
- PLANTING**
- SPRING PLANT MATERIAL INSTALLATION IS FROM APRIL 15 TO JUNE 15.
 - FALL CONIFEROUS PLANTING IS ACCEPTABLE FROM AUGUST 21 TO SEPTEMBER 30.
 - FALL DECIDUOUS PLANTING IS ACCEPTABLE FROM AUGUST 15 UNTIL NOVEMBER 15.
 - ADJUSTMENTS TO PLANTING DATES MUST BE APPROVED IN WRITING BY THE LANDSCAPE ARCHITECT.
 - STAKE PROPOSED PLANTING LOCATIONS PER PLAN FOR REVIEW AND APPROVAL BY LANDSCAPE ARCHITECT PRIOR TO INSTALL.
 - PLANT MATERIAL SHALL COMPLY WITH THE CURRENT EDITION OF THE AMERICAN STANDARD FOR NURSERY STOCK, ANSI Z60.1. UNLESS NOTED OTHERWISE, DECIDUOUS SHRUBS SHALL HAVE AT LEAST 5 CANES AT THE SPECIFIED HEIGHT. ORNAMENTAL TREES SHALL HAVE NO "V" CROTCHES AND SHALL BEGIN BRANCHING NO LOWER THAN 3' FEET ABOVE THE ROOT BALL. STREET AND BOULEVARD TREES SHALL BEGIN BRANCHING NO LOWER THAN 6' ABOVE PAVED SURFACE.
 - INSTALL PLANT MATERIAL AFTER FINAL GRADING AND CONSTRUCTION HAS BEEN COMPLETED IN THE IMMEDIATE AREA.
 - INSTALL PLANT MATERIALS PER PLANTING DETAILS.
 - SUBSTITUTION REQUESTS FOR PLANT MATERIAL TYPE & SIZE SHALL BE SUBMITTED TO THE LANDSCAPE ARCHITECT FOR CONSIDERATION PRIOR TO BIDDING. SUBSTITUTIONS AFTER BIDDING MUST BE APPROVED BY LANDSCAPE ARCHITECT AND ARE SUBJECT TO CONTRACT ADJUSTMENTS.
 - ADJUSTMENTS IN LOCATION OF PROPOSED PLANT MATERIALS MAY BE NEEDED IN FIELD. LANDSCAPE ARCHITECT MUST BE NOTIFIED PRIOR TO ADJUSTMENT OF PLANTS.

- FERTILIZE PLANT MATERIAL UPON INSTALLATION WITH DRIED BONE MEAL AND OTHER APPROVED FERTILIZER MIXED IN WITH THE PLANTING SOIL (PER THE MANUFACTURER'S INSTRUCTIONS) OR TREAT FOR SUMMER AND FALL INSTALLATION WITH AN APPLICATION OF GRANULAR 10-0-5 OF 12 OZ. PER 2.5" CALIPER TREE AND 6 OZ. PER SHRUB WITH AN ADDITIONAL APPLICATION OF 10-0-10 THE FOLLOWING SPRING IN THE TREE SAUCER.
 - INSTALL 18" DEPTH OF PLANTING SOIL IN AREAS RECEIVING GROUND COVER, PERENNIALS, AND ANNUALS. PLANTING SOIL SHALL CONSIST OF MNDOT 387-B MODIFIED TO CONTAIN A MAXIMUM OF 30% SAND, A PH OF 7.1 MAX, OR AS OTHERWISE SPECIFIED IN THE PROJECT SPECIFICATIONS MANUAL.
 - TREE WRAPPING MATERIAL SHALL BE TWO-WALLED PLASTIC SHEETING APPLIED FROM TRUNK FLARE TO FIRST BRANCH. WRAP SMOOTH-BARKED DECIDUOUS TREES PLANTED IN THE FALL PRIOR TO DECEMBER 1 AND REMOVE WRAPPING AFTER MAY 1.
 - APPLY PRE-EMERGENT HERBICIDE (PREEN OR APPROVED EQUAL) IN ANNUAL, PERENNIAL, AND SHRUB BEDS FOLLOWED BY SHREDDED HARDWOOD MULCH. REFER TO SPECIFICATIONS FOR ADDITIONAL INFORMATION REGARDING USE OF HERBICIDES.
- MULCHING**
- INSTALL 4" DEEP SHREDDED HARDWOOD MULCH RINGS AT CONIFEROUS & DECIDUOUS TREES WITH NO MULCH IN DIRECT CONTACT WITH TREE TRUNK.
 - INSTALL 3" DEEP SHREDDED HARDWOOD MULCH RINGS AT SHRUB PLANTING AREAS WITH NO MULCH IN DIRECT CONTACT WITH SHRUB STEMS.
 - INSTALL 3" DEEP FINELY SHREDDED MULCH IN PERENNIAL PLANTING BEDS. REMOVE ALL MULCH FROM STEMS OF PERENNIALS - PLANT STEMS SHOULD NOT BE IN DIRECT CONTACT WITH MULCH.
- WATERING**
- PLANTED MATERIALS SHALL BE WATERED BY TEMPORARY MEANS UNTIL PLANTS ARE ESTABLISHED.
 - TEMPORARY WATERING MEANS, METHODS, AND SCHEDULING SHALL BE THE CONTRACTOR'S RESPONSIBILITY. REMOVE TEMPORARY WATERING EQUIPMENT UPON PLANT ESTABLISHMENT.
- WARRANTY**
- WARRANTY NEW PLANT MATERIAL THROUGH [ONE] CALENDAR YEAR FROM THE DATE OF SUBSTANTIAL COMPLETION. NO PARTIAL ACCEPTANCE WILL BE CONSIDERED.
- TURF NOTES**
- SOD AREAS DISTURBED DUE TO GRADING UNLESS NOTED OTHERWISE.
 - WHERE SOD ABUTS PAVED SURFACES, FINISHED GRADE OF SOD/SEED SHALL BE HELD 1" BELOW SURFACE ELEVATION OF TRAIL, SLAB, CURB, ETC.
 - SOD SHALL BE LAID PARALLEL TO THE CONTOURS AND SHALL HAVE STAGGERED JOINTS. ON SLOPES STEEPER THAN 3:1 OR IN DRAINAGE SWALES, SOD SHALL BE STAKED SECURELY.
 - UNLESS NOTED OTHERWISE, THE APPROPRIATE DATES FOR SPRING SEED & SOD PLACEMENT IS FROM THE TIME GROUND HAS THAWED TO JUNE 15.
 - FALL SODDING IS ACCEPTABLE FROM AUGUST 15 TO NOVEMBER 1. FALL SEEDING IS ACCEPTABLE FROM AUGUST 15 TO SEPTEMBER 15. ADJUSTMENTS TO SOD/SEED PLANTING DATES MUST BE APPROVED IN WRITING BY THE LANDSCAPE ARCHITECT.
- IRRIGATION NOTES**
- CONTRACTOR SHALL BE RESPONSIBLE FOR PROVIDING AN IRRIGATION LAYOUT PLAN AND SPECIFICATION THAT MEETS THE REQUIREMENTS OF THE PROVIDED PERFORMANCE SPECIFICATION AS PART OF THE SCOPE OF WORK. SUBMIT LAYOUT PLAN AND SPECIFICATIONS FOR APPROVAL BY THE LANDSCAPE ARCHITECT PRIOR TO ORDER AND/OR CONSTRUCTION. IT SHALL BE THE CONTRACTOR'S RESPONSIBILITY TO ENSURE THAT SODDED/SEEDED AND PLANTED AREAS ARE IRRIGATED PROPERLY, INCLUDING THOSE AREAS DIRECTLY AROUND AND ABUTTING BUILDING FOUNDATION.
 - CONTRACTOR SHALL FIELD VERIFY WATER SUPPLY, VOLUME, PRESSURE AND LOCATION FOR SYSTEM TAP PRIOR TO SYSTEM DESIGN.
 - CONTRACTOR SHALL CONFIRM COMPLETE LIMITS OF IRRIGATION WITH LANDSCAPE ARCHITECT PRIOR TO SUPPLYING SHOP DRAWINGS.
 - CONTRACTOR SHALL CONTACT LANDSCAPE ARCHITECT FOR INSPECTION AND APPROVAL OF AREAS RECEIVING DRIP IRRIGATION PRIOR TO INSTALLATION OF MULCH.
 - CONTRACTOR SHALL PROVIDE THE OWNER AND LANDSCAPE ARCHITECT WITH AS-BUILT DRAWINGS, DETAILED SYSTEM OPERATION INSTRUCTIONS AND AN IRRIGATION SCHEDULE APPROPRIATE TO THE PROJECT SITE CONDITIONS AND PLANTED MATERIAL GROWTH REQUIREMENTS.
 - IRRIGATION SYSTEM SHALL BE DESIGNED SO THAT NO WATER DIRECTED TOWARDS OR IS IN CONTACT WITH VERTICAL HARDSCAPE AND/OR STRUCTURES.

PL202300178
PL2023-178

Plans approved
12/12/2024



Schafer
Richardson
700 American
BLOOMINGTON, MN

URBANWORKS
© URBANWORKS ARCHITECTURE LLC, 2023
901 NORTH THIRD STREET, SUITE 145, MINNEAPOLIS, MN 55401

CONSULTANT
DAMON FARBER
LANDSCAPE ARCHITECTS
310 South 4th Avenue, Suite 7050
Minneapolis, MN 55415
p. 612.332.7522

I hereby certify that this plan, specification, or report was prepared by me or under my direct supervision and that I am a duly Licensed Architect under the laws of the state of Minnesota.

SIGNED: Jesse Syntnyk
DATE: 4.11.2024
LICENSE #: 26970

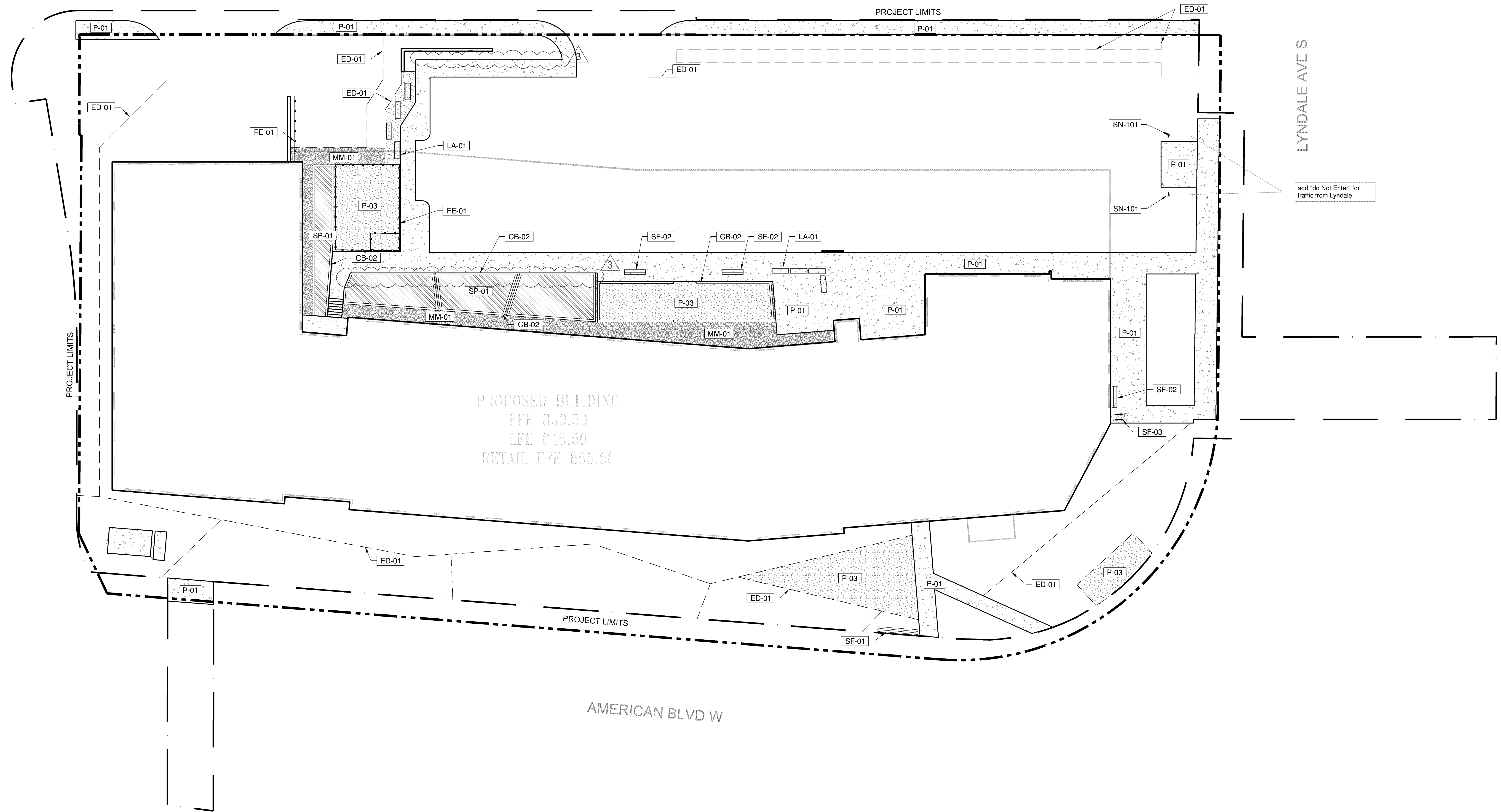
ADDENDUM #1
05.01.2024

REVISIONS
1 ADD-01 05/01/2024
3 PERMIT COMMENTS 1 05/20/2024

DATE: 5/01/2024
PROJECT #: 23-001
PHASE: ADD-#1
DRAWN BY: BMS
CHECKED BY: JS

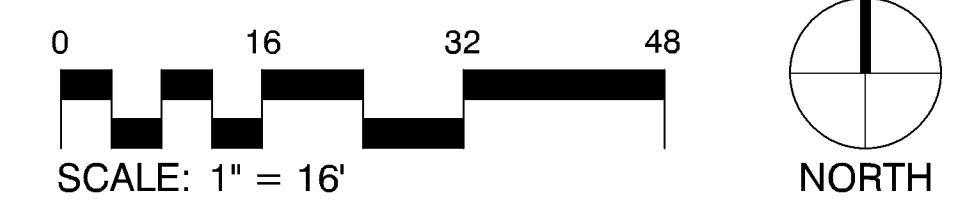
LANDSCAPE
SCHEDULES &
NOTES

L010

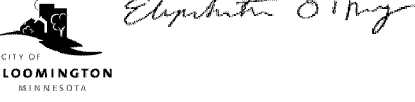


REFERENCE NOTES SCHEDULE

SYMBOL	CURB DESCRIPTION	QTY	DETAIL
CB-02	CONCRETE PLANTER CURB	501 LF	4/L500
SYMBOL	EDGING DESCRIPTION	QTY	DETAIL
ED-01	EDGING TYPE 1 - STEEL EDGER	959 LF	5/L500
SYMBOL	FENCE & GUARDRAIL DESCRIPTION	QTY	DETAIL
FE-01	FENCE TYPE 1 - CHAIN LINK - 4.5'	143 LF	7/L500
SYMBOL	LANDSCAPE AMENITY DESCRIPTION	QTY	DETAIL
LA-01	COMMUNITY GARDEN PLANTER	8	
SYMBOL	MINERAL MULCH DESCRIPTION	QTY	DETAIL
MM-01	MINERAL MULCH- ROCK MULCH	17.35 CY	
SYMBOL	PAVING DESCRIPTION	QTY	DETAIL
P-01	PAVING TYPE 1 - CONCRETE WALK	8,417 SF	
P-03	PAVING TYPE 3 - CRUSHED STONE	2,864 SF	6/L500
SYMBOL	SITE FURNITURE DESCRIPTION	QTY	DETAIL
SF-01	BENCH TYPE 1 - DOUBLE	1	8/L500
SF-02	BENCH TYPE 2 - SINGLE	3	8/L500
SF-03	BIKE RACK	2	9/L500
SYMBOL	SIGNAGE DESCRIPTION	QTY	DETAIL
SN-101	SIGN TYPE 1 - DO NOT ENTER SIGN	2	10/L500
SYMBOL	SOIL PROFILE DESCRIPTION	QTY	DETAIL
SP-01	SOIL TYPE 1 - GREEN ROOF SOIL	1,296 SF	



Plans approved
12/12/2024



Schafer Richardson
700 American
700 AMERICAN BLVD / BLOOMINGTON, MN

URBANWORKS
© URBANWORKS ARCHITECTURE LLC, 2023
901 NORTH THIRD STREET, SUITE 146, MINNEAPOLIS, MN 55401

CONSULTANT
DAMON FARBER LANDSCAPE ARCHITECTS
310 South 4th Avenue, Suite 7050
Minneapolis, MN 55415
p: 612.332.7522

I hereby certify that this plan, specification, or report was prepared by me or under my direct supervision and that I am a duly Licensed Architect under the laws of the state of Minnesota.

SIGNED: *Jesse Sytnykywicz*
DATE: 4.11.2024
LICENSE #: 26970

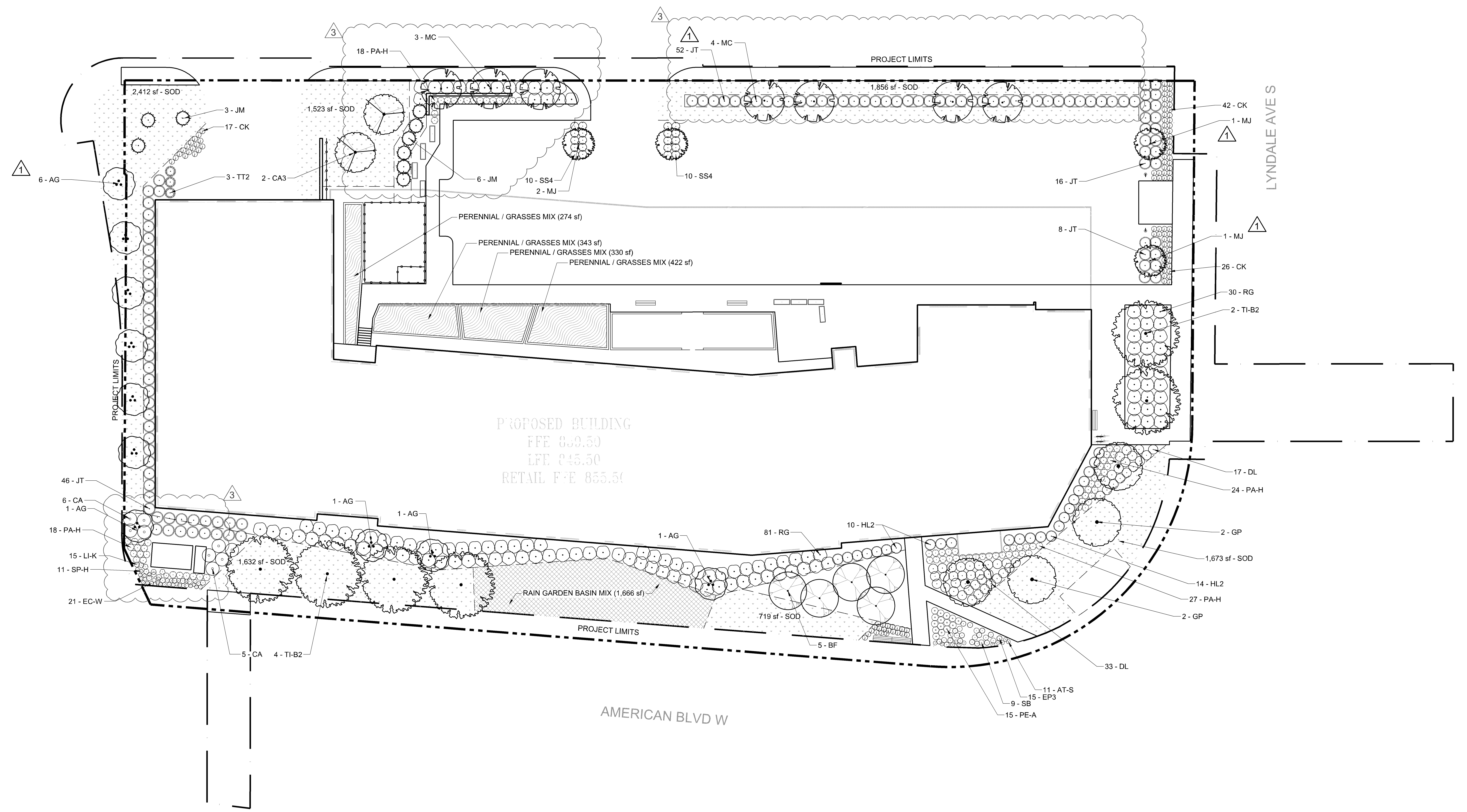
ADDENDUM #1
05.01.2024

REVISIONS
1 ADD-01 05/01/2024
3 PERMIT COMMENTS 1 05/20/2024

DATE: 5/01/2024
PROJECT #: 23-0001
PHASE: ADD-#1
DRAWN BY: BMS
CHECKED BY: JS

HARDSCAPE PLAN

L110



PLANT SCHEDULE

SYMBOL	CODE	QTY	BOTANICAL / COMMON NAME	SIZE	CONT.	NOTES
DECIDUOUS TREES						
	BF	5	BETULA PLATYPHYLLA 'FARGO' TM DAKOTA PINNACLE WHITE BIRCH	2" CAL.	B&B	SINGLE STEM
	GP	4	GINKGO BILOBA 'PRINCETON SENTRY' PRINCETON SENTRY MAIDENHAIR TREE	2.5" CAL.	B&B	NATURAL FORM, SINGLE LEADER
	TI-B2	6	TILIA AMERICANA 'BOULEVARD' BOULEVARD LINDEN	2.5" CAL.	B&B	
EVERGREEN TREES						
	JM	9	JUNIPERUS SCOPULORUM 'MEDORA' MEDORA JUNIPER	6' HT.	B&B	NATURAL FORM, SINGLE LEADER
ORNAMENTAL TREES						
	AG	10	AMELANCHIER X GRANDIFLORA 'AUTUMN BRILLIANCE' 'AUTUMN BRILLIANCE' SERVICEBERRY	8' HT. CLUMP	B&B	
	CA3	2	CORNUS ALTERNIFOLIA PAGODA DOGWOOD	2" CAL.	B&B	
	MC	7	MALUS X 'CORALCOLE' CORALBURST® CRABAPPLE	2" CAL.	B&B	
	MJ	4	MALUS X 'JEWELCOLE' RED JEWEL™ CRABAPPLE	2" CAL.	B&B	

DECIDUOUS SHRUBS

	CA	11	CORNUS SERICEA 'ALLEMAN'S COMPACT' DWARF RED TWIG DOGWOOD	#2	POT	SPACE 5'-0" O.C.
	DL	50	DIERVILLA LONICERA DWARF BUSH HONEYSUCKLE	#5	POT	SPACE 3'-6" O.C.
	HL2	24	HYDRANGEA PANICULATA 'LITTLE LIME' LITTLE LIME HYDRANGEA	#2	CONT.	SPACE 4'-0" O.C.
	RG	128	RHUS AROMATICA 'GRO-LOW' GRO-LOW FRAGRANT SUMAC	#5	POT	SPACE 5'-0" O.C.
	SS4	20	SORBARIA SORBIFOLIA 'SEM' SEM ASH LEAF SPIREA	#2	CONT.	SPACE 3'-0" O.C.

EVERGREEN SHRUBS

	JT	112	JUNIPERUS CHINENSIS 'MONLEP' MINT JULEP® CHINESE JUNIPER	#5	POT	SPACE 4'-6" O.C.
	TT2	3	TAXUS X MEDIA 'TAUNTONII' TAUNTON YEW	#2	POT	SPACE 4'-0" O.C.

GRASSES

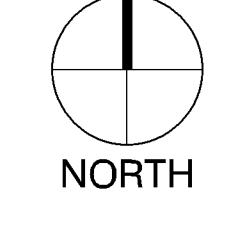
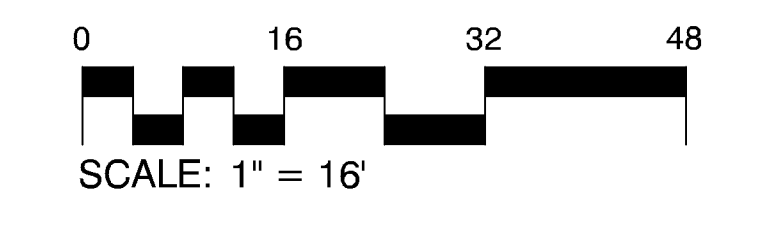
	CK	106	CALAMAGROSTIS X ACUTIFLORA 'KARL FOERSTER' FEATHER REED GRASS	#1	POT	SPACE 2'-0" O.C.
	PA-H	87	PANICUM VIRGATUM 'HEAVY METAL' HEAVY METAL SWITCH GRASS	#1	POT	SPACE 2'-6" O.C.
	SB	9	SCHIZACHYRIUM SCOPARIUM 'BLUE HEAVEN' BLUE HEAVEN LITTLE BLUESTEM	#1	CONT.	SPACE 2'-0" O.C.
	SP-H	6	SPOROBOLUS HETEROLEPIS PRAIRIE DROPSEED	#1	POT	SPACE 1'-6" O.C.

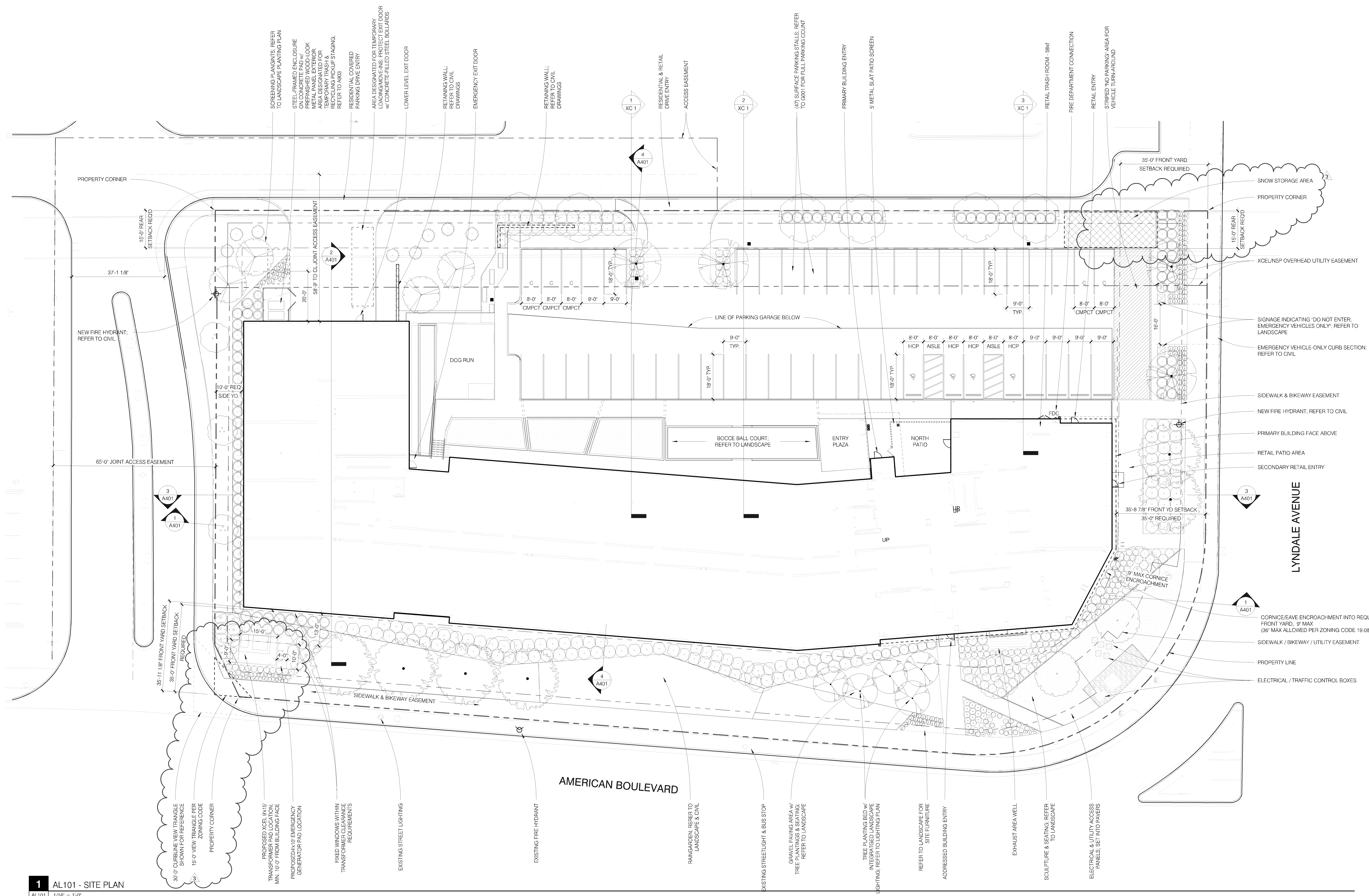
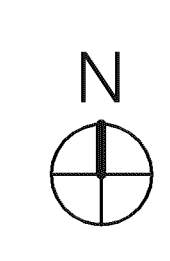
PERENNIALS

	AT-S	11	ALLIUM TANGUTICUM 'SUMMER BEAUTY' SUMMER BEAUTY GLOBE LILY	#1	POT	SPACE 1'-6" O.C.
	EP3	15	ECHINACEA PALLIDA PALE PURPLE CONEFLOWER	#1	POT	SPACE 2'-0" O.C.
	EC-W	21	ECHINACEA PURPUREA 'WHITE SWAN' WHITE SWAN CONEFLOWER	#1	POT	SPACE 1'-6" O.C.
	LI-K	6	LIATRIS SPICATA 'KOBOLD' KOBOLD BLAZING STAR	#1	POT	SPACE 2'-0" O.C.
	PE-A	15	PEROVSKIA ATRIPLICIFOLIA 'BLUE JEAN BABY' BLUE JEAN BABY RUSSIAN SAGE	#1	POT	SPACE 3'-0" O.C.

GROUND COVERS

	SOD	9,816 SF	SOD	
	EC	1,666 SF	RAIN GARDEN BASIN MIX	
	LG	87	ELYMUS CANADENSIS CANADA WILD RYE	PLUG
	PV	87	LIATRIS PYCNOSTACHYA PRAIRIE GAYFEATHER	PLUG
	RH	87	PANICUM VIRGATUM SWITCH GRASS	PLUG
	SR	43	RUDBECKIA HIRTA BLACK-EYED SUSAN	PLUG
	AP	107	SOLIDAGO RIGIDA STIFF GOLDENROD	
	CO	107	PERENNIAL / GRASSES MIX	
	CP	71	ASTILBE CHINENSIS 'PURPURKERZE' PURPLE CANDLES CHINESE ASTILBE	#1
	TS	71	CAREX MUSKINGUMENSIS 'OEHME' OEHME PALM SEDGE	#1
			CAREX PENNSYLVANICA PENNSYLVANIA SEDGE	#1
			TIARELLA X 'SUGAR AND SPICE' SUGAR AND SPICE FOAMFLOWER	#1





1 AL101 - SITE PLAN
AL101 | 1/16" = 1'-0"