

PL201600213

GENERAL ABBREVIATIONS

AB	ANCHOR BOLT
ABDN	ABANDONED
AC	ASPHALT CONCRETE
ACR	ADHESIVE CLARIFIER RETURN
ACS	ADHESIVE CLARIFIER SUPPLY
ADDL	ADDITIONAL
A/E	ARCHITECT/ENGINEER
AFF	ABOVE FINISHED FLOOR
AGGR	AGGREGATE
AL/ALUM	ALUMINUM
ALT	ALTERNATE
ANC	ANCHOR
APPROX	APPROXIMATE
AR	AIR RELEASE STRUCTURE
ARV	AIR RELEASE VALVE
BF	BLIND FLANGE
BHP	BRAKE HORSEPOWER
BITUM	BITUMINOUS
BLDG	BUILDING
BLK	BLOCK
BLKG	BLOCKING
BOD	BOTTOM OF DUCT BIOLOGICAL OXYGEN DEMAND (FIVE DAY)
BOT	BOTTOM
BUR	BUILT UP ROOF
B&S	BELL AND SPIGOT
CAR	COUNCIL'S AUTHORIZED REPRESENTATIVE
CB	CATCH BASIN
CBOD	CARBONACEOUS BIOLOGICAL OXYGEN DEMAND (FIVE DAY)
CF	CUBIC FEET
CFH	CUBIC FEET PER HOUR
CFM	CUBIC FEET PER MINUTE
CFS	CUBIC FEET PER SECOND
CIP	CAST IRON PIPE
CIPP	CURED IN PLACE PIPE
CIU	CHEMICAL INDUCTION
CJ	CONSTRUCTION JOINT
CL	CENTERLINE
CL	CLEARANCE, CENTERLINE
CLR	CLEAR
CMU	CONCRETE MASONRY UNIT, CONCRETE BLOCK
CO	CLEAN OUT
CONC	CONCRETE
CONN	CONNECTION
CONT	CONTINUED, CONTINUOUS
CPU	COMPUTER
CPVC	CHLORINATED POLYVINYL CHLORIDE
D	DAY
DEG	DEGREE
DEMO	DEMOLITION, DEMOLISH
DET	DETAIL, DETECTOR
DI	DUCTILE IRON
DIA	DIAMETER
DIP	DUCTILE IRON PIPE
DIS	DISCONNECT
DIST	DISTRIBUTION, DISTANCE
DNH	STORM MAINTENANCE HOLE
DN	DOWN
DWG	DRAWING
E	EASTING
ECC	ECCENTRIC
EF	EACH FACE
EJ	EXPANSION JOINT
EL	ELEVATION
EMBD	EMBEDDED
EQ	EQUAL
EQUIP	EQUIPMENT
ESMT	EASEMENT
ESVCP	EXTRA STRONG VITRIFIED CLAY
EW	EACH WAY
EWEF	EACH WAY EACH FACE
EXP	EXPANSION, PIPE EXPANSION
EXP JT	EXPANSION JOINT
EX	EXISTING
EXT	EXTERIOR, EXTRACTOR
EXTN	EXTENSION
FD	FLOOR DRAIN
FE	FLOW METER
FES	FLARED END SECTION
F/F	FACE TO FACE
FG	FINISHED GRADE
FIN	FINISH, FINISHED
FIN FLR	FINISHED FLOOR
FLR	FLOOR
FM	FORCE MAIN
FO	FIBER OPTIC
FRP	FIBERGLASS REINFORCED PLASTIC
FS	FLOW SENSOR
FSU	FLAT SIDE UP
FT	FOOT, FEET
GA	GAUGE
GALV	GALVANIZED
GPD	GALLONS PER DAY
GPM	GALLONS PER MINUTE
GRTG	GRATING
GSP	GALVANIZED STEEL PIPE
GT	GROUT, GREASE TRAP
GYP BD	GYP SUM BOARD
H	HEIGHT
HB	HOSE BIB
HDD	HORIZONTAL DIRECTIONAL DRILL
HM	HOLLOW METAL
HNDRL	HANDRAIL
HORIZ	HORIZONTAL
HP	HIGH PRESSURE, HORSEPOWER
HR	HOUR
ID	INSIDE DIAMETER, IDENTIFICATION
IN	INCH, INCHES
INSUL	INSULATION
INV	INVERT
IPS	IRON PIPE SIZE
IS	ISOLATION STRUCTURE
JT	JOINT
K	KIP (1000 POUNDS)
KLF	KIPS PER LINEAR FOOT
KPL	KICK PLATE
KSF	KIPS PER SQUARE FOOT
KSI	KIPS PER SQUARE INCH
KV	TIME (k) CONTROLLED VALVE
LB	POUND
LB/D	POUNDS PER DAY
LB/HR	POUNDS PER HOUR
LCV	LEVEL CONTROL VALVE
LF	LINEAR FOOT
LS	LUMP SUM
MAX	MAXIMUM
MCU	MASTER CONTROL UNIT
MECH	MECHANICAL
MGD	MILLION GALLONS PER DAY
MG/L	MILLIGRAMS PER LITER
MH	MAINTENANCE HOLE
MIN	MINIMUM, MINUTE
MISC	MISCELLANEOUS
MJ	MECHANICAL JOINT
MLSS	MIXED LIQUOR SUSPENDED SOLIDS
MOD	MODIFIED, MODULE, MODULAR, MOTOR OPERATED
MSS	DAMPENER MANUFACTURERS' STANDARDIZATION SOCIETY, MOTOR START SWITCH
N	NORTHING
NA	NOT APPLICABLE OR N/A
NC	NORMALLY CLOSED
NH ₃ -N	AMMONIA NITROGEN
NIC	NOT IN CONTRACT
NO	NUMBER, NORMALLY OPEN
NOM	NOMINAL
NTS	NOT SCALE
OC	ON CENTER
OD	OUTSIDE DIAMETER
OFS	OFFSET
OPNG	OPENING
OSHA	OCCUPATIONAL SAFETY AND HEALTH ACT
PB	PULL BOX, PUSH BUTTON (ELECTRICAL)
PBD	PANELBOARD, PARTICLE BOARD
PCF	POUNDS PER CUBIC FOOT
PERF	PERFORATED
PL	PLATE
PLC	PROGRAMMABLE LOGIC CONTROLLER
PLF	POUNDS PER LINEAR FOOT
PNL	PANEL (CONTROL, PURGE, CABINET, CONSOLE, ETC PANELBOARD)
PREFAB	PREFABRICATED (REPLACE OR ADD)

FLR	FLOOR
FM	FORCE MAIN
FO	FIBER OPTIC
FRP	FIBERGLASS REINFORCED PLASTIC
FS	FLOW SENSOR
FSU	FLAT SIDE UP
FT	FOOT, FEET
GA	GAUGE
GALV	GALVANIZED
GPD	GALLONS PER DAY
GPM	GALLONS PER MINUTE
GRTG	GRATING
GSP	GALVANIZED STEEL PIPE
GT	GROUT, GREASE TRAP
GYP BD	GYP SUM BOARD
H	HEIGHT
HB	HOSE BIB
HDD	HORIZONTAL DIRECTIONAL DRILL
HM	HOLLOW METAL
HNDRL	HANDRAIL
HORIZ	HORIZONTAL
HP	HIGH PRESSURE, HORSEPOWER
HR	HOUR
ID	INSIDE DIAMETER, IDENTIFICATION
IN	INCH, INCHES
INSUL	INSULATION
INV	INVERT
IPS	IRON PIPE SIZE
IS	ISOLATION STRUCTURE
JT	JOINT
K	KIP (1000 POUNDS)
KLF	KIPS PER LINEAR FOOT
KPL	KICK PLATE
KSF	KIPS PER SQUARE FOOT
KSI	KIPS PER SQUARE INCH
KV	TIME (k) CONTROLLED VALVE
LB	POUND
LB/D	POUNDS PER DAY
LB/HR	POUNDS PER HOUR
LCV	LEVEL CONTROL VALVE
LF	LINEAR FOOT
LS	LUMP SUM
MAX	MAXIMUM
MCU	MASTER CONTROL UNIT
MECH	MECHANICAL
MGD	MILLION GALLONS PER DAY
MG/L	MILLIGRAMS PER LITER
MH	MAINTENANCE HOLE
MIN	MINIMUM, MINUTE
MISC	MISCELLANEOUS
MJ	MECHANICAL JOINT
MLSS	MIXED LIQUOR SUSPENDED SOLIDS
MOD	MODIFIED, MODULE, MODULAR, MOTOR OPERATED
MSS	DAMPENER MANUFACTURERS' STANDARDIZATION SOCIETY, MOTOR START SWITCH
N	NORTHING
NA	NOT APPLICABLE OR N/A
NC	NORMALLY CLOSED
NH ₃ -N	AMMONIA NITROGEN
NIC	NOT IN CONTRACT
NO	NUMBER, NORMALLY OPEN
NOM	NOMINAL
NTS	NOT SCALE
OC	ON CENTER
OD	OUTSIDE DIAMETER
OFS	OFFSET
OPNG	OPENING
OSHA	OCCUPATIONAL SAFETY AND HEALTH ACT
PB	PULL BOX, PUSH BUTTON (ELECTRICAL)
PBD	PANELBOARD, PARTICLE BOARD
PCF	POUNDS PER CUBIC FOOT
PERF	PERFORATED
PL	PLATE
PLC	PROGRAMMABLE LOGIC CONTROLLER
PLF	POUNDS PER LINEAR FOOT
PNL	PANEL (CONTROL, PURGE, CABINET, CONSOLE, ETC PANELBOARD)
PREFAB	PREFABRICATED (REPLACE OR ADD)

PRV	PRESSURE RELIEF VALVE, PRESSURE REDUCING VALVE, POWER ROOF VENTILATOR
PS	PRESSURE SWITCH, PRESSURE SENSOR
PSF	POUNDS PER SQUARE FOOT
PSI	POUNDS PER SQUARE INCH
PSIG	POUNDS PER SQUARE INCH GAGE
PVC	POLYVINYL CHLORIDE
PV	PLUG VALVE, PAVED
RAD	RADIUS
RPC	REINFORCED CONCRETE PIPE
RD	ROOF DRAIN
RED	REDUCER
REINF	REINFORCE, REINFORCED, REINFORCING REINFORCEMENT
REQD	REQUIRED
REV	REVISE/REVISION
RO	ROUGH OPENING
ROF	RATE OF FLOW
RND	ROUND
ROW	RIGHT OF WAY
RST	RESET
RTD	RESISTANCE TEMPERATURE DETECTOR
SAN	SANITARY SEWER
SECT	SECTION
SER	STRUCTURAL ENGINEER OF RECORD
SF	SQUARE FEET
SIM	SIMILAR
SL	SLOPE, SLIDE, SLIDING
SMH	SANITARY MAINTENANCE HOLE
SPEC	SPECIFICATION
SPRT	SUPPORT
SP/SPA	SPACE, SPACES, SPACING
SQ FT	SQUARE FEET
SQ IN	SQUARE INCHES
SRV	SURGE RELIEF VALVE
SST	STAINLESS STEEL
STA	STATION
STD	STANDARD
STL	STEEL
STM	STORM SEWER
STRUCT	STRUCTURAL
SUBST	SUBSTATION (UNIT, SECONDARY, ETC)
T	TREAD, TANK, TEE, TUNNEL, THERMOSTAT
TB	TOP OF BEAM, TERMINAL BOX, BOARD, OR CABINET (ELECTRICAL, INSTRUMENTATION, TELEPHONE)
T&B	TOP AND BOTTOM
TC	TOP OF CONCRETE
TEMP	TEMPERATURE, TEMPORARY
TEL	TELEPHONE
TF	TOP OF FOOTING
THD	THREAD, THREADED
THRU	THROUGH
TJ	TOP OF JOIST
TKN	TOTAL KJELDAHL NITROGEN
TN	TOTAL NITROGEN
TO	TOP OF
TOW	TOP OF WALL
TP	TANGENT POINT, TOTAL PHOSPHOROUS, TOP OF PAVEMENT, TOTAL PRESSURE
TRTD	TREATED
TSL	TOP OF SLAB
TST	TOP OF STEEL
TYP	TYPICAL
UGND	UNDERGROUND
UNO	UNLESS NOTED OTHERWISE
VERT	VERTICAL
VOL	VOLUME
VS	VARIABLE SPEED
VTR	VENT THROUGH ROOF
W	WIDTH, WALL, WITH, WEST, WIRE
W/	WITH
WD	WOOD, WIDE, WIDTH
WH	WALL HUNG, WALL HYDRANT, WATT-HOUR
WHTR	WATER HEATER
WM	WATER MAIN
W/O	WITHOUT
WR	WATER RESISTANT
WWF	WELDED WIRE FABRIC
YH	YARD HYDRANT

EQUIPMENT IDENTIFICATION SYSTEM

EQUIPMENT - PROPOSED AREAS

DIS-NAOCL-P01

DIS = AREA CODE
NAOCL = PROCESS STREAM
P = EQUIPMENT PREFIX
01 = EQUIPMENT NUMBER

EQUIPMENT - EXISTING NUMBERING RETAINED

PSP-1

PSP = EQUIPMENT PREFIX
1 = EQUIPMENT NUMBER

VALVES - PROPOSED

DIS-NAOCL-V01

DIS = AREA CODE
NAOCL = PROCESS STREAM
V = VALVE
01 = VALVE NUMBER

VALVES - EXISTING NUMBERING RETAINED

V100

V = VALVE
100 = VALVE NUMBER

EQUIPMENT PREFIXES - NEW

ACC	AIR CONDITIONING CONDENSER
AHU	AIR HANDLING UNIT
BL	BLOWER
BS	BAR SCREEN
CARD	CARD READER
CIU	CHEMICAL INDUCTION UNIT
COL	COLLECTOR MECHANISM
CP	AIR COMPRESSOR
EF	EXHAUST FAN
F	FAN
GATE	ARM GATE
GC	GRIT CLASSIFIER
GR	GRINDER
GS	GRIT CYCLONE
HC	HOSE CABINET
HEX	HEAT EXCHANGER
HST	HOIST
HWB	BOILER
MX	MIXER
OCU	ODOR CONTROL UNIT
ORD	ODOR SCRUBBER
P	PUMP
REC	RECEIVER
SCALE	WEIGH SCALE
SCG	SCUM GRINDER
SCP	SCUM PUMP
SG	SLUICE GATE
SIGN	SIGNAGE
SLG	SLIDE GATE
SP	SUMP PUMP
ST	STORAGE TANK
STR	STRAINER
TWH	TANKLESS WATER HEATER
VES	VESSEL
WC	WASHER / COMPACTOR
WH	WATER HEATER

DISCIPLINE IDENTIFIER

IDENTIFICATION LETTER	DISCIPLINE	IDENTIFICATION LETTER	DISCIPLINE
G	GENERAL	D	PROCESS
D	DEMOLITION	M	MECHANICAL (HVAC)
C	CIVIL	P	PLUMBING
A	ARCHITECTURAL	E	ELECTRICAL
S	STRUCTURAL	I	INSTRUMENTATION & CONTROL

GENERAL NOTES:

1. SCREENED (LIGHT) DELINEATION SHOWN ON SHEETS DENOTES FACILITIES. SCREENED EXISTING FACILITIES INFORMATION TAKEN FROM PREVIOUS CONSTRUCTION SHEETS AND FIELD SURVEYS, IS FOR INFORMATION ONLY, AND SHALL BE FIELD VERIFIED BY THE CONTRACTOR PRIOR TO ORDERING OF MATERIALS AND BEGINNING CONSTRUCTION. NO (BOLD) DELINEATION IS PROPOSED WORK TO BE COMPLETED UNDER CONTRACT.

EQUIPMENT PREFIXES - EXISTING

BL	BLOWER
BLR	BOILER
DW	DE-WATERING WELL
EF	EXHAUST FAN
EF	PLANT WATER PUMPS
F	FAN
GS	GRIT CLASSIFIER
GC	GRIT CYCLONE
HRU	HEAT RECOVERY UNIT
MAU	MAKE-UP AIR UNIT
MW	MONITORING WELL
PC	PRIMARY CLARIFIER
PSP	PRIMARY SLUDGE PUMP
QC	COMPRESSOR
RASP	RETURN SLUDGE PUMP
SC	SECONDARY CLARIFIER
SCP	SCUM PUMP
SGG	SCUM GRINDER
SG	SLUICE GATE
SE	SEWAGE EJECTOR
SP	SCREW PUMP
STWP	DRAINAGE PUMP
TSP	THICKENED SLUDGE PUMP
WASP	WASTE SLUDGE PUMP
WWCH	CHILLER

PIPING MATERIALS

CCF	CENTRIFUGALLY CAST FIBERGLASS MORTAR PIPE
CIP	CAST IRON PIPE, CAST IN PLACE
CISP	CAST IRON SOIL PIPE
DIP	DUCTILE IRON PIPE
RCP	REINFORCED CONCRETE PIPE
PVC	POLYVINYL CHLORIDE PIPE
HDPE	HIGH DENSITY POLYETHYLENE PIPE
STL	STEEL PIPE
VCP	VITRIFIED CLAY PIPE
BV	BALL VALVE
COMP JT	COMPRESSION JOINT
CV	CHECK VALVE
EXP JT	EXPANSION JOINT
FCA	FLANGED COUPLING ADAPTER
FH	FIRE HYDRANT
FS	FLOOR STAND
GV	GATE VALVE
MJ	MECHANICAL JOINT
PE	PLAIN END
POJ	PUSH ON JOINT
PV	PLUG VALVE
RJ	RESTRAINED JOINT
VB	VALVE BOX
VC	VICTAULIC COUPLING
WAP	WALL PIPE
WSV	WALL SLEEVE

O:\2014\0006 DGCAD\0004\0004\0004\0004.DWG

PLOTTED: 1/23/2016 2:28:23 PM

MODIFIED: 1/14/2016 4:12:15 PM

**PRELIMINARY
NOT FOR CONSTRUCTION**

DESIGNED	ARS
DRAWN	JJC
CHECKED	KJA
TYPED	XXXXX
DATE	1/23/2016
PROJECT	808400
FILE NAME	GI0004



BLOOMINGTON L55

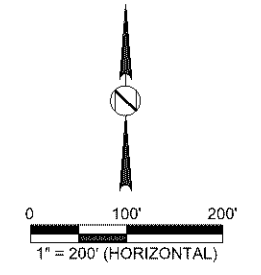
ABBREVIATIONS

GI04

--- OF TS



PIPE LEGEND:
 - - - - - NEW/REPLACED FM PIPE
 _____ SLIP LINED EX FM PIPE



O:\2014\0066 02\CAD\0084\001\SHEETS\GI0007.DWG
 PLOTTED: 1/23/2016 12:29:27 PM
 MODIFIED: 1/14/2016 5:19:41 PM

PRELIMINARY NOT FOR CONSTRUCTION			
NO	DATE	BY	REVISIONS

DESIGNED: JMS
 DRAWN: JJC
 CHECKED: ARS

DATE: XXXX/16 REG NO: 52793

HEREBY CERTIFY THAT THIS PLAN, SPECIFICATION, OR REPORT WAS PREPARED BY ME OR UNDER MY DIRECT SUPERVISION AND THAT I AM A DULY LICENSED PROFESSIONAL ENGINEER UNDER THE LAWS OF THE STATE OF MINNESOTA.

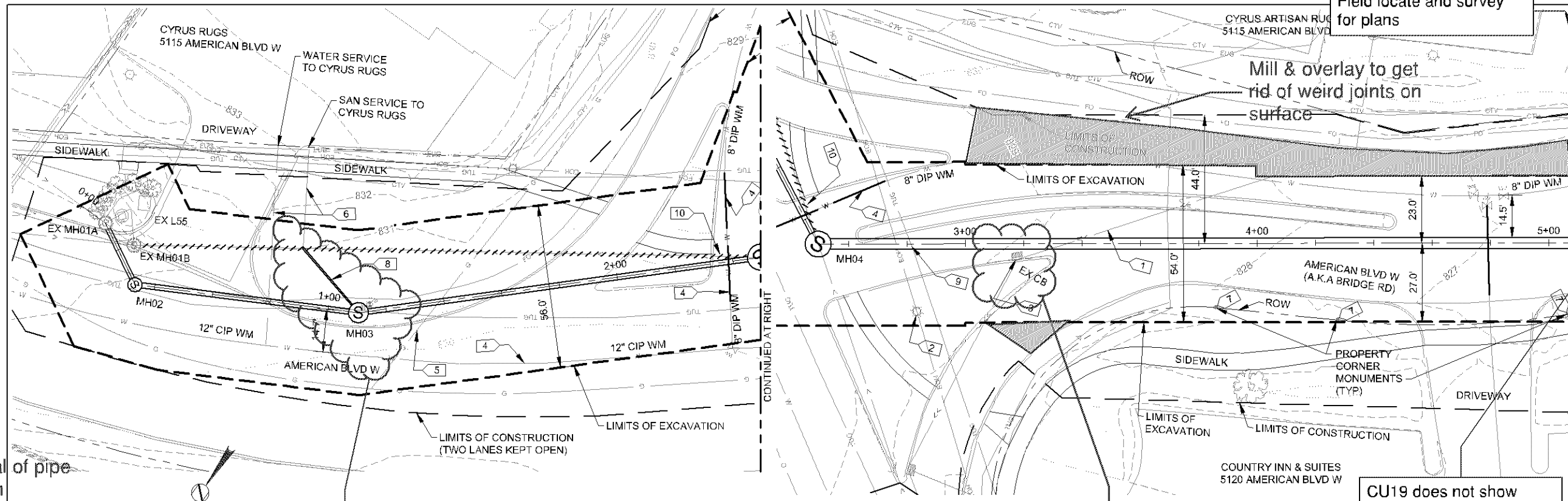
SIGNATURE: _____
 TYPED OR PRINTED NAME: ALISON R. SUMPTION

HRGreen

PROJECT: 808400
 FILE NAME: GI0007

BLOOMINGTON L55
 PROJECT PHASING PLAN

GI07
 --- OF TS



GENERAL NOTES:

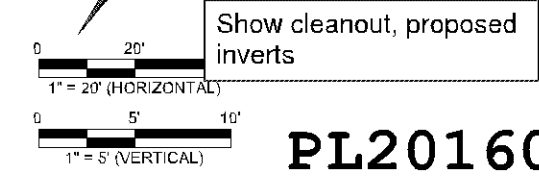
- PIPE LENGTHS NOTED IN PROFILE AS "LF" ARE MEASURED FROM CENTER OF MH TO CENTER OF MH (TYP).
- SAN & WATER SERVICES TO CYRUS RUGS HAVE NOT BEEN FIELD LOCATED & ARE SHOWN HERE ACCORDING TO CITY PLANS. CONTRACTOR VERIFY.
- LOCATE SILT FENCE WITHIN LIMITS OF CONSTRUCTION.

Show location of erosion control items.

KEYNOTES:

- REMOVE, & REPLACE EX RCP STM PIPE WITHIN EXCAVATION LIMITS.
- REMOVE, SALVAGE, & REINSTALL LIGHT POLE. REMOVE, & REPLACE CB.
- SEE CU19 & CU20 FOR WM REPLACEMENT. SUPPORT & PROTECT EX GAS LINE.
- SAN & WATER SERVICES TO CYRUS RUGS HAVE NOT BEEN FIELD LOCATED & ARE SHOWN HERE ACCORDING TO CITY PLANS. CONTRACTOR VERIFY.
- LOCATE PROPERTY CORNER MONUMENTS & REPLACE ANY DISTURBED BY CONSTRUCTION.
- CONNECT EXISTING SERVICE TO MH03. 6\"/>

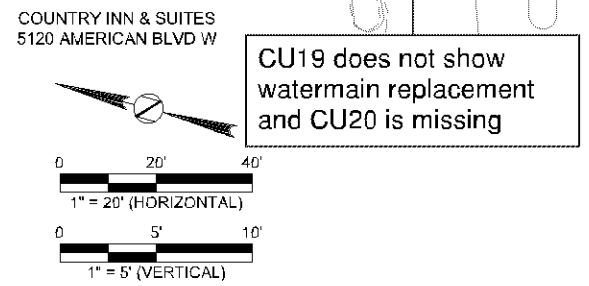
Removal of pipe between EXMH01A and EXMH01B not shown on plan. Repair work for EXMH01 not called out.



PL201600213

START STRUCTURE	MATERIAL	STIFFNESS CLASS	END STRUCTURE
EX MH01	RPMP	SN 72	MH02
MH02	RPMP	SN 72	MH03
MH03	RPMP	SN 72	MH04
MH04	RPMP	SN 72	MH05

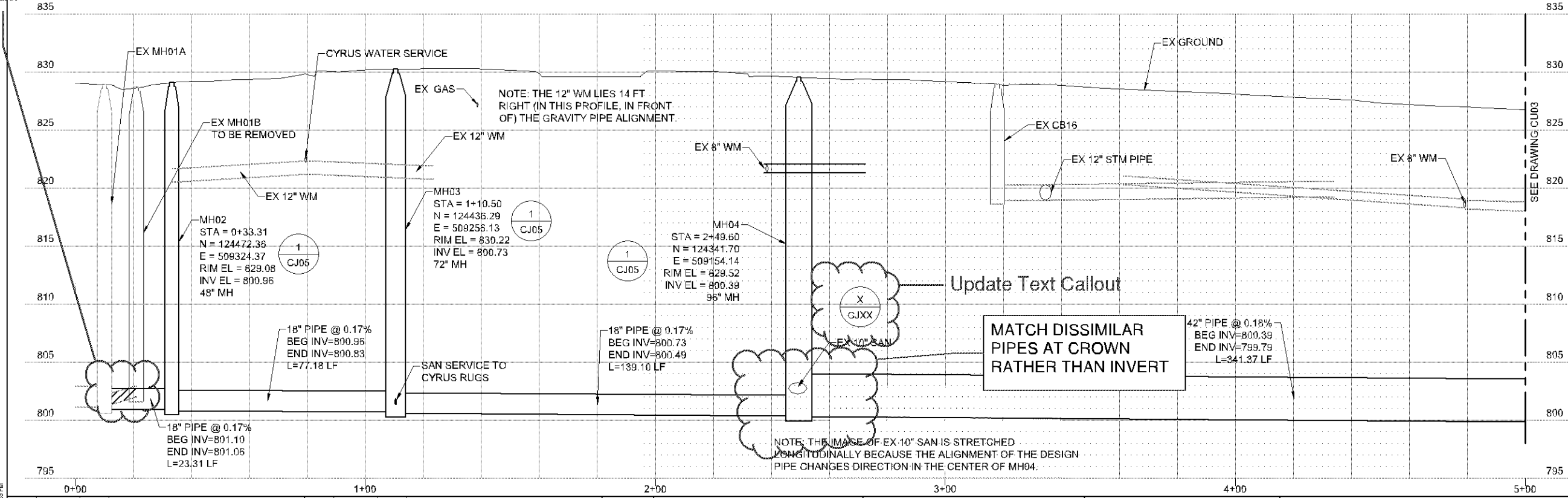
Include number 16 in EX CB label so it can be related to profile below



CU19 does not show watermain replacement and CU20 is missing

Clarify plans to clearly show water main to be removed, reinstalled and replaced. How is replaced watermain to be disinfected, tested and flushed?

Construction plans should show ROW lines and permanent and temporary easements with linetypes consistent with Legend.

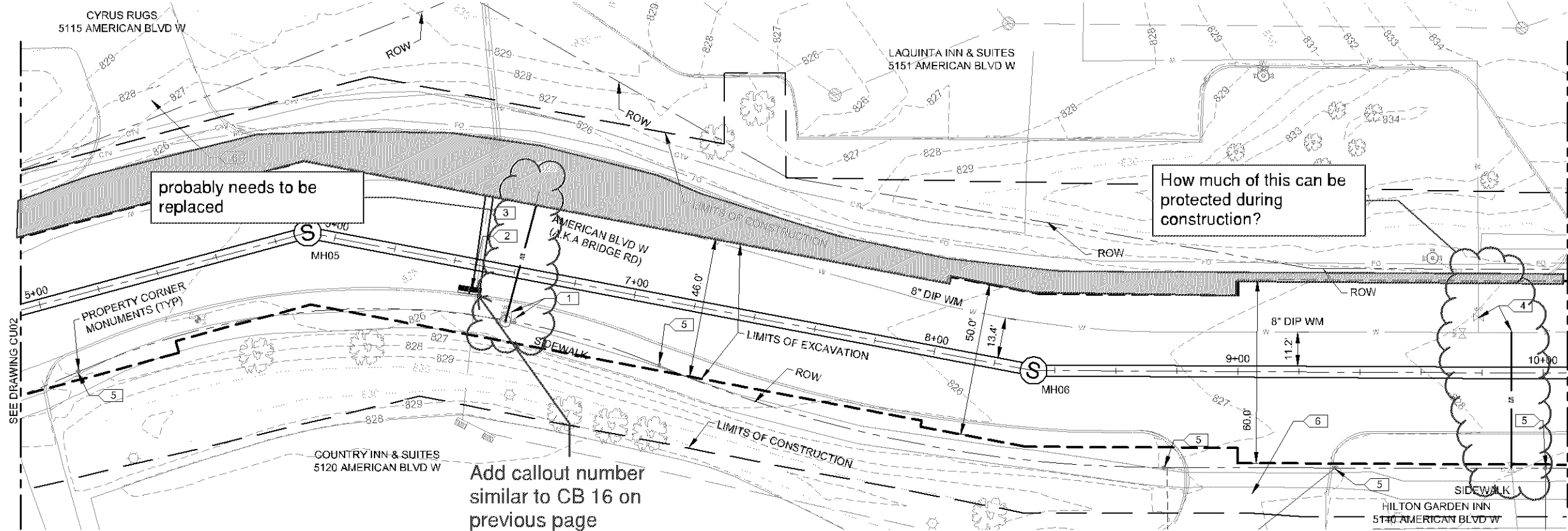


MATCH DISSIMILAR PIPES AT CROWN RATHER THAN INVERT

NOTE: THE IMAGE OF EX 10\"/>

O:\2014\0066 D\CAD\RD\RD\SHSHEETS\CU002.DWG
 PLOTTED: 1/23/2016 2:31:02 PM
 MODIFIED: 1/21/2016 5:33:33 PM

PRELIMINARY NOT FOR CONSTRUCTION				DESIGNED: ARS DRAWN: JJC CHECKED: KJA DATE: XX00X 16 REVISION: 52793		PROJECT: 808400 FILENAME: CU0002	BLOOMINGTON L55 GRAVITY PIPE PLAN & PROFILE STA 00+00 TO 5+00	CU02
REVISIONS NO. DATE BY REVISIONS		REVISIONS NO. DATE BY REVISIONS		TYPED AND PLOTTED BY: ALISON R. SUNPTON DATE: XX00X 16 REVISION: 52793				--- OF TS



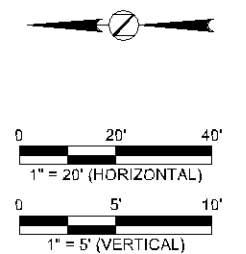
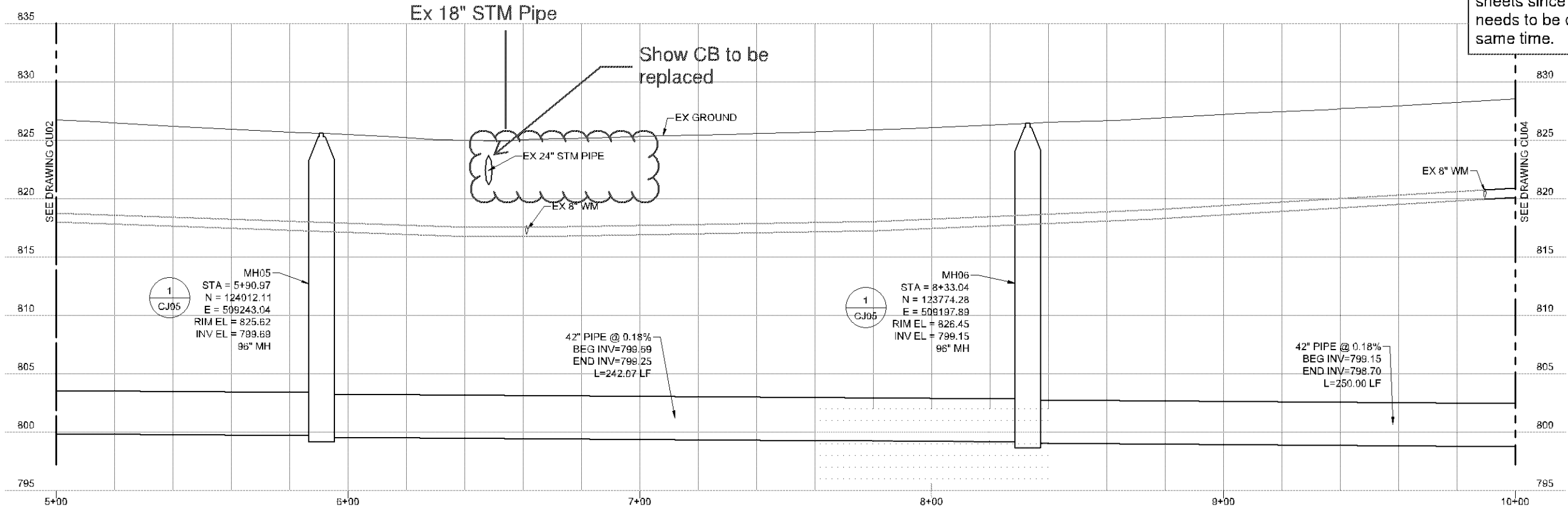
- GENERAL NOTES:**
- SAN & WATER SERVICES TO CYRUS RUGS HAVE NOT BEEN FIELD LOCATED & ARE SHOWN HERE ACCORDING TO CITY PLANS. CONTRACTOR VERIFY.
 - LOCATE SILT FENCE WITHIN LIMITS OF CONSTRUCTION.
- KEYNOTES:**
- PROTECT HYDRANT & WATER VALVE.
 - REMOVE & REPLACE CB.
 - REMOVE AND REPLACE 24" STM PIPE WITHIN EXCAVATION LIMITS.
 - SEE CUTS FOR WM DEMO.
 - LOCATE PROPERTY CORNER MONUMENTS & REPLACE IF DISTURBED BY CONSTRUCTION.
 - PROTECT DRIVEWAY.

Existing 18" RCP Pipe and 12" Private RCP Pipe behind Dual CBs.

PL201600213

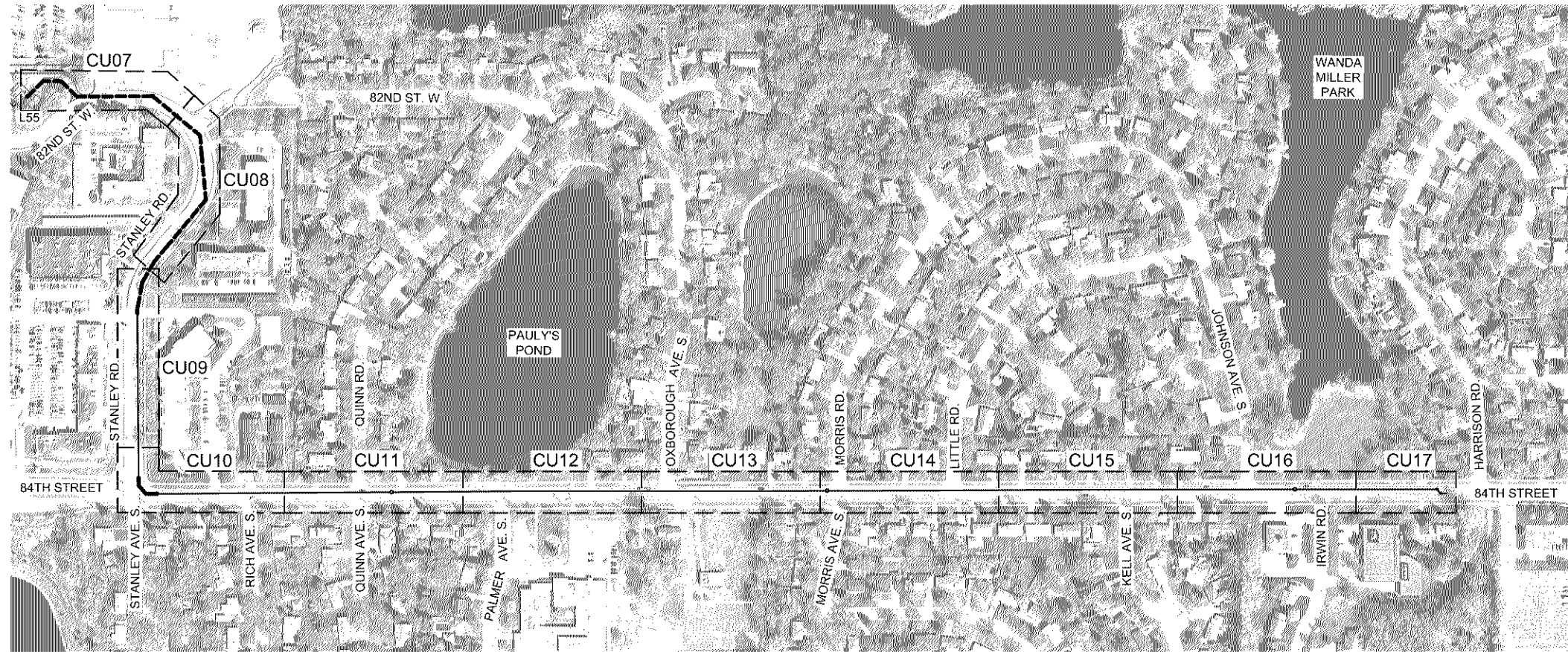
START STRUCTURE	START STATION	MATERIAL	STIFFNESS CLASS	END STRUCTURE	END STATION
MH05	5+90.97	RPMP	SN 72	MH06	8+33.04
MH06	8+33.04	RPMP	SN 72	MH07	10+83.04

Not shown as referenced. Water main removal and replacement should probably be on these sheets since the work needs to be done at the same time.

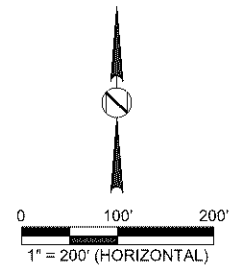


O:\2014\0006 D\CAD\RD\400\SHSHEETS\CU0003.DWG
 PLOTTED: 1/23/2016 2:31:55 PM
 MODIFIED: 1/21/2016 5:32:52 PM

PRELIMINARY NOT FOR CONSTRUCTION				DESIGNED: ARS DRAWN: JJC CHECKED: KJA DATE: XX00X 16 REVISED: 52793		PROJECT: 808400 FILENAME: CU0003	BLOOMINGTON L55 GRAVITY PIPE PLAN & PROFILE STA 5+00 TO 10+00	CU03 --- OF TS
REVISIONS NO. DATE BY REVISIONS		REVISIONS NO. DATE BY REVISIONS						



PIPE LEGEND:
 - - - - - NEW/REPLACED FM PIPE
 _____ SLIP LINED EX FM PIPE



O:\2014\0086 02\CAD\8084\001\SHEETS\CU0005.DWG
 PLOTTED: 1/23/2016 12:33:08 PM
 MODIFIED: 1/14/2016 5:22:03 PM

PRELIMINARY NOT FOR CONSTRUCTION			
NO	DATE	BY	REMARKS

DESIGNED: JMS
 DRAWN: JJC
 CHECKED: ARS

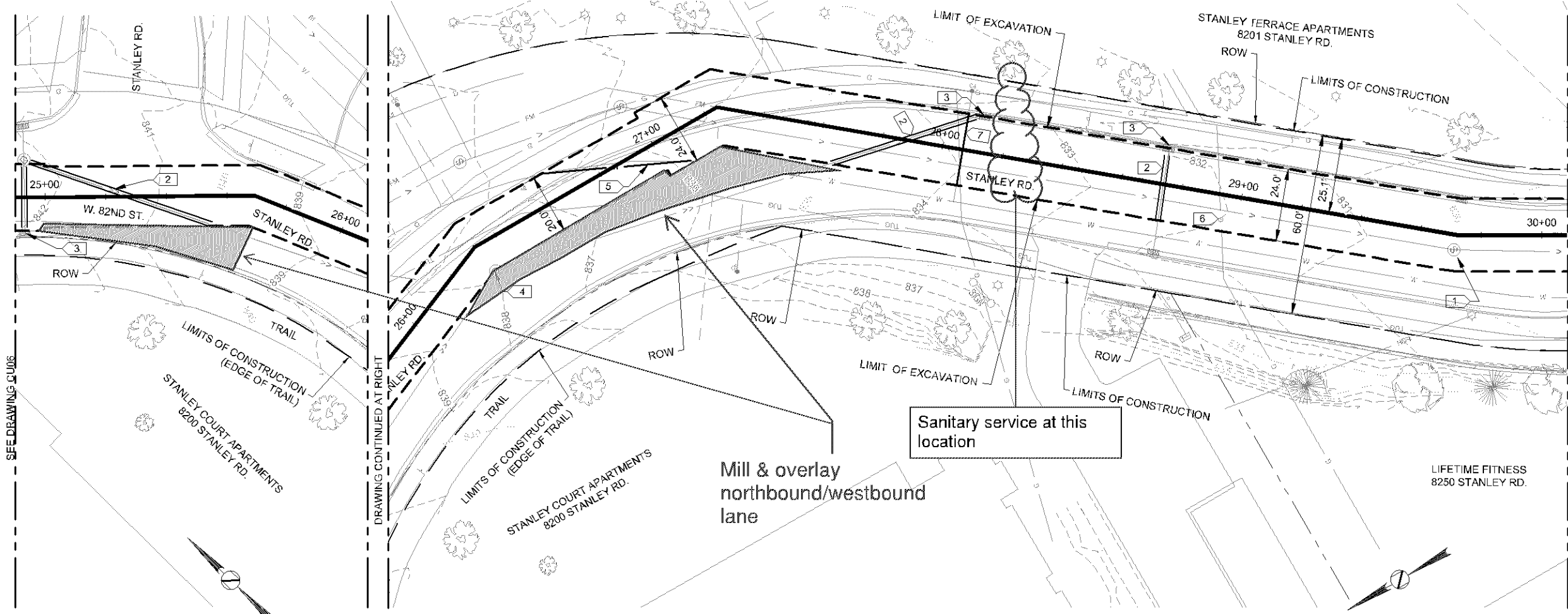
DATE: XX/XX/16 REG NO: 52793



PROJECT: 808400
 FILE NAME: CU0005

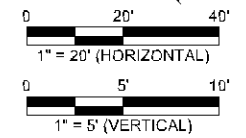
BLOOMINGTON L55
 FM PIPE ALIGNMENT SITE PLAN

CU05
 --- OF TS



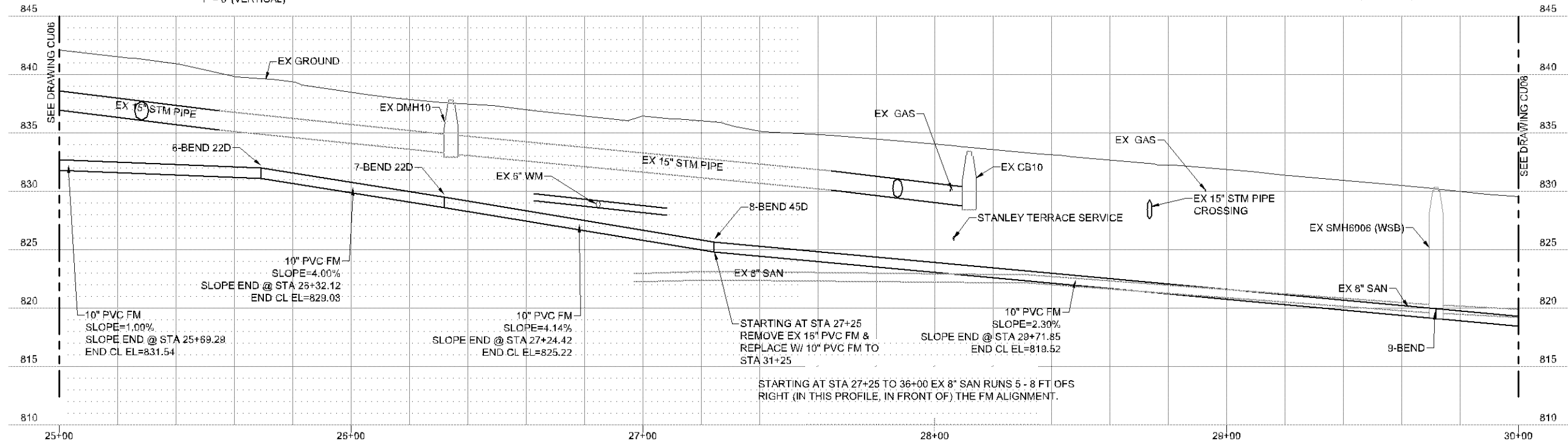
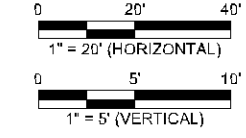
- GENERAL NOTES:**
1. PROVIDE TEMPORARY CONVEYANCE OF WM PER SECTION 01569. SEE SHEET CU19 FOR PROPOSED LAYOUT.
 2. PROTECT OR REMOVE & REPLACE UTILITIES AND SURFACE IMPROVEMENTS AS REQUIRED TO COMPLETE THE WORK UNLESS OTHERWISE NOTED.
 3. PROVIDE & MAINTAIN INLET PROTECTION PER DETAIL 5/CJ05.

- KEYNOTES:**
1. PROTECT EX SAN MH.
 2. REMOVE & REPLACE STM PIPE WITHIN EXCAVATION.
 3. PROTECT EX CB.
 4. PROTECT EX STM MH.
 5. REMOVE & REPLACE EX WM WITHIN EXCAVATION.
 6. PROTECT & SUPPORT GAS LINE.
 7. REMOVE & REPLACE WATER SERVICE WITHIN EXCAVATION.



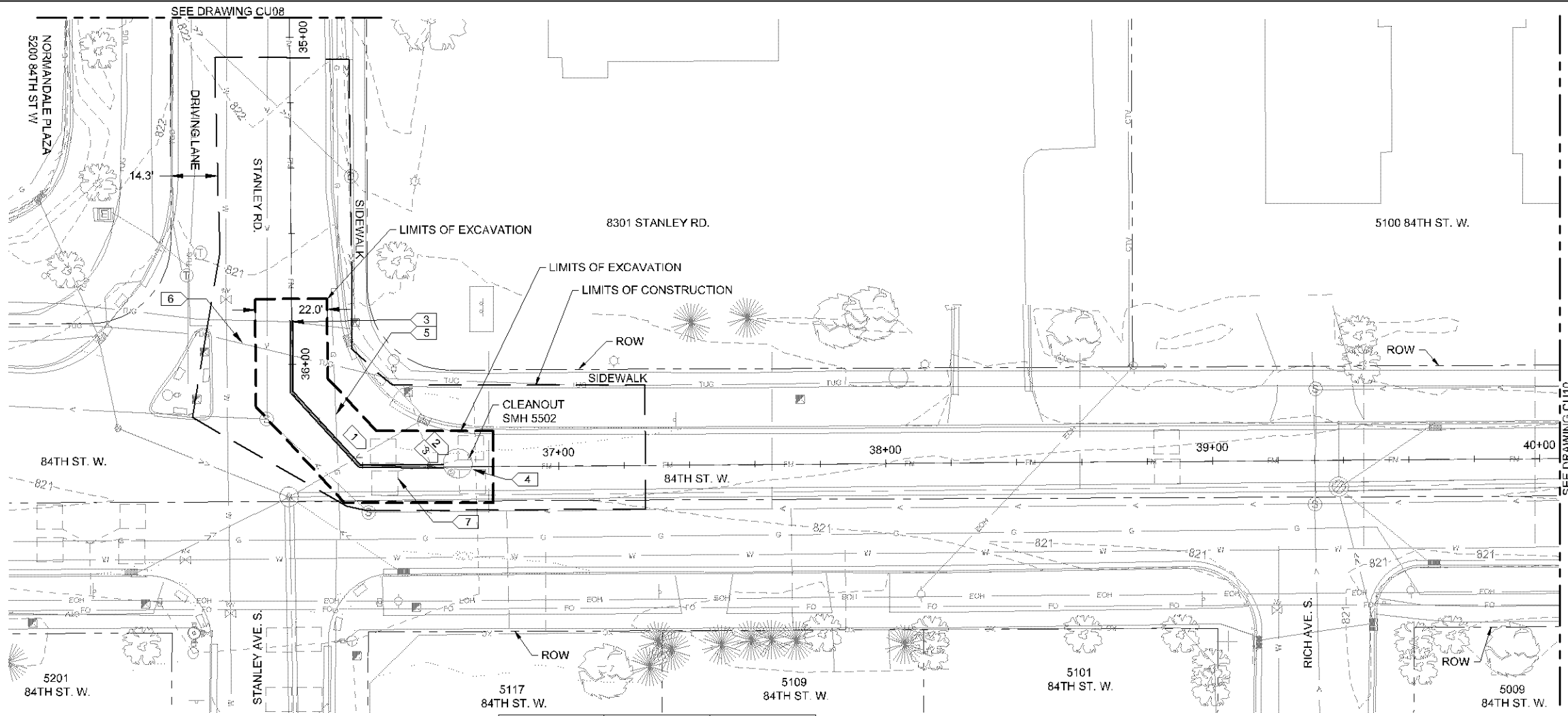
SIZE - INCHES	MATERIAL	STIFFNESS CLASS
10	PVC	DR25

PL201600213



O:\2014\0066 D\CAD\RD\400\SHSHEETS\CU0007.DWG
 PLOTTED: 1/23/2016 2:35:30 PM
 MODIFIED: 1/22/2016 3:55:56 PM

PRELIMINARY NOT FOR CONSTRUCTION				DESIGNED: JMS DRAWN: JJC CHECKED: ARS DATE: 1/22/2016	I HEREBY CERTIFY THAT THIS PLAN, SPECIFICATION, OR REPORT WAS PREPARED BY ME OR UNDER MY DIRECT SUPERVISION AND THAT I AM A FULLY LICENSED PROFESSIONAL ENGINEER UNDER THE LAWS OF THE STATE OF MINNESOTA. SIGNATURE: ALISON R. SUMPTION TYPED NAME: ALISON R. SUMPTION DATE: 1/22/2016		PROJECT: 808400 PLAN: CU0007	BLOOMINGTON L55 FM PLAN & PROFILE STA 25+00 TO 30+00	CU07 OF TS
---	--	--	--	--	--	---	---------------------------------	--	----------------------



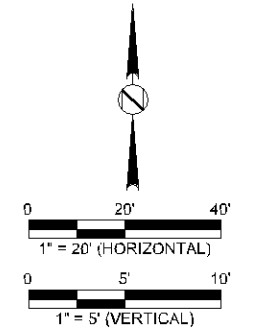
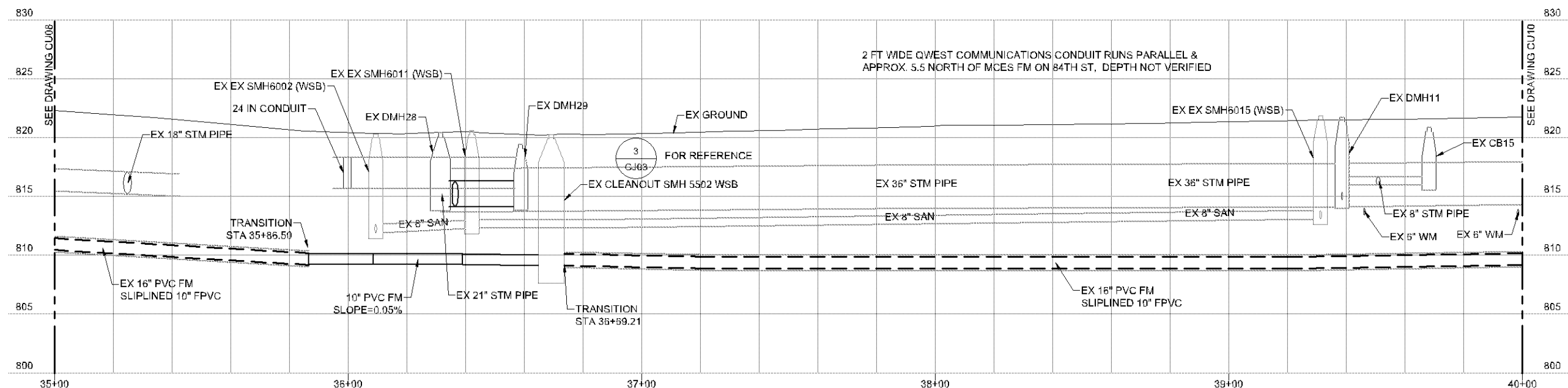
- GENERAL NOTES:**
1. PROTECT OR REMOVE & REPLACE UTILITIES AND SURFACE IMPROVEMENTS AS REQUIRED TO COMPLETE THE WORK UNLESS OTHERWISE NOTED.
 2. PROVIDE & MAINTAIN INLET PROTECTION PER DETAIL 5/CJ06.

- KEYNOTES:**
1. REMOVE & REPLACE EX 21" STM PIPE WITHIN EXCAVATION.
 2. REMOVE, SALVAGE & REINSTALL TOP OF SMH 5502 FOR ACCESS & USE AS A SLIPLING RECEIVING PIT UTILIZING A WINCH & PULLEY SYSTEM. FOR AS-BUILT REFERENCE SEE DETAIL 3/CJ04.
 3. CONNECT PVC WITH FUSIBLE PVC (FPVC) PER DETAIL 3/CJ02.
 4. REFER TO DETAILS 3/CJ03 & 4/CJ03 FOR CONNECTION TO STRUCTURE & WORK IN STRUCTURE.
 5. PROTECT & SUPPORT GAS LINE.
 6. VERIFY, PROTECT & SUPPORT TELEPHONE DUCT BANK.
 7. REPLACE DISTURBED TRAFFIC LOOPS.

Add note regarding contacting Bloomington Traffic Maintenance prior to disturbing traffic loops so signal can be put on recall.

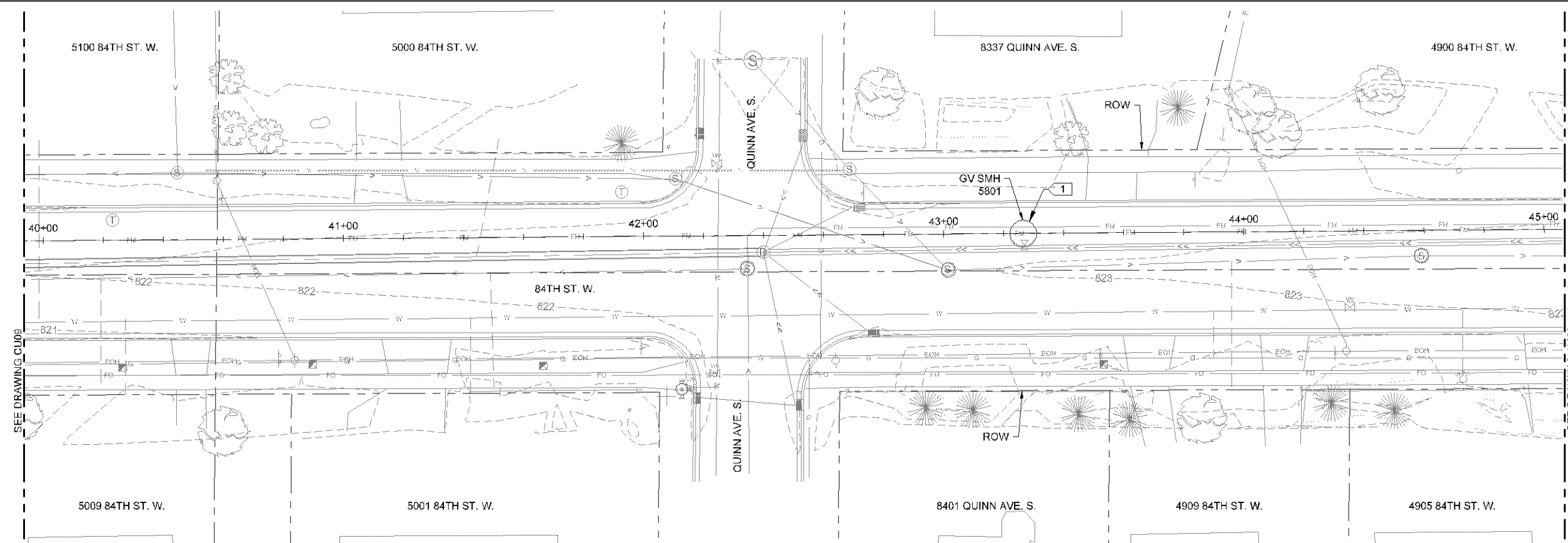
PL201600213

SIZE - INCHES	MATERIAL	STIFFNESS CLASS
10	FPVC	DR25
10	PVC	DR25
10	FPVC	DR25




O:\2014\0006 D\CAD\RD\400\SHSHEETS\CU009.DWG
 PLOTTED: 1/23/2016 2:35:42 PM
 MODIFIED: 1/23/2016 3:53:52 PM

PRELIMINARY NOT FOR CONSTRUCTION				DESIGNED: JMS DRAWN: JJC CHECKED: ARS DATE: 10/20/15	I HEREBY CERTIFY THAT THIS PLAN, SPECIFICATION, OR REPORT WAS PREPARED BY ME OR UNDER MY DIRECT SUPERVISION AND THAT I AM A FULLY LICENSED PROFESSIONAL ENGINEER UNDER THE LAWS OF THE STATE OF MINNESOTA. SIGNATURE: ALISON R. SUNNPTON TYPE OF PROFESSIONAL SERVICE: 52793 EXPIRES: 10/20/16		PROJECT: 808400 PLAN: CU0009	BLOOMINGTON L55 FM PLAN & PROFILE STA 35+00 TO 40+00	CU09 --- OF TS								
<table border="1" style="width: 100%; border-collapse: collapse;"> <thead> <tr> <th>NO.</th> <th>DATE</th> <th>BY</th> <th>REVISIONS</th> </tr> </thead> <tbody> <tr> <td> </td> <td> </td> <td> </td> <td> </td> </tr> </tbody> </table>										NO.	DATE	BY	REVISIONS				
NO.	DATE	BY	REVISIONS														

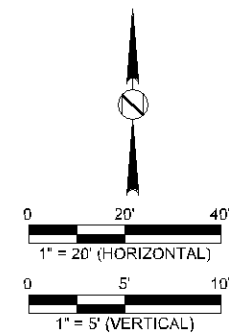
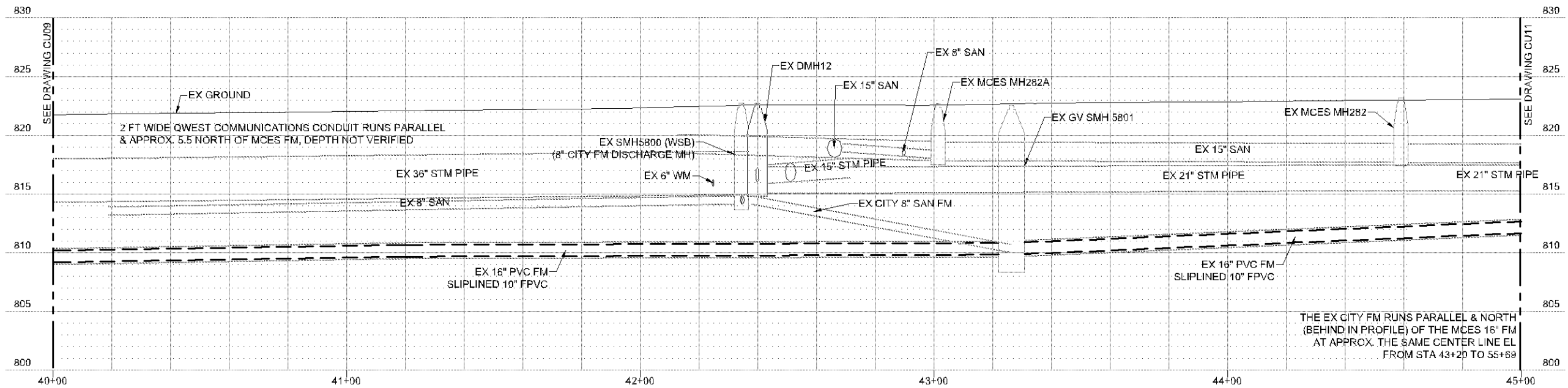


GENERAL NOTES:
1. NOT USED

KEYNOTES: 
1. FOR AS-BUILT REFERENCE SEE
DETAIL 2/CJ03.

SIZE - INCHES	MATERIAL	STIFFNESS CLASS
10	FPVC	DR25

PL201600213



O:\2014\0066 D\2\CAD\RD\4400\SHSHEETS\CJ0010.DWG
 PLOTTED: 1/23/2016 2:37:32 PM
 MODIFIED: 1/22/2016 4:51:54 PM

PRELIMINARY NOT FOR CONSTRUCTION			
DESIGNED JMS	DRAWN JJC	CHECKED ARS	DATE XX/XX/16
ISSUED FOR BIDDING	REVISIONS	REVISIONS	REVISIONS

I HEREBY CERTIFY THAT THIS PLAN, SPECIFICATION, OR REPORT WAS PREPARED
 BY ME OR UNDER MY DIRECT SUPERVISION AND THAT I AM A FULLY LICENSED
 PROFESSIONAL ENGINEER UNDER THE LAWS OF THE STATE OF MINNESOTA.

SIGNATURE: _____
 TYPED NAME: ALISON R. SUMPTION
 DATE: XX/XX/16 REG NO: 52793



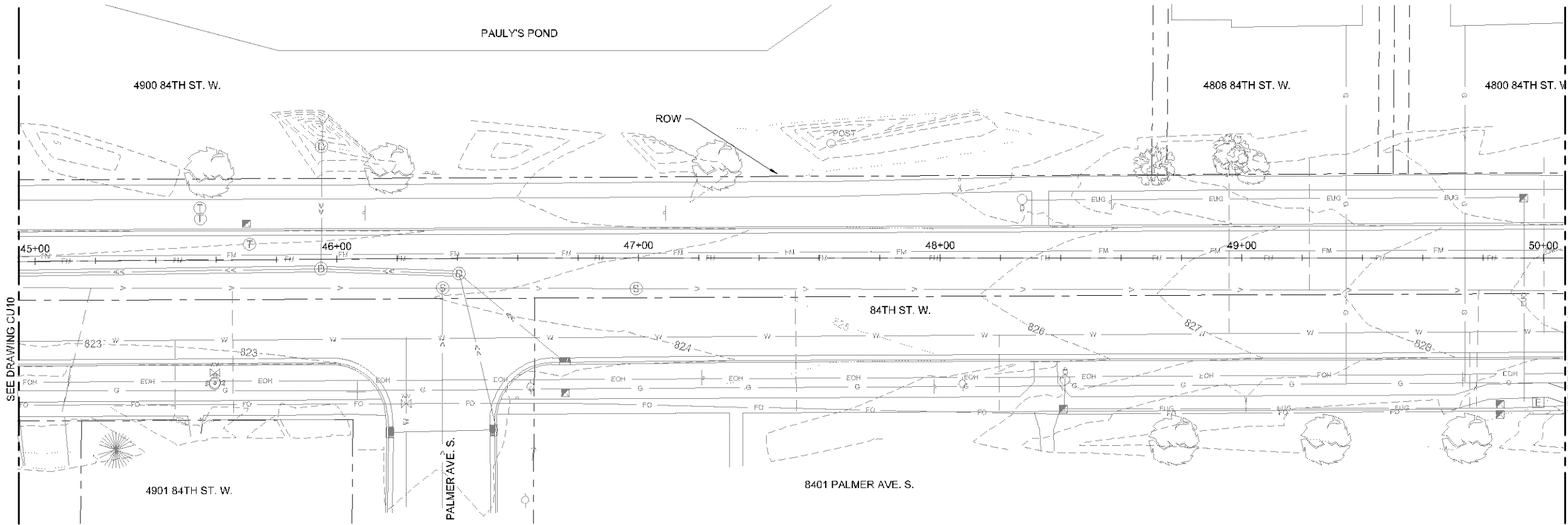
PROJECT: 808400
 PLAN: CU0010

BLOOMINGTON L55
 FM PLAN & PROFILE STA 40+00 TO 45+00

CU10
 --- OF TS

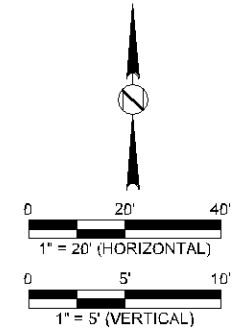
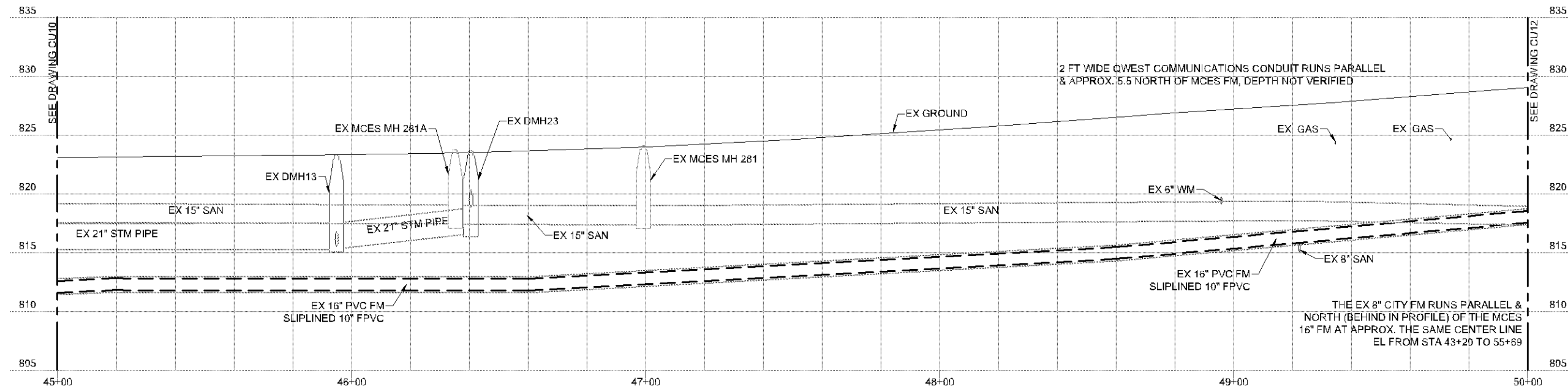
PL201600213

GENERAL NOTES:
1. NOT USED



KEYNOTES:
1. NOT USED.
2.

SIZE - INCHES	MATERIAL	STIFFNESS CLASS
10	FPVC	DR25



C:\2014\006\02\CAD\02\06\00\SHSHEETS\CU0011.DWG
 PLOTTED: 1/23/2016 12:38:23 PM
 MODIFIED: 1/22/2016 4:46:06 PM

PRELIMINARY NOT FOR CONSTRUCTION			
NO.	DATE	BY	REVISIONS

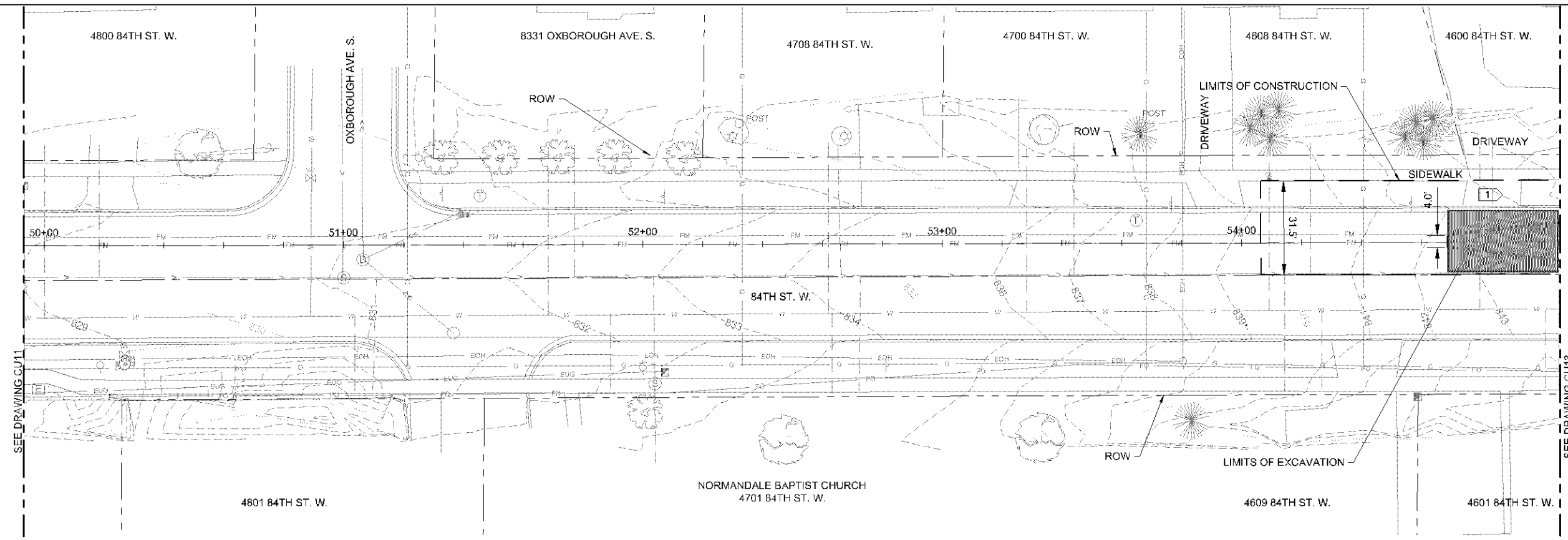
DESIGNED BY: JWS
 DRAWN BY: JJC
 CHECKED BY: ARS
 DATE: XX/XX/16
 PROJECT NO: 808400
 SHEET NO: 32793



PROJECT NO: 808400
 SHEET NO: CU0011

BLOOMINGTON L55
 FM PLAN & PROFILE STA 45+00 TO 50+00

CU11
 0-TS

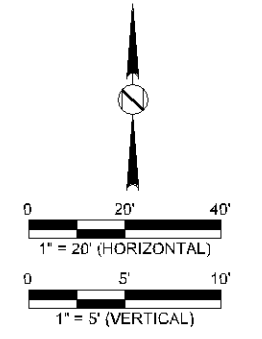
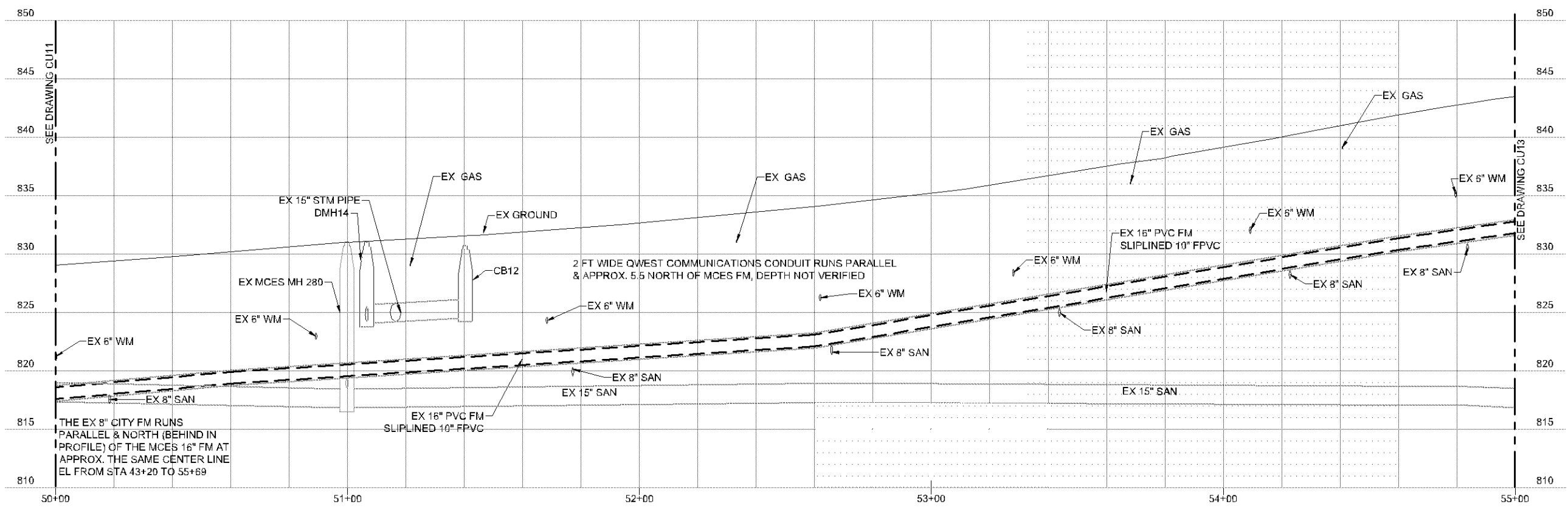


GENERAL NOTES:
1. NOT USED

KEYNOTES:
1. COORDINATE WITH CT SHEETS FOR DRIVEWAY BLOCKAGE.

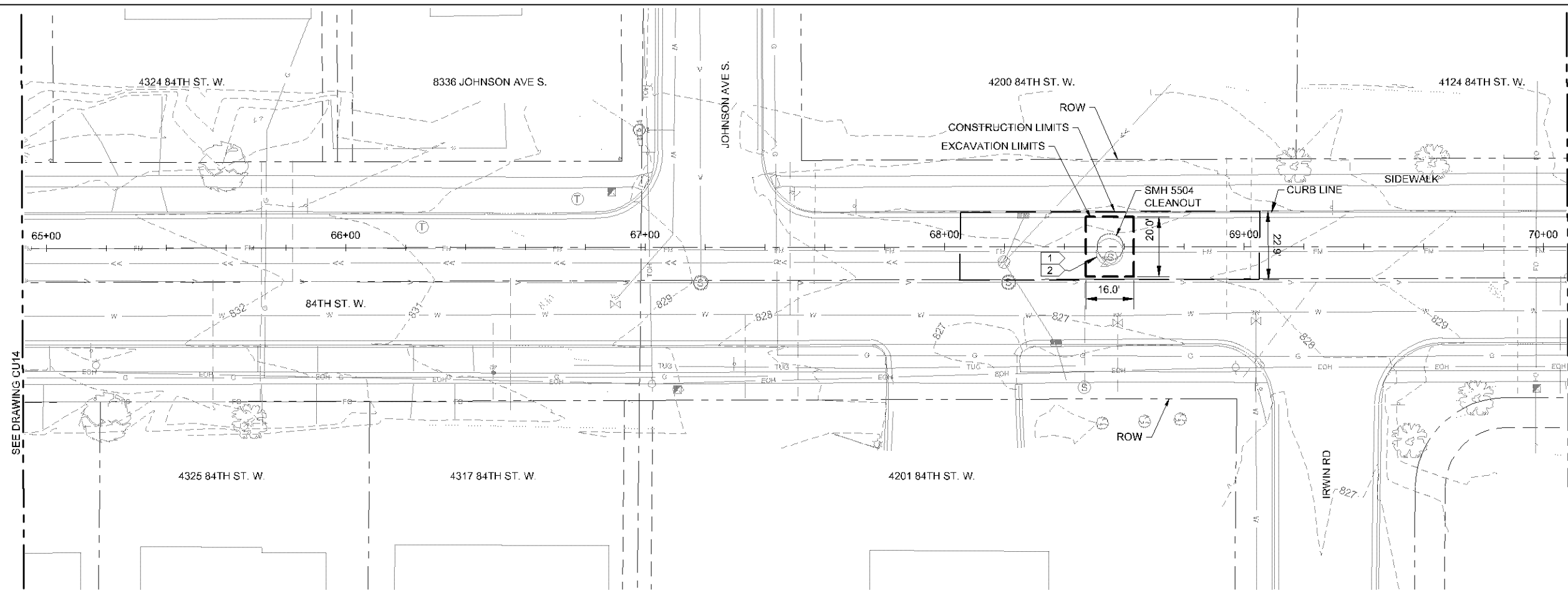
PL201600213

SIZE - INCHES	MATERIAL	STIFFNESS CLASS
10	FPVC	DR25



O:\2014\0066 D\GAD\RD\4400\SHSHEETS\CU0012.DWG
 PLOTTED: 1/23/2016 2:39:13 PM
 MODIFIED: 1/22/2016 5:21:01 PM

PRELIMINARY NOT FOR CONSTRUCTION				DESIGNED: JMS DRAWN: JJC CHECKED: ARS DATE: 1/23/2016 BY: JJC ITEM NO: 52793		PROJECT: 808400 FILE NAME: CU0012	BLOOMINGTON L55 FM PLAN & PROFILE STA 50+00 TO 55+00	CU12 --- OF TS
-------------------------------------	--	--	--	---	---	--------------------------------------	--	-------------------

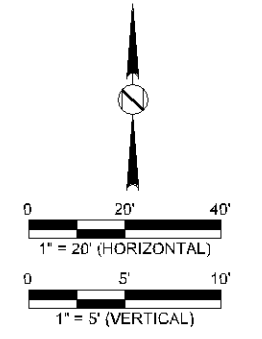
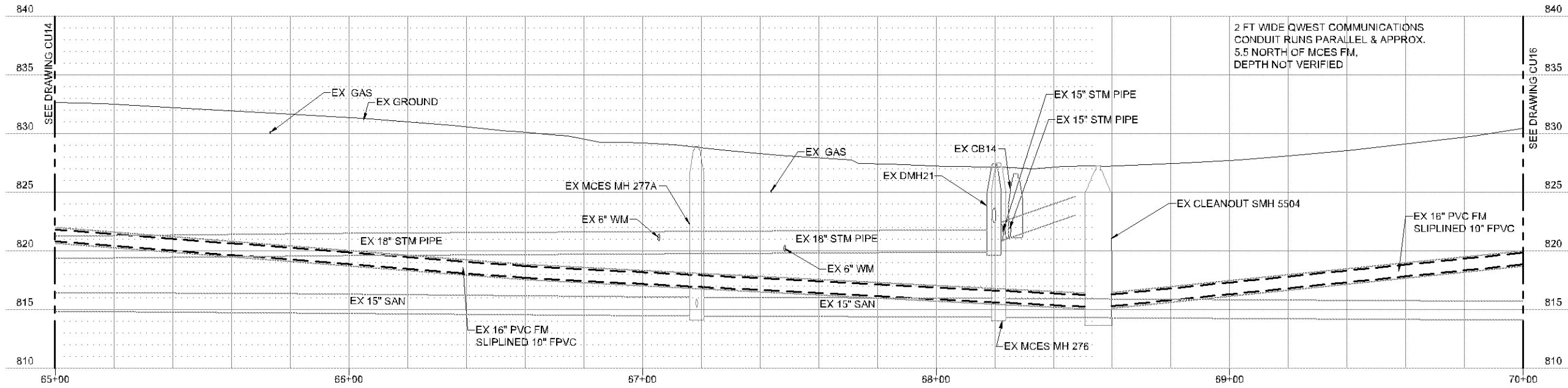


- GENERAL NOTES:**
- PROTECT OR REMOVE & REPLACE UTILITIES AND SURFACE IMPROVEMENTS AS REQUIRED TO COMPLETE THE WORK UNLESS OTHERWISE NOTED.
 - PROVIDE & MAINTAIN INLET PROTECTION PER DETAIL 5/CJ06.

- KEYNOTES:**
- REMOVE, SALVAGE & REINSTALL SMH 5504 FOR ACCESS. FOR AS-BUILT REFERENCE SEE DETAIL 3/CJ04.
 - REFER TO DETAILS 3/CJ03 & 4/CJ03 FOR CONNECTION TO STRUCTURE AND WORK IN STRUCTURE.

SIZE - INCHES	MATERIAL	STIFFNESS CLASS
10	FPVC	DR25

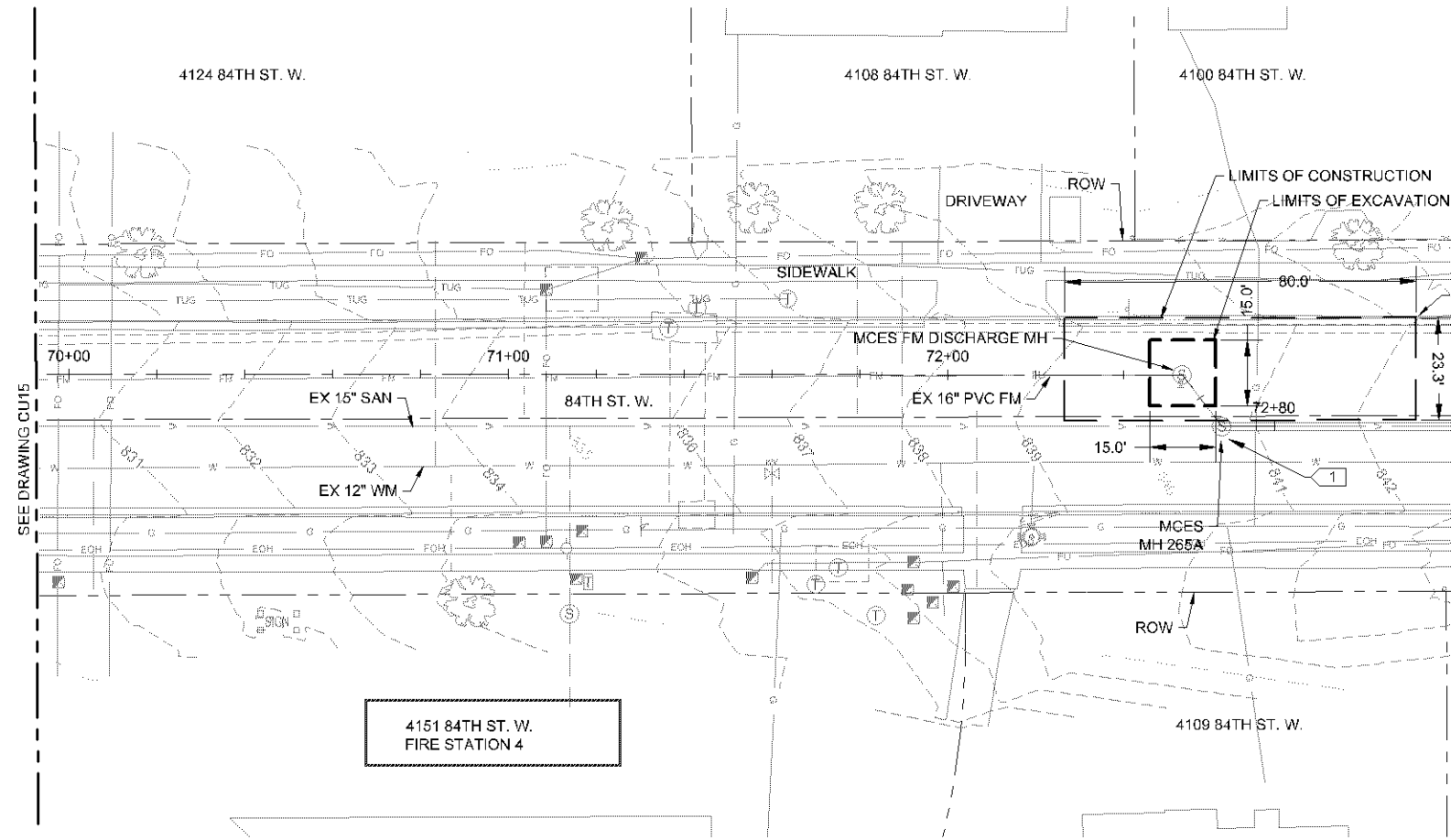
PL201600213



O:\2014\0006 D\GAD\RD\400\SHSHEETS\CU0015.DWG
 PLOTTED: 1/23/2016 2:35:57 PM
 MODIFIED: 1/23/2016 2:32:38 PM

PRELIMINARY NOT FOR CONSTRUCTION				DESIGNED: JMS DRAWN: JJC CHECKED: ARS DATE: 10/20/15 REVISIONS:	I HEREBY CERTIFY THAT THIS PLAN, SPECIFICATION, OR REPORT WAS PREPARED BY ME OR UNDER MY DIRECT SUPERVISION AND THAT I AM A FULLY LICENSED PROFESSIONAL ENGINEER UNDER THE LAWS OF THE STATE OF MINNESOTA.		PROJECT: 808400 PLAN: CU0015	BLOOMINGTON L55 FM PLAN & PROFILE STA 65+00 TO 70+00	CU15 --- OF TS
-------------------------------------	--	--	--	---	--	--	---------------------------------	--	--------------------------

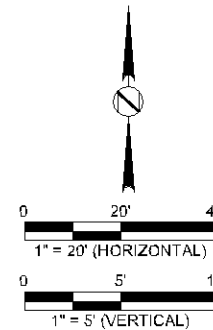
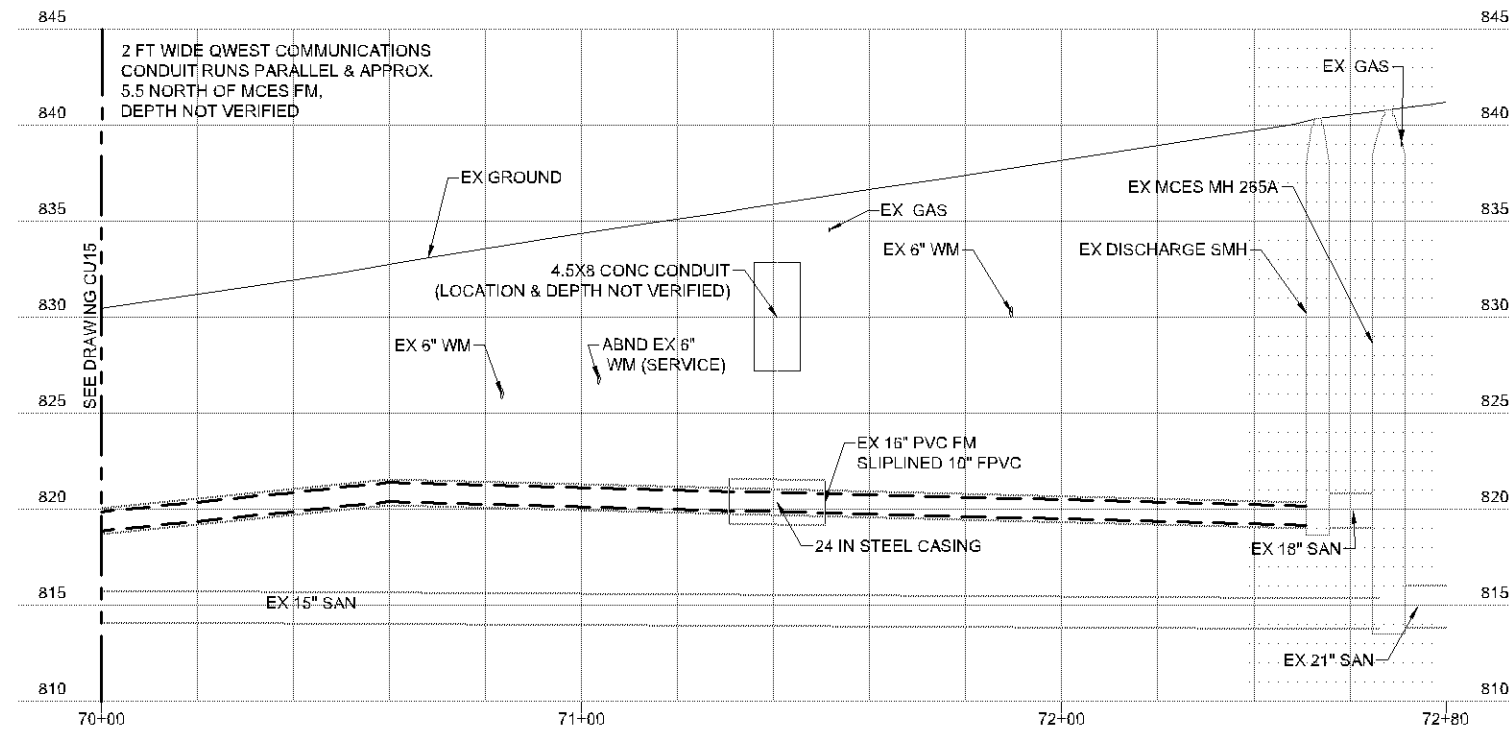
GENERAL NOTES:
 1. PROTECT OR REMOVE & REPLACE UTILITIES AND SURFACE IMPROVEMENTS AS REQUIRED TO COMPLETE THE WORK UNLESS OTHERWISE NOTED.



Verify limits of construction= limits of pavement restoration

KEYNOTES:
 1. PROTECT EX MCES MH 265A.
 2. REMOVE, SALVAGE & REINSTALL FM DISCHARGE MH FOR ACCESS AND USE AS A SLIPLINING RECEIVING PIT UTILIZING A WINCH & PULLEY SYSTEM.

SIZE - INCHES	MATERIAL	STIFFNESS CLASS
10	FPVC	DR25



O:\2014\0066 D\CAD\RD\4400\SHSHEETS\CU0016.DWG
 PLOTTED: 1/23/2016 2:00:12 PM
 MODIFIED: 1/23/2016 2:17:55 PM

PRELIMINARY NOT FOR CONSTRUCTION			
NO	DATE	BY	REVISIONS

DESIGNED: JMS
 DRAWN: JJC
 CHECKED: KJA
 TYPED OR PLOTTED BY: ALISON R. SUNNUPION
 DATE: XX/XX/16
 REVISION: 52793



PROJECT: 808400
 FILENAME: CU0016

BLOOMINGTON L55
 FM PLAN & PROFILE STA 70+00 TO 72+80

CU16
 --- OF TS

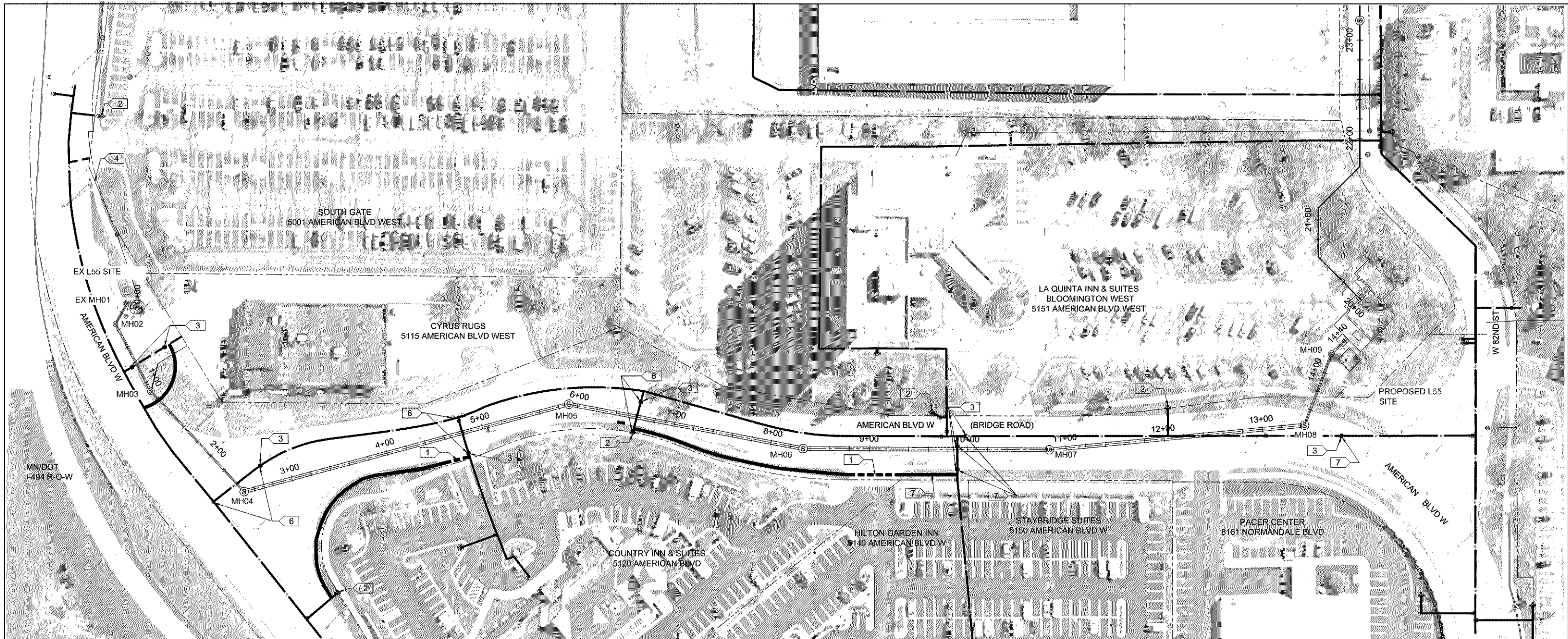
GENERAL NOTES:
 1. SEE SHEET G103 FOR SURVEY
 HORIZONTAL COORDINATE SYSTEM,
 VERTICAL DATUM AND BENCHMARKS.

PL201600213

3-BN-499 GRAVITY PIPE						
START STATION	START NORTHING	START EASTING	LENGTH	BEARING	END NORTHING	END EASTING
0+00.00	N = 124460.76	E = 509354.67	10.00	N89° 08' 01.48"W	N = 124460.91	E = 509344.68
0+10.00	N = 124460.91	E = 509344.68	23.31	N60° 35' 07.33"W	N = 124472.36	E = 509324.37
0+33.31	N = 124472.36	E = 509324.37	77.18	S62° 08' 27.84"W	N = 124436.29	E = 509256.13
1+10.50	N = 124436.29	E = 509256.13	139.10	S47° 09' 10.84"W	N = 124341.70	E = 509154.14
2+49.60	N = 124341.70	E = 509154.14	341.37	S15° 05' 43.80"E	N = 124012.11	E = 509243.04
5+90.97	N = 124012.11	E = 509243.04	242.07	S10° 44' 58.14"W	N = 123774.28	E = 509197.89
8+33.04	N = 123774.28	E = 509197.89	250.00	S00° 17' 14.04"W	N = 123524.29	E = 509196.64
10+83.04	N = 123524.29	E = 509196.64	260.21	S05° 30' 09.32"E	N = 123265.27	E = 509221.59
13+43.25	N = 123265.27	E = 509221.59	77.86	S69° 21' 15.32"E	N = 123237.82	E = 509294.45
14+21.11	N = 123237.82	E = 509294.45	18.89	S45° 00' 00.00"E	N = 123224.46	E = 509307.81

C:\2014\006\02\CAD\02\04\00\SHSHEETS\CU0017.DWG
 PLOTTED: 1/23/2016 2:13:05 PM
 MODIFIED: 1/11/2016 11:33:43 AM

PRELIMINARY NOT FOR CONSTRUCTION				DESIGNED: ARS DRAWN: JJC CHECKED: KJA	I CERTIFY THAT THIS PLAN, SPECIFICATION, OR REPORT WAS PREPARED BY ME OR UNDER MY DIRECT SUPERVISION AND THAT I AM A FULLY LICENSED PROFESSIONAL ENGINEER UNDER THE LAWS OF THE STATE OF MINNESOTA. SIGNATURE: _____ TYPED OR PRINTED NAME: ALISON R. SUYPTION DATE: XX/XX/16 REG NO: 32793		PROJECT: 808400 FILE NAME: CU0017	BLOOMINGTON L55 SURVEY PIPE ALIGNMENT TABLES	CU17 --- OF --- TS
REVISIONS NO. DATE BY REVISIONS		REVISIONS NO. DATE BY REVISIONS							



PL201600213

KEYNOTES:

1. BURY TEMPORARY CONVEYANCE TO MAINTAIN DRIVEWAY ACCESS.
2. PROTECT HYDRANT DURING CONSTRUCTION. COVER IF OUT OF SERVICE.
3. INSTALL NEW VALVE.
4. USE EXISTING SANITARY FM FOR TEMPORARY CONVEYANCE DURING CONSTRUCTION OF STAGES 1 THROUGH 7.
5. TURN OFF VALVES AND PROVIDE TEMPORARY WATER SERVICE DURING CONSTRUCTION OF STAGE 8.
6. TURN OFF VALVES AND PROVIDE TEMPORARY WATER SERVICE DURING CONSTRUCTION OF STAGE 4.
7. TURN OFF VALVES AND PROVIDE TEMPORARY WATER SERVICE DURING CONSTRUCTION OF STAGE 3.

GENERAL NOTES:

1. SUGGESTED TEMPORARY CONVEYANCE ALIGNMENT FOR WATER IS SHOWN. OTHER ALIGNMENT MAY BE USED IF ACCEPTABLE TO THE CAR.
2. SEE SHEETS CU_ FOR REMOVAL & REPLACEMENT OF WATERMAIN.

O:\2014\0066 02\CAD\808400\SHEETS\CU0018.DWG
 PLOTTED: 11/22/2016 12:41:45 PM
 MODIFIED: 11/18/2016 3:05:22 PM

PRELIMINARY NOT FOR CONSTRUCTION			
DESIGNED	ARS	HEREBY CERTIFY THAT THIS PLAN, SPECIFICATION, OR REPORT WAS PREPARED BY ME OR UNDER MY DIRECT SUPERVISION AND THAT I AM A DULY LICENSED PROFESSIONAL ENGINEER UNDER THE LAWS OF THE STATE OF MINNESOTA.	
DRAWN	JJC	SIGNATURE:	ALISON R. SUMPTION
CHECKED	KJA	TYPED OR PRINTED NAME:	ALISON R. SUMPTION
DATE	XXXX/16	DATE:	XXXX/16
BY	REVISIONS	REG NO:	52793

PROJECT	808400
FILE NAME	CU0018



PROJECT	808400
FILE NAME	CU0018

BLOOMINGTON L55	
TEMPORARY CONVEYANCE	

CU18
--- OF TS

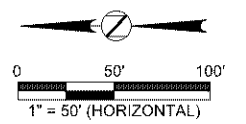
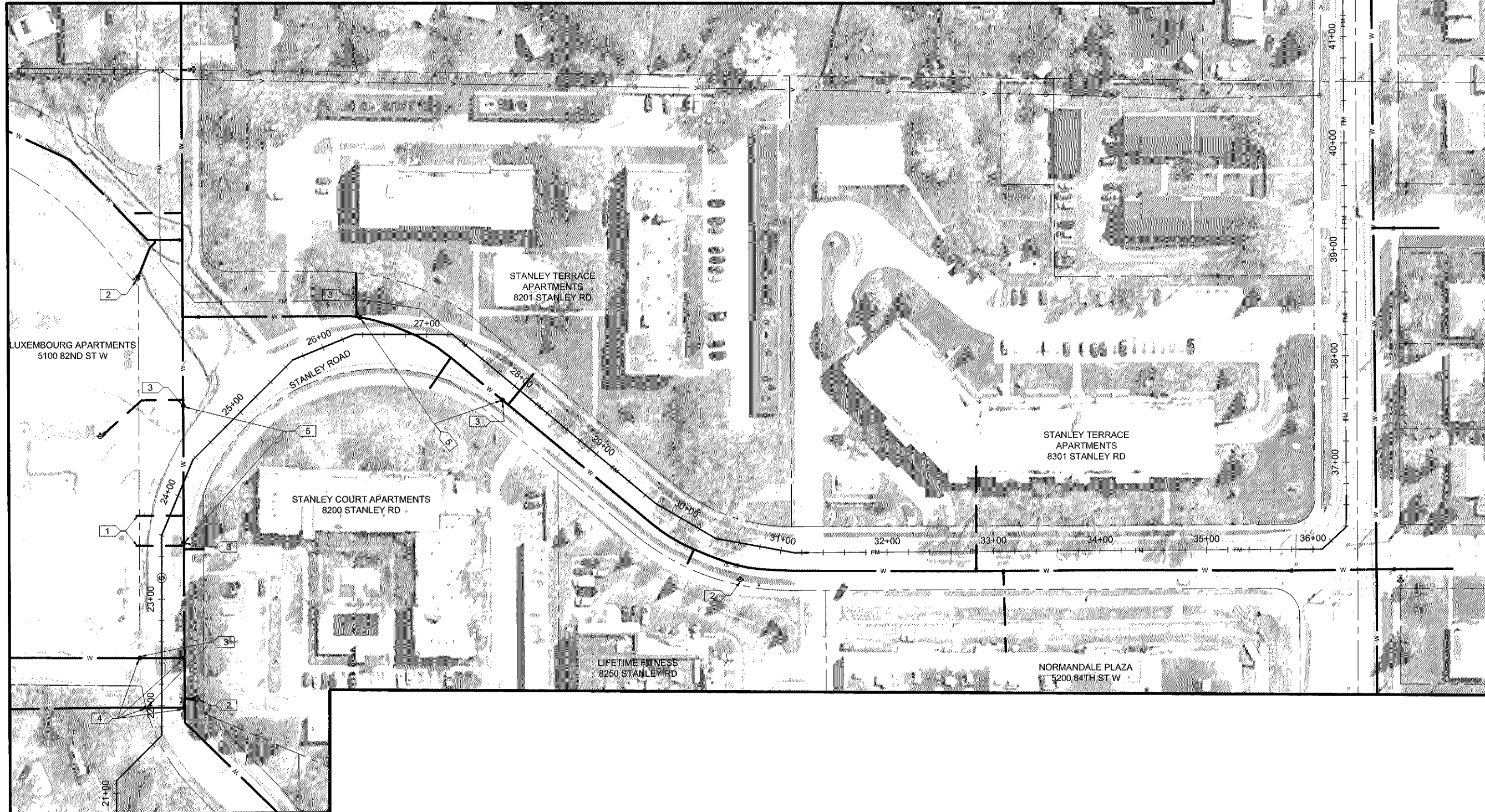
GENERAL NOTES:

1. SUGGESTED TEMPORARY CONVEYANCE ALIGNMENT FOR WATER IS SHOWN. OTHER ALIGNMENT MAY BE USED IF ACCEPTABLE TO THE CAR.
2. SEE SHEETS CU__ FOR REMOVAL & REPLACEMENT OF WATERMAIN.

KEYNOTES:

1. NOT IN USE. CONFIRM IN FIELD.
2. PROTECT HYDRANT DURING CONSTRUCTION. COVER IF OUT OF SERVICE.
3. INSTALL NEW VALVE.
4. TURN OFF VALVES DURING CONSTRUCTION OF STAGE 2.
5. TURN OFF VALVES DURING CONSTRUCTION OF STAGE 5.

PL201600213



O:\2014\0066 02\CAD\0084\00\01\SHEETS\CU0019.DWG
 PLOTTED: 1/23/2016 12:42:24 PM
 MODIFIED: 1/18/2016 3:05:34 PM

		PRELIMINARY NOT FOR CONSTRUCTION	
DESIGNED	ARS		
DRAWN	JJC		
CHECKED	KJA		
DATE	XX/XX/16	REG NO	52793
REVISIONS		REVISIONS	

I HEREBY CERTIFY THAT THIS PLAN, SPECIFICATION, OR REPORT WAS PREPARED BY ME OR UNDER MY DIRECT SUPERVISION AND THAT I AM A DULY LICENSED PROFESSIONAL ENGINEER UNDER THE LAWS OF THE STATE OF MINNESOTA.
 SIGNATURE: _____
 TYPED OR PRINTED NAME: ALISON R. SUMPTION
 DATE: XX/XX/16 REG NO: 52793

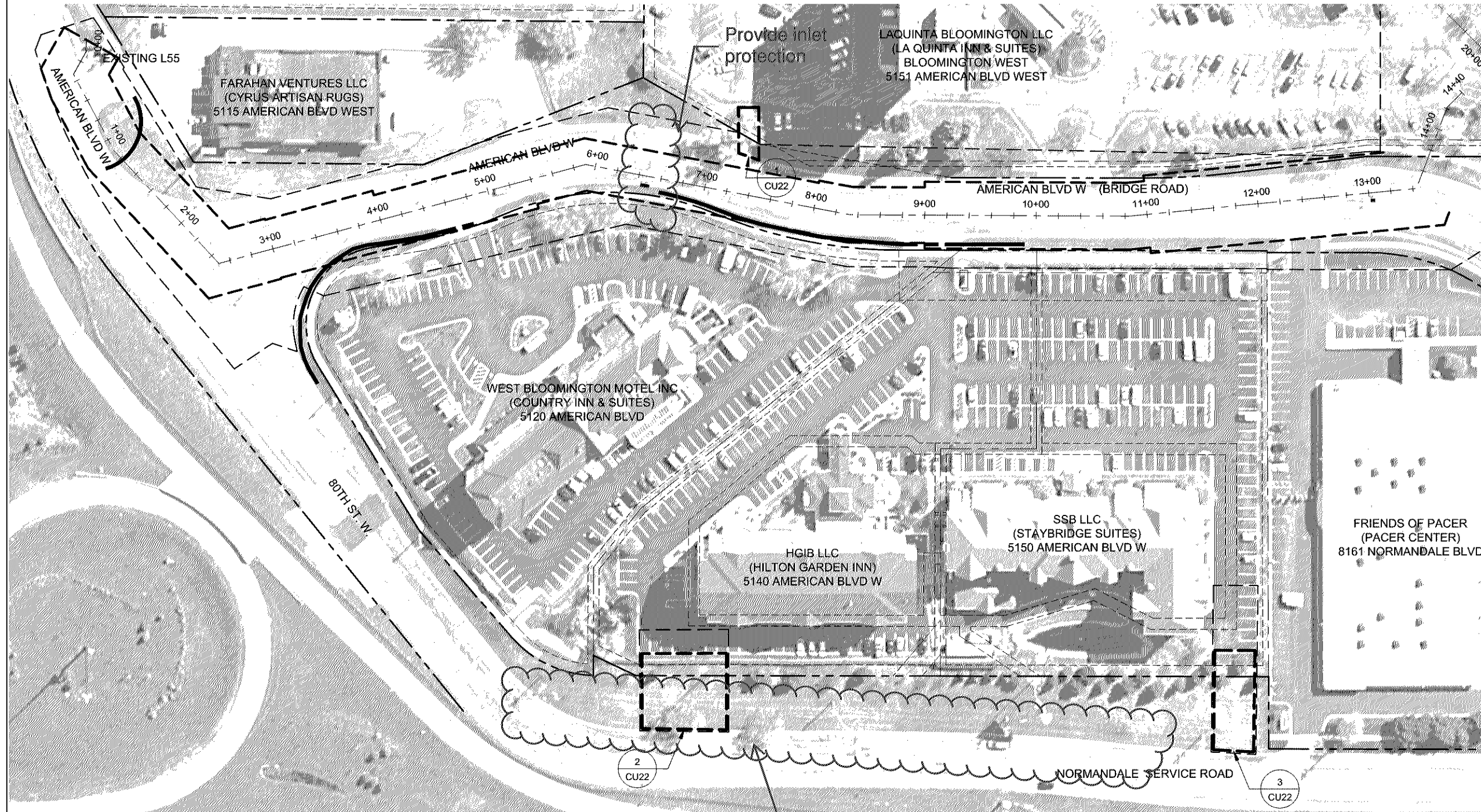


PROJECT	808400
FILE NAME	CU0019

BLOOMINGTON L55
TEMPORARY CONVEYANCE

CU19
 --- OF TS

PL201600213



Provide inlet protection

O:\2014\066 02\CAD\808400\SHEETS\CU0021.DWG
 PLOTTED: 1/23/2016 12:43:08 PM
 MODIFIED: 10/28/2016 3:42:24 PM

PRELIMINARY NOT FOR CONSTRUCTION			
DESIGNED	ARS	HEREBY CERTIFY THAT THIS PLAN, SPECIFICATION, OR REPORT WAS PREPARED BY ME OR UNDER MY DIRECT SUPERVISION AND THAT I AM A DULY LICENSED PROFESSIONAL ENGINEER UNDER THE LAWS OF THE STATE OF MINNESOTA.	
DRAWN	JJC	SIGNATURE:	ALISON R. SUMPTION
CHECKED	KJA	TYPED OR PRINTED NAME:	ALISON R. SUMPTION
DATE:	XX/XX/16	DATE:	XX/XX/16
REG. NO.:	52793	REG. NO.:	52793

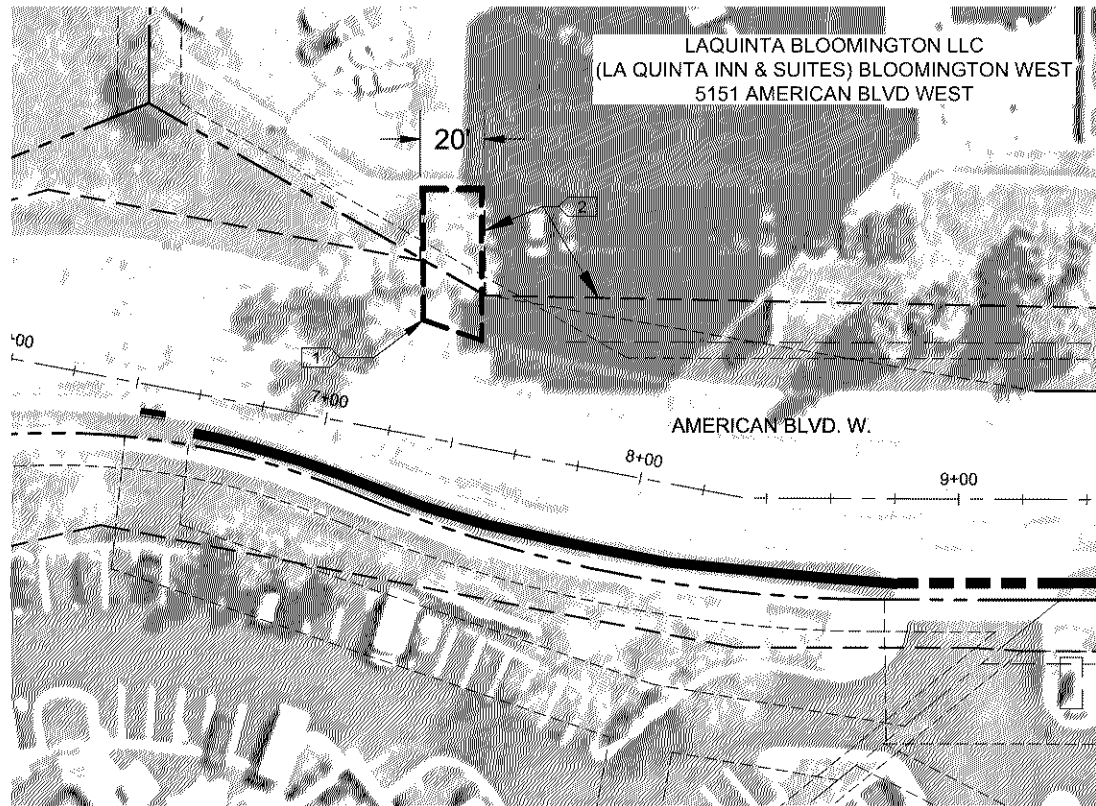


PROJECT	808400
FILE NAME	CU0021

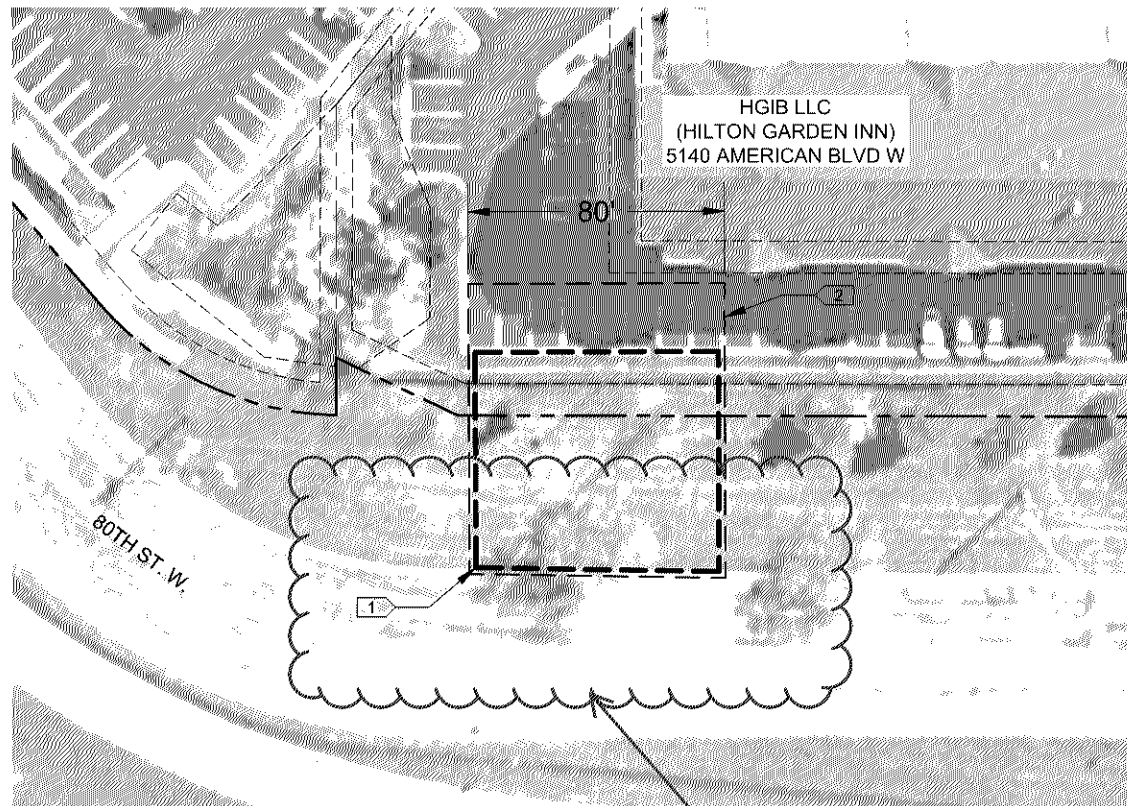
BLOOMINGTON L55	
TEMPORARY ACCESS DRIVEWAYS	

CU21

--- OF TS



1 LAQUINTA INN & SUITES TEMPORARY ACCESS DRIVEWAY DETAIL
CU22 1" = 30'

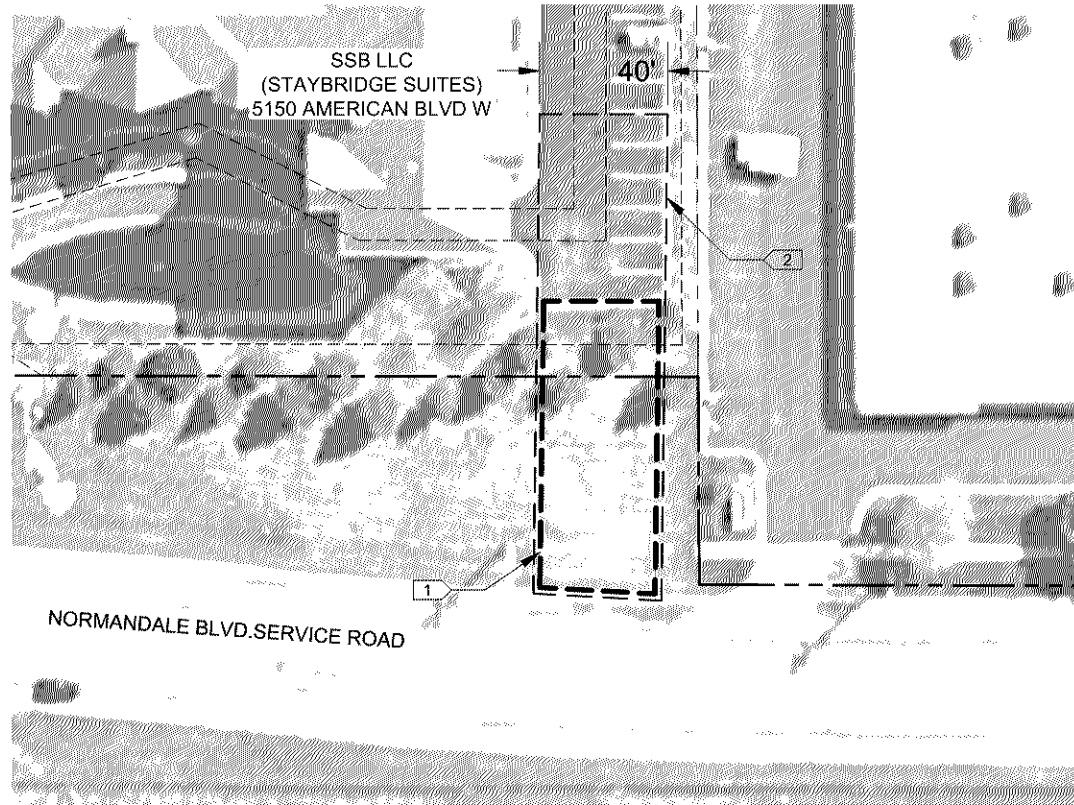


2 HILTON GARDEN INN TEMPORARY ACCESS DRIVEWAY DETAIL
CU22 1" = 30'

GENERAL NOTES:
1.

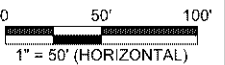
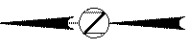
- KEYNOTES: □
1. REMOVE TURF AND CURBS AND PROVIDE TEMPORARY PAVED DRIVEWAY. SEE DETAIL X/CJ0X.
 2. TEMPORARY ACCESS DRIVEWAY CONSTRUCTION LIMITS.

PL201600213



3 STAY BRIDGE SUITES TEMPORARY ACCESS DRIVEWAY DETAIL
CU22 1" = 30'

Provide details on how these CB's will be kept operational.



O:\2014\0066 02\CAD\8084\00\SHEETS\CU0022.DWG
 PLOTTED: 11/23/2016 12:43:56 PM
 MODIFIED: 10/20/2016 8:20:46 AM

PRELIMINARY NOT FOR CONSTRUCTION			
NO	DATE	BY	REMARKS

DESIGNED: ARS	<small> I HEREBY CERTIFY THAT THIS PLAN, SPECIFICATION, OR REPORT WAS PREPARED BY ME OR UNDER MY DIRECT SUPERVISION AND THAT I AM A DULY LICENSED PROFESSIONAL ENGINEER UNDER THE LAWS OF THE STATE OF MINNESOTA. </small>
DRAWN: JJC	
CHECKED: KJA	
DATE: XXXX/16	

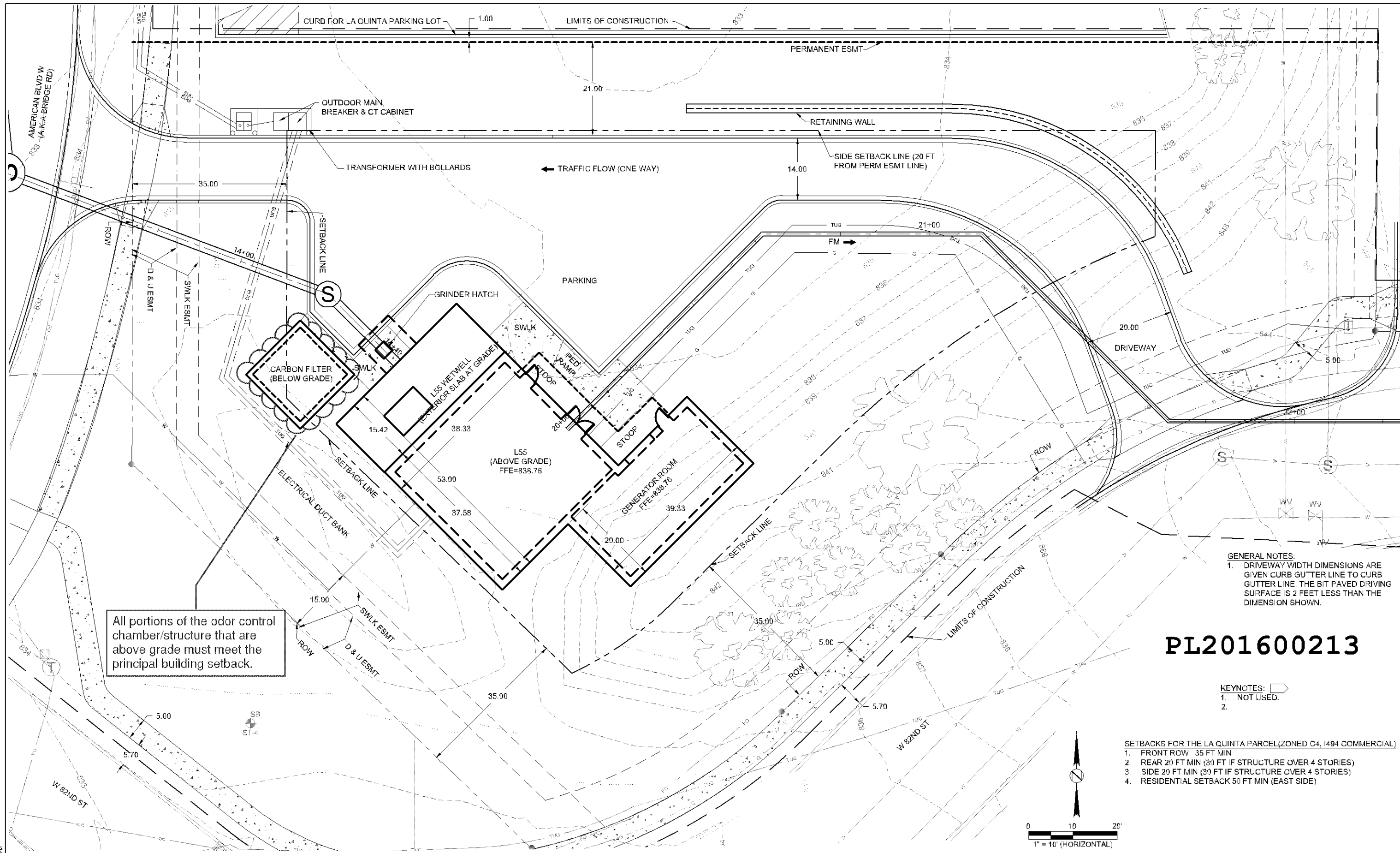

 ALISON R. SUMPTION
 REGISTERED PROFESSIONAL ENGINEER
 REG NO: 52793

PROJECT	808400
FILE NAME	CU0022

BLOOMINGTON L55	
TEMPORARY ACCESS DRIVEWAYS - PLAN DETAILS	

CU22

--- OF TS



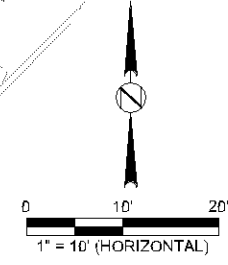
All portions of the odor control chamber/structure that are above grade must meet the principal building setback.

GENERAL NOTES:
 1. DRIVEWAY WIDTH DIMENSIONS ARE GIVEN CURB GUTTER LINE TO CURB GUTTER LINE. THE BIT PAVED DRIVING SURFACE IS 2 FEET LESS THAN THE DIMENSION SHOWN.

PL201600213

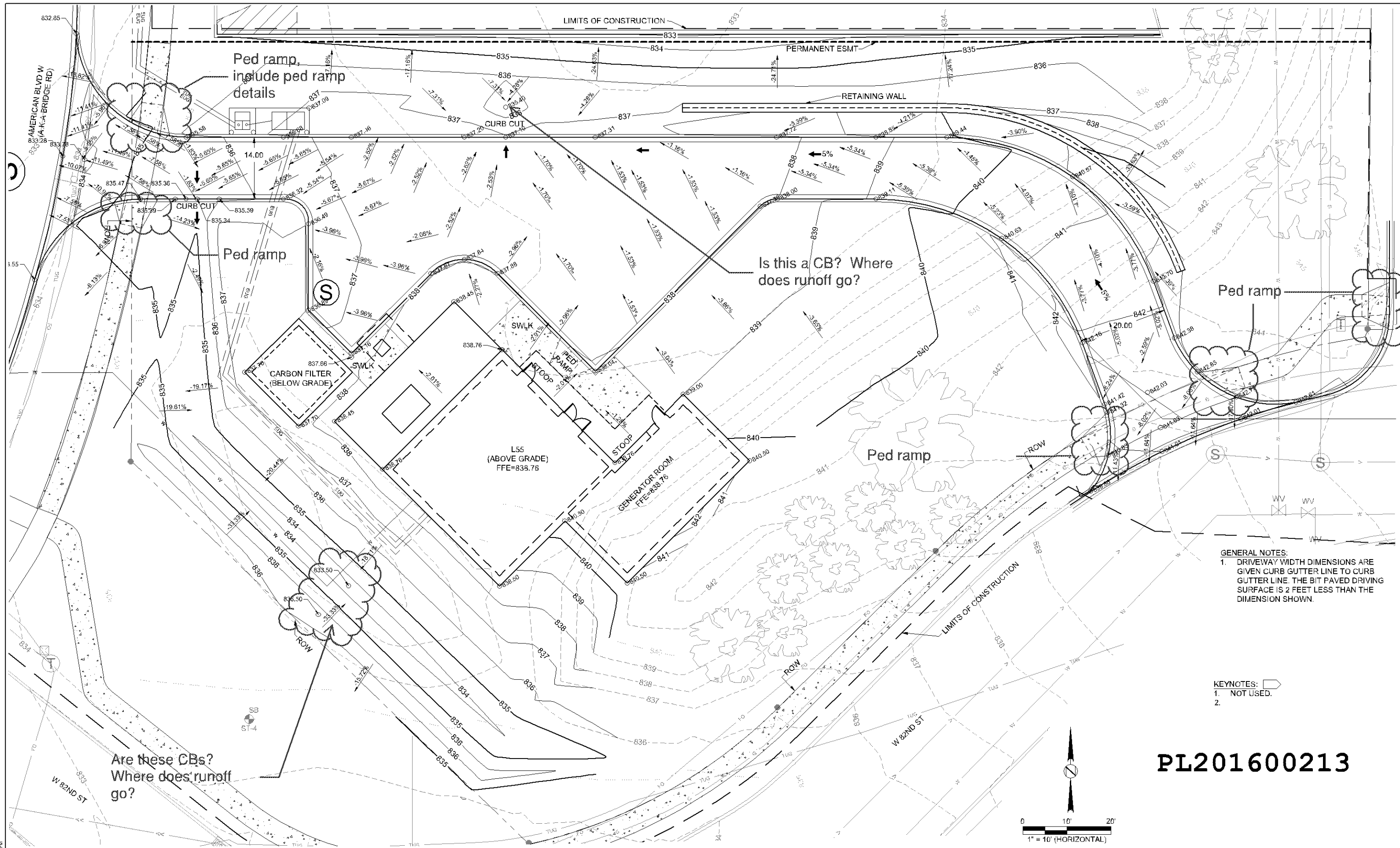
KEYNOTES:
 1. NOT USED.
 2.

SETBACKS FOR THE LA QUINTA PARCEL (ZONED C4, 1494 COMMERCIAL)
 1. FRONT ROW 35 FT MIN
 2. REAR 20 FT MIN (30 FT IF STRUCTURE OVER 4 STORIES)
 3. SIDE 20 FT MIN (30 FT IF STRUCTURE OVER 4 STORIES)
 4. RESIDENTIAL SETBACK 50 FT MIN (EAST SIDE)



O:\2014\0006 D\CAD\RD\4400\SHSHEETS\CS0001.DWG
 PLOTTED: 1/23/2016 2:45:51 PM
 MODIFIED: 10/28/2016 3:50:21 PM

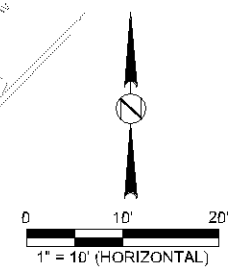
PRELIMINARY NOT FOR CONSTRUCTION				DESIGNED: ARS DRAWN: JJC CHECKED: KJA DATE: XXDCX 16 REVNO: 52793		PROJECT: 808400 PLANNO: CS0001	BLOOMINGTON L55 L55 SITE PLAN	CS01 --- OF TS
NO	DATE	BY	REVISIONS	NO	DATE	BY	REVISIONS	
		ARS	ISSUED FOR BIDDING					



GENERAL NOTES:
 1. DRIVEWAY WIDTH DIMENSIONS ARE GIVEN CURB GUTTER LINE TO CURB GUTTER LINE. THE BIT PAVED DRIVING SURFACE IS 2 FEET LESS THAN THE DIMENSION SHOWN.

KEYNOTES:
 1. NOT USED.
 2.

PL201600213



O:\2014\006 DGCAD\RD\400\SHSHEETS\CS0003.DWG
 PLOTTED: 1/23/2016 2:53:37 PM
 MODIFIED: 1/17/2016 2:05:51 PM

<p style="text-align: center;">PRELIMINARY NOT FOR CONSTRUCTION</p>				DESIGNED ARS		DATE 1/23/2016		BY JJC		CHECKED KJA		DATE 1/23/2016		PROJECT NO. 808400		PROJECT NAME BLOOMINGTON L55		SHEET NO. CS003		SHEET TOTAL OF TS	
				DATE 1/23/2016		BY JJC		CHECKED KJA		DATE 1/23/2016		PROJECT NO. 808400		PROJECT NAME BLOOMINGTON L55		SHEET NO. CS003		SHEET TOTAL OF TS			