

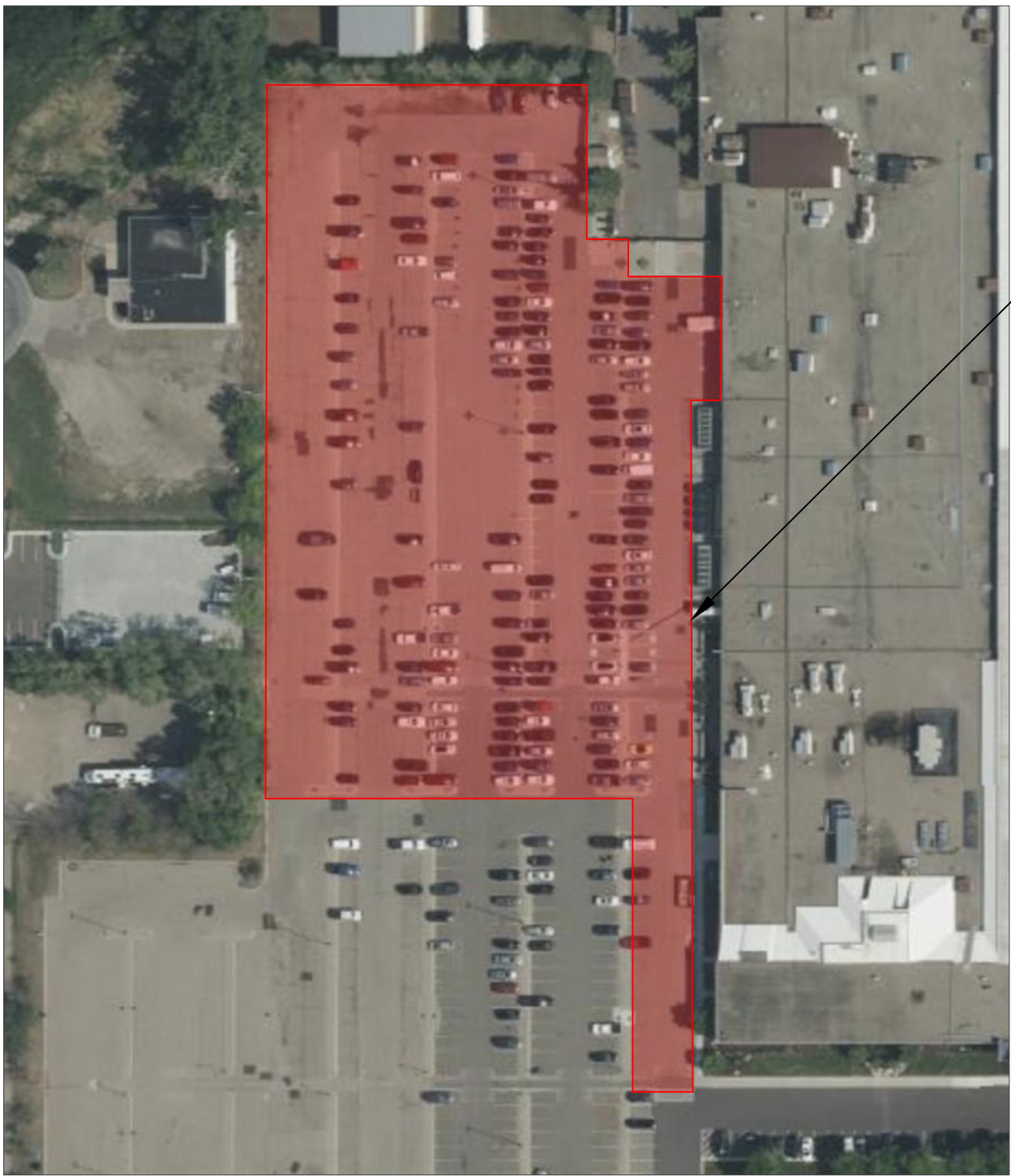
Maintain emergency vehicle access and circulation throughout the property.

Ensure landscaping doesn't interfere with access to the building, hydrants and/or FDC.

Show existing storm sewer on plans.

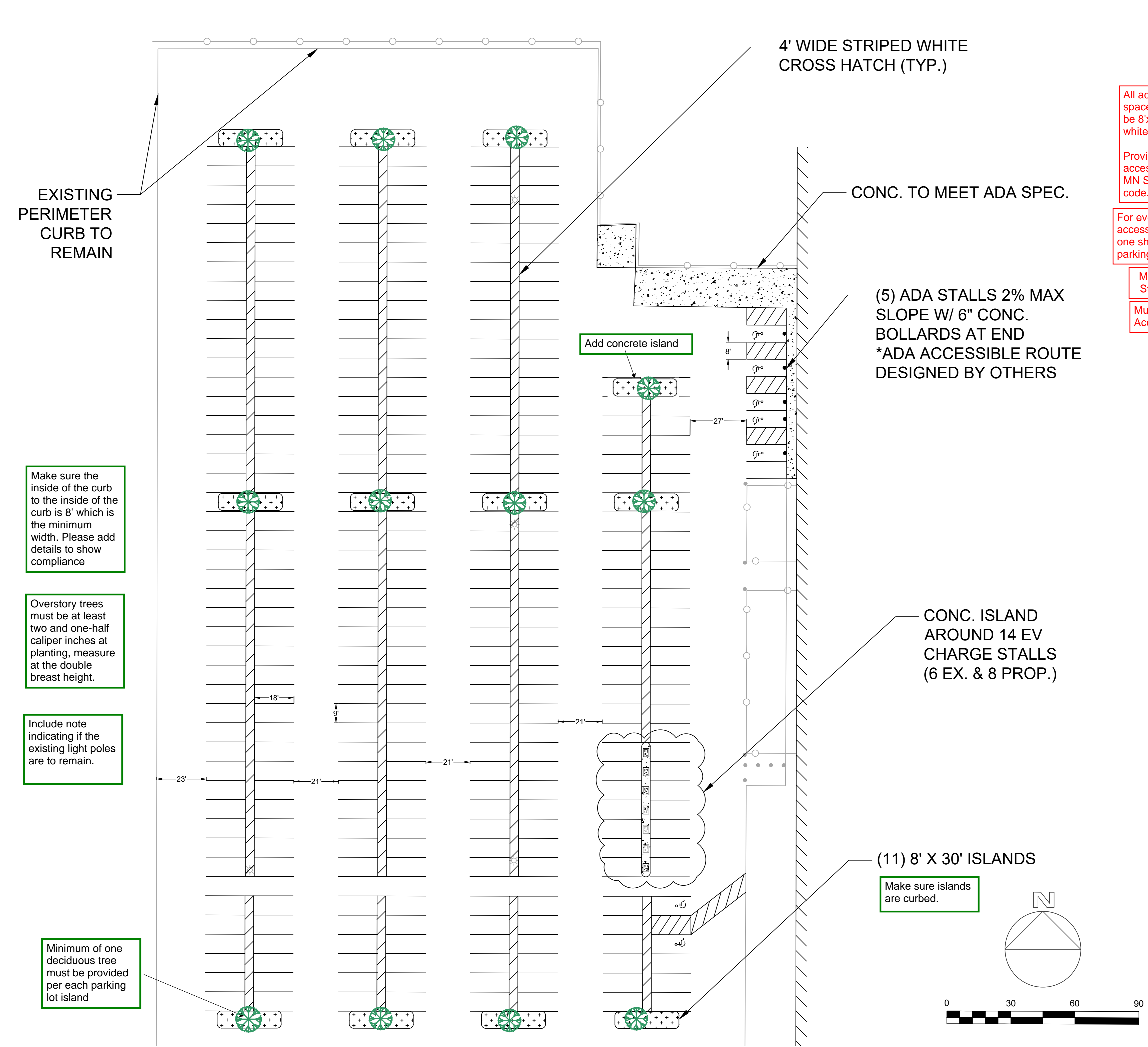
Show proposed modifications to existing storm sewer on plans.

Show inlet protection locations on plans.



4" ASPHALT REPLACEMENT
(122,201 SF)

FULL SITE
1"=100'



All accessible parking spaces for public use shall be 8'x18' and striped in white.

Provide required accessible stalls per 2020 MN State Accessibility code.

For every 6 or fraction of 6 accessible spaces, at least one shall be a van-accessible parking space.

Must meet 2020 MN State Building Code

Must meet 2020 MN Accessibility Code.

Make sure the inside of the curb to the inside of the curb is 8' which is the minimum width. Please add details to show compliance

Overstory trees must be at least two and one-half caliper inches at planting, measure at the double breast height.

Include note indicating if the existing light poles are to remain.

Minimum of one deciduous tree must be provided per each parking lot island

Make sure islands are curbed.