

# SOUTHTOWN SHOPPING CENTER 5TH ADDITION

C.R. DOC. NO. \_\_\_\_\_

KNOW ALL BY THESE PRESENTS: That Kraus-Anderson, Incorporated, a Minnesota corporation, owner of the following described property:

Lot 1, Block 1, Southtown Shopping Center 3rd Addition, Hennepin County, Minnesota.

Has caused the same to be surveyed and platted as SOUTHTOWN SHOPPING CENTER 5TH ADDITION, and does hereby dedicate to the public for public use the drainage and utility easements created by this plat.

In witness whereof said Kraus-Anderson, Incorporated, a Minnesota corporation, has caused these presents to be signed by its proper officer this \_\_\_\_\_ day of \_\_\_\_\_, 20\_\_\_\_.

Signed: Kraus-Anderson, Incorporated, a Minnesota corporation,

BY \_\_\_\_\_ of Kraus-Anderson, Incorporated, a Minnesota corporation.

STATE OF \_\_\_\_\_  
COUNTY OF \_\_\_\_\_

The foregoing instrument was acknowledged before me on this \_\_\_\_\_ day of \_\_\_\_\_, 20\_\_\_\_, by \_\_\_\_\_ of Kraus-Anderson, Incorporated, a Minnesota corporation.

Signature of Notary

Printed Name of Notary

Notary Public \_\_\_\_\_ County, \_\_\_\_\_  
My commission expires \_\_\_\_\_

I, Eric A. Roeser do hereby certify that this plat was prepared by me or under my direct supervision; that I am a duly Licensed Land Surveyor in the State of Minnesota; that this plat is a correct representation of the boundary survey; that all mathematical data and labels are correctly designated on this plat; that all monuments depicted on this plat have been, or will be correctly set within one year; that all water boundaries and wet lands, as defined in Minnesota Statutes, Section 505.01, Subd. 3, as of the date of this certificate are shown and labeled on this plat; and all public ways are shown and labeled on this plat.

Dated this \_\_\_\_\_, day of \_\_\_\_\_, 20\_\_\_\_.

Eric A. Roeser, Licensed Land Surveyor  
Minnesota License No. 47476

STATE OF \_\_\_\_\_  
COUNTY OF \_\_\_\_\_

This instrument was acknowledged before me on this \_\_\_\_\_ day of \_\_\_\_\_, 20\_\_\_\_, by Eric A. Roeser, a Licensed Land Surveyor.

Signature of Notary

Printed Name of Notary

Notary Public \_\_\_\_\_ County, \_\_\_\_\_  
My commission expires \_\_\_\_\_

CITY COUNCIL, CITY OF BLOOMINGTON, MINNESOTA

This plat of SOUTHTOWN SHOPPING CENTER 5TH ADDITION was approved and accepted by the City Council of the City of Plymouth, Minnesota at a regular meeting thereof held

this \_\_\_\_\_ day of \_\_\_\_\_, 20\_\_\_\_, and said plat is in compliance with the provisions of Minnesota Statutes, Section 505.03, Subd. 2.

City Council, City of BLOOMINGTON, Minnesota

By \_\_\_\_\_, Mayor By \_\_\_\_\_, Clerk

RESIDENT AND REAL ESTATE SERVICES  
Hennepin County, Minnesota

I hereby certify that taxes payable in 20\_\_\_\_ and prior years have been paid for land described on this plat, dated this \_\_\_\_\_ day of \_\_\_\_\_, 20\_\_\_\_.

Daniel Rogan, County Auditor By \_\_\_\_\_, Deputy

SURVEY DIVISION  
Hennepin County, Minnesota

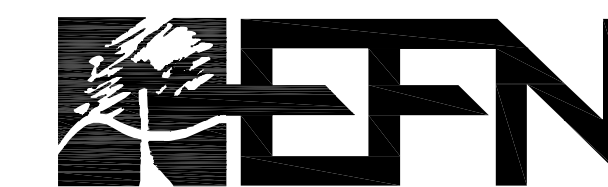
Pursuant to MN. STAT. Sec. 383B.565 (1969), this plat has been approved this \_\_\_\_\_ day of \_\_\_\_\_, 20\_\_\_\_.

Chris F. Mavis, County Surveyor By \_\_\_\_\_

COUNTY RECORDER  
Hennepin County, Minnesota

I hereby certify that the within plat of KATE LORRAINE was recorded in this office this \_\_\_\_\_ day of \_\_\_\_\_, 20\_\_\_\_, at o'clock \_\_\_\_M.

Amber Bougie, County Recorder By \_\_\_\_\_, Deputy

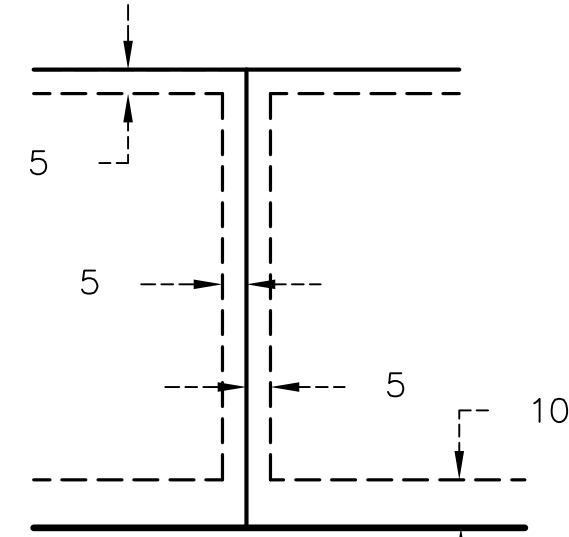


Egan, Field & Nowak, Inc.  
land surveyors since 1872

# SOUTHTOWN SHOPPING CENTER 5TH ADDITION

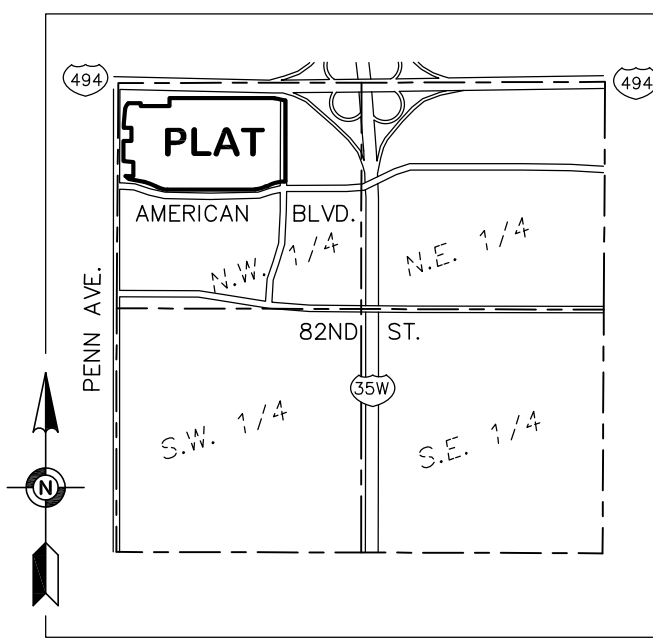
C.R. DOC. NO. \_\_\_\_\_

PROPOSED DRAINAGE AND UTILITY EASEMENTS ARE SHOWN THUS:



BEING 5 FEET IN WIDTH, AND ADJOINING SIDE LOT LINES, AND BEING 10 FEET IN WIDTH AND ADJOINING STREET LINES AS SHOWN ON THE PLAT, UNLESS OTHERWISE INDICATED.

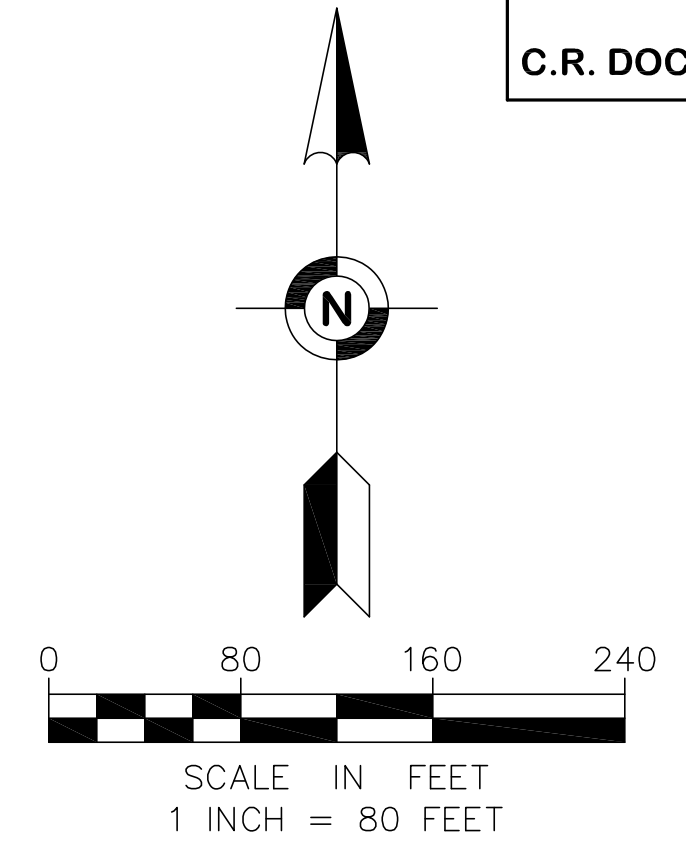
SECTION 04, T 27 N, R 24 W



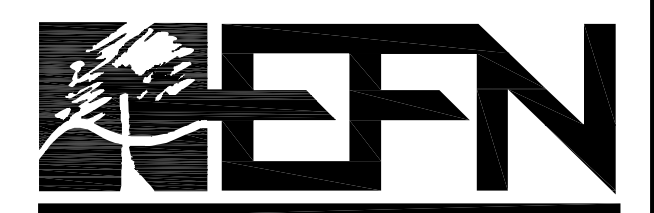
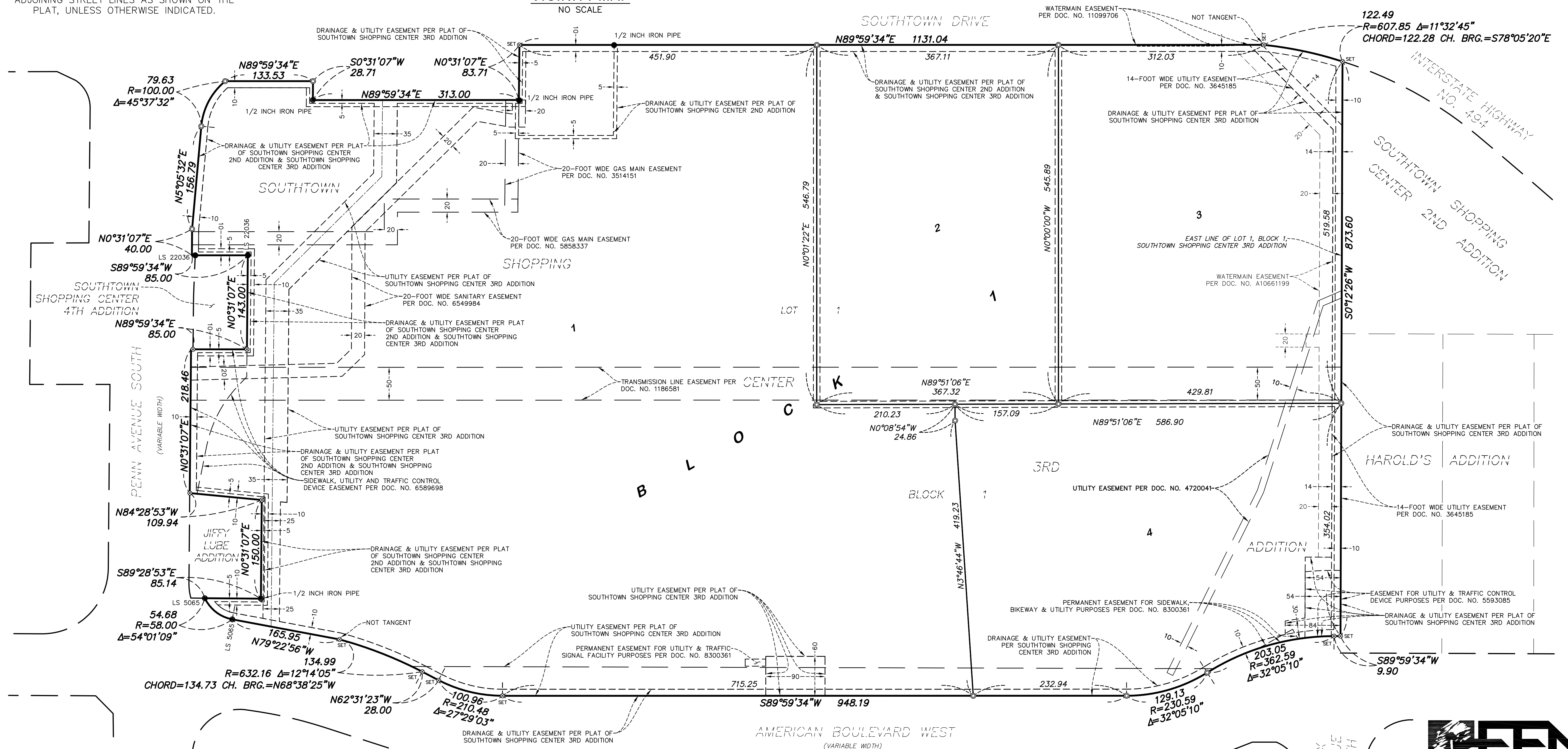
VICINITY MAP  
NO SCALE

- DENOTES FOUND MONUMENT AS NOTED
- ⊙ DENOTES FOUND PK NAIL, UNLESS OTHERWISE NOTED
- ⊙ DENOTES SET 5/8-INCH BY 14-INCH REBAR MARKED WITH LICENSE NUMBER 47476
- ⊙ SET DENOTES SET PK NAIL

INTERSTATE HIGHWAY NO. 494  
(VARIABLE WIDTH)



THE EAST LINE OF LOT 1, BLOCK 1, SOUTHTOWN SHOPPING CENTER 3RD ADDITION, HENNEPIN COUNTY, MINNESOTA IS ASSUMED TO BEAR SOUTH 00 DEGREES 12 MINUTES 26 SECONDS WEST



Egan, Field & Nowak, Inc.  
land surveyors since 1872