

BLOOMINGTON 46TH ADDITION

C.R. DOC. NO. _____

KNOW ALL PERSONS BY THESE PRESENTS: That the City of Bloomington, a Minnesota municipal corporation, fee owner of the following described property:

Lots 1 and 2, Block 1, LEE STAMPING 1ST ADDITION, Hennepin County, Minnesota.

Have caused the same to be surveyed and platted as BLOOMINGTON 46TH ADDITION and do hereby dedicate to the public, for public use, the public ways and the drainage and utility easements as created by this plat.

In witness whereof, said City of Bloomington, a Minnesota municipal corporation, has caused these presents to be signed buy its Mayor and City Manager this _____ day of _____, 20_____.

Signed: City of Bloomington, a Minnesota municipal corporation.

By: _____, Mayor

And by: _____, City Manager

STATE OF MINNESOTA
COUNTY OF _____

This instrument was acknowledged before me this _____ day of _____, 20_____

by _____ its Mayor, and by _____ its City Manager of the City of Bloomington,
a Minnesota municipal corporation on behalf of said corporations

Signature _____ Printed Name _____

Notary Public, _____ County, Minnesota
My Commission Expires _____

SURVEYOR CERTIFICATE AND ACKNOWLEDGEMENT

I, Woodrow A. Brown, do hereby certify that this plat was prepared by me or under my direct supervision; that I am a duly Licensed Land Surveyor in the State of Minnesota; that this plat is a correct representation of the boundary survey; that all mathematical data and labels are correctly designated on this plat; that all monuments depicted on this plat have been, or will be correctly set within one year; that all water boundaries and wet lands, as defined in Minnesota Statutes, Section 505.01 Subd. 3, as of the date of this certificate are shown and labeled on this plat; and all public ways are shown and labeled on this plat.
Dated this _____ day of _____, 20_____.

Woodrow A. Brown, Licensed Land Surveyor
Minnesota License No. 15230

STATE OF MINNESOTA
COUNTY OF _____

This instrument was acknowledged before me this _____ day of _____, 20_____, by Woodrow A. Brown.

Signature _____ Printed Name _____

Notary Public, _____ County, Minnesota
My Commission Expires _____

CITY OF BLOOMINGTON, MINNESOTA

This plat of BLOOMINGTON 46TH ADDITION was approved and accepted by the City Council of the City of Bloomington, Minnesota at a regular meeting thereof held this _____ day of _____, 20_____, and said plat is in compliance with the provisions of Minnesota Statutes, Section 505.03 Subd. 2.

CITY COUNCIL, CITY OF BLOOMINGTON, MINNESOTA

By: _____ Mayor

By: _____ City Manager

COUNTY AUDITOR, Hennepin County, Minnesota

I hereby certify that taxes payable in 20____ and prior years have been paid for land described on this plat, dated this _____ day of _____, 20_____.

Daniel Rogan, County Auditor By: _____ Deputy

SURVEY DIVISION, Hennepin County, Minnesota

Pursuant to MIN. STAT. Sec. 363B.565(1969), this plat has been approved this _____ day of _____, 20_____.

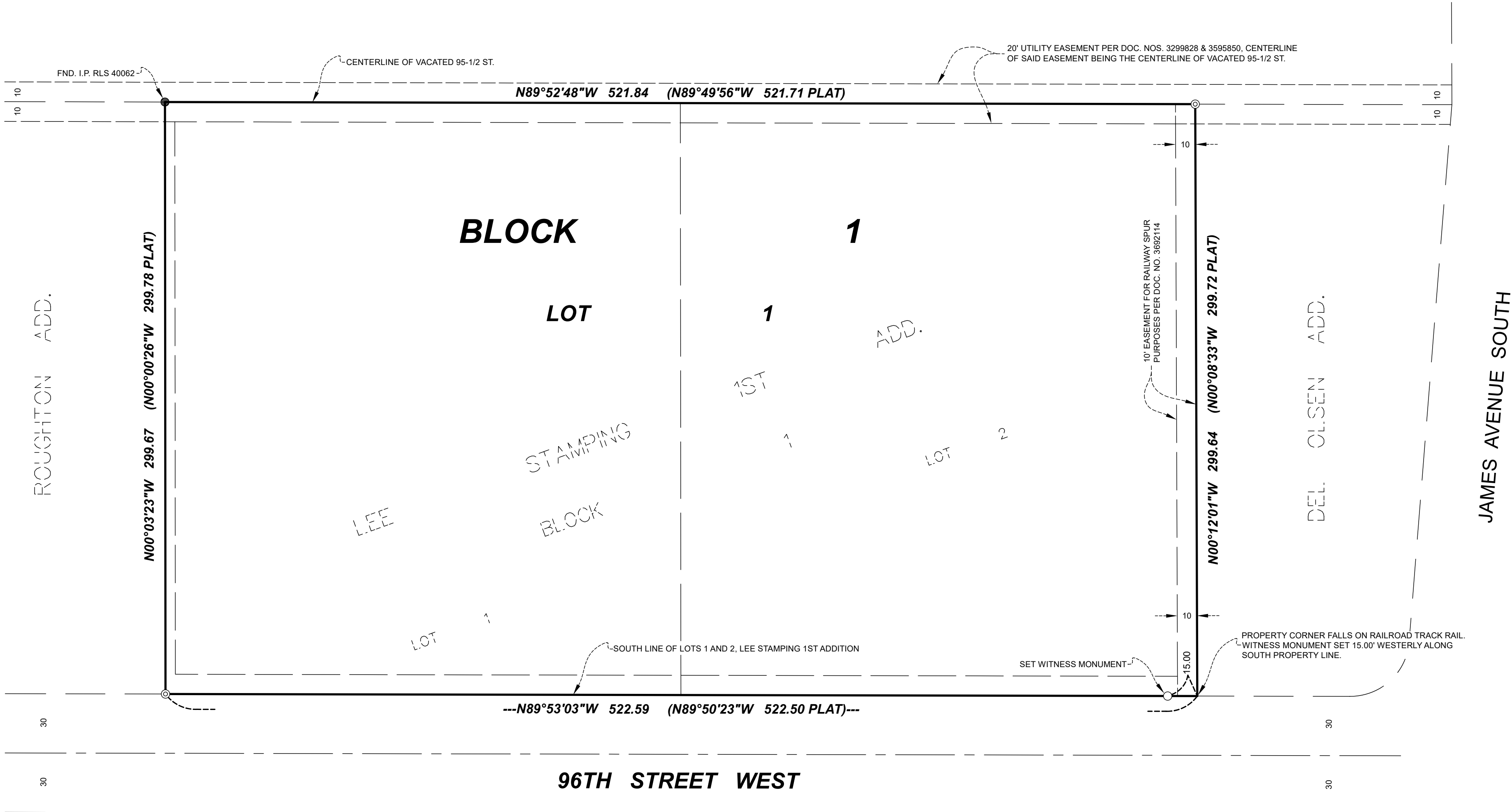
Chris F. Mavis, County Surveyor By: _____

COUNTY RECORDER, Hennepin County, Minnesota

I hereby certify that the within plat of BLOOMINGTON 46TH ADDITION was filed in this office this _____ day of _____, 20_____, at ____ o'clock ____ M.

Amber Bougie, Registrar of Titles By: _____ Deputy

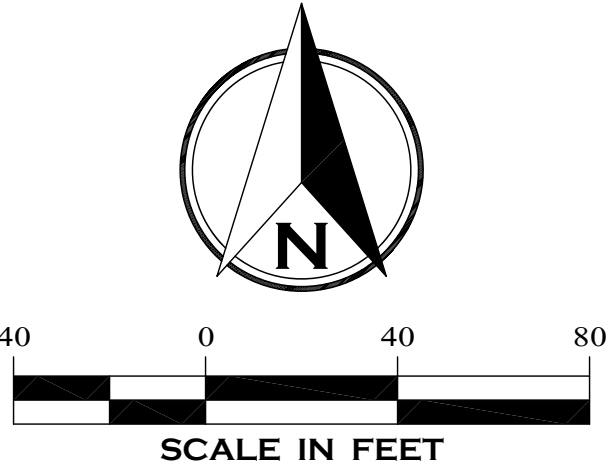
JOHN DEERE 3RD ADD.



LEGEND

- DENOTES SET 1/2 INCH x 14 INCH IRON PIPE MONUMENT INSCRIBED RLS 15230
- ⊙ DENOTES SET MAG NAIL
- DENOTES FOUND IRON MONUMENT AS DENOTED
- (PLAT) REFERS TO DIMENSIONS AS SHOWN ON THE PLAT OF LEE STAMPING 1ST ADDITION

THE SOUTH LINE OF LOTS 1 AND 2, LEE STAMPING 1ST ADDITION, IS ASSUMED TO HAVE A BEARING OF N89°53'03\"/>



DRAINAGE AND UTILITY EASEMENTS ARE SHOWN THUS:

