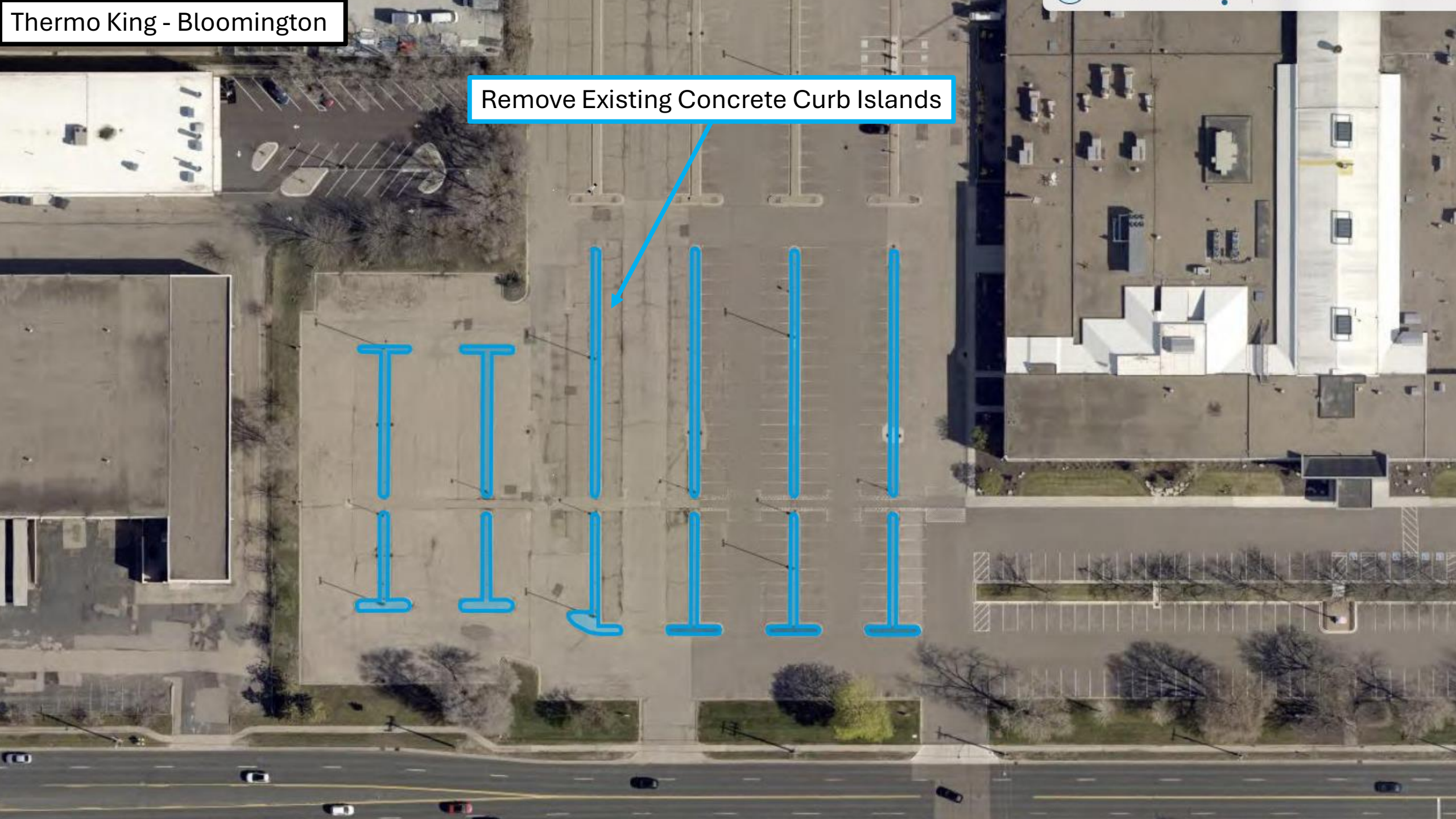
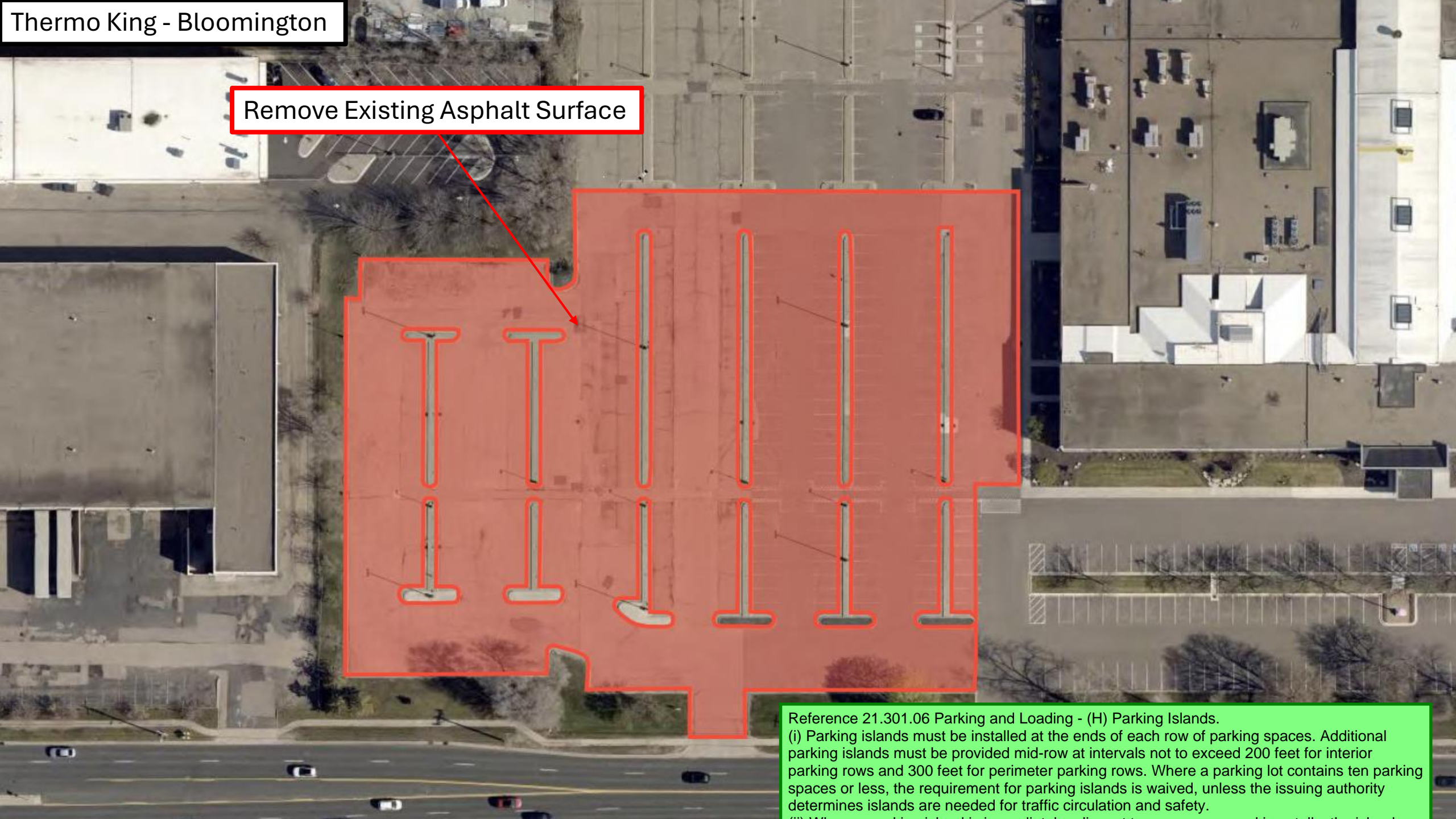


Remove Existing Concrete Curb Islands



Remove Existing Asphalt Surface



Reference 21.301.06 Parking and Loading - (H) Parking Islands.
(i) Parking islands must be installed at the ends of each row of parking spaces. Additional parking islands must be provided mid-row at intervals not to exceed 200 feet for interior parking rows and 300 feet for perimeter parking rows. Where a parking lot contains ten parking spaces or less, the requirement for parking islands is waived, unless the issuing authority determines islands are needed for traffic circulation and safety.

Thermo King - Bloomington

Eliminate Existing Asphalt Parking Lot / Replace as Green Space

Must meet 2020 MN State Building Code

Must meet 2020 MN Accessibility Code.

A Parking Lot permit shall be required for any re-striping.

Provide required accessible stalls per 2020 MN State Accessibility code.

Install New B612 Curb and Gutter

Maintain emergency vehicle access and circulation throughout the property.

Maintain access to all hydrants.

This is a separate platted lot. If chance of selling, make sure new curb meets setback from lot line.

Install new Asphalt Surface (2" Base Lift / 2" Wear Lift)

Landscape plan is needed; reference 21.301.15 Landscaping and Screening.

Parking code analysis is needed. The analysis will determine how many parking spaces is required per uses: sq. ft of 1. Manufacturing. 2. Warehouse/distribution. 3. Office. 4. Total supply of parking on site.

Maintain re strip based of parking lot based on past conditions.

Install (8) 8' x 30' Concrete Curb Islands

Provide grading and restoration plans in future submittals.

Show existing and proposed storm sewer.

Use City Standard detail for Non-Residential Driveway approach if driveway is impacted