

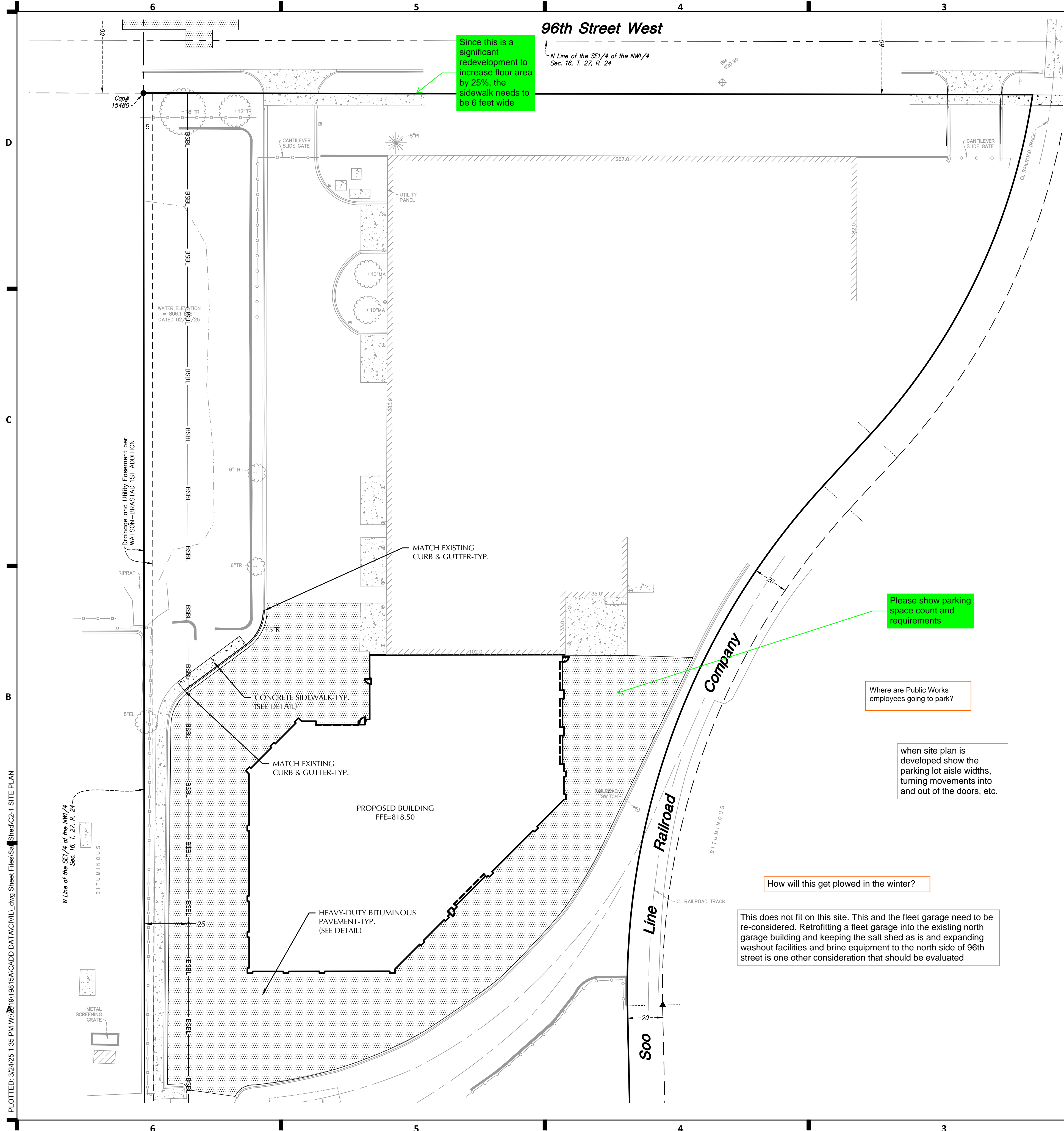


Project name: Bloomington Fleer Repair Facility – Salt Shed

Architectural number: 22263.01

Project Narrative:

The salt shed building is a new single story 23,675 SF cast in place concrete building with a metal roof structure and metal roof deck. The new salt shed will include a salt storage area, vehicle wash down area, brine room and mechanical space. The only portion of the building that is heated is the wash down area, brine room and mechanical spaces. The building is a one-story building that is fully sprinklered with a dry system in the salt storage area and a wet system within the heated areas of the building.



CALL BEFORE YOU DIG!
Gopher State One Call
TWIN CITY AREA: 651-454-0002
TOLL FREE: 1-800-252-1166

WARNING:
THE CONTRACTOR SHALL BE RESPONSIBLE FOR CALLING FOR LOCATIONS OF ALL EXISTING UTILITIES. THEY SHALL COOPERATE WITH ALL UTILITY COMPANIES IN MAINTAINING THEIR SERVICE AND / OR RELOCATION OF LINES.

THE CONTRACTOR SHALL CONTACT GOPHER STATE ONE CALL AT 651-454-0002 AT LEAST 48 HOURS IN ADVANCE FOR THE LOCATIONS OF ALL UNDERGROUND WIRES, CABLES, CONDUITS, PIPES, MANHOLES, VALVES OR OTHER BURIED STRUCTURES BEFORE DIGGING. THE CONTRACTOR SHALL REPAIR OR REPLACE THE ABOVE WHEN DAMAGED DURING CONSTRUCTION AT NO COST TO THE OWNER.

Emergency responder radio coverage meeting the requirements of appendix P in the 2020 MSFC shall be provided throughout the property and within the structures.

Please show parking space count and requirements

Where are Public Works employees going to park?

when site plan is developed show the parking lot aisle widths, turning movements into and out of the doors, etc.

How will this get plowed in the winter?

This does not fit on this site. This and the fleet garage need to be re-considered. Retrofitting a fleet garage into the existing north garage building and keeping the salt shed as is and expanding washout facilities and brine equipment to the north side of 96th street is one other consideration that should be evaluated

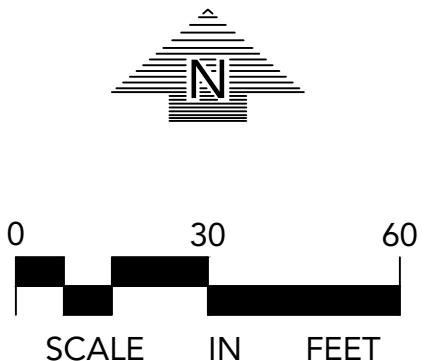
LEGEND	
CATCH BASIN	PROPOSED
STORM MANHOLE	
FLARED END SECTION	
SANITARY MANHOLE	
HYDRANT	
GATE VALVE	
POST INDICATOR VALVE	
WATER MANHOLE / WELL	
LIGHT POLE	
POWER POLE	
ELECTRIC METER	
GAS METER	
TELEPHONE PEDESTAL	
SIGN	
BENCHMARK	
SOIL BORING	
PARKING STALL COUNT	
ACCESSIBLE PARKING STALL	
STORM SEWER	
DRAINTILE	
SANITARY SEWER	
FORCEMAIN	
WATERMAIN	
SANITARY SEWER SERVICE	
WATER SERVICE	
UNDERGROUND ELECTRIC	
UNDERGROUND FIBER OPTIC	
UNDERGROUND GAS	
UNDERGROUND TELEPHONE	
OVERHEAD UTILITY	
FENCE	
CHAIN LINK FENCE	
CONCRETE CURB	
RETAINING WALL	
CONCRETE	
NO PARKING	
BUILDING	
CONTOUR	
SPOT ELEVATION	
DIRECTION OF FLOW	
TREE LINE	
PARKING SETBACK LINE	
BUILDING SETBACK LINE	

PAVEMENT TYPES	
	CONCRETE SIDEWALK
	CONCRETE PAVEMENT
	STANDARD BITUMINOUS PAVEMENT
	HEAVY DUTY BITUMINOUS PAVEMENT
	BITUMINOUS TRAIL PAVEMENT

NOTE:
SEE PAVEMENT SECTIONS ON DETAIL SHEET C8-1 FOR TYPE AND DEPTH INFORMATION.

CURB TYPES	
	B612 CURB & GUTTER (STANDARD)
	B612 CURB & GUTTER (TIP OUT)
	FLAT CURB & GUTTER (STANDARD)
	FLAT CURB & GUTTER (TIP OUT)

NOTE:
SEE CURB & GUTTER DETAILS ON DETAIL SHEET



NOTE:
EXISTING CONDITIONS INFORMATION SHOWN IS FROM A PARTIAL BOUNDARY AND TOPOGRAPHIC SURVEY PREPARED BY LOUCKS, INC. DATED 02/20/25.

I hereby certify that this plan, specification or report was prepared by me or under my direct supervision and that I am a duly Licensed Professional Engineer under the laws of the State of Minnesota.	
Michael J. St. Martin - PE	24440
License No.	Date
Loucks Project No.	19815.0A
Project Lead	MJS
Drawn By	SLP
Checked By	MJS
Review Date	



710 South 2nd Street, 8th Floor
Minneapolis, MN 55401
phone: (612) 746-4260

www.jlgarchitects.com
copyright © 2024
LOUCKS
CIVIL ENGINEERING
LAND SURVEYING
LANDSCAPE ARCHITECTURE
12755 Hwy 55, Suite R100
Plymouth, MN 55441
763.424.5505
www.loucksinc.com

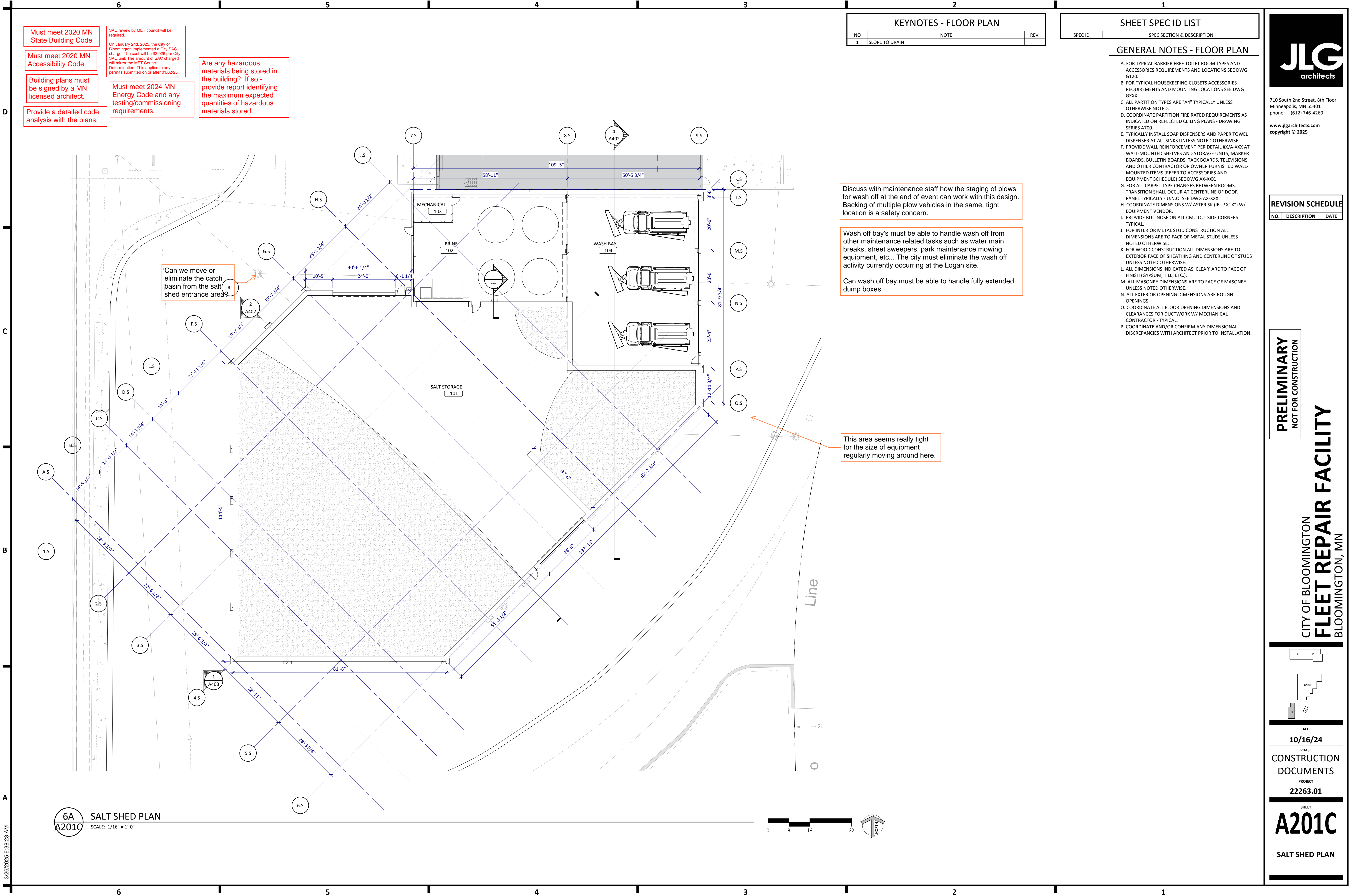
REVISION SCHEDULE		
NO.	DESCRIPTION	DATE

PRELIMINARY
NOT FOR CONSTRUCTION

CITY OF BLOOMINGTON
FLEET REPAIR FACILITY
BLOOMINGTON, MN

A	B
C	D
DATE	
01/09/2025	
PHASE	
DESIGN DEVELOPMENT	
PROJECT	
22263.01	
SHEET	

C2-1
SITE PLAN



KEYNOTES - FLOOR PLAN		
NO	NOTE	REV.
1	SLOPE TO DRAIN	

SHEET SPEC ID LIST	
SPEC ID	SPEC SECTION & DESCRIPTION

GENERAL NOTES - FLOOR PLAN

- A. FOR TYPICAL BARRIER FREE TOILET ROOM TYPES AND ACCESSORIES REQUIREMENTS AND LOCATIONS SEE DWG G120.
- B. FOR TYPICAL HOUSEKEEPING CLOSETS ACCESSORIES REQUIREMENTS AND MOUNTING LOCATIONS SEE DWG GXXX.
- C. ALL PARTITION TYPES ARE "A4" TYPICALLY UNLESS OTHERWISE NOTED.
- D. COORDINATE PARTITION FIRE RATED REQUIREMENTS AS INDICATED ON REFLECTED CEILING PLANS - DRAWING SERIES A700.
- E. TYPICALLY INSTALL SOAP DISPENSERS AND PAPER TOWEL DISPENSER AT ALL SINKS UNLESS NOTED OTHERWISE.
- F. PROVIDE WALL REINFORCEMENT PER DETAIL #X/A-XXX AT WALL-MOUNTED SHELVES AND STORAGE UNITS, MARKER BOARDS, BULLETIN BOARDS, TACK BOARDS, TELEVISIONS AND OTHER CONTRACTOR OR OWNER FURNISHED WALL-MOUNTED ITEMS (REFER TO ACCESSORIES AND EQUIPMENT SCHEDULE) SEE DWG AX-XXX.
- G. FOR ALL CARPET TYPE CHANGES BETWEEN ROOMS, TRANSITION SHALL OCCUR AT CENTERLINE OF DOOR PANEL TYPICALLY - U.N.O. SEE DWG AX-XXX.
- H. COORDINATE DIMENSIONS W/ ASTERISK (IE - *X'-X") W/ EQUIPMENT VENDOR.
- I. PROVIDE BULLNOSE ON ALL CMU OUTSIDE CORNERS - TYPICAL.
- J. FOR INTERIOR METAL STUD CONSTRUCTION ALL DIMENSIONS ARE TO FACE OF METAL STUDS UNLESS NOTED OTHERWISE.
- K. FOR WOOD CONSTRUCTION ALL DIMENSIONS ARE TO EXTERIOR FACE OF SHEATHING AND CENTERLINE OF STUDS UNLESS NOTED OTHERWISE.
- L. ALL DIMENSIONS INDICATED AS 'CLEAR' ARE TO FACE OF FINISH (GYPSUM, TILE, ETC.).
- M. ALL MASONRY DIMENSIONS ARE TO FACE OF MASONRY UNLESS NOTED OTHERWISE.
- N. ALL EXTERIOR OPENING DIMENSIONS ARE ROUGH OPENINGS.
- O. COORDINATE ALL FLOOR OPENING DIMENSIONS AND CLEARANCES FOR DUCTWORK W/ MECHANICAL CONTRACTOR - TYPICAL.
- P. COORDINATE AND/OR CONFIRM ANY DIMENSIONAL DISCREPANCIES WITH ARCHITECT PRIOR TO INSTALLATION.



710 South 2nd Street, 8th Floor
Minneapolis, MN 55401
phone: (612) 746-4260
www.jlgarchitects.com
copyright © 2025

REVISION SCHEDULE		
NO.	DESCRIPTION	DATE

PRELIMINARY
NOT FOR CONSTRUCTION

CITY OF BLOOMINGTON
FLEET REPAIR FACILITY
BLOOMINGTON, MN

A

B

EXIST.

C

D

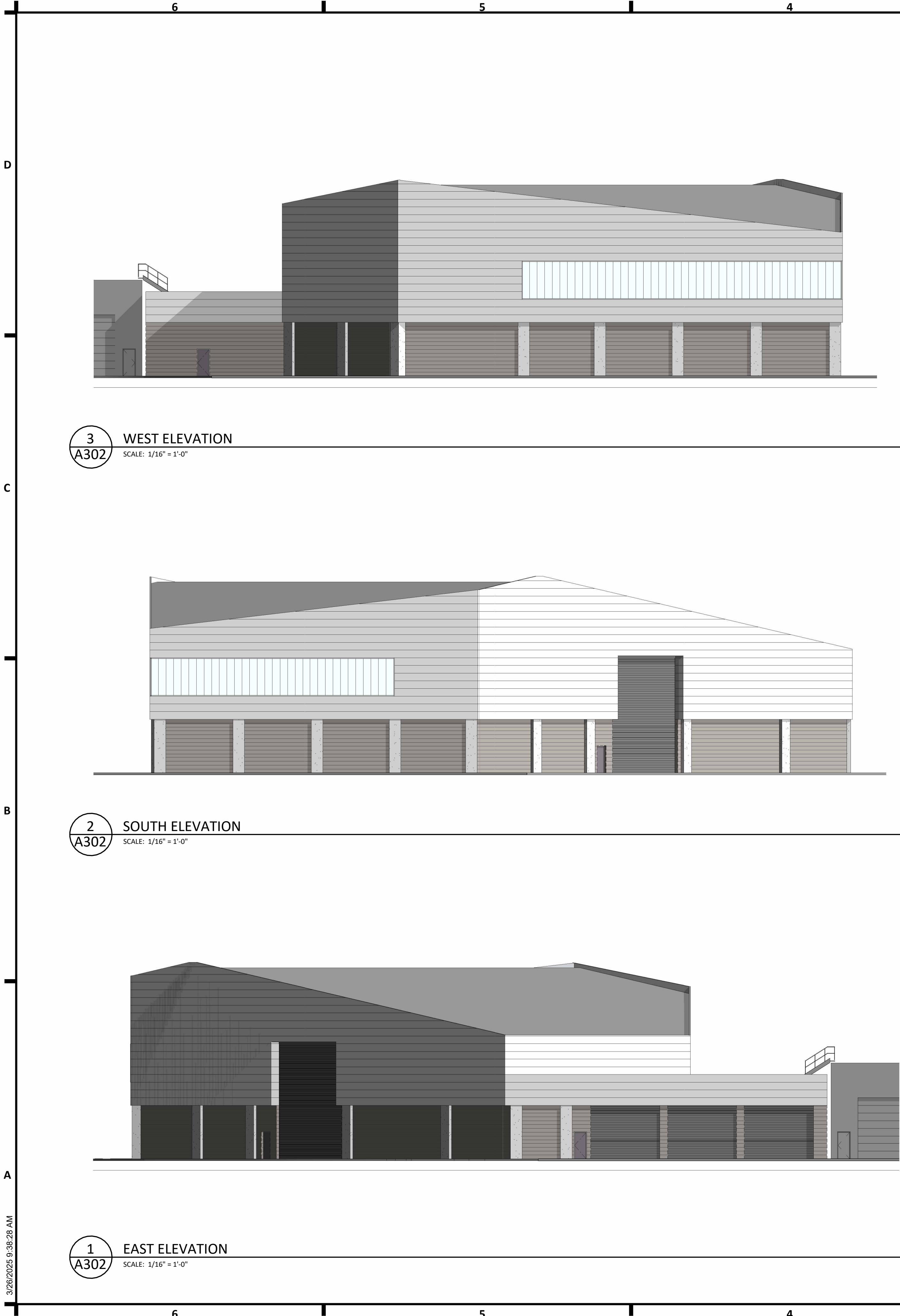
DATE
10/16/24

PHASE
CONSTRUCTION DOCUMENTS

PROJECT
22263.01

SHEET
A201C

SALT SHED PLAN



SHEET SPEC ID LIST	
SPEC ID	SPEC SECTION & DESCRIPTION

KEYNOTES - EXTERIOR ELEV.		
NO	NOTE	REV.

GENERAL NOTES - EXTERIOR ELEVATIONS	
A. REFER TO GLAZING ELEVATIONS FOR STOREFRONT AND CURTAINWALL ELEVATIONS	



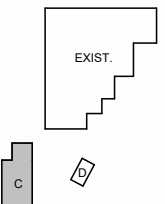
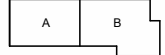
710 South 2nd Street, 8th Floor
Minneapolis, MN 55401
phone: (612) 746-4260

www.jlgarchitects.com
copyright © 2025

REVISION SCHEDULE		
NO.	DESCRIPTION	DATE

PRELIMINARY
NOT FOR CONSTRUCTION

CITY OF BLOOMINGTON
FLEET REPAIR FACILITY
BLOOMINGTON, MN



DATE
10/25/24
PHASE
CONSTRUCTION
DOCUMENTS
PROJECT
22263.01
SHEET
A302
EXTERIOR ELEVATIONS - SALT SHED

3/26/2025 9:38:29 AM

D

C

B

A

6

5

4

3

2

1

SHEET SPEC ID LIST

SPEC ID	SPEC SECTION & DESCRIPTION
---------	----------------------------

6.5

5.5

4.5

3.5

2.5

1.5

1
A403

T.O. SALT SHED ROOF BRG.
EL.= 125' - 0"

T.O. ROOF BRG. @ R/W (EXIST. BRG.)
EL.= 119' - 0"

MAIN FLOOR
EL.= 100' - 0"

BRINE CONTAINMENT LEVEL
EL.= 97' - 0"

2
A402
SALT SHED SOUTHWEST SECTION
SCALE: 1/8" = 1'-0"

K.S

L.S

M.S

N.S

P.S

Q.S

1
A410

T.O. SALT SHED ROOF BRG.
EL.= 125' - 0"

T.O. ROOF BRG. @ R/W (EXIST. BRG.)
EL.= 119' - 0"

MAIN FLOOR
EL.= 100' - 0"

BRINE CONTAINMENT LEVEL
EL.= 97' - 0"

1
A402
SALT SHED EAST SECTION
SCALE: 1/8" = 1'-0"

6

5

4

3

2

1

JLG
architects

710 South 2nd Street, 8th Floor
Minneapolis, MN 55401
phone: (612) 746-4260

www.jlgarchitects.com
copyright © 2025

REVISION SCHEDULE

NO.	DESCRIPTION	DATE
-----	-------------	------

PRELIMINARY
NOT FOR CONSTRUCTION

CITY OF BLOOMINGTON
FLEET REPAIR FACILITY
BLOOMINGTON, MN

A B

EXIST.
C

DATE

10/17/24

PHASE

CONSTRUCTION
DOCUMENTS

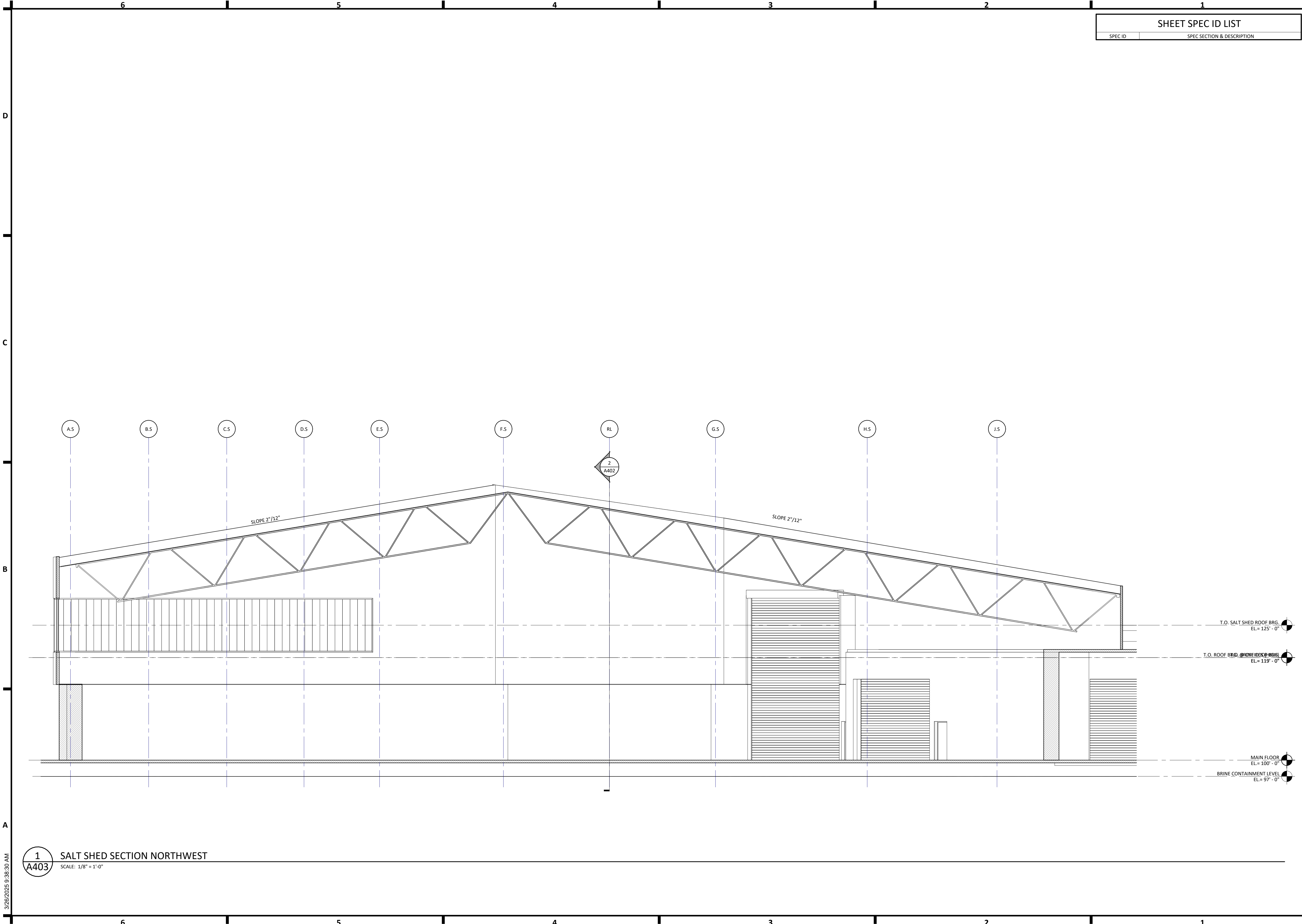
PROJECT

22263.01

SHEET

A402

SALT SHED -
BUILDING SECTIONS



SHEET SPEC ID LIST	
SPEC ID	SPEC SECTION & DESCRIPTION

JLG
architects

710 South 2nd Street, 8th Floor
Minneapolis, MN 55401
phone: (612) 746-4260
www.jlgarchitects.com
copyright © 2025

REVISION SCHEDULE		
NO.	DESCRIPTION	DATE

PRELIMINARY
NOT FOR CONSTRUCTION

CITY OF BLOOMINGTON
FLEET REPAIR FACILITY
BLOOMINGTON, MN

A B

EXIST.

C

DATE
10/17/24

PHASE
CONSTRUCTION DOCUMENTS

PROJECT
22263.01

SHEET
A403

SALT SHED - BUILDING SECTIONS