



**Kwik  
STAR**



**Kwik  
TRIP**

# Site Development Plan Review

---

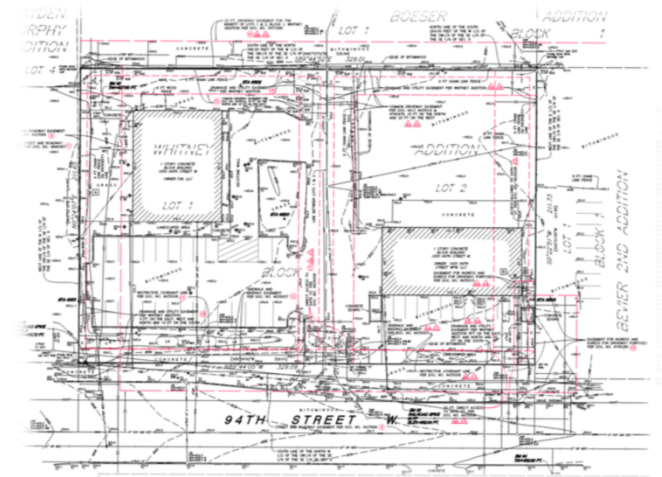
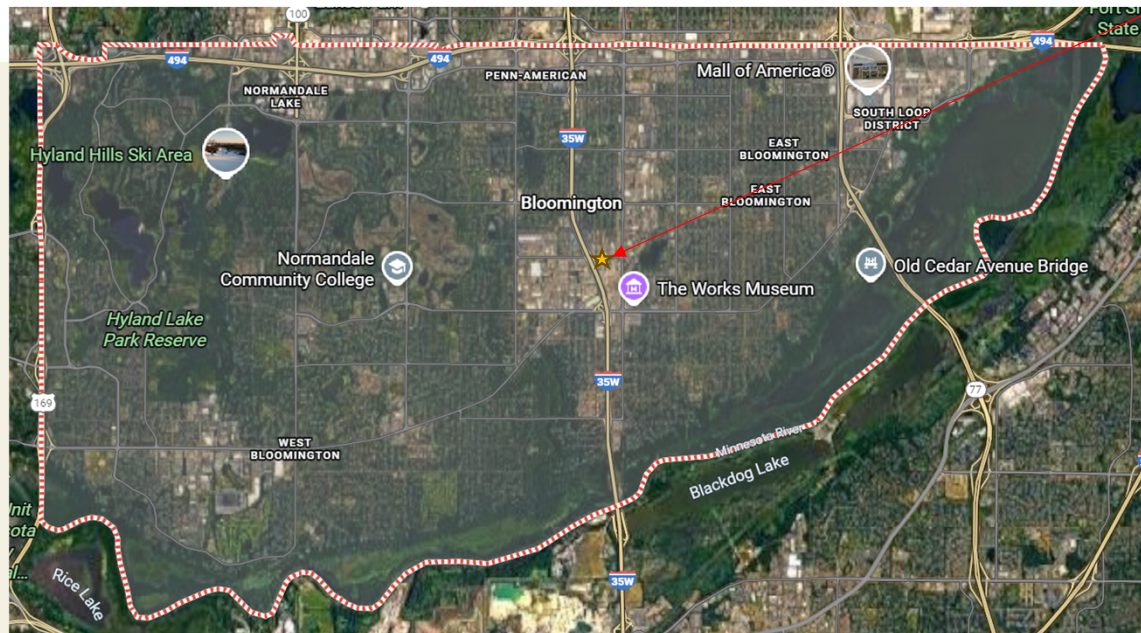
City Bloomington

- Location
- Site Plan
- Exterior Building Details
- Fueling Canopy Details
- Interior Building Details
- Community Benefit

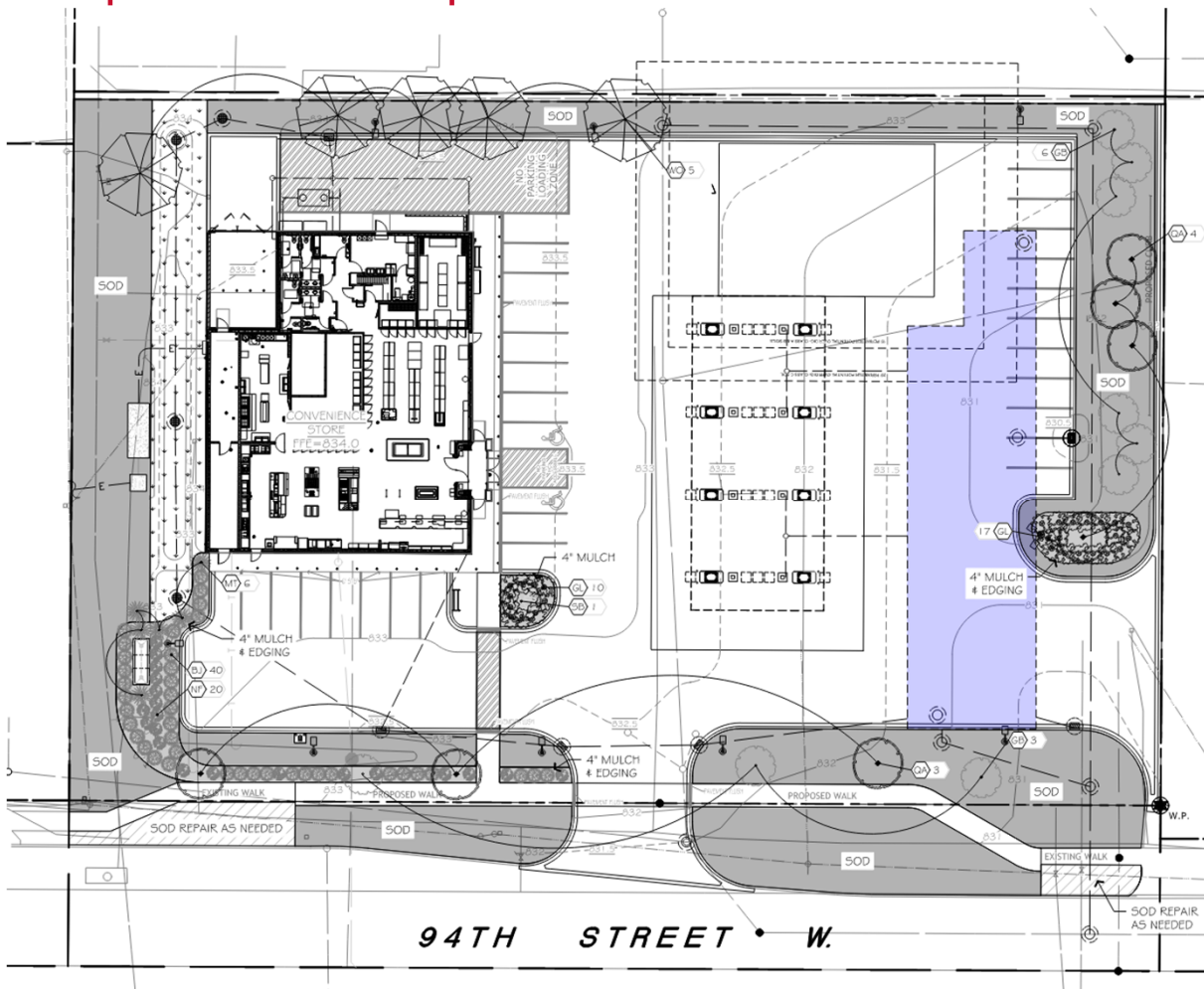


# Project Location

- Along W 94<sup>th</sup> St.



## Proposed Kwik Trip Site Plan



### Details

- Gen 2 Convenience Store
- 8 Dispenser Fueling Canopy
- Picnic Area
- Pylon Sign
- 1 Access Points
- 69,657 SF





## Exterior Building Details

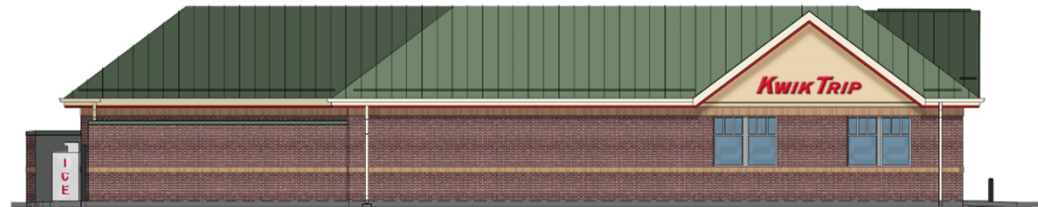
- 7,350 SF
- Brick Façade
- Green Metal Roofing
- Almond Fascia & Soffit
- LED Building Signs



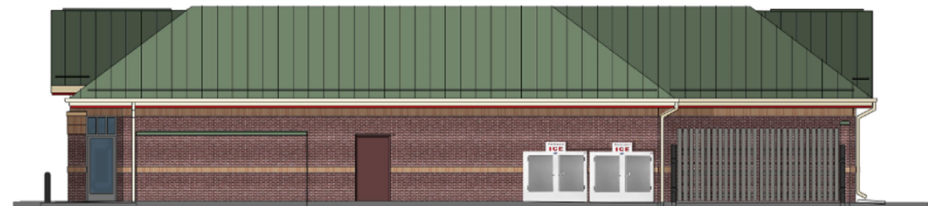
1 FRONT ELEVATION



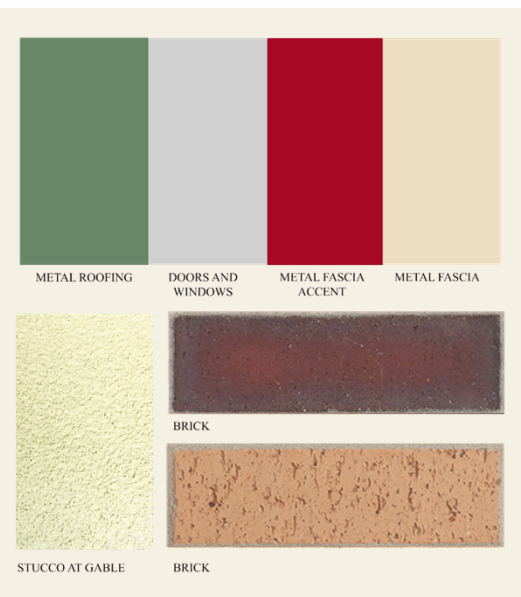
2 LEFT ELEVATION



3 REAR ELEVATION



4 RIGHT ELEVATION





## Fueling Canopy Details



### Details

- 3801 SF Gas Fueling Canopy with 8 pumps & 16 Fueling Positions
- LED Letters and Red Stripe
- Almond Fascia
- Canopy Columns wrapped aluminum
- Underground Storage Tanks (Qty 5)





- 24 Hours of Operation
- Clean Restrooms
- Hot Food
- Fresh Produce, Bakery & Dairy
- Vertically Integrated Products





## Community Benefit

- Approximately 25 to 35 new permanent jobs
- Projected payroll is estimated to be approximately \$600,000 annually
- Partner with local food banks to pick up food donations
- Community Charitable Donations
- Kwik Trip is a Wisconsin based family-owned Company

## Construction Project Info

- Project projected to start spring of 2027
- 4-month construction schedule
- Estimated to be a \$2,000,000 development/improvement
- Coordination with city and neighbors will be done during construction to cut down on road conflict due to construction activities

