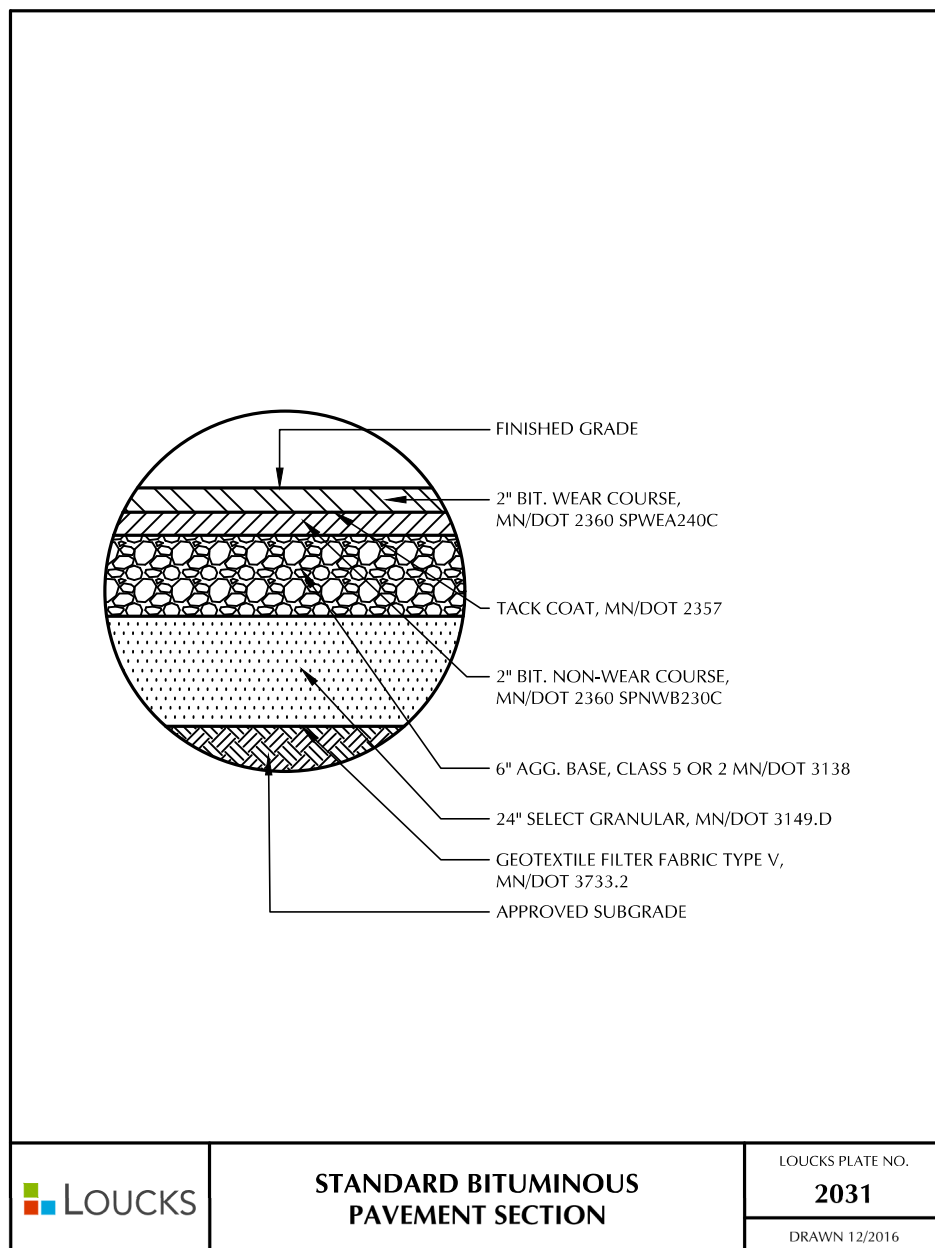
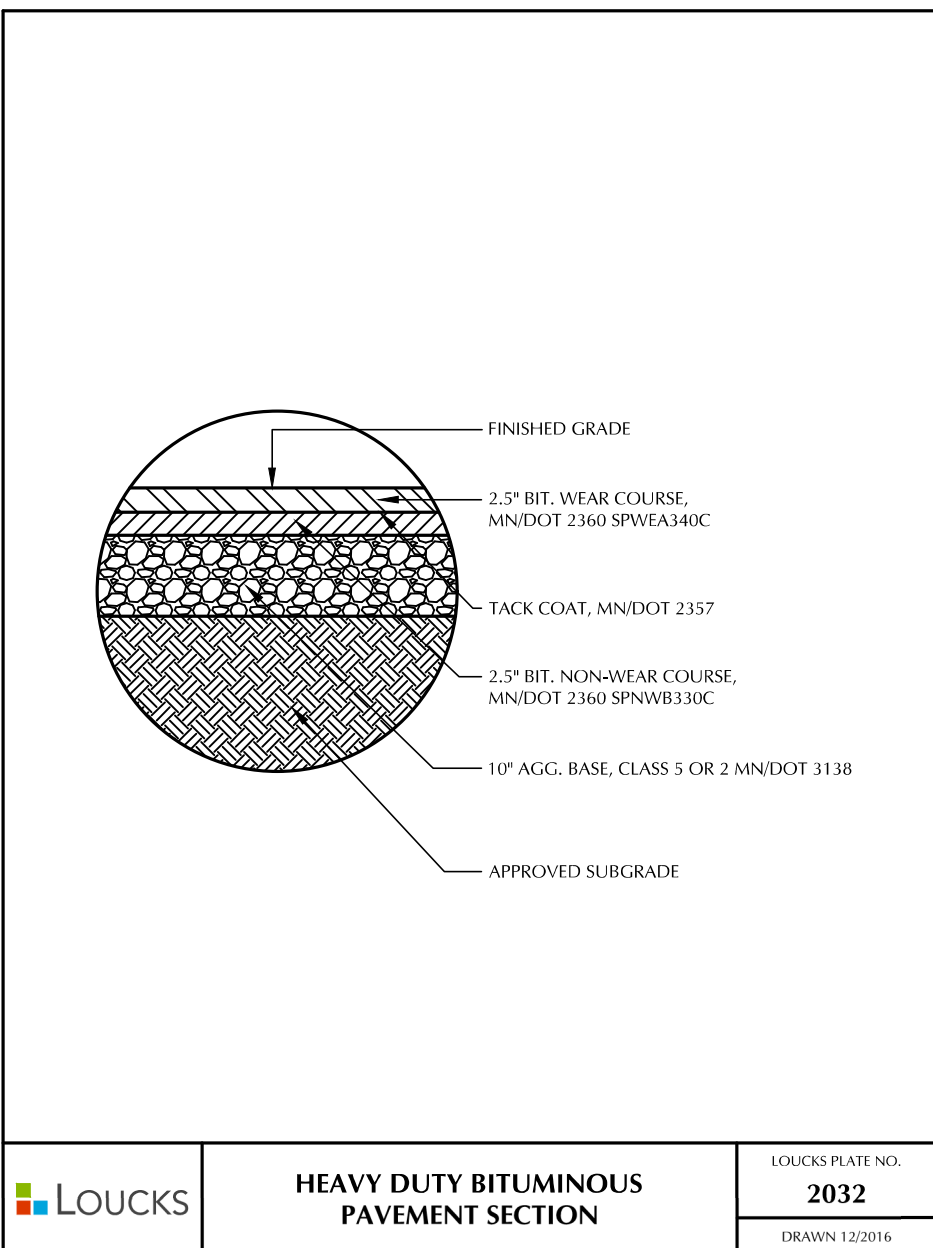


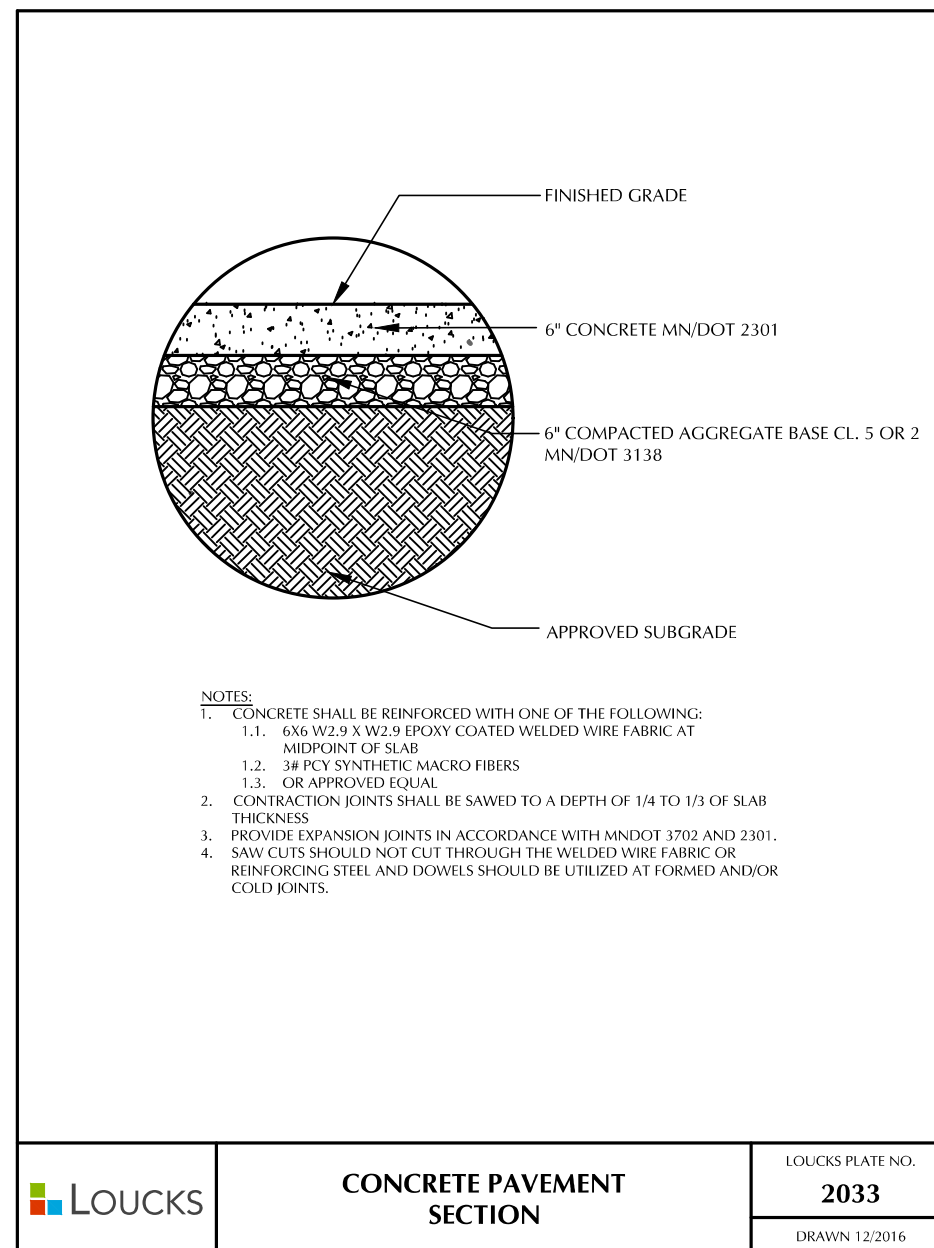
D



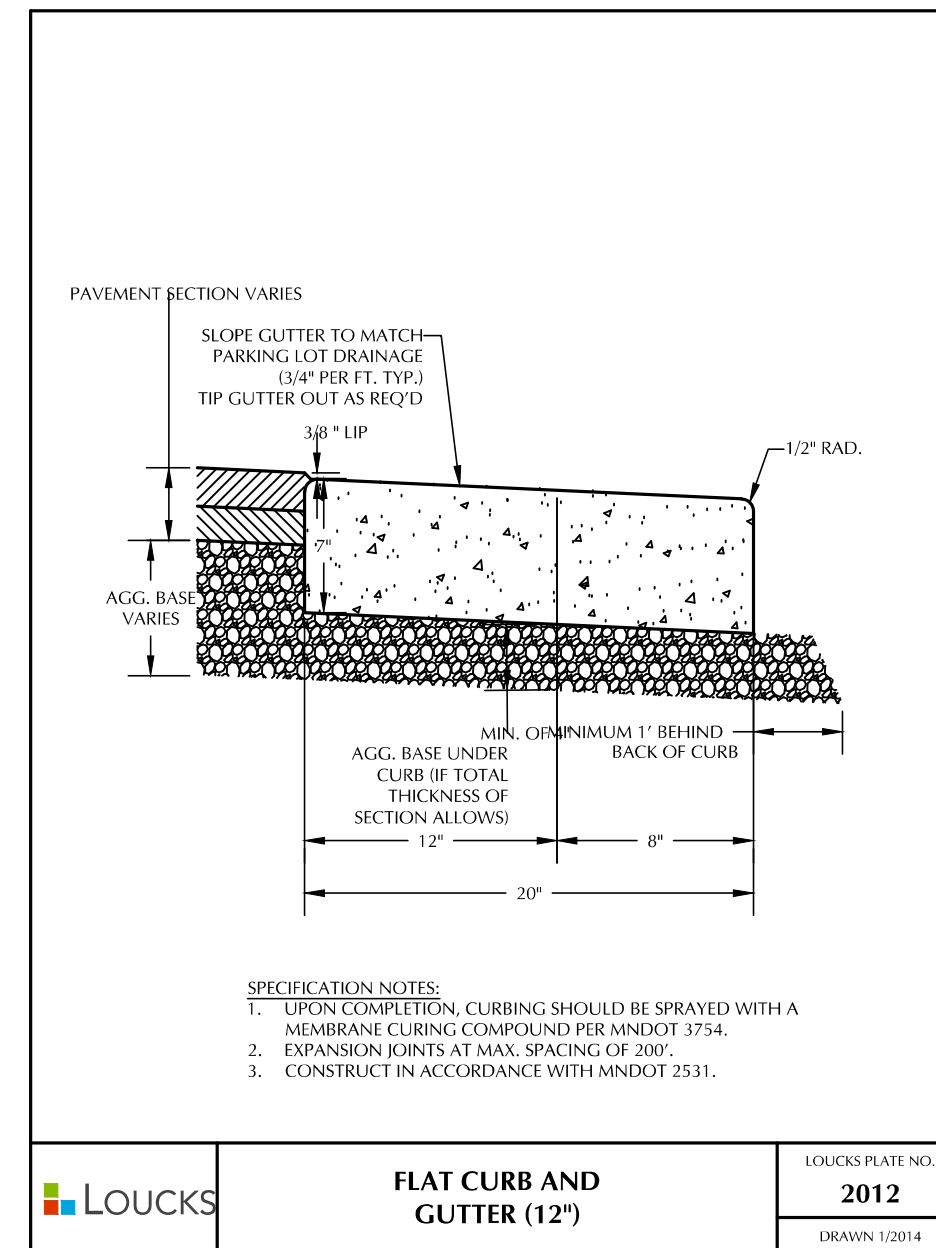
STANDARD BITUMINOUS PAVEMENT SECTION
 LOCKS PLATE NO. 2031
 DRAWN 12/2016



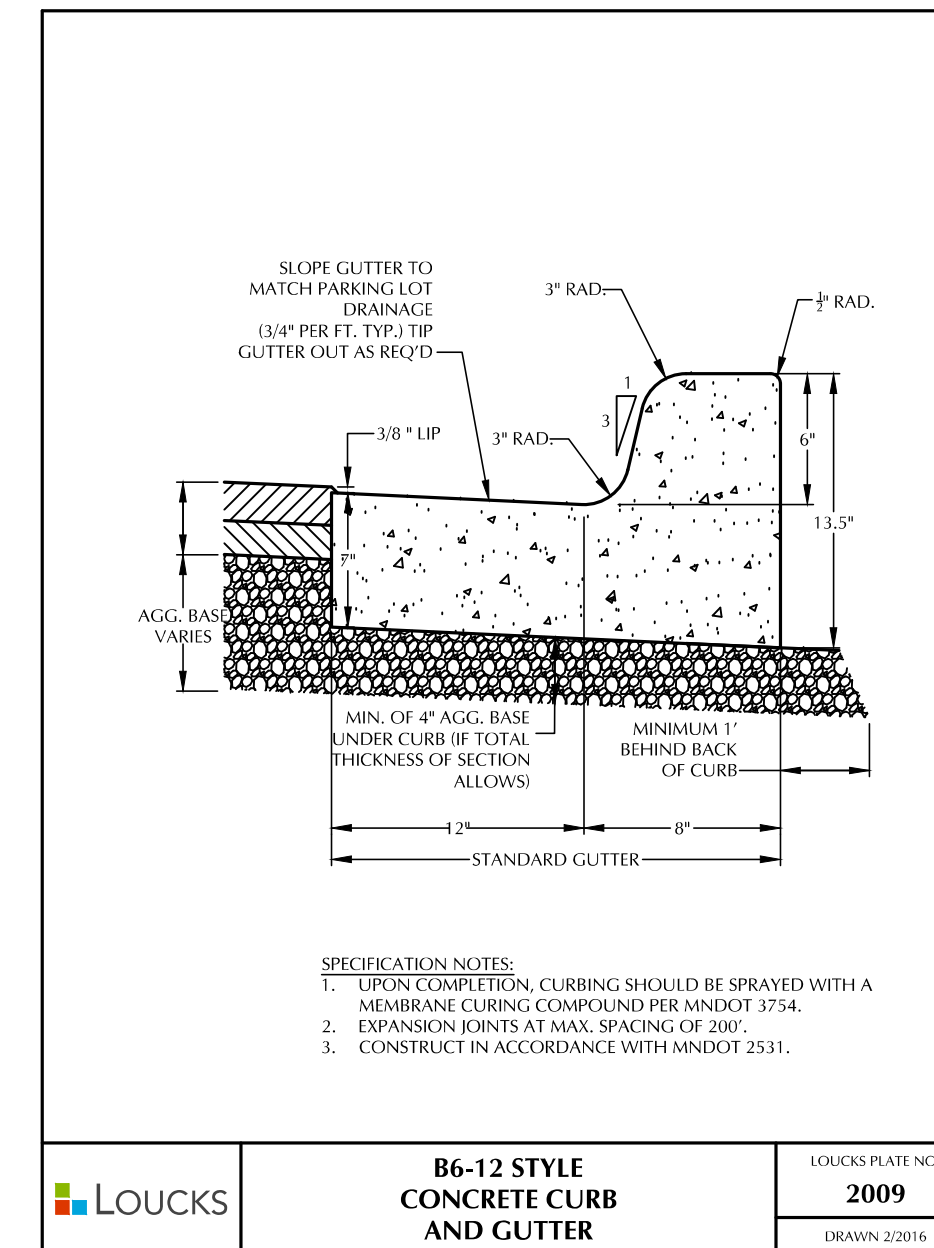
HEAVY DUTY BITUMINOUS PAVEMENT SECTION
 LOCKS PLATE NO. 2032
 DRAWN 12/2016



CONCRETE PAVEMENT SECTION
 LOCKS PLATE NO. 2033
 DRAWN 12/2016

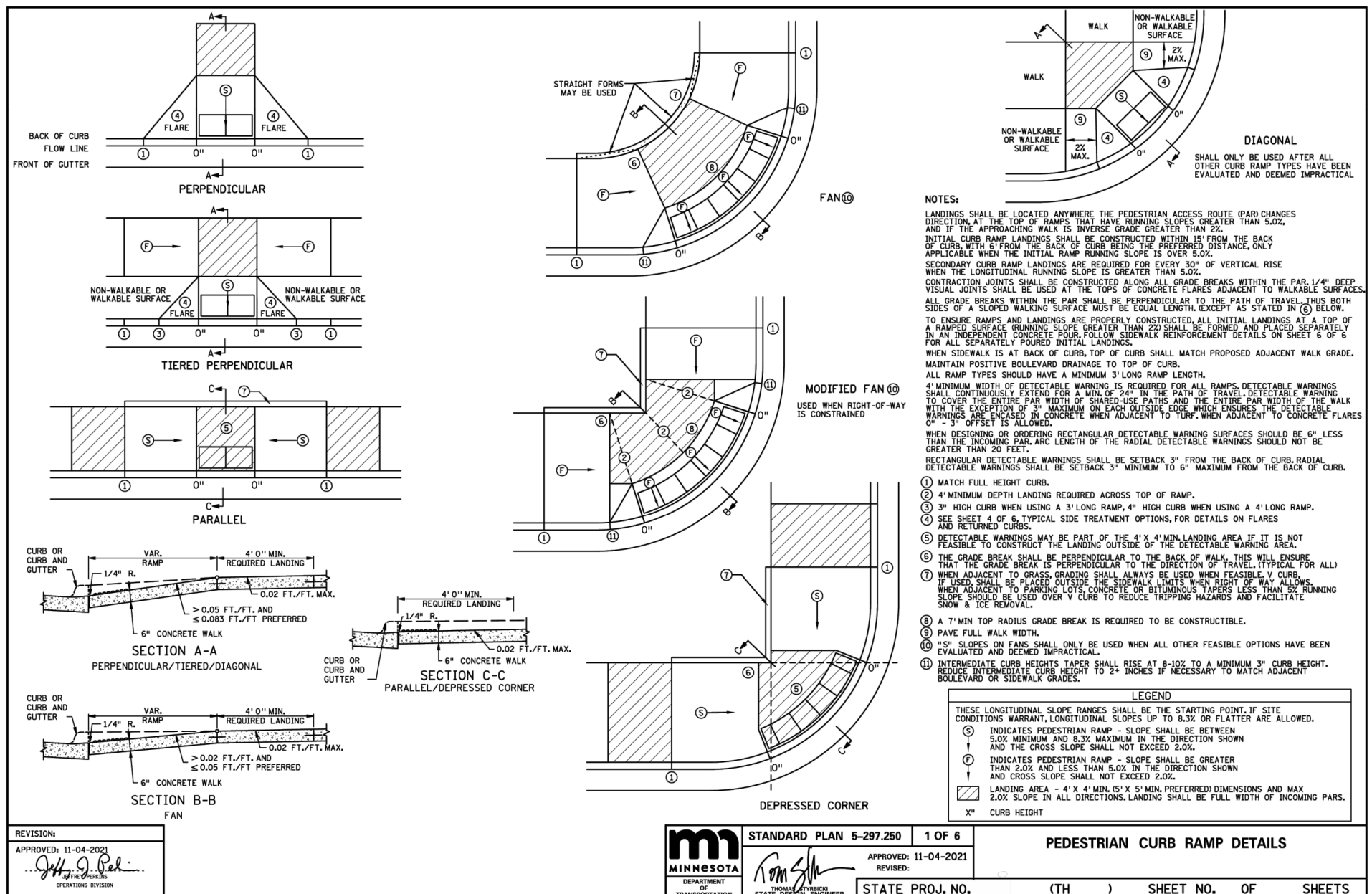


**FLAT CURB AND GUTTER (12\"/>
 LOCKS PLATE NO. 2012
 DRAWN 12/2014**



B6-12 STYLE CONCRETE CURB AND GUTTER
 LOCKS PLATE NO. 2009
 DRAWN 2/2016

C



PEDESTRIAN CURB RAMP DETAILS
 STANDARD PLAN 5-297.250 1 OF 6
 APPROVED 11-04-2021
 STATE PROJ. NO. (TH) SHEET NO. OF SHEETS

A

Plotfile: 1/13/2026 4:45 PM



710 South 2nd Street, 8th Floor
 Minneapolis, MN 55401
 phone: (612) 746-4260
 www.jlgarchitects.com
 copyright © 2025

REVISION SCHEDULE		
NO.	DESCRIPTION	DATE

PRELIMINARY
 NOT FOR CONSTRUCTION

CITY OF BLOOMINGTON
SALT SHED AND BRINE BUILDING
 BLOOMINGTON, MN

DATE
01/13/2026
 PHASE
PLANNING COMMISSION
 PROJECT
22263.01
 SHEET

■■■■
C8-1 DETAILS - C8-3