

6

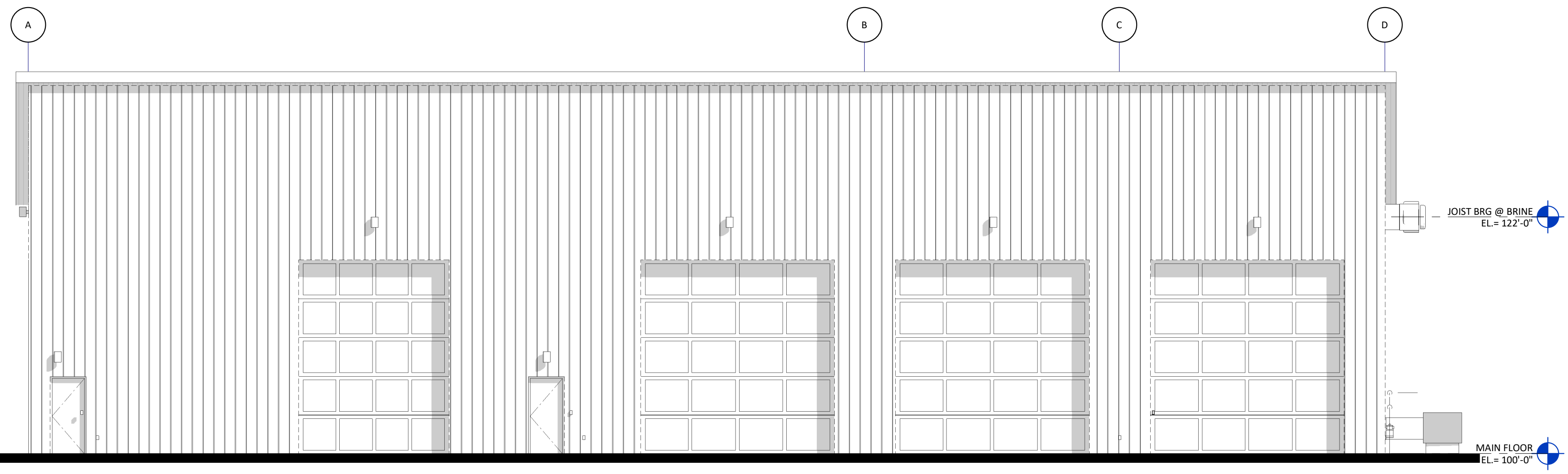
5

4

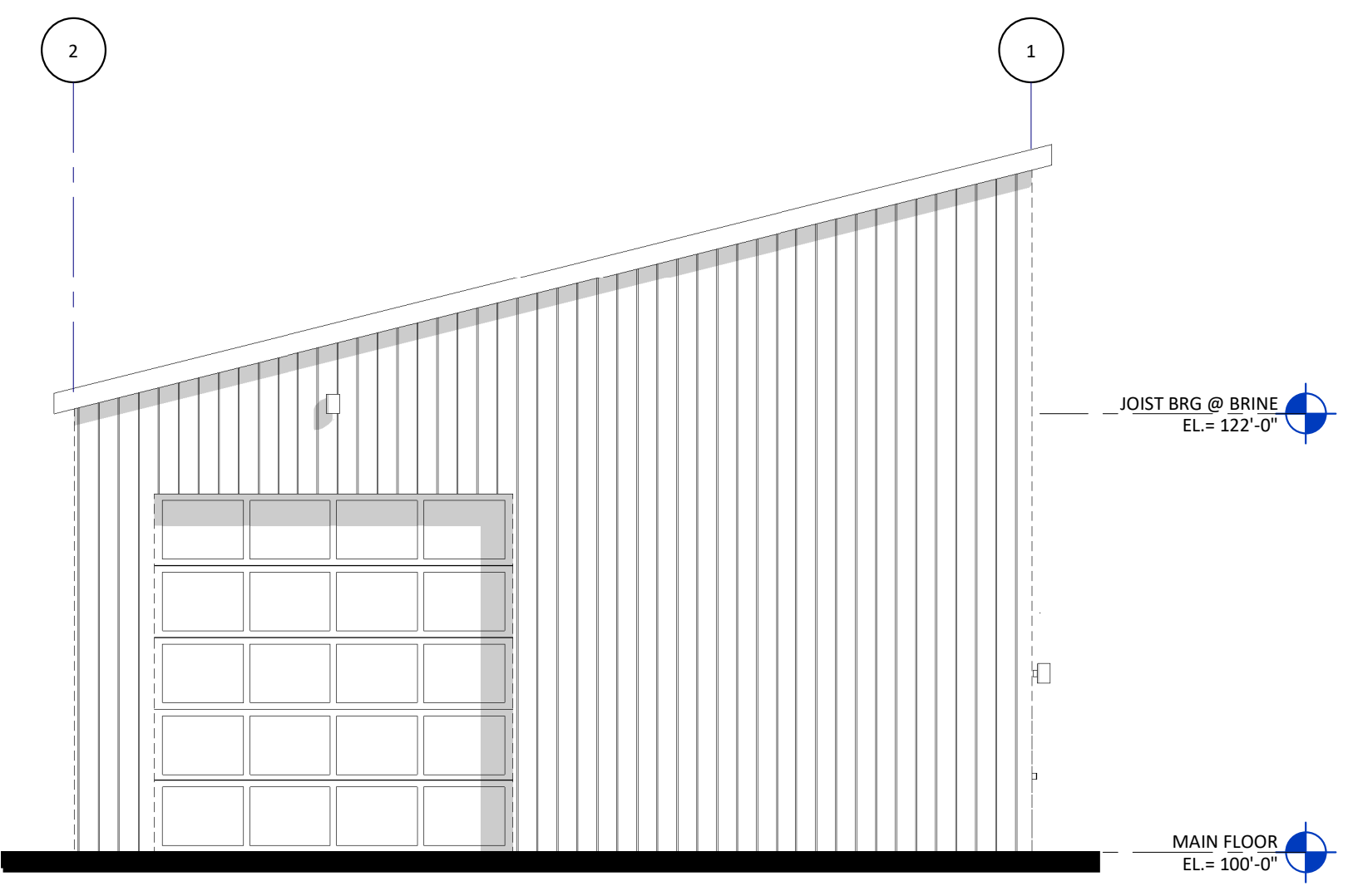
3

2

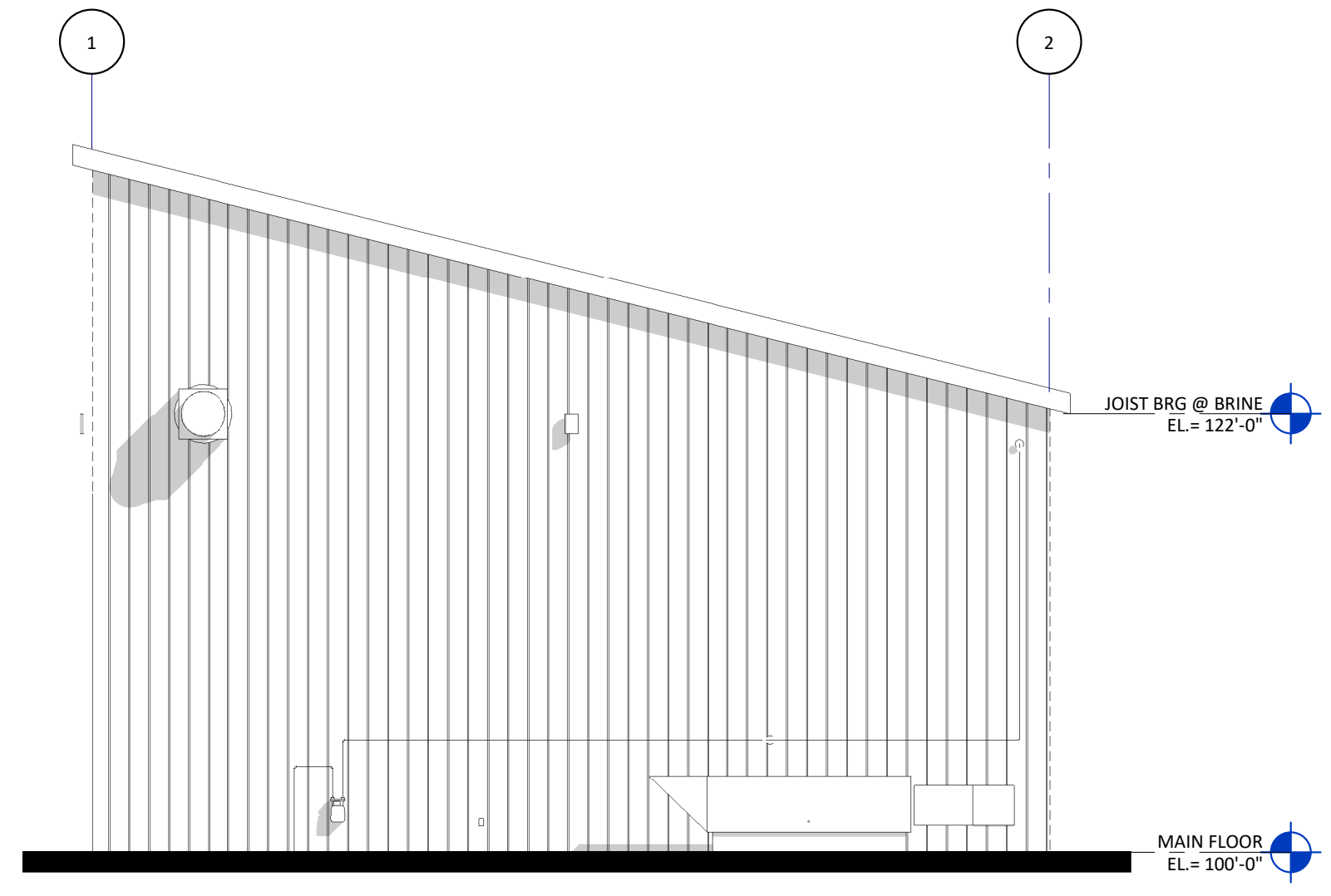
1



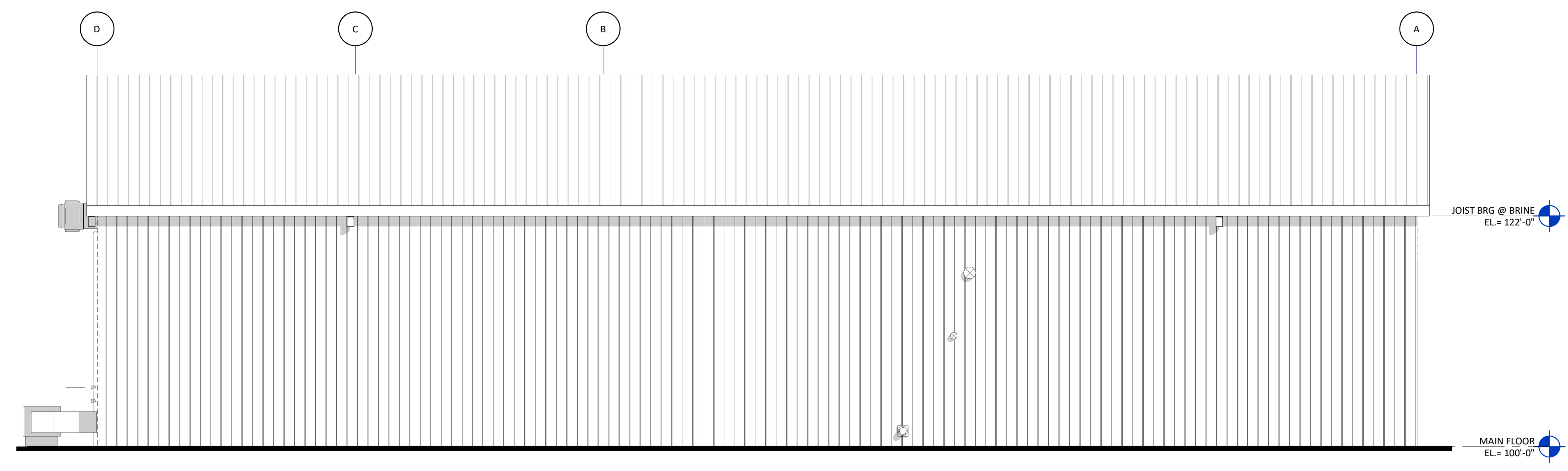
5C EXTERIOR ELEVATION - WEST
A301 SCALE: 1/8" = 1'-0"



5B EXTERIOR ELEVATION - NORTH
A301 SCALE: 1/8" = 1'-0"



3B EXTERIOR ELEVATION - SOUTH
A301 SCALE: 1/8" = 1'-0"



5A EXTERIOR ELEVATION - EAST
A301 SCALE: 1/8" = 1'-0"

SHEET SPEC ID LIST	
SPEC ID	SPEC SECTION & DESCRIPTION

KEYNOTES - EXTERIOR ELEV.		
NO.	NOTE	REV.



710 South 2nd Street
 8th Floor
 Minneapolis, MN 55401
 phone: (612) 746-4260
 www.jlgarchitects.com
 copyright © 2025

REVISION SCHEDULE		
NO.	DESCRIPTION	DATE

PRELIMINARY
 NOT FOR CONSTRUCTION

CITY OF BLOOMINGTON
SALT SHED AND BRINE BUILDING
 BLOOMINGTON, MN

GENERAL NOTES - EXTERIOR ELEVATIONS
 A. REFER TO GLAZING ELEVATIONS FOR STOREFRONT AND CURTAINWALL ELEVATIONS

DATE
12/19/2025

PHASE
DESIGN DOCUMENTS

PROJECT
22263.01

SHEET
A301

EXTERIOR ELEVATIONS

1/13/2026 4:07:21 PM

6

5

4

3

2

1