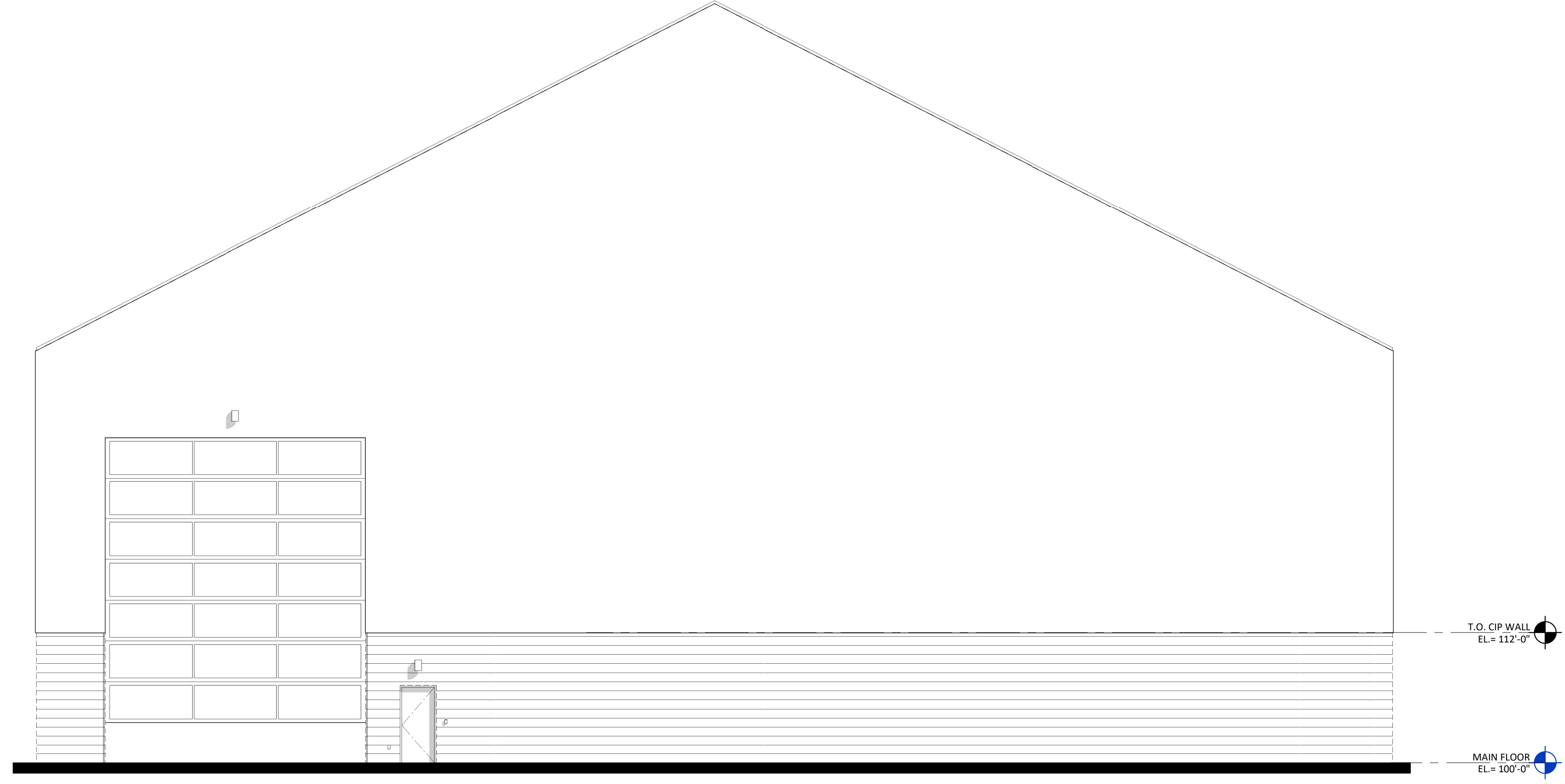
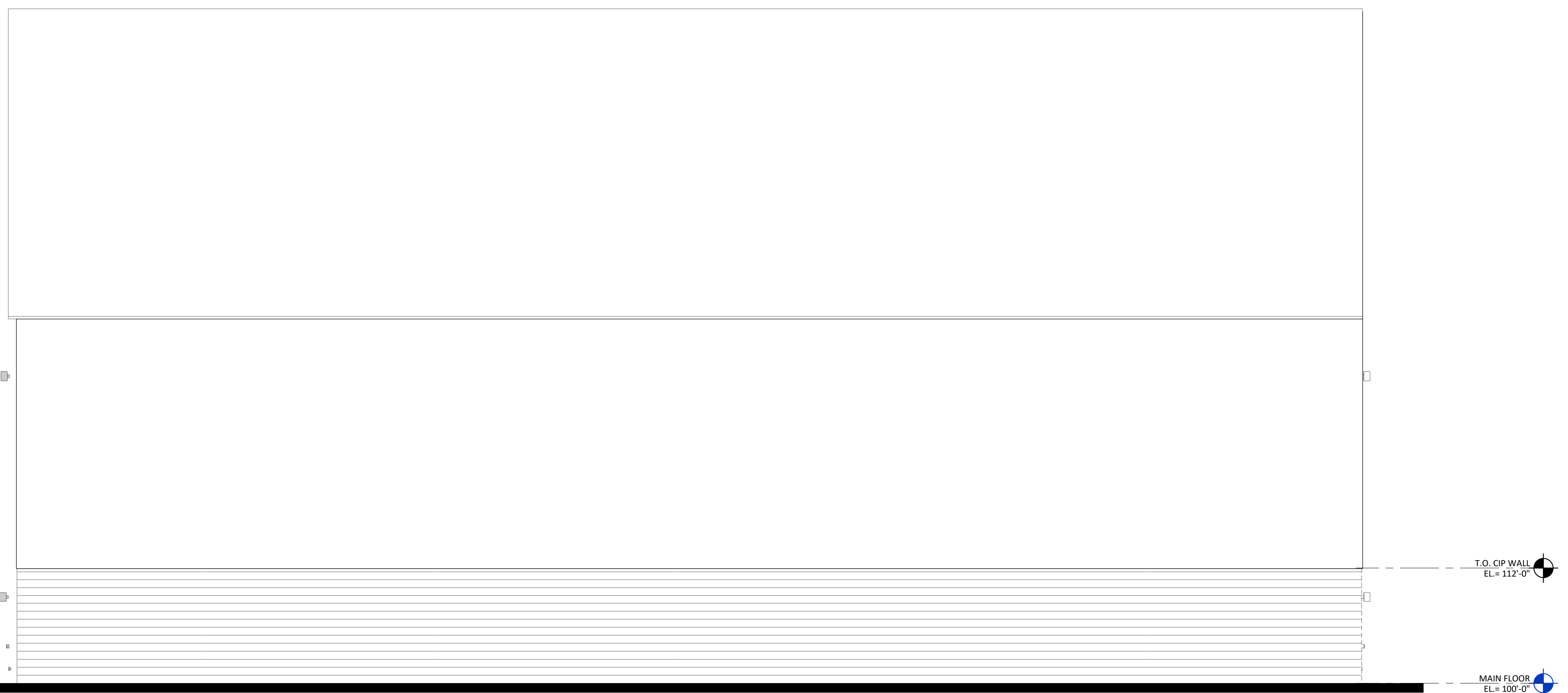


6 5 4 3 2 1

D  
C  
B  
A



**6C** EXTERIOR ELEVATION - SOUTH  
**A303** SCALE: 1/8" = 1'-0"



**6A** EXTERIOR ELEVATION - WEST  
**A303** SCALE: 1/8" = 1'-0"

SHEET SPEC ID LIST	
SPEC ID	SPEC SECTION & DESCRIPTION

KEYNOTES - EXTERIOR ELEV.		
NO.	NOTE	REV.



710 South 2nd Street  
 8th Floor  
 Minneapolis, MN 55401  
 phone: (612) 746-4260  
 www.jlgarchitects.com  
 copyright © 2025

REVISION SCHEDULE		
NO.	DESCRIPTION	DATE

**PRELIMINARY**  
 NOT FOR CONSTRUCTION

CITY OF BLOOMINGTON  
**SALT SHED AND BRINE BUILDING**  
 BLOOMINGTON, MN

**GENERAL NOTES - EXTERIOR ELEVATIONS**  
 A. REFER TO GLAZING ELEVATIONS FOR STOREFRONT AND CURTAINWALL ELEVATIONS

DATE  
**01/13/26**  
 PHASE  
 DESIGN  
 DOCUMENTS

PROJECT  
**22263.01**

SHEET  
**A303**  
 EXTERIOR  
 ELEVATIONS - SALT  
 SHED

6 5 4 3 2 1

1/13/2026 4:07:24 PM