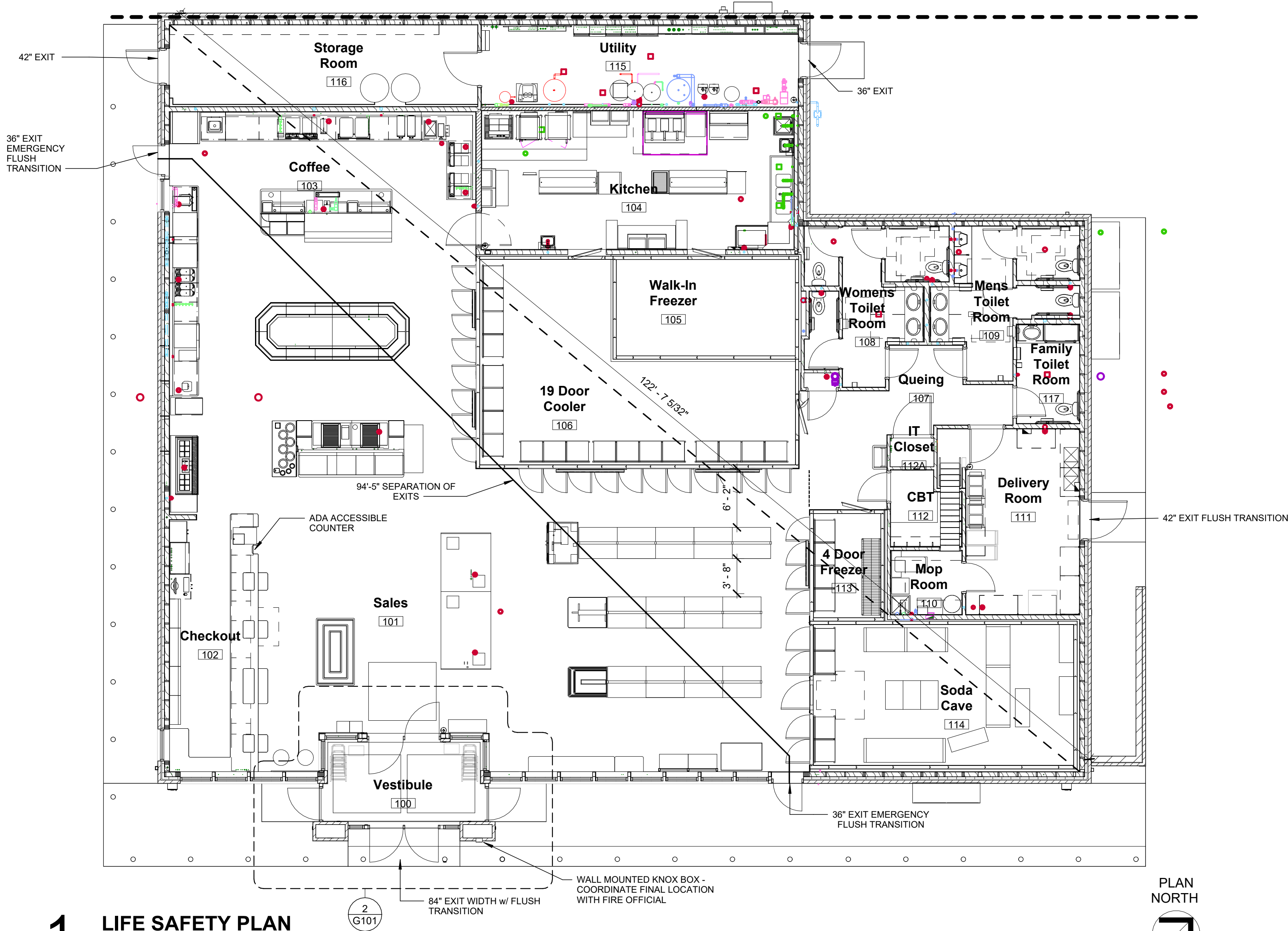


**2 ADA PUSH PAD PLAN**  
1/4" = 1'-0"



**1 LIFE SAFETY PLAN**  
1/8" = 1'-0"



## BUILDING CODE SUMMARY MN

<b>Applicable Codes:</b>	2018 International Building Code with State Amendments/ Chapter 1305 (2020 MN Building Code) 2020 Minnesota State Building Code 2020 Minnesota Accessibility Code (Based on 2018 IBC and ANSI A-117.1 2009) 2020 Minnesota State Fire Code (2018 IFC as amended by the State of Minnesota) 2020 National Electrical Code 2020 Minnesota Plumbing Code (Reference to 2018 Uniform Plumbing Code) Minimum Plumbing Fixtures/ 2018 IBC Chapter 29, as amended 2020 Minnesota Mechanical and Fuel Gas Code w/ ANSI/ASHRAE Standard 62.2-2016 and ANSI/ASHRAE Standard 154-2016 2020 Minnesota Commerical Energy Code w/ ANSI/ASHRAE/IES Standard 90.1-2016 Snow Loads/ MSBC Rules 1303.1700 Frost Depth/ MSBC Rules 1303.1600 Wind Speed/ Minimum 115 MPH Recycling Space/MSBC 1303.1500					
<b>Description of Work:</b>	New Building					
<b>Building Occupancy:</b>	Classification: Store: Mercantile Group M Car Wash: Business Group B					
<b>Building Areas:</b>	7,298 sq. ft. (9,000 sq. ft. allowable)					
<b>Number of Stories:</b>	One (one allowable)					
<b>Type of Construction:</b>	Store: Type 5B: Non-Sprinklered Car Wash: Type 5B: Non - Sprinklered					
<b>Sprinkler Requirements:</b>	Per 903.2.7 An automatic sprinkler system is not required for Group M fire areas less than 12,000 sq. ft.					
<b>Fire Alarm:</b>	Per 907.2.7 Group M- Manual fire alarm boxes are not required in a Group M occupancy having an occupant load less than 500 persons					
<b>Area Modifications:</b>	506.3 Frontage Increase (318/426-.25) 30/30 = 0.50 x 9,000 sq. ft. = 4,500 sq. ft. additional per floor					
<b>Building Separations, Fire Partitions: Rated Areas</b>	Table 508.4 - no seperation is required between occupancy groups B & M.					
<b>Fire Resistive Rating for Exterior Walls</b>	Table 602 Type V-B Construction, greater than 10 feet = 0 Rating					
<b>Attic Separation:</b>	Per 718.4 Draft stopping shall be installed in attics such that any horizontal area does not exceed 3,000 sq. ft. provide access to each separated area.					
<b>Occupant Load:</b>						
<u>Per Table 1004.5</u>	<u>Space</u>					
Mercantile	4,240 sq. ft./30 sq. ft. = 141 persons					
Grade Floor @ 30 sq. ft.	2,621 sq. ft./300 sq. ft. = 8 persons					
Stock Area @ 300 sq. ft.	<b>Total occupant load = 149 persons</b>					
<b>Exit Requirements:</b>						
Table 1005.3.2	"Required Exit Width" Based on occupant load - 149 x 0.2 = 29.8'					
Table 1006.3.2	Two exits required where Occupant Load is between 1 to 500.					
Table 1017.2	Travel distance: 200 ft. Non-sprinklered					
Table 1006.2.1	Common path: Common path of egress travel shall not exceed 75ft.					
Section 1020.4	Dead end corridors shall not exceed 20'. There are no dead end corridors on this project.					
Section 1018.2.2	Isle width shall not be less than 36"					
<b>ADA Accessibility:</b>						
- The project will provide access to all areas of the facility. All spaces in the project will comply with ADA requirements.						
- The Restrooms have toilet compartments with toe clearance on two sides since the interior partitions continue to the floor.						
ANSI A-117.1- 2009 - Section 604.9.5.1 Exception 1 & 2 - Min size for floor mounted toilets 65" deep x 66" wide min.						
<b>Sanitary Fixtures:</b>						
Per Table 2902.1						
Area	U or WC (M)	WC(F)	Lav	Showers	D.F.	Other
Mercantile	.14	.14	.19	---	.14	1 service sink
Business	.9	.9	1.1	---	.4	1 service sink
Required	2	2	2	---	2	1 service sink
Provided	4	4	4	---	See note below	1 service sink
<b>Drinking Fountain Note:</b>	Kwik Trip provides free cups of water from soda machine to all who enter.					
<b>Fire Extinguishers:</b>	906.1 per NFPA 10 - see floor plans for designated locations					
<b>Foam Plastic Insulation:</b>	2603.9 Special Approval - Foam plastic shall not be required to comply with the requirements of Section 2603.4 or those of Section 2603.3 where specifically approved based on large-scale tests such as, but not limited to, NFPA 286 (with the acceptance criteria of Section 803.1.1.1), FM 4880, UL 1040 or UL 1715. Such testing shall be related to the actual end-use configuration and be performed on the finished manufactured foam plastic assembly in the maximum thickness for use. Foam plastics are used as interior finish on the basis of special tests shall conform to the flame spread and smoke-developed requirements of Chapter 8. Assemblies tested shall include seams, joints and other typical details used in the installation of the assembly and shall be tested in the manner intended for the use.					
<b>Exhaust Hood:</b>	Kitchen will contain two hoods, both Type I and Type II.					