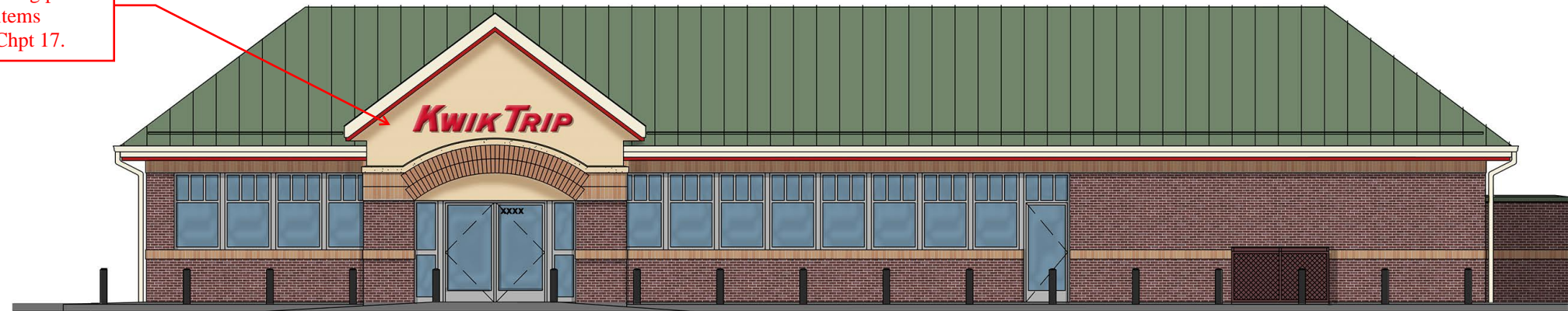


Submit special inspections form with building permit for EIFS and items pertaining to Chpt 17.



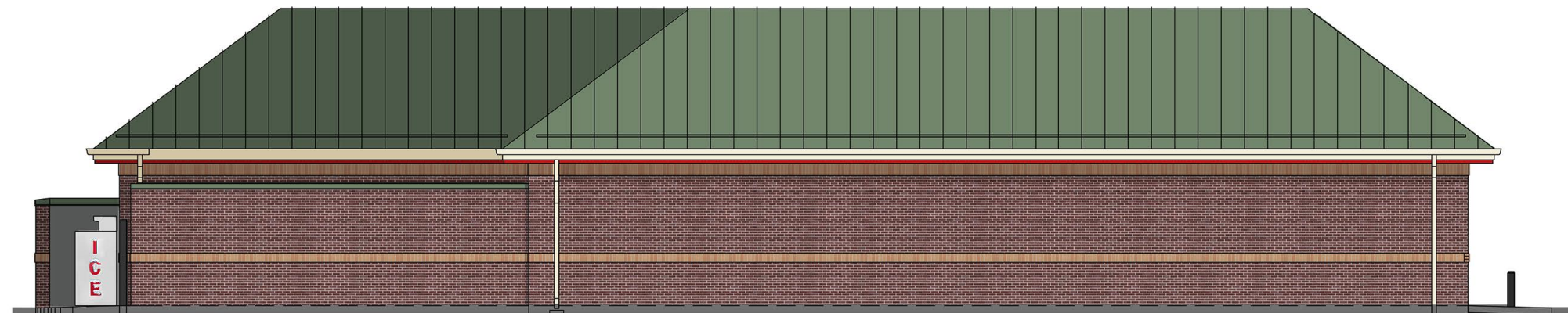
Reference 21.301.04 Exterior Materials and Finish for standards

1 FRONT ELEVATION



Add additional transparency along the west elevation. The building elevations are code complying, but we believe additional transparency will improve the overall aesthetic along the public street.

2 LEFT ELEVATION



3 REAR ELEVATION



4 RIGHT ELEVATION

